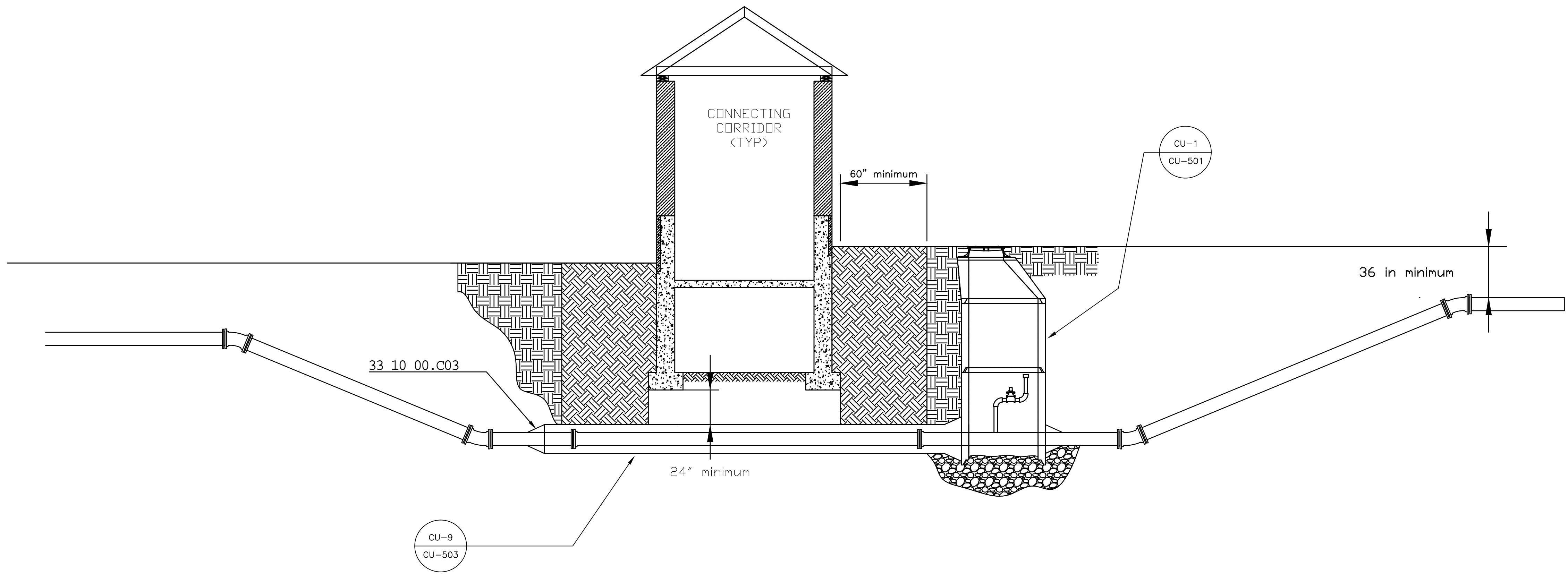


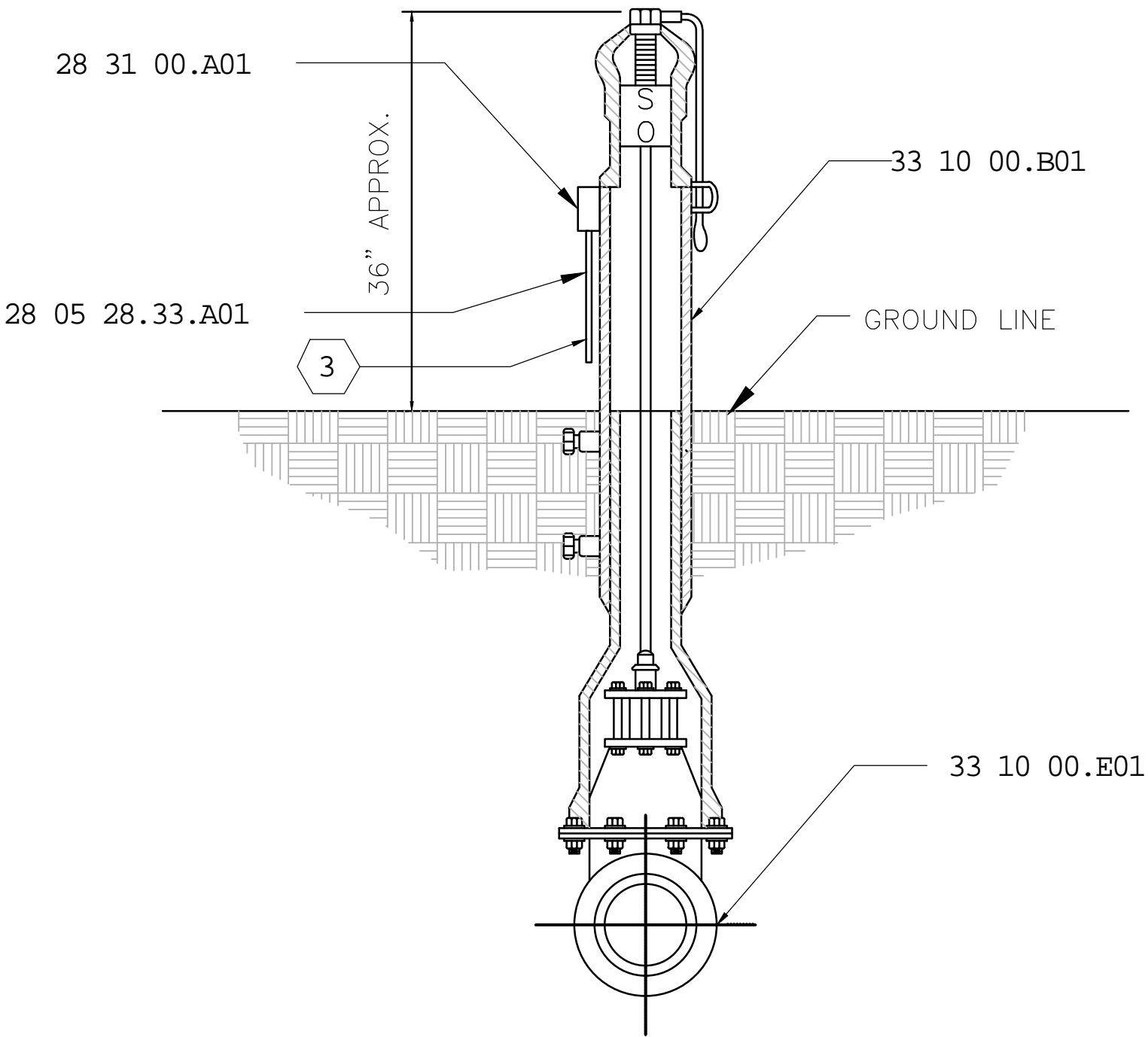
three inches = one foot
one and one-half inches = one foot
one inch = one foot
three-quarters inch = one foot
one-half inch = one foot
three-eighths inch = one foot
one-quarter inch = one foot
one-eighth inch = one foot



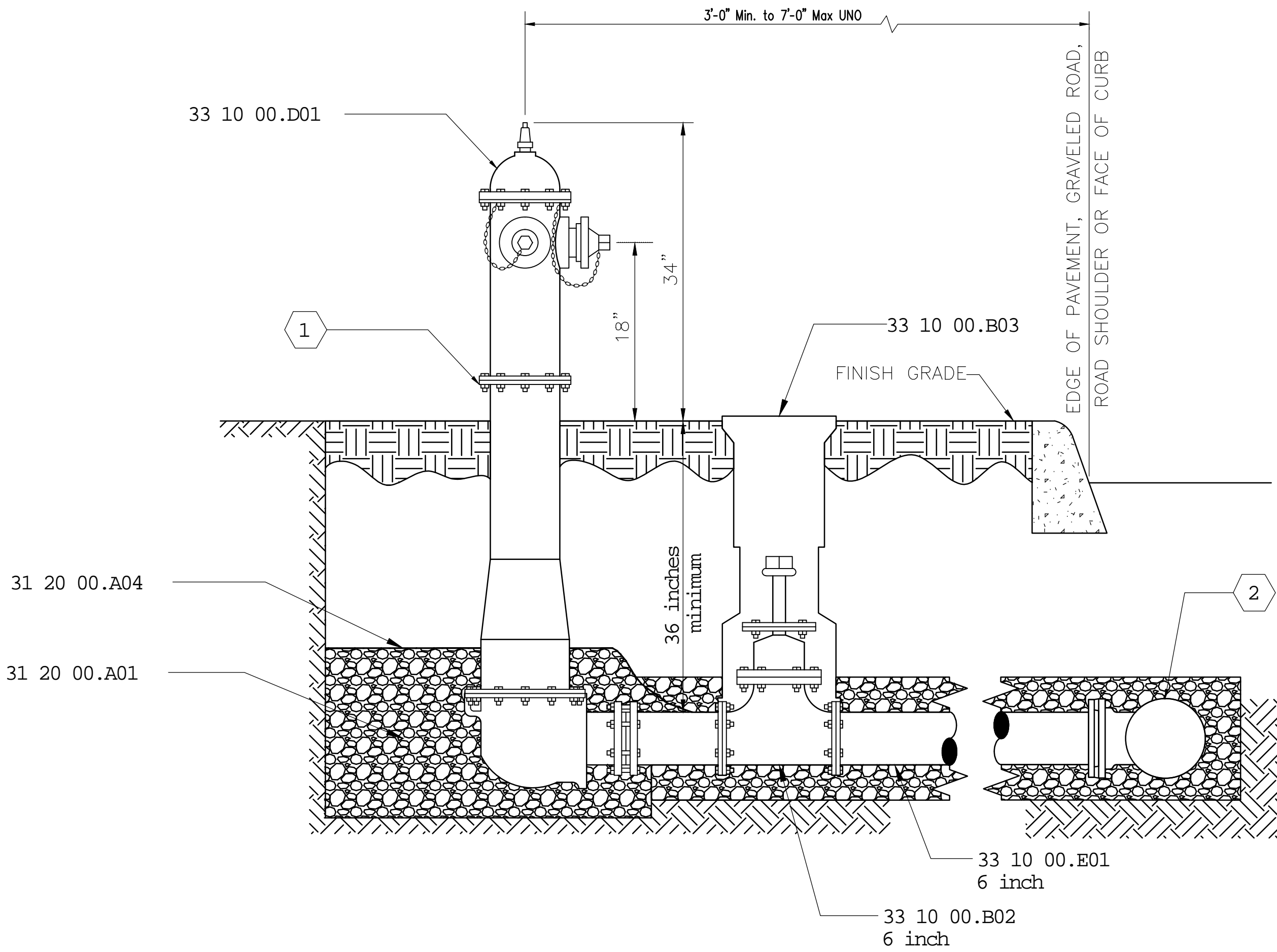
- REFERENCE KEYNOTES
- | | |
|--------------------|-------------------------------------|
| 1. 28 05 28.33.A01 | CONDUIT, RIGID METALLIC |
| 2. 28 31 00.A01 | SUPERVISORY SWITCH, PIV TAMPER |
| 3. 31 20 00.A01 | DRAINAGE FILL |
| 4. 31 20 00.A02 | PIPE BEDDING |
| 5. 31 20 00.A04 | GEOTEXTILE |
| 6. 33 10 00.B01 | POST INDICATOR |
| 7. 33 10 00.B02 | GATE VALVE |
| 8. 33 10 00.B03 | VALVE BOX |
| 9. 33 10 00.C01 | BORE CASING PIPE |
| 10. 33 10 00.C02 | CASING SPACER (SPIDER) |
| 11. 33 10 00.C03 | CASING END SEAL |
| 12. 33 10 00.D01 | FIRE HYDRANT |
| 13. 33 10 00.E01 | DUCTILE IRON PIPE, MECHANICAL JOINT |

- SHEET KEYNOTES
1. Safety breakable flange stem and sleeve.
 2. Pipe size and type according to plan.
 3. Connect new conduit to existing at 5' building line. Provide new alarm conductors from existing fire alarm panel to new switch.

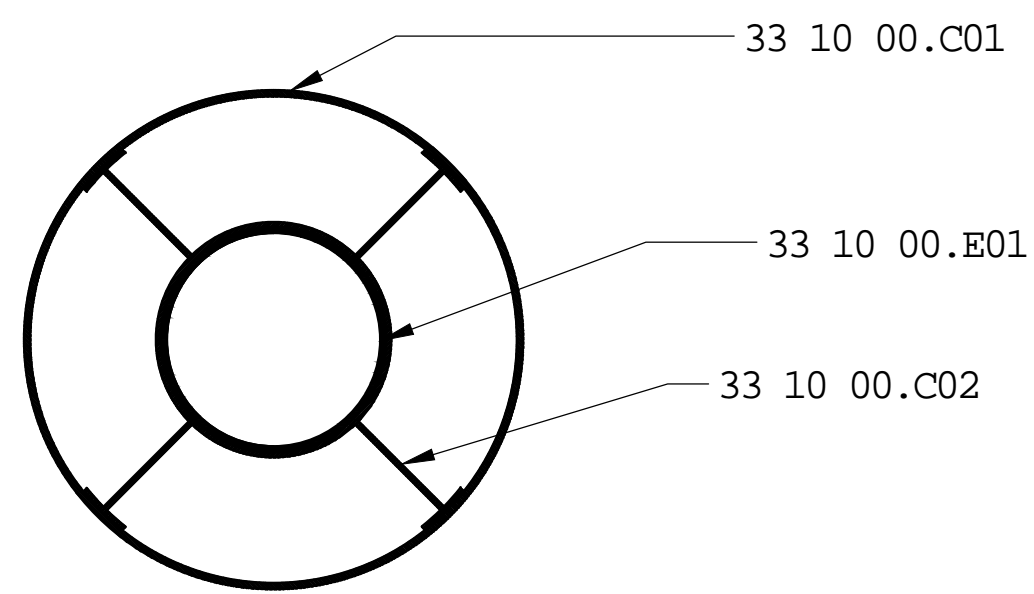
CU-10
CU-503
BORE SECTION UNDER CONNECTING CORRIDORS
NTS



CU-7
CU-503
POST INDICATOR VALVE
NTS



CU-8
CU-503
FIRE HYDRANT AND VALVE
NTS



CU-9
CU-503
SECTION THROUGH CASING AND CARRIER PIPES
NTS

Revisions	Date		Approved: Energy Engineer	Approved: Safety Manager	Approved: Service Chief	Drawing Title CU-502 DETAILS AND ELEVATIONS	Project Title UPGRADE WATER DISTRIBUTION			Date 05-25-12	Veterans Affairs
				Approved: Infection Control Officer	Approved: Chief of Staff					Project No. 658-12-104	
				Approved: GEMS Coordinator	Approved: Associate Director	Approved: Chief of Facility Management Svc.	Building Number	Checked EBC	Drawn WBJ	DRAWING NO. 2559	
						Approved: Medical Center Director	Location V.A.M.C. SALEM 24153			Dwg. 19 Of 25	