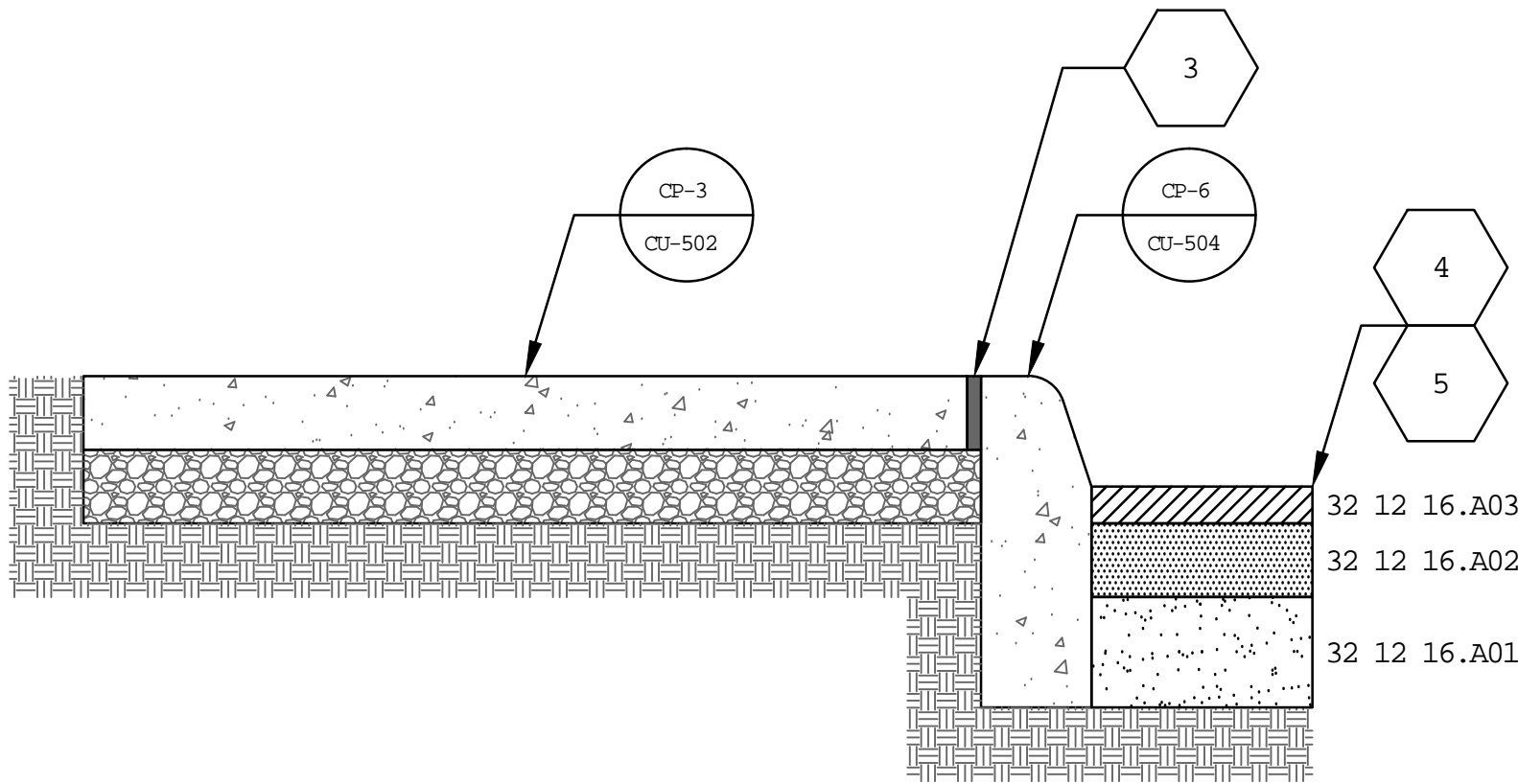
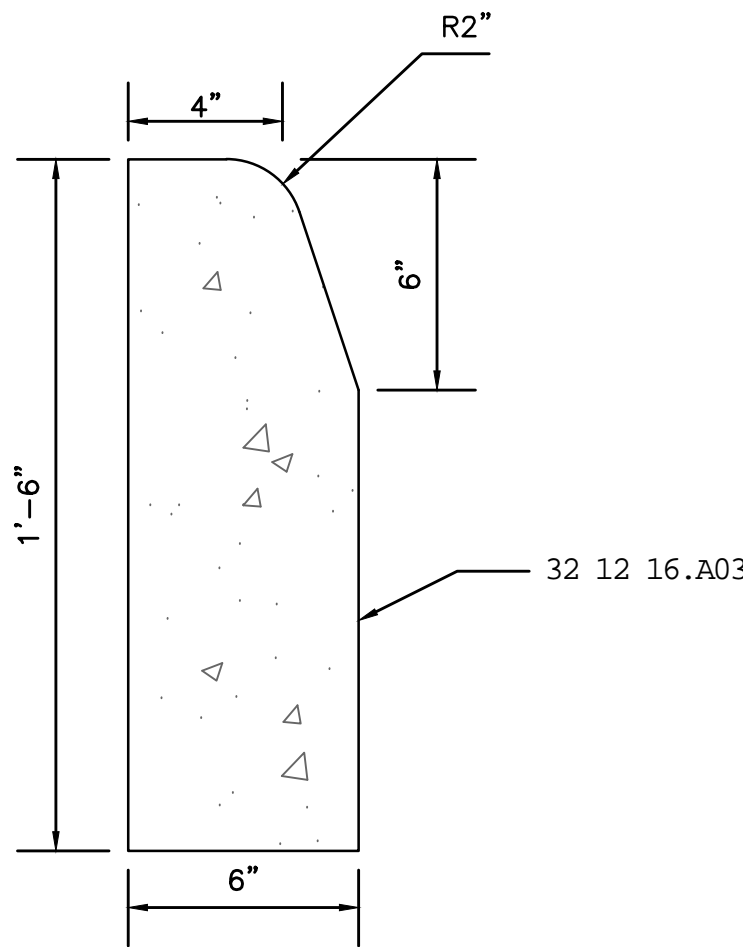


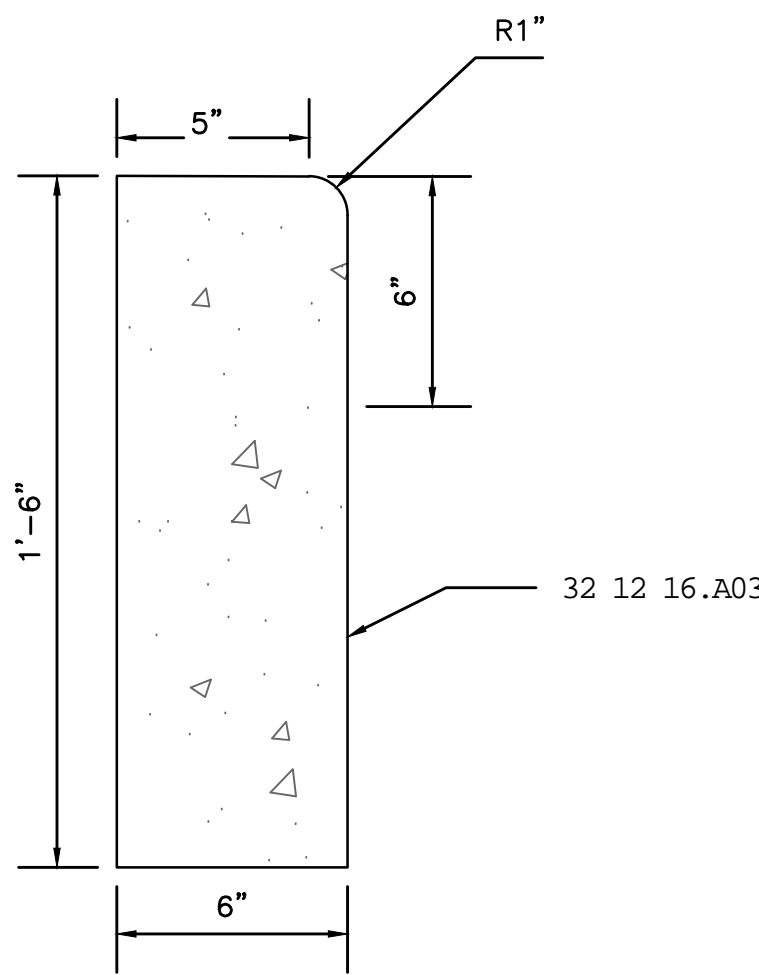
three inches = one foot
one and one-half inches = one foot
one inch = one foot
three-quarters inch = one foot
one-half inch = one foot
three-eighths inch = one foot
one-quarter inch = one foot
one-eighth inch = one foot



CP-5
CU-504
NTS
Sidewalk Section @ Lot F



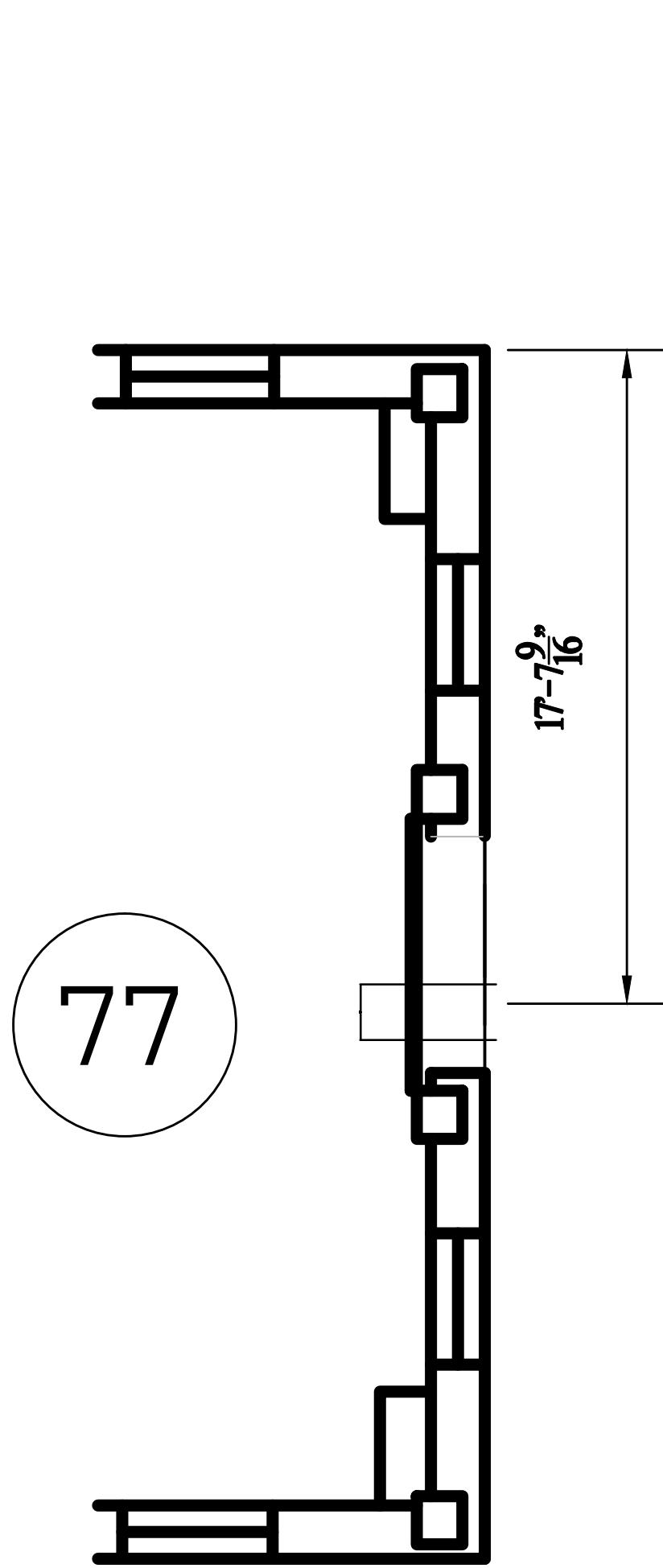
CP-6
CU-504
NTS
CG-2 Curb Section



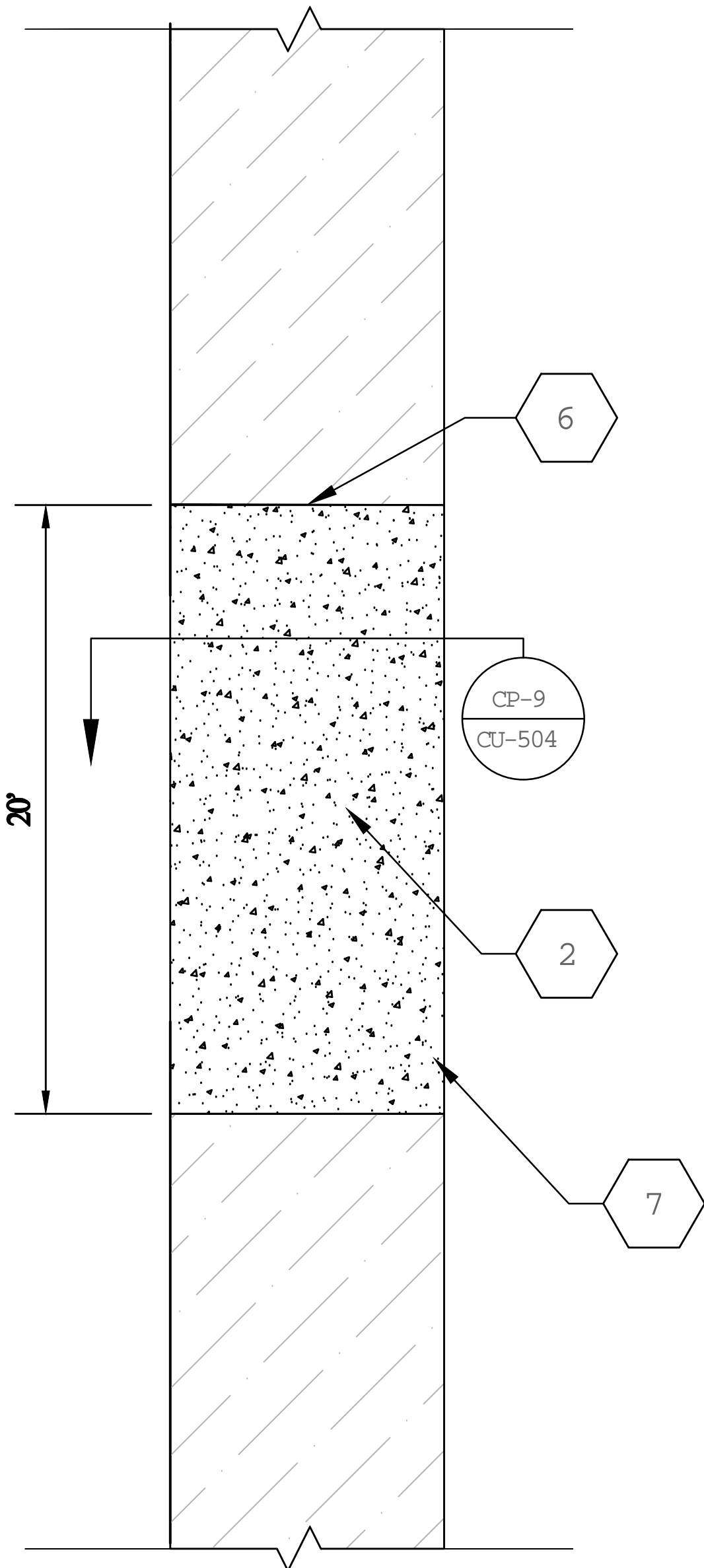
CP-7
CU-504
NTS
Existing Curb Repair Section

- REFERENCE KEYNOTES
- 31 20 00.A03 Select Backfill
 - 32 05 23.A01 Concrete
 - 32 05 23.A02 Expansion Joint Filler
 - 32 05 23.A03 Welded Wire Fabric
 - 32 05 23.A04 Subbase Material
 - 32 12 16.A01 Base Aggregate, VDOT 21B
 - 32 12 16.A02 Asphalt Base Course, EM-37.5
 - 32 12 16.A03 Asphalt Surface Course, SM-9.5A

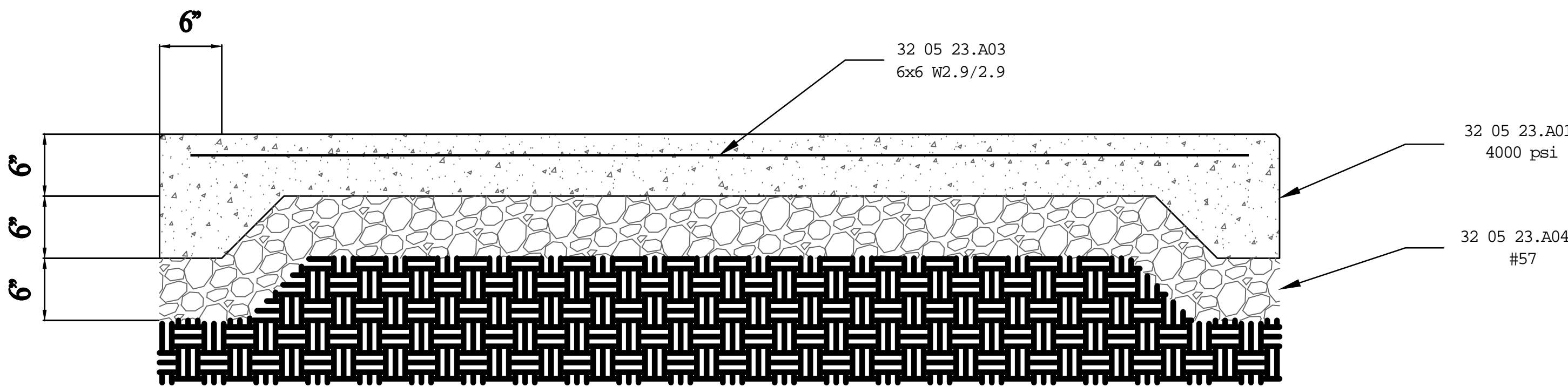
- SHEET KEYNOTES
- Score 1/4" deep joints spaced 6' or sidewalk width, whichever is less, except at contraction and expansion joints.
 - Locate 1 inch sawed or scored contraction joints at 15 foot intervals or to match spacing of abutting curb. Formed contraction joints shall have 1/4" radii.
 - Locate expansion joints where sidewalk abuts concrete driveways, curb, or other adjacent structures and along length of sidewalk at maximum 60 foot intervals. Formed expansion joints shall have 1/4" radii.
 - Sawcut existing pavement full depth, all sides.
 - Tack coat existing pavement edge prior to patching.
 - Turn down all edges of 6" concrete pavement, see detail CP-9/CU-504.
 - Finish grade to match existing pavement grade and slope.



CP-8
CU-504
NTS
Concrete Pavement @ Bldg 77



CP-9
CU-504
NTS
Concrete Pavement Section



					Approved: Safety Manager		Drawing Title CU-504 Civil Details	Project Title UPGRADE WATER DISTRIBUTION			Date 5-25-2012	Veterans Affairs
					Approved: GEMS Coordinator						Project No. 658-12-104	
					Approved: Infection Control Officer	Approved: Chief of Staff	Approved: Chief of Facility Management Svc.	Building Number	Checked	Drawn EBC	DRAWING NO. 2559	
					Approved: Energy Engineer	Approved: Associate Director	Approved: Medical Center Director	Location VAMC SALEM, VA.				
Revisions	Date											