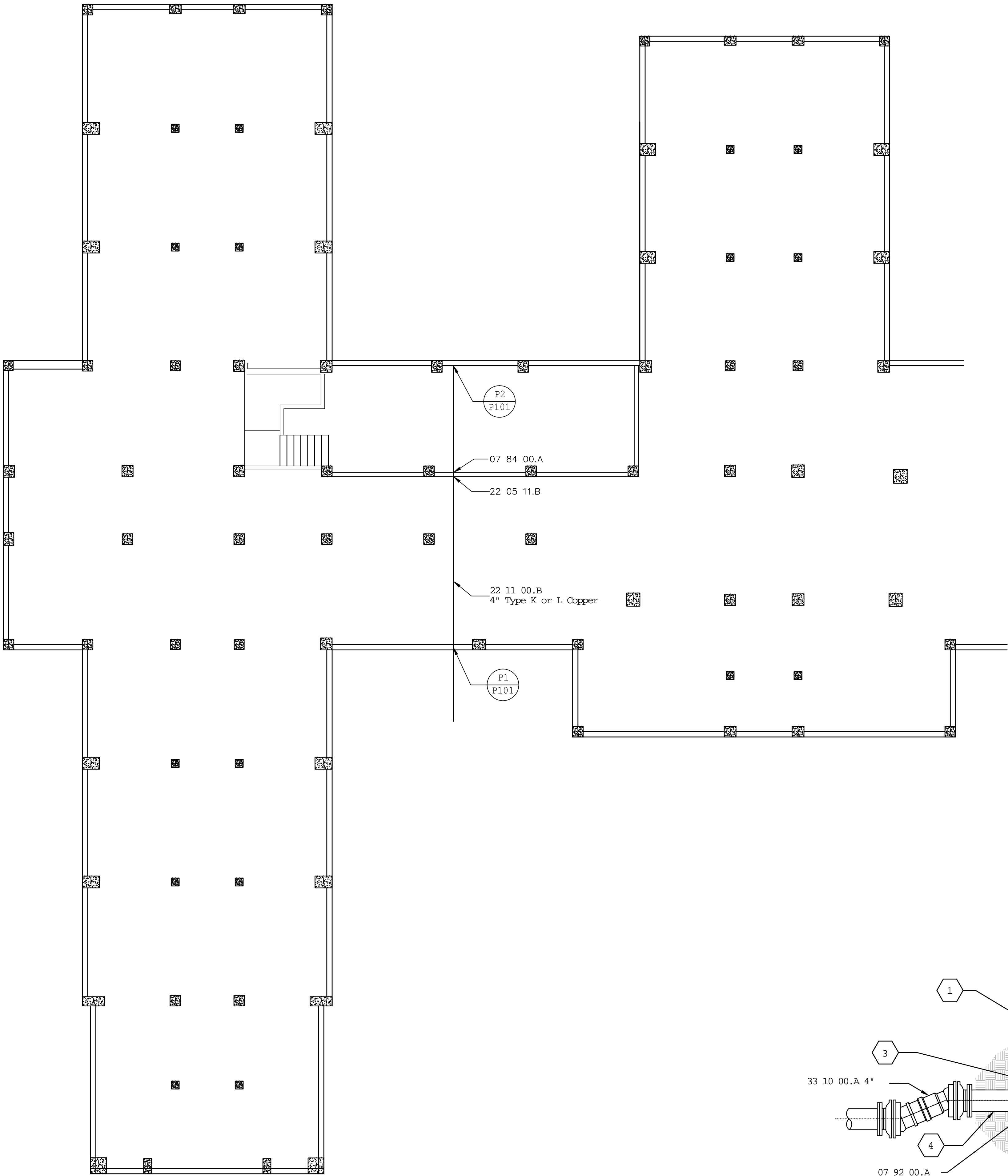
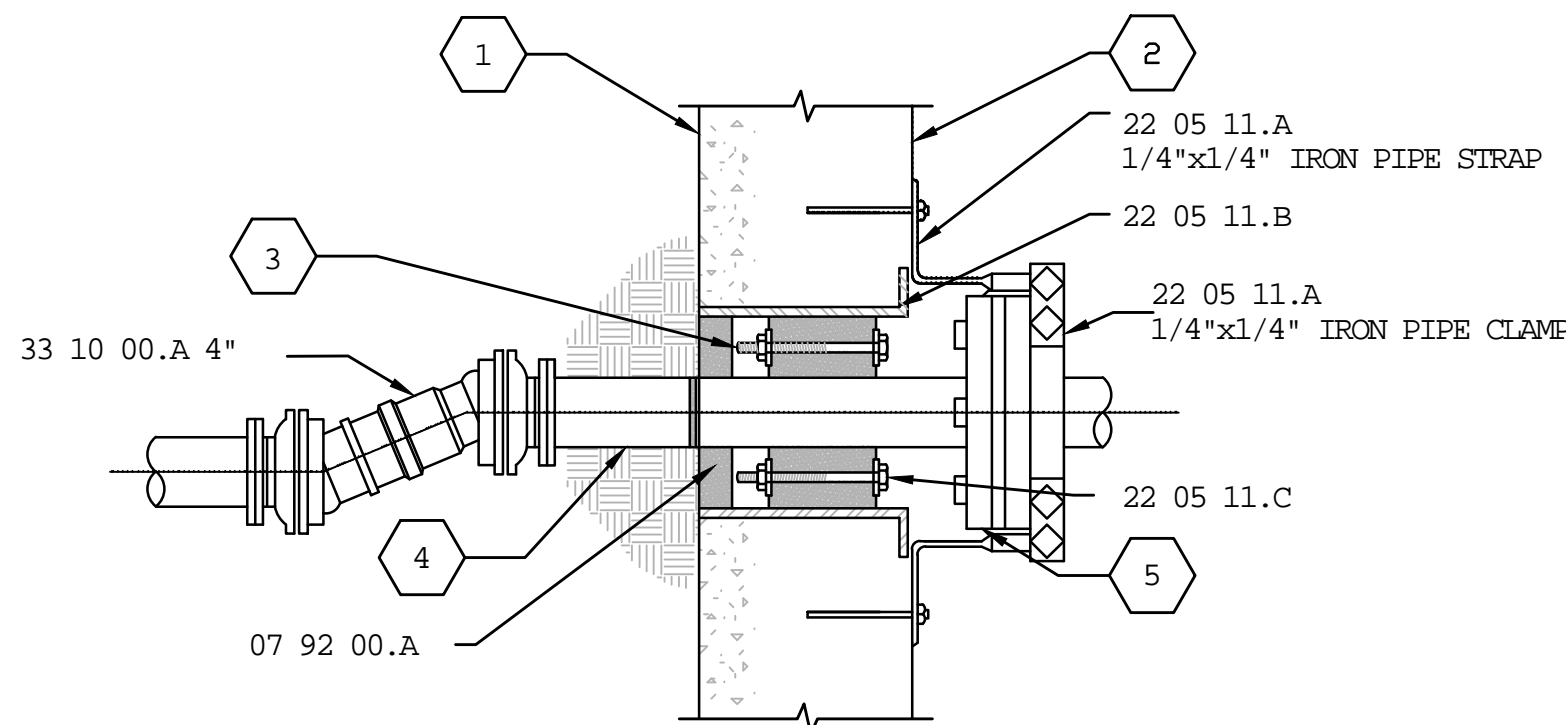


three inches = one foot  
one and one-half inches = one foot  
one inch = one foot  
three-quarters inch = one foot  
one-half inch = one foot  
three-eighths inch = one foot  
one-quarter inch = one foot  
one-eighth inch = one foot



BUILDING 12 SUB BASEMENT  
PLUMBING PARTIAL FLOOR PLAN  
NTS



P1  
P101  
PIPE PENETRATION THROUGH WALLS BELOW GRADE  
NTS

GENERAL SHEET NOTES

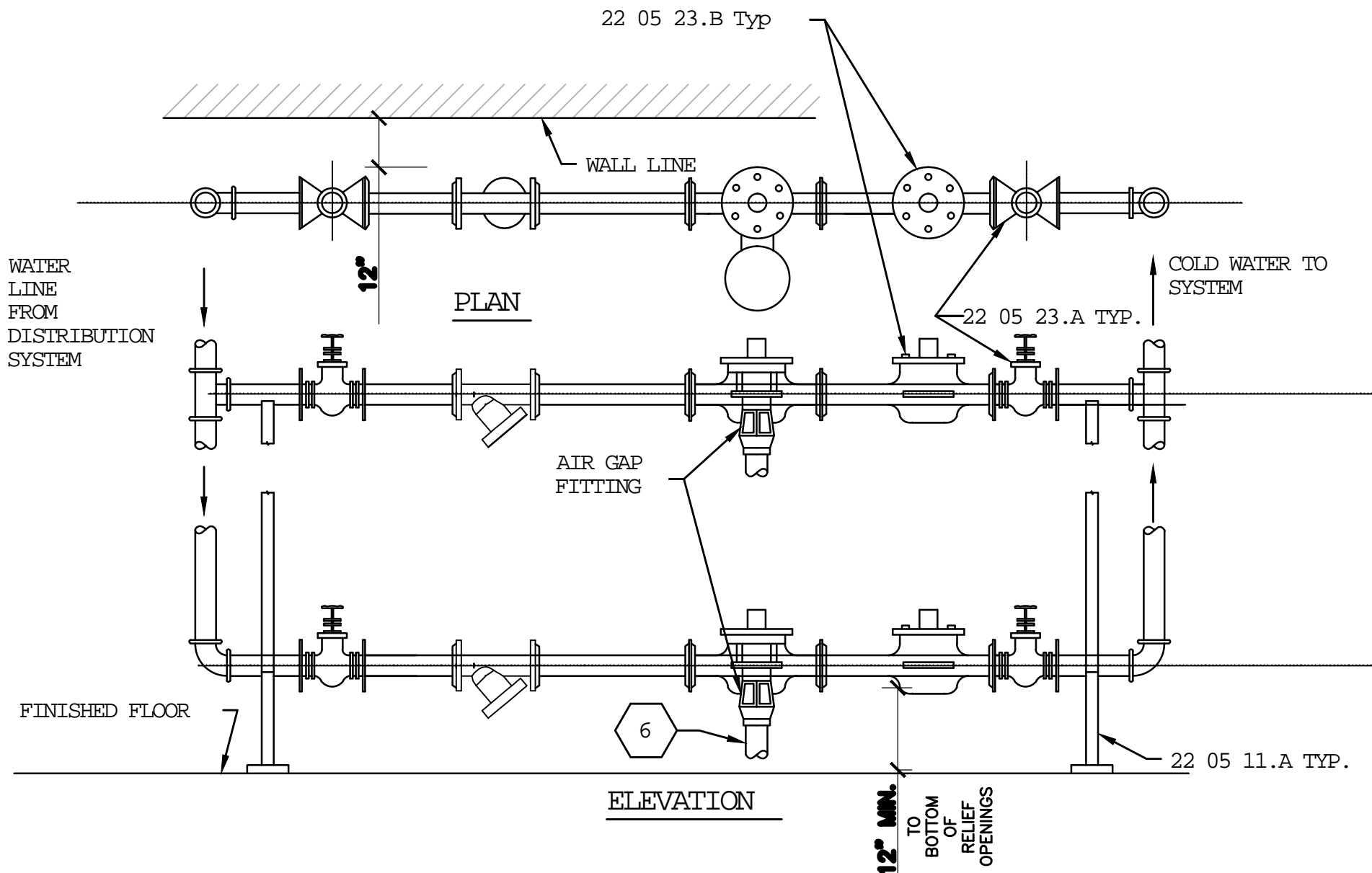
1. Phase backflow preventer installation to minimize disruption to building water service.
2. Prevent damage to plastic sheeting in pipe crawlspace. plastic sheeting is present to encapsulate residual asbestos fibers potentially present in soil.

REFERENCE KEYNOTES

1. 07 84 00.A FIRE STOPPING
2. 07 92 00.A RESILIENT WATERPROOF CAULKING
3. 22 05 11.A PIPE SUPPORT
4. 22 05 11.B PIPE SLEEVE
5. 22 05 11.C MODULAR TYPE WALL PENETRATION SEAL
6. 22 05 23.A GATE VALVE
7. 22 05 23.B REDUCED PRESSURE PRINCIPAL BACK FLOW PREVENTER
8. 22 11 00.A UNDERGROUND PIPE
9. 22 11 00.B ABOVE GROUND (INTERIOR) PIPE
10. 22 11 00.C STRAINER, WYE TYPE
11. 22 11 00.D DIELECTRIC FITTING
12. 33 10 00.A FLEXIBLE EXPANSION JOINT

SHEET KEYNOTES

1. Exterior side of concrete wall.
2. Interior side of concrete wall.
3. Stainless steel nuts, bolts, & washers.
4. Center pipe in sleeve.
5. Flanged pipe connection.
6. Pipe to drain (typical).



P2  
P101  
BACKFLOW PREVENTER PIPING DETAIL  
NTS

VA MEDICAL CENTER, SALEM, VA.  
NO SCALE

Revisions	Date		Approved: Energy Engineer	Approved: Safety Manager	Approved: Service Chief	Drawing Title P-101 PLUMBING SHEET	Project Title UPGRADE WATER DISTRIBUTION	Date 05-25-12			Veterans Affairs
								Project No. 658-12-104			
								Building Number 12	Checked EBC	Drawn WBJ	
								DRAWING NO. 2559			
				Approved: Infection Control Officer	Approved: Chief of Staff	Approved: Chief of Facility Management Svc.	Location V.A.M.C. SALEM 24153	Dwg. 25 Of 25			
				Approved: GEMS Coordinator	Approved: Associate Director	Approved: Medical Center Director					