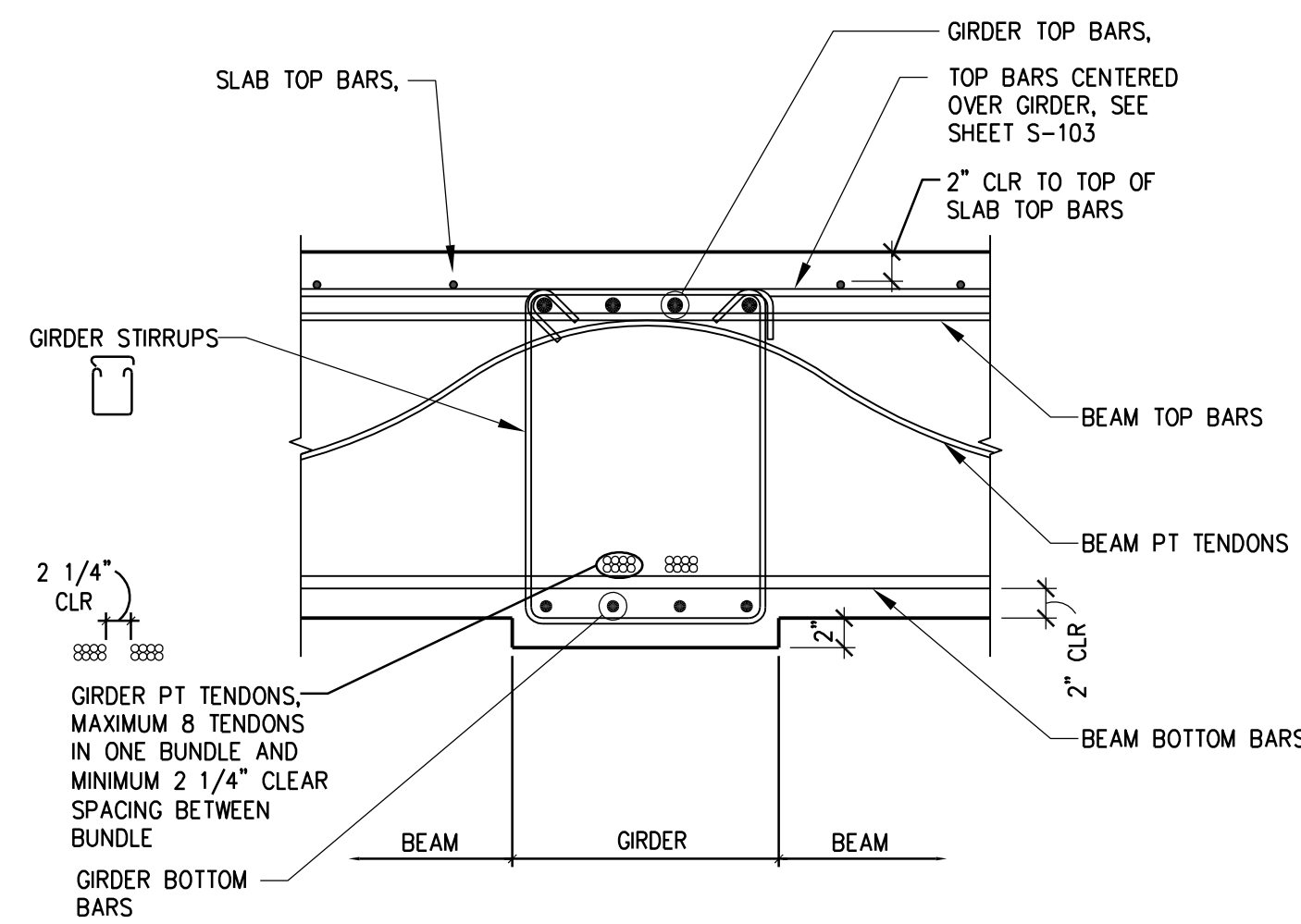


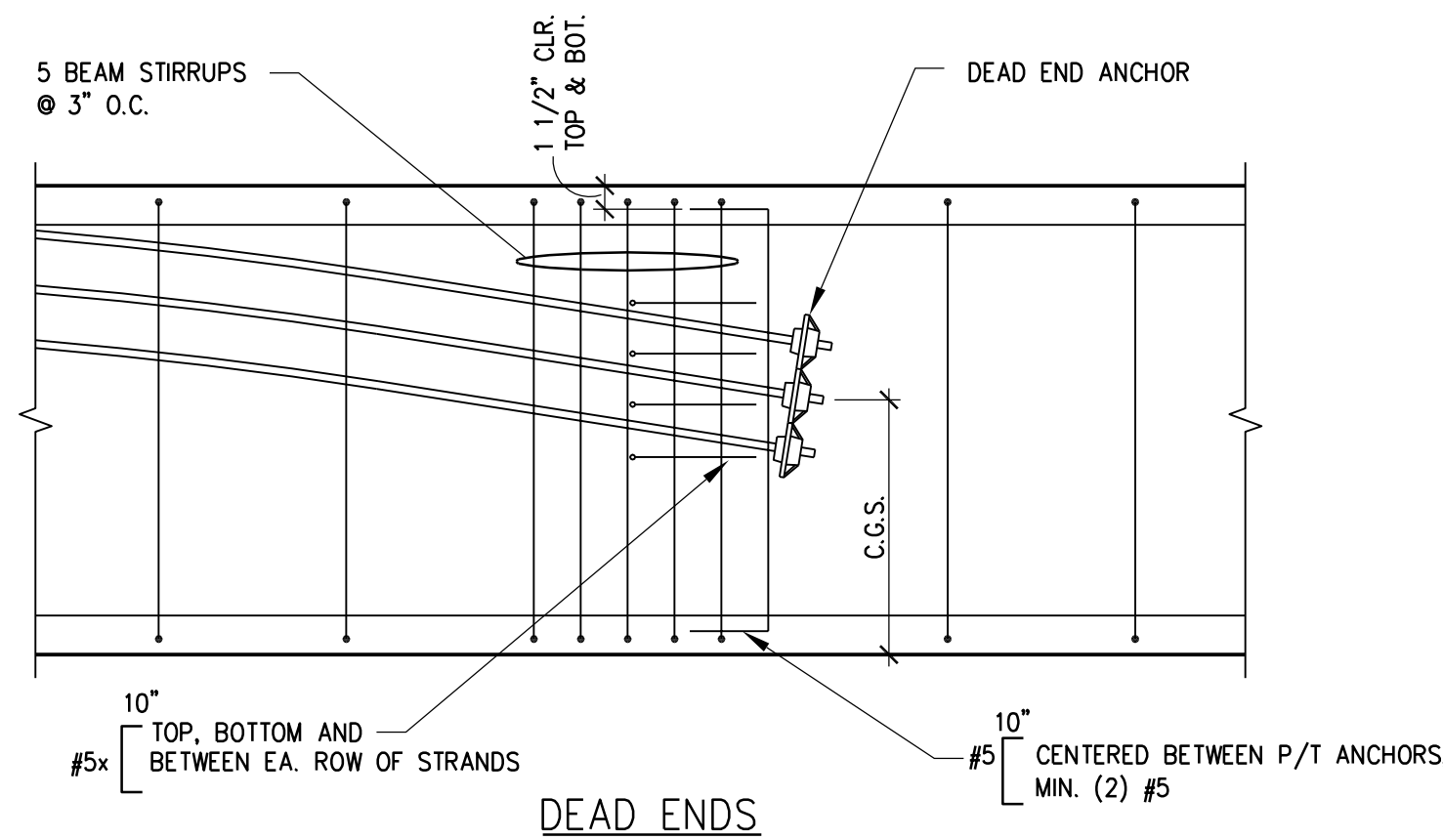
NOTE:
1. I.F. AND O.F. INDICATES INSIDE FACE AND OUTSIDE FACE.

B5 TYPICAL VERTICAL AND SLAB BUMPER WALL REINFORCING



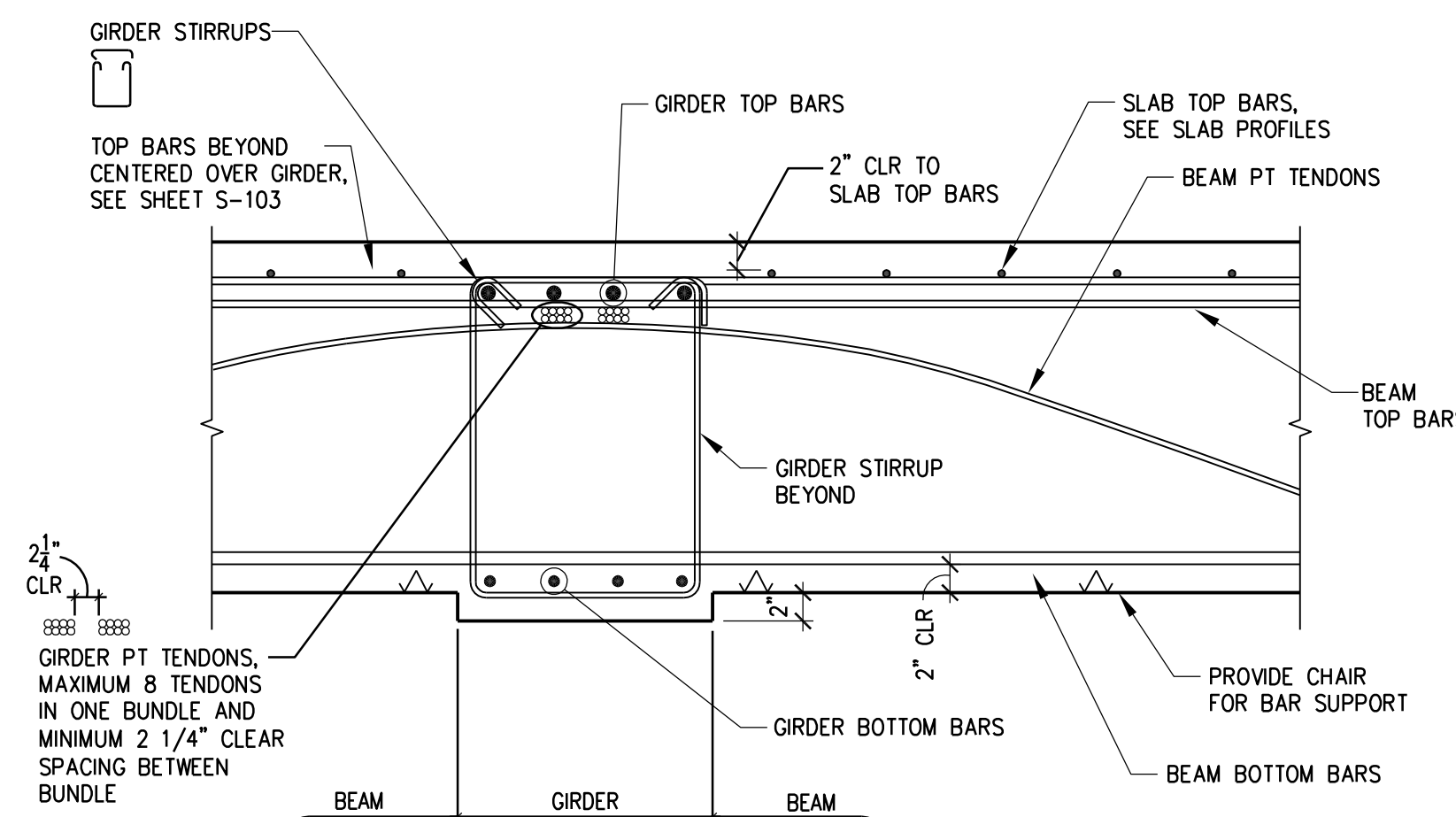
NOTE:
1. BEAM STIRRUPS NOT SHOWN FOR CLARITY.

B7 GIRDER/BEAM REINFORCEMENT DETAIL (AT MID-SPAN OF GIRDER)



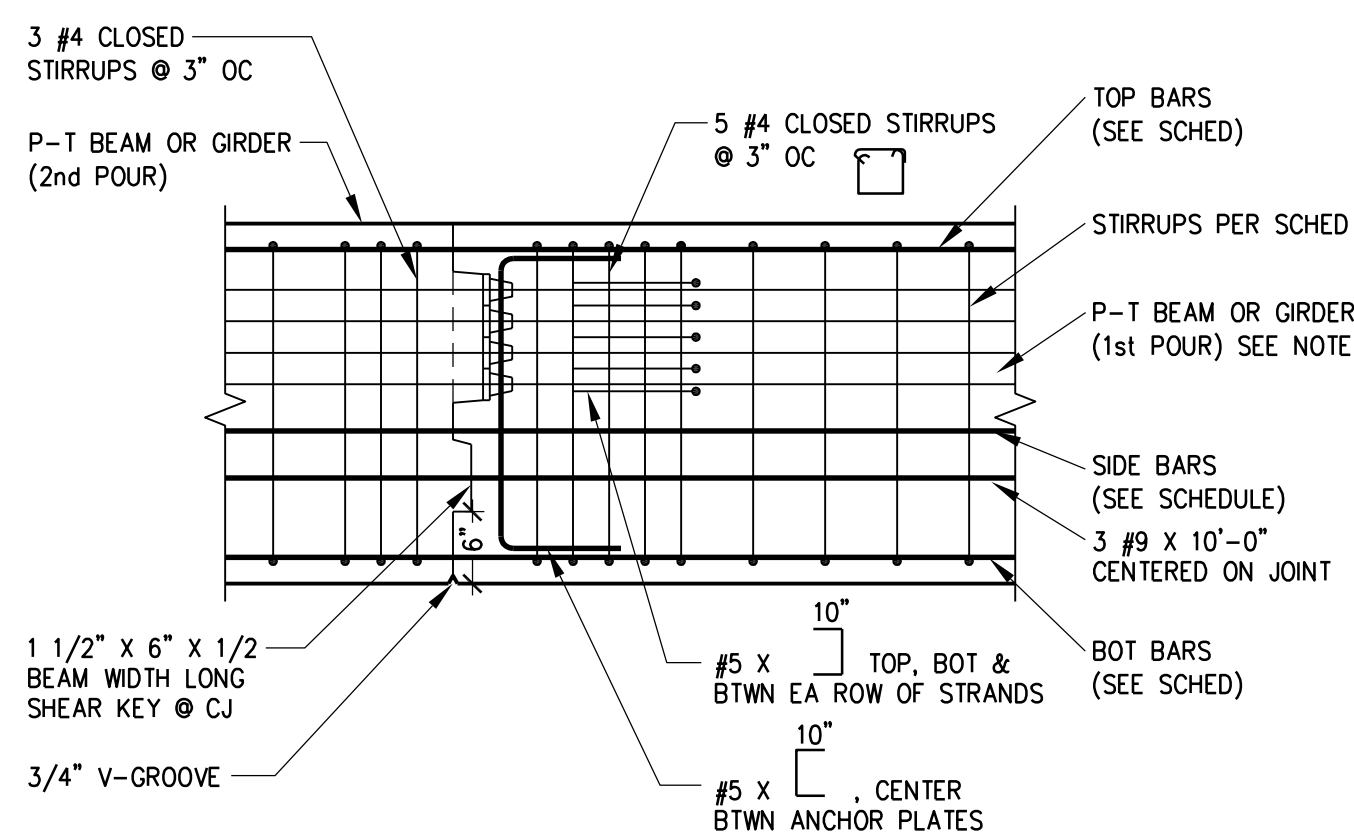
NOTE:
1. C.G.S. INDICATES CENTRAL GRAVITY OF STRANDS.

D5 ADD TENDON ANCHORAGE



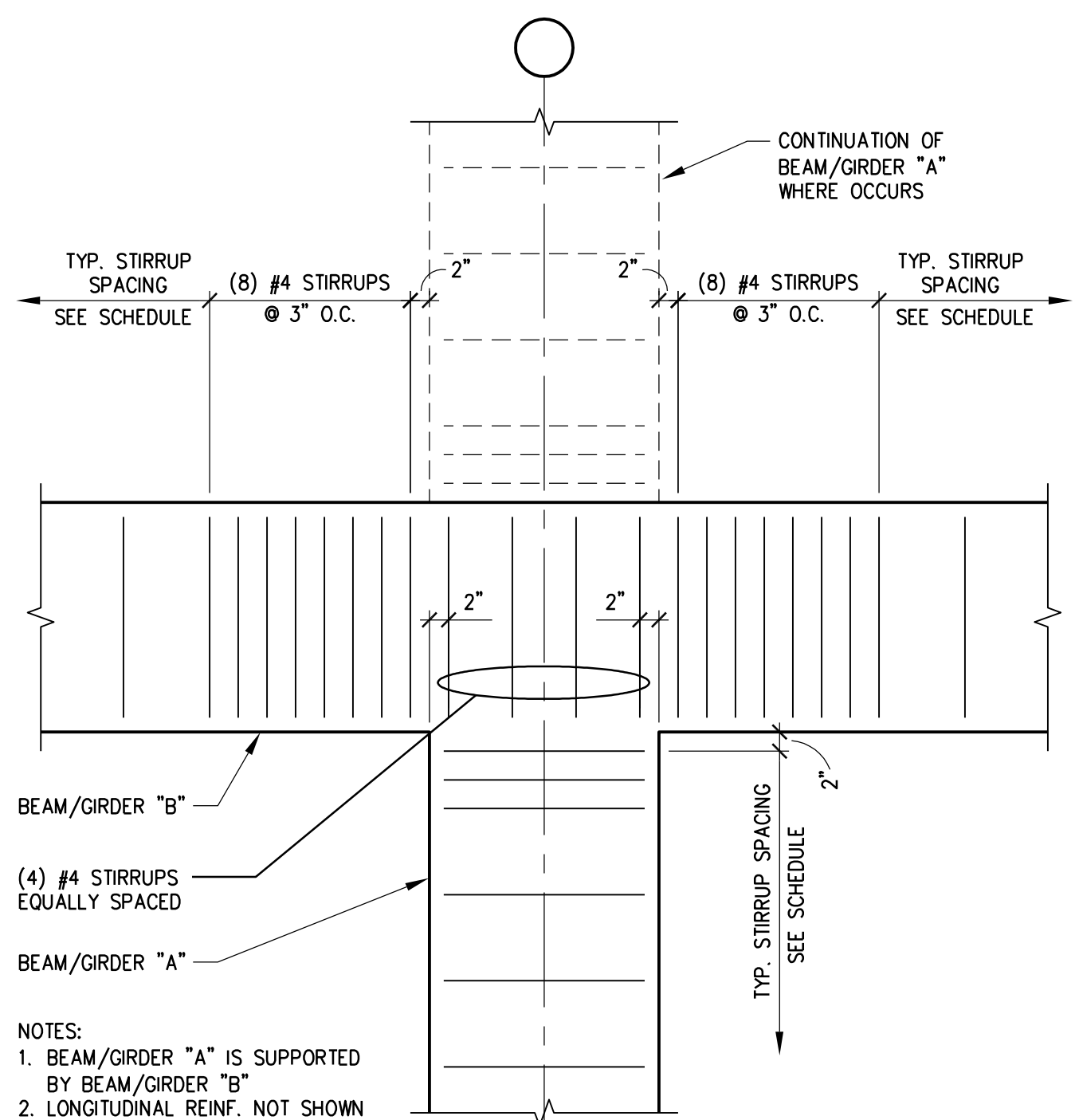
NOTE:
1. BEAM STIRRUPS NOT SHOWN FOR CLARITY.

D7 GIRDER/BEAM REINFORCEMENT AT COLUMN (AT C10)



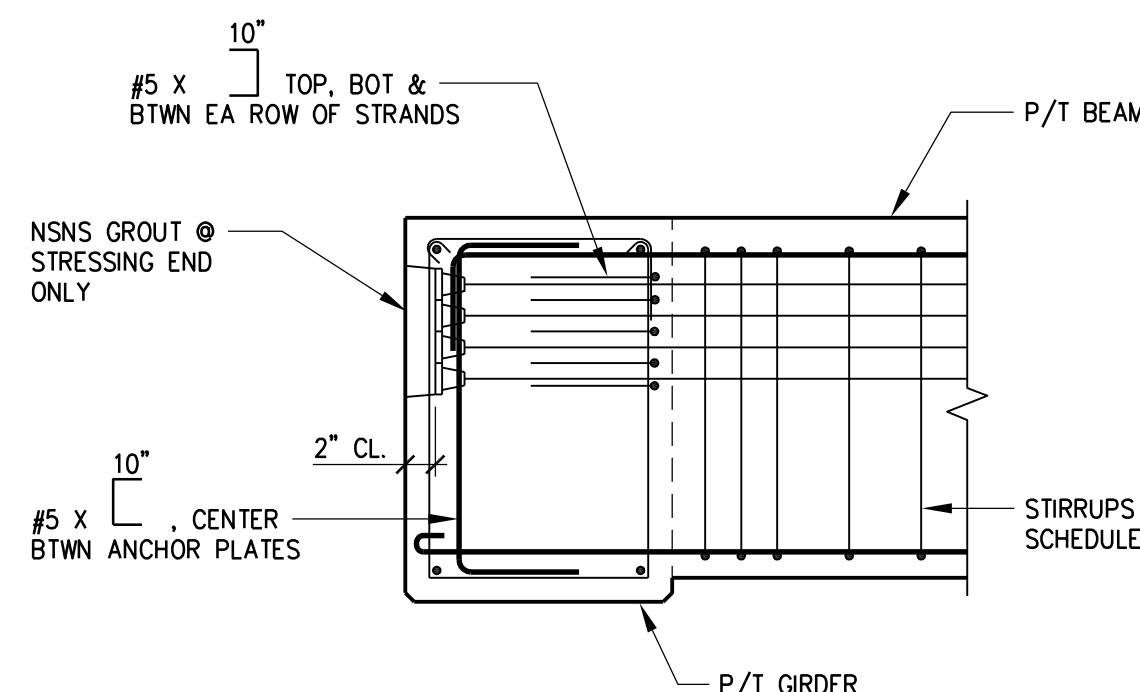
NOTE:
BEAM OR GIRDER TO REMAIN SHORED UNTIL BEAM OR GIRDER FOR THE 2nd POUR HAS BEEN STRESSED.

F1 BEAM/GIRDER @ CONSTRUCTION JOINT



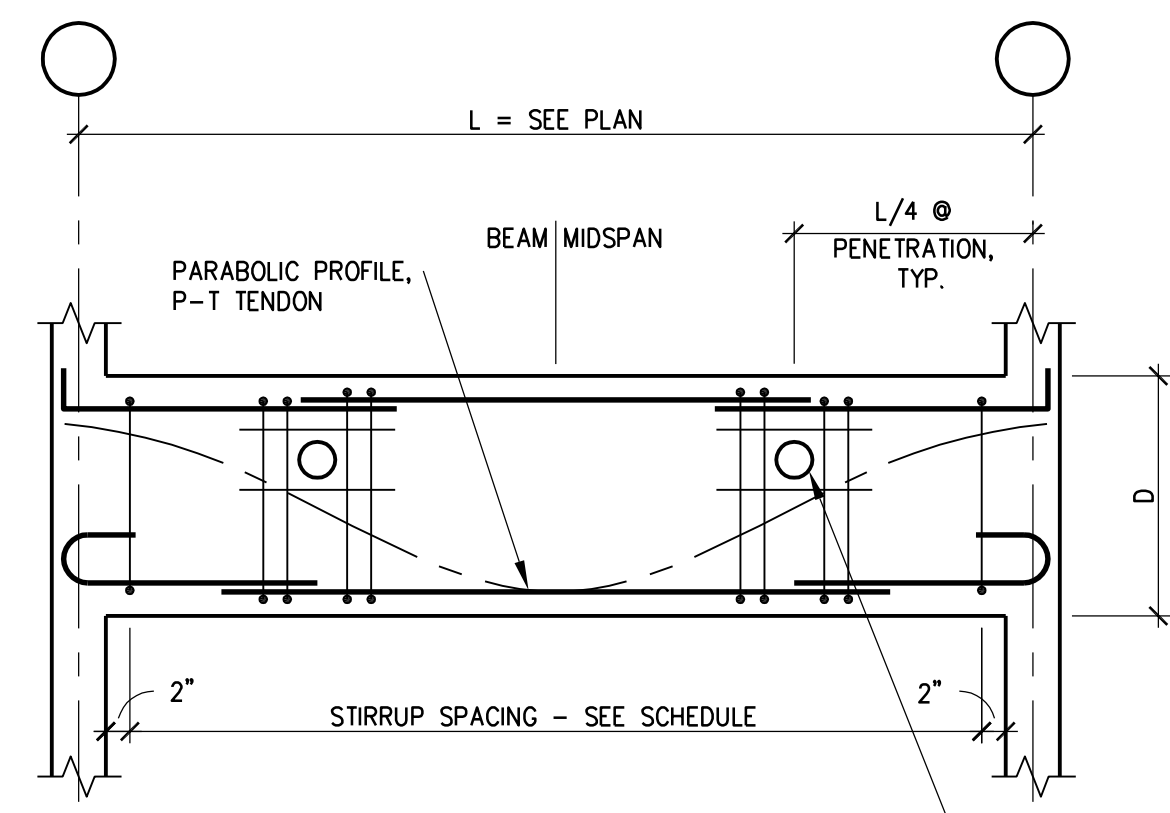
NOTES:
1. BEAM/GIRDER "A" IS SUPPORTED BY BEAM/GIRDER "B".
2. LONGITUDINAL REINF. NOT SHOWN FOR CLARITY.

F3 BEAM/GIRDER INTERSECTION PLAN




NOTE:
SEE ALSO BEAM/GIRDER INTERSECTION PLAN DETAIL F3/S-621.

F5 BEAM/GIRDER DETAIL



6" DIA. MAX SLEEVE, LOCATE PENETRATION WITHIN MIDDLE THIRD OF BEAM DEPTH "D". ADD 2 #4 STIRRUPS @ 3" O.C. EA. SIDE OF OPENING & 2 #5 x 6"-0" LONG @ TOP & BOT. OF OPENING, TYPICAL.

F7 BEAM PENETRATION DETAIL

		CONSULTANTS/ENGINEERS:										ARCHITECT:				Drawing Title		Project Title		Project Number		Office of Construction and Facilities Management			
												Loebl Schlossman & Hackl Architecture • Planning • Interiors				233 North Michigan Avenue Suite 3000 Chicago, Illinois 60601		BEAM AND GIRDER DETAILS		400 CAR PARKING GARAGE				636-402	
												Copyright © 2012 Loebl Schlossman & Hackl Inc.				312.565.1800 Telephone 312.565.5912 Facsimile www.lhdesign.com		Approved: Project Director		Location IOWA CITY, IA				Building Number 43	
																		Iowa City VA Healthcare System Department of Veterans Affairs Medical Center		Date 06/10/2011				Drawing Number S-621	
																				Dwg. 115 of 152				 Department of Veterans Affairs	