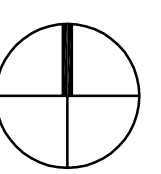
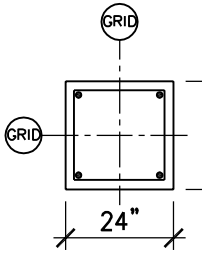
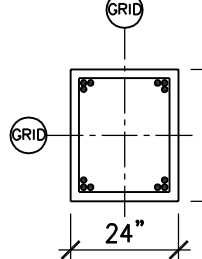
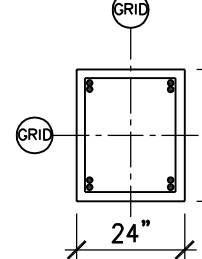
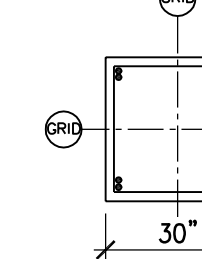
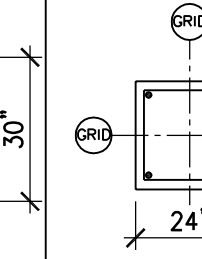
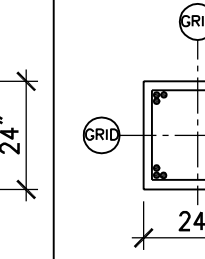
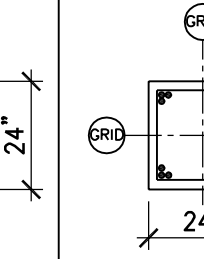
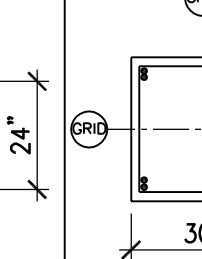
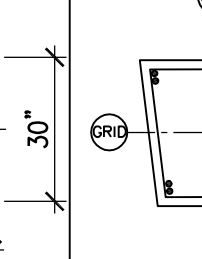
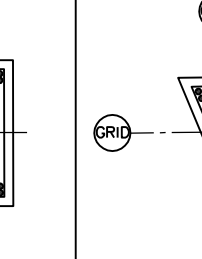
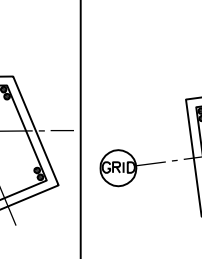
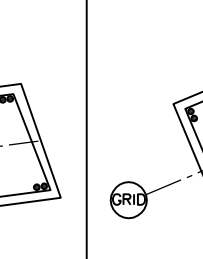
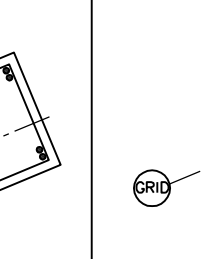
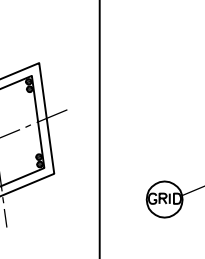
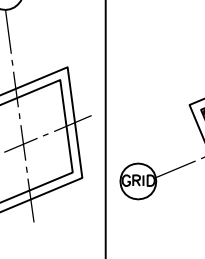
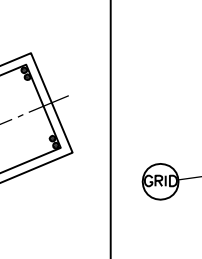
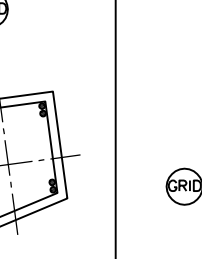
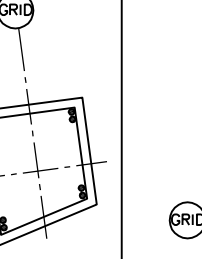
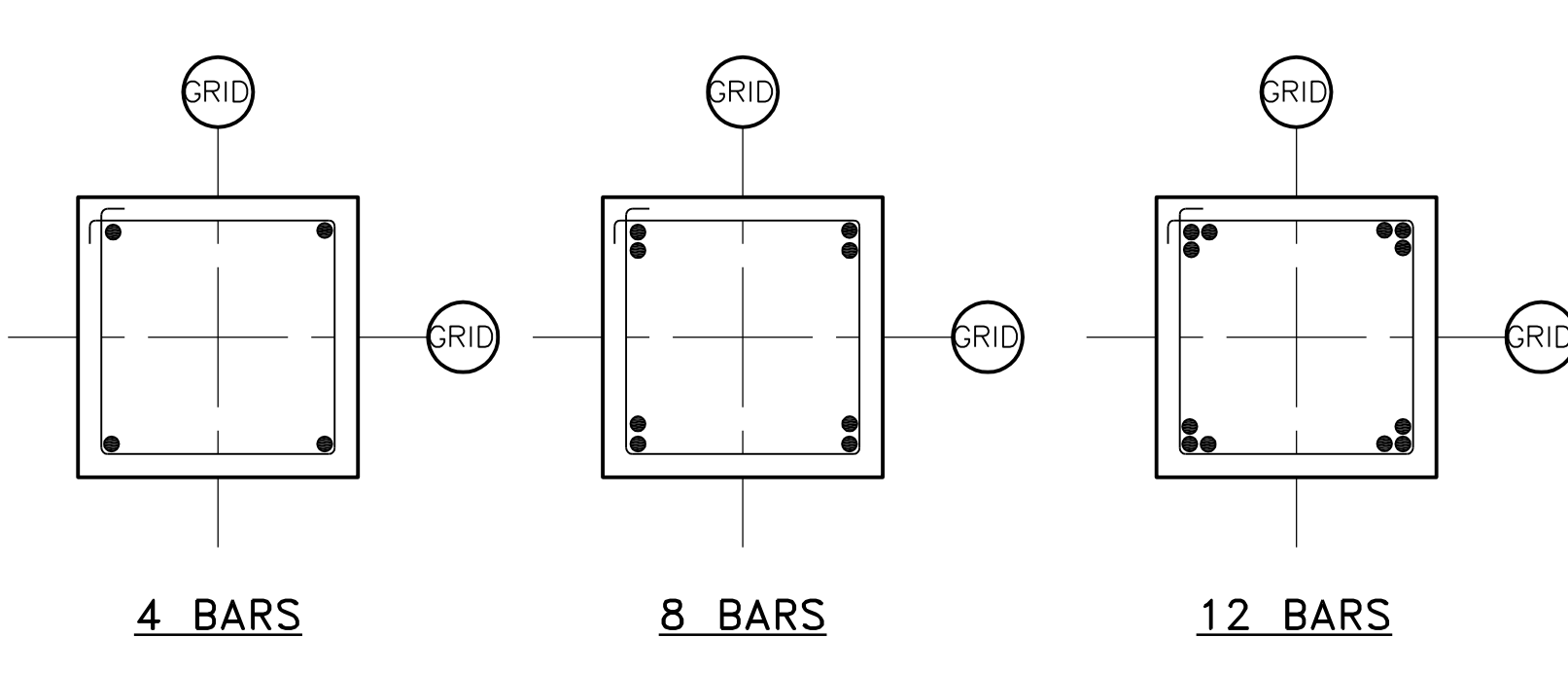


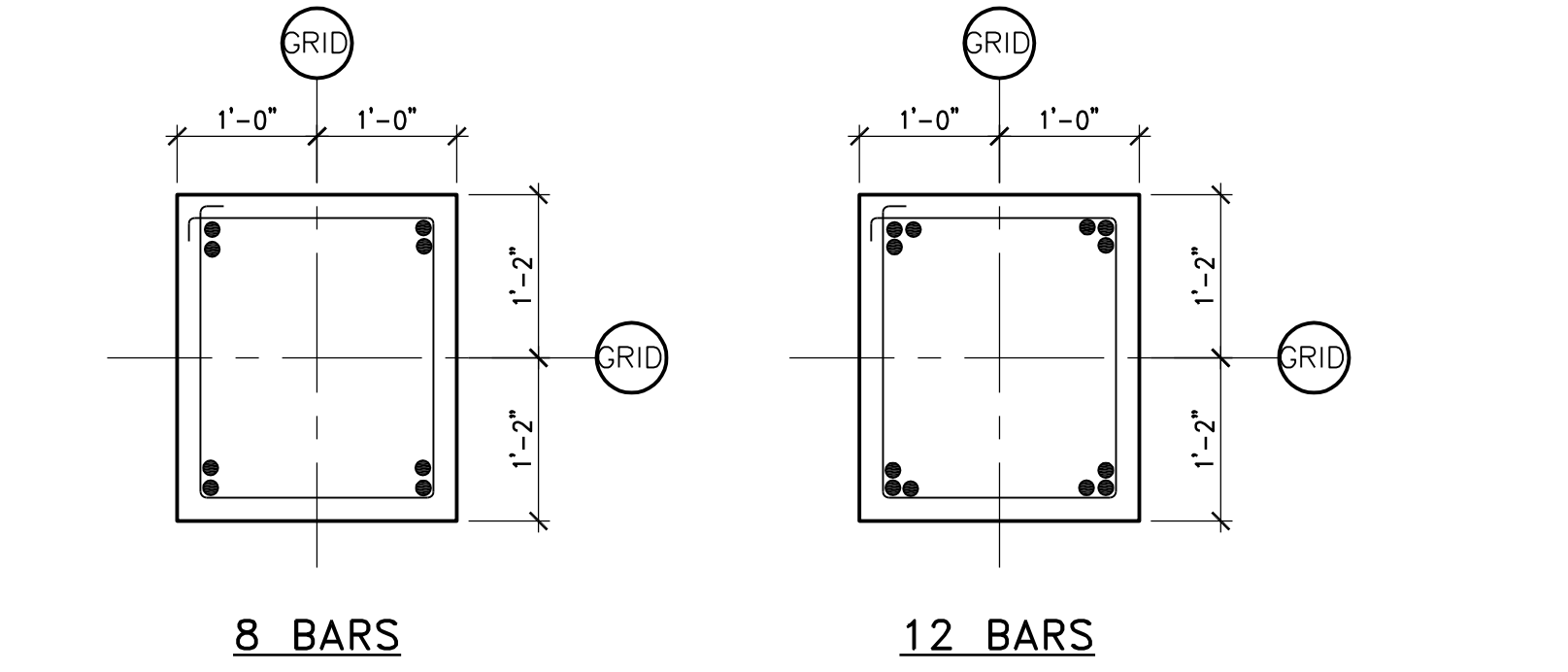
one eighth inch = one foot
one quarter inch = one foot
one half inch = one foot
three eighths inch = one foot
three quarters inch = one foot
one inch = one foot
one and one half inches = one foot
two inches = one foot
three inches = one foot
four inches = one foot
five inches = one foot
six inches = one foot
seven inches = one foot
eight inches = one foot
nine inches = one foot
ten inches = one foot
eleven inches = one foot
twelve inches = one foot
thirteen inches = one foot
fourteen inches = one foot
fifteen inches = one foot
sixteen inches = one foot
seventeen inches = one foot
eighteen inches = one foot
nineteen inches = one foot
twenty inches = one foot
twenty one inches = one foot
twenty two inches = one foot
twenty three inches = one foot
twenty four inches = one foot
twenty five inches = one foot
twenty six inches = one foot
twenty seven inches = one foot
twenty eight inches = one foot
twenty nine inches = one foot
thirty inches = one foot
thirty one inches = one foot
thirty two inches = one foot
thirty three inches = one foot
thirty four inches = one foot
thirty five inches = one foot
thirty six inches = one foot
thirty seven inches = one foot
thirty eight inches = one foot
thirty nine inches = one foot
forty inches = one foot
forty one inches = one foot
forty two inches = one foot
forty three inches = one foot
forty four inches = one foot
forty five inches = one foot
forty six inches = one foot
forty seven inches = one foot
forty eight inches = one foot
forty nine inches = one foot
fifty inches = one foot
fifty one inches = one foot
fifty two inches = one foot
fifty three inches = one foot
fifty four inches = one foot
fifty five inches = one foot
fifty six inches = one foot
fifty seven inches = one foot
fifty eight inches = one foot
fifty nine inches = one foot
sixty inches = one foot
sixty one inches = one foot
sixty two inches = one foot
sixty three inches = one foot
sixty four inches = one foot
sixty five inches = one foot
sixty six inches = one foot
sixty seven inches = one foot
sixty eight inches = one foot
sixty nine inches = one foot
seventy inches = one foot
seventy one inches = one foot
seventy two inches = one foot
seventy three inches = one foot
seventy four inches = one foot
seventy five inches = one foot
seventy six inches = one foot
seventy seven inches = one foot
seventy eight inches = one foot
seventy nine inches = one foot
eighty inches = one foot
eighty one inches = one foot
eighty two inches = one foot
eighty three inches = one foot
eighty four inches = one foot
eighty five inches = one foot
eighty six inches = one foot
eighty seven inches = one foot
eighty eight inches = one foot
eighty nine inches = one foot
ninety inches = one foot
ninety one inches = one foot
ninety two inches = one foot
ninety three inches = one foot
ninety four inches = one foot
ninety five inches = one foot
ninety six inches = one foot
ninety seven inches = one foot
ninety eight inches = one foot
ninety nine inches = one foot
one hundred inches = one foot

C.I.P. COLUMN SCHEDULE																			
MARK	C1	C2	C3	C4	C5	C6	C7	C8	C9	C10	C11	C12	C13	C14	C15	C16	C17	C18	
SIZE	24" x 24"	24" x 28"	24" x 28"	30" x 30"	24" x 24"	24" x 24"	24" x 24"	30" x 30"	SEE NOTE CN10	SEE NOTE CN10	SEE NOTE CN10	SEE NOTE CN10	SEE NOTE CN10	SEE NOTE CN10	SEE NOTE CN10	SEE NOTE CN10	SEE NOTE CN10	SEE NOTE CN10	
																			
TOP TIER																			
FOURTH TIER																			
THIRD TIER																			
SECOND TIER																			
GROUND TIER																			
TOP OF FOOTING																			
COLUMN DOWEL																			
REMARKS																			

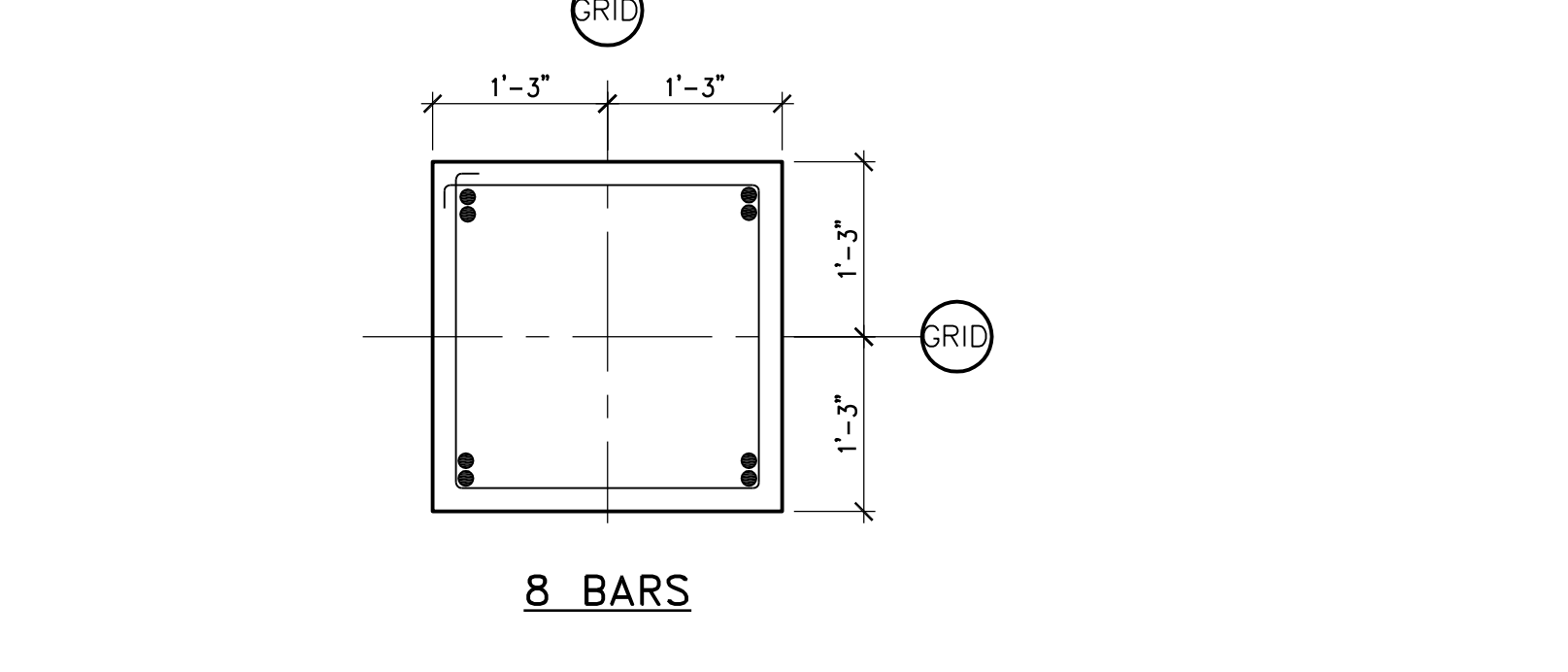
COLUMN NOTES:
CN1. SEE SHEET S-001 FOR GENERAL NOTES.
CN2. SEE SHEET S-100 FOR COLUMN MARKS.
CN3. ALL COLUMN TIES ARE #4 TIES. LOCATE TIES AS FOLLOWS:
a. AT 10" O.C. TYPICAL U.N.
b. PROVIDE 3 TIES @ 4" O.C. AT TOP OF COLUMN (OR ABOVE TOP LEVEL) & BOTTOM OF COLUMN (OR FOUNDATION).
c. SEE DETAILS ON SHEET S-610 AND S-611 FOR ADDITIONAL TIES.
CN4. FOR ADDITIONAL EMBEDDED ITEMS, I.E. CONDUIT, LIGHTING CONNECTION, DRAIN LINES, ETC. COORDINATE WITH OTHER TRADES.
CN5. FOR COLUMN DOWELS AT FOUNDATION SEE SHEET S-610. COORDINATE WITH ELECTRICAL DRAWINGS FOR COLUMNS TO BE EXTENDED FOR LIGHT POLES AND FOR ANCHOR BOLT REQUIREMENTS.
CN6. MORE THAN ONE BAR SHOWN SIDE BY SIDE SHALL BE CONSIDERED BUNDLED BARS. BUNDLED BARS ARE GROUPS OF PARALLEL REINFORCING BARS, NO MORE THAN FOUR, BUNDLED IN CONTACT TO ACT AS A UNIT. LAP SPLICES ARE NOT ALLOWED FOR BUNDLED BARS AND MECHANICAL SPLICES MUST BE USED. SEE DETAIL F5/S-611.
CN7. LAP SPLICES SHALL NOT BE USED FOR COLUMNS SUPPORTING OFFSET FLOORS DUE TO RAMPS. MECHANICAL SPLICES MUST BE USED. SEE DETAIL D7/S-611.
CN8. COORDINATE COLUMN REINFORCEMENT, MECH. SPLICES AND LAP SPLICES WITH SLEEVES FOR BARRIER STRAND. SEE F7/S-611.
CN9. SEE SHEET S-401 FOR COLUMN SIZE, ORIENTATION AND SHAPE AT GRIDS E/1, C/20, A/7/21, D/18, C/21, A/7/16A, A/1, D/20, B/21 AND A/16A.



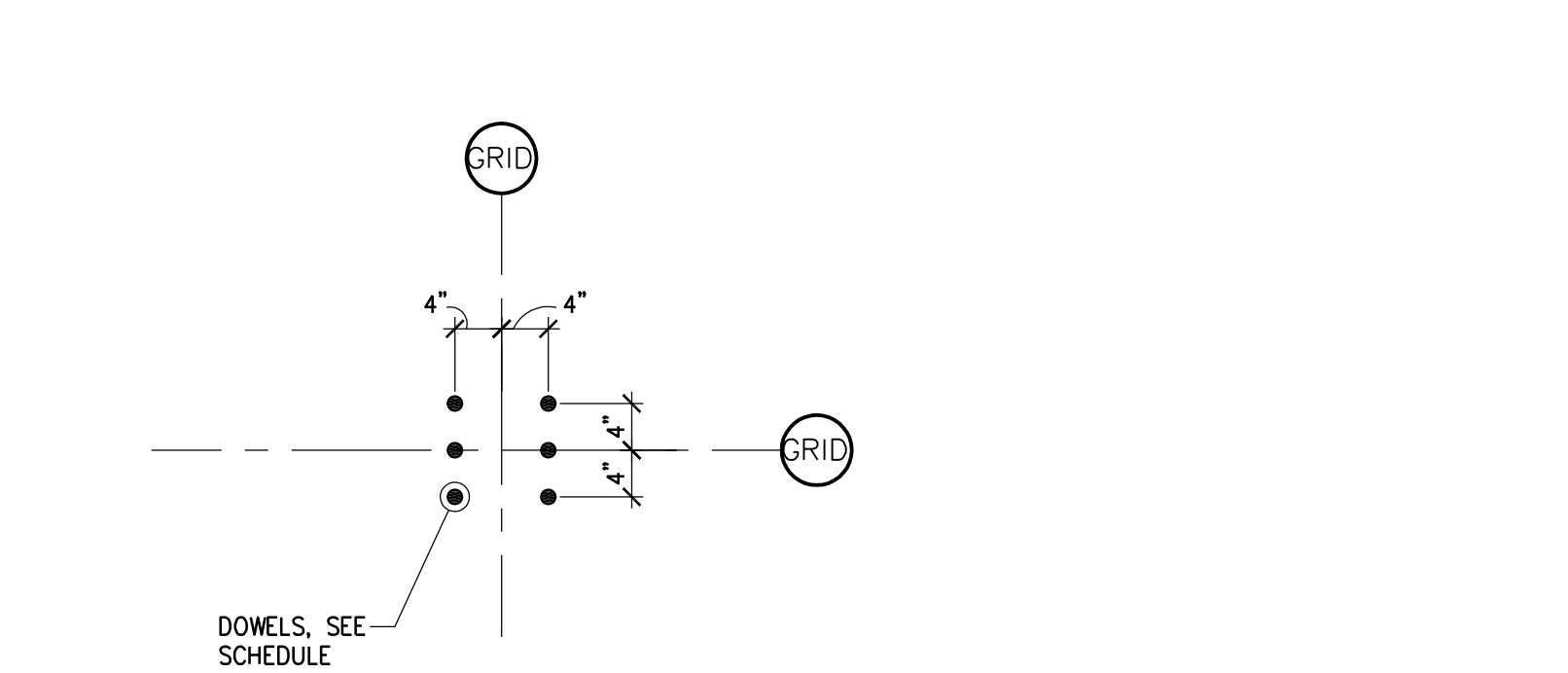
D1 24"x24" COLUMN REBAR ARRANGEMENT



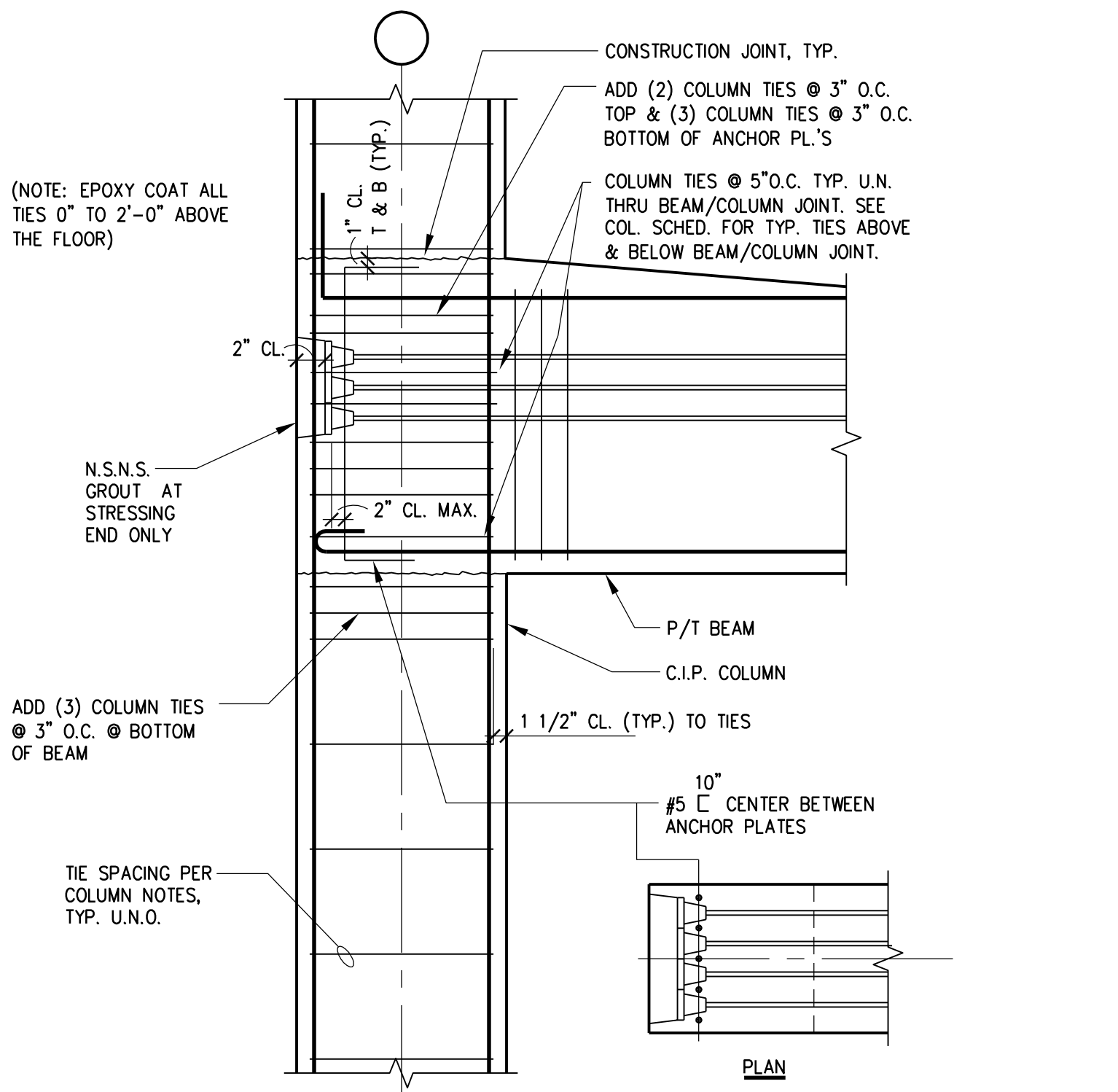
D2 24"x28" COLUMN REBAR ARRANGEMENT



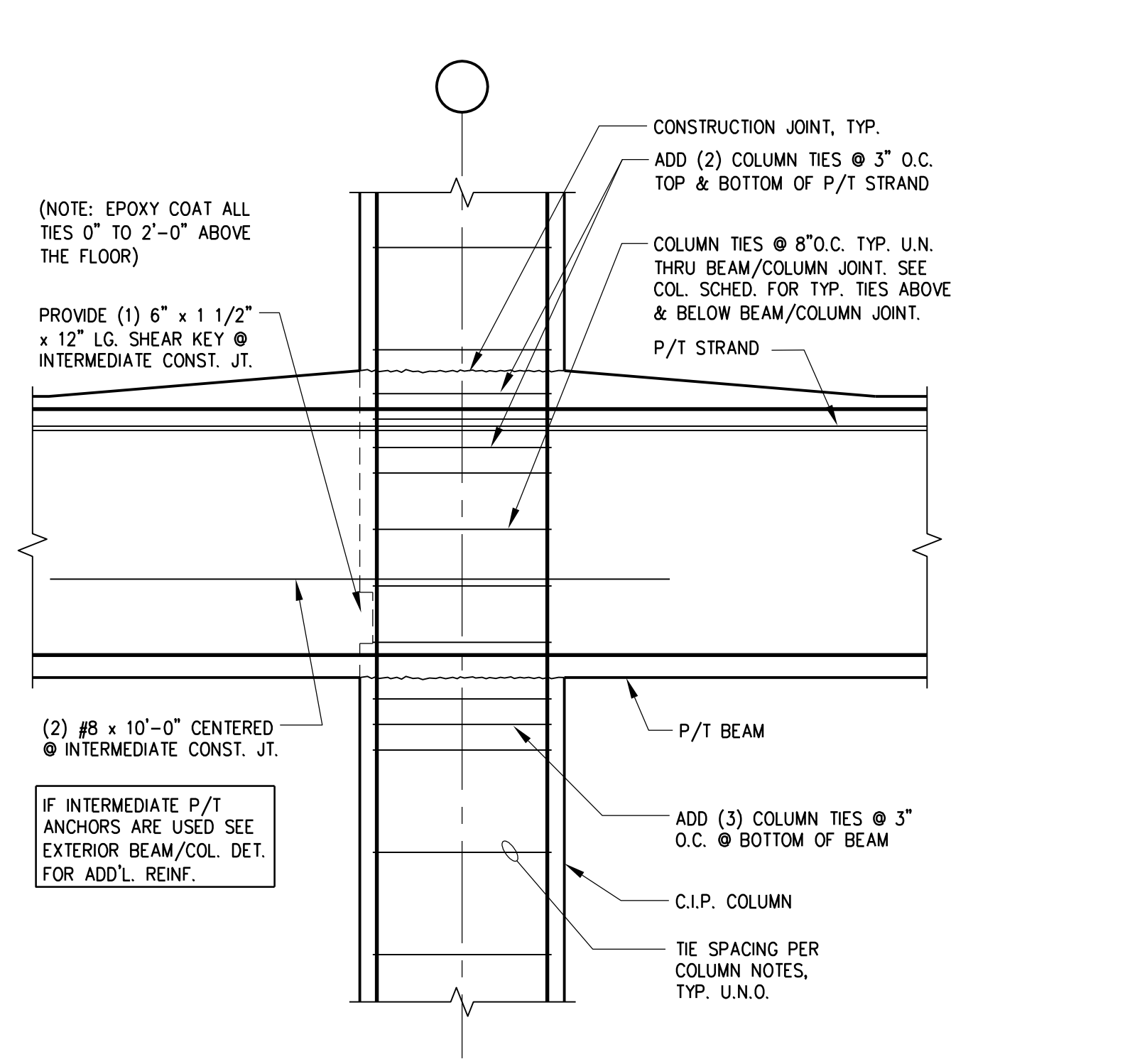
D5 30"x30" COLUMN REBAR ARRANGEMENT



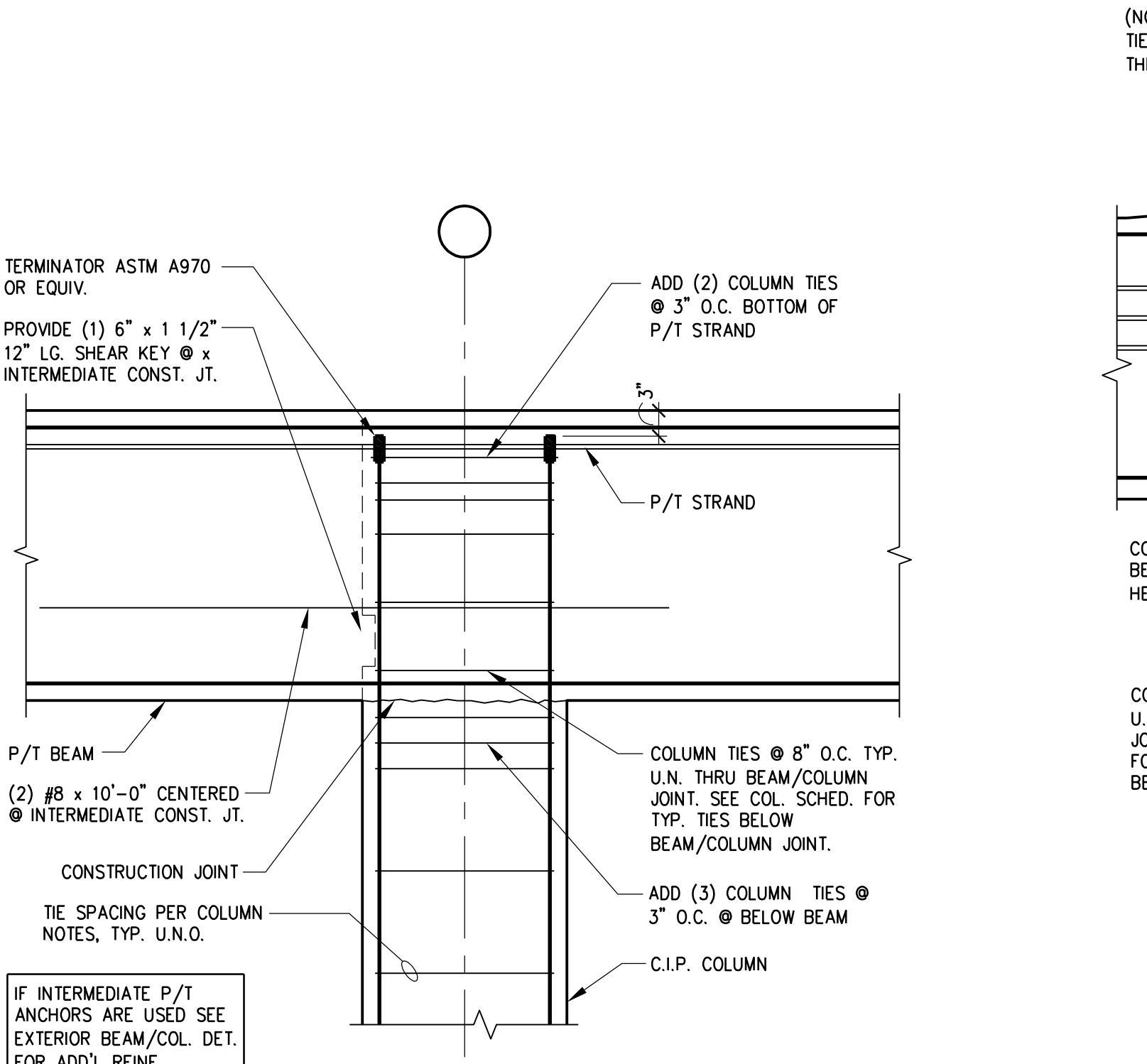
D7 COLUMN DOWELS



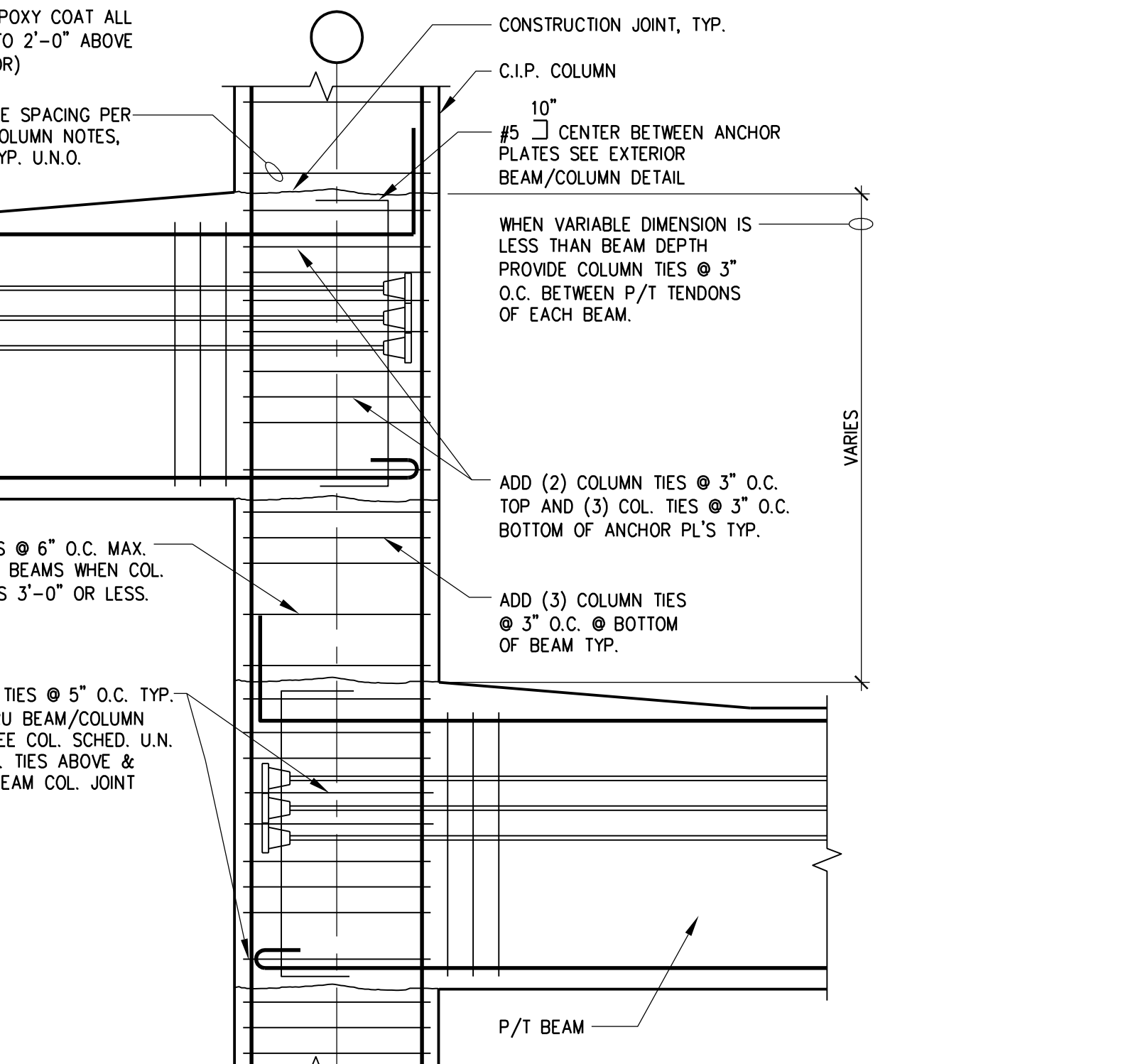
F1 EXTERIOR BEAM / COLUMN DETAIL




F3 INTERIOR BEAM / COLUMN DETAIL



F5 INTERIOR BEAM/COLUMN DETAIL



F7 INTERIOR BEAM/COLUMN DETAIL

CONSULTANTS/ENGINEERS: KJMW ENGINEERING CONSULTANTS Mechanical/Electrical/Plumbing Engineer 623 26TH AVENUE ROCK ISLAND, ILLINOIS 61201 309.788.0673 Telephone 309.786-5967 Fax 06/10/11 04/11/11 02/03/11 01/19/11 11/22/10 Revisions: _____ Date _____	TERRACON Geotechnical Engineer 2640 12TH STREET SW CEDAR RAPIDS, IOWA 52404 319.366.8321 Telephone 319.366.0032 Fax	GRAF Civil Engineer/Landscape Architect 332 SOUTH MICHIGAN, SUITE 1400 CHICAGO, ILLINOIS 60604-4367 312.582.2020 Telephone 312.939.7014 Fax	WALKER PARKING CONSULTANTS Structural Engineer 305 DAVIS ROAD ELGIN, ILLINOIS 60123 847.697.2640 Telephone 847.697.7439 Fax	FAITHFUL+GOULD Cost Management 222 SOUTH RIVERSIDE PLAZA, SUITE 2240 CHICAGO, ILLINOIS 60606 312.612.6319 Telephone 312.655.9037 Fax	ARCHITECT: Loebl Schlossman & Hackl Architecture • Planning • Interiors 233 North Michigan Avenue Suite 3000 Chicago, Illinois 60601 312.565.1800 Telephone 312.565.5912 Facsimile www.lshdesign.com	Drawing Title COLUMN SCHEDULE AND DETAILS Approved: Project Director Iowa City VA Healthcare System Department of Veterans Affairs Medical Center	Project Title 400 CAR PARKING GARAGE Location IOWA CITY, IA Date 06/10/2011 Checked BFN Drawn MJK	Project Number 636-402 Building Number 43 Drawing Number S-610 Dwg. 112 of 152	Office of Construction and Facilities Management  Department of Veterans Affairs
---	---	---	---	--	--	---	---	---	--