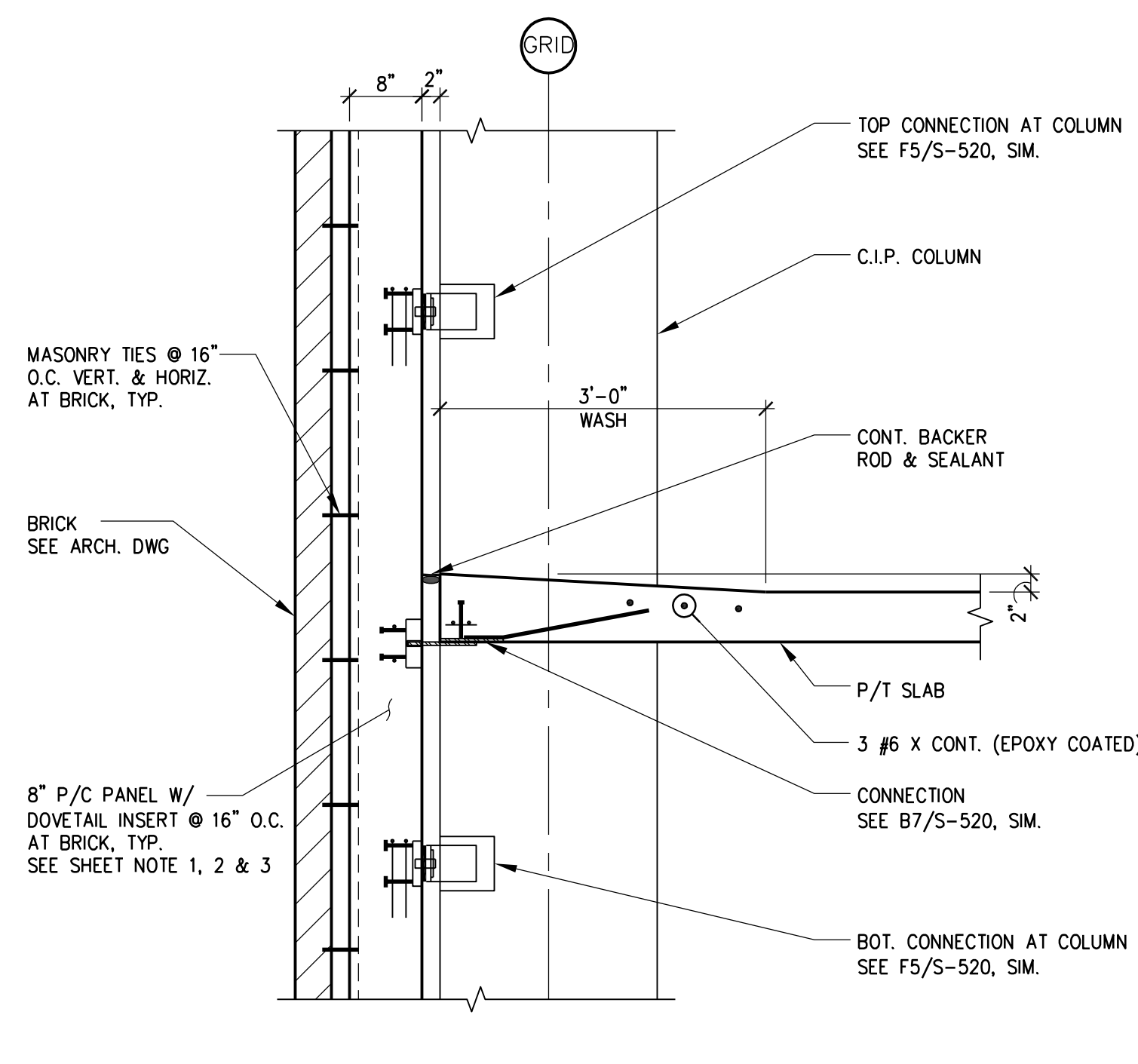
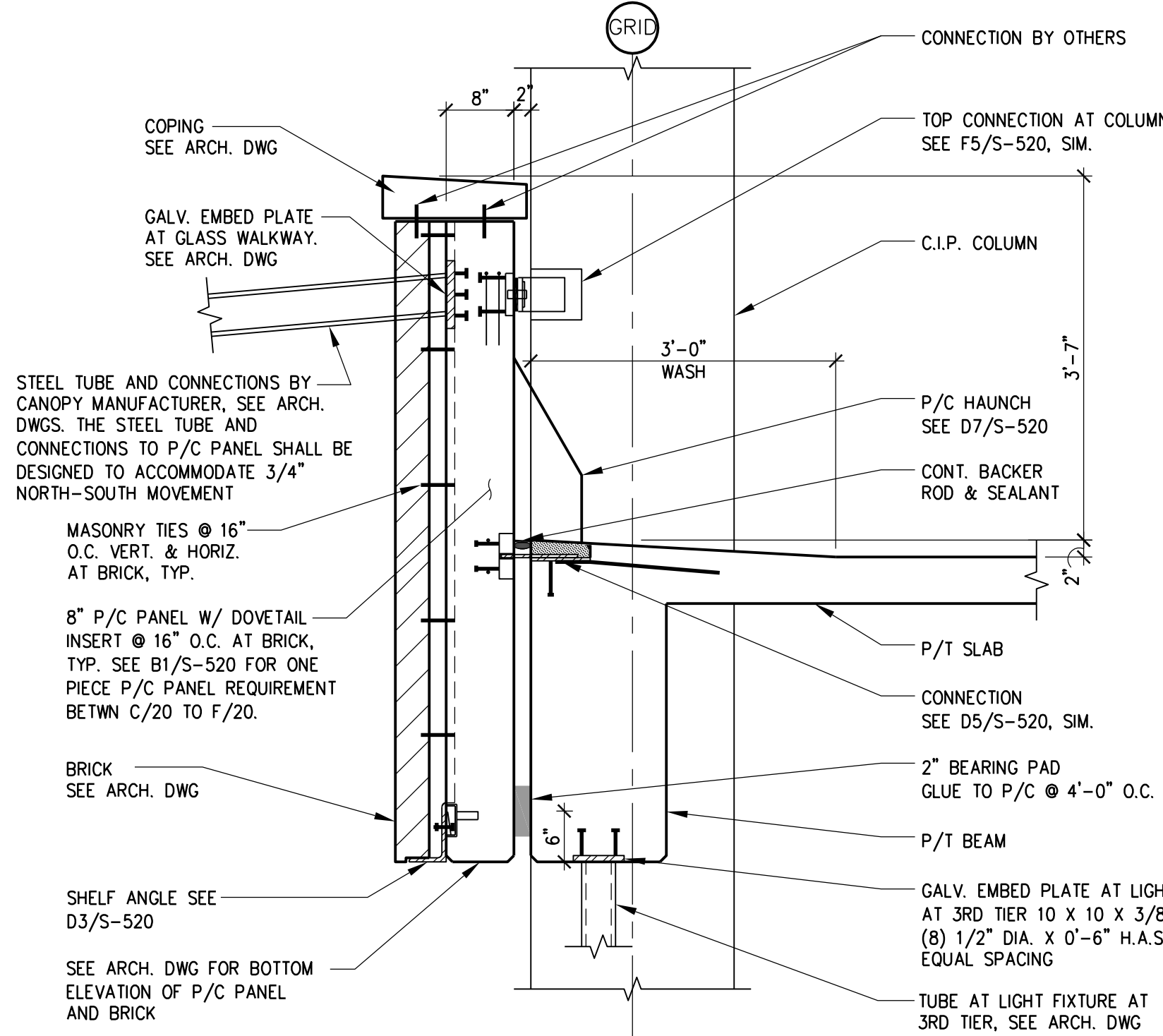


**B1** SECTION

NOTE:  
1. 8" C.I.P. WALL NOT SHOWN ALONG GRID A. SEE B5/S-520 FOR 8" C.I.P. WALL ALONG GRID A

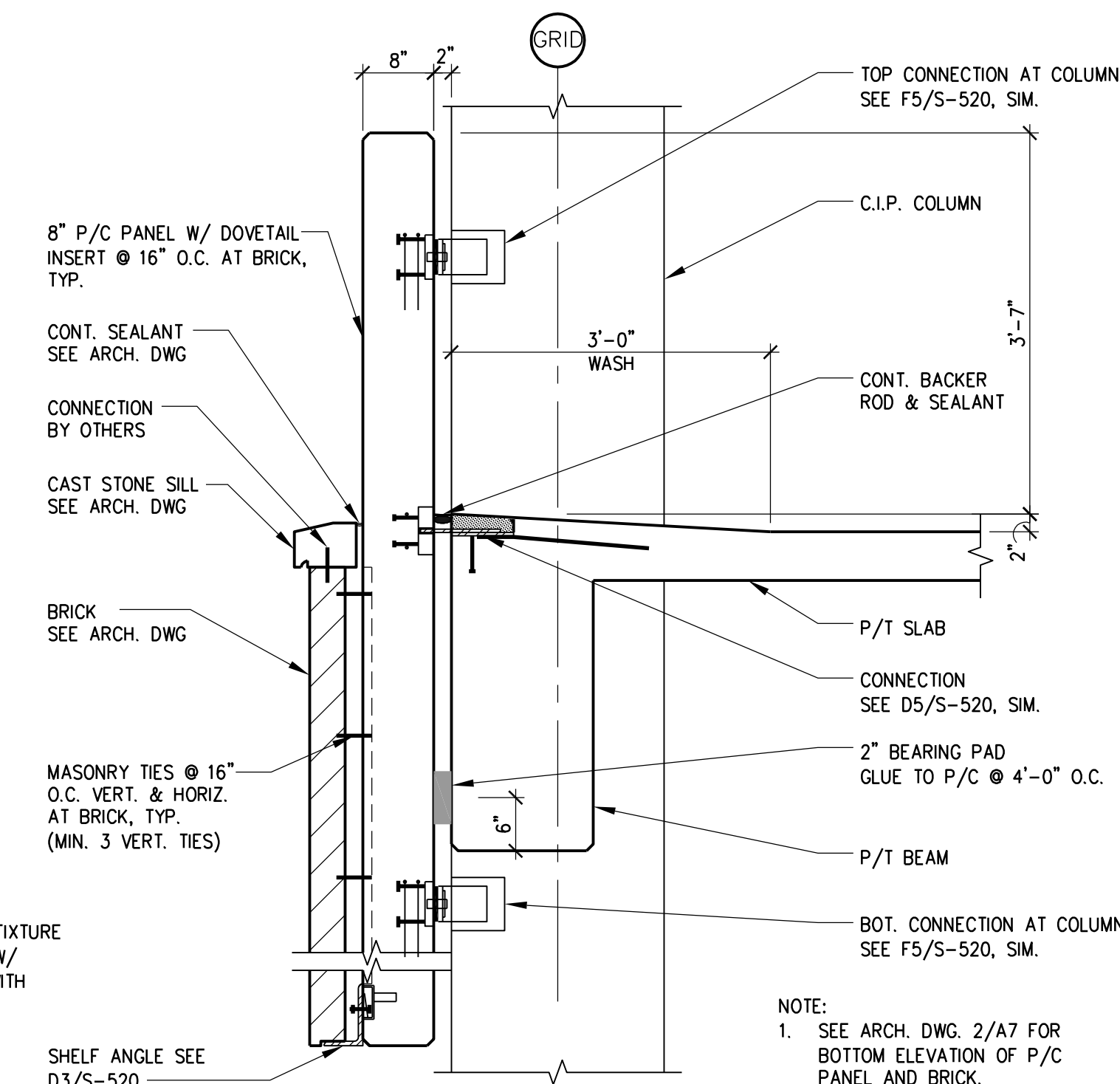


**B3** SECTION



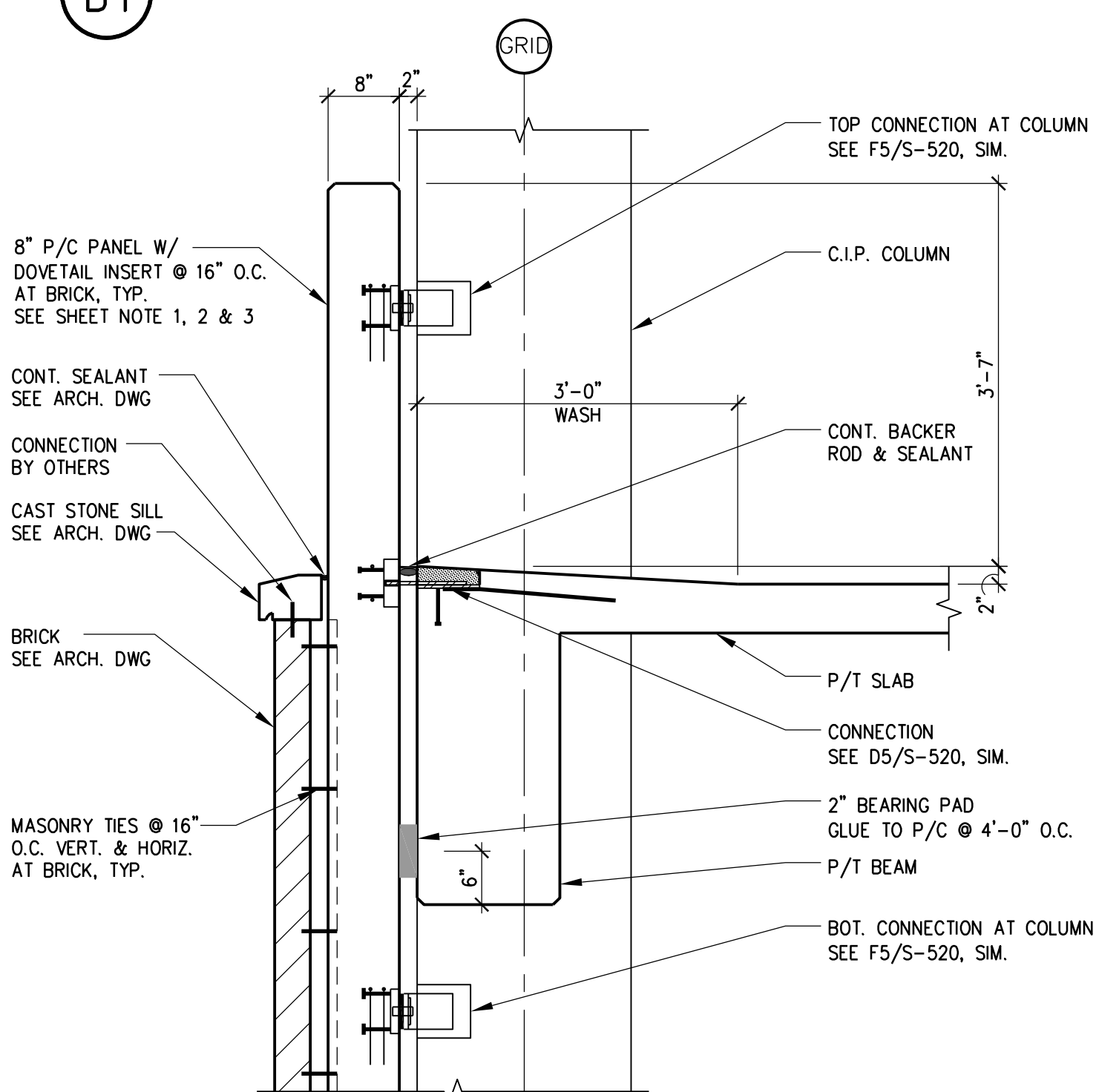
**B5** SECTION

NOTE:  
1. 8" C.I.P. WALL NOT SHOWN ALONG GRID A. SEE B5/S-520 FOR C.I.P. WALL ALONG GRID A

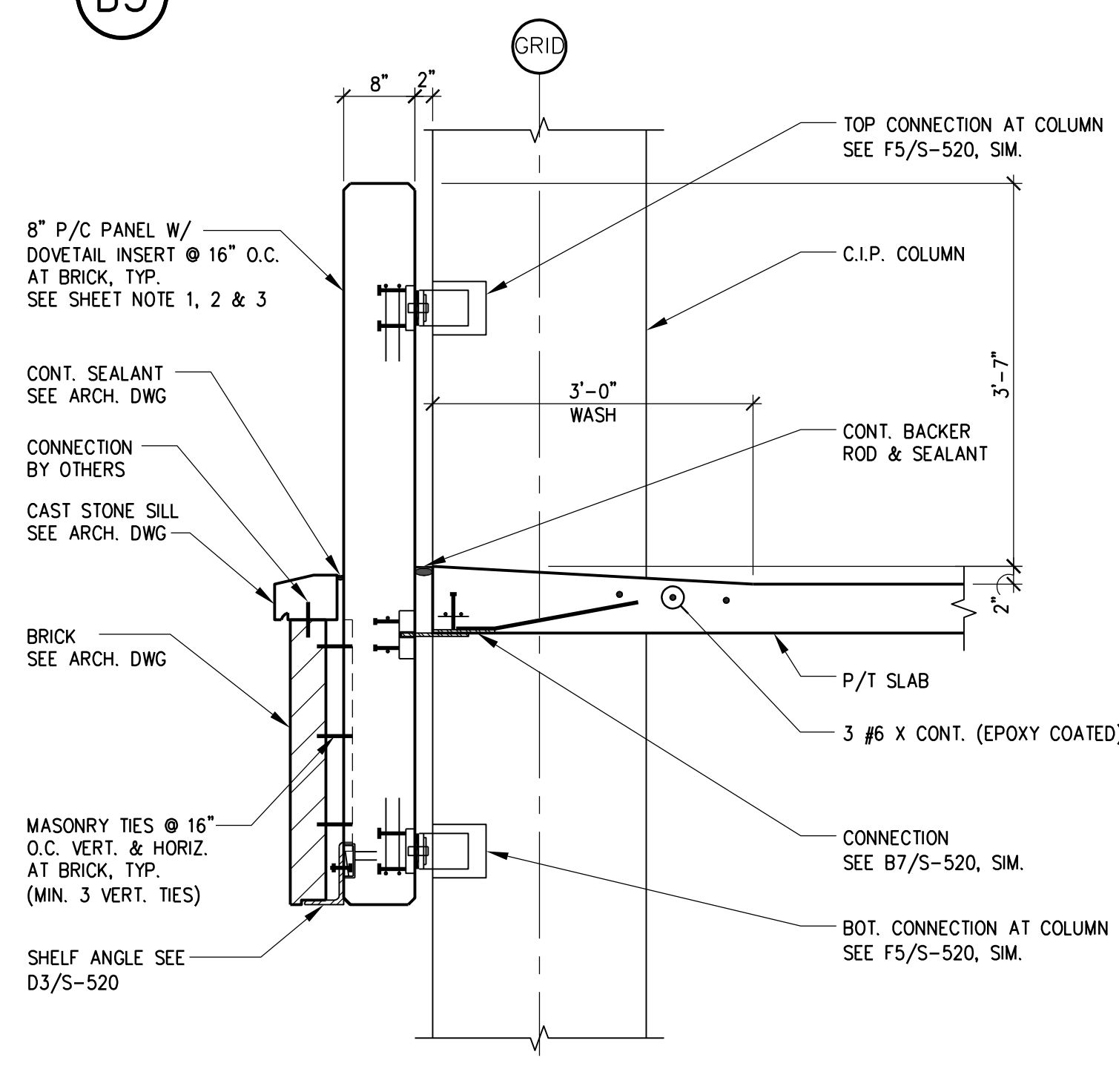


**B7** SECTION

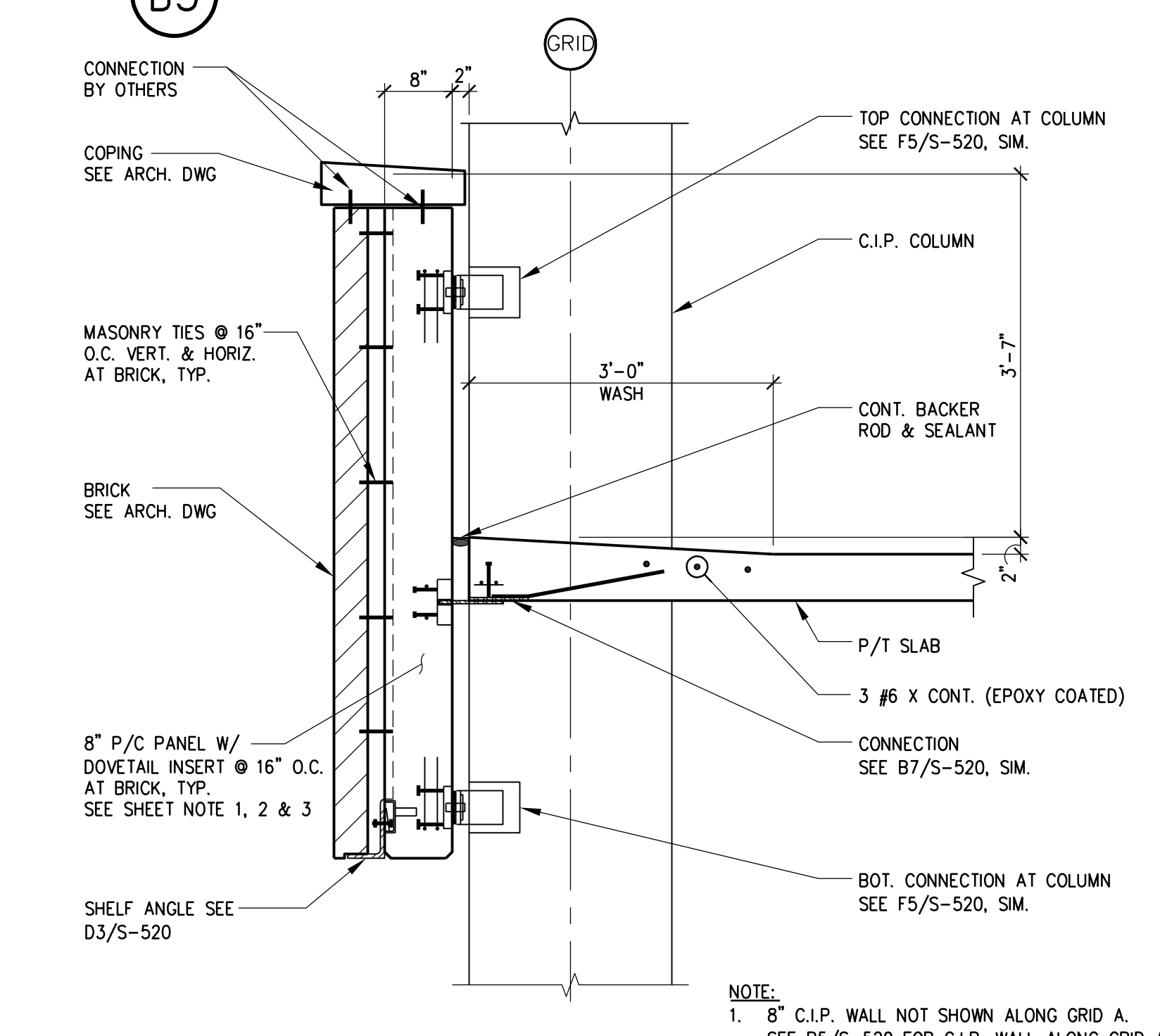
- SHEET NOTES:**
1. TYPICALLY, PRECASTER SHALL DESIGN THE 8" P/C PANEL WITH BRICK AS THE FOLLOWINGS:  
a. FOR LATERAL LOAD:  
THE 8" P/C PANEL IS TIED TO THE GARAGE DECK WITH THE MULTI-DIRECTIONAL INSERT. SEE DETAIL D3/S-520 AND B7/S-520.  
b. FOR GRAVITY LOAD:  
AT OPENING, THE 8" P/C PANEL SHALL SUPPORT THE BRICK BY THE SHELF ANGLE. SEE DETAIL D3/S-520.  
ALL THE GRAVITY LOADS INCLUDE THE 8" P/C PANEL SELF-WEIGHT AND BRICK ARE SUPPORTED BY THE FOUNDATION C.I.P. WALLS/GRADE BEAMS.
  2. LOCATE THE 8" P/C PANEL VERTICAL PIECE JOINT AT THE LOCATION OF BRICK EXPANSION JOINT, SEE DETAIL D5/S-522. DO NOT LOCATE THE 8" P/C PANEL VERTICAL PIECE JOINT OUTSIDE THE BRICK EXPANSION JOINT.
  3. AT BRICK EXPANSION JOINT WHERE THE 8" P/C PANEL IS CONTINUOUS, SEE DETAIL D7/S-522.



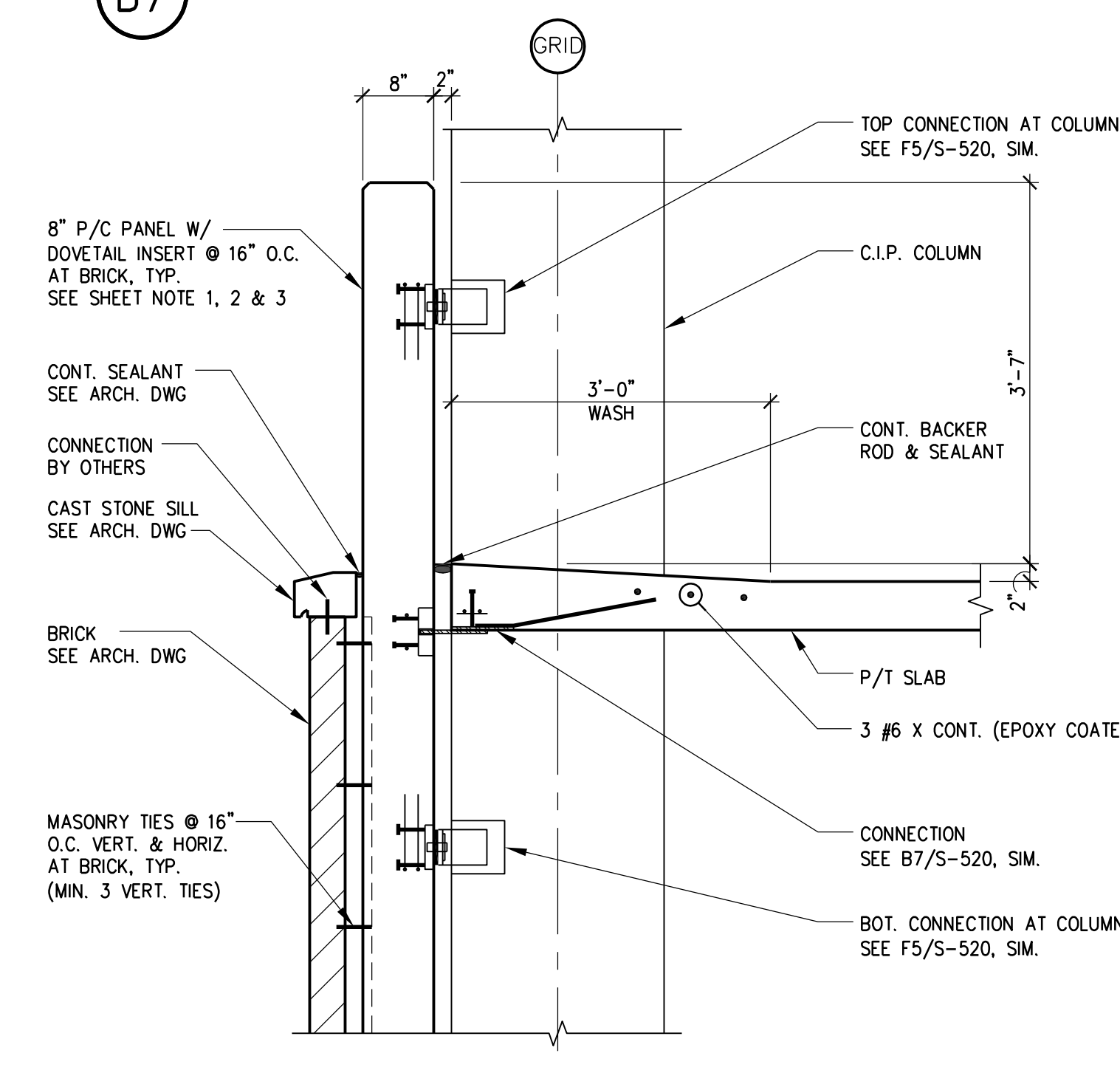
**D1** SECTION



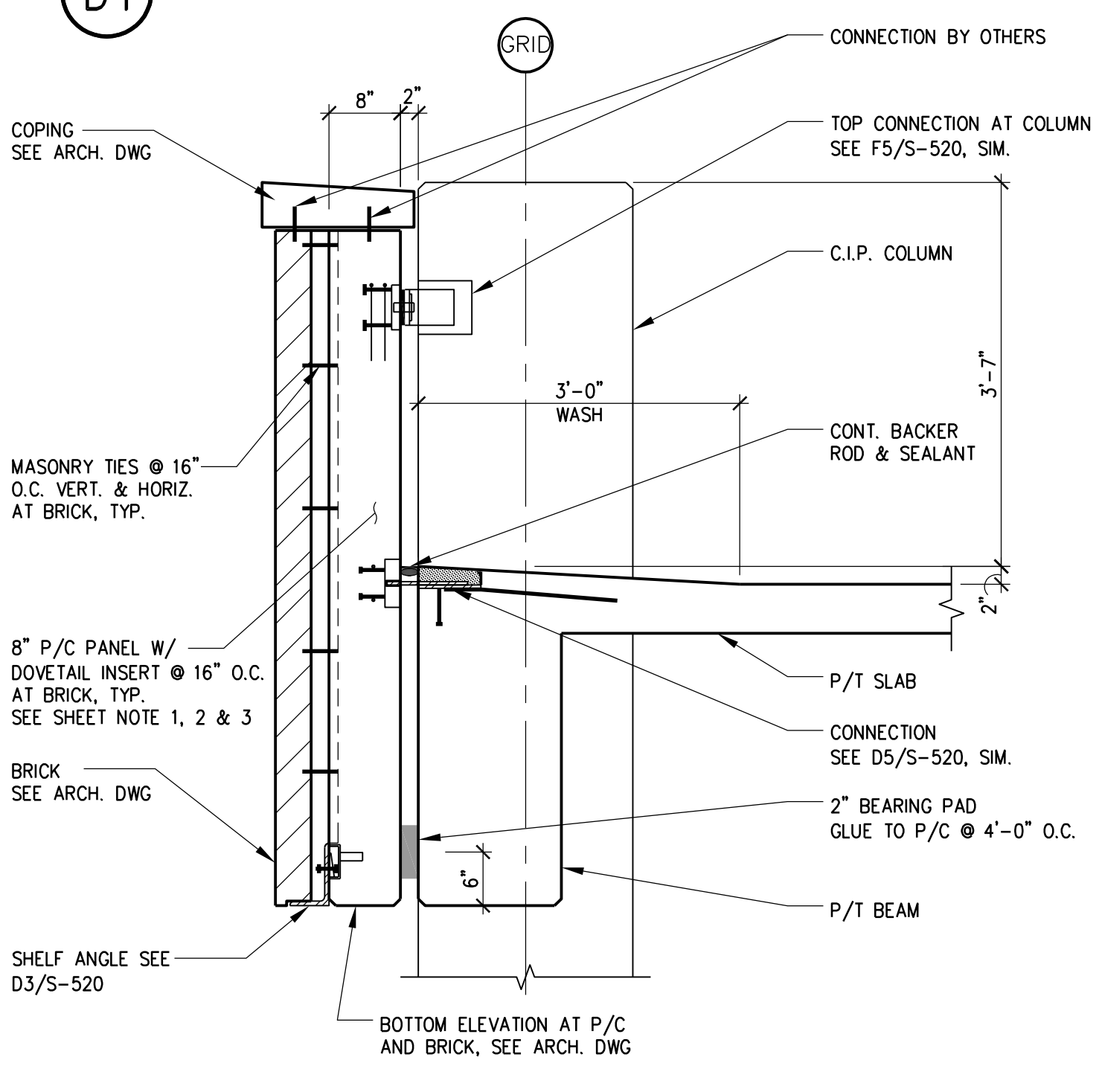
**D3** SECTION



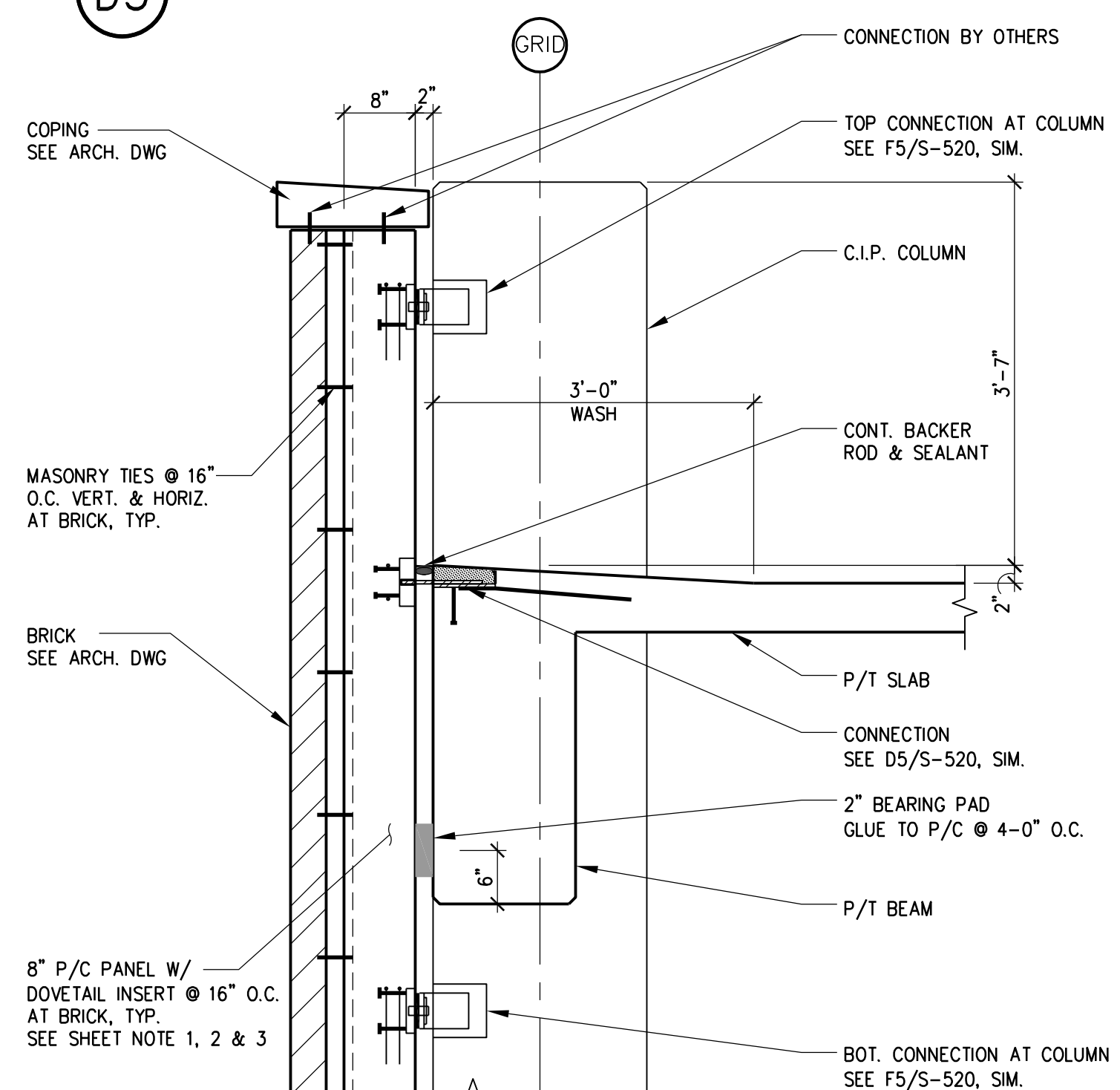
**D5** SECTION



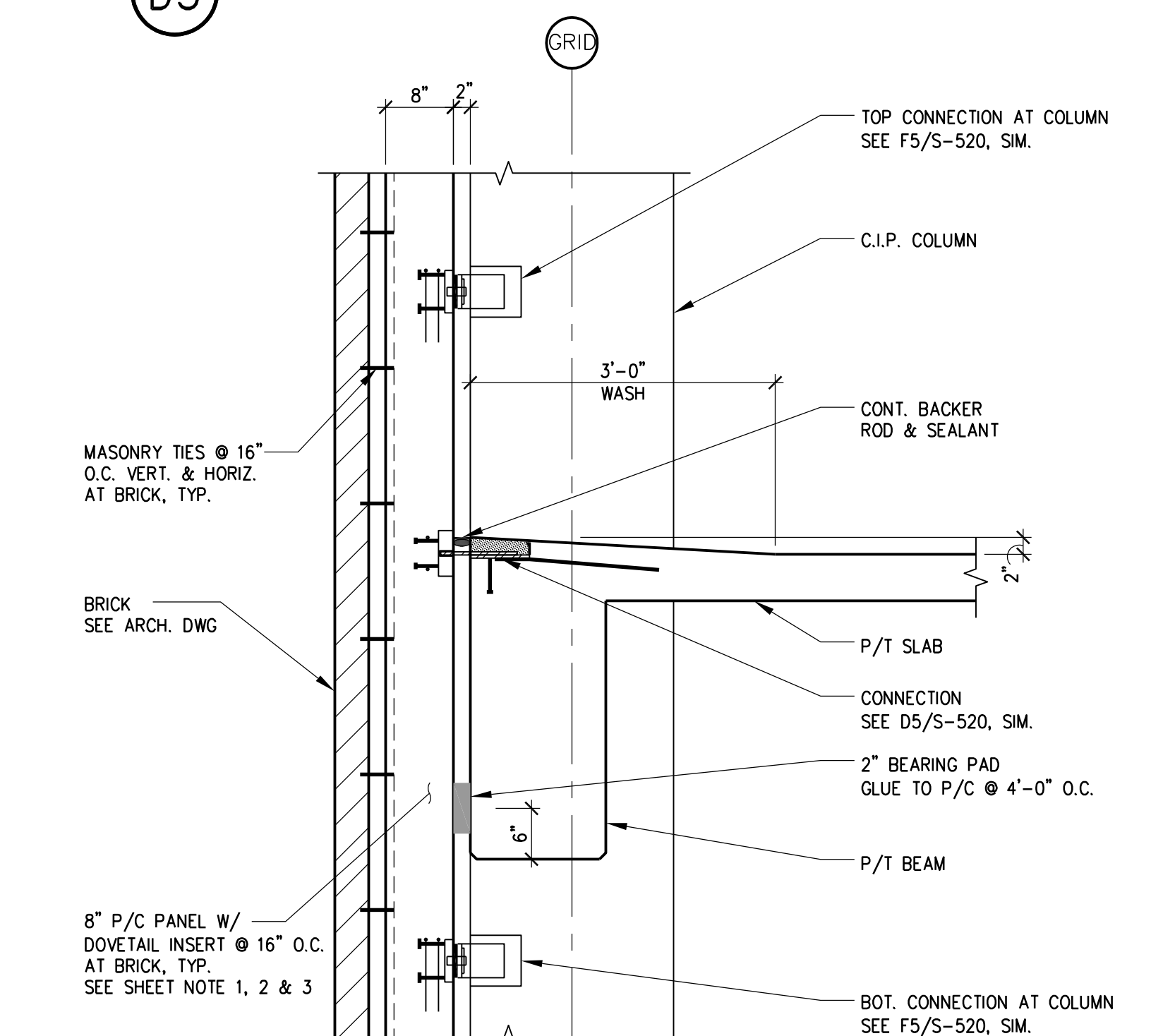
**D7** SECTION



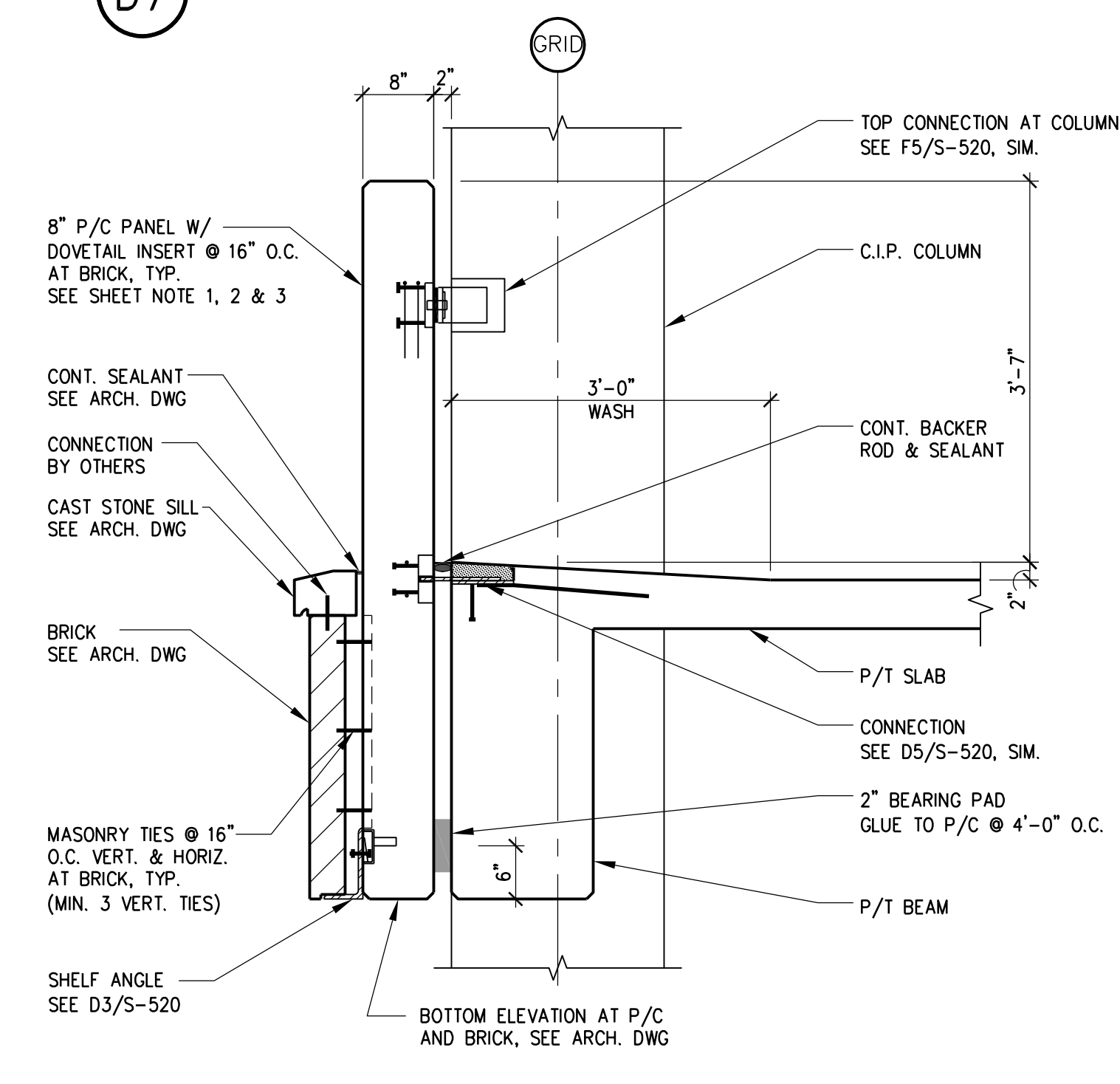
**F1** SECTION



**F3** SECTION



**F5** SECTION



**F7** SECTION

<b>CONSULTANTS/ENGINEERS:</b> <b>KJMW ENGINEERING CONSULTANTS</b> Mechanical/Electrical/Plumbing Engineer 623 26TH AVENUE ROCK ISLAND, ILLINOIS 61201 309.788.0673 Telephone 309.786-5967 Fax		<b>TERRACON</b> Geotechnical Engineer 2640 12TH STREET SW CEDAR RAPIDS, IOWA 52404 319.366.8321 Telephone 319.366.0032 Fax	<b>GRAF</b> Civil Engineer/Landscape Architect 332 SOUTH MICHIGAN, SUITE 1400 CHICAGO, ILLINOIS 60604-4367 312.582.2020 Telephone 312.939.7014 Fax	<b>WALKER PARKING CONSULTANTS</b> Structural Engineer 305 DAVIS ROAD ELGIN, ILLINOIS 60123 847.697.2640 Telephone 847.697.7439 Fax	<b>FAITHFUL+GOULD</b> Cost Management 222 SOUTH RIVERSIDE PLAZA, SUITE 2240 CHICAGO, ILLINOIS 60606 312.612.6319 Telephone 312.655.9037 Fax	<b>ARCHITECT:</b> <b>Loebl Schlossman &amp; Hackl</b> Architecture • Planning • Interiors 233 North Michigan Avenue Suite 3000 Chicago, Illinois 60601 312.565.1800 Telephone 312.565.5912 Facsimile www.lshdesign.com	Drawing Title <b>STRUCTURAL DETAILS</b> Approved: Project Director <b>Iowa City VA Healthcare System</b> Department of Veterans Affairs Medical Center	Project Title <b>400 CAR PARKING GARAGE</b> Location <b>IOWA CITY, IA</b> Date <b>06/10/2011</b> Checked <b>BFN</b> Drawn <b>MJK</b>	Project Number <b>636-402</b> Building Number <b>43</b> Drawing Number <b>S-521</b> Dwg. 108 of 152	Office of Construction and Facilities Management Department of Veterans Affairs
---	--	---	---	---	--	--	--	---	---	--