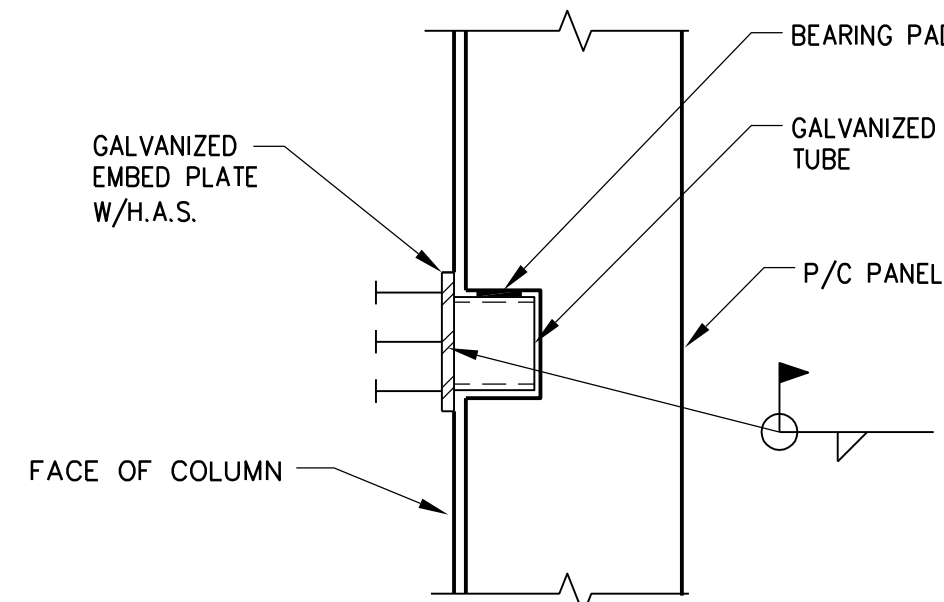
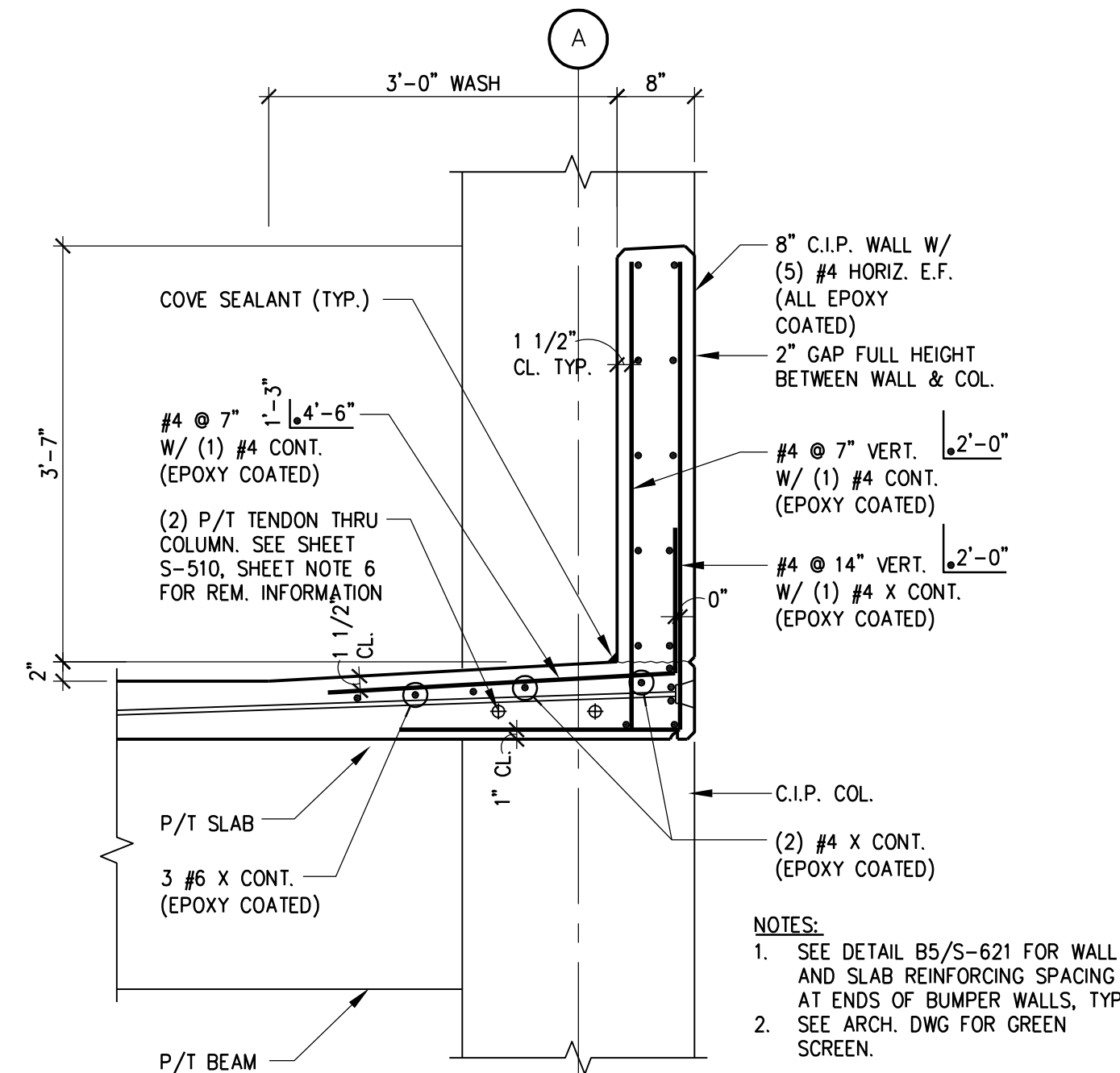


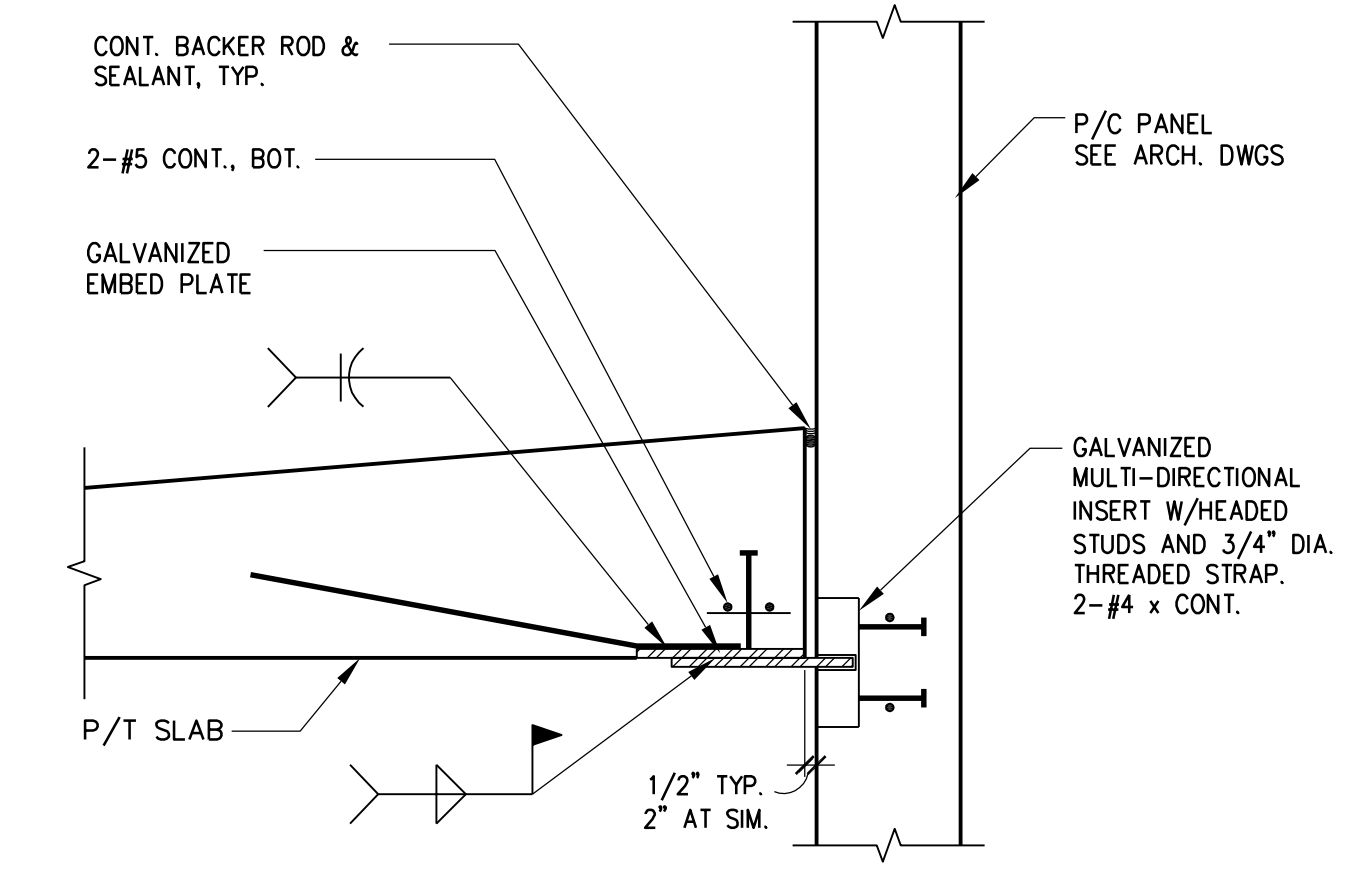
B1 SECTION



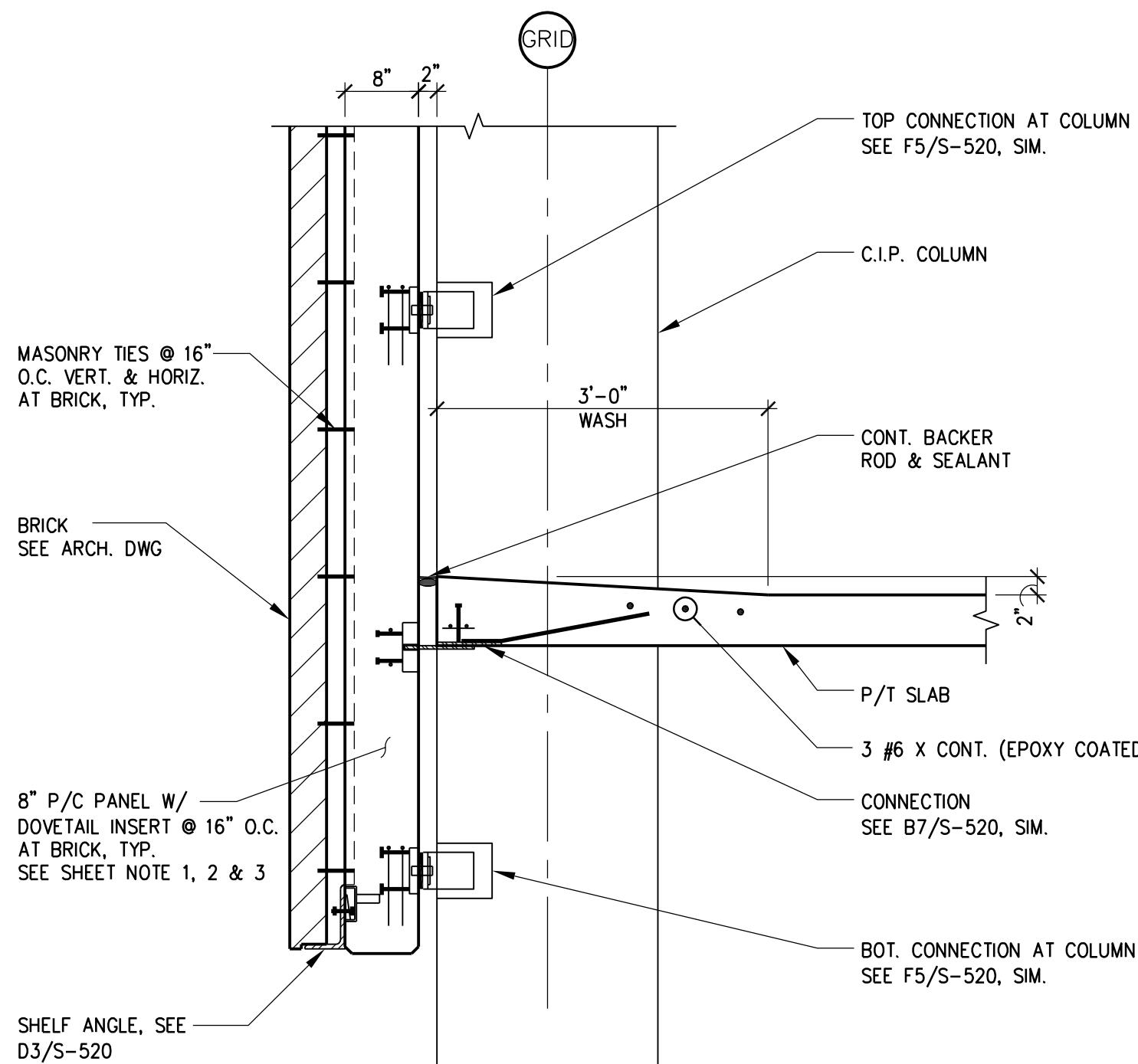
B3 P/C PANEL BEARING CONNECTION
PERFORMANCE DESIGN



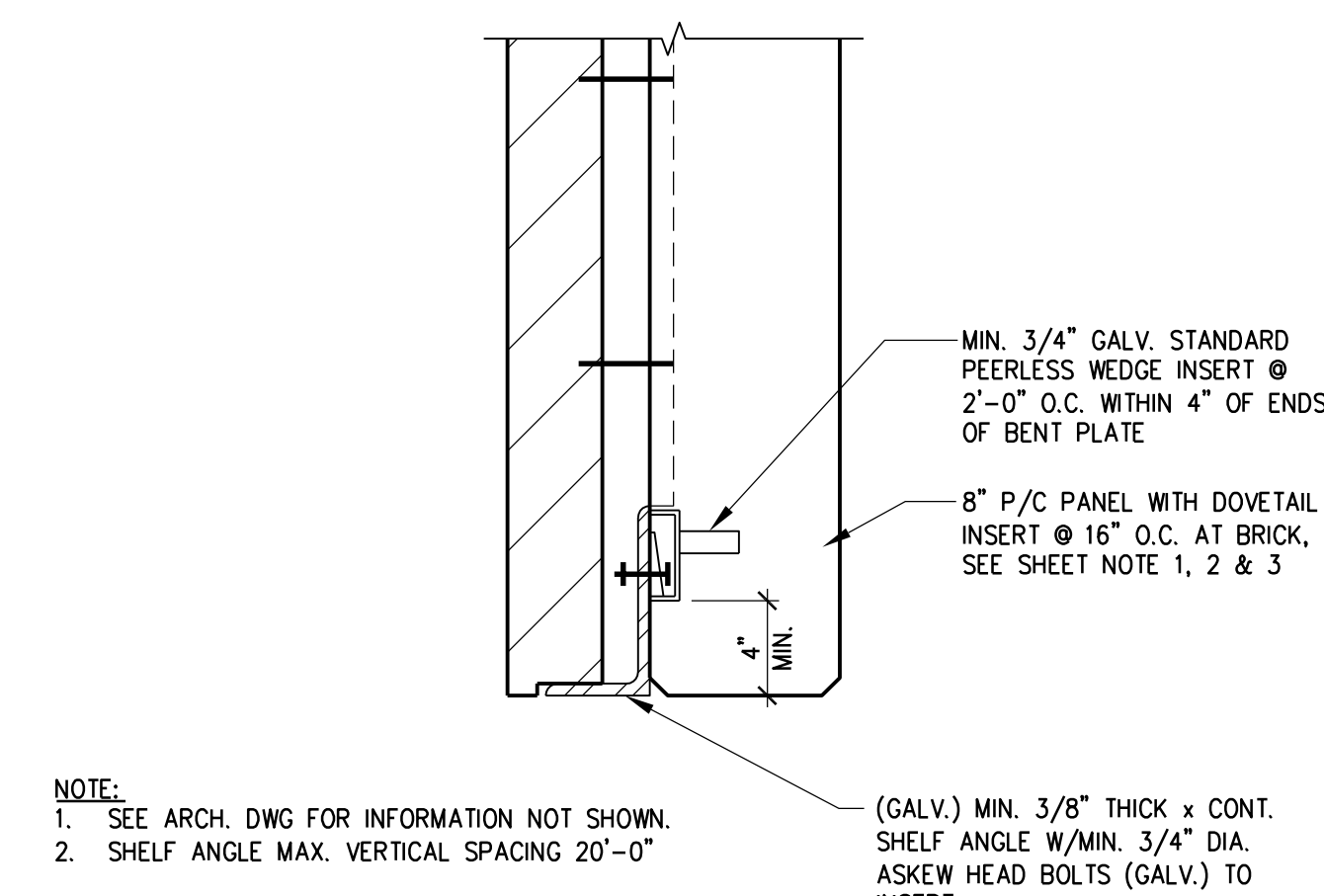
B5 EXTERIOR BUMPER WALL DETAIL



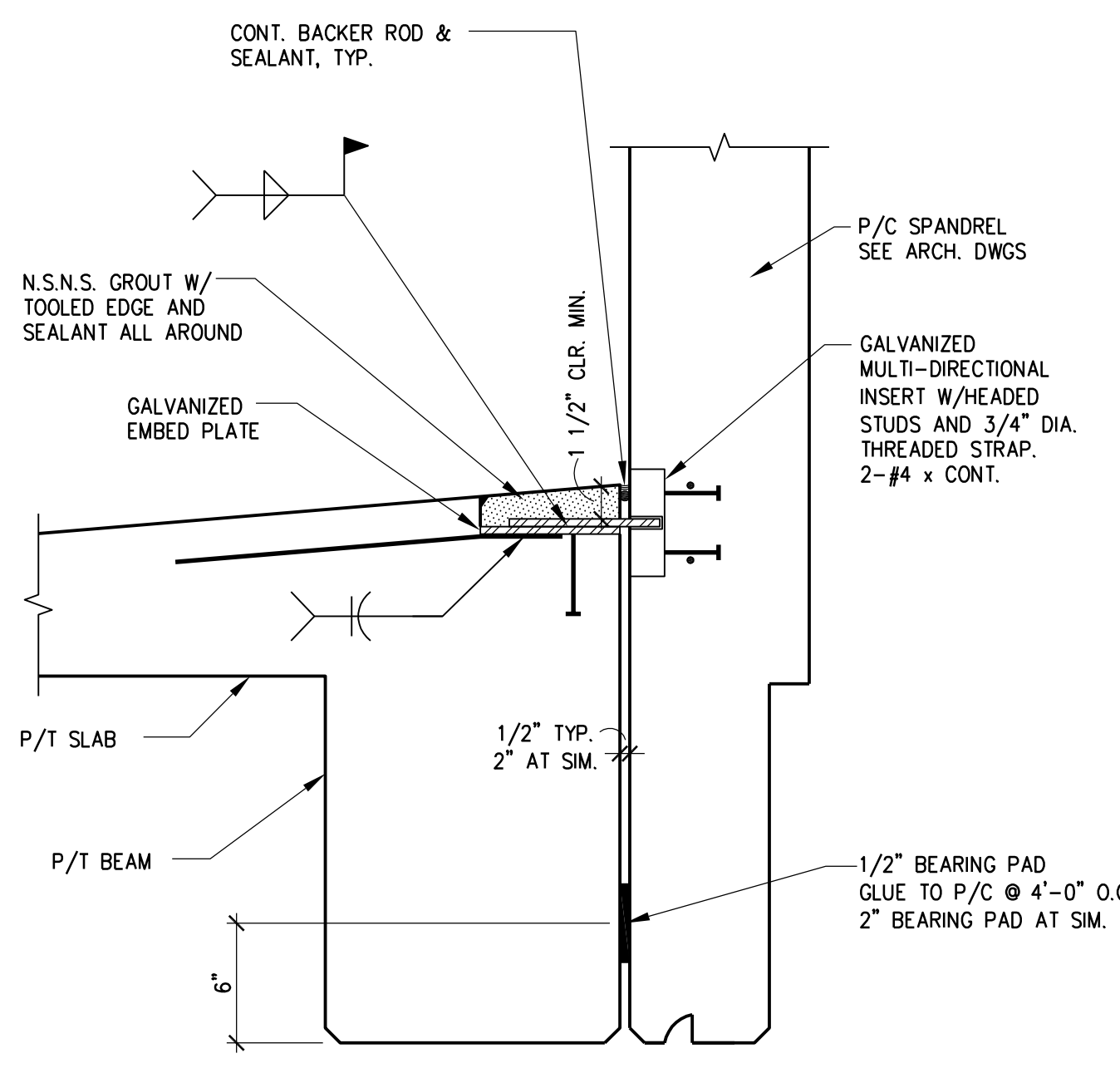
B7 P/C PANEL SLAB LATERAL CONNECTION
PERFORMANCE DESIGN (MAX. 4'-0" O.C.)



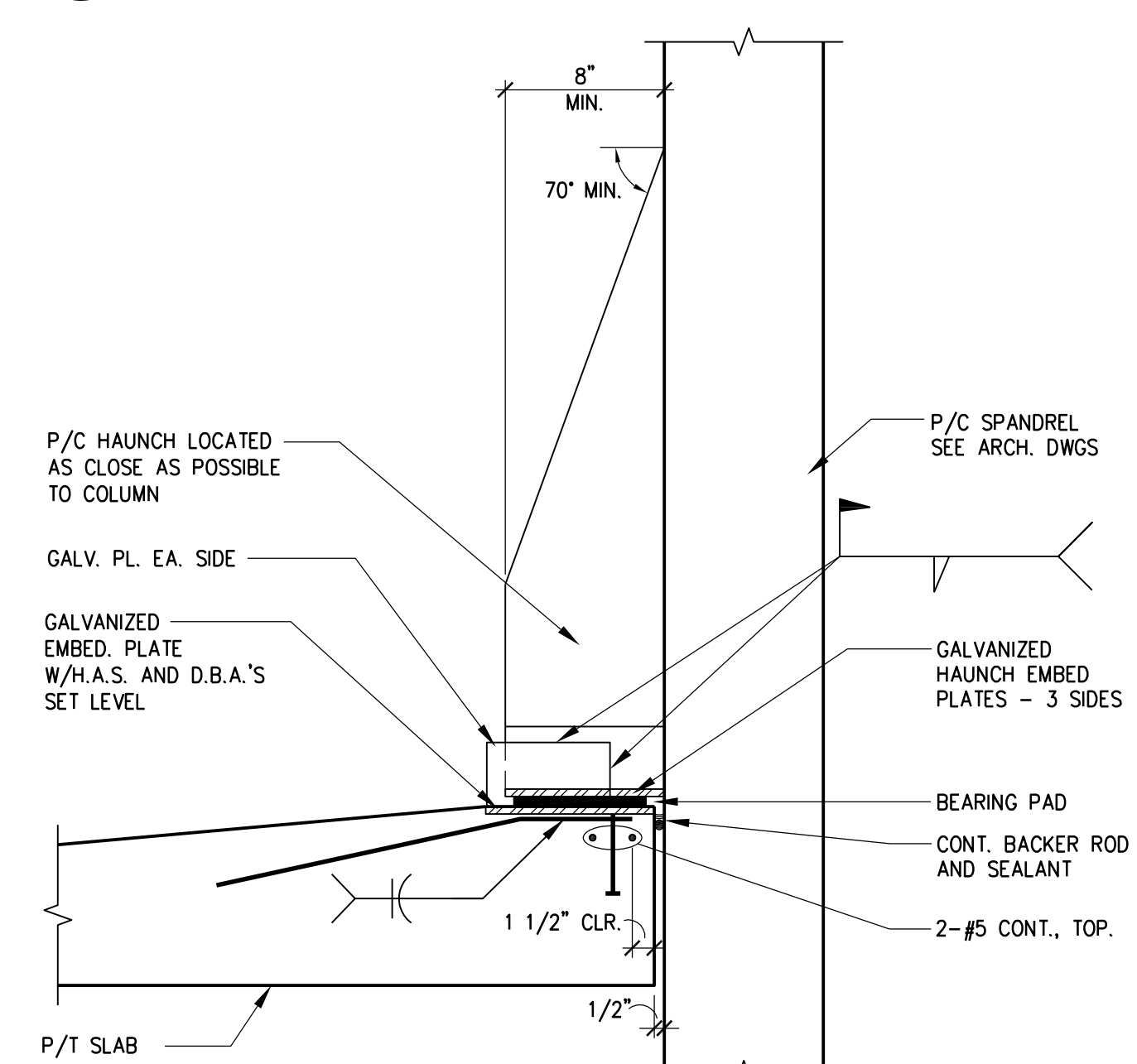
D1 SECTION



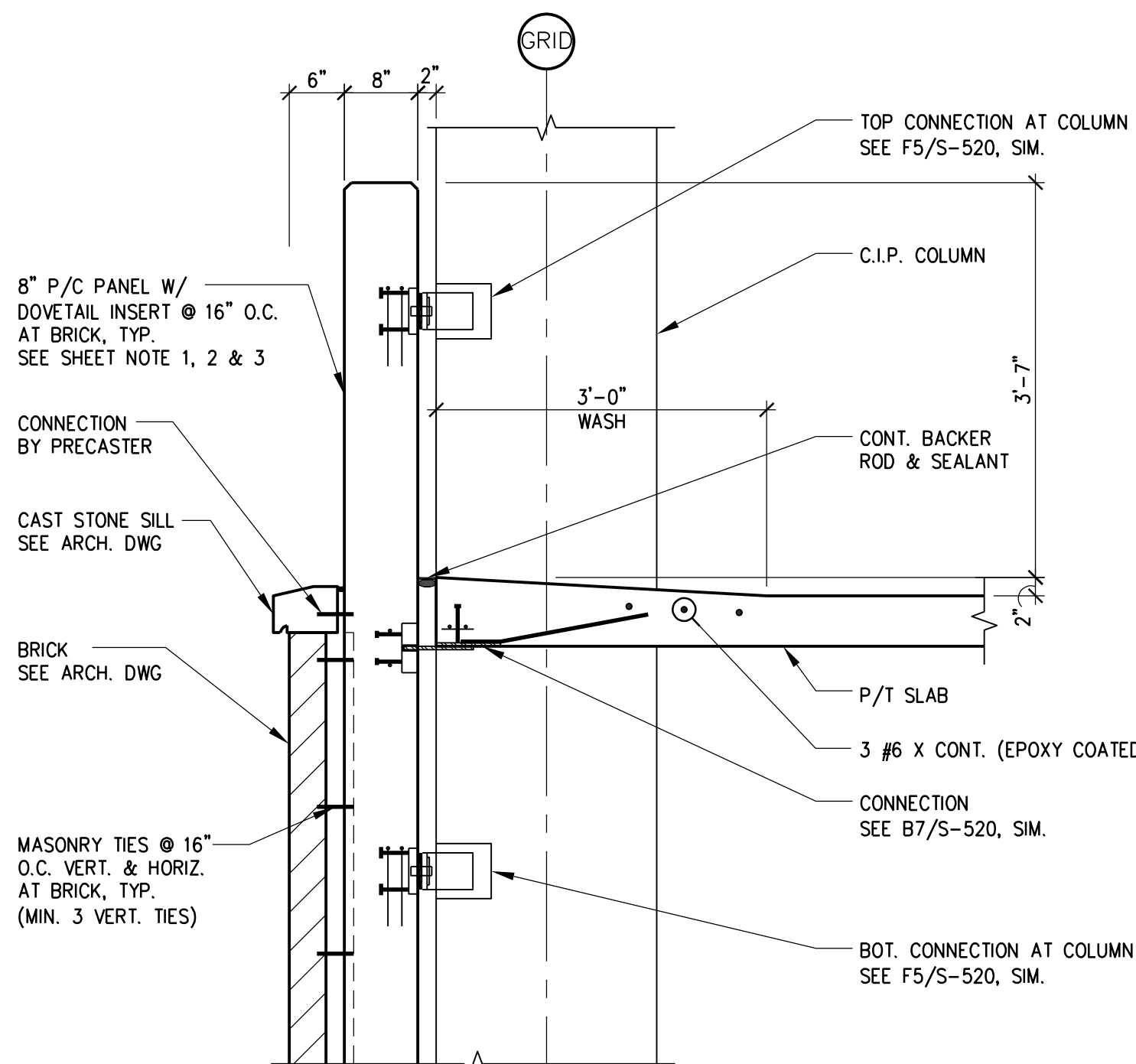
D3 SECTION
PERFORMANCE DESIGN



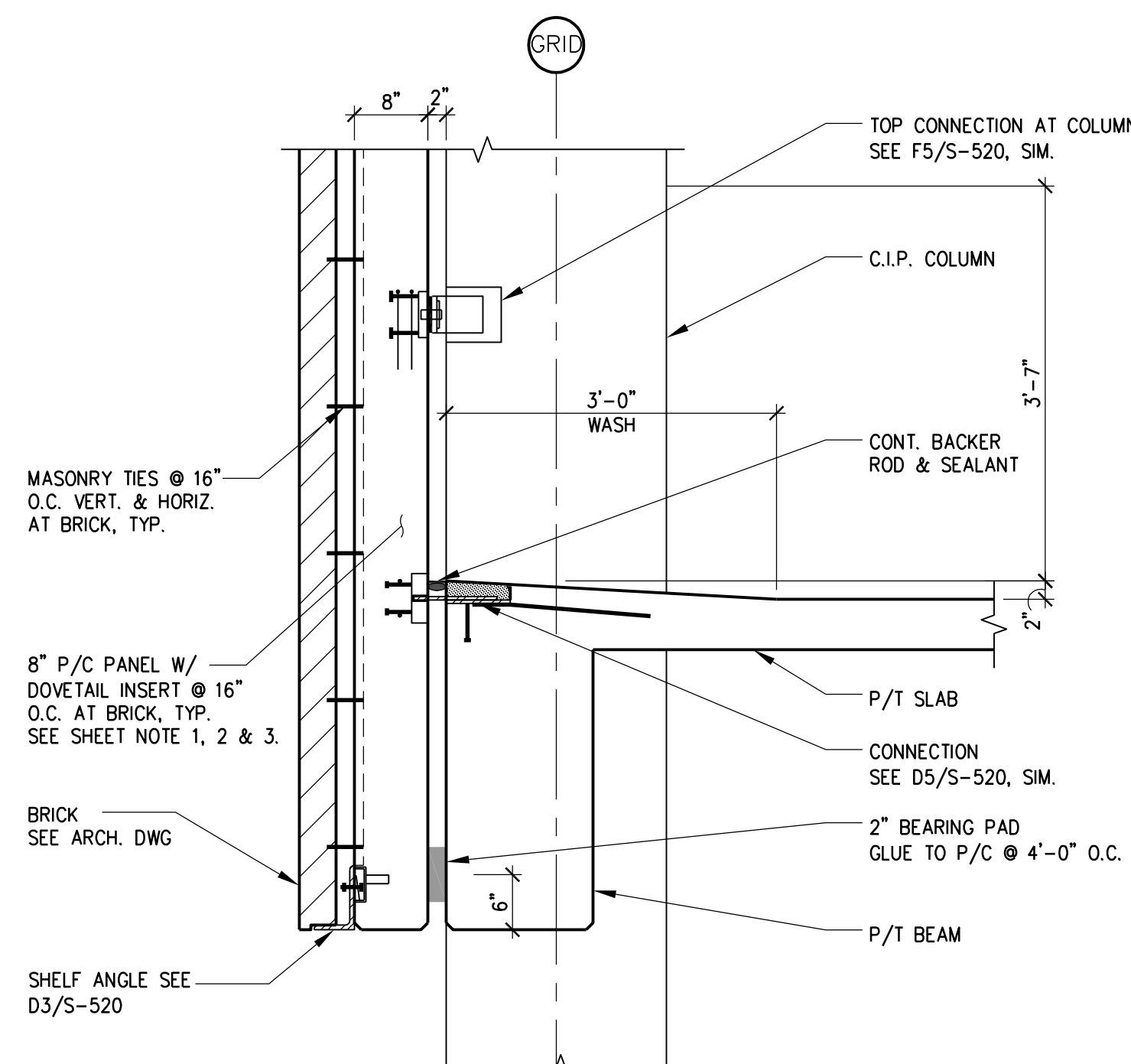
D5 SPANDREL/BEAM DETAIL
PERFORMANCE DESIGN (MAX. 4'-0" O.C.)



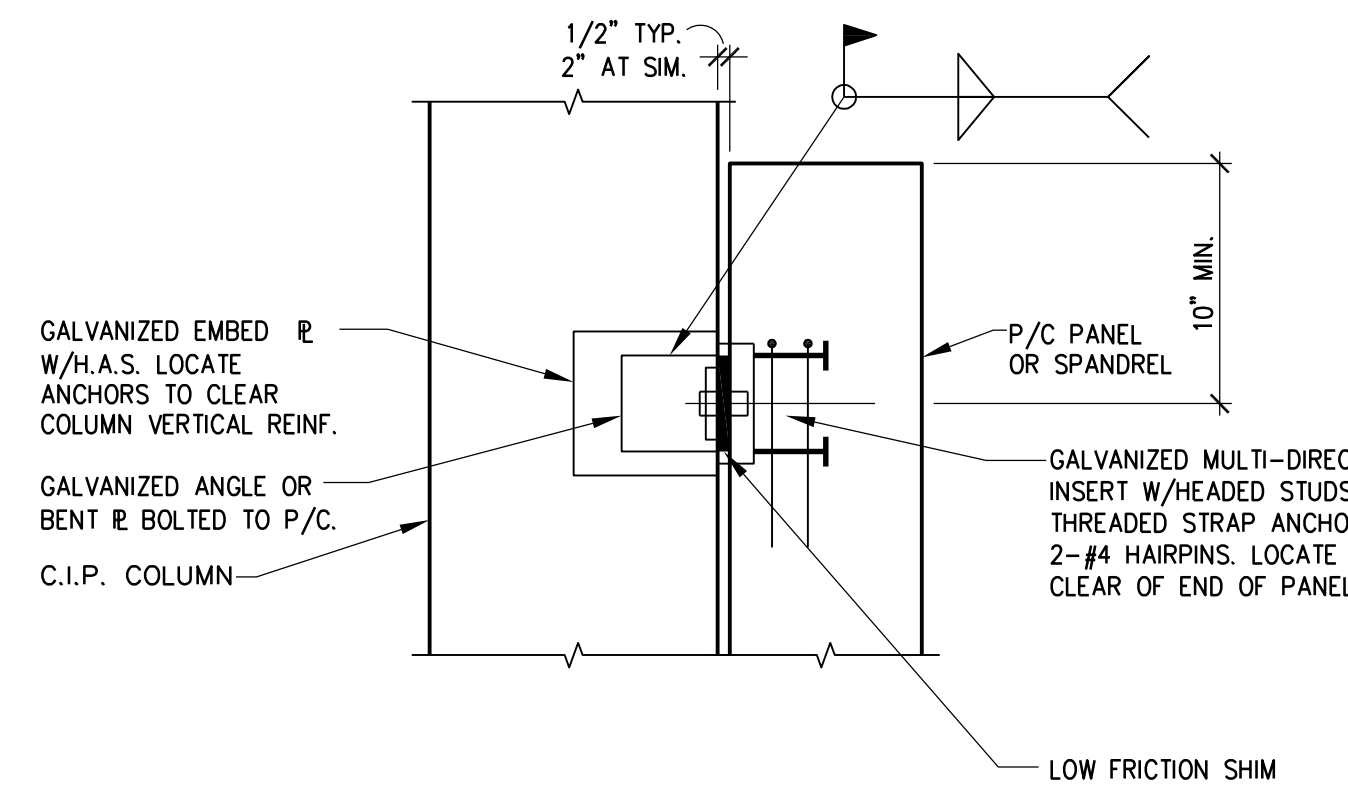
D7 P/C SPANDREL BEARING AND
LATERAL CONNECTION
PERFORMANCE DESIGN



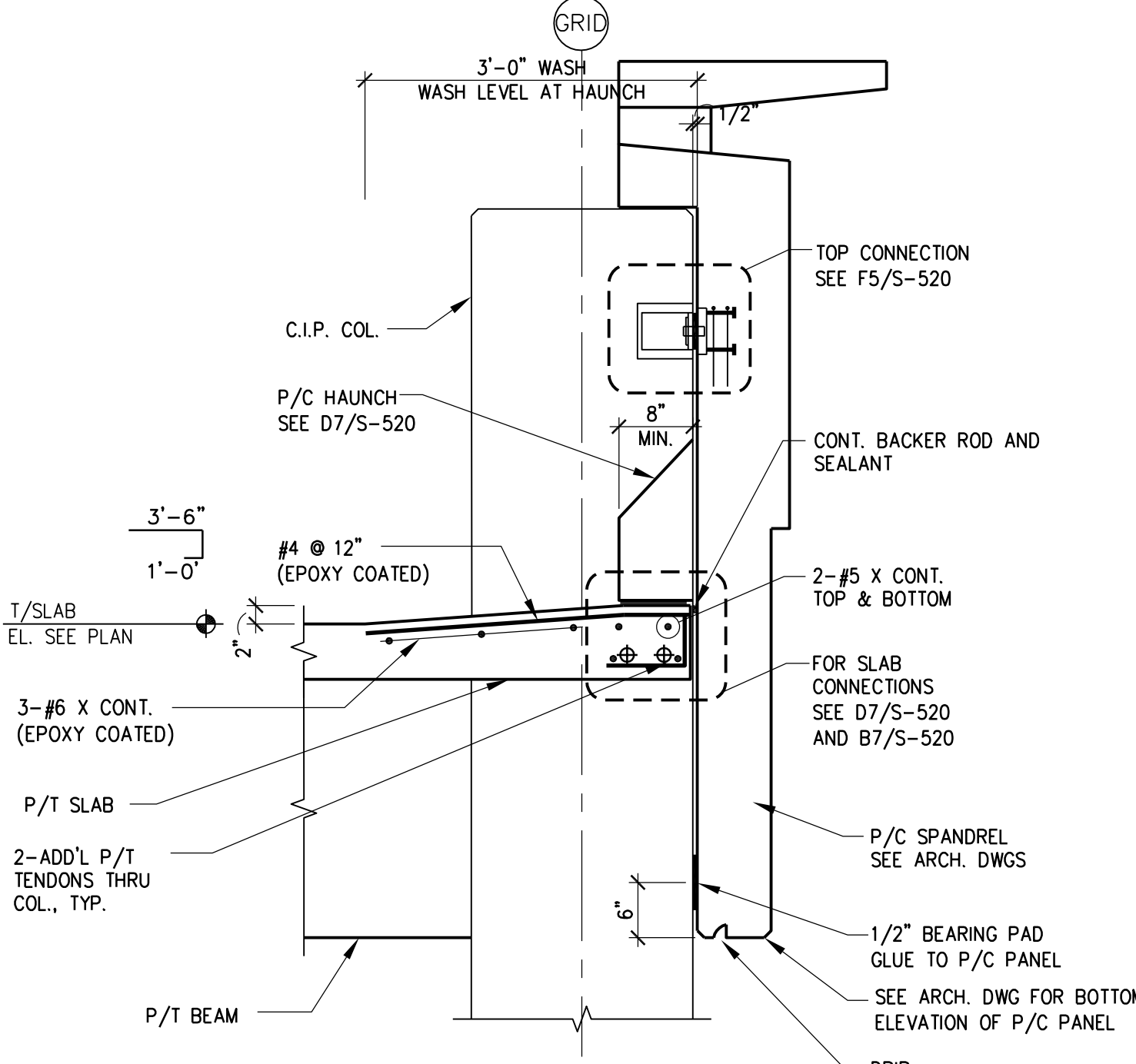
F1 SECTION



F3 SECTION



F5 P/C PANEL/SPANDREL
LATERAL CONNECTION
PERFORMANCE DESIGN



F7 SLAB/BEAM/SPANDREL DETAIL
PERFORMANCE DESIGN

- SHEET NOTES:**
1. TYPICALLY, PRECASTER SHALL DESIGN THE 8" P/C PANEL WITH BRICK AS THE FOLLOWINGS:
 - a. FOR LATERAL LOAD: THE 8" P/C PANEL IS TIED TO THE GARAGE DECK WITH THE MULTI-DIRECTIONAL INSERT. SEE DETAIL D3/S-520 AND B7/S-520.
 - b. AT OPENING, THE 8" P/C PANEL SHALL SUPPORT THE BRICK BY THE SHELF ANGLE. SEE DETAIL D3/S-520.
 - c. ALL THE GRAVITY LOADS INCLUDE THE 8" P/C PANEL SELF-WEIGHT AND BRICK ARE SUPPORTED BY THE FOUNDATION C.I.P. WALLS/GRADE BEAMS.
 2. LOCATE THE 8" P/C PANEL VERTICAL PIECE JOINT AT THE LOCATION OF BRICK EXPANSION JOINT. SEE DETAIL D5/S-522. DO NOT LOCATE THE 8" P/C PANEL VERTICAL PIECE JOINT OUTSIDE THE BRICK EXPANSION JOINT.
 3. AT BRICK EXPANSION JOINT WHERE THE 8" P/C PANEL IS CONTINUOUS, SEE DETAIL D7/S-522.
 4. THE NOTE "PERFORMANCE DESIGN" SHOWN ON SECTION/DETAIL INDICATES THE INTENT OF CONNECTION DESIGN. PRECASTER SHALL FOLLOW THE DESIGN INTENT TO DESIGN THE CONNECTION.

Revisions:	Date
100% REVIEW SUBMISSION (NOT FOR CONSTRUCTION)	06/10/11
75% REVIEW SUBMISSION (NOT FOR CONSTRUCTION)	04/11/11
75% REVIEW SUBMISSION (NOT FOR CONSTRUCTION) - COST ESTIMATE	02/03/11
65% REVIEW SUBMISSION (NOT FOR CONSTRUCTION)	01/19/11
Revisions:	11/22/10

CONSULTANTS/ENGINEERS:	
KJMW ENGINEERING CONSULTANTS Mechanical/Electrical/Plumbing Engineer	TERRACON Geotechnical Engineer
623 26TH AVENUE ROCK ISLAND, ILLINOIS 61201 309.788.0673 Telephone 309.786-5967 Fax	2640 12TH STREET SW CEDAR RAPIDS, IOWA 52404 319.366.8321 Telephone 319.366.0032 Fax

GRAEF Civil Engineer/Landscape Architect	WALKER PARKING CONSULTANTS Structural Engineer
332 SOUTH MICHIGAN, SUITE 1400 CHICAGO, ILLINOIS 60604-4367 312.582.2020 Telephone 312.939.7014 Fax	505 DAVIS ROAD ELGIN, ILLINOIS 60123 847.697.2640 Telephone 847.697.7439 Fax

FAITHFUL+GOULD Cost Management	ARCHITECT: Loebl Schlossman & Hackl Architecture • Planning • Interiors
222 SOUTH RIVERSIDE PLAZA, SUITE 2240 CHICAGO, ILLINOIS 60606 312.612.6319 Telephone 312.655.9037 Fax	233 North Michigan Avenue Suite 3000 Chicago, Illinois 60601 312.565.1800 Telephone 312.565.5912 Facsimile www.lshdesign.com

ARCHITECT:	
Loebl Schlossman & Hackl Architecture • Planning • Interiors	233 North Michigan Avenue Suite 3000 Chicago, Illinois 60601 312.565.1800 Telephone 312.565.5912 Facsimile www.lshdesign.com

ARCHITECT:	
Loebl Schlossman & Hackl Architecture • Planning • Interiors	233 North Michigan Avenue Suite 3000 Chicago, Illinois 60601 312.565.1800 Telephone 312.565.5912 Facsimile www.lshdesign.com

ARCHITECT:	
Loebl Schlossman & Hackl Architecture • Planning • Interiors	233 North Michigan Avenue Suite 3000 Chicago, Illinois 60601 312.565.1800 Telephone 312.565.5912 Facsimile www.lshdesign.com

ARCHITECT:	
Loebl Schlossman & Hackl Architecture • Planning • Interiors	233 North Michigan Avenue Suite 3000 Chicago, Illinois 60601 312.565.1800 Telephone 312.565.5912 Facsimile www.lshdesign.com

ARCHITECT:	
Loebl Schlossman & Hackl Architecture • Planning • Interiors	233 North Michigan Avenue Suite 3000 Chicago, Illinois 60601 312.565.1800 Telephone 312.565.5912 Facsimile www.lshdesign.com

ARCHITECT:	
Loebl Schlossman & Hackl Architecture • Planning • Interiors	233 North Michigan Avenue Suite 3000 Chicago, Illinois 60601 312.565.1800 Telephone 312.565.5912 Facsimile www.lshdesign.com