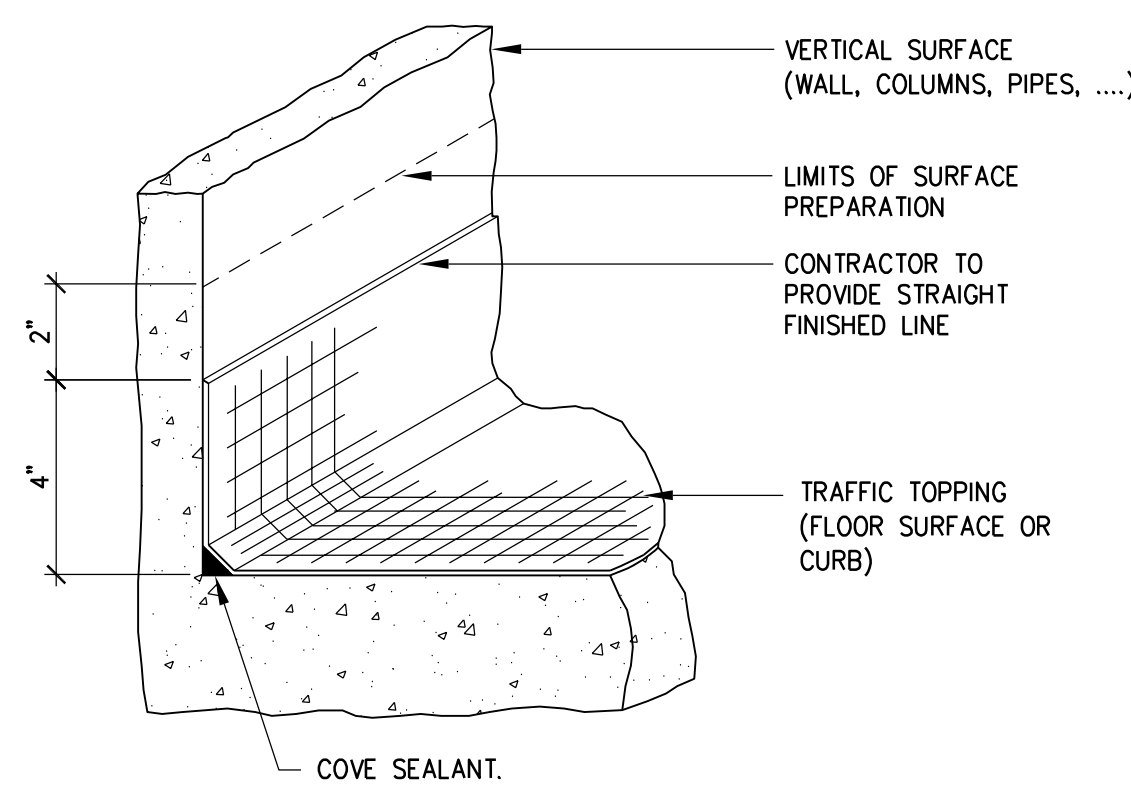


NOTE:
1. SEE SHEET S-103, SHEET NOTE 17 FOR TYP.
SLAB P/T TENDON ORDINATE NOT SHOWN.

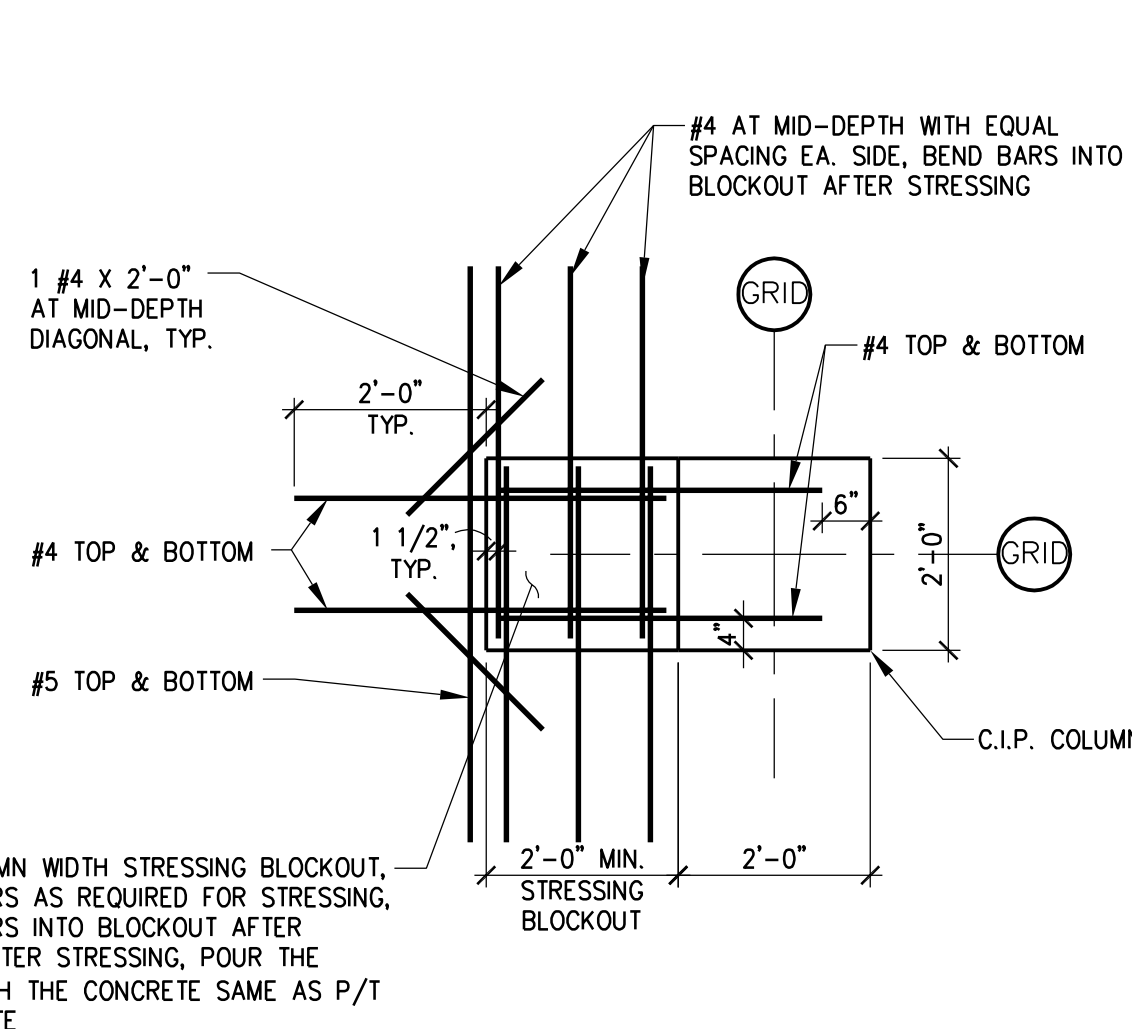
B1 SLAB P/T TENDON ORDINATE



ISOMETRIC

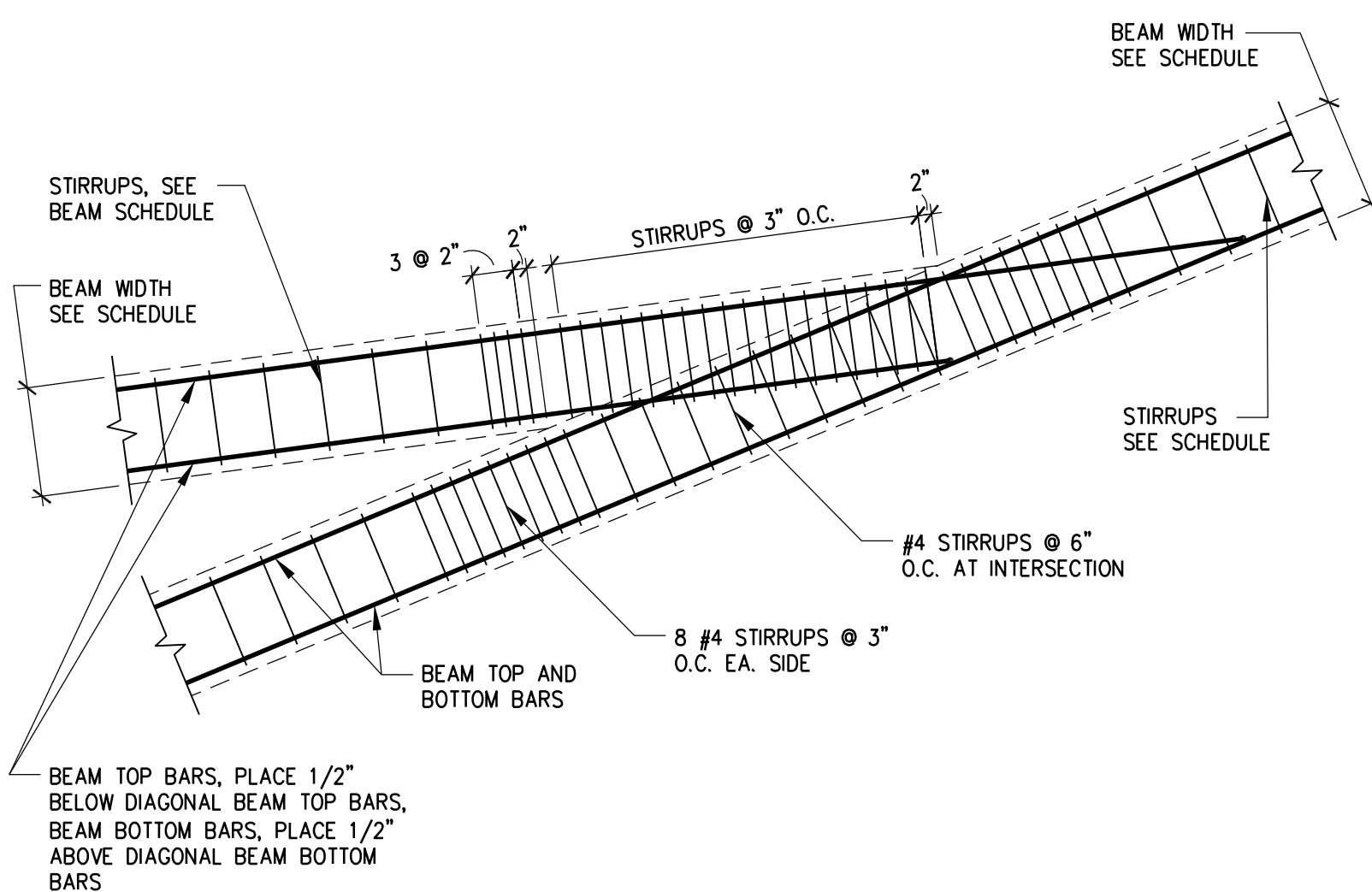
NOTE:
1. TRAFFIC BEARING WATERPROOF MEMBRANE SHALL BE APPLIED OVER ALL POURSTRIPS AND INHABITED AREAS, INCLUDING ELECTRICAL AND MECHANICAL EQUIPMENT ROOMS. CONTRACTOR NOTE: CONTRARY TO THE CONCRETE FINISHES SPECIFIED ELSEWHERE, THOSE AREAS WHICH RECEIVE A TRAFFIC BEARING MEMBRANE SHALL HAVE A LIGHT BROOM FINISH. CONTRACTOR SHALL VERIFY THAT THE CONCRETE FINISH IS COMPATIBLE WITH THAT RECOMMENDED BY THE MEMBRANE SUPPLIER AND INSTALLER.

D1 TRAFFIC TOPPING

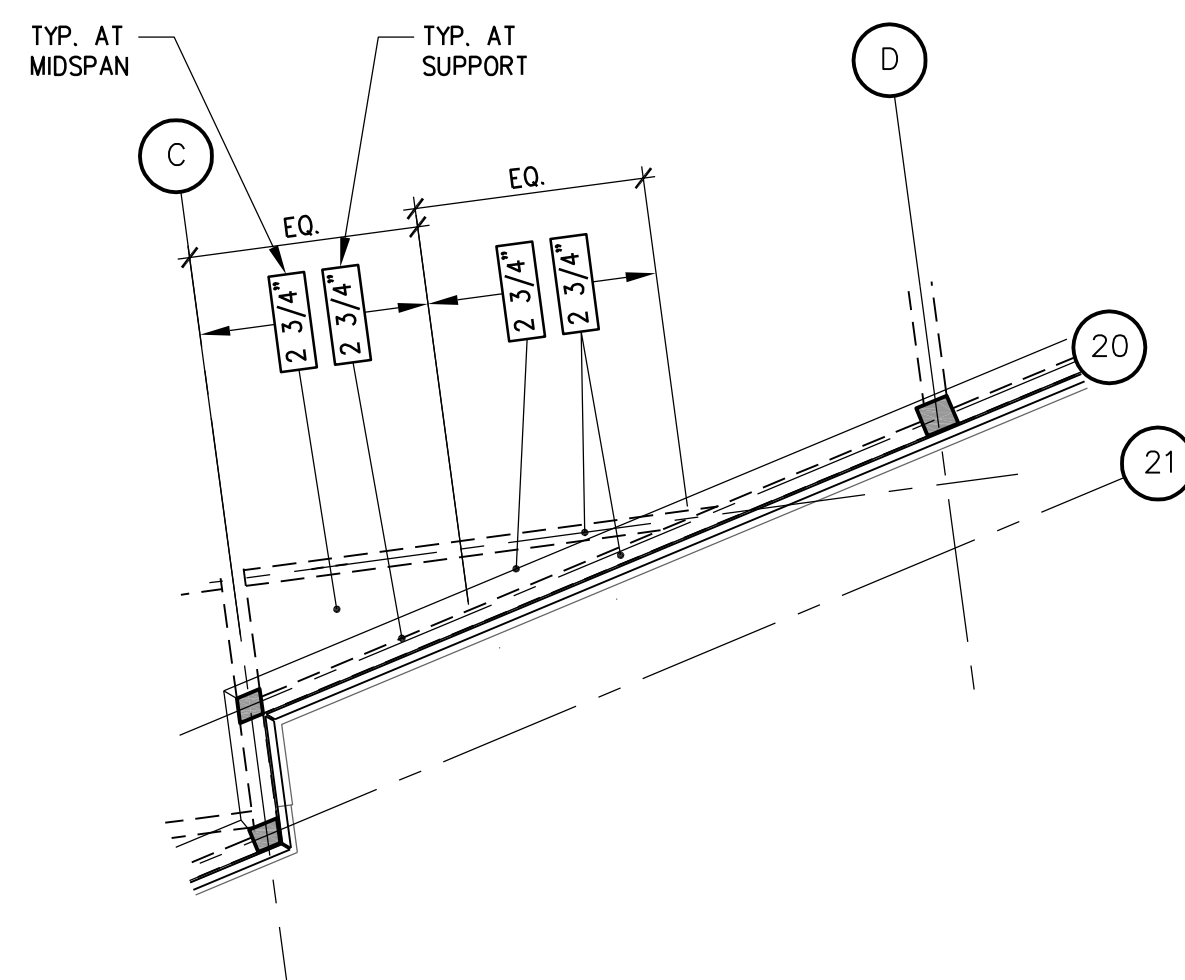


NOTE:
1. C.C. TO COORDINATE WITH P/T SHOP DRAWING FOR THE SIZE OF STRESSING BLOCKOUT.

F1 STRESSING BLOCKOUT DETAIL

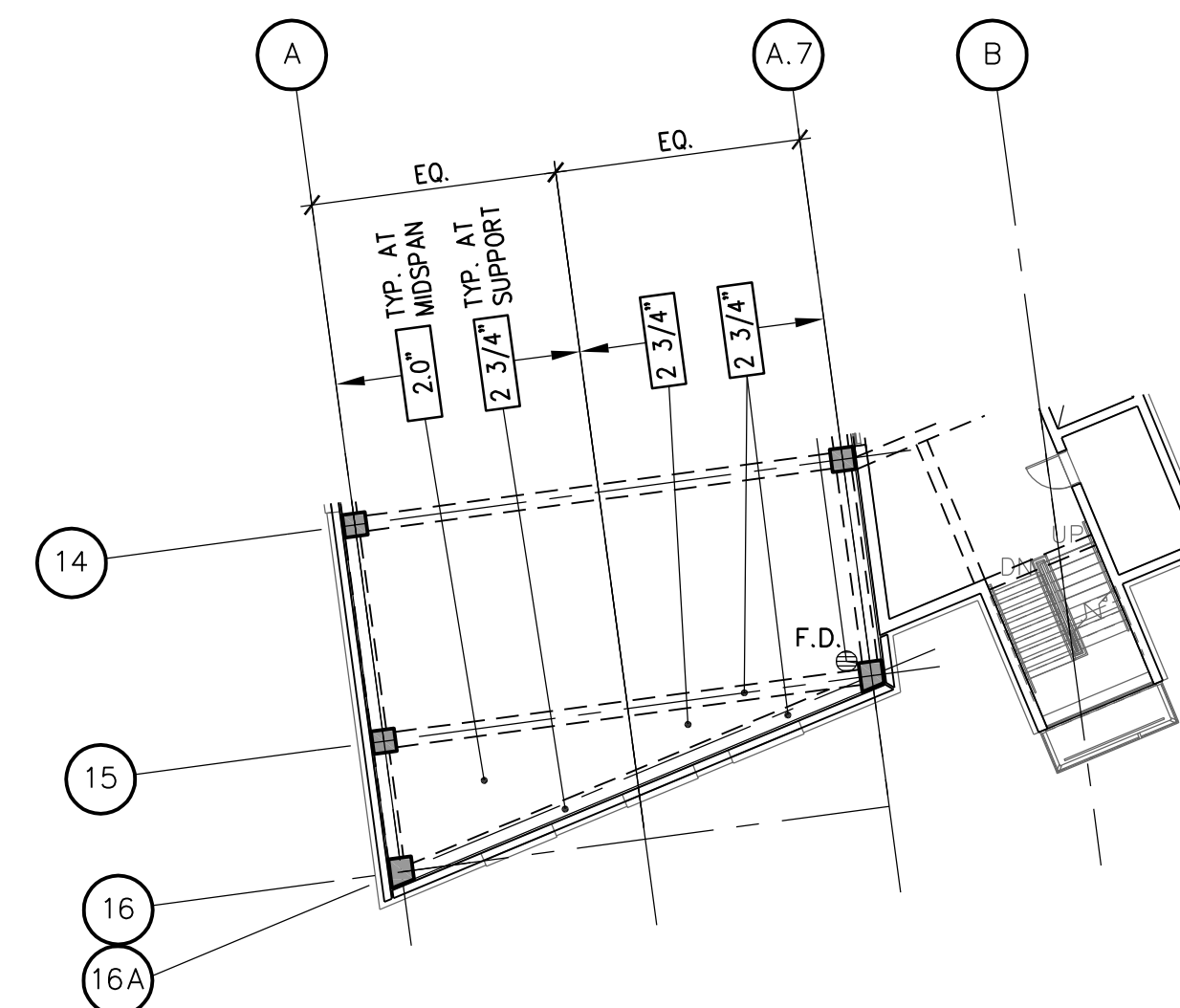


F3 PLAN DETAIL



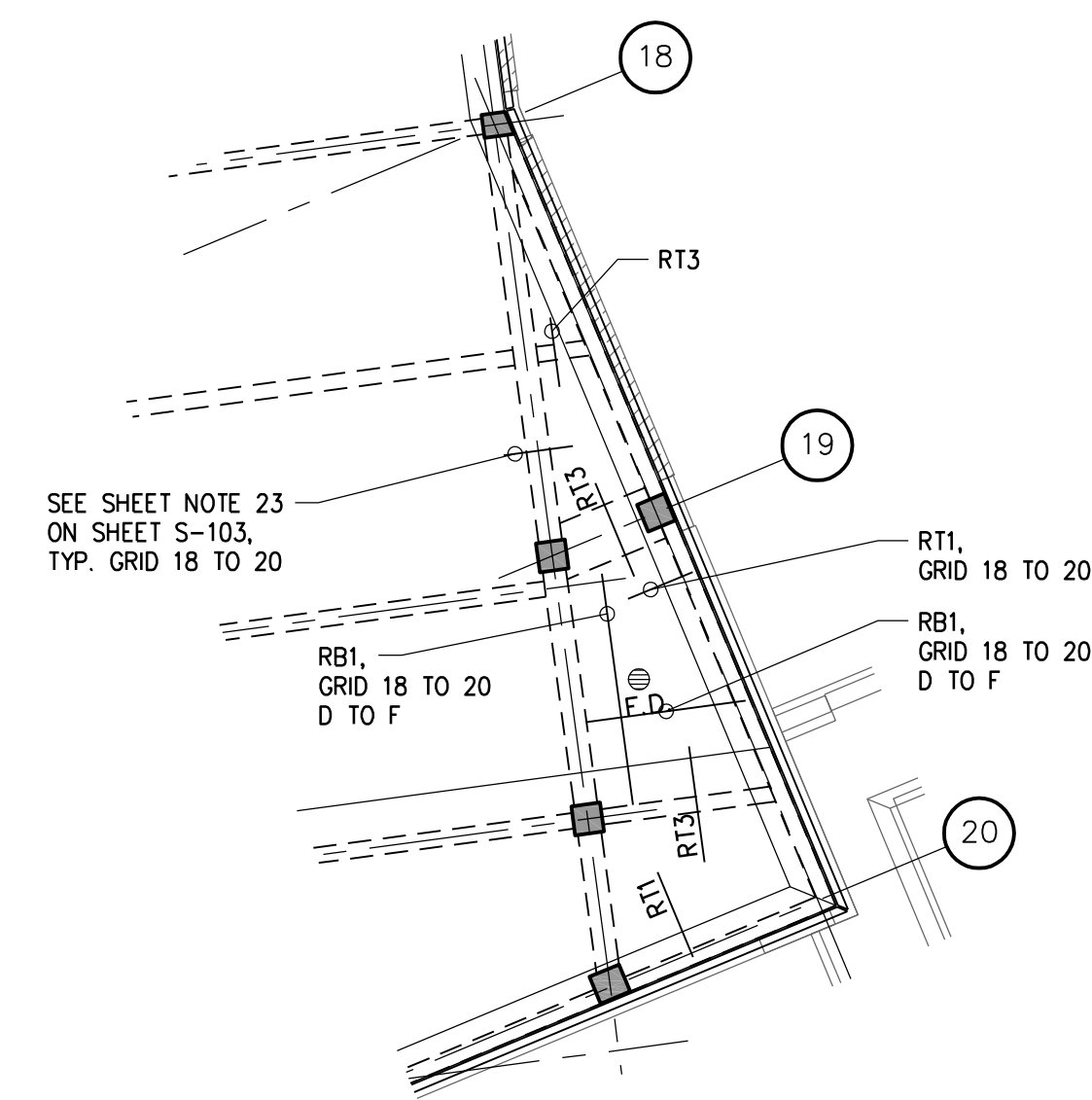
NOTE:
1. SEE SHEET S-103, SHEET NOTE 17 FOR TYP.
SLAB P/T TENDON ORDINATE NOT SHOWN.

B5 SLAB P/T TENDON ORDINATE

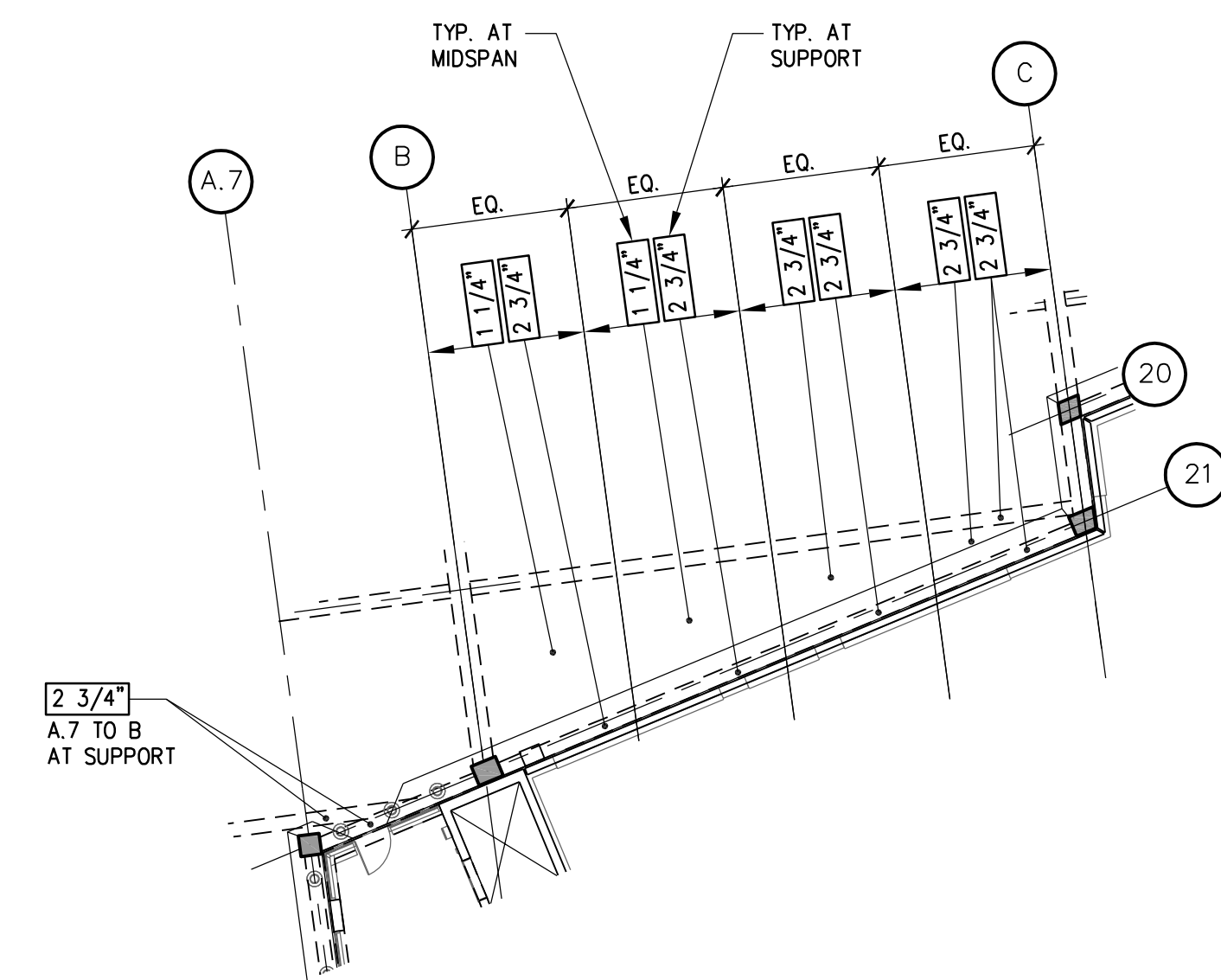


NOTE:
1. SEE SHEET S-103, SHEET NOTE 17 FOR TYP.
SLAB P/T TENDON ORDINATE NOT SHOWN.

D5 SLAB P/T TENDON ORDINATE

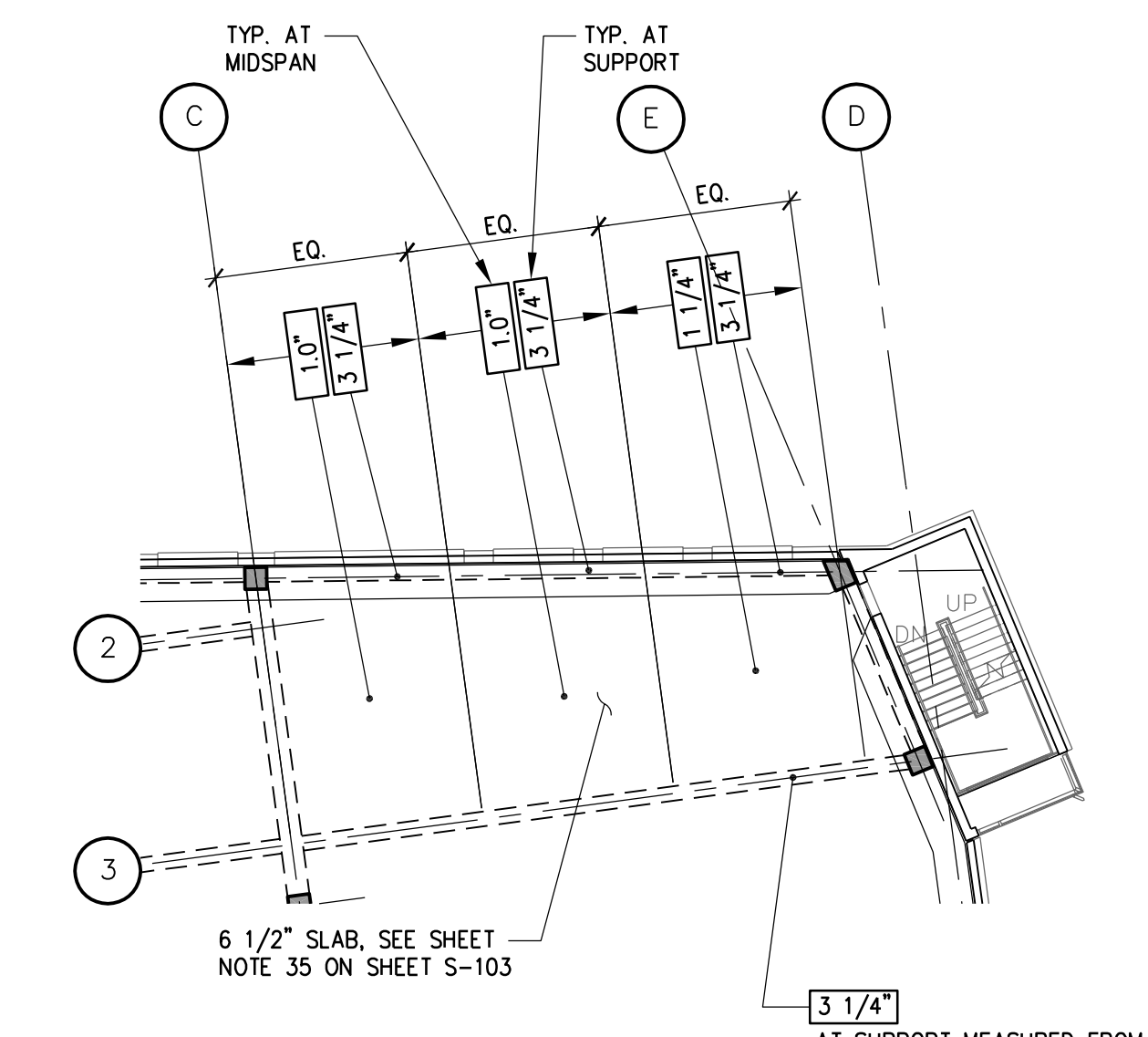


F5 SLAB REINF. PLAN



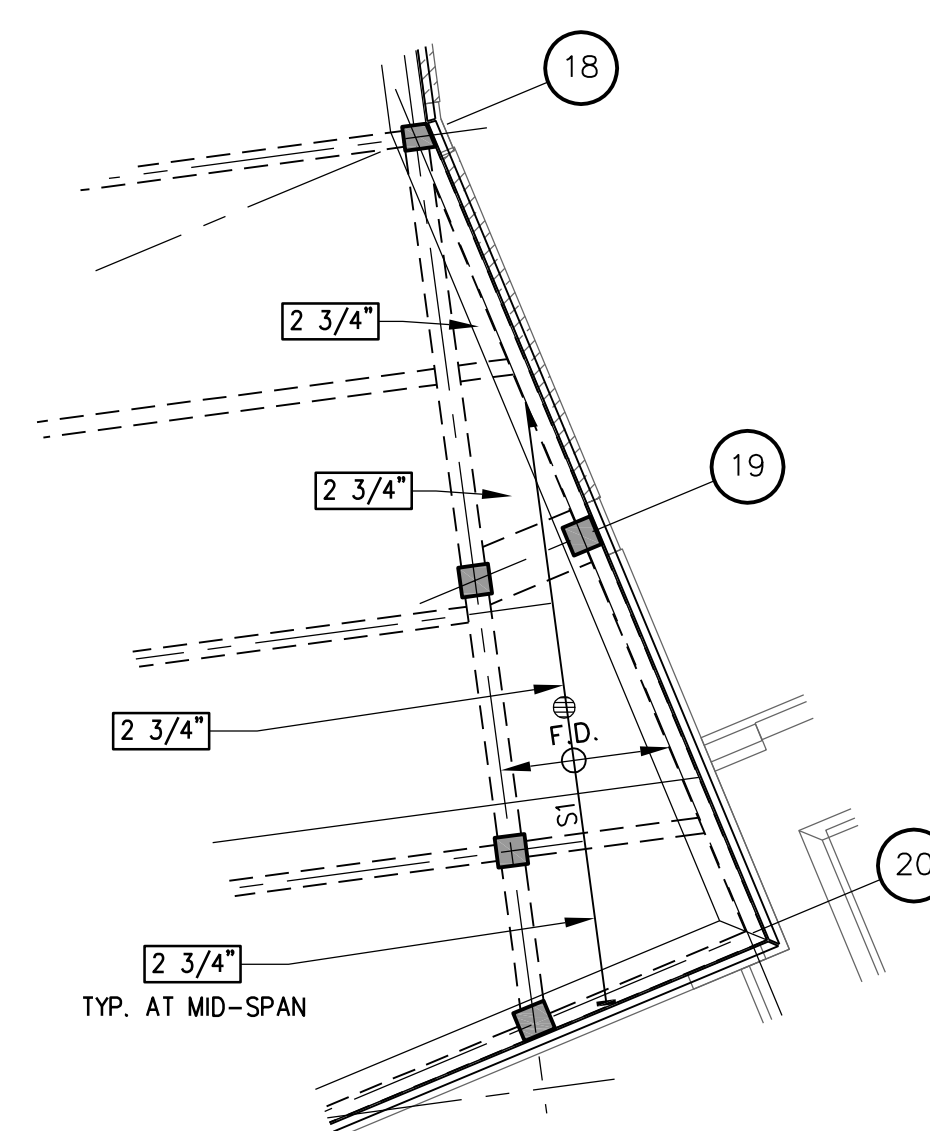
NOTE:
1. SEE SHEET S-103, SHEET NOTE 17 FOR TYP.
SLAB P/T TENDON ORDINATE NOT SHOWN.

B7 SLAB P/T TENDON ORDINATE



NOTE:
1. SEE SHEET S-103, SHEET NOTE 17 FOR TYP.
SLAB P/T TENDON ORDINATE NOT SHOWN.

D7 SLAB P/T TENDON ORDINATE



NOTE:
1. SEE SHEET S-103, SHEET NOTE 17 FOR TYP.
SLAB P/T TENDON ORDINATE NOT SHOWN.

F7 SLAB P/T TENDON ORDINATE

		CONSULTANTS/ENGINEERS:				ARCHITECT:		Drawing Title		Project Title		Project Number		Office of Construction and Facilities Management			
		KJWW ENGINEERING CONSULTANTS Mechanical/Electrical/Plumbing Engineer		TERRACON Geotechnical Engineer		GRAF Civil Engineer/Landscape Architect		WALKER PARKING CONSULTANTS Structural Engineer		FAITHFUL + GOULD Cost Management		636-402					
		6/6/10/11 623 26TH AVENUE ROCK ISLAND, ILLINOIS 61201 319.366.8321 Telephone 309.786-5967 Fax		2640 12TH STREET SW CEDAR RAPIDS, IOWA 52404 319.366.8321 Telephone 319.366.0032 Fax		332 SOUTH MICHIGAN, SUITE 1400 CHICAGO, ILLINOIS 60604-4367 312.682.7019 Telephone 312.939.7014 Fax		505 DAVIS ROAD ELGIN, ILLINOIS 60123 847.697.2640 Telephone 847.697.7439 Fax		222 SOUTH RIVERSIDE PLAZA, SUITE 2240 CHICAGO, ILLINOIS 60606 312.682.7019 Telephone 312.655.9037 Fax		233 North Michigan Avenue Suite 3000 Chicago, Illinois 60601				Building Number 43	
		100% REVIEW SUBMISSION (NOT FOR CONSTRUCTION)		1/1/11		2/20/11		1/19/11		11/22/10		3/1/11				Drawing Number S-511	
		75% REVIEW SUBMISSION (NOT FOR CONSTRUCTION)		2/20/11		1/19/11		11/22/10		3/1/11		3/1/11				Dwg. 106 of 152	
		75% REVIEW SUBMISSION (NOT FOR CONSTRUCTION) - COST ESTIMATE		1/19/11		11/22/10		3/1/11		3/1/11		3/1/11					
		35% REVIEW SUBMISSION (NOT FOR CONSTRUCTION)		11/22/10		3/1/11		3/1/11		3/1/11		3/1/11					
		Revisions:		Date		Date		Date		Date		Date					