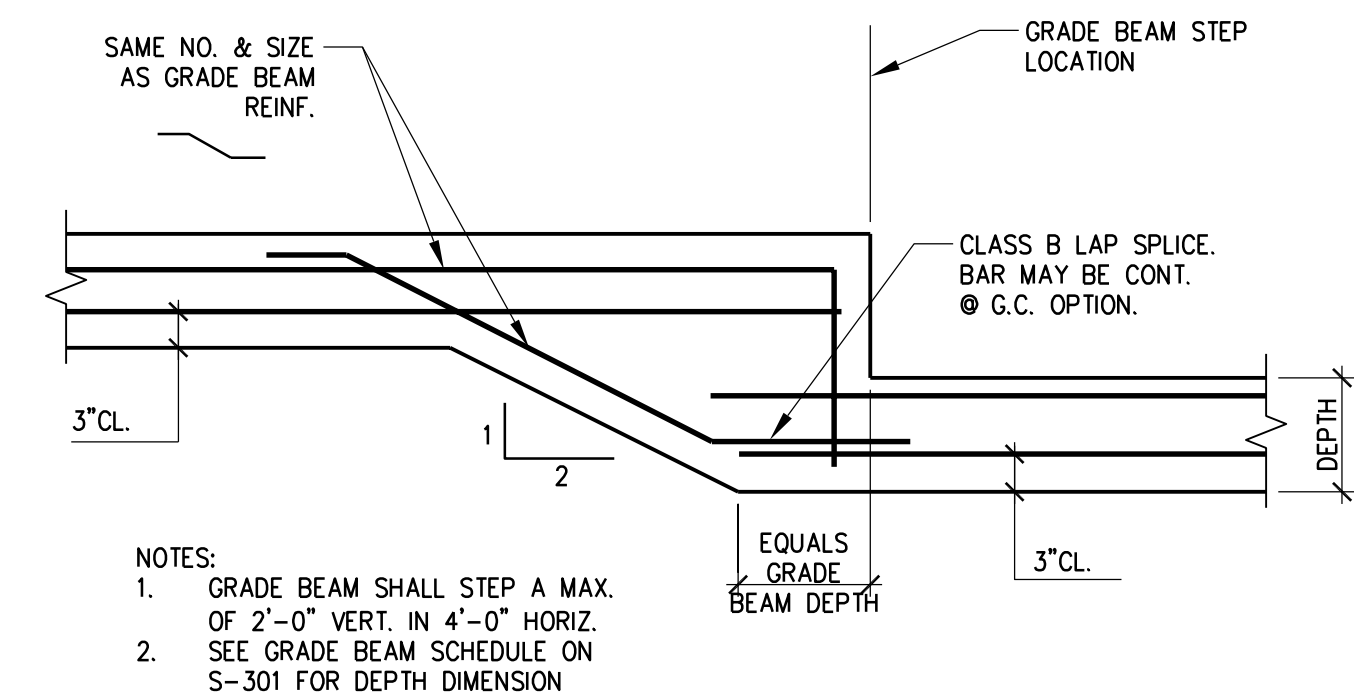
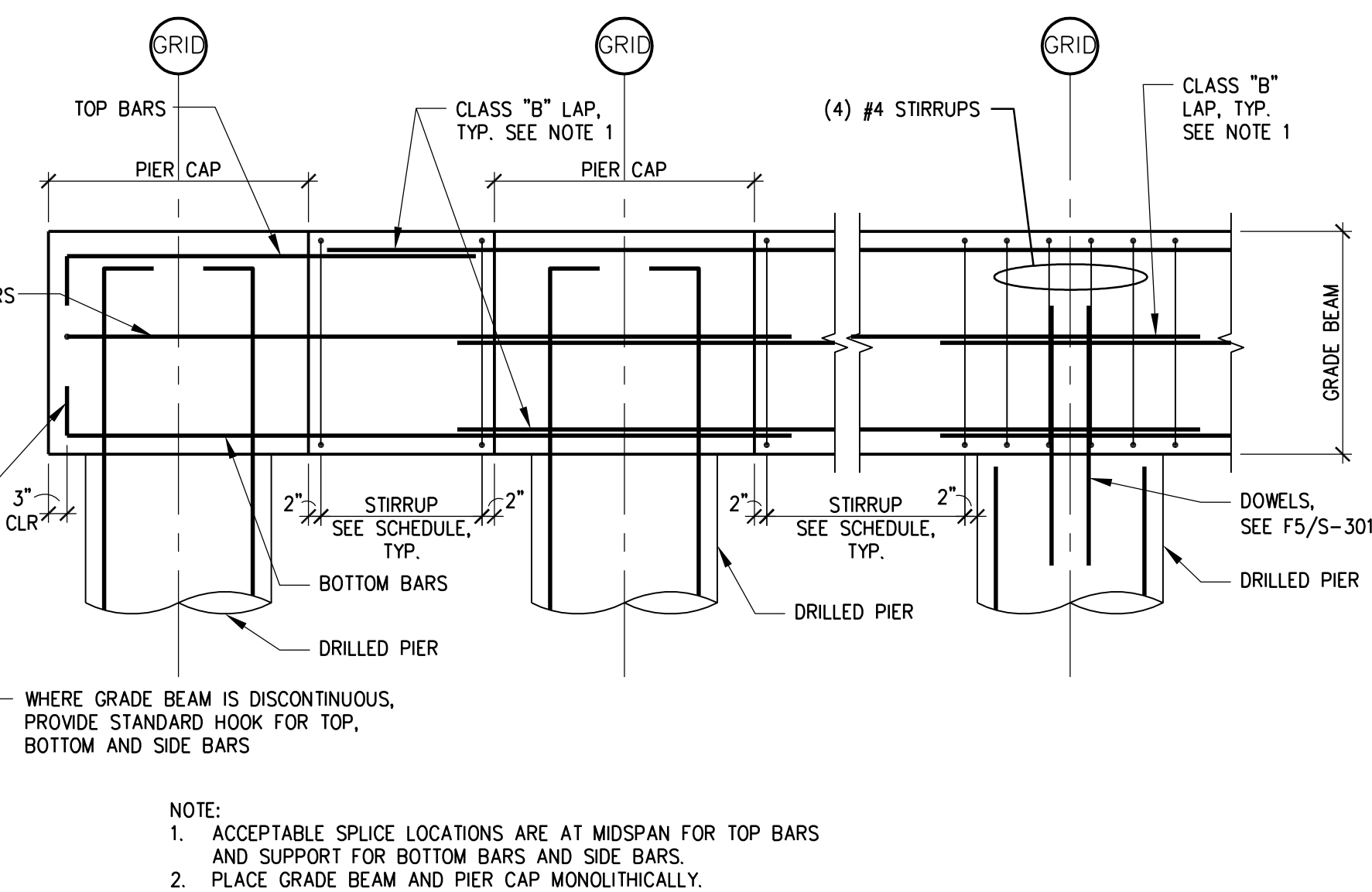


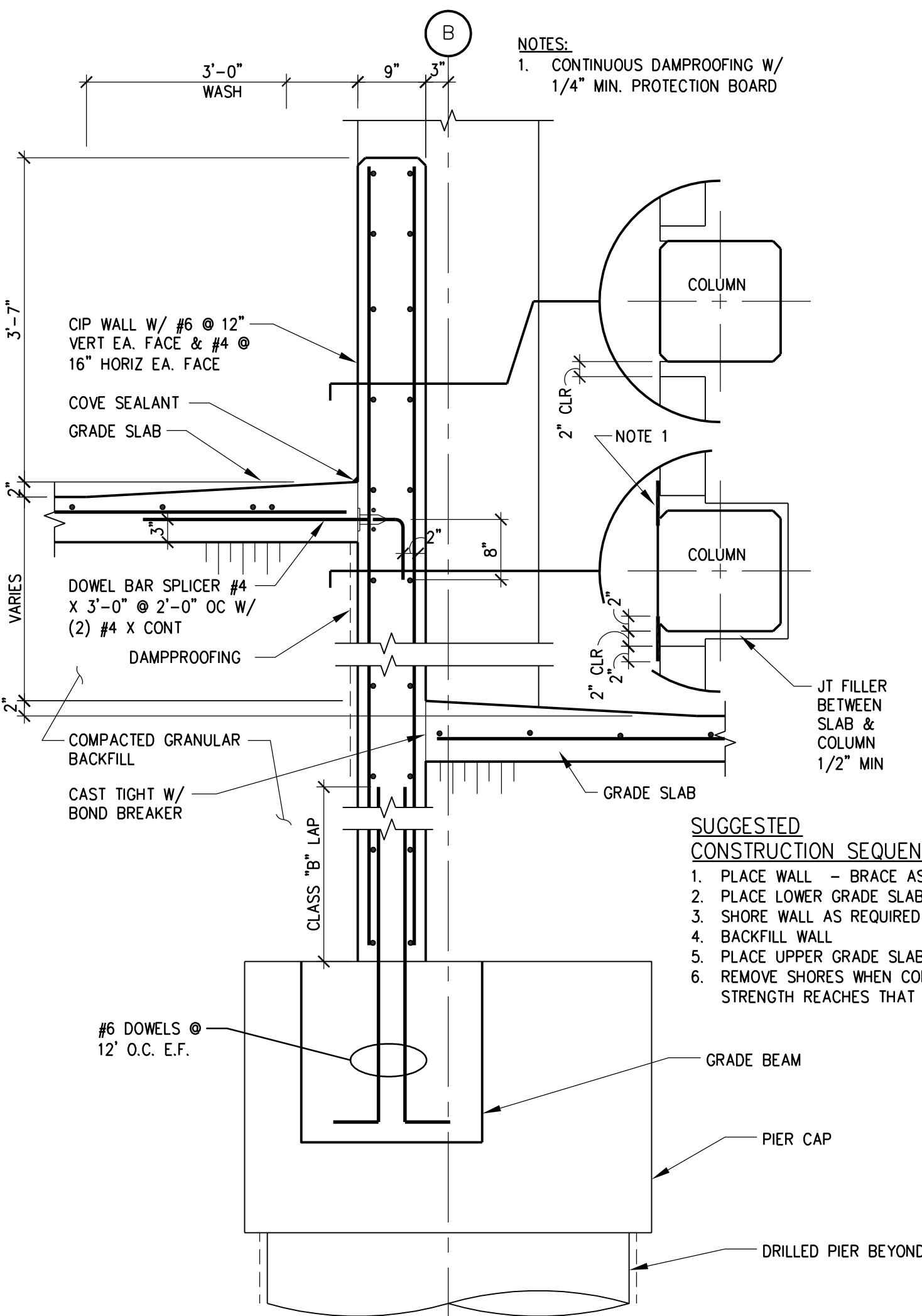
B1 P/T BEAM/WALL/SLAB DETAIL



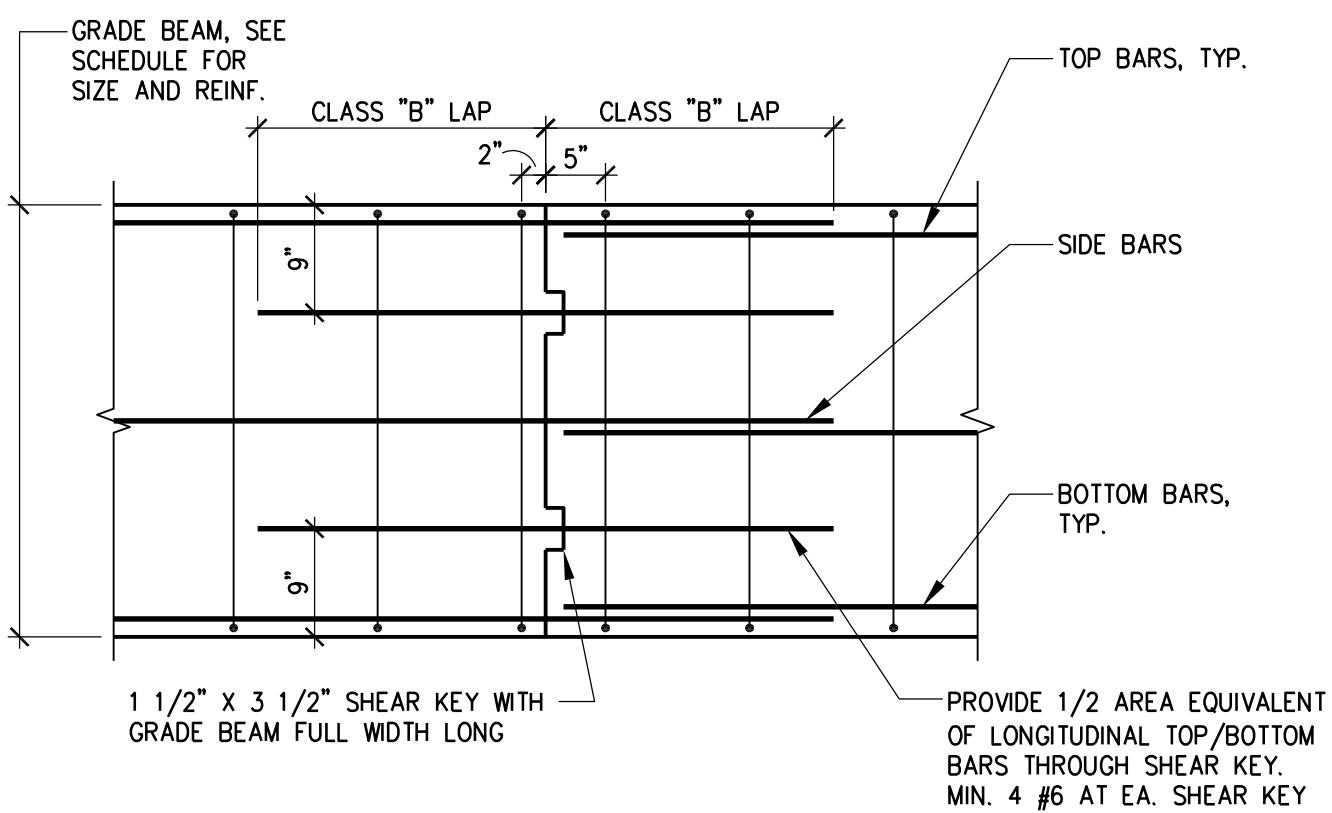
D1 GRADE BEAM STEP DETAIL



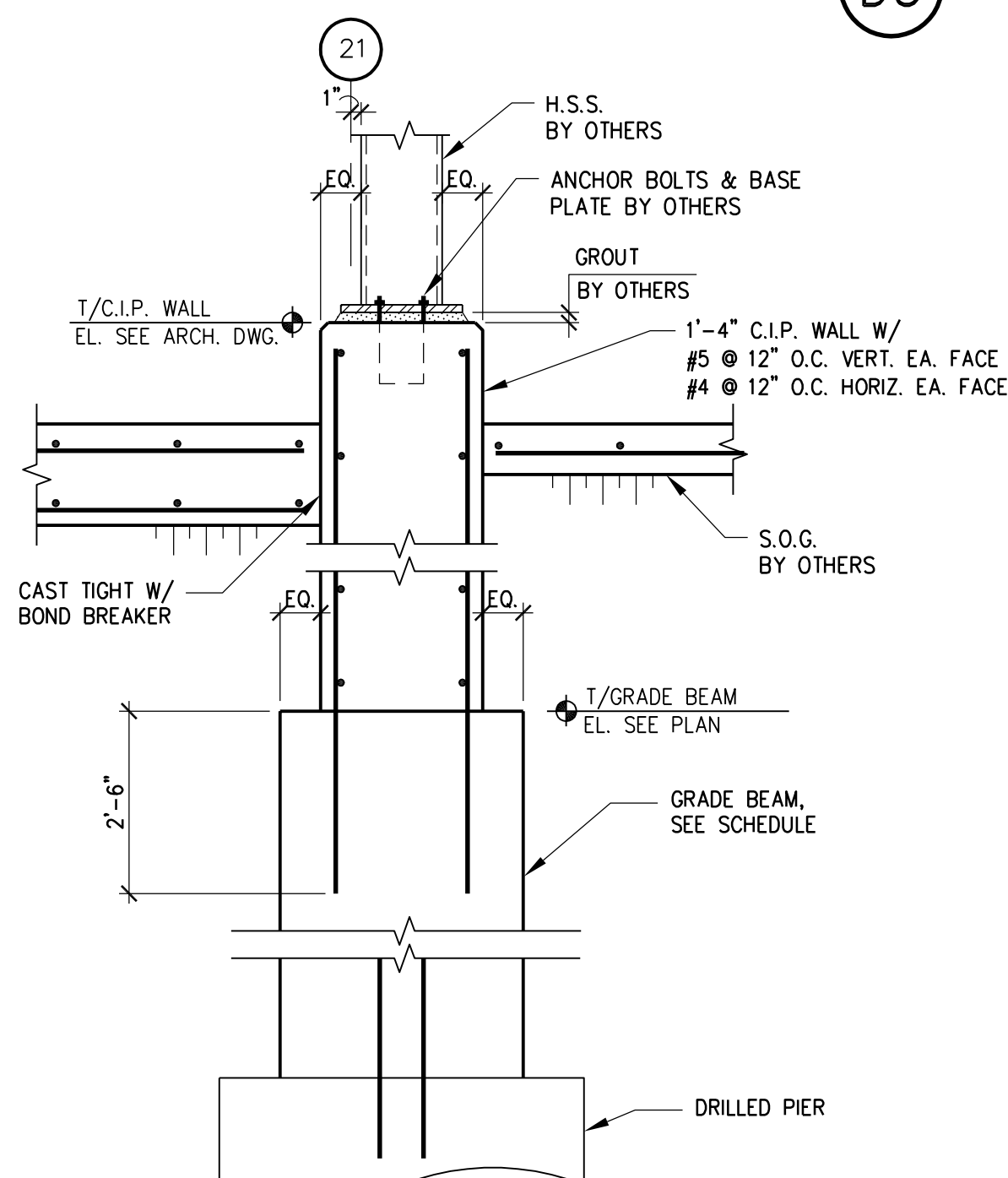
F1 GRADE BEAM SPLICE LOCATION



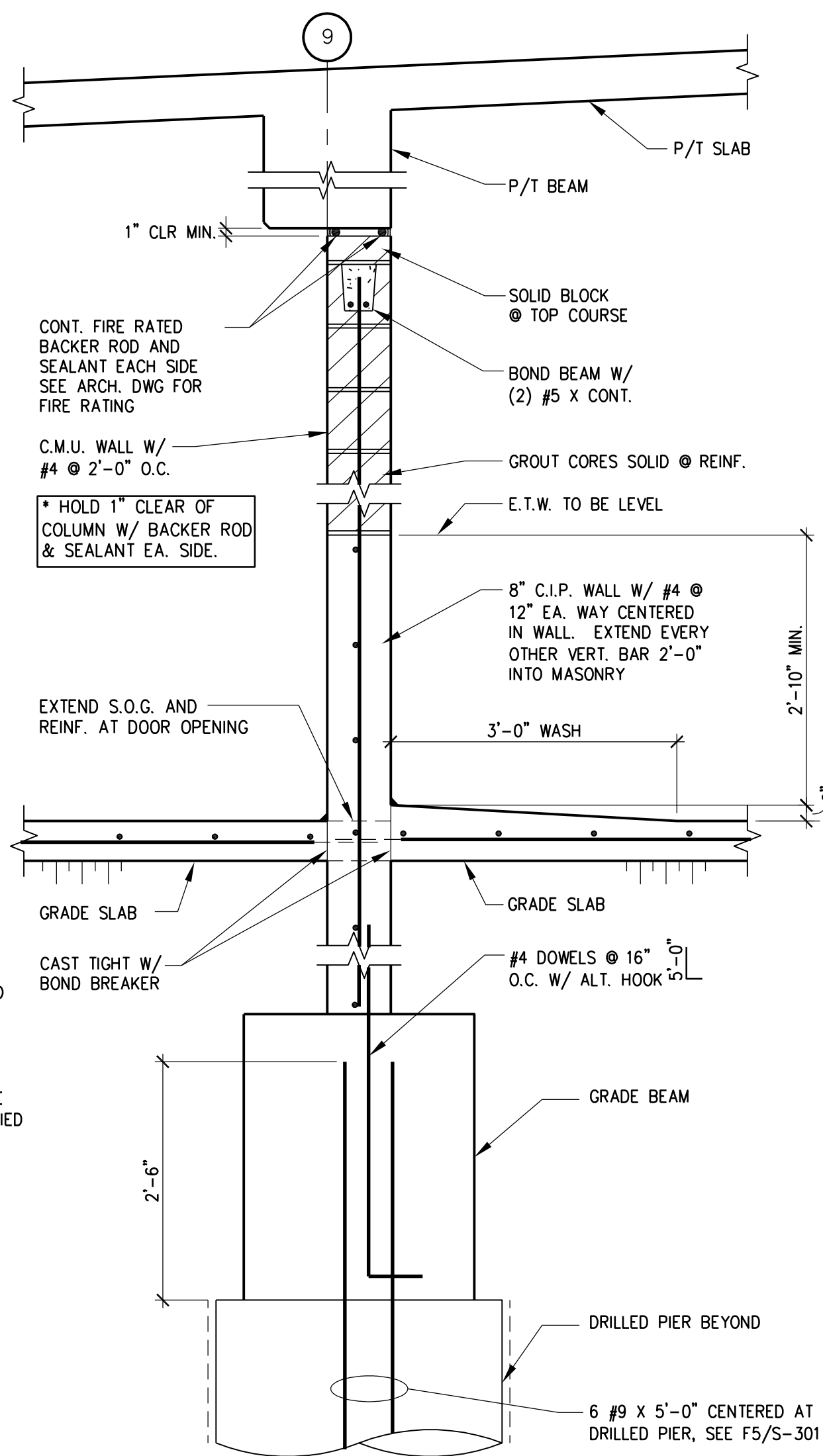
B3 INTERIOR WALL DETAIL



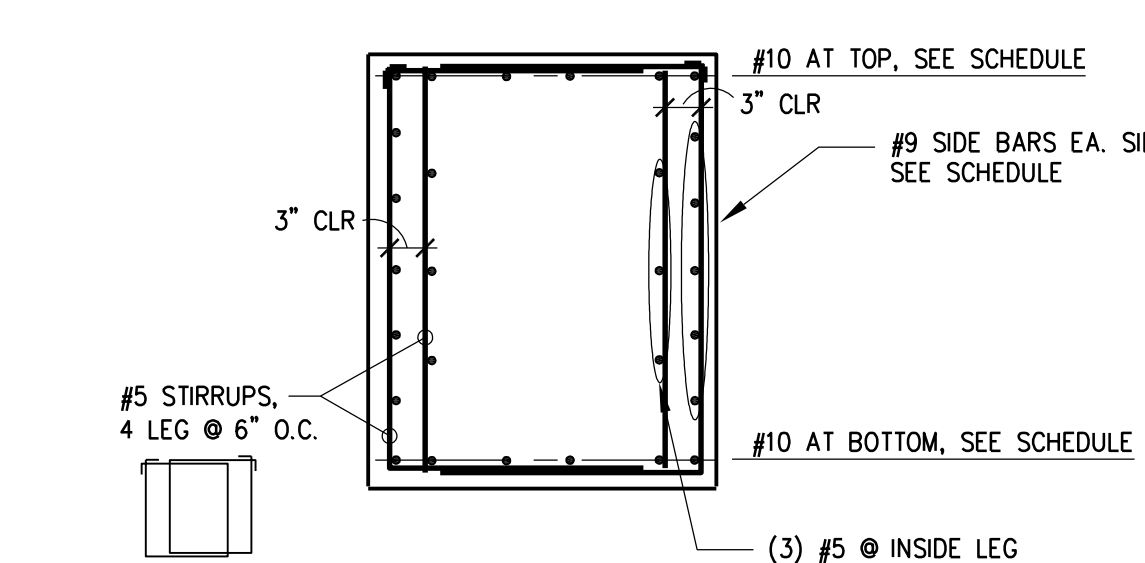
D3 GRADE BEAM CONSTRUCTION JOINT



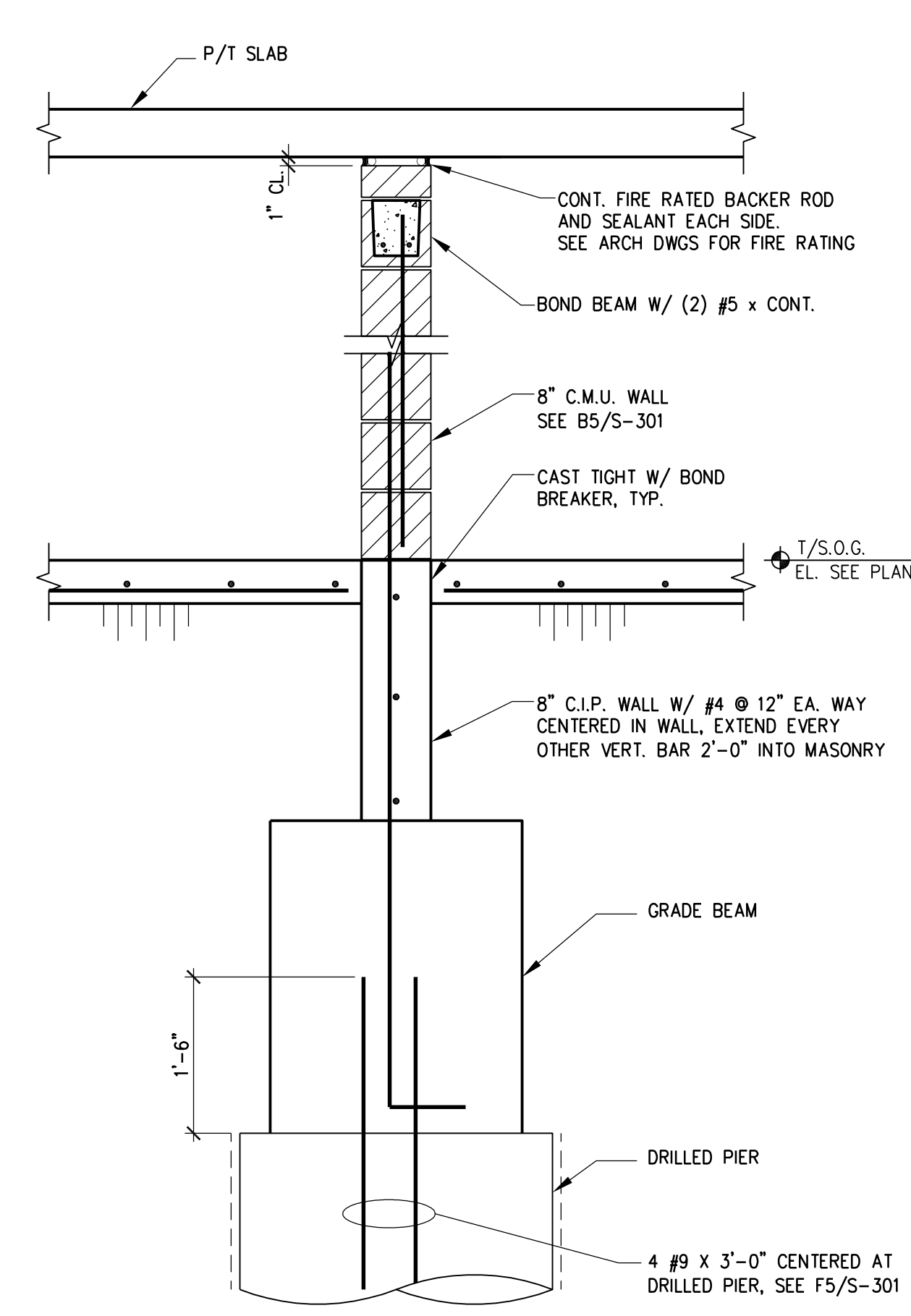
F3 C.I.P. PIER/GRADE BEAM DETAIL



B5 MASONRY WALL DETAIL



D5 GRADE BEAM DETAIL



B7 WALL FOOTING SECTION

DRILLED PIER SCHEDULE					
MARK	DIAMETER	SHAFT		REINFT. LENGTH	REMARKS
		VERT. REINF.	TIES		
DP36	3'-0"	7 - #8	#4 @ 18"	17'-6"	
DP42	3'-6"	7 - #9	#4 @ 18"	17'-6"	
DP48	4'-0"	8 - #10	#4 @ 18"	17'-6"	
DP54	4'-6"	9 - #10	#4 @ 18"	17'-6"	
DP60	5'-0"	9 - #11	#4 @ 18"	19'-0"	
DP66	5'-6"	20 - #11	#4 @ 18"	FULL LENGTH	ALONG GRID A

DRILLED PIER NOTES:  
1. DRILLED PIERS ARE DESIGNED FOR NET ALLOWABLE BEARING PRESSURE OF 80 KSF AND BEAR ON MODERATELY WEATHERED LIMESTONE BEDROCK, SEE GEOTECHNICAL REPORT.

REINFORCED GRADE BEAM SCHEDULE								
MARK	SIZE		REINFORCEMENT		STIRRUPS			REMARKS
	W	D	TOP	BOTTOM	TYPE	SIZE	SPACING EA. END	
GB1	24"	42"	(6) #9	(4) #9		#4	3@3", 6@6" REM. @ 12"	(3) #5
GB2	24"	24"	(4) #8	(4) #8		#4	3@3", 3@6" REM. @ 12"	-
GB3	38"	48"	(6) #10	(6) #10		#5	3@3", 8@4" REM. @ 6"	(5) #9
GB4	24"	36"	(4) #9	(3) #9		#4	3@3", 3@6" REM. @ 12"	(3) #5
GB5	38"	42"	(6) #10	(6) #10		#5	@ 6"	(5) #9
GB6	24"	36"	(4) #9	(4) #9		#4	3@2", 8@4" REM. @ 6"	(3) #8

DRILLED PIER CAP SCHEDULE					
MARK	PIER CAP SIZE			CAP REINFORCEMENT	
	L	X	W X D	VERT. EA. WAY	HORIZ. EA. WAY
PC1	5'-6"	X	5'-6" X 3'-6"	#5 @ 12"	#5 @ 12"
PC2	5'-6"	X	5'-6" X 3'-0"	#5 @ 12"	#5 @ 12"
PC3	6'-0"	X	6'-0" X 3'-0"	#5 @ 12"	#5 @ 12"
PC4	6'-8"	X	6'-8" X 4'-0"	#7 @ 6"	#5 @ 12"
PC5	4'-6"	X	4'-6" X 3'-0"	#5 @ 12"	#5 @ 12"

F5 DOWEL DETAIL

<b>CONSULTANTS/ENGINEERS:</b>		<b>ARCHITECT:</b>		<b>Project Title</b>		<b>Project Number</b>	
<b>KJWW ENGINEERING CONSULTANTS</b> Mechanical/Electrical/Plumbing Engineer		<b>Loebl Schlossman &amp; Hackl</b> Architecture • Planning • Interiors		<b>400 CAR PARKING GARAGE</b>		<b>636-402</b>	
<b>TERRACON</b> Geotechnical Engineer						<b>Building Number</b>	
323 26TH AVENUE ROCK ISLAND, ILLINOIS 61201 309.788.0673 Telephone 309.786.5967 Fax						<b>43</b>	
<b>GRAEF</b> Civil Engineer/Landscape Architect				<b>Location</b>		<b>Drawing Number</b>	
2640 12TH STREET SW CEDAR RAPIDS, IOWA 52404 319.366.8321 Telephone 319.366.0032 Fax				<b>IOWA CITY, IA</b>		<b>S-301</b>	
<b>WALKER PARKING CONSULTANTS</b> Structural Engineer				<b>Date</b>		<b>Checked</b>	
505 DAVIS ROAD ELGIN, ILLINOIS 60123 847.697.2640 Telephone 847.697.7439 Fax				<b>06/10/2011</b>		<b>BFN</b>	
<b>FAITHFUL+GOULD</b> Cost Management				<b>Drawn</b>		<b>MJK</b>	
222 SOUTH RIVERSIDE PLAZA, SUITE 2240 CHICAGO, ILLINOIS 60606 312.612.6319 Telephone 312.655.9037 Fax				<b>Department of Veterans Affairs</b>		<b>Dwg. 89 of 152</b>	
<b>Revisions:</b>							
1. ACCEPTABLE SPLICE LOCATIONS ARE AT MIDSPAN FOR TOP BARS AND SUPPORT FOR BOTTOM BARS AND SIDE BARS.							
2. PLACE GRADE BEAM AND PIER CAP MONOLITHICALLY.							