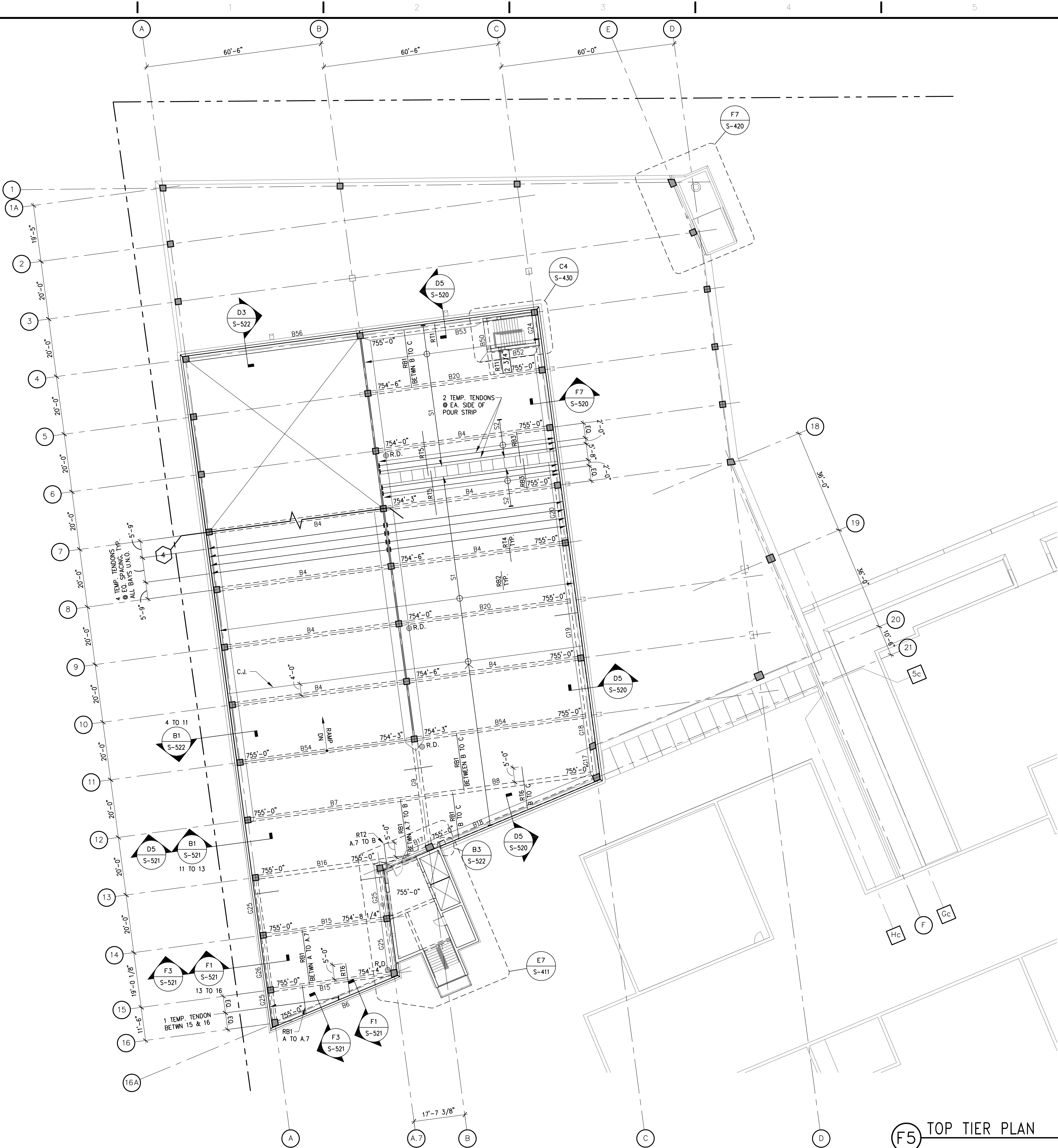
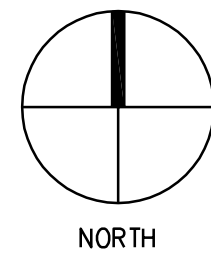


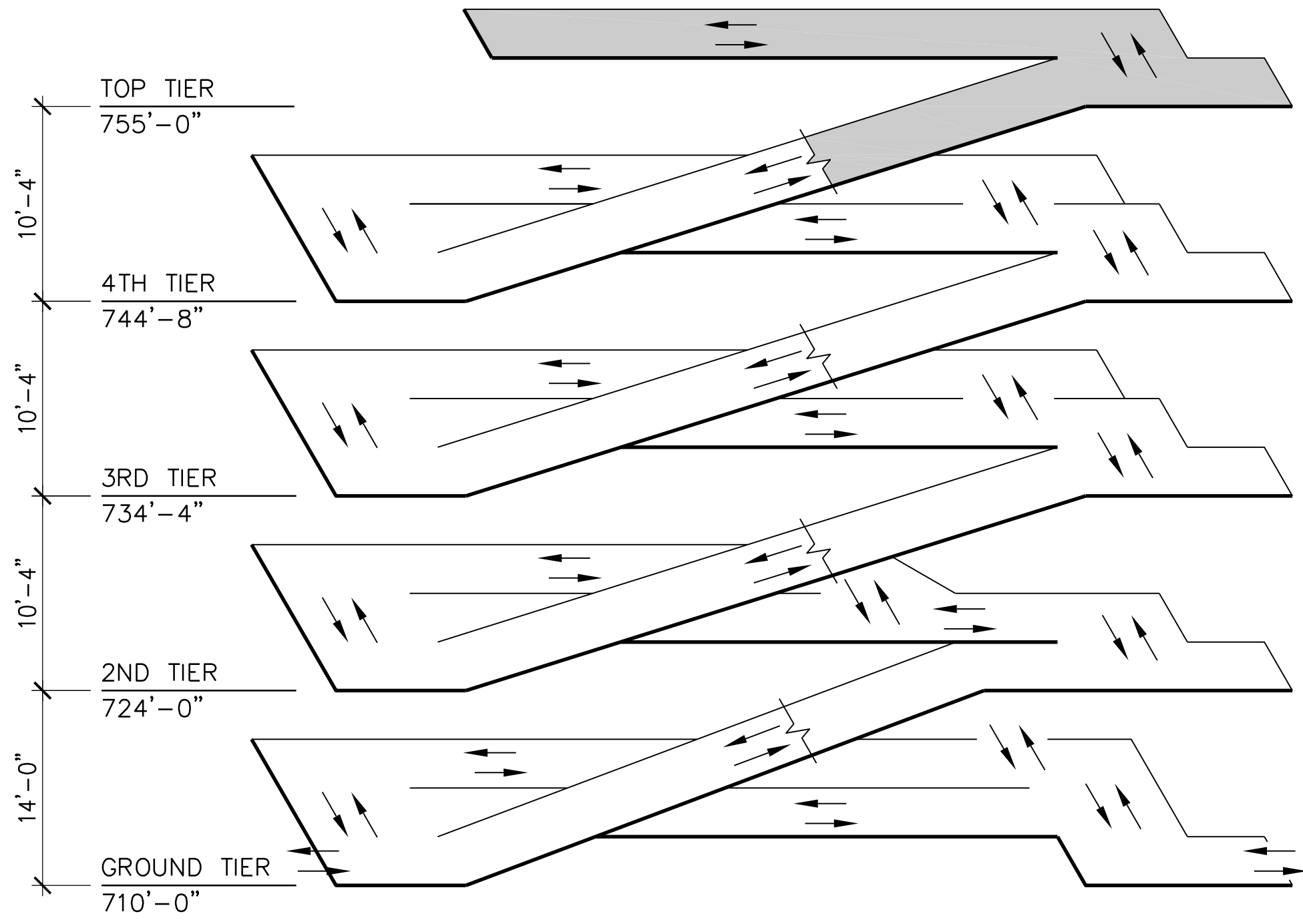
one eighth inch = one foot
one quarter inch = one foot
three eighths inch = one foot
one half inch = one foot
three quarters inch = one foot
one inch = one foot
one and one half inches = one foot
two inches = one foot
three inches = one foot
four inches = one foot
five inches = one foot
six inches = one foot
seven inches = one foot
eight inches = one foot
nine inches = one foot
ten inches = one foot
eleven inches = one foot
twelve inches = one foot
thirteen inches = one foot
fourteen inches = one foot
fifteen inches = one foot
sixteen inches = one foot
seventeen inches = one foot
eighteen inches = one foot
nineteen inches = one foot
twenty inches = one foot
twenty one inches = one foot
twenty two inches = one foot
twenty three inches = one foot
twenty four inches = one foot
twenty five inches = one foot
twenty six inches = one foot
twenty seven inches = one foot
twenty eight inches = one foot
twenty nine inches = one foot
thirty inches = one foot
thirty one inches = one foot
thirty two inches = one foot
thirty three inches = one foot
thirty four inches = one foot
thirty five inches = one foot
thirty six inches = one foot
thirty seven inches = one foot
thirty eight inches = one foot
thirty nine inches = one foot
forty inches = one foot
forty one inches = one foot
forty two inches = one foot
forty three inches = one foot
forty four inches = one foot
forty five inches = one foot
forty six inches = one foot
forty seven inches = one foot
forty eight inches = one foot
forty nine inches = one foot
fifty inches = one foot
fifty one inches = one foot
fifty two inches = one foot
fifty three inches = one foot
fifty four inches = one foot
fifty five inches = one foot
fifty six inches = one foot
fifty seven inches = one foot
fifty eight inches = one foot
fifty nine inches = one foot
sixty inches = one foot
sixty one inches = one foot
sixty two inches = one foot
sixty three inches = one foot
sixty four inches = one foot
sixty five inches = one foot
sixty six inches = one foot
sixty seven inches = one foot
sixty eight inches = one foot
sixty nine inches = one foot
seventy inches = one foot
seventy one inches = one foot
seventy two inches = one foot
seventy three inches = one foot
seventy four inches = one foot
seventy five inches = one foot
seventy six inches = one foot
seventy seven inches = one foot
seventy eight inches = one foot
seventy nine inches = one foot
eighty inches = one foot
eighty one inches = one foot
eighty two inches = one foot
eighty three inches = one foot
eighty four inches = one foot
eighty five inches = one foot
eighty six inches = one foot
eighty seven inches = one foot
eighty eight inches = one foot
eighty nine inches = one foot
ninety inches = one foot
ninety one inches = one foot
ninety two inches = one foot
ninety three inches = one foot
ninety four inches = one foot
ninety five inches = one foot
ninety six inches = one foot
ninety seven inches = one foot
ninety eight inches = one foot
ninety nine inches = one foot
one hundred inches = one foot



F5 TOP TIER PLAN



IT SHALL BE THE CONTRACTOR'S RESPONSIBILITY TO VERIFY THAT THERE IS A MINIMUM OF 7'-2" HEADROOM BETWEEN ALL DRIVING SURFACES AND OVERHEAD BEAMS PRIOR TO PLACING CONCRETE.



ISOMETRIC

SHEET NOTES:
1. SEE SHEET S-103 FOR TYPICAL SECTIONS, DETAILS AND NOTES.

		CONSULTANTS/ENGINEERS:						ARCHITECT:				Drawing Title		Project Title		Project Number		Office of Construction and Facilities Management	
		KJWW ENGINEERING CONSULTANTS Mechanical/Electrical/Plumbing Engineer		TERRACON Geotechnical Engineer		GRAEF Civil Engineer/Landscape Architect		WALKER PARKING CONSULTANTS Structural Engineer		FAITHFUL+ GOULD Cost Management		TOP TIER PLAN		400 CAR PARKING GARAGE		636-402			
FINAL CONSTRUCTION DOCUMENTS		06/10/11		332 SOUTH MICHIGAN, SUITE 1400 ROCK ISLAND, ILLINOIS 61201		CHICAGO, ILLINOIS 60604-4367		505 DAVIS ROAD ELGIN, ILLINOIS 60123		222 SOUTH RIVERSIDE PLAZA, SUITE 2240 CHICAGO, ILLINOIS 60606		Iowa City VA Healthcare System Department of Veterans Affairs Medical Center		IOWA CITY, IA		Building Number 43			
100% REVIEW SUBMISSION (NOT FOR CONSTRUCTION)		06/11/11		319.366.8371 Telephone 309.786.5967 Fax		312.939.7014 Fax		312.562.2620 Telephone 847.697.7439 Fax		312.565.1800 Telephone 312.565.5912 Facsimile www.lshdesign.com		Approved: Project Director		Location		Drawing Number			
75% REVIEW SUBMISSION (NOT FOR CONSTRUCTION)		02/20/11										Iowa City VA Healthcare System Department of Veterans Affairs Medical Center		IOWA CITY, IA		S-105			
75% REVIEW SUBMISSION (NOT FOR CONSTRUCTION) - COST ESTIMATE		01/19/11												Date		Dwg. 87 of 152			
35% REVIEW SUBMISSION (NOT FOR CONSTRUCTION)		11/22/10												Checked					
Revisions:		Date												BFN		MJK			