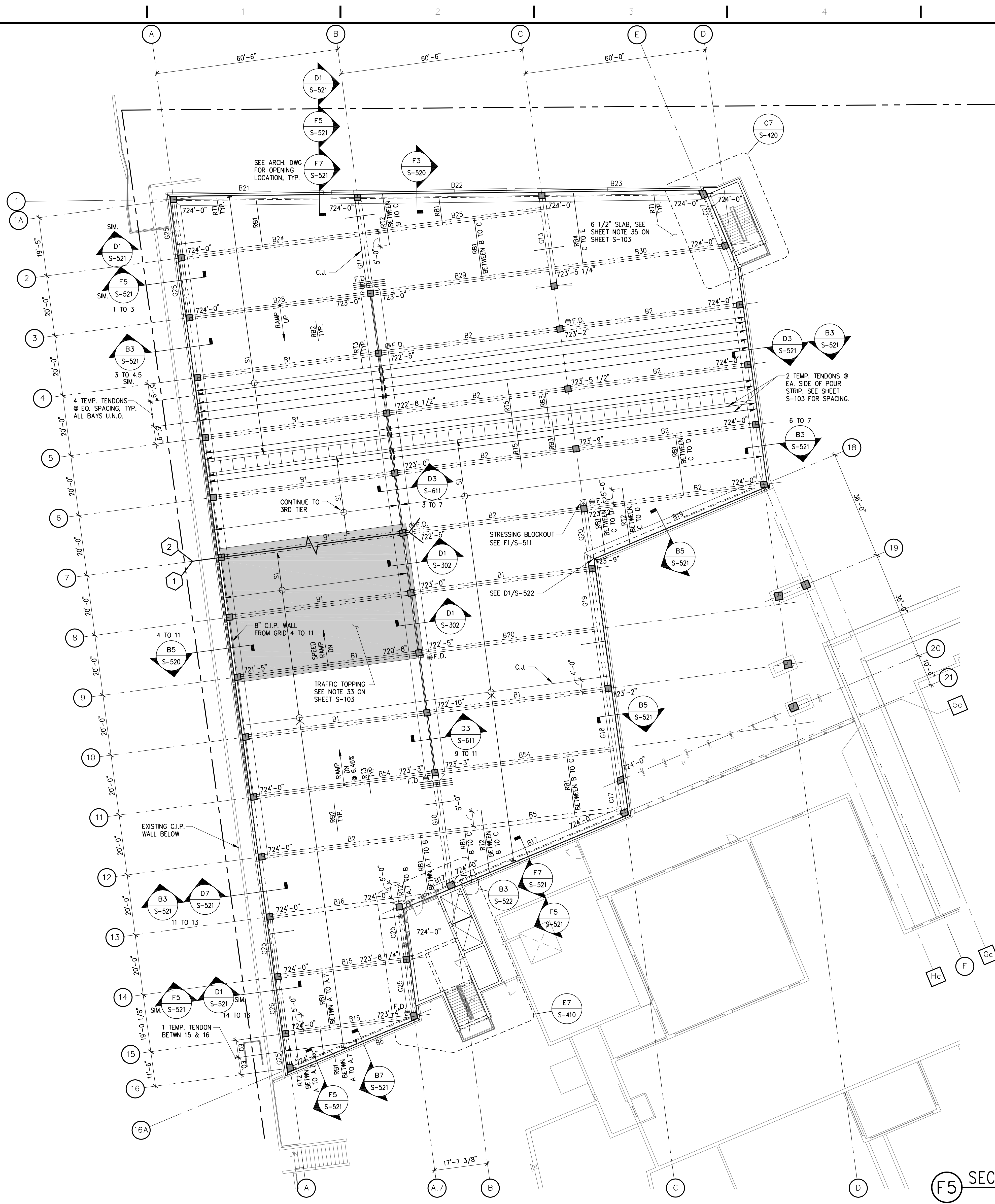
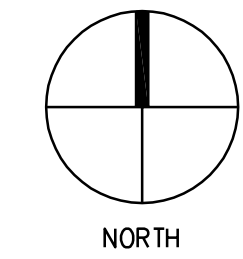


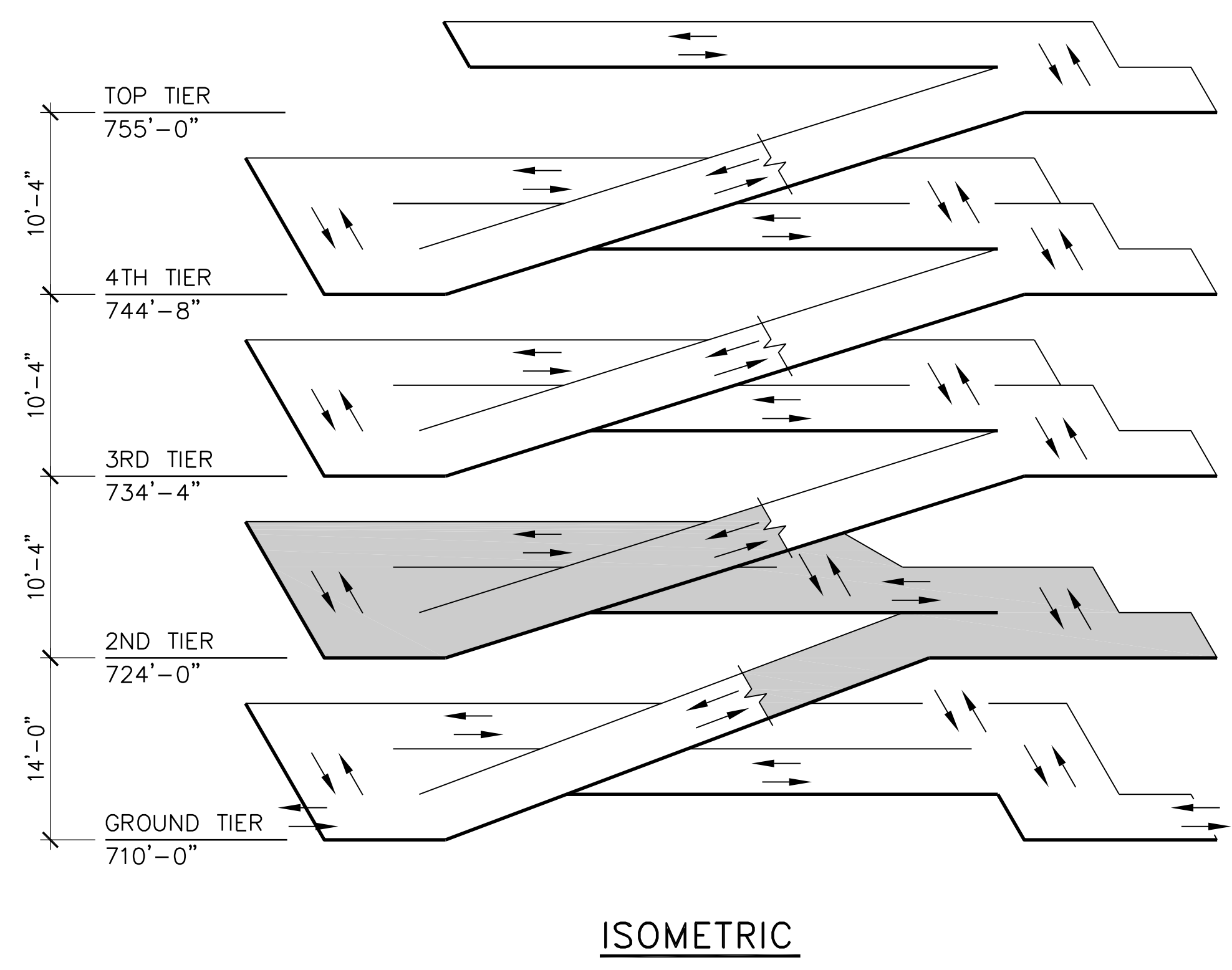
one eighth inch = one foot  
one quarter inch = one foot  
one half inch = one foot  
three eighths inch = one foot  
three quarters inch = one foot  
one inch = one foot  
one and one half inches = one foot  
two inches = one foot  
three inches = one foot  
four inches = one foot  
five inches = one foot  
six inches = one foot  
seven inches = one foot  
eight inches = one foot  
nine inches = one foot  
ten inches = one foot  
eleven inches = one foot  
twelve inches = one foot  
thirteen inches = one foot  
fourteen inches = one foot  
fifteen inches = one foot  
sixteen inches = one foot  
seventeen inches = one foot  
eighteen inches = one foot  
nineteen inches = one foot  
twenty inches = one foot  
twenty one inches = one foot  
twenty two inches = one foot  
twenty three inches = one foot  
twenty four inches = one foot  
twenty five inches = one foot  
twenty six inches = one foot  
twenty seven inches = one foot  
twenty eight inches = one foot  
twenty nine inches = one foot  
thirty inches = one foot  
thirty one inches = one foot  
thirty two inches = one foot  
thirty three inches = one foot  
thirty four inches = one foot  
thirty five inches = one foot  
thirty six inches = one foot  
thirty seven inches = one foot  
thirty eight inches = one foot  
thirty nine inches = one foot  
forty inches = one foot  
forty one inches = one foot  
forty two inches = one foot  
forty three inches = one foot  
forty four inches = one foot  
forty five inches = one foot  
forty six inches = one foot  
forty seven inches = one foot  
forty eight inches = one foot  
forty nine inches = one foot  
fifty inches = one foot  
fifty one inches = one foot  
fifty two inches = one foot  
fifty three inches = one foot  
fifty four inches = one foot  
fifty five inches = one foot  
fifty six inches = one foot  
fifty seven inches = one foot  
fifty eight inches = one foot  
fifty nine inches = one foot  
sixty inches = one foot  
sixty one inches = one foot  
sixty two inches = one foot  
sixty three inches = one foot  
sixty four inches = one foot  
sixty five inches = one foot  
sixty six inches = one foot  
sixty seven inches = one foot  
sixty eight inches = one foot  
sixty nine inches = one foot  
seventy inches = one foot  
seventy one inches = one foot  
seventy two inches = one foot  
seventy three inches = one foot  
seventy four inches = one foot  
seventy five inches = one foot  
seventy six inches = one foot  
seventy seven inches = one foot  
seventy eight inches = one foot  
seventy nine inches = one foot  
eighty inches = one foot  
eighty one inches = one foot  
eighty two inches = one foot  
eighty three inches = one foot  
eighty four inches = one foot  
eighty five inches = one foot  
eighty six inches = one foot  
eighty seven inches = one foot  
eighty eight inches = one foot  
eighty nine inches = one foot  
ninety inches = one foot  
ninety one inches = one foot  
ninety two inches = one foot  
ninety three inches = one foot  
ninety four inches = one foot  
ninety five inches = one foot  
ninety six inches = one foot  
ninety seven inches = one foot  
ninety eight inches = one foot  
ninety nine inches = one foot  
one hundred inches = one foot



F5 SECOND TIER PLAN



IT SHALL BE THE CONTRACTOR'S RESPONSIBILITY TO VERIFY THAT THERE IS A MINIMUM OF 7'-2" HEADROOM BETWEEN ALL DRIVING SURFACES AND OVERHEAD BEAMS PRIOR TO PLACING CONCRETE.



SHEET NOTES:  
1. SEE SHEET S-103 FOR TYPICAL SECTIONS, DETAILS AND NOTES.

FINAL CONSTRUCTION DOCUMENTS	06/10/11
100% REVIEW SUBMISSION (NOT FOR CONSTRUCTION)	04/11/11
75% REVIEW SUBMISSION (NOT FOR CONSTRUCTION)	02/03/11
75% REVIEW SUBMISSION (NOT FOR CONSTRUCTION) - COST ESTIMATE	01/19/11
35% REVIEW SUBMISSION (NOT FOR CONSTRUCTION)	11/22/10
Revisions:	Date

**CONSULTANTS/ENGINEERS:**  
**KJMW ENGINEERING CONSULTANTS**  
Mechanical/Electrical/Plumbing Engineer  
623 26TH AVENUE  
RIVER ISLAND, ILLINOIS 61201  
309.788.0673 Telephone  
309.786.5967 Fax

**TERRACON**  
Geotechnical Engineer  
2640 12TH STREET SW  
CEDAR RAPIDS, IOWA 52404  
319.366.8321 Telephone  
319.366.0032 Fax

**GRAF**  
Civil Engineer/Landscape Architect  
332 SOUTH MICHIGAN, SUITE 1400  
CHICAGO, ILLINOIS 60604-4367  
312.582.2020 Telephone  
312.939.7014 Fax

**WALKER PARKING CONSULTANTS**  
Structural Engineer  
305 DAVIS ROAD  
ELGIN, ILLINOIS 60123  
847.697.2640 Telephone  
847.697.7439 Fax

**FAITHFUL + GOULD**  
Cost Management  
222 SOUTH RIVERSIDE PLAZA, SUITE 2240  
CHICAGO, ILLINOIS 60606  
312.612.6319 Telephone  
312.655.9037 Fax

**ARCHITECT:**  
**Loebl Schlossman & Hackl**  
Architecture • Planning • Interiors  
233 North Michigan Avenue  
Suite 3000  
Chicago, Illinois 60601  
312.565.1800 Telephone  
312.565.5912 Facsimile  
www.lshdesign.com

Drawing Title  
**SECOND TIER PLAN**  
Approved: Project Director  
**Iowa City VA Healthcare System**  
Department of Veterans Affairs Medical Center

Project Title  
**400 CAR PARKING GARAGE**  
Location  
**IOWA CITY, IA**  
Date  
**06/10/2011**  
Checked  
**BFN**  
Drawn  
**MJK**  
Project Number  
**636-402**  
Building Number  
**43**  
Drawing Number  
**S-102**  
Dwg. 84 of 152

Office of  
Construction  
and Facilities  
Management  
Department of  
Veterans Affairs