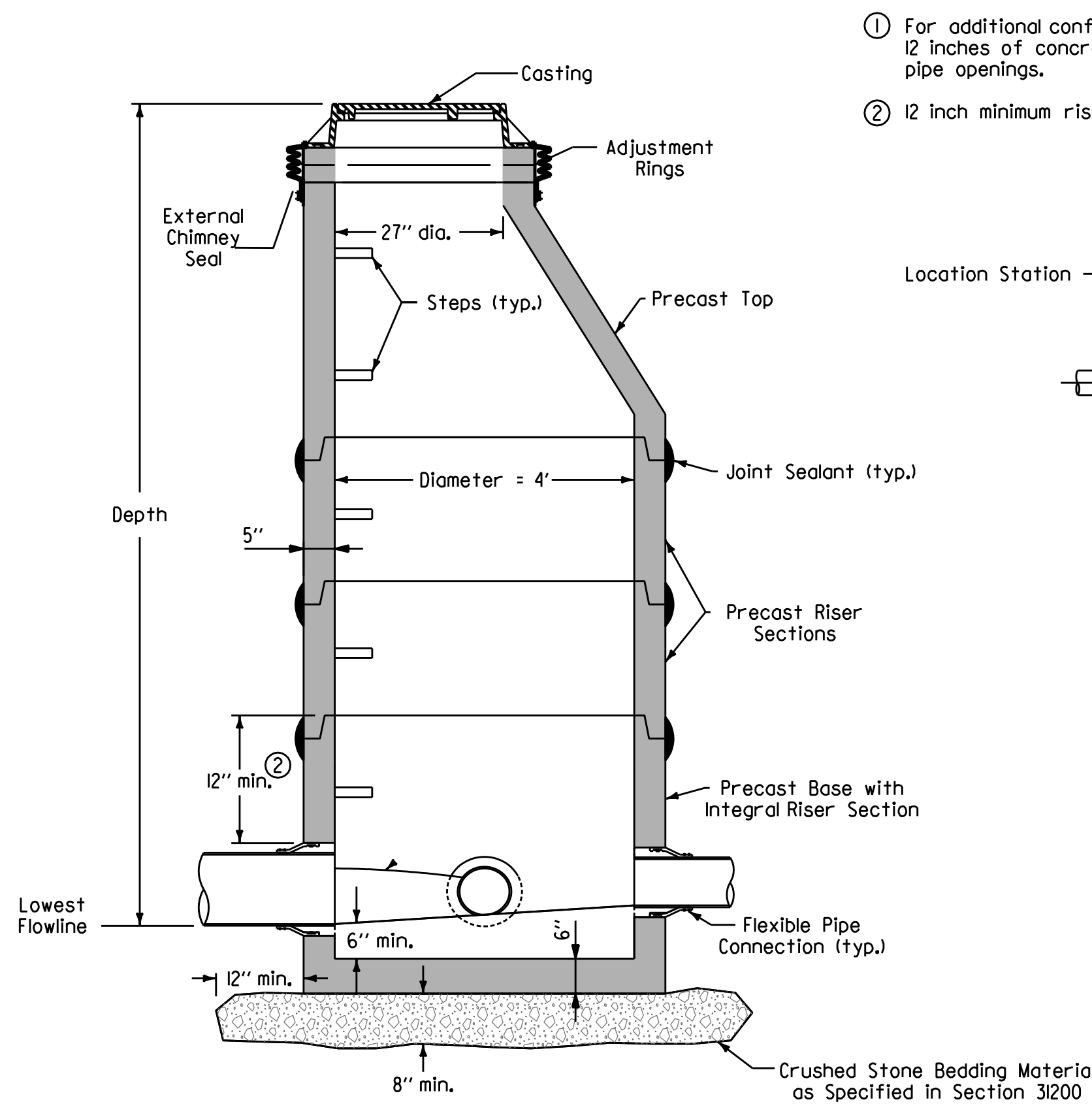
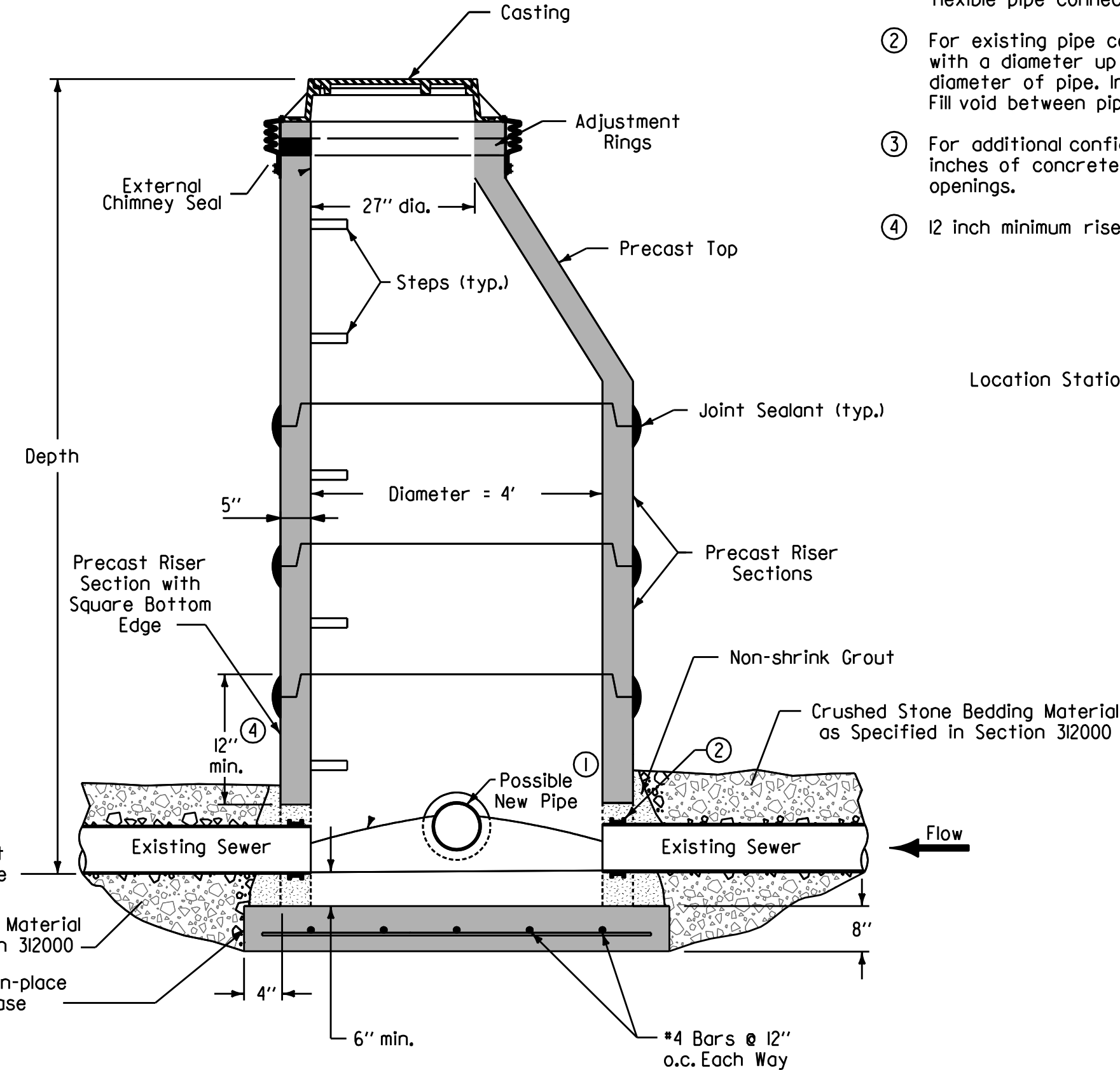
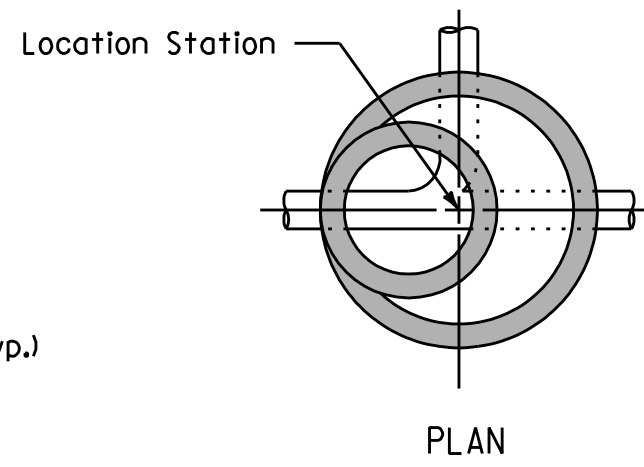


three inches = one foot
one and one half inches = one foot
one inch = one foot
three quarters inch = one foot
three quarters inch = one foot
one half inch = one foot
one half inch = one foot
three eighths inch = one foot
one quarter inch = one foot
one eighth inch = one foot



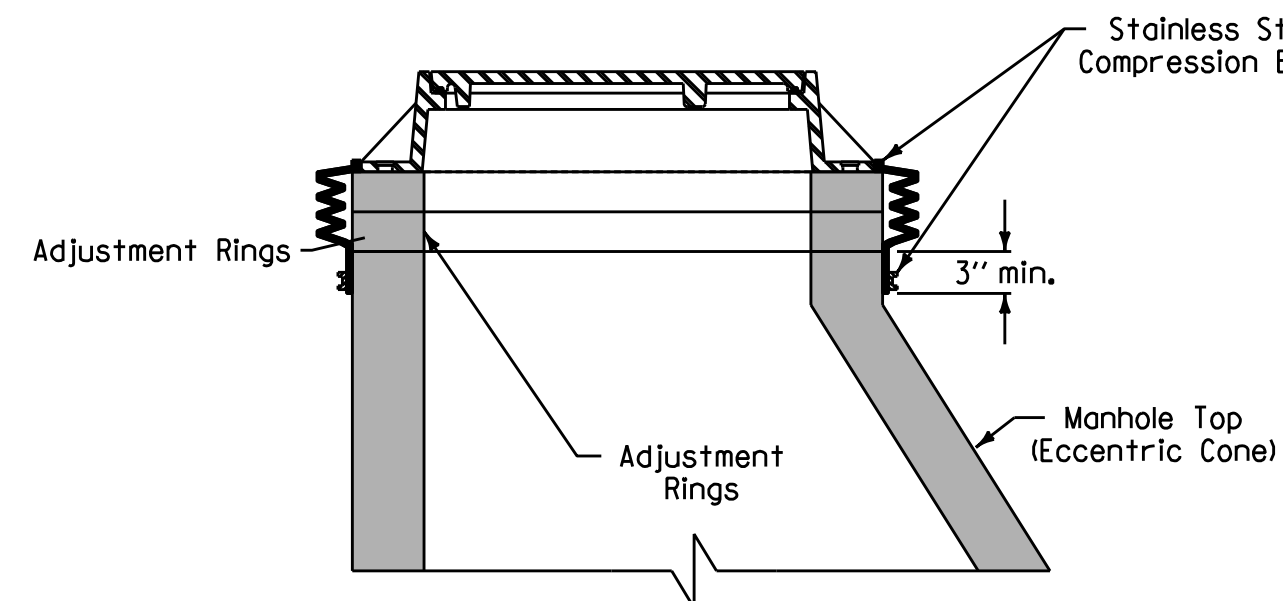
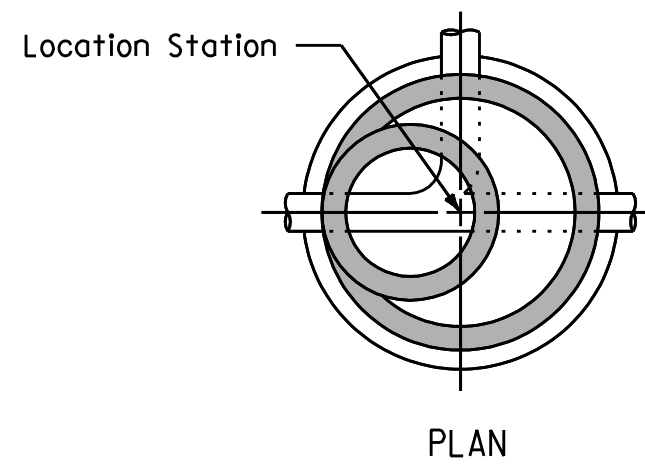
① SANITARY MANHOLE
N.T.S.
FROM SUDAS STANDARD SW-301

- ① For additional configurations, maintain a minimum of 12 inches of concrete between vertical edges of pipe openings.
- ② 12 inch minimum riser height above all pipe openings.

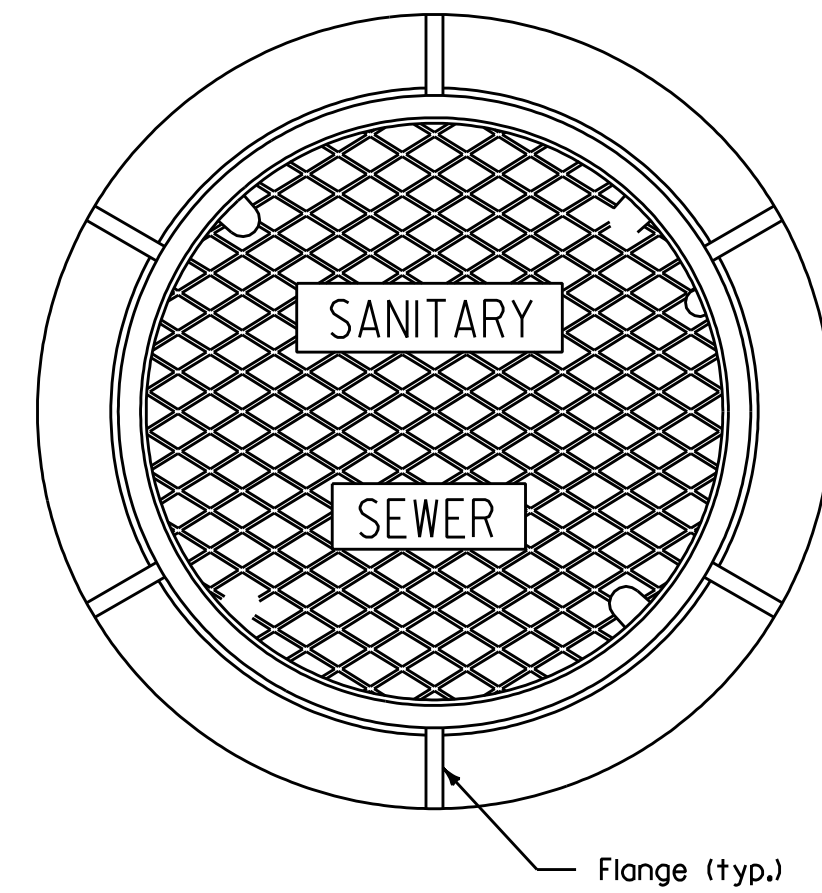


② SANITARY MANHOLE OVER EXISTING SEWER
N.T.S.
FROM SUDAS STANDARD SW-303

- ① For new pipe connections, provide cored opening with flexible pipe connector.
- ② For existing pipe connections, provide an arched opening with a diameter up to 6 inches larger than outside diameter of pipe. Install waterstop around existing pipe. Fill void between pipe and opening with non-shrink grout.
- ③ For additional configurations, maintain a minimum of 12 inches of concrete between vertical edges of pipe openings.
- ④ 12 inch minimum riser height above all pipe openings.

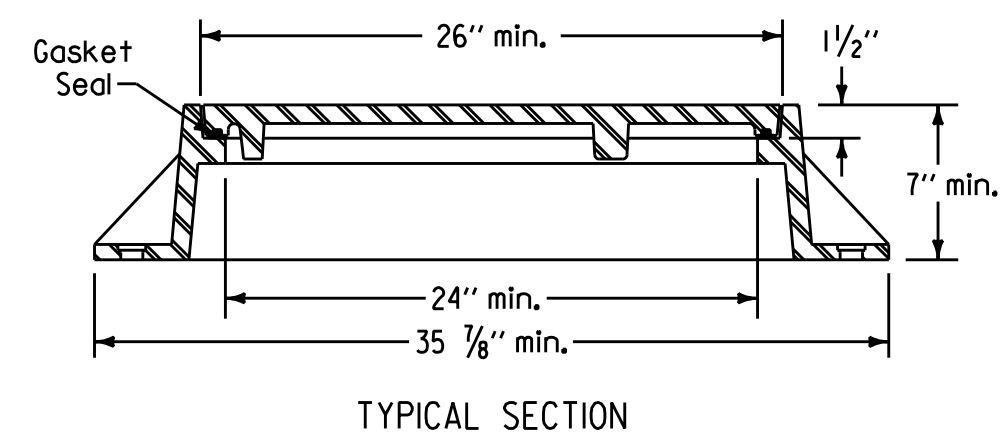


③ EXTERNAL CHIMNEY SEAL
N.T.S.
FROM SUDAS STANDARD SW-306

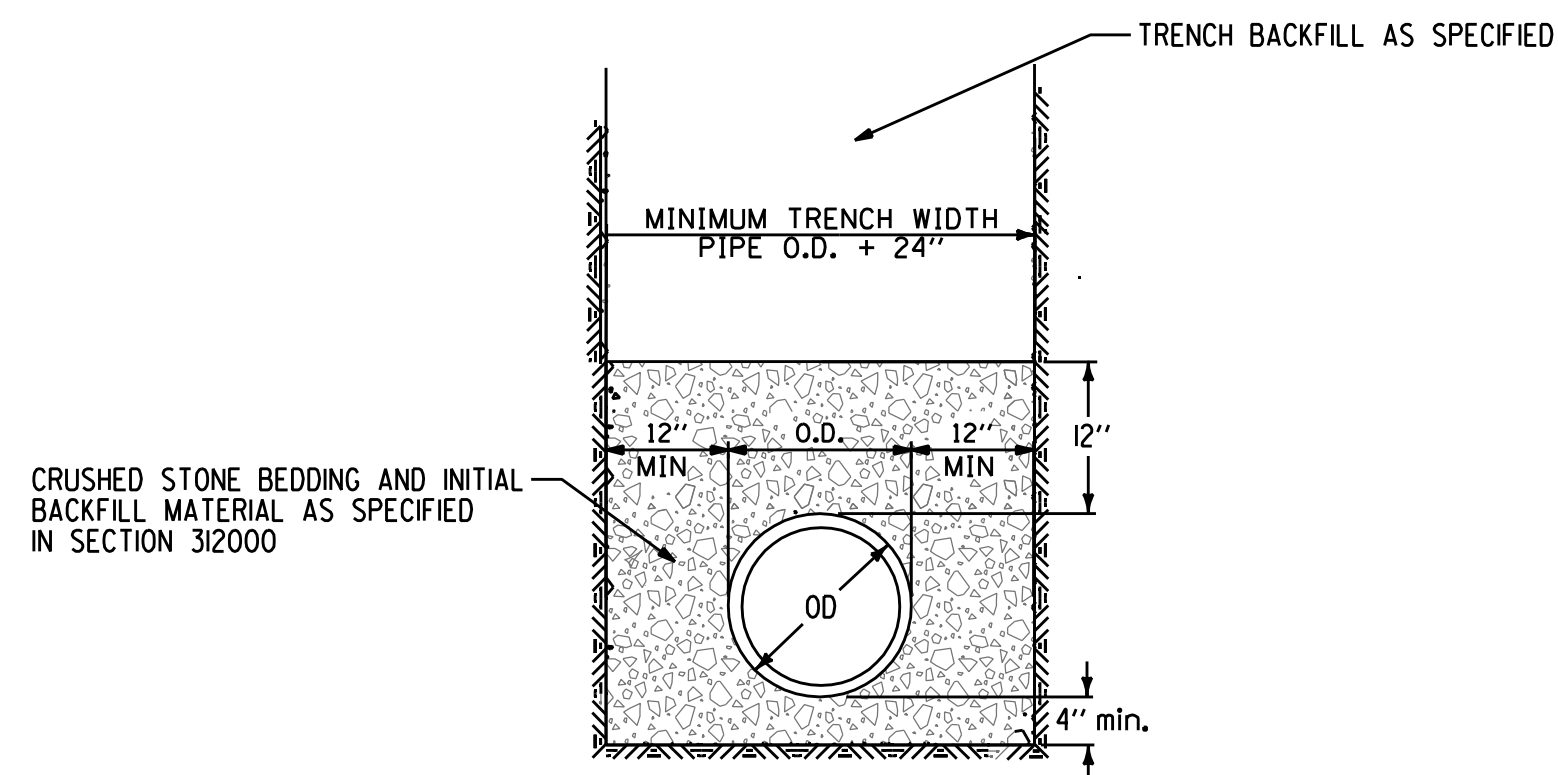


Frame Notes:
Size and spacing of lugs and flanges may vary.

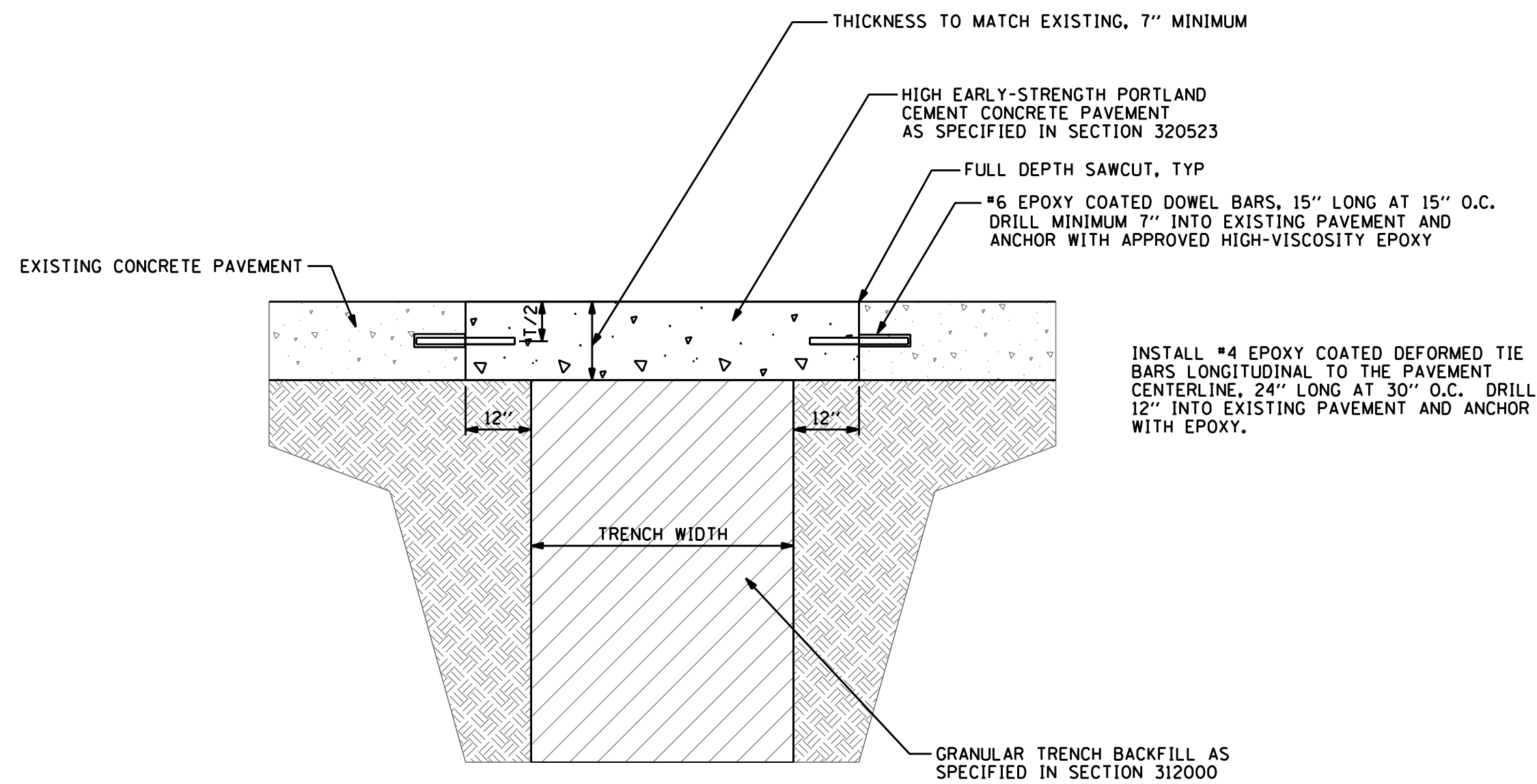
Cover Notes:
Roughness pattern and text style may vary.
Minimum one concealed pickhole.



④ CASTING FOR SANITARY SEWER MANHOLES
N.T.S.
FROM SUDAS STANDARD SW-601



⑤ SANITARY SEWER BEDDING REQUIREMENTS
N.T.S.



⑥ UTILITY TRENCH PATCH IN CONCRETE PAVEMENT
N.T.S.
FROM VA DETAIL SD321216-03

FINAL CONSTRUCTION DOCUMENTS	06/10/11
100% REVIEW SUBMISSION (NOT FOR CONSTRUCTION)	04/11/11
75% REVIEW SUBMISSION (NOT FOR CONSTRUCTION)	02/03/11
75% REVIEW SUBMISSION (NOT FOR CONSTRUCTION) - COST ESTIMATE	01/19/11
35% REVIEW SUBMISSION (NOT FOR CONSTRUCTION)	11/22/10
Revisions:	Date

CONSULTANTS/ENGINEERS:

KJWW ENGINEERING CONSULTANTS
Mechanical/Electrical/Plumbing Engineer
623 26TH AVENUE
ROCK ISLAND, ILLINOIS 61201
309.786.0673 Telephone
309.786.5967 Fax

TERRACON
Geotechnical Engineer
2640 12TH STREET SW
CEDAR RAPIDS, IOWA 52404
319.366.8321 Telephone
319.366.0032 Fax

GRAEF
Civil Engineer/Landscape Architect
332 SOUTH MICHIGAN, SUITE 1400
CHICAGO, ILLINOIS 60604-4367
312.582.2020 Telephone
312.939.7014 Fax

WALKER PARKING CONSULTANTS
Structural Engineer
906 DAVIS ROAD
ELGIN, ILLINOIS 60123
847.697.2640 Telephone
847.697.7439 Fax

FAITHFUL + GOULD
Cost Management
222 SOUTH RIVERSIDE PLAZA, SUITE 2240
CHICAGO, ILLINOIS 60606
312.655.9037 Telephone
312.655.9037 Fax

ARCHITECT:

Loebl Schlossman & Hackl
Architecture • Planning • Interiors

233 North Michigan Avenue
Suite 3000
Chicago, Illinois 60601

312.565.1800 Telephone
312.565.5912 Facsimile
www.lshdesign.com

Drawing Title

SANITARY SEWER DETAILS

Approved: Project Director

Iowa City VA Healthcare System
Department of Veterans Affairs Medical Center

Project Title

400 CAR PARKING GARAGE

Location
IOWA CITY, IA

Date
06/10/2011

Checked
MAY

Drawn
IN

Project Number

636-402

Building Number

43

Drawing Number

43-L14.1

Dwg. 22 of 152

Office of
Construction
and Facilities
Management

Department of
Veterans Affairs