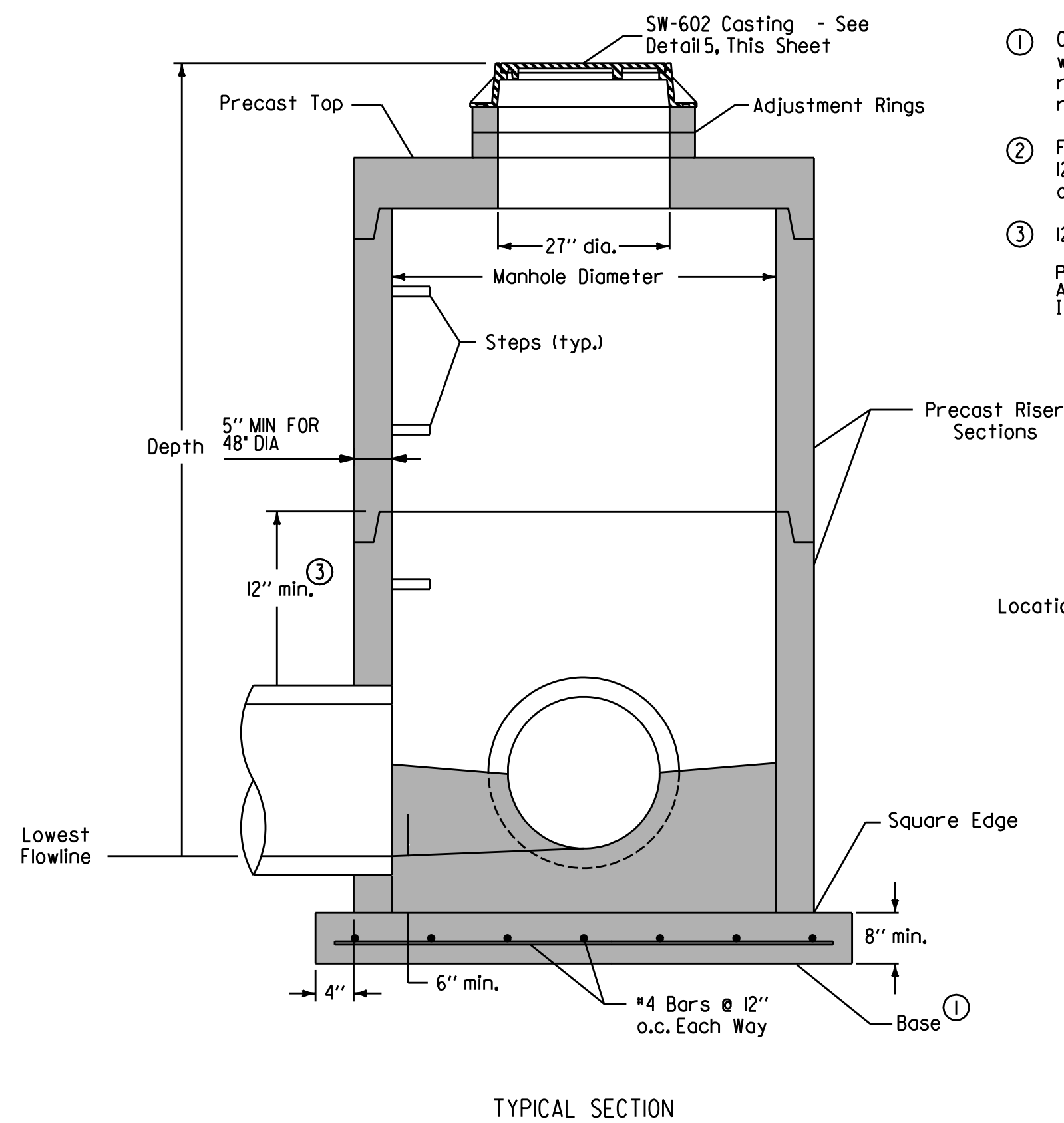
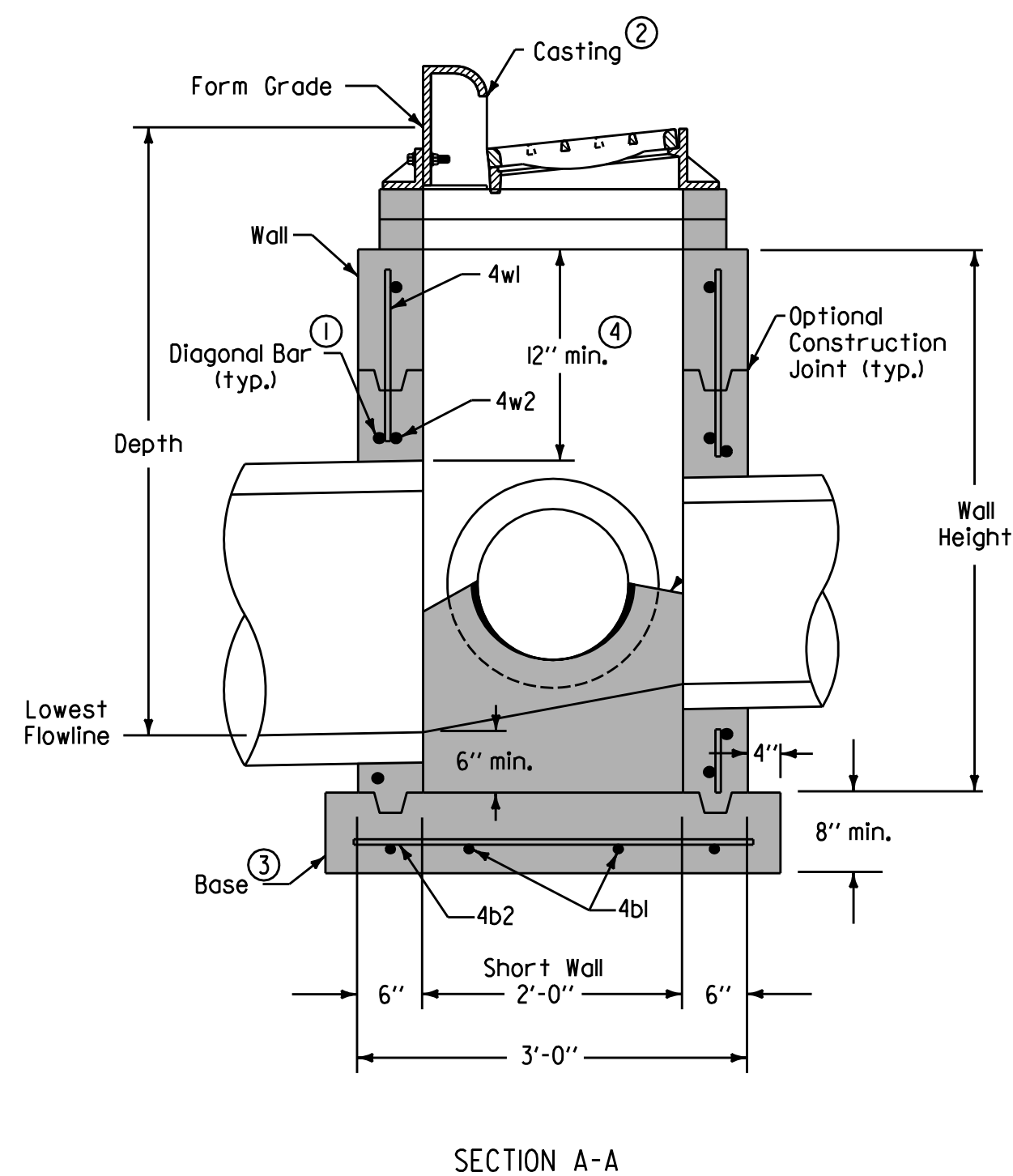
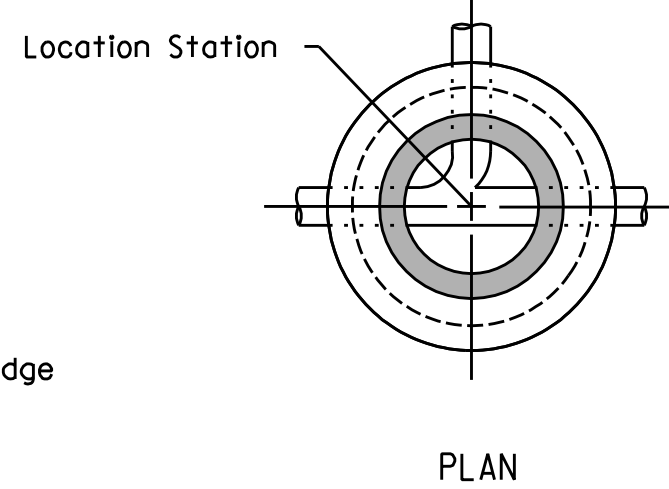


three inches = one foot
one and one half inches = one foot
one inch = one foot
three quarters inch = one foot
one half inch = one foot
three eighths inch = one foot
one quarter inch = one foot
one eighth inch = one foot



1 STORM MANHOLE
N.T.S.
FROM SUDAS STANDARD SW-401

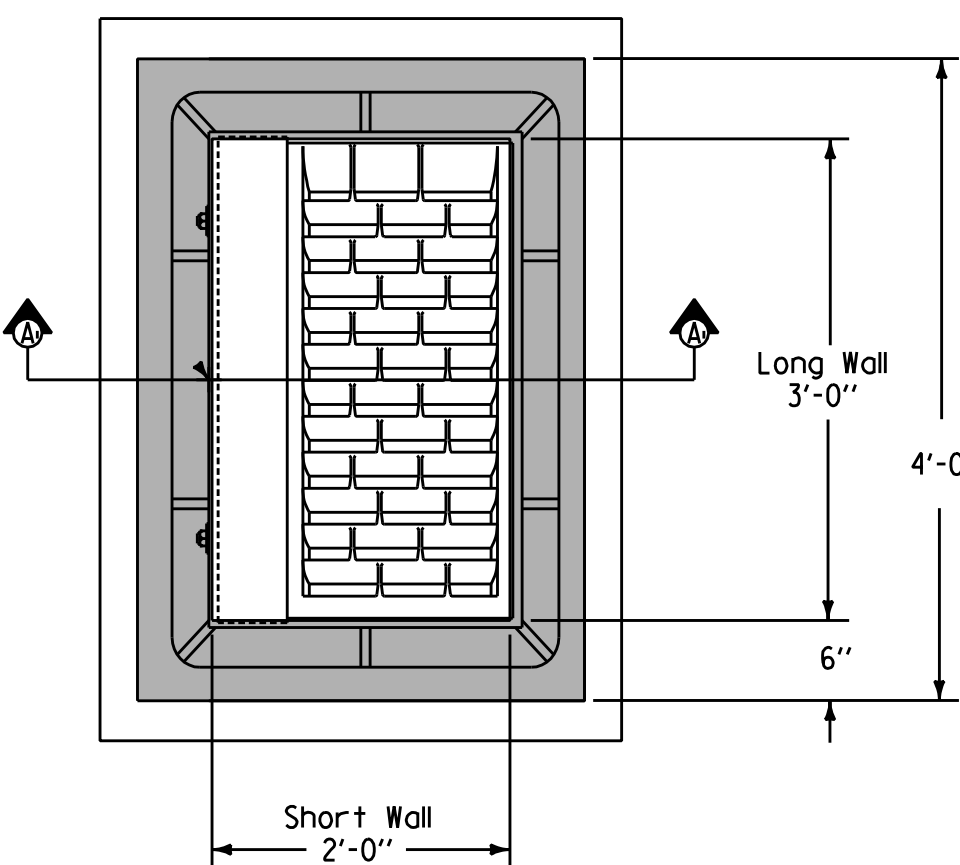
- Cast-in-place base shown. If base is precast integral with bottom riser, the footprint of the base is not required to extend beyond the outer edge of the riser.
- For additional configurations, maintain a minimum of 12 inches of concrete between vertical edges of pipe openings.
- 12 inch minimum riser height above all pipe openings.
PROVIDE MINIMUM 8" CRUSHED STONE BEDDING MATERIAL AS SPECIFIED IN SECTION 312000 IF PRECAST BASE SECTION IS USED.



SECTION A-A

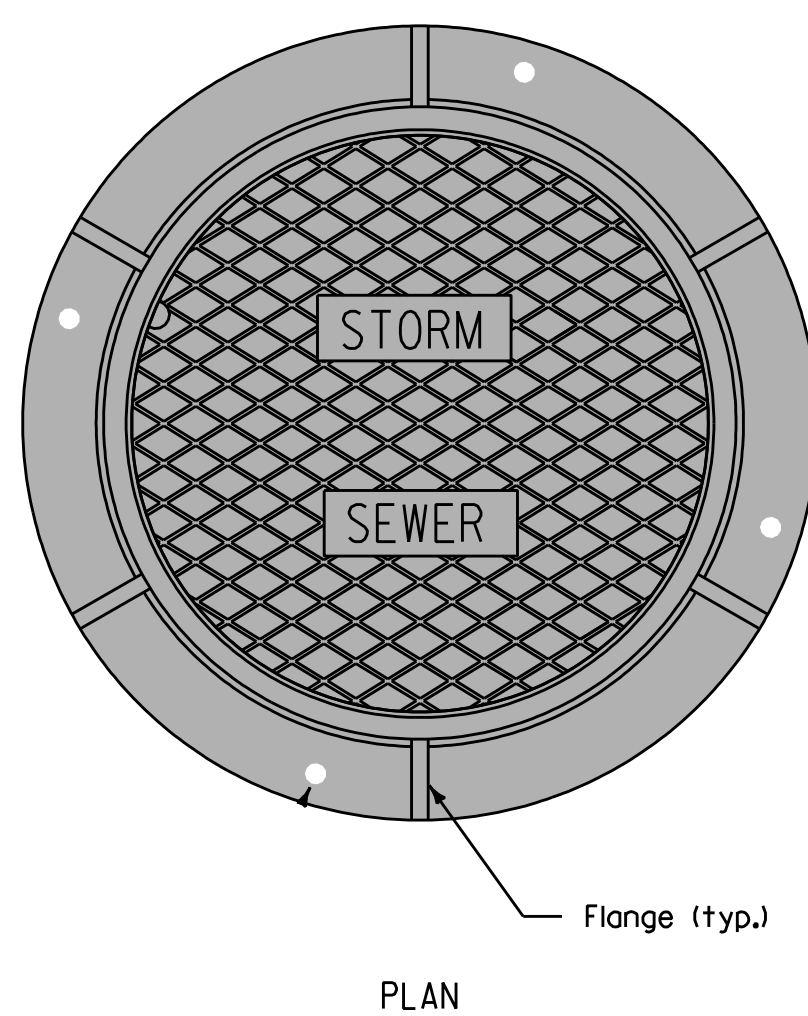
REINFORCING BAR LIST					
Mark	Size	Location	Shape	Length	Count
4w1	4	Walls	---	Wall Height minus 4"	14
4w2	4	Long Walls	---	3'-8"	Varies
4w3	4	Short Walls	---	2'-8"	Varies
4b1	4	Base	---	4'-2"	4
4b2	4	Base	---	3'-2"	5

- Install four #4 diagonal bars at all pipe openings.
- SW-603 Type R - See Detail 6, This Sheet
- Cast-in-place base shown. If base is precast integral with walls, the footprint of the base is not required to extend beyond the outer edge of the walls.
- 12 inch minimum wall height above all pipes.
PROVIDE MINIMUM 8" CRUSHED STONE BEDDING MATERIAL AS SPECIFIED IN SECTION 312000 IF PRECAST BASE SECTION IS USED.

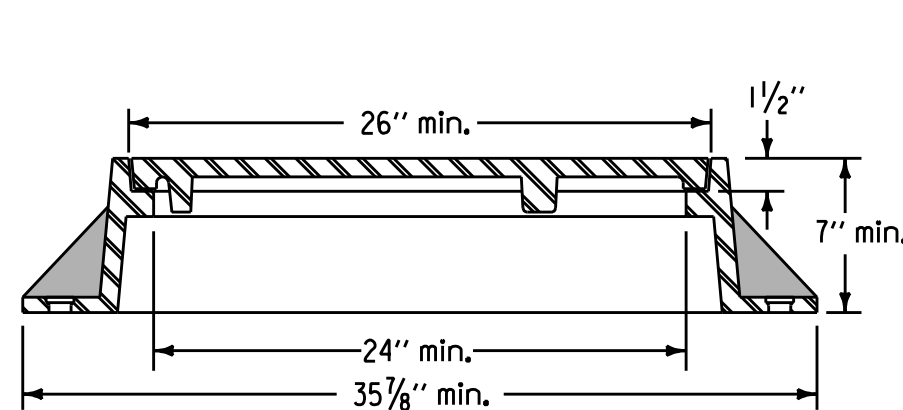


PLAN

2 SINGLE GRATE INTAKE
N.T.S.
FROM SUDAS STANDARD SW-501

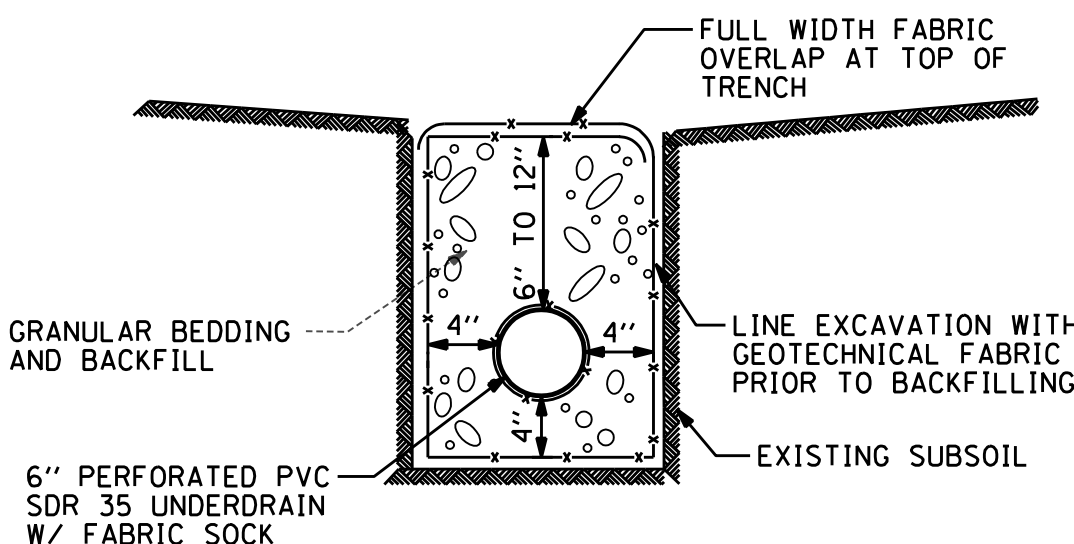


PLAN

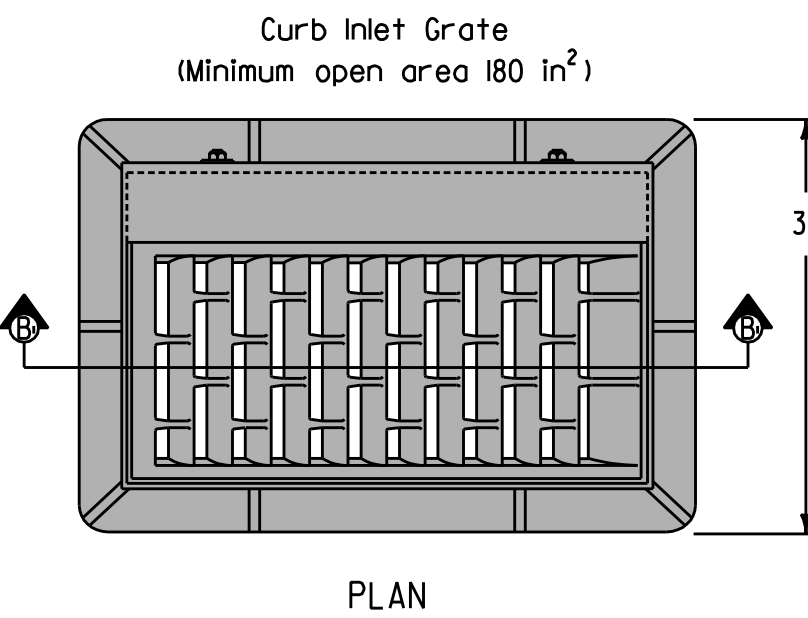


TYPICAL SECTION

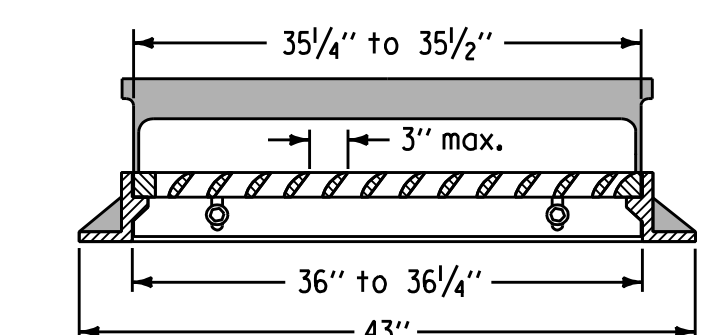
5 CASTINGS FOR STORM SEWER MANHOLES
N.T.S.
FROM SUDAS STANDARD SW-602



6 PIPE UNDERDRAIN
N.T.S.



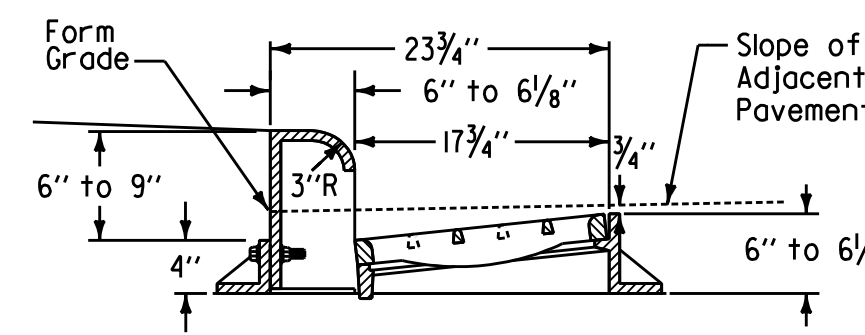
PLAN



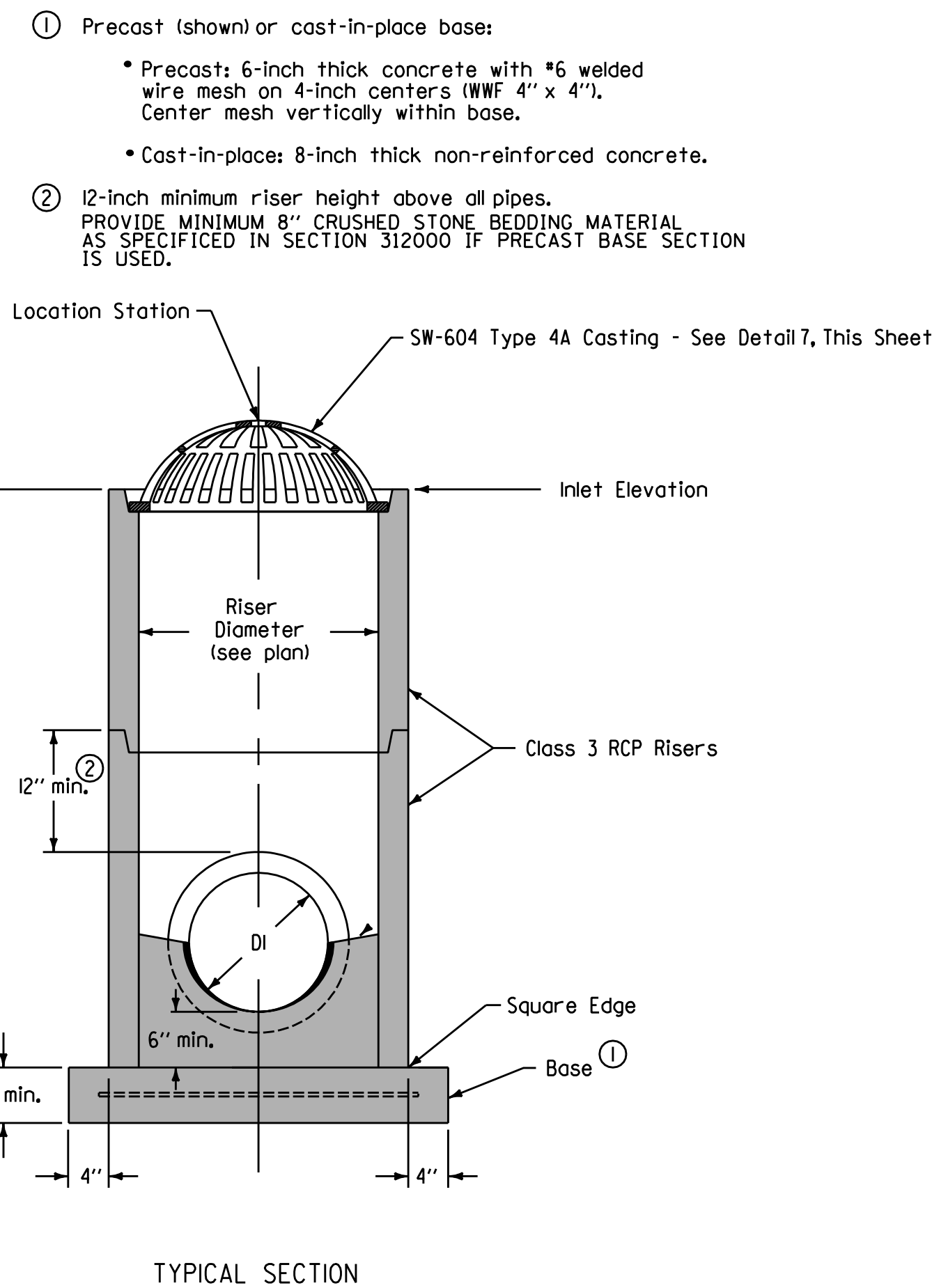
SECTION B-B

6 CASTINGS FOR GRATE INTAKES
N.T.S.
FROM SUDAS STANDARD SW-603, TY R

- Provide bicycle-safe vane-style grate with offset longitudinal ribs between vanes. At low points, grates with vanes facing both directions of flow are allowed.

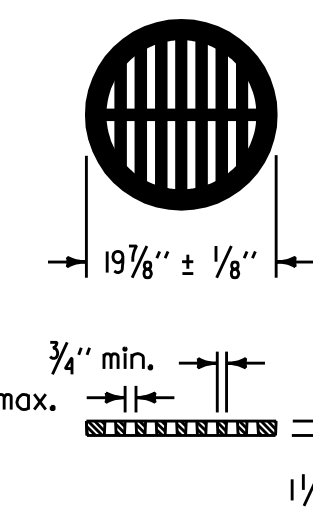


TYPICAL SECTION

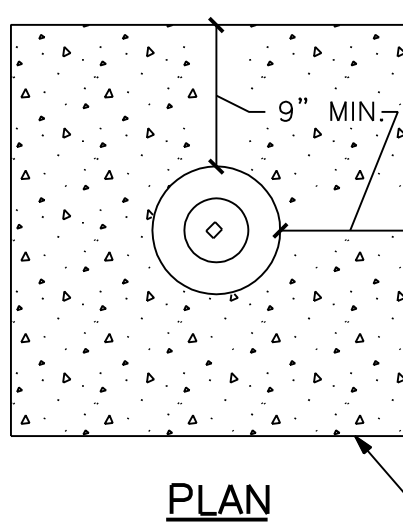


TYPICAL SECTION

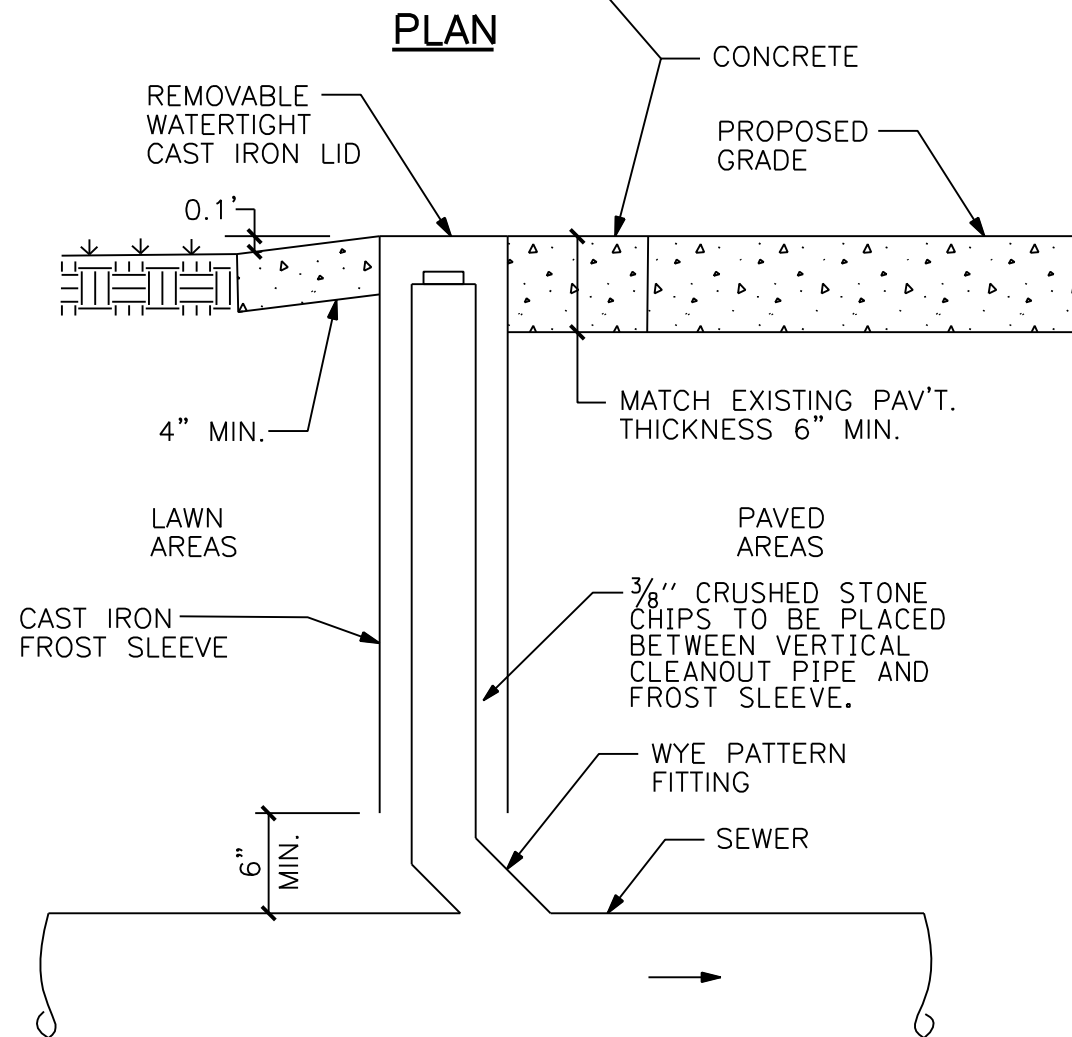
3 CIRCULAR AREA INTAKE
N.T.S.
FROM SUDAS STANDARD SW-512



7 CASTINGS FOR GRATE INTAKES
N.T.S.
FROM SUDAS STANDARD SW-604, TY 4A

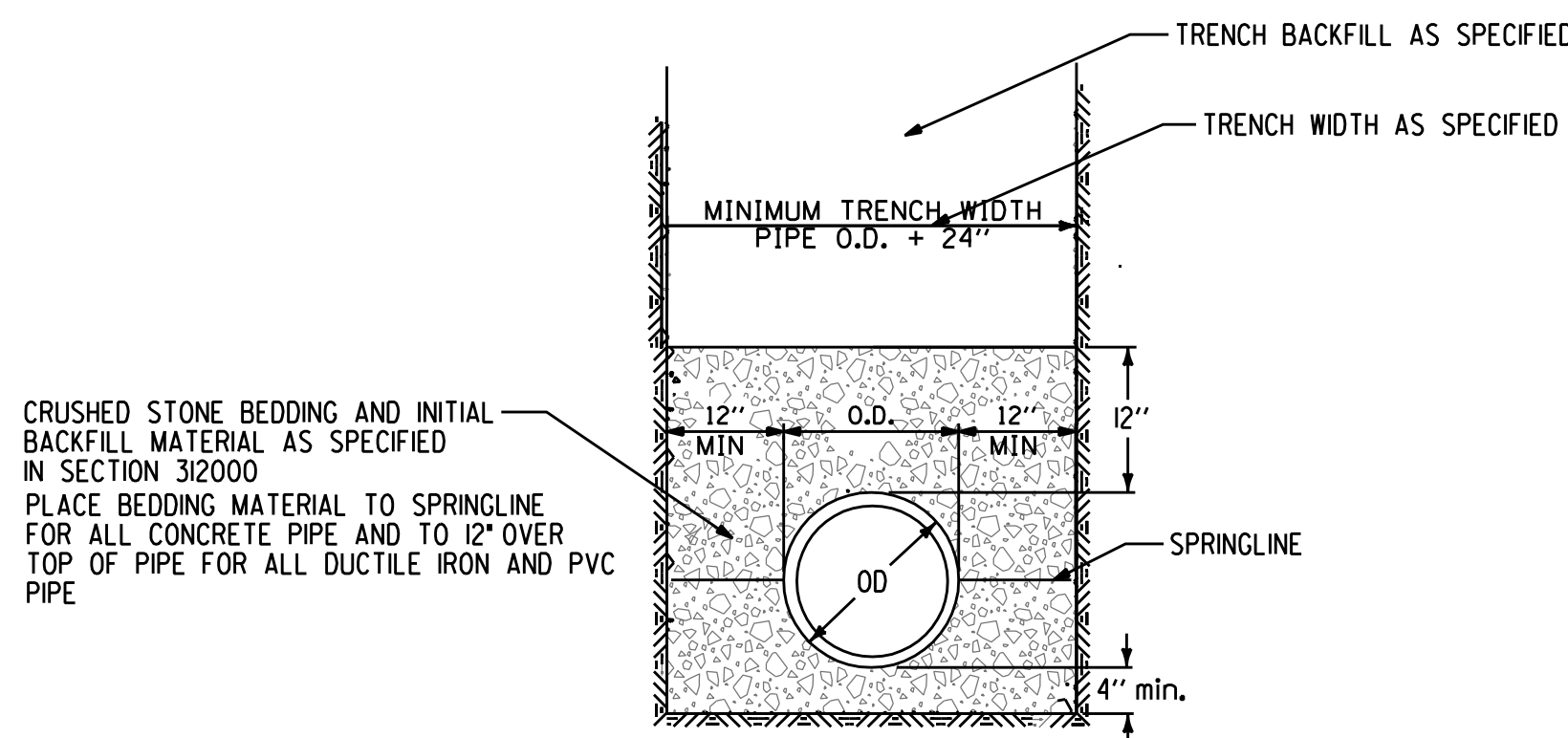


PLAN



SECTION

10 EXTERIOR CLEANOUT
N.T.S.



8 STORM SEWER BEDDING REQUIREMENTS
N.T.S.

Revisions:	Date
FINAL CONSTRUCTION DOCUMENTS	06/10/11
100% REVIEW SUBMISSION (NOT FOR CONSTRUCTION)	04/11/11
75% REVIEW SUBMISSION (NOT FOR CONSTRUCTION)	02/03/11
75% REVIEW SUBMISSION (NOT FOR CONSTRUCTION) - COST ESTIMATE	01/19/11
35% REVIEW SUBMISSION (NOT FOR CONSTRUCTION)	11/22/10

CONSULTANTS/ENGINEERS:

KJWW ENGINEERING CONSULTANTS
Mechanical/Electrical/Plumbing Engineer
623 26TH AVENUE
ROCK ISLAND, ILLINOIS 61201
309.786.0673 Telephone
309.786.5967 Fax

TERRACON
Geotechnical Engineer
2640 12TH STREET SW
CEDAR RAPIDS, IOWA 52404
319.366.8321 Telephone
319.366.0032 Fax

GRAEF
Civil Engineer/Landscape Architect
332 SOUTH MICHIGAN, SUITE 1400
CHICAGO, ILLINOIS 60604-4367
312.582.2020 Telephone
312.939.7014 Fax

WALKER PARKING CONSULTANTS
Structural Engineer
306 DAVIS ROAD
ELGIN, ILLINOIS 60123
847.697.2640 Telephone
847.697.7439 Fax

FAITHFUL + GOULD
Cost Management
222 SOUTH RIVERSIDE PLAZA, SUITE 2240
CHICAGO, ILLINOIS 60606
312.612.6319 Telephone
312.655.9037 Fax

ARCHITECT:

Loebl Schlossman & Hackl
Architecture • Planning • Interiors

233 North Michigan Avenue
Suite 3000
Chicago, Illinois 60601

312.565.1800 Telephone
312.565.5912 Facsimile
www.lshdesign.com

Drawing Title
STORM SEWER DETAILS

Approved: Project Director
Iowa City VA Healthcare System
Department of Veterans Affairs Medical Center

Project Title
400 CAR PARKING GARAGE

Location
IOWA CITY, IA
Date
06/10/2011

Checked
MAY

Drawn
IN

Project Number
636-402

Building Number
43

Drawing Number
43-L14.0
Dwg. 21 of 152

Office of
Construction
and Facilities
Management

Department of
Veterans Affairs