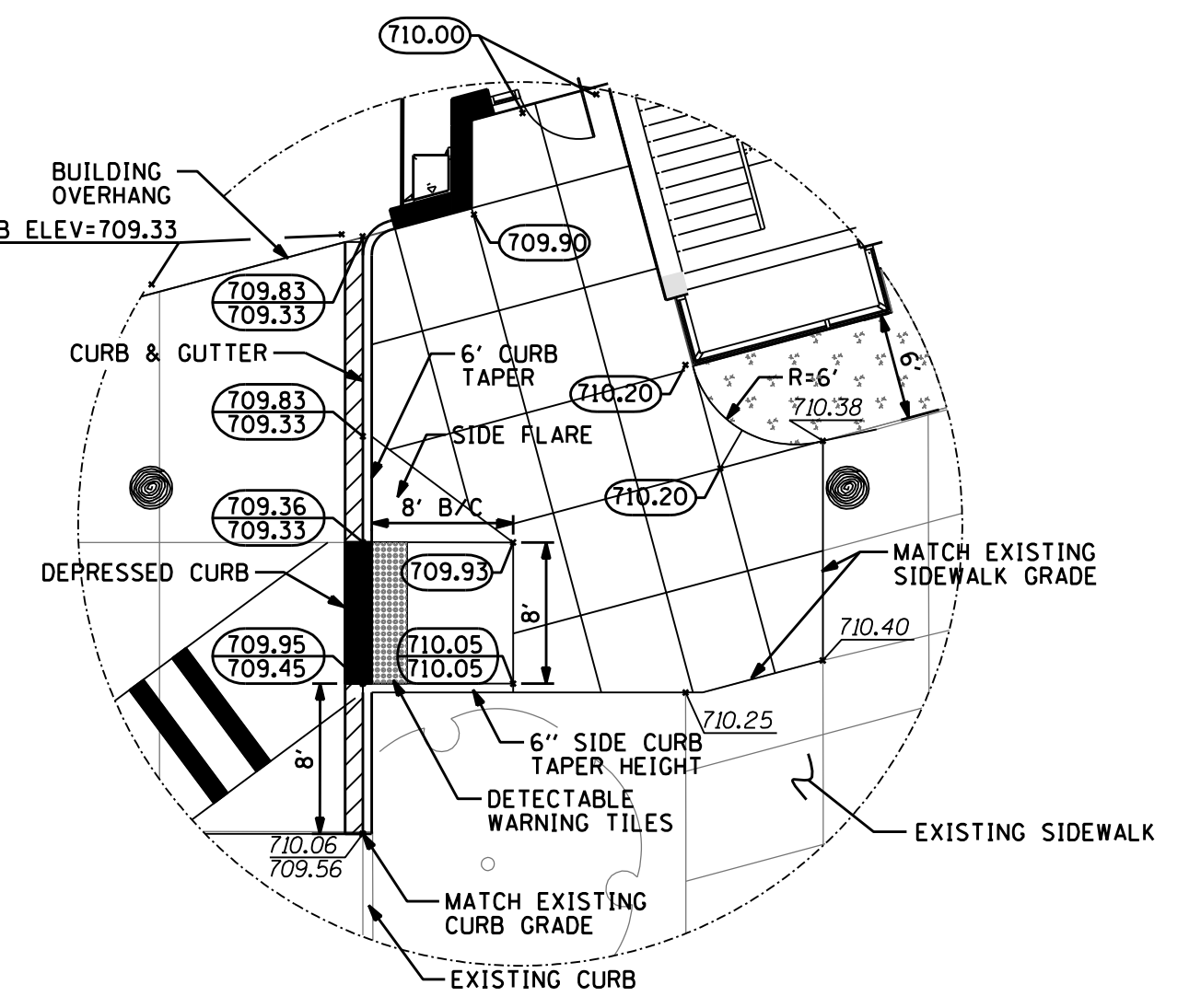
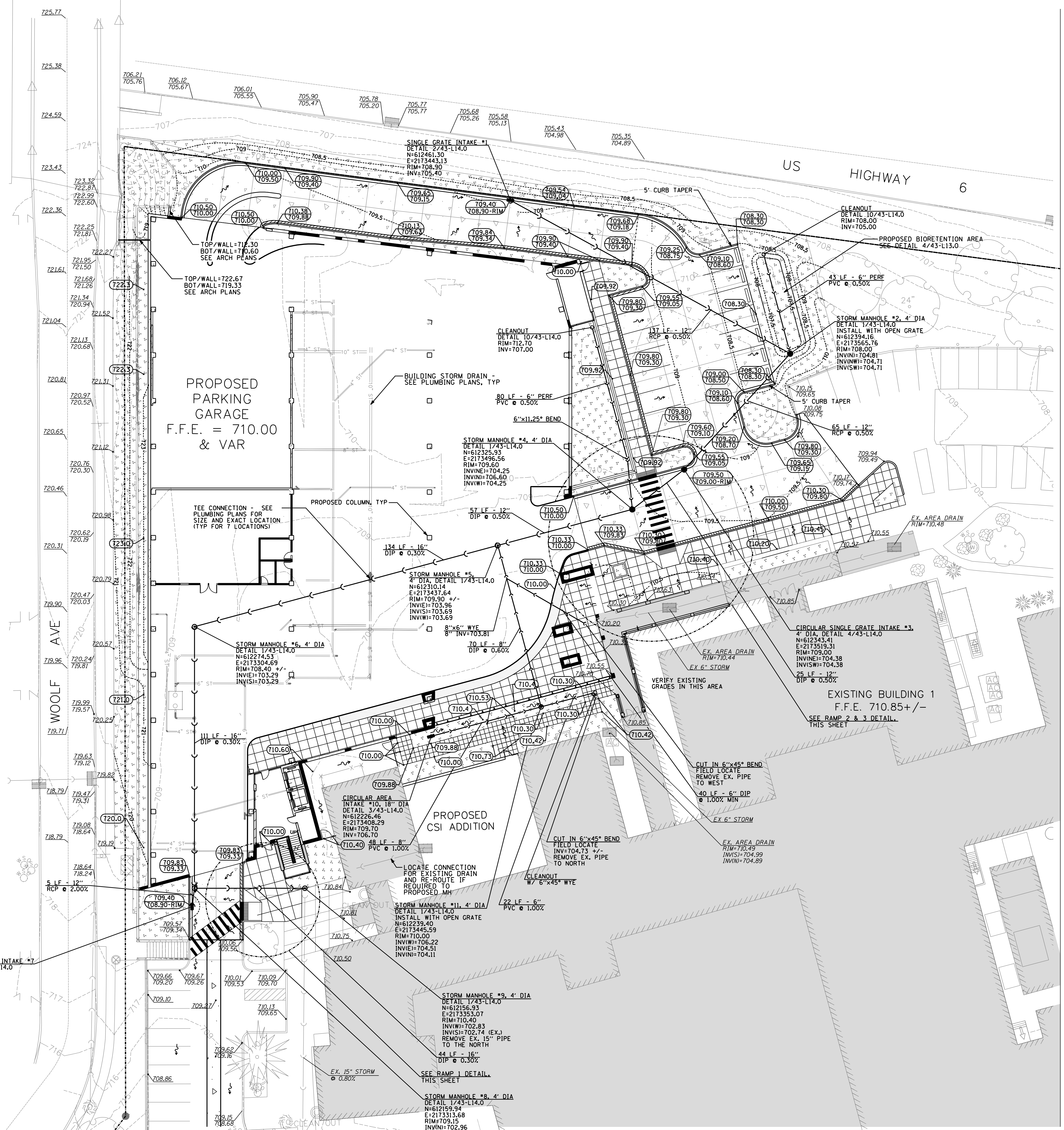
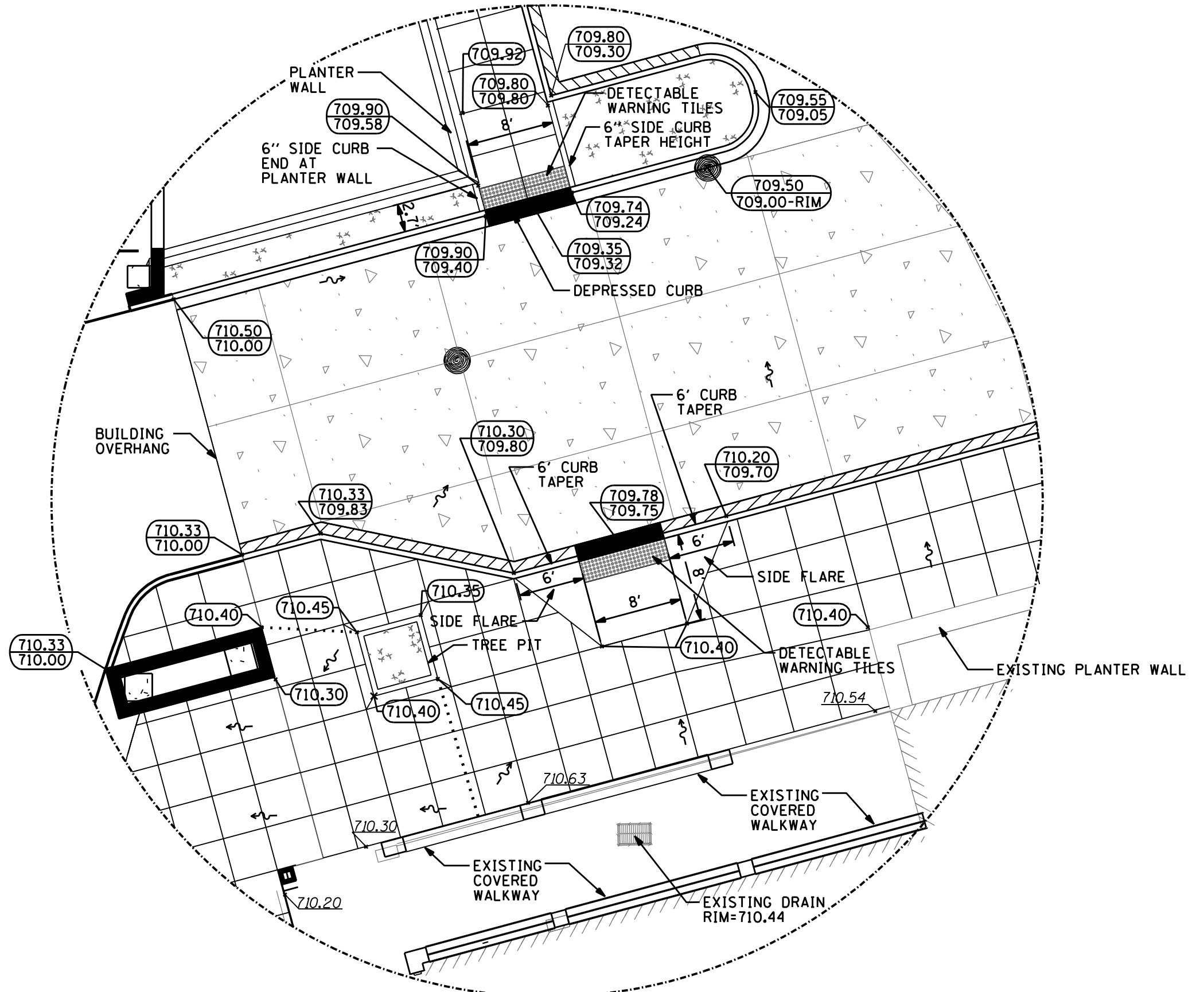


three inches = one foot  
one and one half inches = one foot  
one inch = one foot  
three quarters inch = one foot  
one half inch = one foot  
three eighths inch = one foot  
one quarter inch = one foot  
one eighth inch = one foot



RAMP 1 DETAIL 1"=10'  
SEE DETAILS 10 & 11, SHEET 43-L13.1 FOR R.C. RAMP AND DETECTABLE WARNING REQUIREMENTS



RAMP 2 & 3 DETAIL 1"=10'  
SEE DETAILS 10 & 11, SHEET 43-L13.1 FOR R.C. RAMP AND DETECTABLE WARNING REQUIREMENTS

SHEET LEGEND

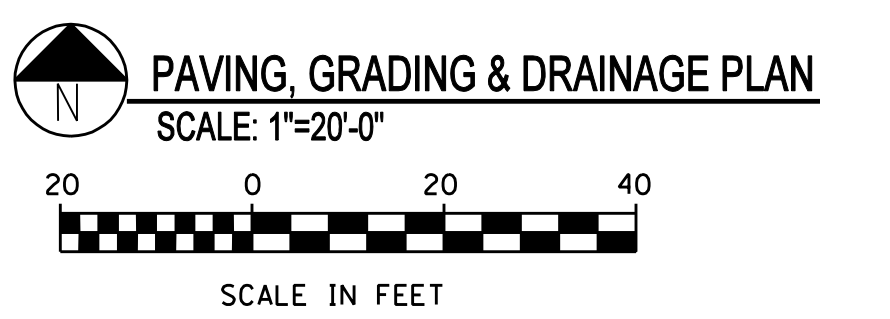
- PROPOSED CURB & GUTTER
- PROPOSED REVERSE PITCH CURB & GUTTER
- PROPOSED DEPRESSED CURB & GUTTER
- PROPOSED SIDEWALK
- PROPOSED CONCRETE PAVEMENT
- EXISTING BUILDING
- PROPOSED LANDSCAPE AREA
- EXISTING CONTOUR
- PROPOSED CONTOUR
- EXISTING TOP/CURB ELEV.
- EXISTING FLOW LINE ELEV.
- PROPOSED TOP/CURB ELEV.
- PROPOSED FLOW LINE ELEV.
- OVERLAND FLOW PATH
- EXISTING STORM SEWER
- PROPOSED STORM SEWER
- PROPOSED BUILDING STORM DRAIN (SEE PLUMBING PLANS)
- PROPOSED INLET
- PROPOSED CATCH BASIN
- PROPOSED MANHOLE

SHEET NOTES:

- ALL ELEVATIONS INDICATED ARE WITH RESPECT TO THE USGS DATUM.
- VERIFY ALL EXISTING ELEVATIONS AND LOCATIONS IN FIELD PRIOR TO CONSTRUCTION. NOTIFY PROJECT MANAGER OF ANY DISCREPANCIES BEFORE PROCEEDING.
- ELEVATIONS ARE TO FACE OF BUILDING, FACE OF CURB, OR PROPERTY LINE, AND TO CENTER OF STRUCTURE, UNLESS NOTED OTHERWISE.
- SEE SHEETS 43-L10.0 AND 43-L10.1 FOR ADDITIONAL UTILITY INFORMATION, INCLUDING UTILITY CROSSING SCHEDULES.
- COORDINATE INSTALLATION OF STORM SEWER WITH PLUMBING PLANS FOR REQUIRED TEE SIZES, LOCATIONS, AND INVERTS AND ANY ADDITIONAL FITTINGS WHICH MAY BE REQUIRED TO MAKE CONNECTIONS.

BENCHMARKS:

SEE TOPOGRAPHIC SURVEY FOR BENCHMARK LOCATIONS AND INFORMATION



CONSULTANTS/ENGINEERS:

<b>KJWW ENGINEERING CONSULTANTS</b> Mechanical/Electrical/Plumbing Engineer 823 26TH AVENUE ROCK ISLAND, ILLINOIS 61201 309.788.0673 Telephone 309.786.5967 Fax	<b>TERRACON</b> Geotechnical Engineer 2640 12TH STREET SW CEDAR RAPIDS, IOWA 52404 319.366.8321 Telephone 319.366.0032 Fax	<b>GRAEF</b> Civil Engineer/Landscape Architect 322 SOUTH MICHIGAN, SUITE 1400 CHICAGO, ILLINOIS 60604-4367 312.582.2020 Telephone 312.939.7014 Fax	<b>WALKER PARKING CONSULTANTS</b> Structural Engineer 505 DAVIS ROAD ELGIN, ILLINOIS 60123 847.697.2640 Telephone 847.697.7439 Fax	<b>FAITHFUL+GOULD</b> Cost Management 222 SOUTH RIVERSIDE PLAZA, SUITE 2240 CHICAGO, ILLINOIS 60606 312.655.9037 Telephone 312.655.9037 Fax
--	---	--	---	--

ARCHITECT:

**Loebl Schlossman & Hackl**  
Architecture • Planning • Interiors  
233 North Michigan Avenue  
Suite 3000  
Chicago, Illinois 60601  
312.565.1800 Telephone  
312.565.5912 Facsimile  
www.lshdesign.com

Drawing Title  
**PAVING, GRADING, AND DRAINAGE PLAN**  
Approved: Project Director  
**Iowa City VA Healthcare System**  
Department of Veterans Affairs Medical Center

Project Title  
**400 CAR PARKING GARAGE**  
Location  
**IOWA CITY, IA**  
Date  
**06/10/2011**  
Checked  
**MAY**  
Drawn  
**IN**  
Project Number  
**636-402**  
Building Number  
**43**  
Drawing Number  
**43-L9**  
Dwg. 14 of 152

Office of  
Construction  
and Facilities  
Management  
Department of  
Veterans Affairs