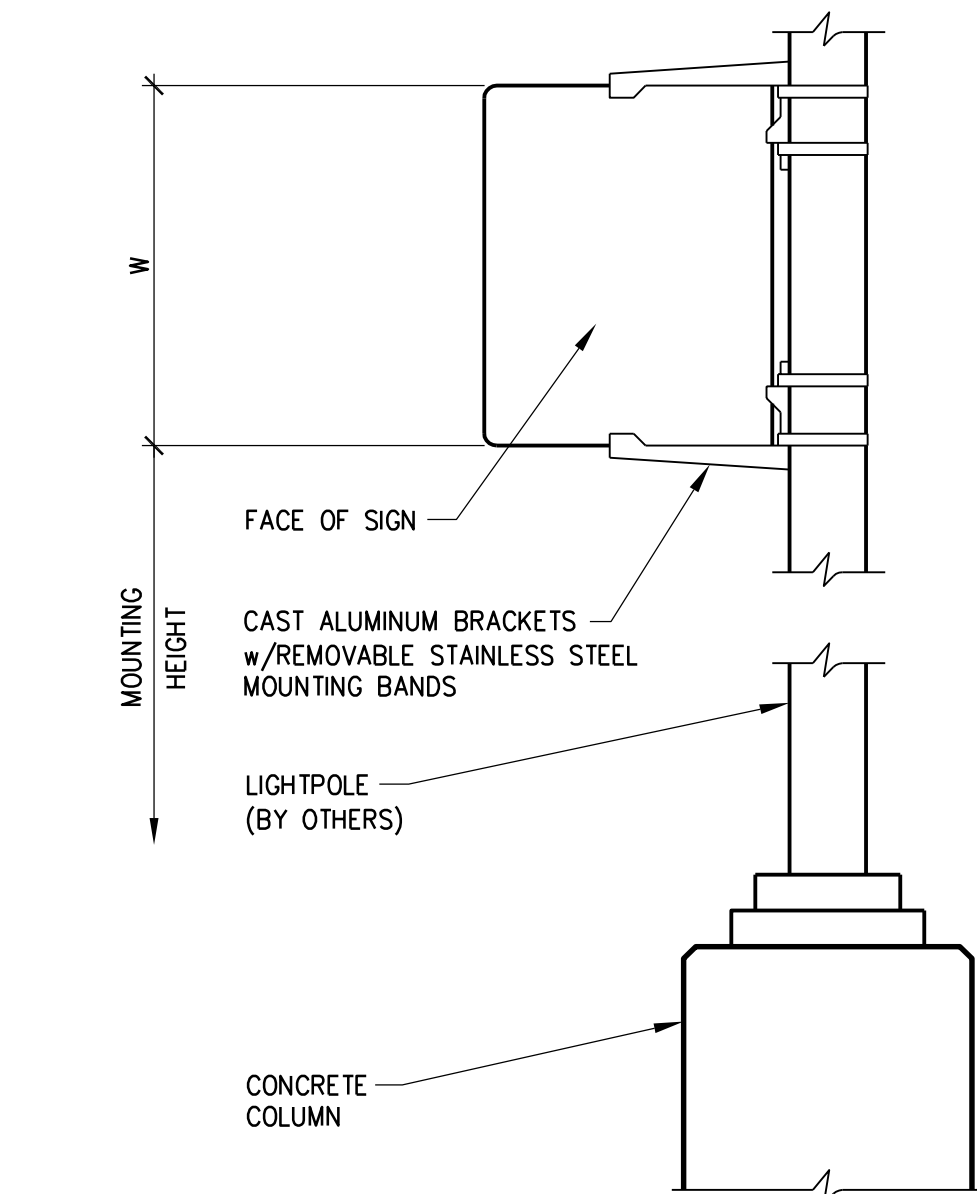
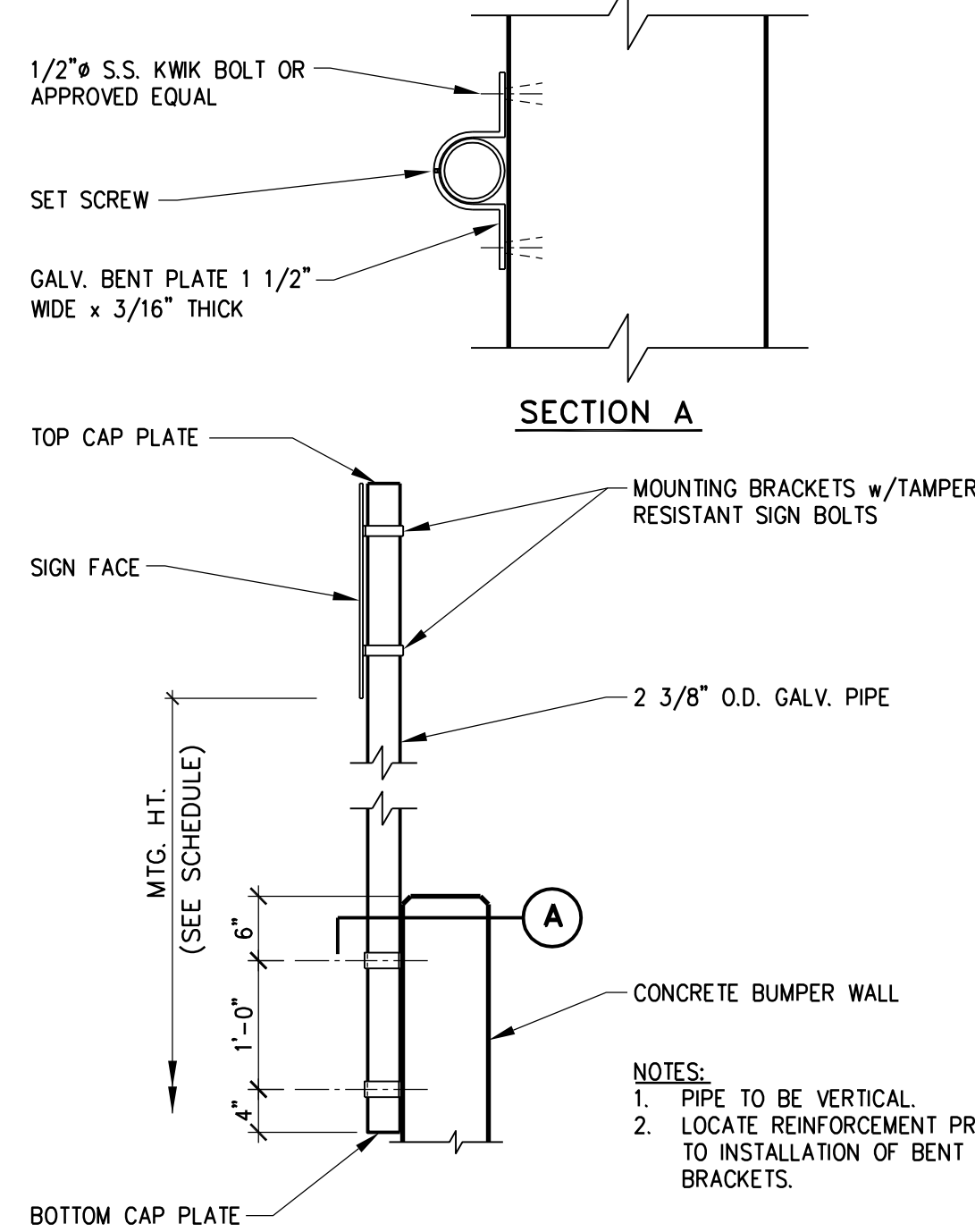


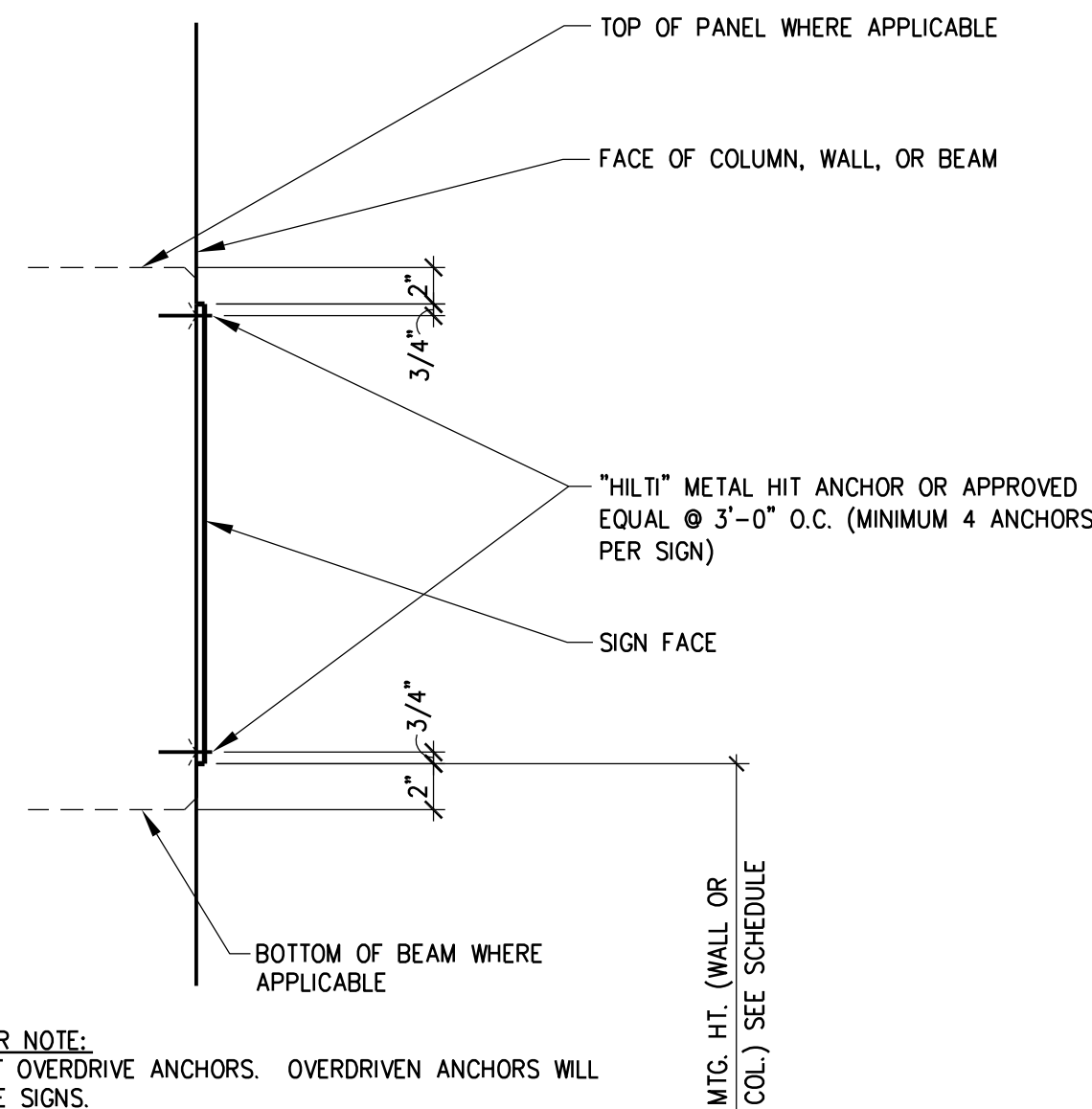
one eighth inch = one foot  
one quarter inch = one foot  
one half inch = one foot  
three eighths inch = one foot  
one inch = one foot  
one and one half inches = one foot  
two inches = one foot  
three inches = one foot  
four inches = one foot  
five inches = one foot  
six inches = one foot  
seven inches = one foot  
eight inches = one foot  
nine inches = one foot  
ten inches = one foot  
eleven inches = one foot  
twelve inches = one foot  
thirteen inches = one foot  
fourteen inches = one foot  
fifteen inches = one foot  
sixteen inches = one foot  
seventeen inches = one foot  
eighteen inches = one foot  
nineteen inches = one foot  
twenty inches = one foot  
twenty one inches = one foot  
twenty two inches = one foot  
twenty three inches = one foot  
twenty four inches = one foot  
twenty five inches = one foot  
twenty six inches = one foot  
twenty seven inches = one foot  
twenty eight inches = one foot  
twenty nine inches = one foot  
thirty inches = one foot  
thirty one inches = one foot  
thirty two inches = one foot  
thirty three inches = one foot  
thirty four inches = one foot  
thirty five inches = one foot  
thirty six inches = one foot  
thirty seven inches = one foot  
thirty eight inches = one foot  
thirty nine inches = one foot  
forty inches = one foot  
forty one inches = one foot  
forty two inches = one foot  
forty three inches = one foot  
forty four inches = one foot  
forty five inches = one foot  
forty six inches = one foot  
forty seven inches = one foot  
forty eight inches = one foot  
forty nine inches = one foot  
fifty inches = one foot  
fifty one inches = one foot  
fifty two inches = one foot  
fifty three inches = one foot  
fifty four inches = one foot  
fifty five inches = one foot  
fifty six inches = one foot  
fifty seven inches = one foot  
fifty eight inches = one foot  
fifty nine inches = one foot  
sixty inches = one foot  
sixty one inches = one foot  
sixty two inches = one foot  
sixty three inches = one foot  
sixty four inches = one foot  
sixty five inches = one foot  
sixty six inches = one foot  
sixty seven inches = one foot  
sixty eight inches = one foot  
sixty nine inches = one foot  
seventy inches = one foot  
seventy one inches = one foot  
seventy two inches = one foot  
seventy three inches = one foot  
seventy four inches = one foot  
seventy five inches = one foot  
seventy six inches = one foot  
seventy seven inches = one foot  
seventy eight inches = one foot  
seventy nine inches = one foot  
eighty inches = one foot  
eighty one inches = one foot  
eighty two inches = one foot  
eighty three inches = one foot  
eighty four inches = one foot  
eighty five inches = one foot  
eighty six inches = one foot  
eighty seven inches = one foot  
eighty eight inches = one foot  
eighty nine inches = one foot  
ninety inches = one foot  
ninety one inches = one foot  
ninety two inches = one foot  
ninety three inches = one foot  
ninety four inches = one foot  
ninety five inches = one foot  
ninety six inches = one foot  
ninety seven inches = one foot  
ninety eight inches = one foot  
ninety nine inches = one foot  
one hundred inches = one foot



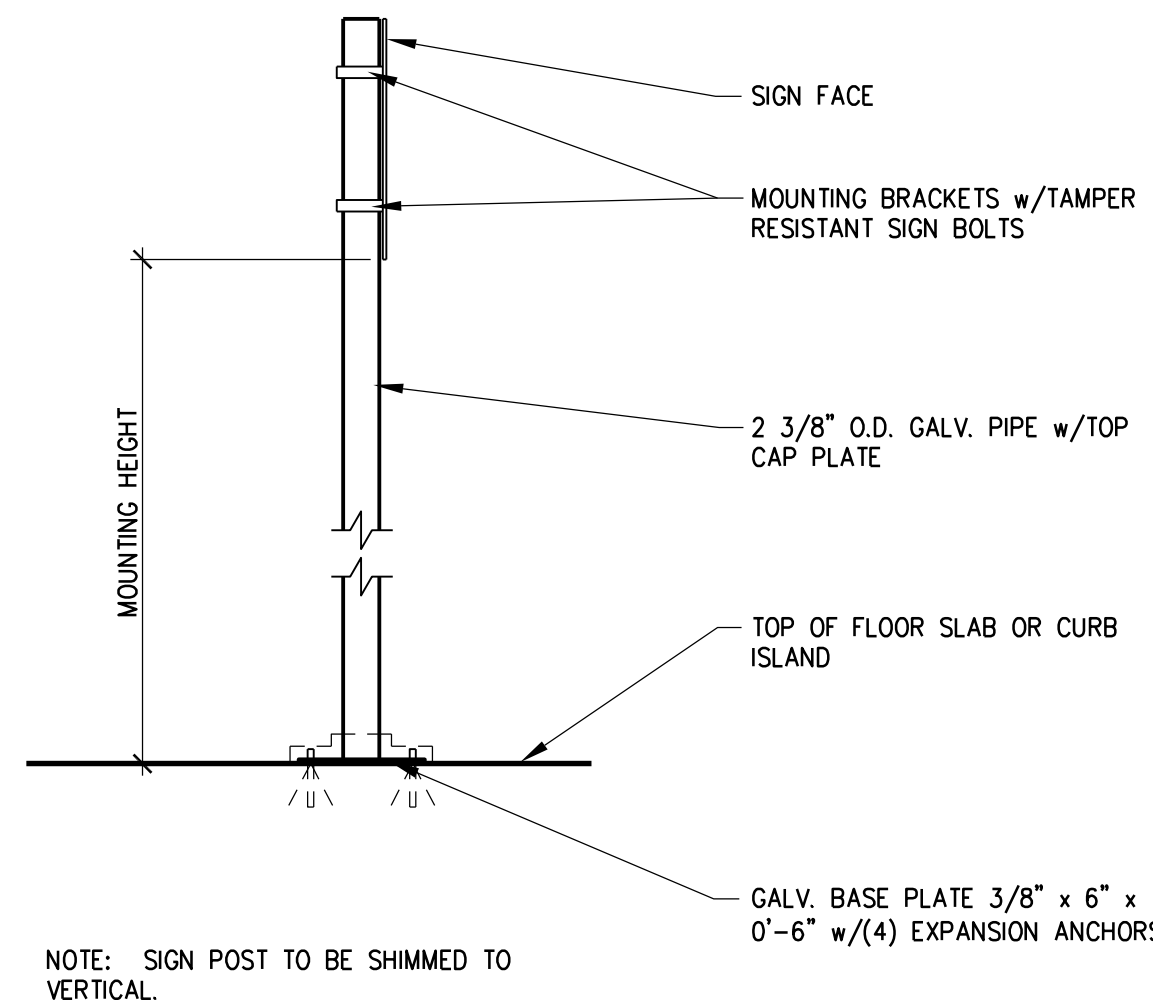
B3 SIGN MOUNTING DETAIL



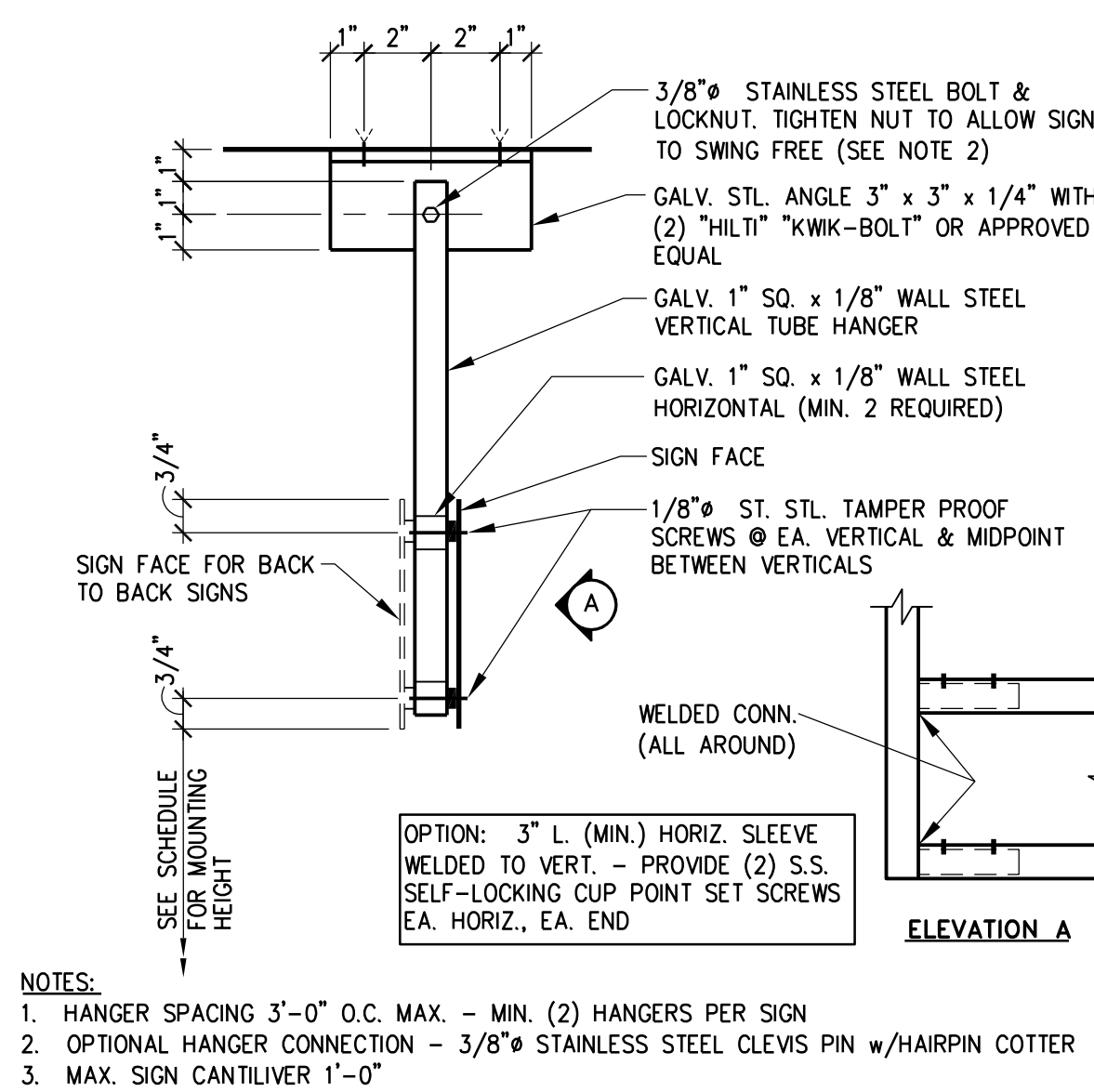
B5 SIGN MOUNTING DETAIL



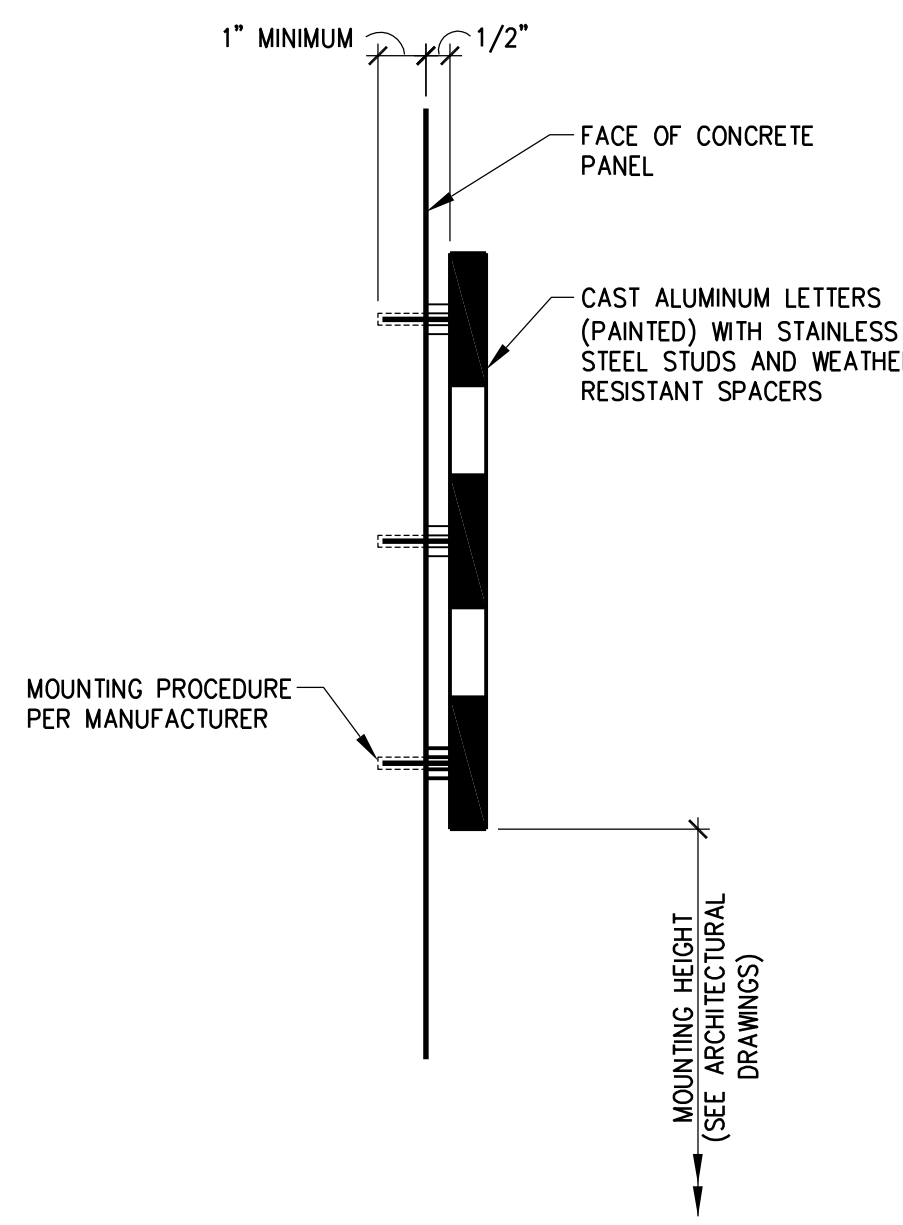
B7 SIGN MOUNTING DETAIL



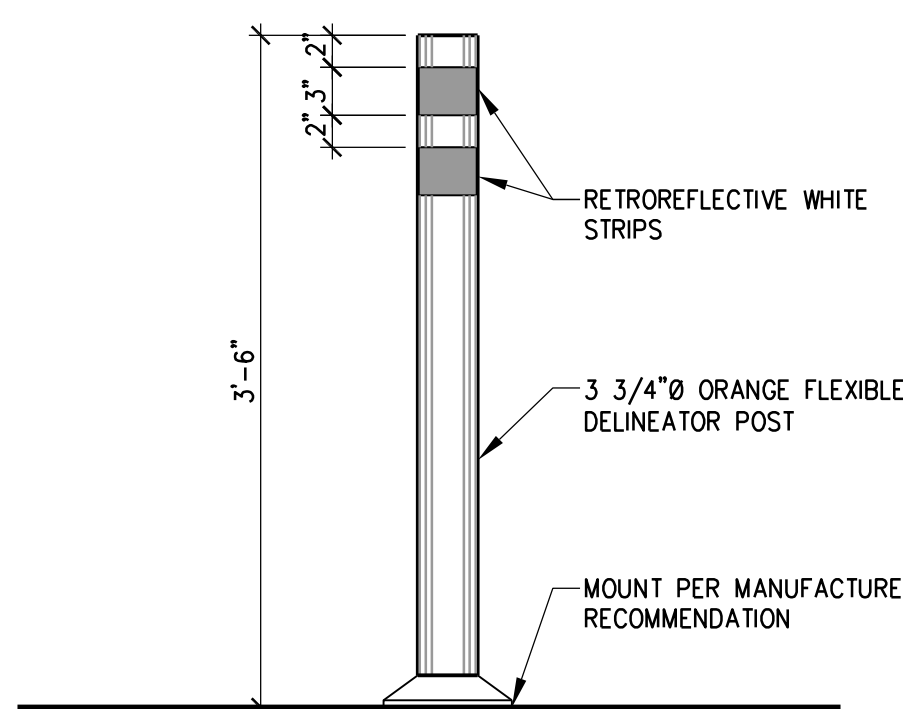
D3 SIGN MOUNTING DETAIL



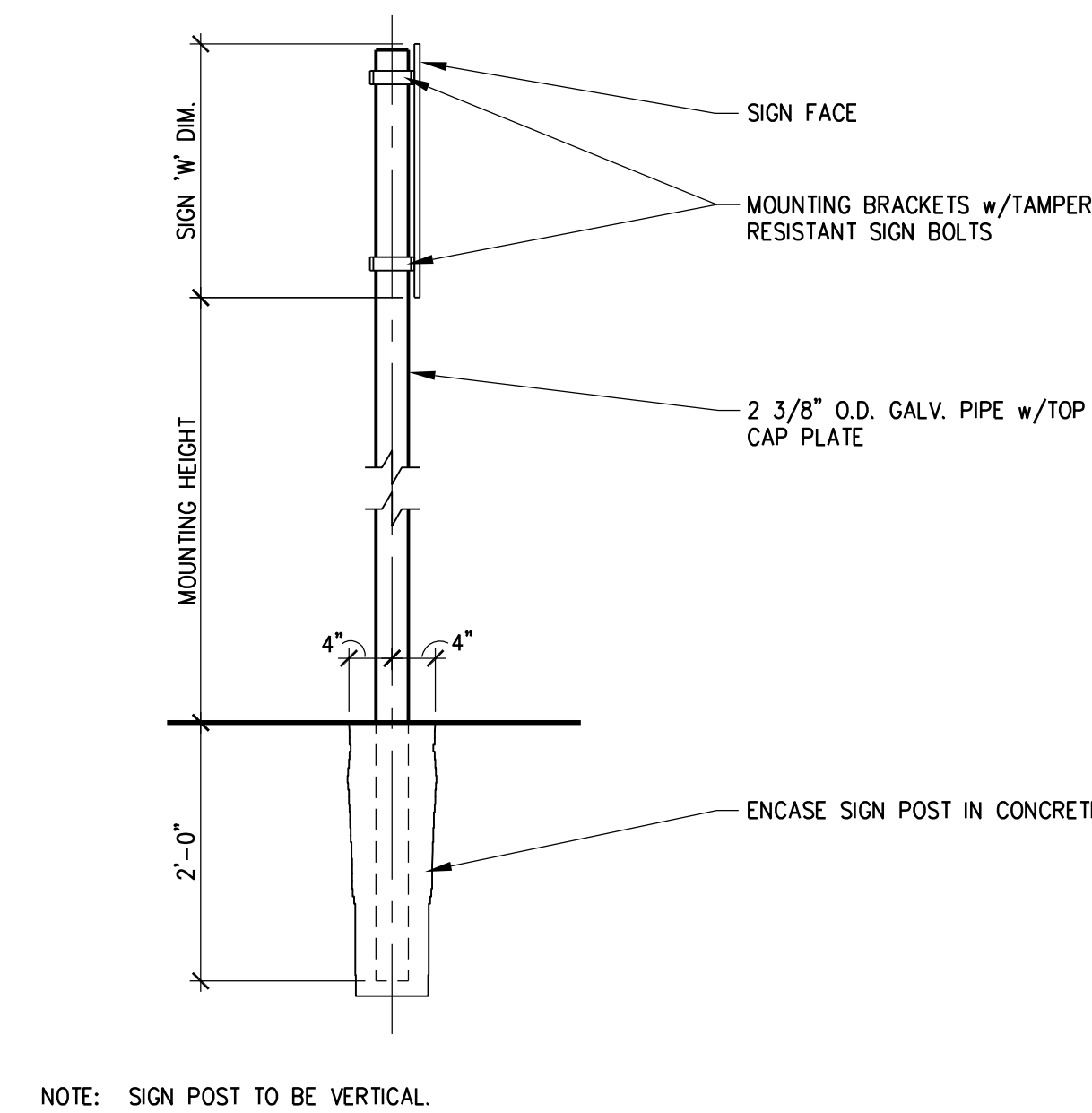
D5 STEEL SIGN MOUNTING DETAIL



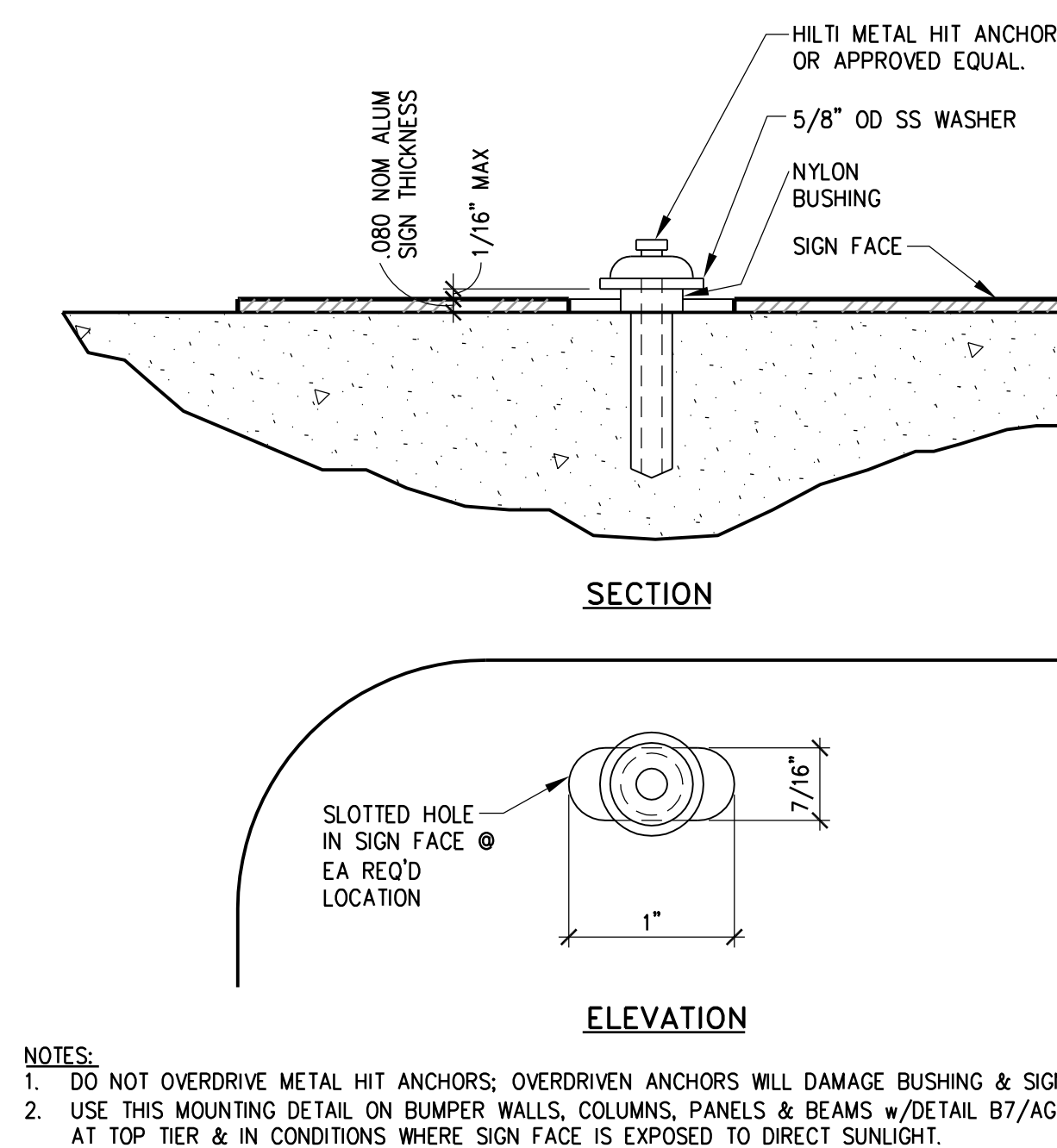
D7 SIGN MOUNTING DETAIL



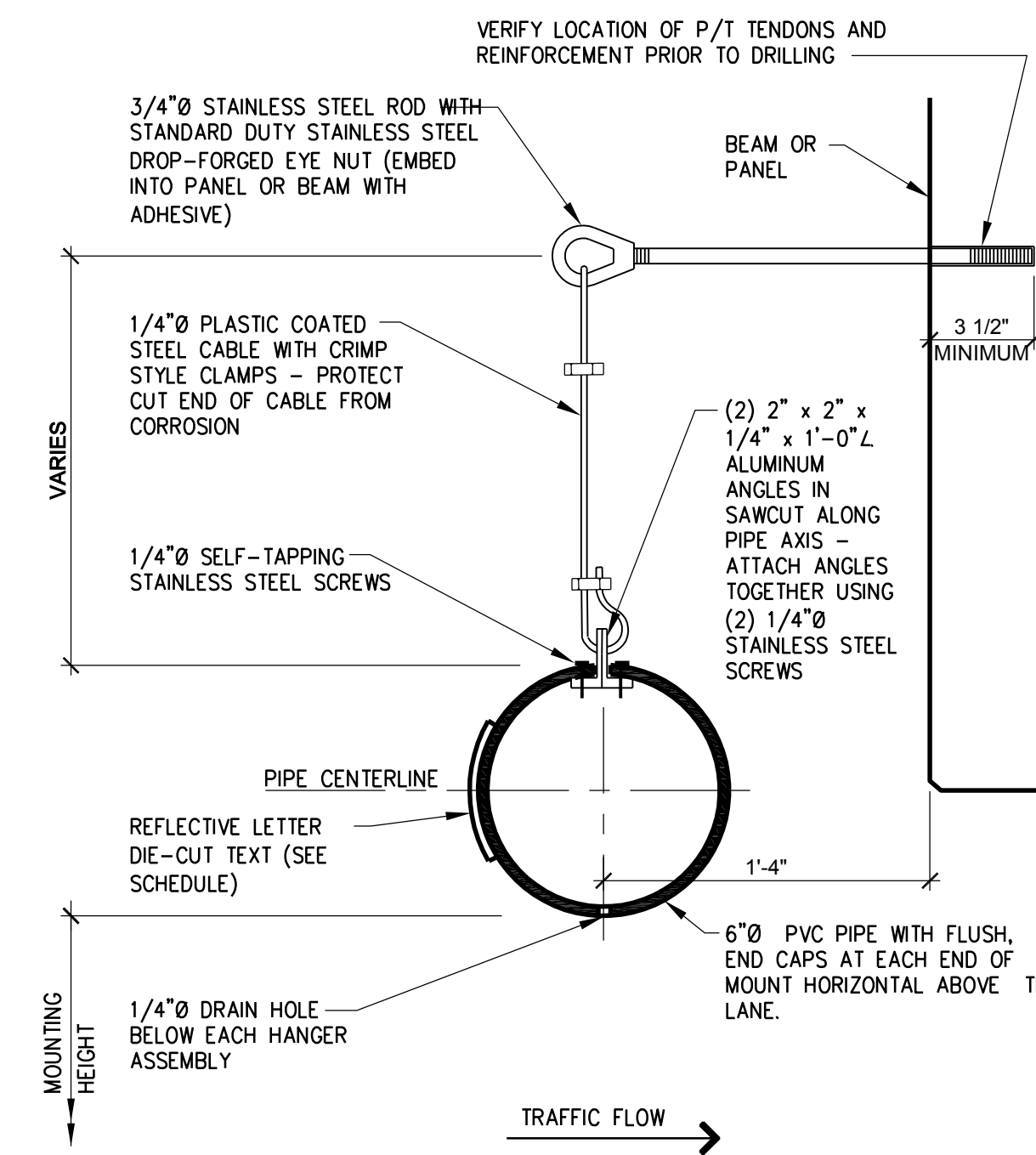
F1 DELINEATOR POST



F3 SIGN MOUNTING DETAIL



F5 SIGN MOUNTING DETAIL



F7 SIGN MOUNTING DETAIL

		CONSULTANTS/ENGINEERS:					ARCHITECT:		Drawing Title		Project Title		Project Number		Office of Construction and Facilities Management  Department of Veterans Affairs
							Loebl Schlossman & Hackl		SIGN MOUNTING DETAILS		400 CAR PARKING GARAGE		636-402		
							Architecture • Planning • Interiors		Approved: Project Director		IOWA CITY, IA		43		
							312.565-1800 Telephone 312.565-5912 Facsimile www.lshdesign.com		Iowa City VA Healthcare System Department of Veterans Affairs Medical Center		Location		Drawing Number		
											Date		Checked		
											06/10/2011		BFN		
													Drawn		
													MJK		
													AG-701		
													Dwg. 78 of 152		

FINAL CONSTRUCTION DOCUMENTS	06/10/11
100% REVIEW SUBMISSION (NOT FOR CONSTRUCTION)	04/11/11
75% REVIEW SUBMISSION (NOT FOR CONSTRUCTION)	02/03/11
75% REVIEW SUBMISSION (NOT FOR CONSTRUCTION) - COST ESTIMATE	01/19/11
55% REVIEW SUBMISSION (NOT FOR CONSTRUCTION)	11/22/10
Revisions:	Date

KJMW ENGINEERING CONSULTANTS Mechanical/Electrical/Plumbing Engineer	TERRACON Geotechnical Engineer	GRAF Civil Engineer/Landscape Architect	WALKER PARKING CONSULTANTS Structural Engineer	FAITHFUL+GOULD Cost Management
623 26TH AVENUE ROCK ISLAND, ILLINOIS 61201 309.788.0673 Telephone 309.786-5967 Fax	2640 12TH STREET SW CEDAR RAPIDS, IOWA 52404 319.366.8321 Telephone 319.366.0032 Fax	332 SOUTH MICHIGAN, SUITE 1400 CHICAGO, ILLINOIS 60604-4367 312.582.2020 Telephone 312.939.7014 Fax	305 DAVIS ROAD ELGIN, ILLINOIS 60123 847.697.2640 Telephone 847.697.7439 Fax	222 SOUTH RIVERSIDE PLAZA, SUITE 2240 CHICAGO, ILLINOIS 60606 312.612.6319 Telephone 312.655.9037 Fax