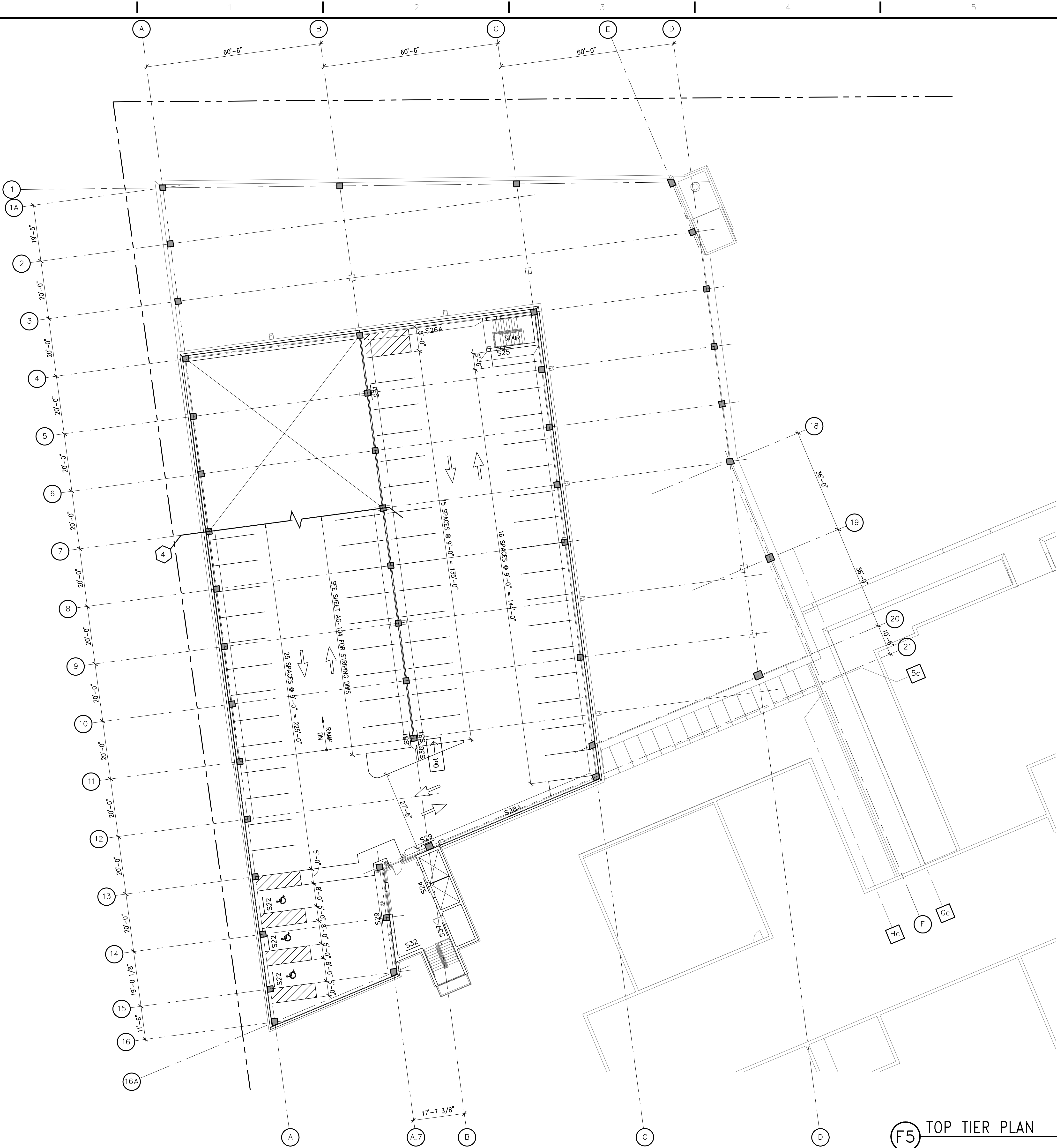
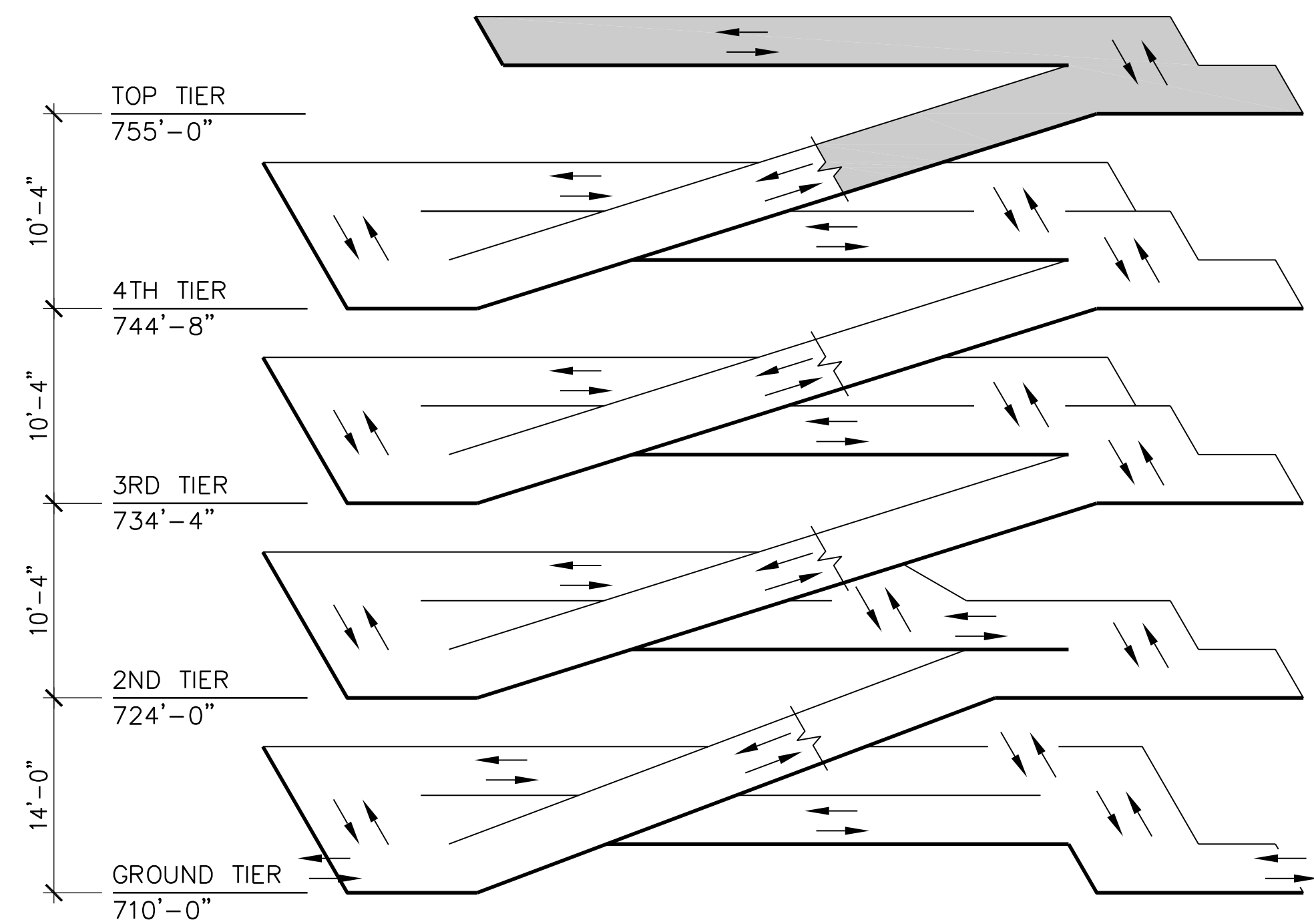
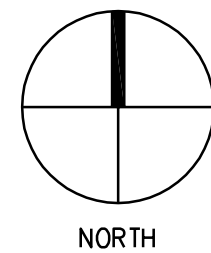


one eighth inch = one foot  
one quarter inch = one foot  
three eighths inch = one foot  
one half inch = one foot  
three quarters inch = one foot  
one inch = one foot  
one and one half inches = one foot  
two inches = one foot  
three inches = one foot



F5 TOP TIER PLAN



ISOMETRIC

**SIGN KEY**  
(TYPICAL ALL TIERS)

MARK  
(SEE SIGN SCHEDULE)

FACE OF SIGN

NOTE:  
SEE SHEETS AG-601, AG-602 AND AG-603  
FOR SIGN SCHEDULE & GRAPHICS DETAILS.  
(SEE SIGN SCHEDULE FOR TEXT OF ALL SIGNS  
NOT ILLUSTRATED ON THIS SHEET)

		CONSULTANTS/ENGINEERS:				ARCHITECT:		Drawing Title		Project Title		Project Number		Office of Construction and Facilities Management
		KJWW ENGINEERING CONSULTANTS Mechanical/Electrical/Plumbing Engineer		TERRACON Geotechnical Engineer		GRAEF Civil Engineer/Landscape Architect		WALKER PARKING CONSULTANTS Structural Engineer		FAITHFUL + GOULD Cost Management		636-402		
		623 26TH AVENUE ROCK ISLAND, ILLINOIS 61201		2640 12TH STREET SW CEDAR RAPIDS, IOWA 52404		332 SOUTH MICHIGAN, SUITE 1400 CHICAGO, ILLINOIS 60604-4367		505 DAVIS ROAD ELGIN, ILLINOIS 60123		222 SOUTH RIVERSIDE PLAZA, SUITE 2240 CHICAGO, ILLINOIS 60606		Building Number 43		
FINAL CONSTRUCTION DOCUMENTS		06/10/11		309.786.5931 Telephone 309.786.5967 Fax		319.366.6321 Telephone 319.366.0032 Fax		312.565.1800 Telephone 312.565.5912 Telephone 847.697.7439 Fax		TOP TIER PLAN		400 CAR PARKING GARAGE		
100% REVIEW SUBMISSION (NOT FOR CONSTRUCTION)		04/11/11						312.565.1800 Telephone 312.565.5912 Facsimile www.lshdesign.com		Approved: Project Director		Location IOWA CITY, IA		
75% REVIEW SUBMISSION (NOT FOR CONSTRUCTION)		02/03/11								Iowa City VA Healthcare System Department of Veterans Affairs Medical Center		Drawing Number AG-105		
75% REVIEW SUBMISSION (NOT FOR CONSTRUCTION) - COST ESTIMATE		01/19/11										Dwg. 74 of 152		
35% REVIEW SUBMISSION (NOT FOR CONSTRUCTION)		11/22/10												
Revisions:		Date												