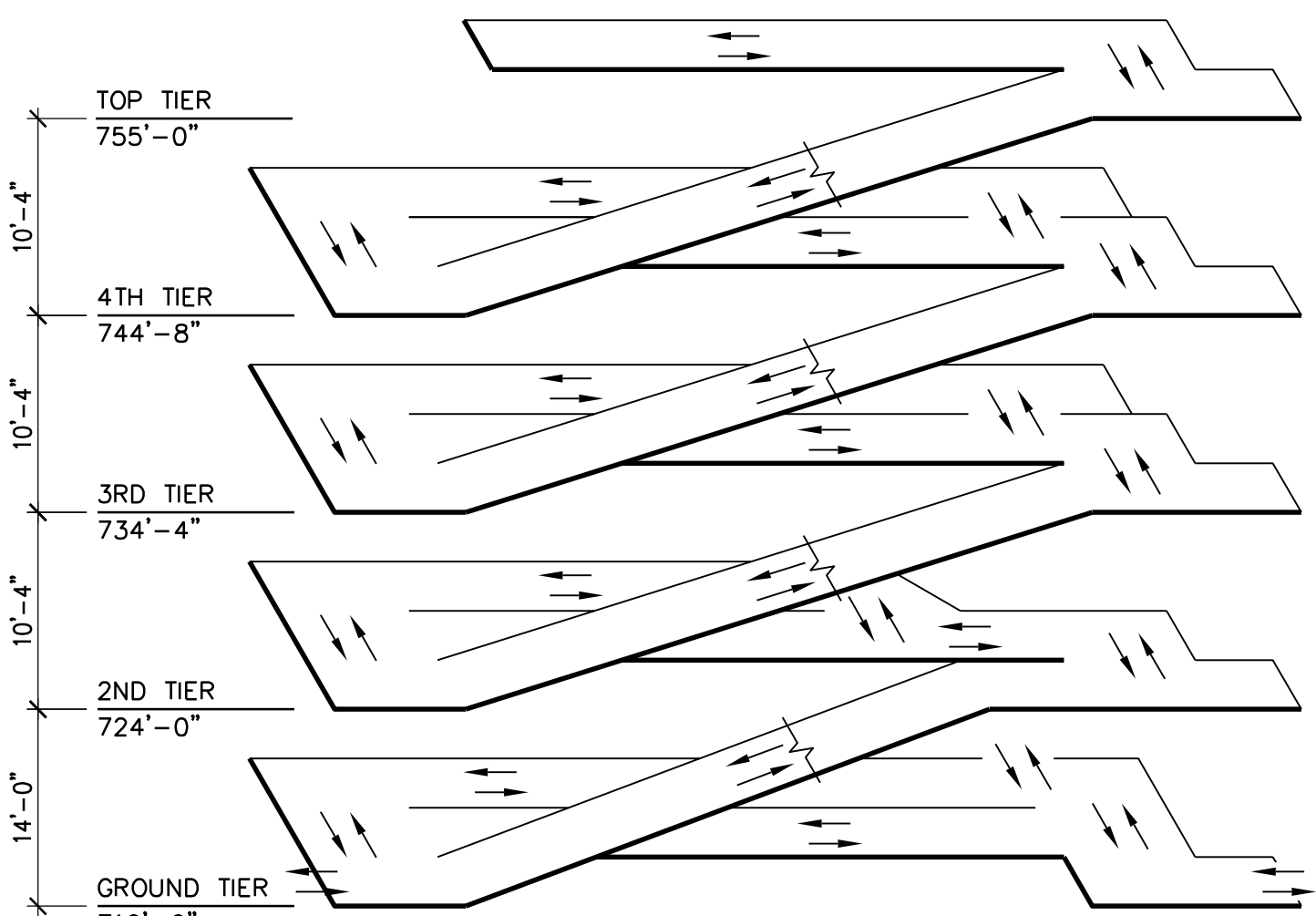


one foot
three eighths inch = one foot
one half inch = one foot
three quarters inch = one foot
one inch = one foot
one and one half inches = one foot
two inches = one foot
three inches = one foot
four inches = one foot
five inches = one foot
six inches = one foot
seven inches = one foot
eight inches = one foot
nine inches = one foot
ten inches = one foot
eleven inches = one foot
twelve inches = one foot
thirteen inches = one foot
fourteen inches = one foot
fifteen inches = one foot
sixteen inches = one foot
seventeen inches = one foot
eighteen inches = one foot
nineteen inches = one foot
twenty inches = one foot
twenty one inches = one foot
twenty two inches = one foot
twenty three inches = one foot
twenty four inches = one foot
twenty five inches = one foot
twenty six inches = one foot
twenty seven inches = one foot
twenty eight inches = one foot
twenty nine inches = one foot
thirty inches = one foot
thirty one inches = one foot
thirty two inches = one foot
thirty three inches = one foot
thirty four inches = one foot
thirty five inches = one foot
thirty six inches = one foot
thirty seven inches = one foot
thirty eight inches = one foot
thirty nine inches = one foot
forty inches = one foot
forty one inches = one foot
forty two inches = one foot
forty three inches = one foot
forty four inches = one foot
forty five inches = one foot
forty six inches = one foot
forty seven inches = one foot
forty eight inches = one foot
forty nine inches = one foot
fifty inches = one foot
fifty one inches = one foot
fifty two inches = one foot
fifty three inches = one foot
fifty four inches = one foot
fifty five inches = one foot
fifty six inches = one foot
fifty seven inches = one foot
fifty eight inches = one foot
fifty nine inches = one foot
sixty inches = one foot
sixty one inches = one foot
sixty two inches = one foot
sixty three inches = one foot
sixty four inches = one foot
sixty five inches = one foot
sixty six inches = one foot
sixty seven inches = one foot
sixty eight inches = one foot
sixty nine inches = one foot
seventy inches = one foot
seventy one inches = one foot
seventy two inches = one foot
seventy three inches = one foot
seventy four inches = one foot
seventy five inches = one foot
seventy six inches = one foot
seventy seven inches = one foot
seventy eight inches = one foot
seventy nine inches = one foot
eighty inches = one foot
eighty one inches = one foot
eighty two inches = one foot
eighty three inches = one foot
eighty four inches = one foot
eighty five inches = one foot
eighty six inches = one foot
eighty seven inches = one foot
eighty eight inches = one foot
eighty nine inches = one foot
ninety inches = one foot
ninety one inches = one foot
ninety two inches = one foot
ninety three inches = one foot
ninety four inches = one foot
ninety five inches = one foot
ninety six inches = one foot
ninety seven inches = one foot
ninety eight inches = one foot
ninety nine inches = one foot
one hundred inches = one foot



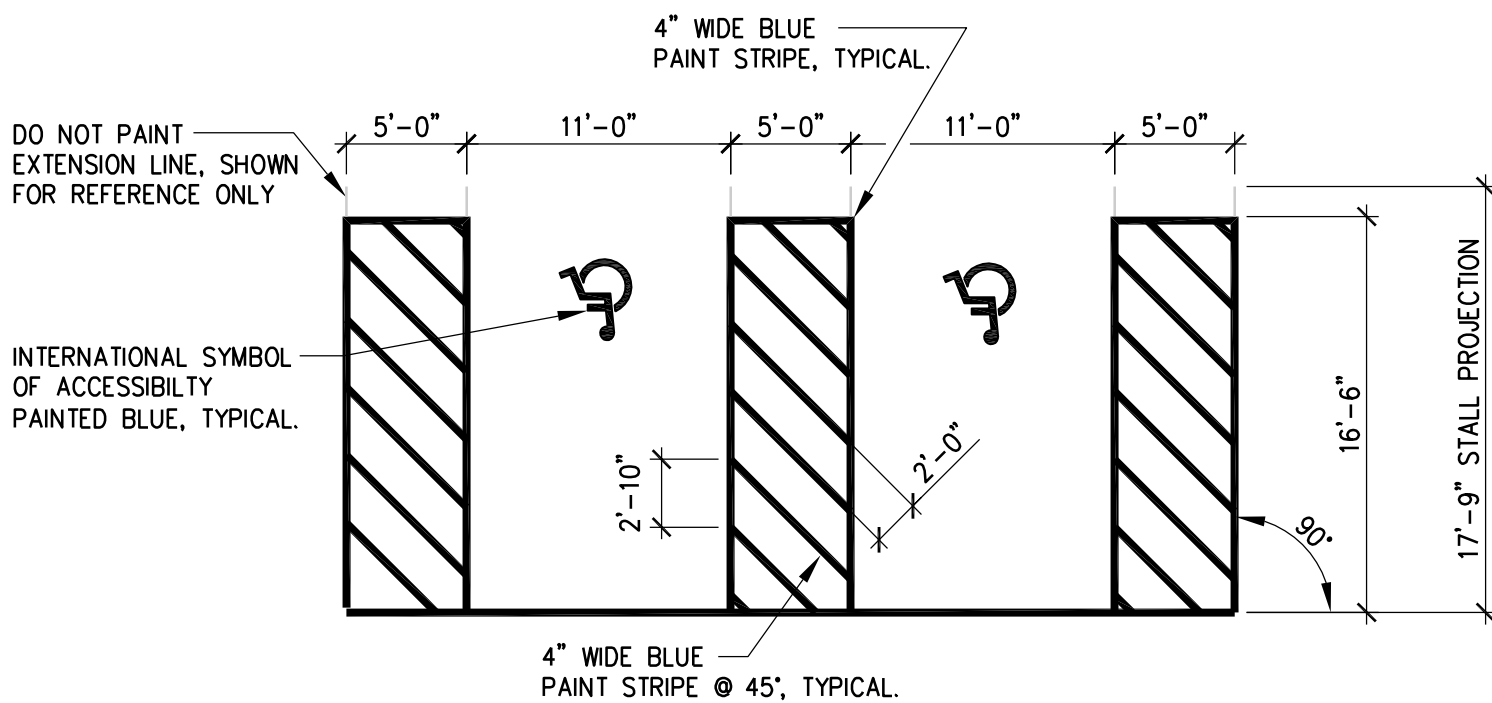
ISOMETRIC

CAR COUNT
9'-0" 90° STANDARD SPACE

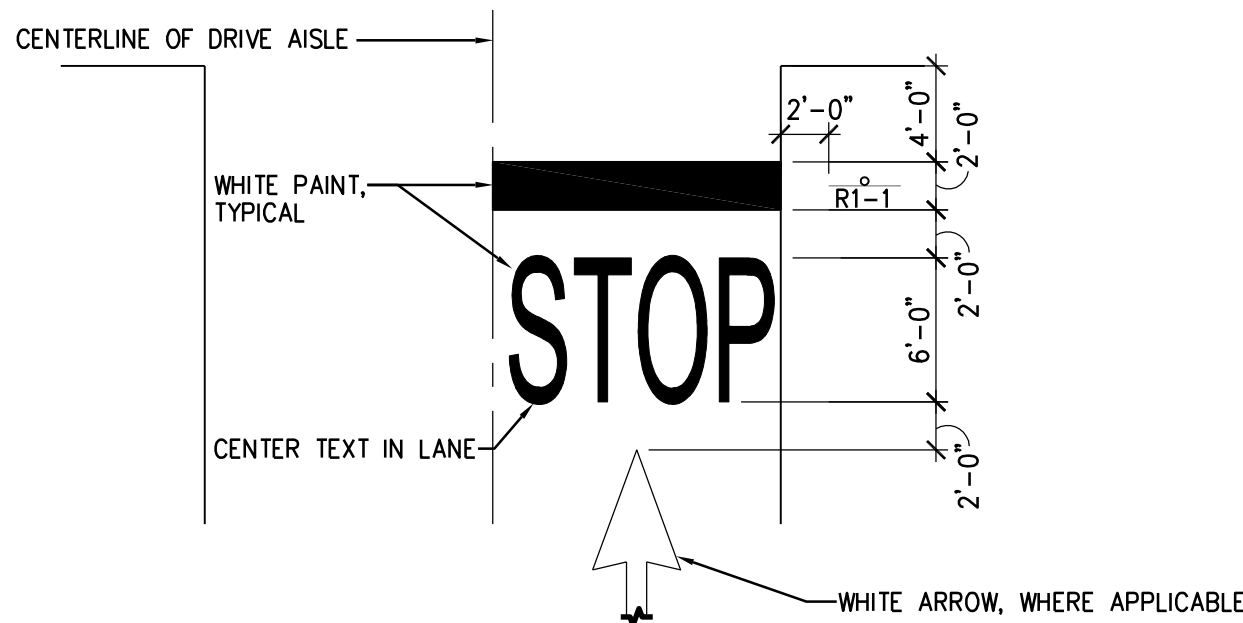
TIER	STANDARD	CAR ACCESSIBLE	TOTAL
GROUND	47	4	51
SECOND	83	3	86
THIRD	109	3	112
FOURTH	107	3	110
TOP	53	3	56
TOTAL	399	16	415

GENERAL NOTES:

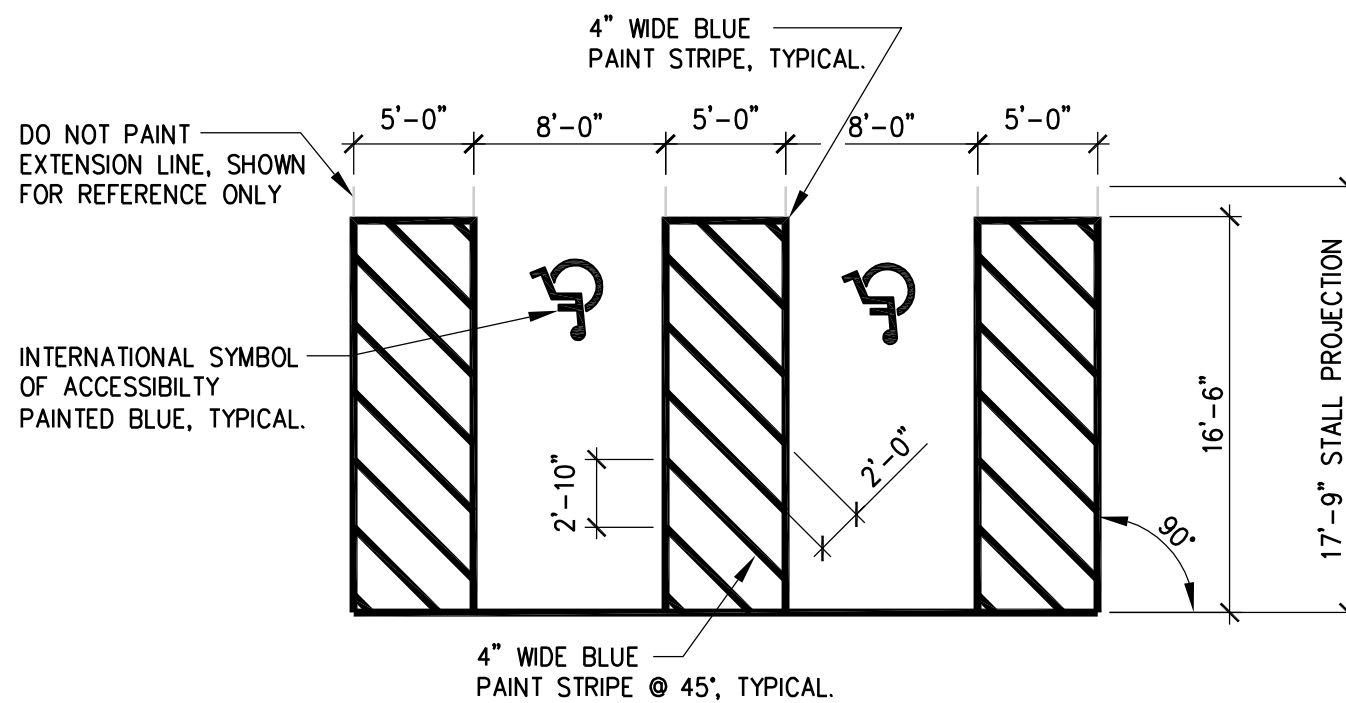
1. SEE SHEET AG-101 THRU AG-105 FOR STRIPING LAYOUTS.
2. SEE SHEET 01 FOR CODE ANALYSIS SUMMARY.
3. SEE STRUCTURAL DRAWINGS FOR DESIGN LOADINGS.
4. SEE THIS SHEET FOR TYPICAL STRIPING DIMENSIONS.
5. FOR LIGHTING FIXTURES AND DETAILS, SEE ELECTRICAL DRAWINGS.
6. FOR PIPING INFORMATION, SEE MECHANICAL AND PLUMBING DRAWINGS.



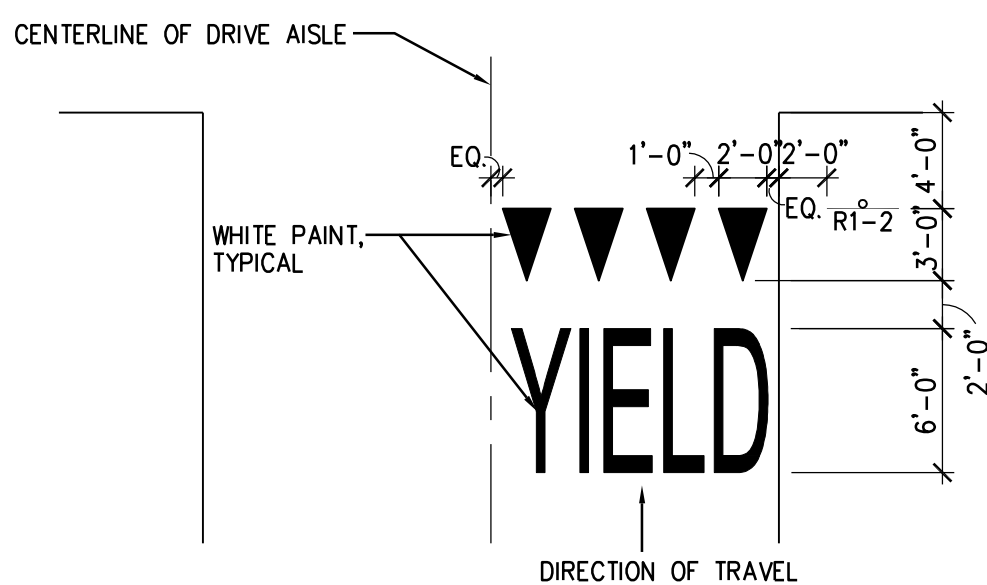
B5 90° VAN ACC. STRIPING DETAIL



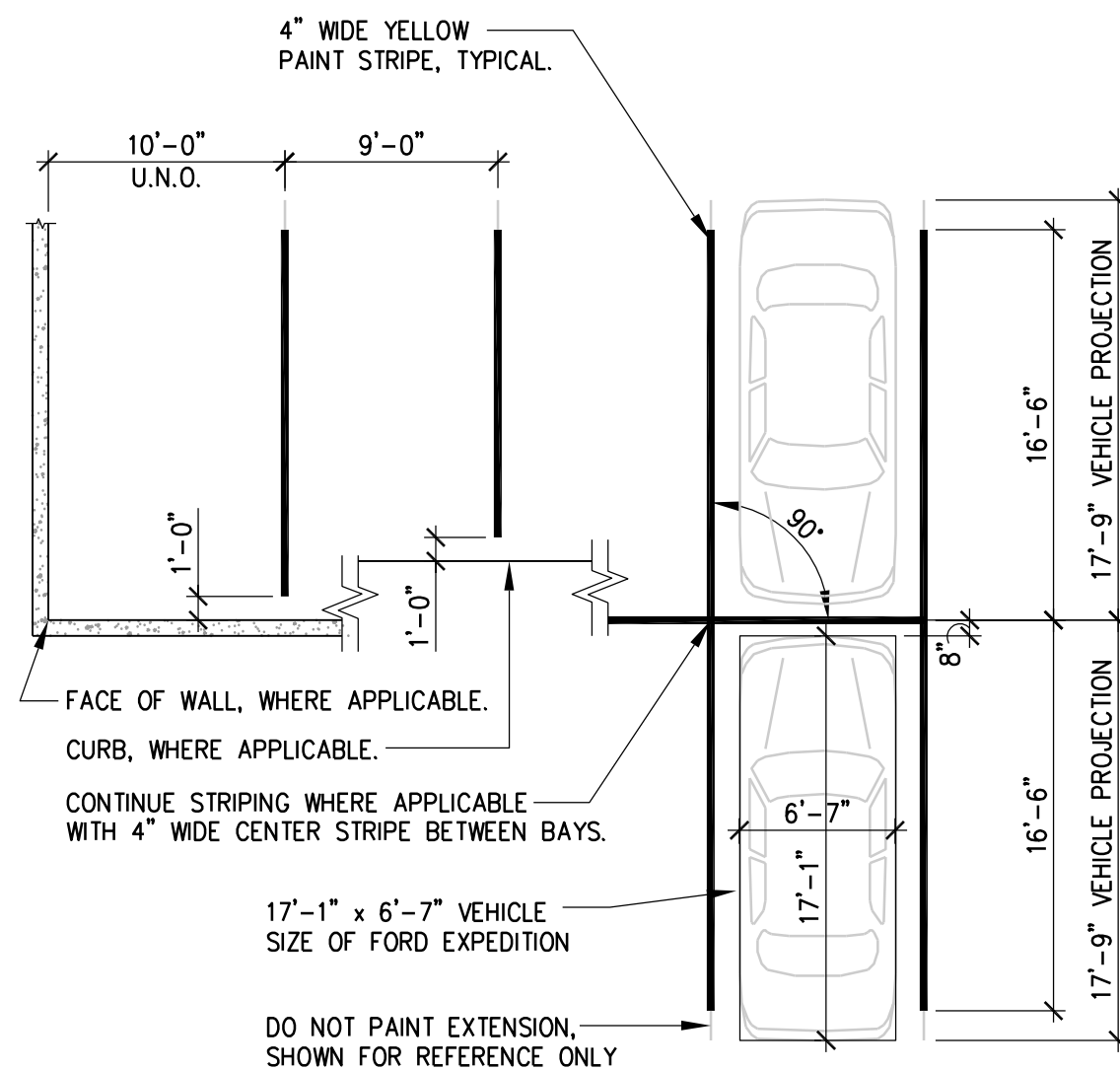
D3 STOP LINE



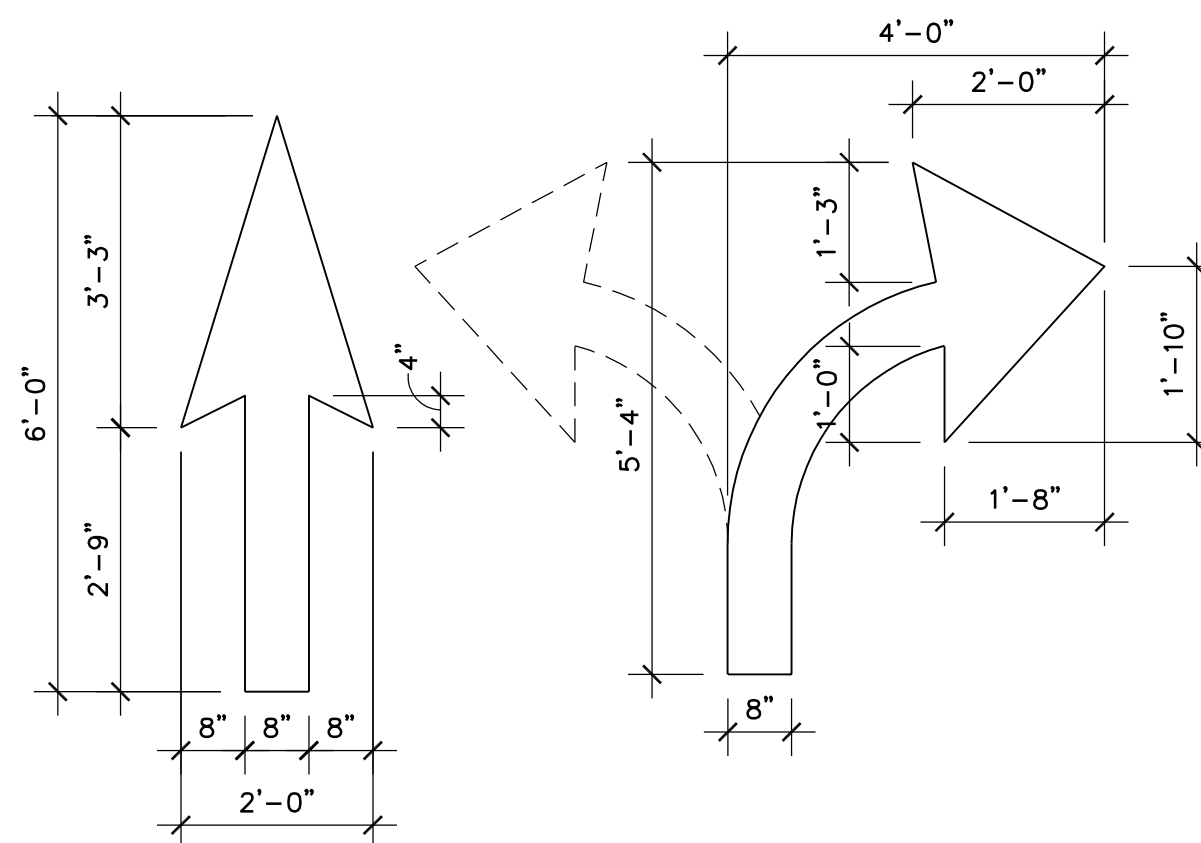
D5 90° ACCESSIBLE STRIPING DETAIL



F3 YIELD SYMBOL



F5 90° STRIPING DETAIL



F7 TYPICAL ARROW DETAILS

		CONSULTANTS/ENGINEERS:				ARCHITECT:		Drawing Title		Project Title		Project Number		Office of Construction and Facilities Management					
		KJWW ENGINEERING CONSULTANTS Mechanical/Electrical/Plumbing Engineer		TERRACON Geotechnical Engineer		GRAEF Civil Engineer/Landscape Architect		WALKER PARKING CONSULTANTS Structural Engineer		FAITHFUL + GOULD Cost Management		ISOMETRIC, CAR COUNT AND DETAILS				400 CAR PARKING GARAGE		636-402	
FINAL CONSTRUCTION DOCUMENTS		06/10/11		623 26TH AVENUE ROCK ISLAND, ILLINOIS 61201		3640 12TH STREET SW CEDAR RAPIDS, IOWA 52404		332 SOUTH MICHIGAN, SUITE 1400 CHICAGO, ILLINOIS 60604-4367		505 DAVIS ROAD ELGIN, ILLINOIS 60123		222 SOUTH RIVERSIDE PLAZA, SUITE 2240 CHICAGO, ILLINOIS 60606				233 North Michigan Avenue Suite 3000 Chicago, Illinois 60601		Building Number 43	
100% REVIEW SUBMISSION (NOT FOR CONSTRUCTION)		06/11/11		319 366-8321 Telephone 309 786-5967 Fax		309 786-8321 Telephone 319 366-0032 Fax		312 567-7503 Telephone 312 565-9037 Fax		312 567-7503 Telephone 312 565-9037 Fax		312 565-1800 Telephone 312 565-5912 Facsimile www.lhsdesign.com				312 567-7503 Telephone 312 565-9037 Fax		Drawing Number AG-100	
75% REVIEW SUBMISSION (NOT FOR CONSTRUCTION)		02/03/11		01/19/11		01/19/11		01/19/11		01/19/11		01/19/11				01/19/11		Dwg. 69 of 152	
75% REVIEW SUBMISSION (NOT FOR CONSTRUCTION) - COST ESTIMATE		01/19/11		01/19/11		01/19/11		01/19/11		01/19/11		01/19/11		01/19/11		01/19/11			
35% REVIEW SUBMISSION (NOT FOR CONSTRUCTION)		11/22/10		11/22/10		11/22/10		11/22/10		11/22/10		11/22/10		11/22/10		11/22/10			
REVISIONS:		Date		Date		Date		Date		Date		Date		Date		Date			