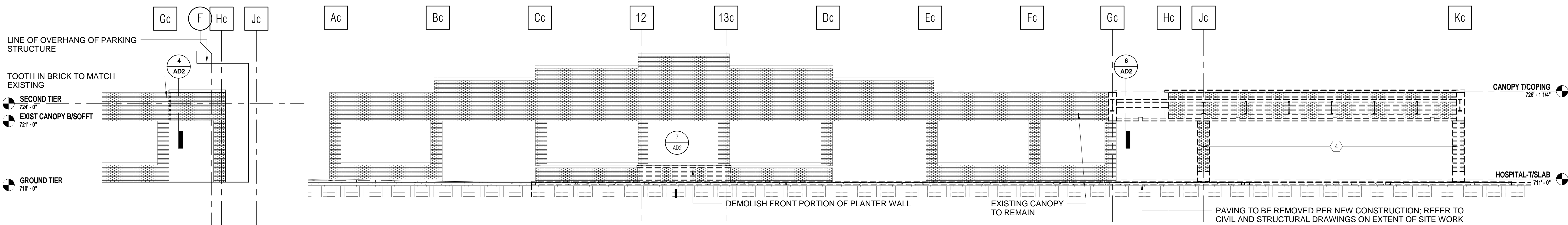
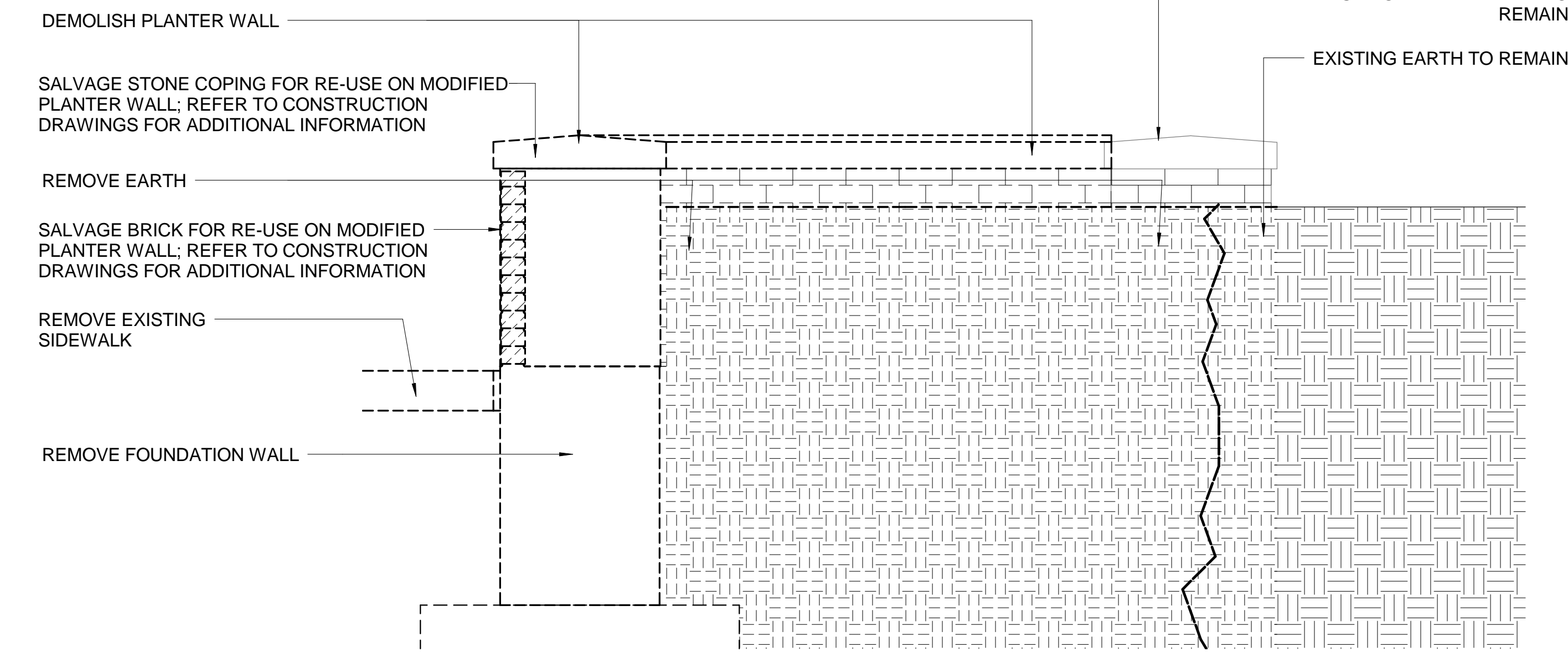


three inches = one foot  
one and one half inches = one foot  
one inch = one foot  
three quarters inch = one foot  
one half inch = one foot  
three eighths inch = one foot  
one quarter inch = one foot  
one eighth inch = one foot

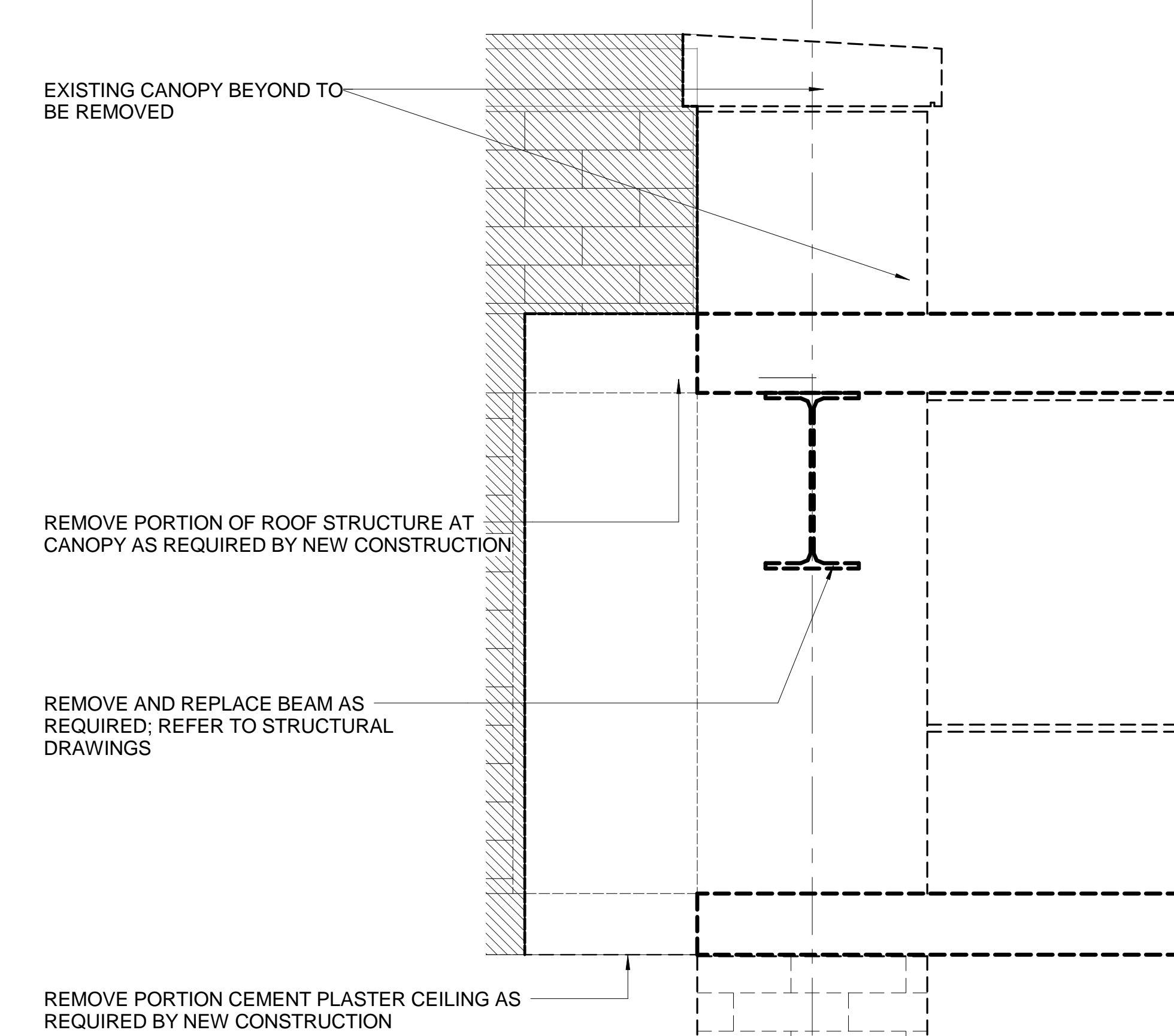


2 ELEVATION @ EXISTING CANOPY  
1/8" = 1'-0"  
A1

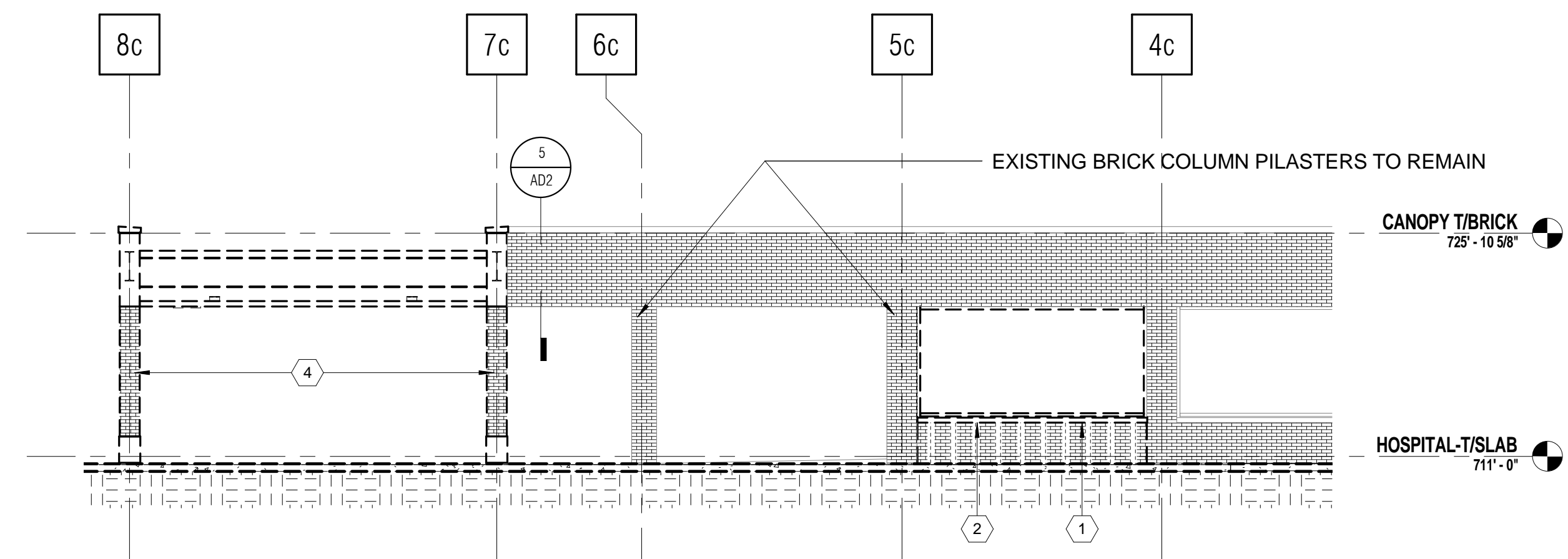
1 DEMOLITION ELEVATION OF CANOPY  
1/8" = 1'-0"  
A19



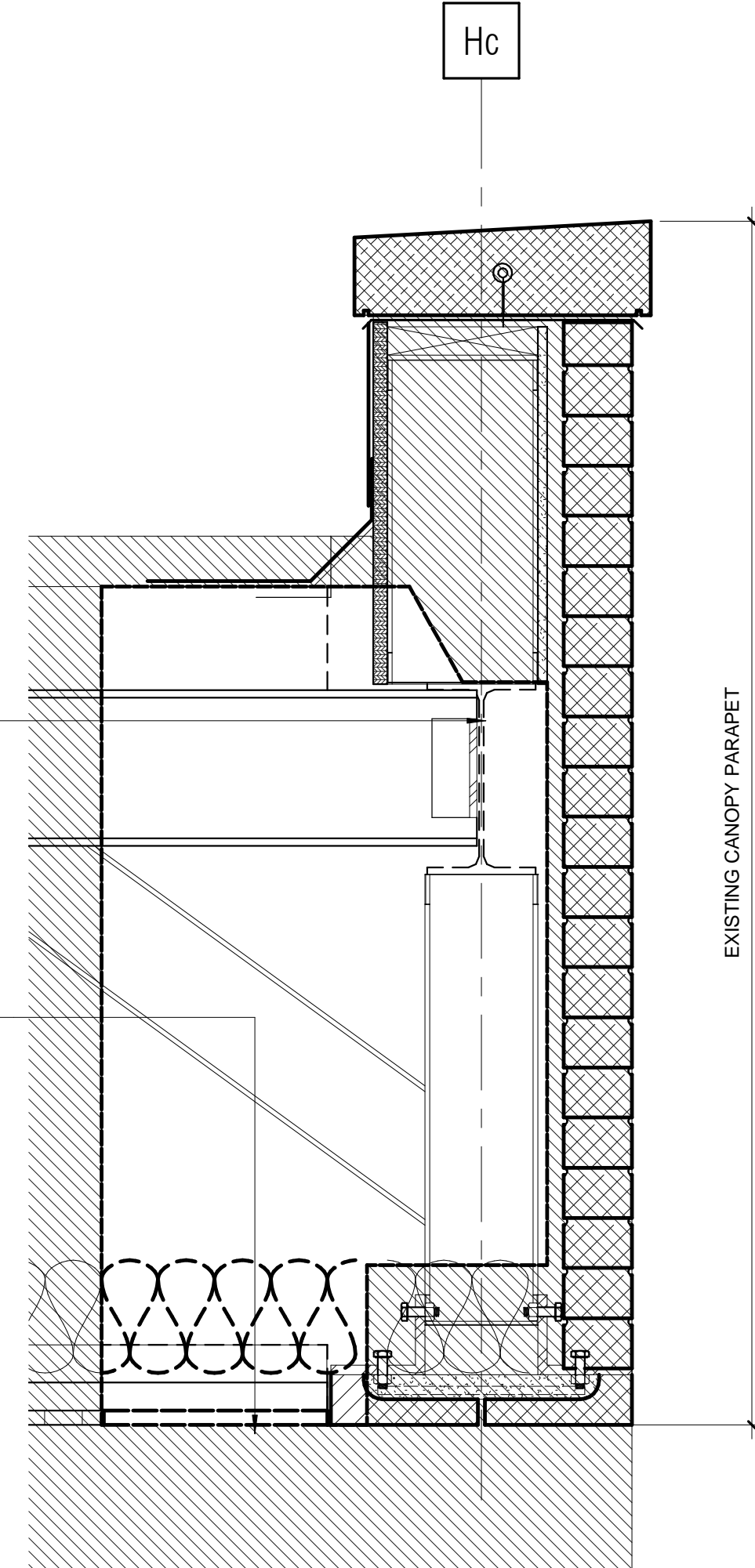
7 DEMOLITION SECTION @ EXISTING PLANTER WALL  
3/4" = 1'-0"  
AD1



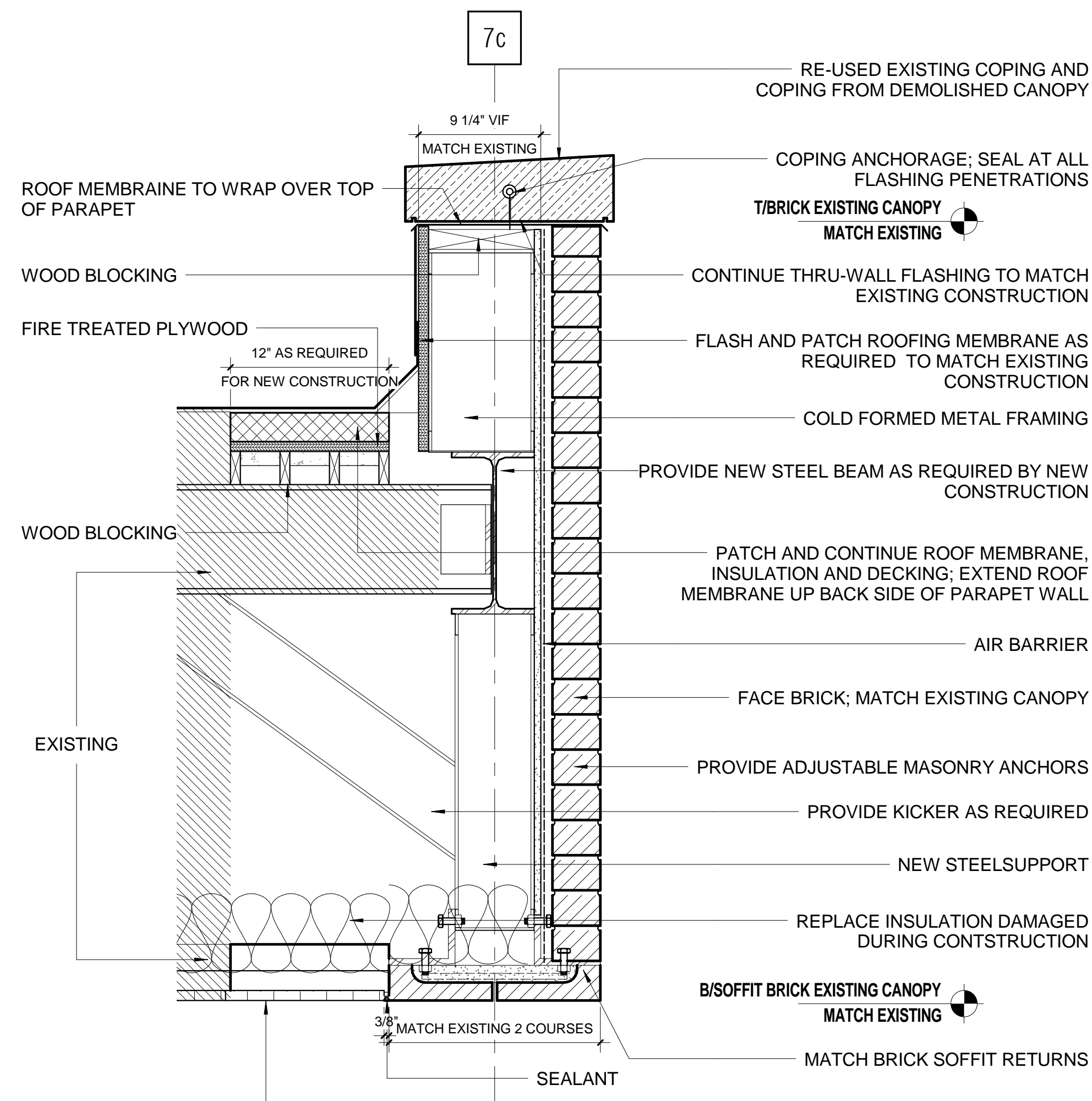
6 DEMOLITION SECTION DETAIL @ EXISTING CANOPY  
1 1/2" = 1'-0"  
AD2



DEMOLITION ELEVATION/SECTION OF CANOPY AND COVERED WALKWAY  
1/8" = 1'-0"  
A19



5 DEMOLITION SECTION DETAIL @ EXISTING CANOPY 2  
1 1/2" = 1'-0"  
AD2



4 SECTION DETAIL @ EXISTING CANOPY  
1 1/2" = 1'-0"  
A8

## DEMOLITION PLAN NOTES

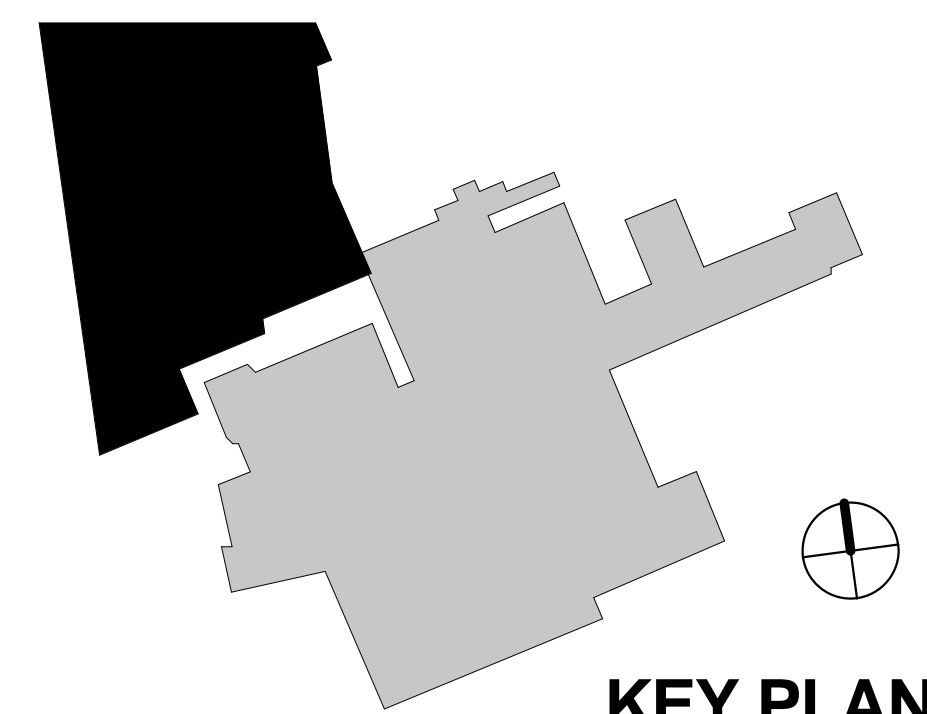
- SEE SHEET I2 FOR GENERAL DEMOLITION NOTES.
- EXISTING CONSTRUCTION TO REMAIN SHALL BE PATCHED W/CONSTRUCTION MATCHING ADJACENT U.O.N. PATCHED AREAS SHALL BE SMOOTH AND FLUSH WITH ADJACENT EXISTING CONSTRUCTION.
- CONTRACTOR SHALL COORDINATE ALL DEMOLITION WORK OF CANOPY AND COVERED WALKWAY WITH PROJECT MANAGER TO AVOID DISRUPTION OF HOSPITAL SERVICES
- SEE MEP AND STRUCTURAL DRAWINGS FOR ADDITIONAL DEMOLITION WORK NOT SHOWN.
- REFER TO CONSTRUCTION PLANS, FOR ALL WALLS TO REMAIN.
- AT CANOPY: REMOVE ALL CEILINGS, ASSOCIATED SYSTEMS, LIGHTING AND SOFFITS THROUGHOUT AS INDICATED ON PLANS, REFER TO RCP PLANS.
- AT CANOPY: ALL BRIDGING, STEEL COLUMNS AND BEAMS, FOUNDATION AND FRAMING TO BE REMOVED. REFER TO STRUCTURAL DRAWING FOR EXTENT OF FRAMING REMOVAL.

## DEMOLITION PLAN SYMBOLS

|  |                             |
|--|-----------------------------|
|  | EXISTING DOOR TO BE REMOVED |
|  | EXISTING DOOR TO REMAIN     |
|  | EXISTING WALL TO BE REMOVED |
|  | EXISTING WALL               |
|  | 1 HOUR RATED PARTITION      |
|  | 2 HOUR RATED PARTITION      |
|  | NEW COLUMN GRID LINE        |
|  | EXISTING COLUMN GRID LINE   |
|  | NO WORK IN EXISTING AREA    |

## DEMOLITION KEYNOTES

- EXISTING STONE SILL TO BE REMOVED AND A PORTION TO BE REUSED AND REINSTALLED IN SAME LOCATION; REFER TO CONSTRUCTION PLANS FOR ADDITIONAL INFORMATION
- REMOVE GLAZING AND FRAME, STONE SILL AND BRICK UP TO BASE OF SILL TO ALLOW FOR NEW OPENING
- REMOVE BOLLARDS
- EXISTING CANOPY, INCLUDING ALL ELECTRICAL, TECHNOLOGY - CAMERAS, MECHANICAL, PLUMBING (ROOF DRAINS AND STRUCTURAL ASSOCIATED WITH CANOPY, TO BE REMOVED; REUSE AND SALVAGE ALL STONE COPINGS AND SILLS FOR CONSTRUCTION
- REMOVE EXISTING CANOPY COLUMNS, FOUNDATIONS AND BASE PLATES AND REINFORCED PEDESTALS ASSOCIATED WITH CANOPY.
- REMOVE PORTION OF EXISTING PLANTER WALL AND FOUNDATIONS ASSOCIATED WITH PLANTER WALL
- REMOVE AND REUSE PLANTER COPING FOR PATCHING AND REPAIR WORK TO PLANTER DURING NEW CONSTRUCTION.
- REMOVE AND REUSE BRICK ON PLANTER WALL ONLY FOR PATCHING AND REPAIR WORK TO PLANTER DURING NEW CONSTRUCTION
- REMOVE ALL EARTHWORK IN PLANTER
- EXISTING PLANTER AND LANDSCAPING TO REMAIN
- CURB AND SIDEWALK TO BE REMOVED
- OVERHEAD ELECTRIC AND CABLE LINES TO BE RELOCATED; REFER TO CIVIL DRAWINGS FOR ADDITIONAL INFORMATION



## KEY PLAN

## CONSULTANTS/ENGINEERS:

KJWW ENGINEERING CONSULTANTS  
Mechanical/Electrical/Plumbing Engineer  
632 26TH AVENUE  
ROCK ISLAND, ILLINOIS 61201  
309.788.0673 Telephone  
309.788.5967 Fax

TERRACON  
Geotechnical Engineer  
2640 12TH STREET SW  
CEDAR RAPIDS, IOWA 52404  
319.366.8321 Telephone  
319.366.0032 Fax

GRAEF  
Civil Engineer/Landscape Architect  
332 SOUTH MICHIGAN, SUITE 1400  
CHICAGO, ILLINOIS 60604-4507  
312.582.2020 Telephone  
312.939.7014 Fax

WALKER PARKING CONSULTANTS  
Structural Engineer  
505 DAVIS ROAD  
ELGIN, ILLINOIS 60123  
847.697.2640 Telephone  
847.697.7439 Fax

FAITHFUL+GOULD  
Cost Management  
222 SOUTH RIVERSIDE PLAZA, SUITE 2240  
CHICAGO, ILLINOIS 60606  
312.612.6319 Telephone  
312.655.9037 Fax

## ARCHITECT:

Loebl Schlossman & Hackl  
Architecture • Planning • Interiors

Copyright © 2011 Loebl Schlossman & Hackl Inc.

233 North Michigan Avenue  
Suite 3000  
Chicago, Illinois 60601

312.565.1800 Telephone  
312.565.5912 Facsimile  
www.lshdesign.com

Drawing Title

DEMOLITION & CONSTRUCTION ELEVATIONS,  
SECTIONS & DETAILS OF EXISTING CANOPY

Approved: Project Director

Iowa City VA Healthcare System  
Department of Veterans Affairs Medical Center

Project Title

400 CAR PARKING GARAGE

Location

IOWA CITY, IA

Date

06/10/2011

Checked

PS/JP

Drawn

DM

Project Number

636-402

Building Number

43

Drawing Number

AD2

Dwg 26 of 152

Office of  
Construction  
and Facilities  
Management

Department of  
Veterans Affairs