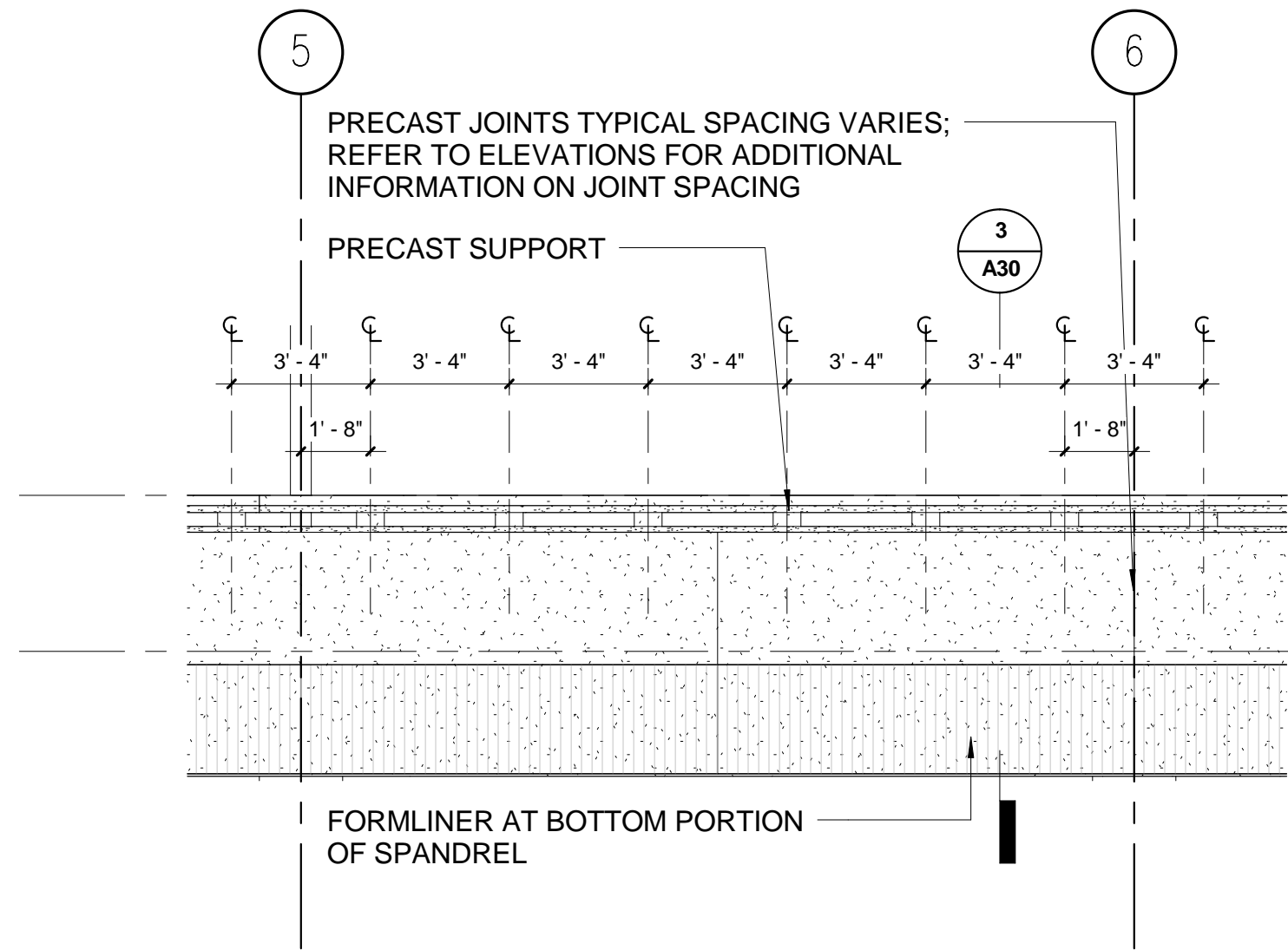
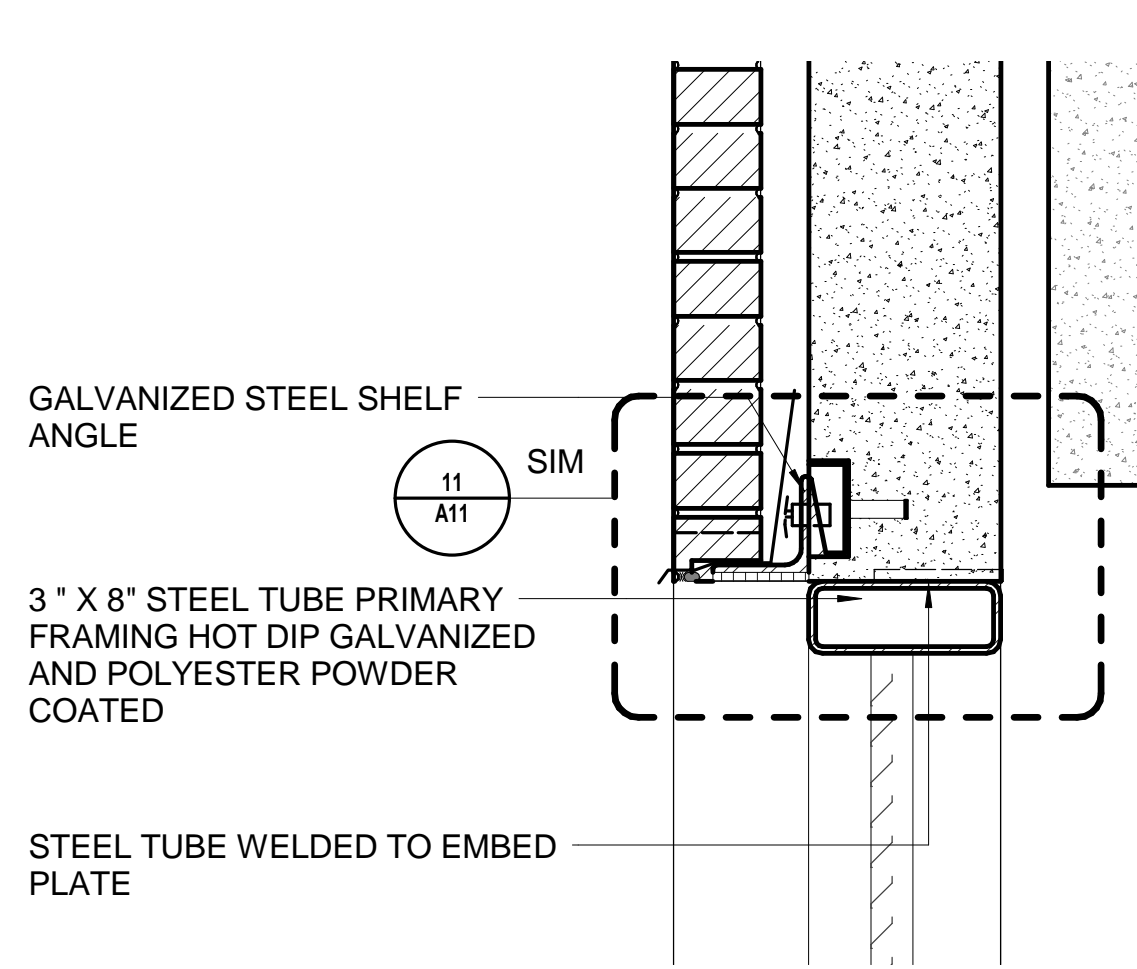


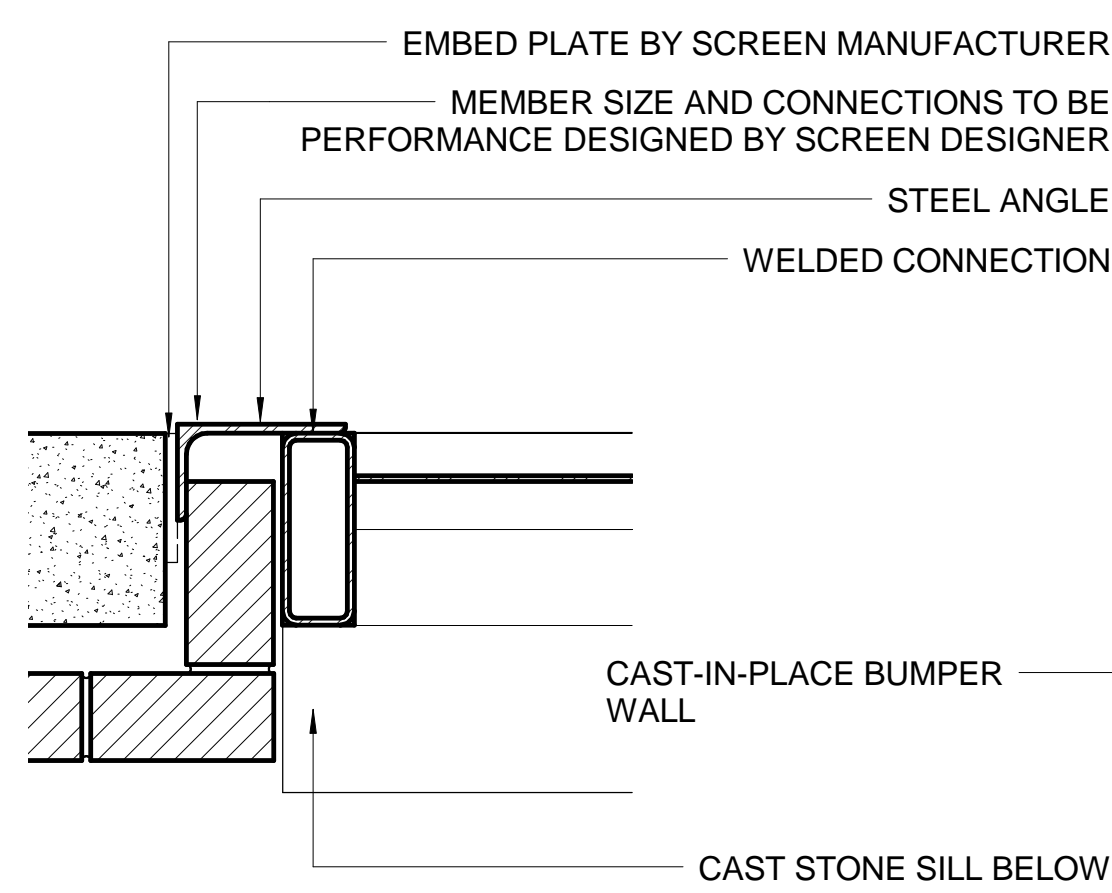
three inches = one foot
one and one half inches = one foot
one inch = one foot
three quarters inch = one foot
one half inch = one foot
three eighths inch = one foot
one quarter inch = one foot
one eighth inch = one foot



13 ENLARGED ELEVATION OF PRECAST SPANDREL
A6
1/4" = 1'-0"

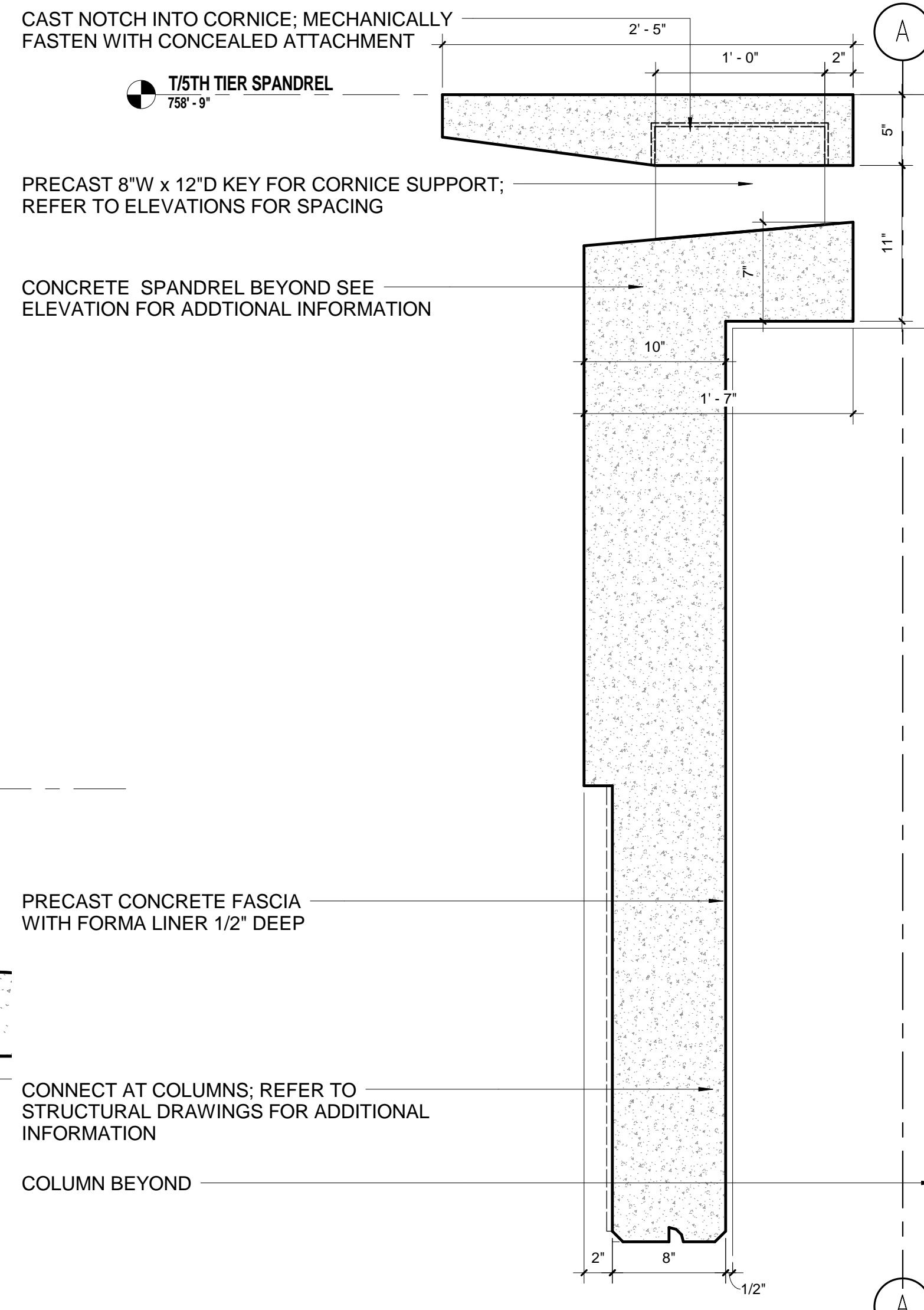


12 SECTION DETAIL @ GRILLE
A30
1 1/2" = 1'-0"

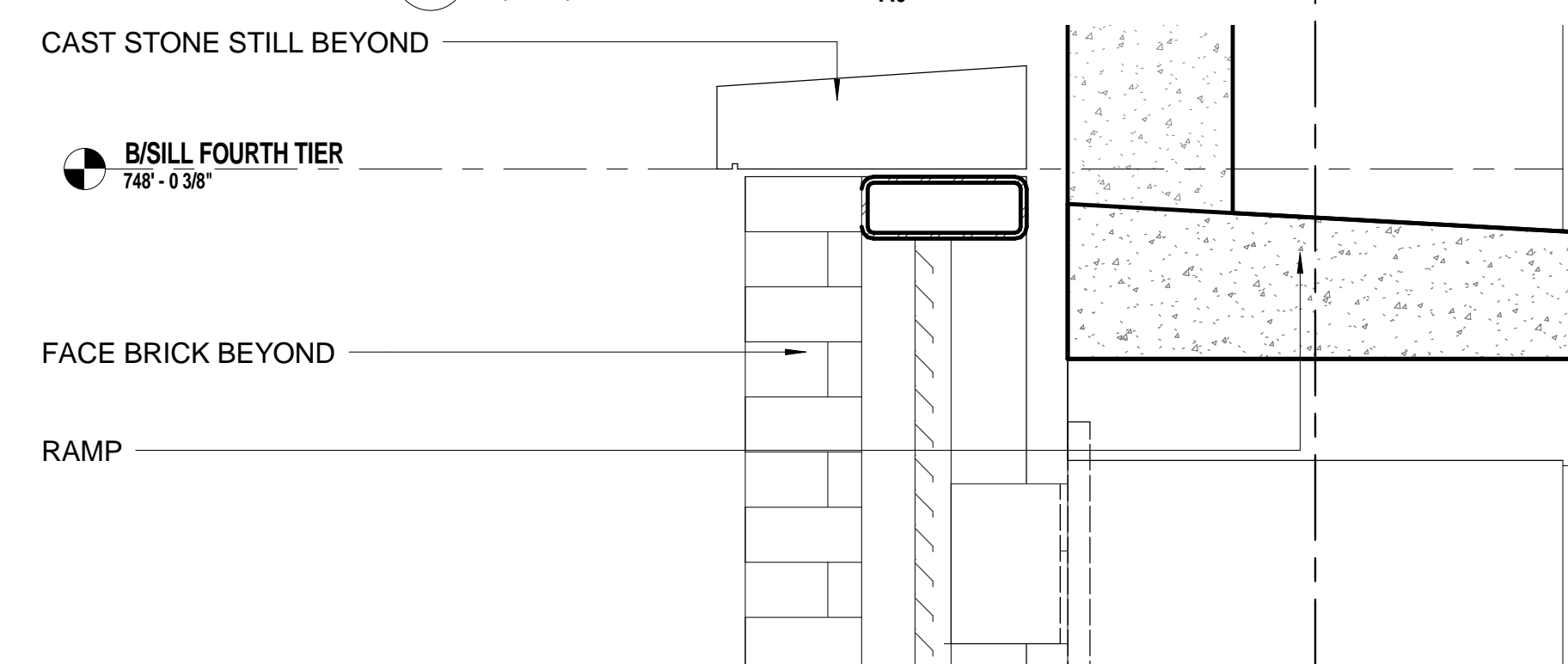


11 PLAN DETAIL @ GRILLE JAMB
A30
1 1/2" = 1'-0"

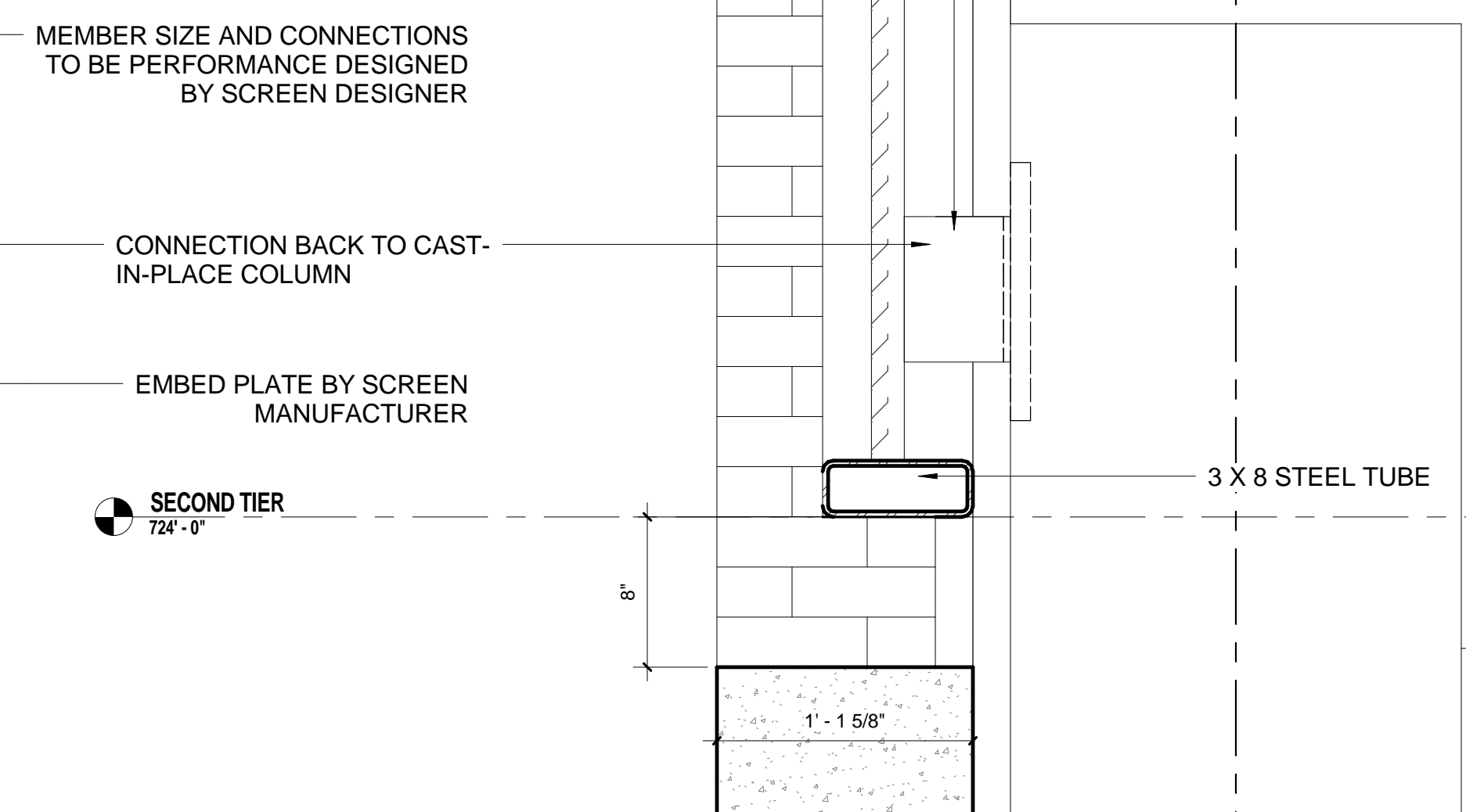
4TH STAIR LANDING
749'-10"



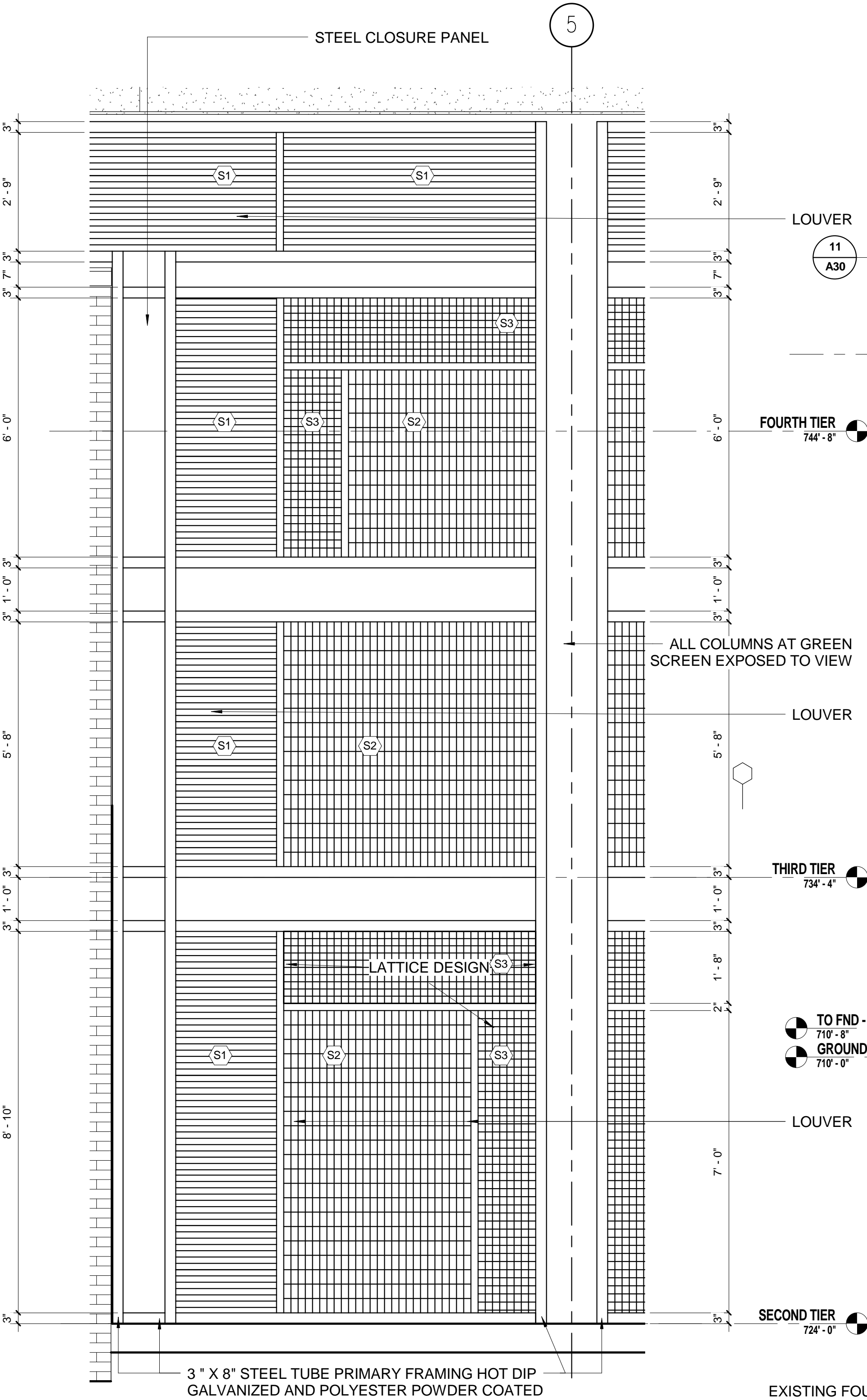
3 SECTION DETAIL @ PRECAST SPANDREL TYPICAL
A6
1 1/2" = 1'-0"



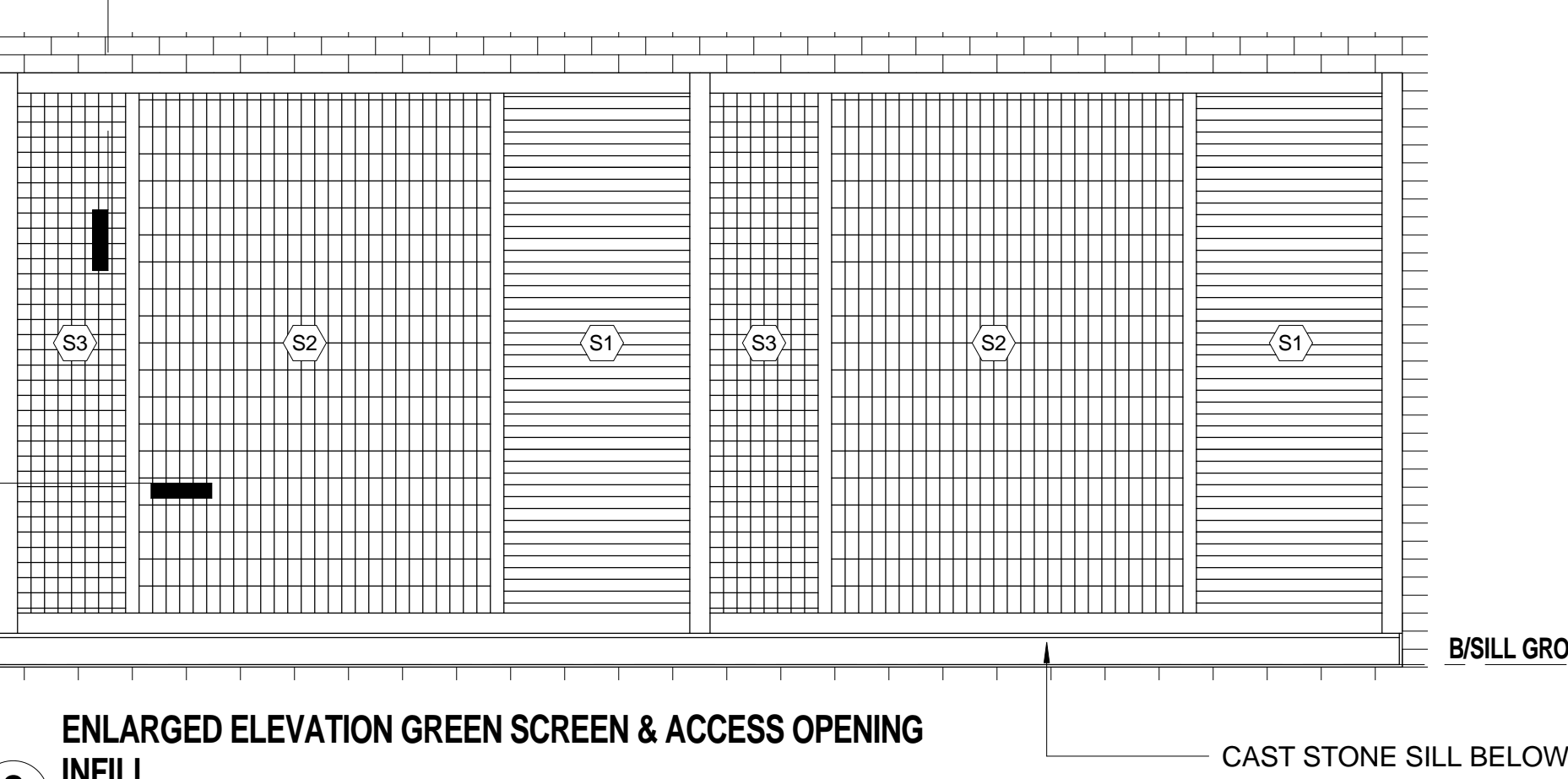
2 SECTION DETAIL @ HEAD - GREEN SCREEN
A29
1 1/2" = 1'-0"



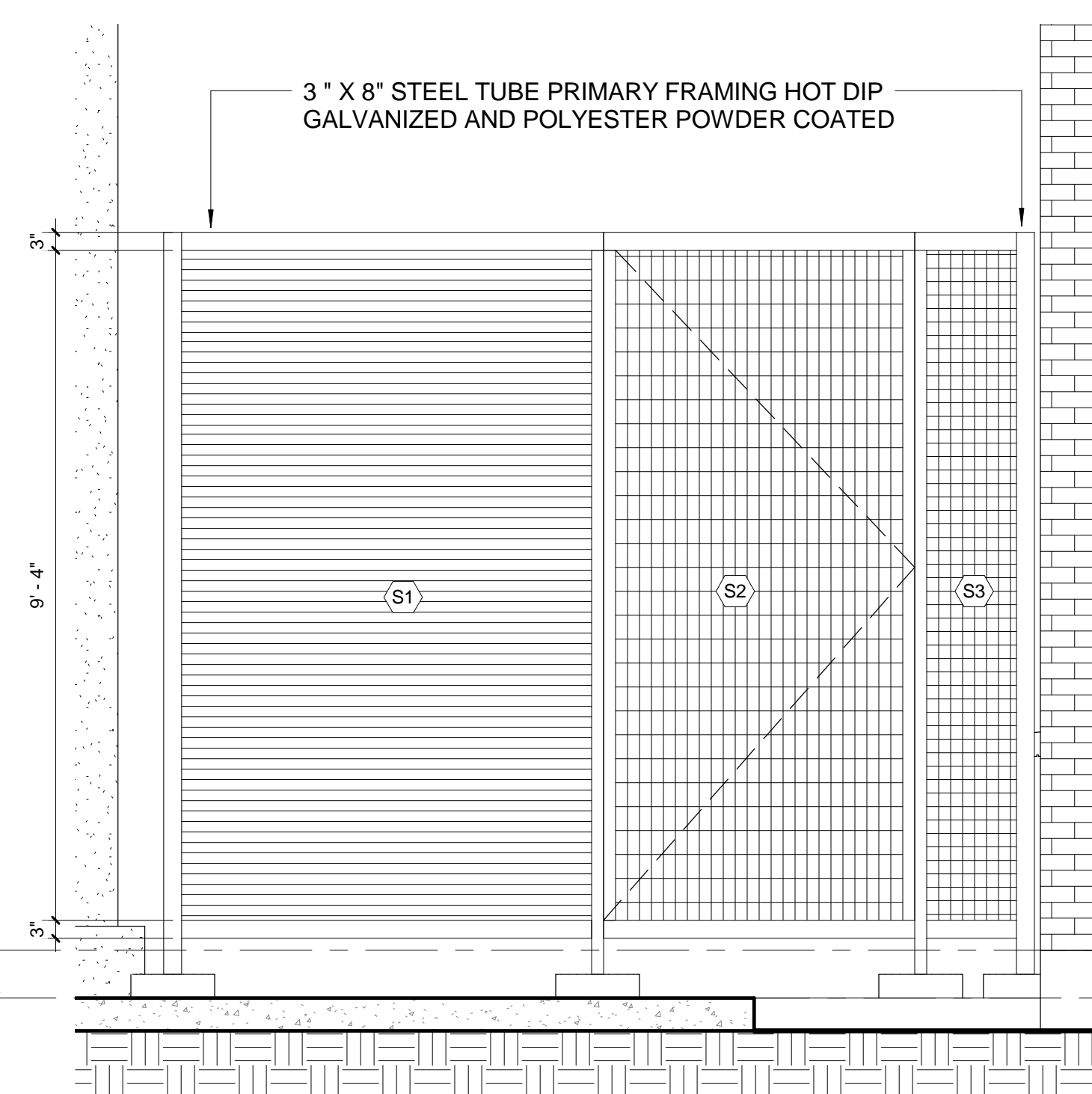
1 SECTION DETAIL @ JAMB - GREEN SCREEN
A29
1 1/2" = 1'-0"



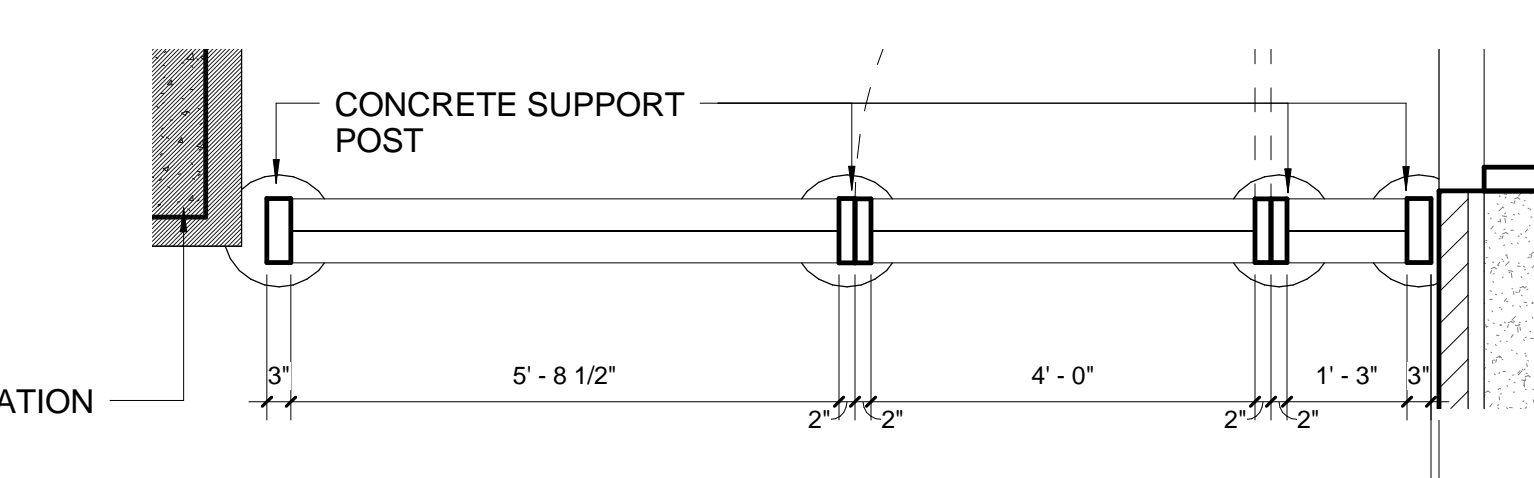
9 ENLARGED ELEVATION TYPICAL GREEN SCREEN BAY
A29
1/2" = 1'-0"



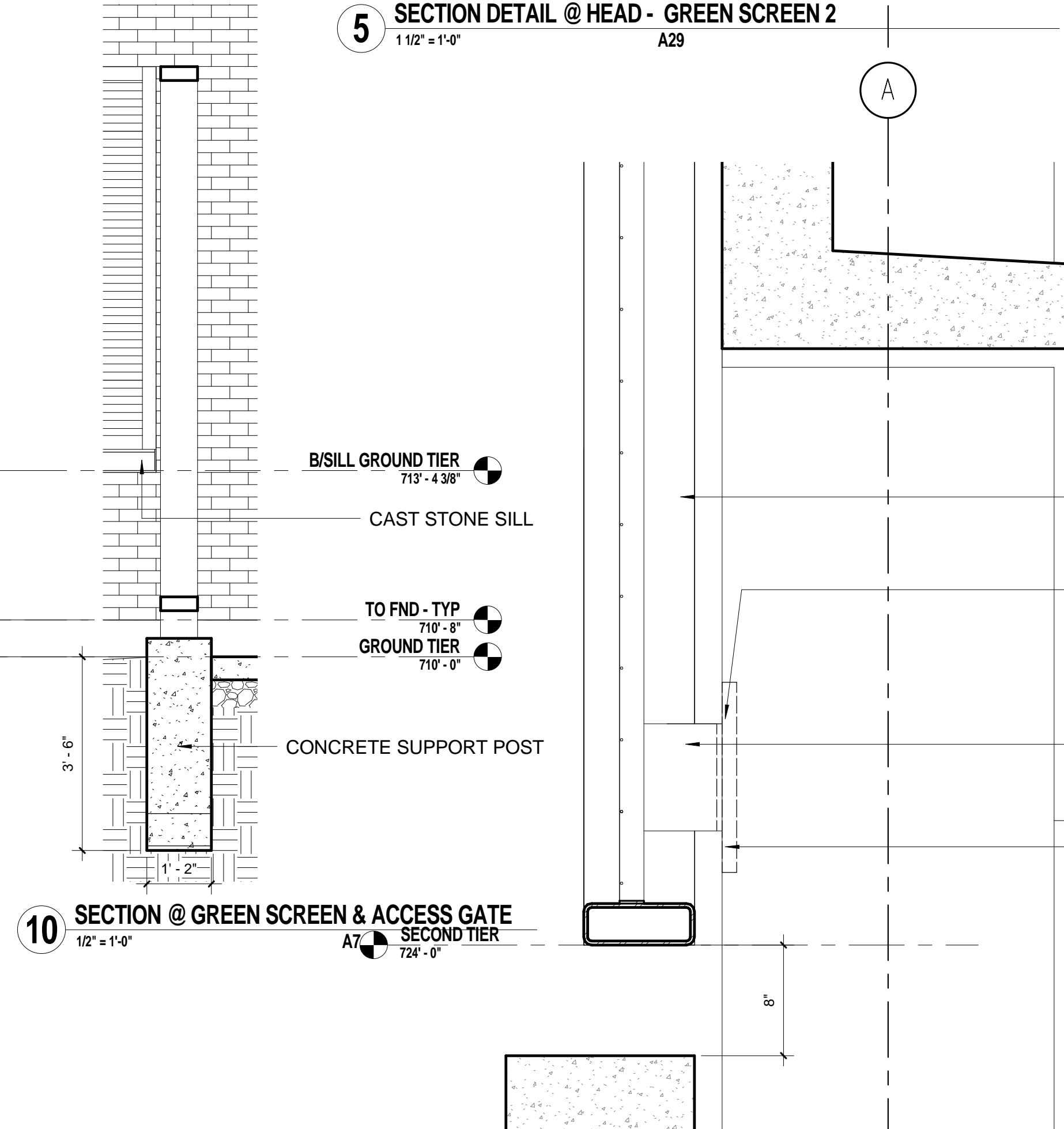
8 ENLARGED ELEVATION GREEN SCREEN & ACCESS OPENING
A7
1/2" = 1'-0"



7 ENLARGED ELEVATION GREEN SCREEN & ACCESS GATE
A10
1/2" = 1'-0"



6 ENLARGED PLAN @ ACCESS GATE
A1
1/2" = 1'-0"



10 SECTION @ GREEN SCREEN & ACCESS GATE
A7
1/2" = 1'-0"

5 SECTION DETAIL @ HEAD - GREEN SCREEN 2
A29
1 1/2" = 1'-0"

4 SECTION DETAIL @ JAMB - GREEN SCREEN 2
A29
1 1/2" = 1'-0"

FINAL CONSTRUCTION DOCUMENTS	06/10/11
100% REVIEW SUBMISSION (NOT FOR CONSTRUCTION)	04/11/11
75% REVIEW SUBMISSION (NOT FOR CONSTRUCTION)	02/03/11
75% REVIEW SUBMISSION (NOT FOR CONSTRUCTION) - COST ESTIMATE	01/19/11
35% REVIEW SUBMISSION (NOT FOR CONSTRUCTION)	11/22/10
Revisions:	Date

CONSULTANTS/ENGINEERS:

KJWW ENGINEERING CONSULTANTS
Mechanical/Electrical/Plumbing Engineer
623 26TH AVENUE
ROCK ISLAND, ILLINOIS 61201
309.788.0673 Telephone
309.786.5967 Fax

TERRACON
Geotechnical Engineer
2640 12TH STREET SW
CEDAR RAPIDS, IOWA 52404
319.366.8321 Telephone
319.366.0032 Fax

GRAEF
Civil Engineer/Landscape Architect
332 SOUTH MICHIGAN, SUITE 1400
CHICAGO, ILLINOIS 60604-4507
312.582.2020 Telephone
312.939.7014 Fax

WALKER PARKING CONSULTANTS
Structural Engineer
505 DAVIS ROAD
ELGIN, ILLINOIS 60123
847.697.2640 Telephone
847.697.7439 Fax

FAITHFUL+GOULD
Cost Management
222 SOUTH RIVERSIDE PLAZA, SUITE 2240
CHICAGO, ILLINOIS 60606
312.612.6319 Telephone
312.655.9037 Fax

ARCHITECT:

Loebl Schlossman & Hackl
Architecture • Planning • Interiors

Copyright © 2011 Loebl Schlossman & Hackl Inc.

233 North Michigan Avenue
Suite 3000
Chicago, Illinois 60601

312.565.1800 Telephone
312.565.5912 Facsimile
www.lshdesign.com

Drawing Title	WALL SECTIONS & DETAILS - WEST GREEN SCREEN
Approved: Project Director	Iowa City VA Healthcare System Department of Veterans Affairs Medical Center

Project Title	400 CAR PARKING GARAGE	Project Number	636-402
Location	IOWA CITY, IA	Building Number	43
Date	06/10/2011	Checked	PS/JP
Drawn	DM	Drawing Number	A30
		Dwg	63 of 152

Office of
Construction
and Facilities
Management

Department of
Veterans Affairs