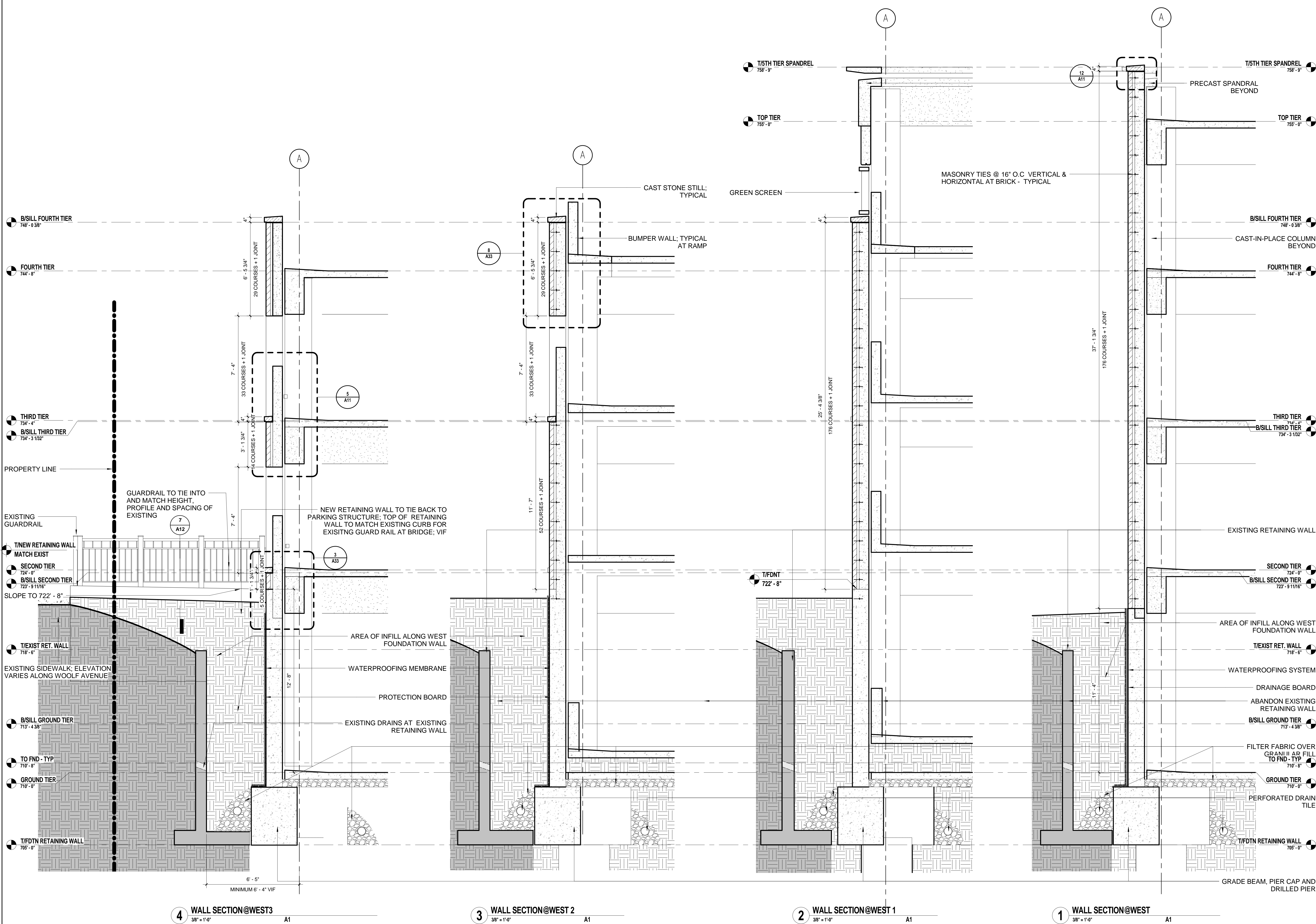


three inches = one foot  
one and one half inches = one foot  
one inch = one foot  
three quarters inch = one foot  
one half inch = one foot  
three eighths inch = one foot  
one eighth inch = one foot  
one quarter inch = one foot



### CONSTRUCTION DETAIL NOTES

REFER TO STRUCTURAL DRAWINGS FOR PIER AND FOUNDATION INFORMATION

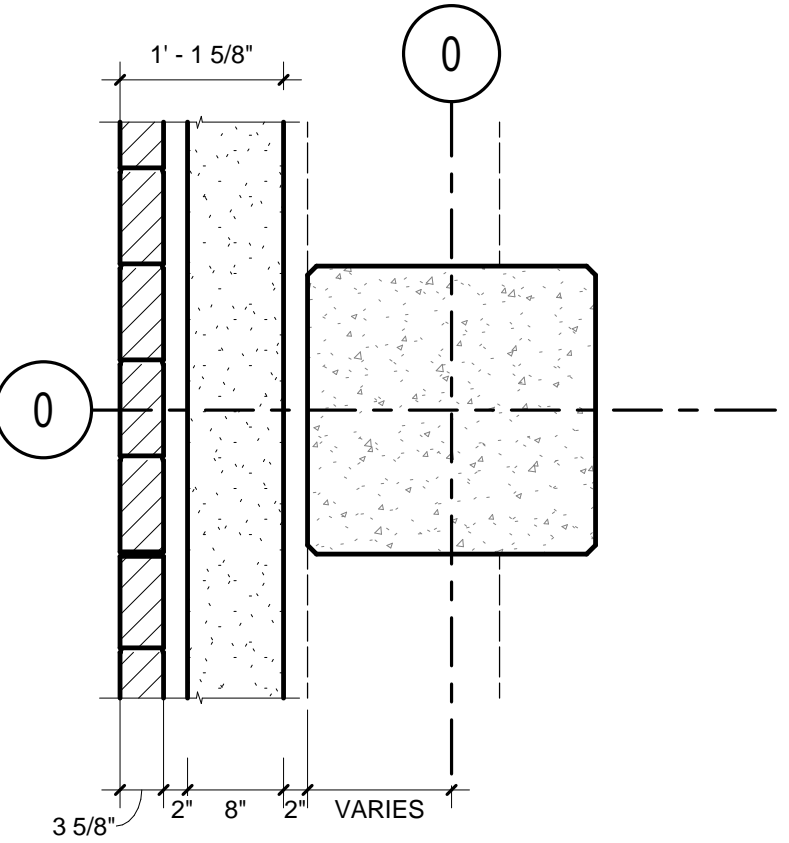
REFER TO STRUCTURAL DRAWINGS FOR COLUMN GRID DIMENSIONS

REFER TO STRUCTURAL DETAILS FOR ALL CONNECTIONS AND DETAILS OF PRECAST BACK TO CAST-IN-PLACE SLAB, BEAM AND COLUMNS

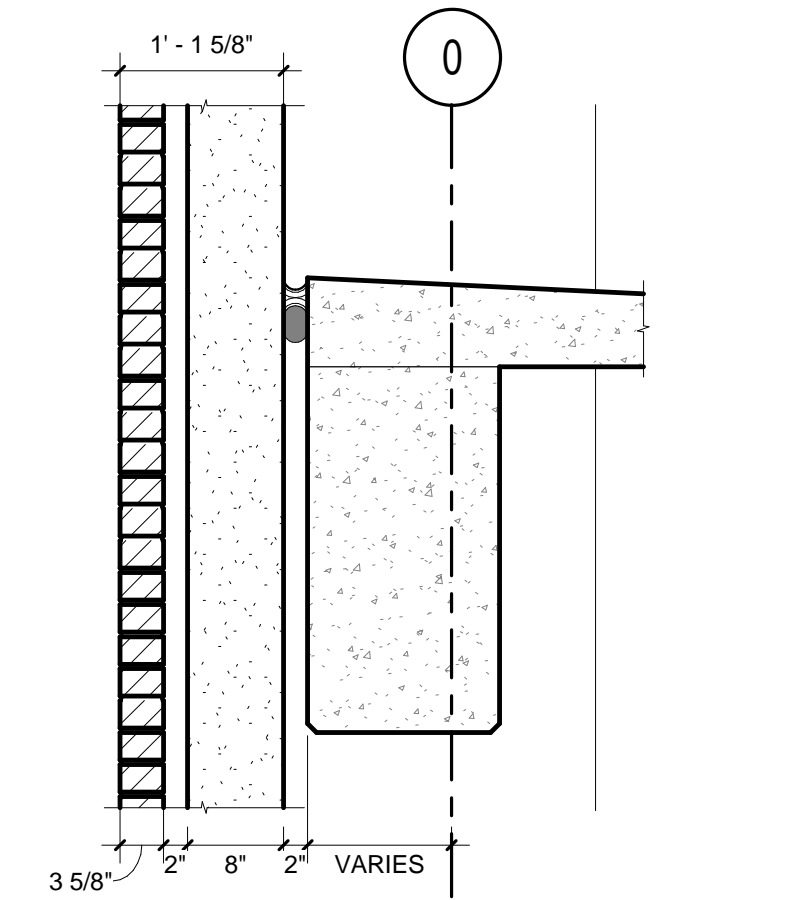
REFER TO ARCHITECTURAL ELEVATIONS AND SECTIONS FOR LOCATIONS OF MASONRY OPENINGS WITHIN CONTEXT OF ELEVATION

REFER TO STRUCTURAL DETAILS FOR FACE BRICK CONNECTIONS AND MASONRY TIES AND ALL SHELF ANGLES TIED BACK TO PRECAST

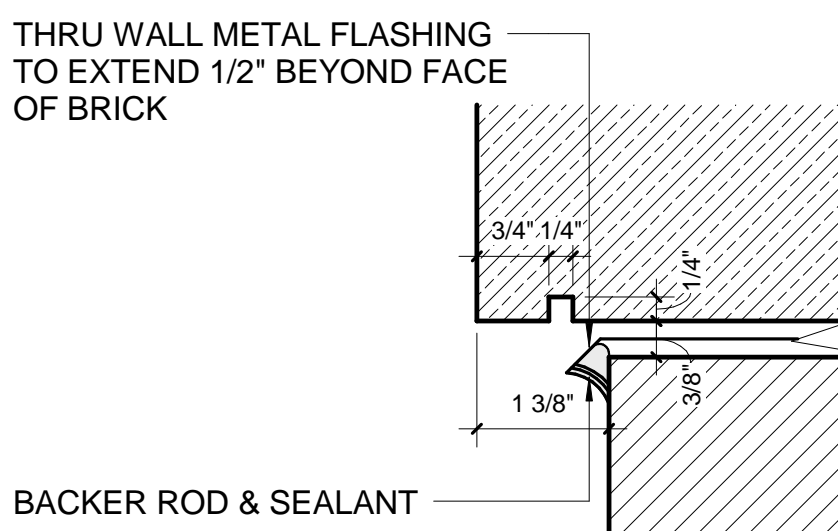
REFER TO STRUCTURAL DRAWINGS AND SPECIFICATIONS CONTINUOUS BACKROD AND SEALANT BETWEEN CAST-IN-PLACE STRUCTURE AND PRECAST BACK-UP



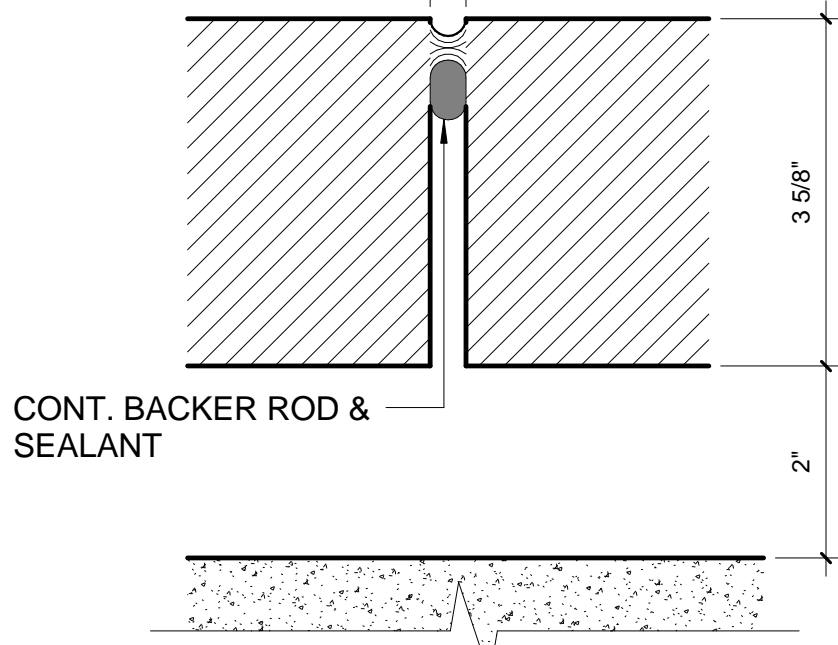
TYPICAL CAST-IN-PLACE TO PRECAST/FACE BRICK PLAN



TYPICAL CAST-IN-PLACE TO PRECAST/FACE BRICK SECTION



TYPICAL CAST STONE DRIP EDGE



TYPICAL VERTICAL BRICK EXPANSION JOINT

FINAL CONSTRUCTION DOCUMENTS	06/10/11
100% REVIEW SUBMISSION (NOT FOR CONSTRUCTION)	04/11/11
75% REVIEW SUBMISSION (NOT FOR CONSTRUCTION)	02/03/11
75% REVIEW SUBMISSION (NOT FOR CONSTRUCTION) - COST ESTIMATE	01/19/11
35% REVIEW SUBMISSION (NOT FOR CONSTRUCTION)	11/22/10
Revisions:	Date

### CONSULTANTS/ENGINEERS:

**KJWW ENGINEERING CONSULTANTS**  
Mechanical/Electrical/Plumbing Engineer  
622 26TH AVENUE  
ROCK ISLAND, ILLINOIS 61201  
309.788.0673 Telephone  
309.786.5967 Fax

**TERRACON**  
Geotechnical Engineer  
2640 12TH STREET SW  
CEDAR RAPIDS, IOWA 52404  
319.366.8321 Telephone  
319.366.0032 Fax

**GRAEF**  
Civil Engineer/Landscape Architect  
332 SOUTH MICHIGAN, SUITE 1400  
CHICAGO, ILLINOIS 60604-4507  
312.582.2020 Telephone  
312.939.7014 Fax

**WALKER PARKING CONSULTANTS**  
Structural Engineer  
505 DAVIS ROAD  
ELGIN, ILLINOIS 60123  
847.697.2640 Telephone  
847.697.7439 Fax

**FAITHFUL+GOULD**  
Cost Management  
222 SOUTH RIVERSIDE PLAZA, SUITE 2240  
CHICAGO, ILLINOIS 60606  
312.612.6319 Telephone  
312.655.9037 Fax

### ARCHITECT:

**Loebl Schlossman & Hackl**  
Architecture • Planning • Interiors

Copyright © 2011 Loebl Schlossman & Hackl Inc.

233 North Michigan Avenue  
Suite 3000  
Chicago, Illinois 60601

312.565.1800 Telephone  
312.565.5912 Facsimile  
www.lshdesign.com

Drawing Title	WALL SECTIONS & DETAILS - WEST
Approved: Project Director	Iowa City VA Healthcare System Department of Veterans Affairs Medical Center

Project Title	400 CAR PARKING GARAGE
Location	IOWA CITY, IA
Date	06/10/2011
Checked	PS/JP
Drawn	DM

Project Number	636-402
Building Number	43
Drawing Number	A28
Dwg 61 of 152	

Office of  
Construction  
and Facilities  
Management

