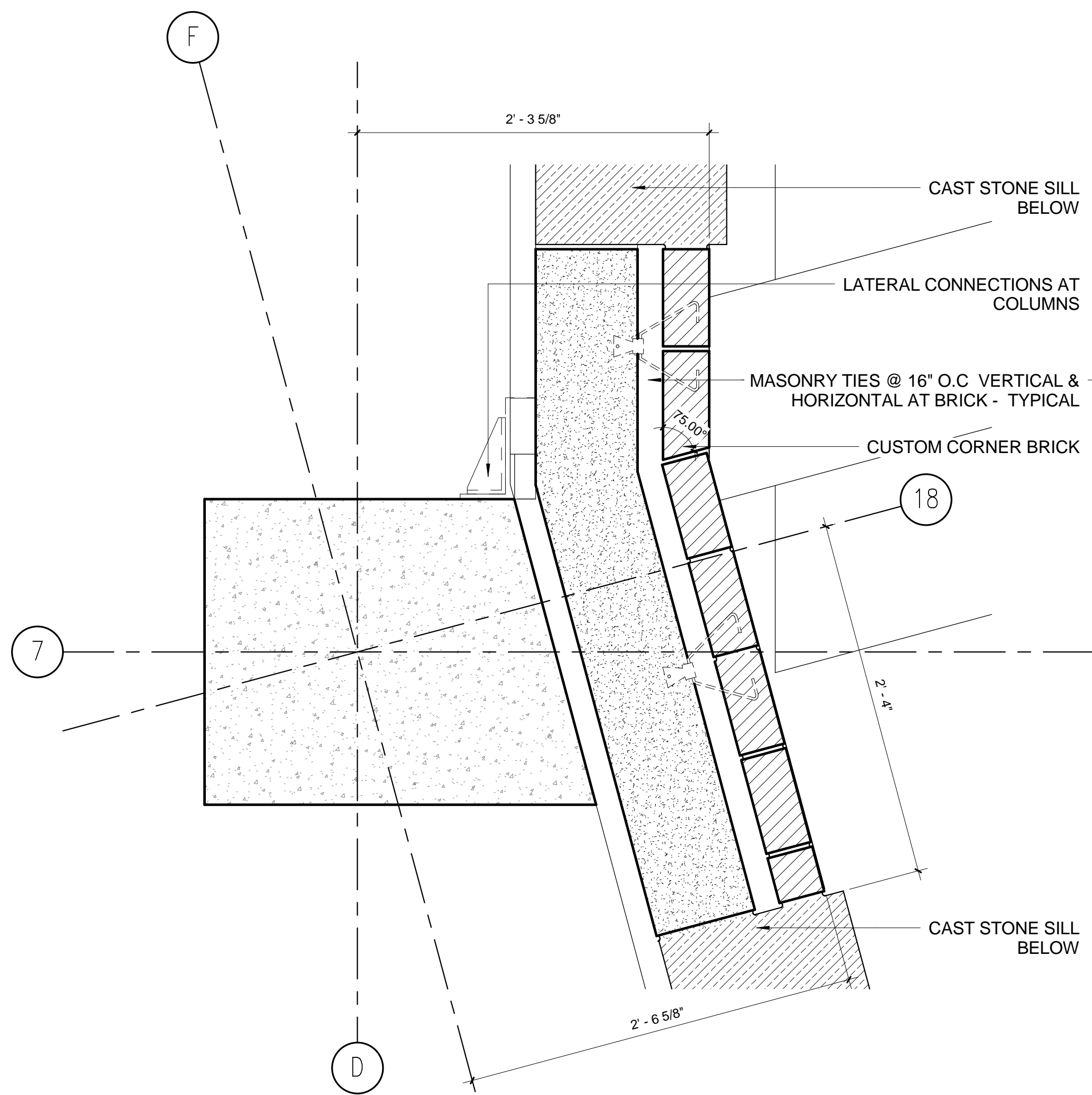
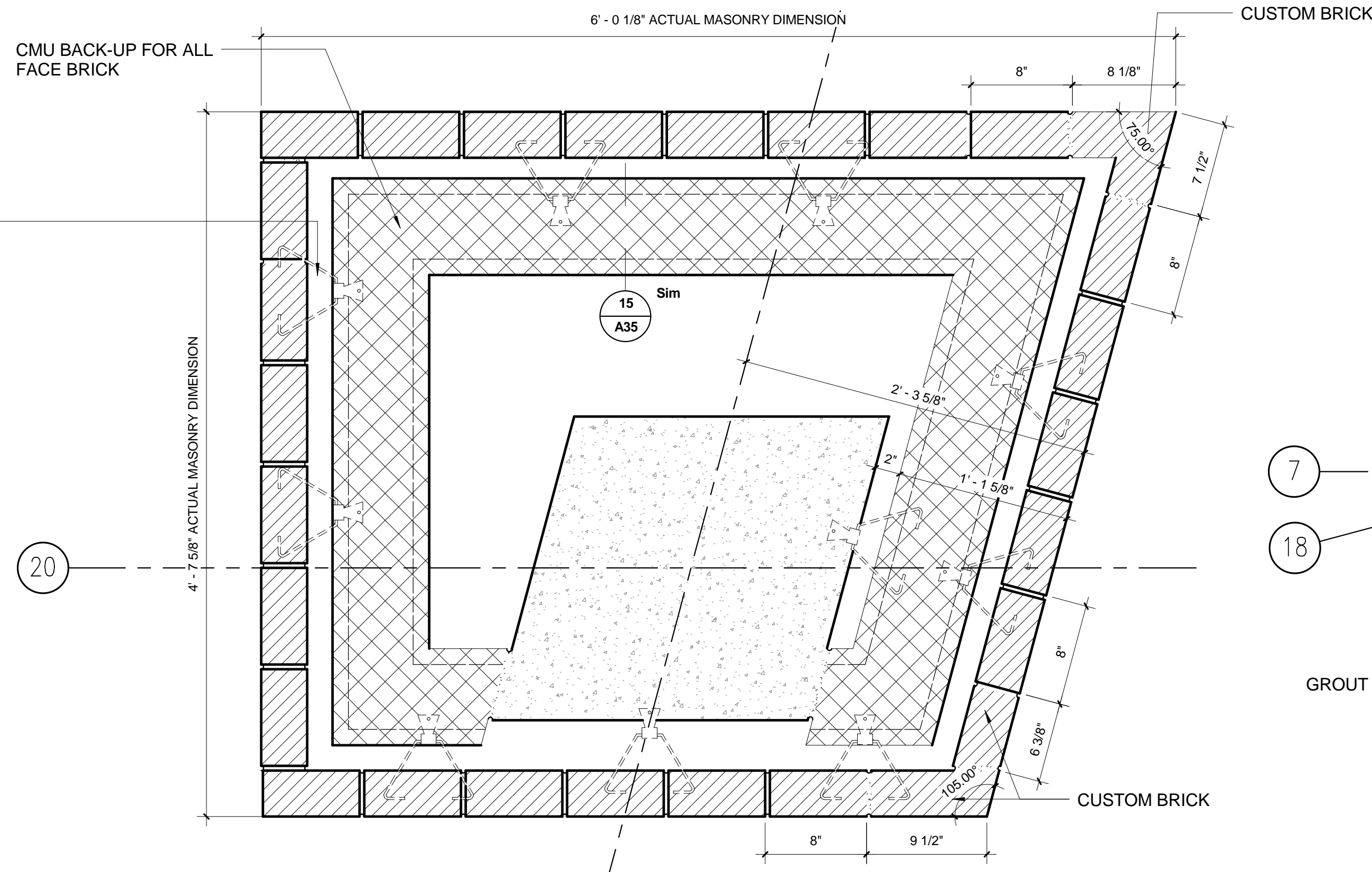


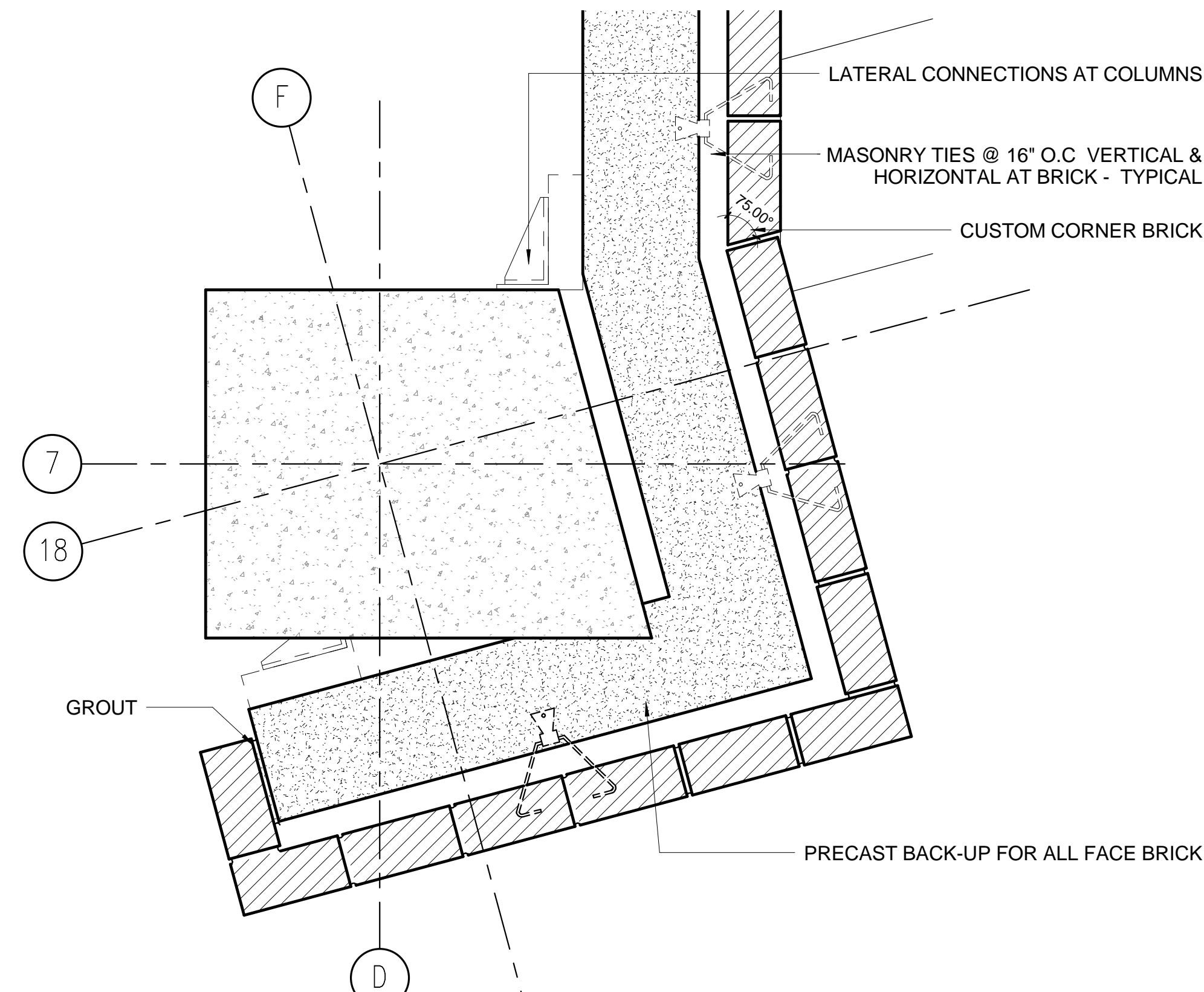
three eighths inch = one foot
one eighth inch = one foot
one quarter inch = one foot
three quarters inch = one foot
one half inch = one foot
one inch = one foot
one and one half inches = one foot
two inches = one foot
three inches = one foot
four inches = one foot
five inches = one foot
six inches = one foot
seven inches = one foot
eight inches = one foot
nine inches = one foot
ten inches = one foot
eleven inches = one foot
twelve inches = one foot
thirteen inches = one foot
fourteen inches = one foot
fifteen inches = one foot
sixteen inches = one foot
seventeen inches = one foot
eighteen inches = one foot
nineteen inches = one foot
twenty inches = one foot
twenty one inches = one foot
twenty two inches = one foot
twenty three inches = one foot
twenty four inches = one foot
twenty five inches = one foot
twenty six inches = one foot
twenty seven inches = one foot
twenty eight inches = one foot
twenty nine inches = one foot
thirty inches = one foot
thirty one inches = one foot
thirty two inches = one foot
thirty three inches = one foot
thirty four inches = one foot
thirty five inches = one foot
thirty six inches = one foot
thirty seven inches = one foot
thirty eight inches = one foot
thirty nine inches = one foot
forty inches = one foot
forty one inches = one foot
forty two inches = one foot
forty three inches = one foot
forty four inches = one foot
forty five inches = one foot
forty six inches = one foot
forty seven inches = one foot
forty eight inches = one foot
forty nine inches = one foot
fifty inches = one foot
fifty one inches = one foot
fifty two inches = one foot
fifty three inches = one foot
fifty four inches = one foot
fifty five inches = one foot
fifty six inches = one foot
fifty seven inches = one foot
fifty eight inches = one foot
fifty nine inches = one foot
sixty inches = one foot
sixty one inches = one foot
sixty two inches = one foot
sixty three inches = one foot
sixty four inches = one foot
sixty five inches = one foot
sixty six inches = one foot
sixty seven inches = one foot
sixty eight inches = one foot
sixty nine inches = one foot
seventy inches = one foot
seventy one inches = one foot
seventy two inches = one foot
seventy three inches = one foot
seventy four inches = one foot
seventy five inches = one foot
seventy six inches = one foot
seventy seven inches = one foot
seventy eight inches = one foot
seventy nine inches = one foot
eighty inches = one foot
eighty one inches = one foot
eighty two inches = one foot
eighty three inches = one foot
eighty four inches = one foot
eighty five inches = one foot
eighty six inches = one foot
eighty seven inches = one foot
eighty eight inches = one foot
eighty nine inches = one foot
ninety inches = one foot
ninety one inches = one foot
ninety two inches = one foot
ninety three inches = one foot
ninety four inches = one foot
ninety five inches = one foot
ninety six inches = one foot
ninety seven inches = one foot
ninety eight inches = one foot
ninety nine inches = one foot
one hundred inches = one foot



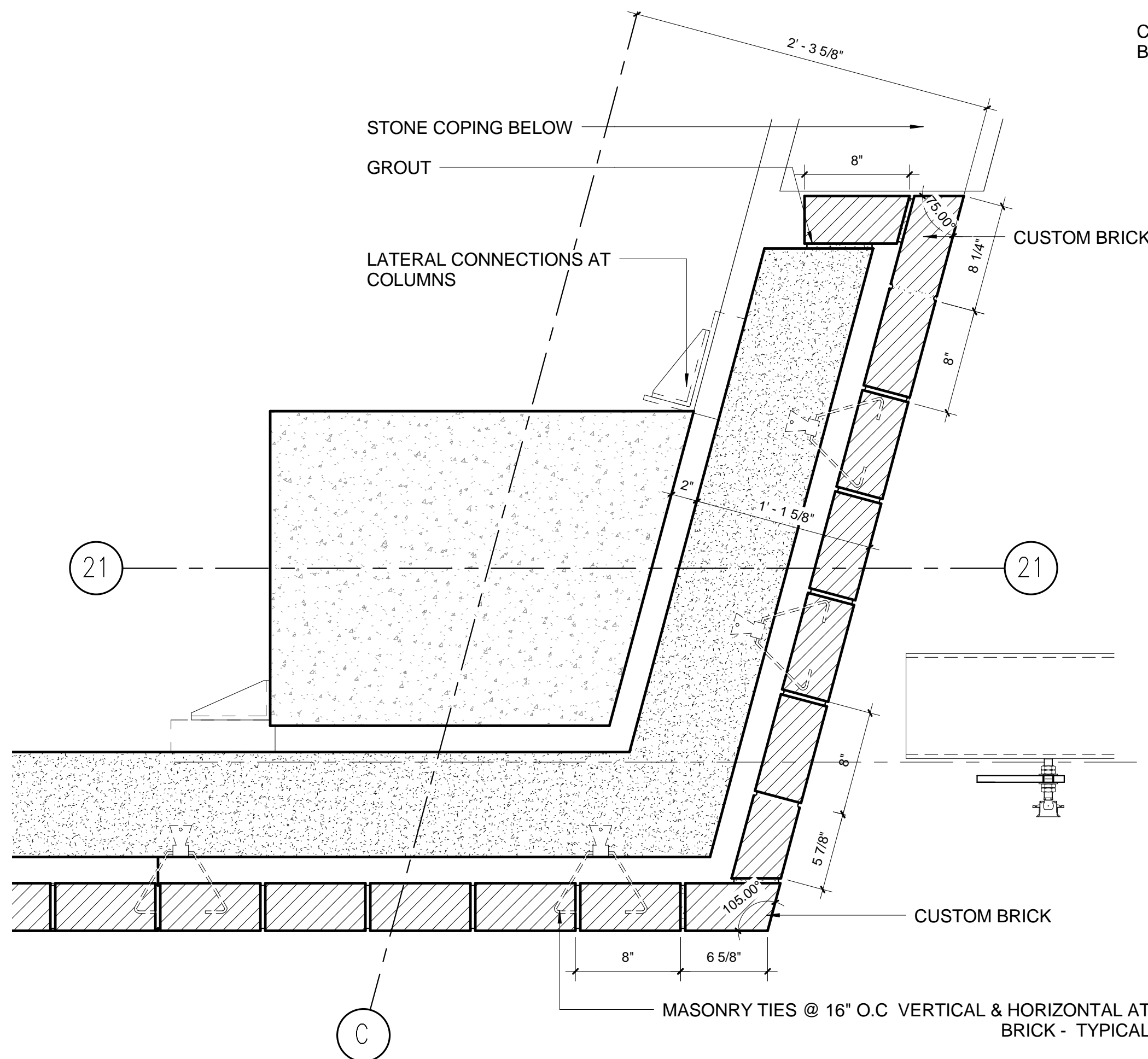
3 PLAN DETAIL @ COLUMN 18F 3RD TIER
1 1/2" = 1'-0"



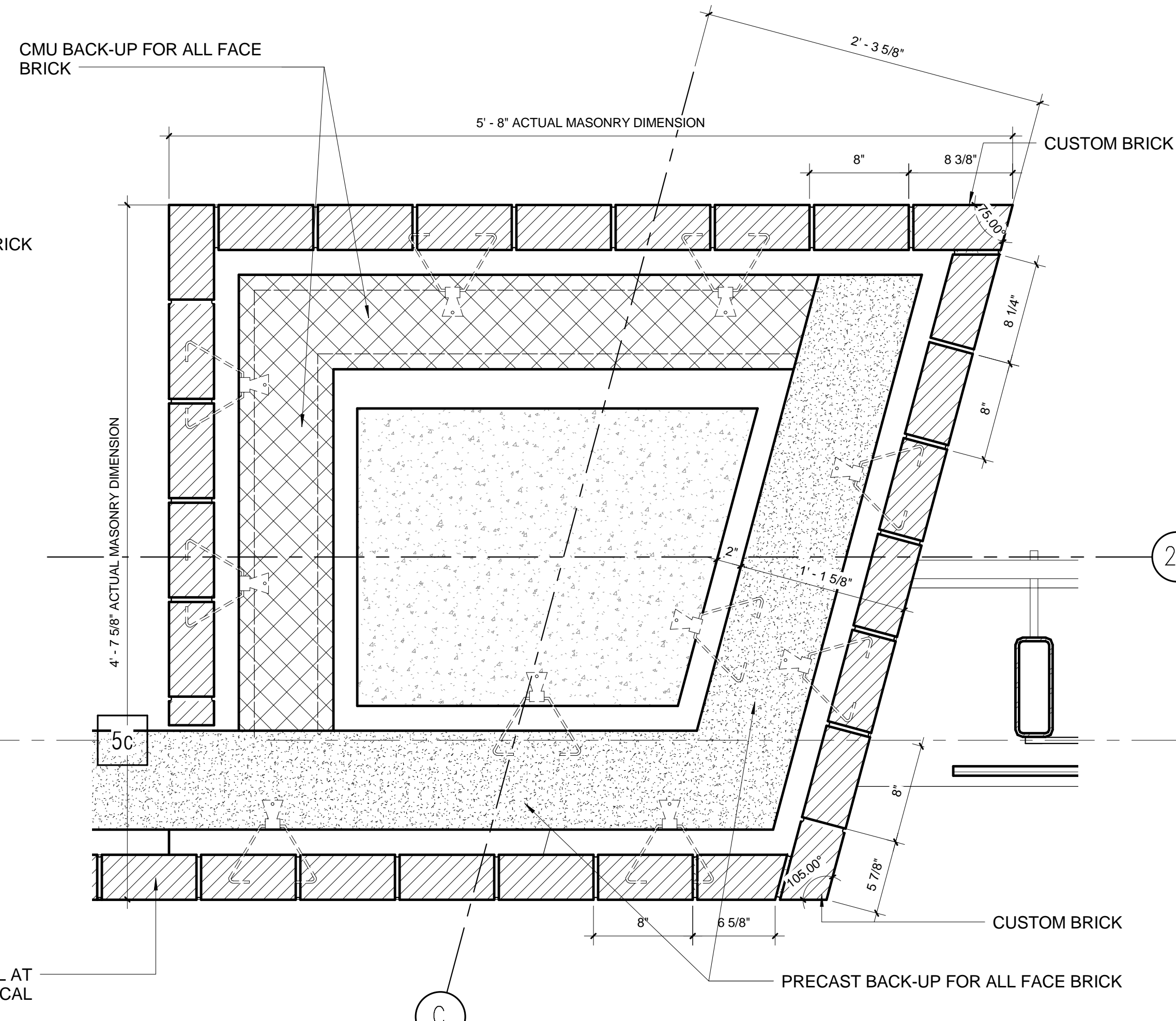
2 PLAN DETAIL @ COLUMN C20 GR. TIER
1 1/2" = 1'-0"



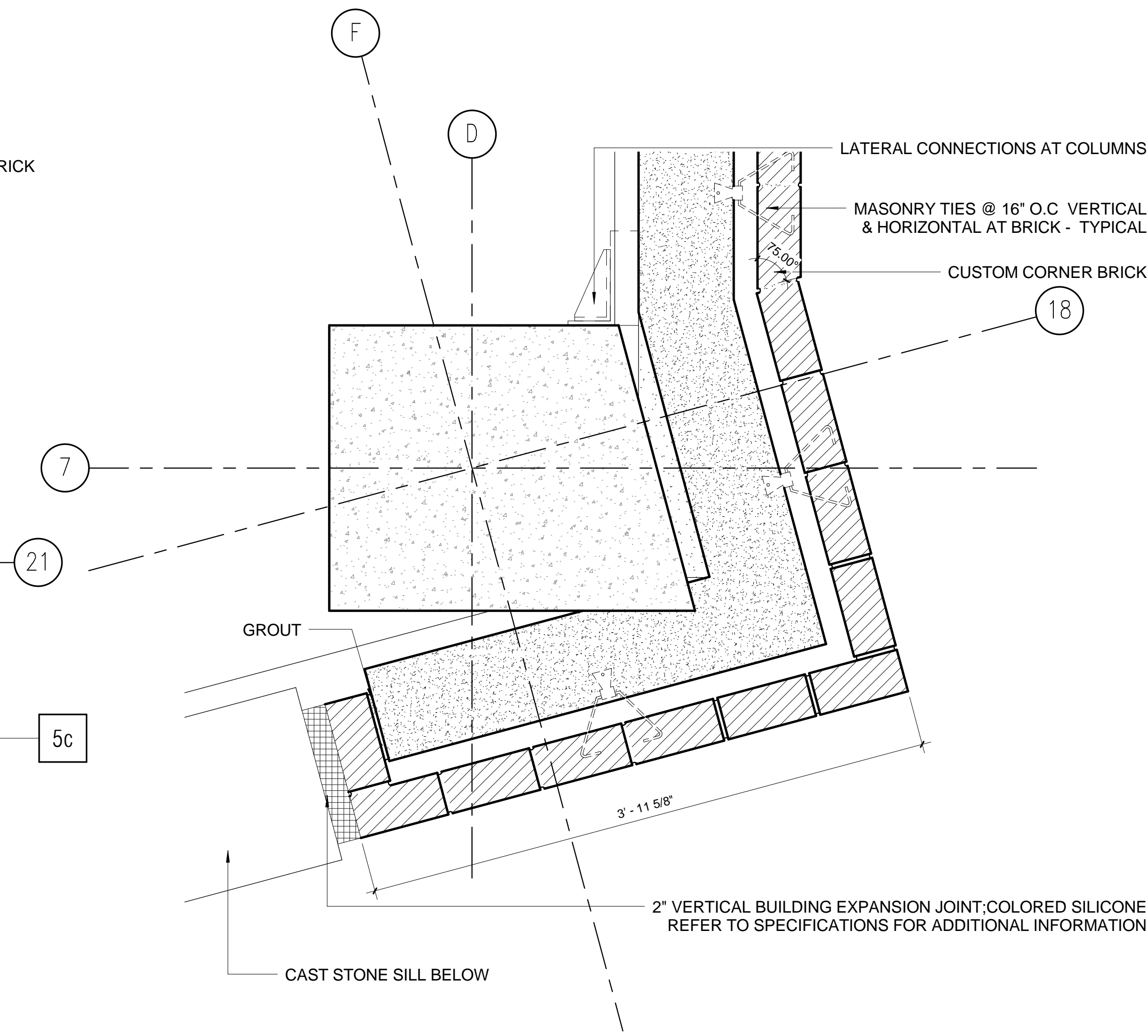
1 PLAN DETAIL @ COLUMN 18F GROUND TIER
1 1/2" = 1'-0"



6 PLAN DETAIL @ COLUMN C21 2ND & 3RD TIER
1 1/2" = 1'-0"



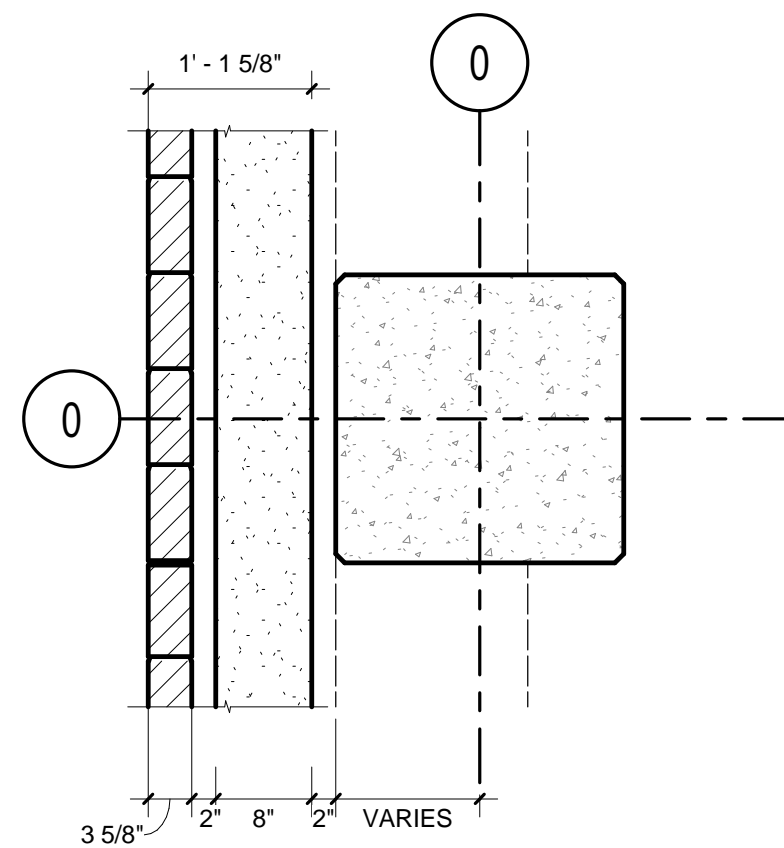
5 PLAN DETAIL @ COLUMN C21 GR. TIER
1 1/2" = 1'-0"



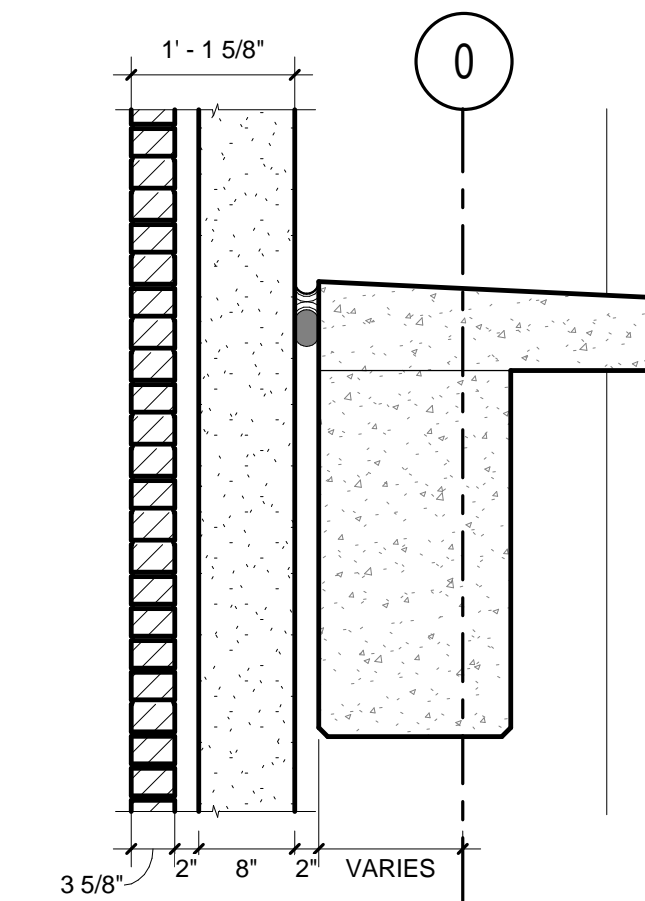
4 PLAN DETAIL @ COLUMN 18F 2ND TIER
1 1/2" = 1'-0"

CONSTRUCTION DETAIL NOTES

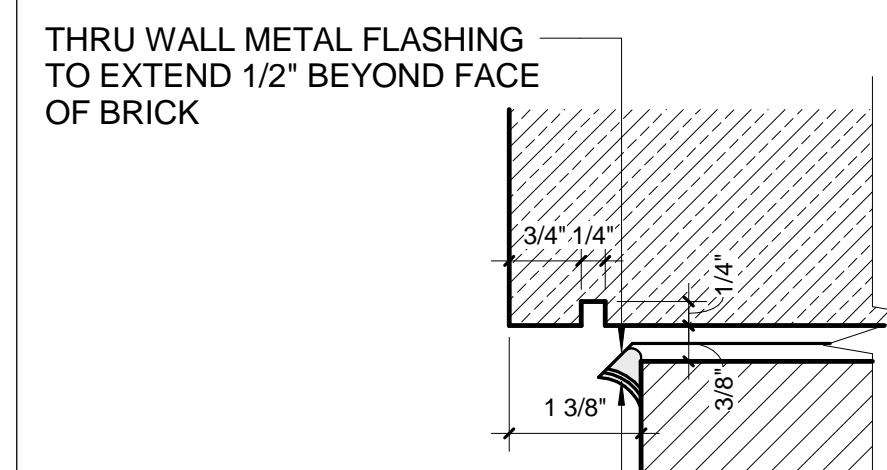
REFER TO STRUCTURAL DRAWINGS FOR PIER AND FOUNDATION INFORMATION
REFER TO STRUCTURAL DRAWINGS FOR COLUMN GRID DIMENSIONS
REFER TO STRUCTURAL DETAILS FOR ALL CONNECTIONS AND DETAILS OF PRECAST BACK TO CAST-IN-PLACE SLAB, BEAM AND COLUMNS
REFER TO ARCHITECTURAL ELEVATIONS AND SECTIONS FOR LOCATIONS OF MASONRY OPENINGS WITHIN CONTEXT OF ELEVATION
REFER TO STRUCTURAL DETAILS FOR FACE BRICK CONNECTIONS AND MASONRY TIES AND ALL SHELF ANGLES TIED BACK TO PRECAST
REFER TO STRUCTURAL DRAWINGS AND SPECIFICATIONS CONTINUOUS BACKROD AND SEALANT BETWEEN CAST-IN-PLACE STRUCTURE AND PRECAST BACK-UP



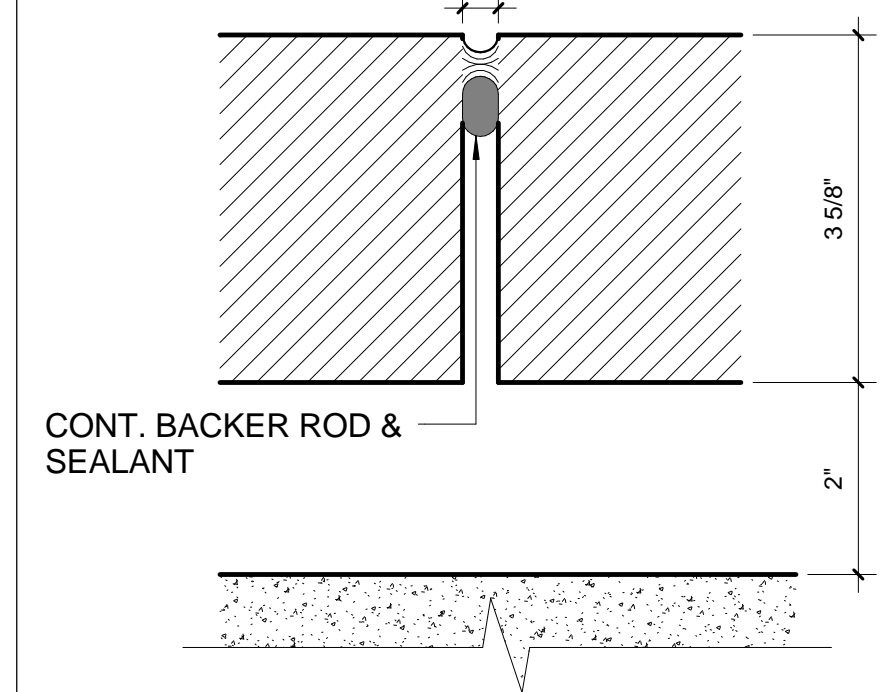
TYPICAL CAST-IN-PLACE TO PRECAST/FACE BRICK PLAN



TYPICAL CAST-IN-PLACE TO PRECAST/FACE BRICK SECTION



TYPICAL CAST STONE DRIP EDGE



TYPICAL VERTICAL BRICK EXPANSION JOINT

FINAL CONSTRUCTION DOCUMENTS	06/10/11
100% REVIEW SUBMISSION (NOT FOR CONSTRUCTION)	04/11/11
75% REVIEW SUBMISSION (NOT FOR CONSTRUCTION)	02/03/11
75% REVIEW SUBMISSION (NOT FOR CONSTRUCTION) - COST ESTIMATE	01/19/11
35% REVIEW SUBMISSION (NOT FOR CONSTRUCTION)	11/22/10
Revisions:	Date

CONSULTANTS/ENGINEERS:

KJWW ENGINEERING CONSULTANTS
Mechanical/Electrical/Plumbing Engineer
623 26TH AVENUE
ROCK ISLAND, ILLINOIS 61201
309.788.0673 Telephone
309.786.5967 Fax

TERRACON
Geotechnical Engineer
2640 12TH STREET SW
CEDAR RAPIDS, IOWA 52404
319.366.8321 Telephone
319.366.0032 Fax

GRAEF
Civil Engineer/Landscape Architect
332 SOUTH MICHIGAN, SUITE 1400
CHICAGO, ILLINOIS 60604-4507
312.582.2020 Telephone
312.939.7014 Fax

WALKER PARKING CONSULTANTS
Structural Engineer
505 DAVIS ROAD
ELGIN, ILLINOIS 60123
847.697.2640 Telephone
847.697.7439 Fax

FAITHFUL+GOULD
Cost Management
222 SOUTH RIVERSIDE PLAZA, SUITE 2240
CHICAGO, ILLINOIS 60606
312.612.6319 Telephone
312.655.9037 Fax

ARCHITECT:

Loebl Schlossman & Hackl
Architecture • Planning • Interiors

Copyright © 2011 Loebl Schlossman & Hackl Inc.

233 North Michigan Avenue
Suite 3000
Chicago, Illinois 60601
312.565.1800 Telephone
312.565.3912 Facsimile
www.lshdesign.com

Drawing Title
ENLARGED COLUMN COVER DETAILS - NORTH ENTRANCE
Approved: Project Director
Iowa City VA Healthcare System
Department of Veterans Affairs Medical Center

Project Title
400 CAR PARKING GARAGE

Location
IOWA CITY, IA

Date
06/10/2011

Checked
PS/JP

Drawn
DM

Project Number
636-402

Building Number
43

Drawing Number
A18

Dwg 51 of 152

Office of
Construction
and Facilities
Management

Department of
Veterans Affairs