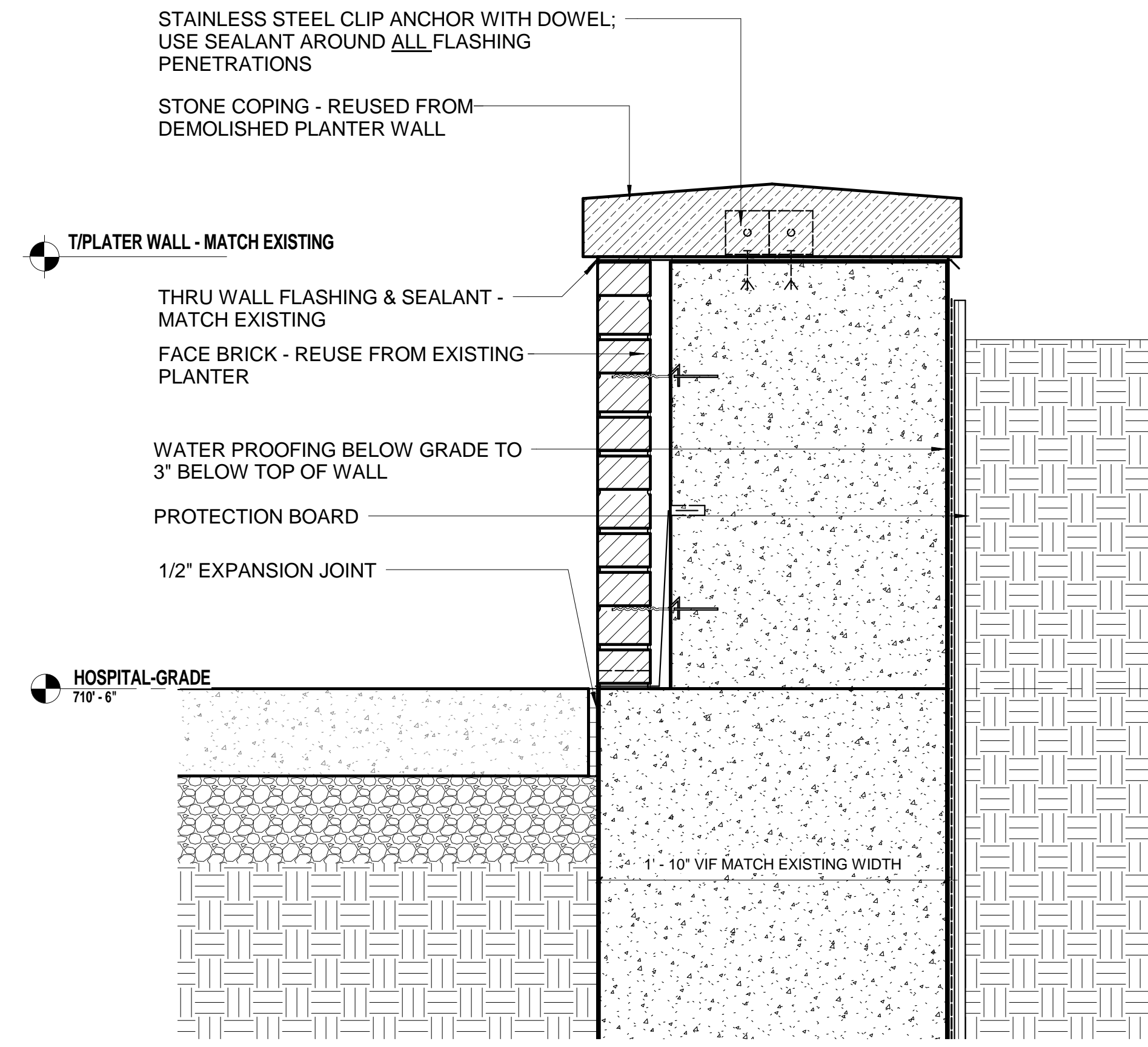
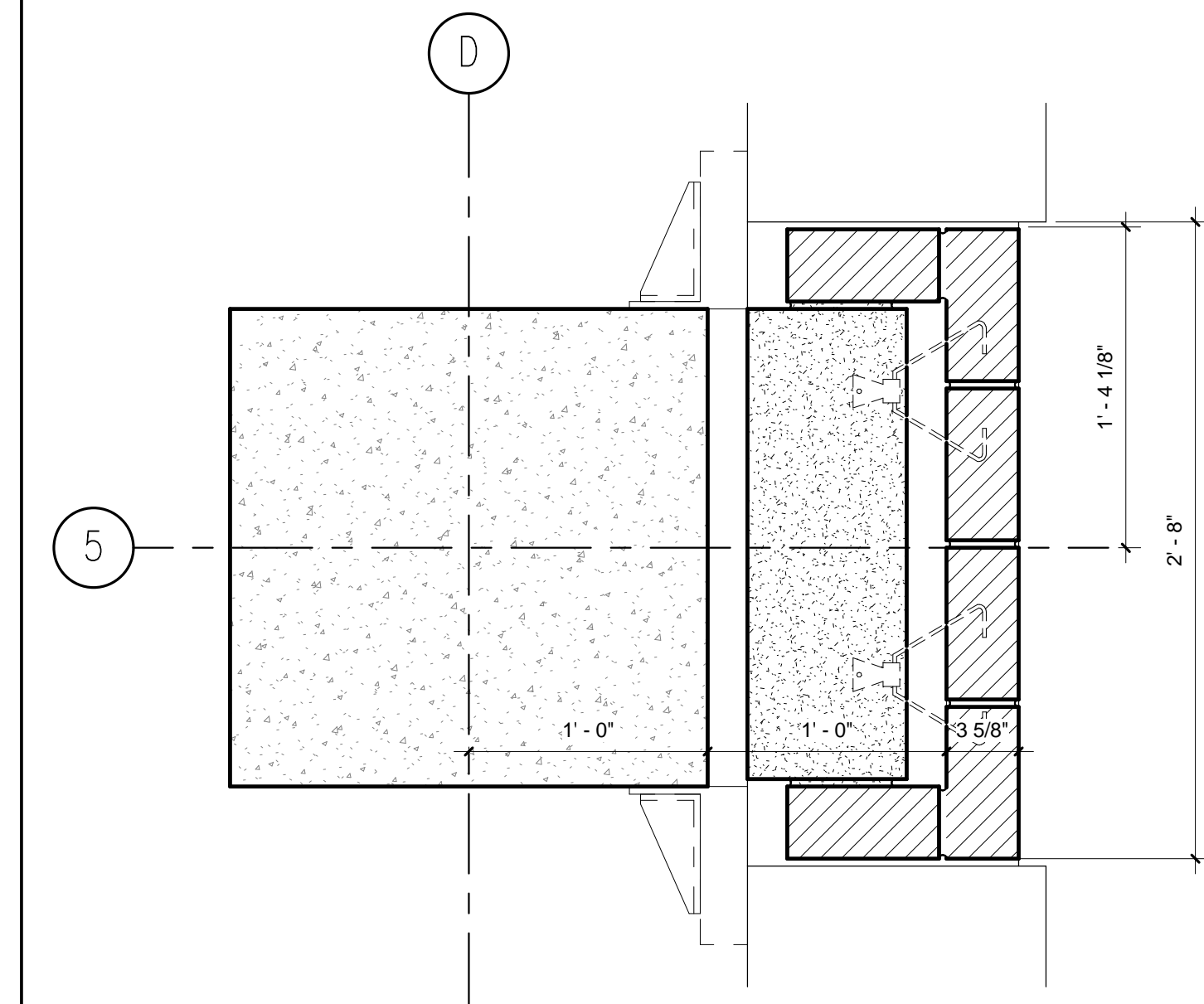


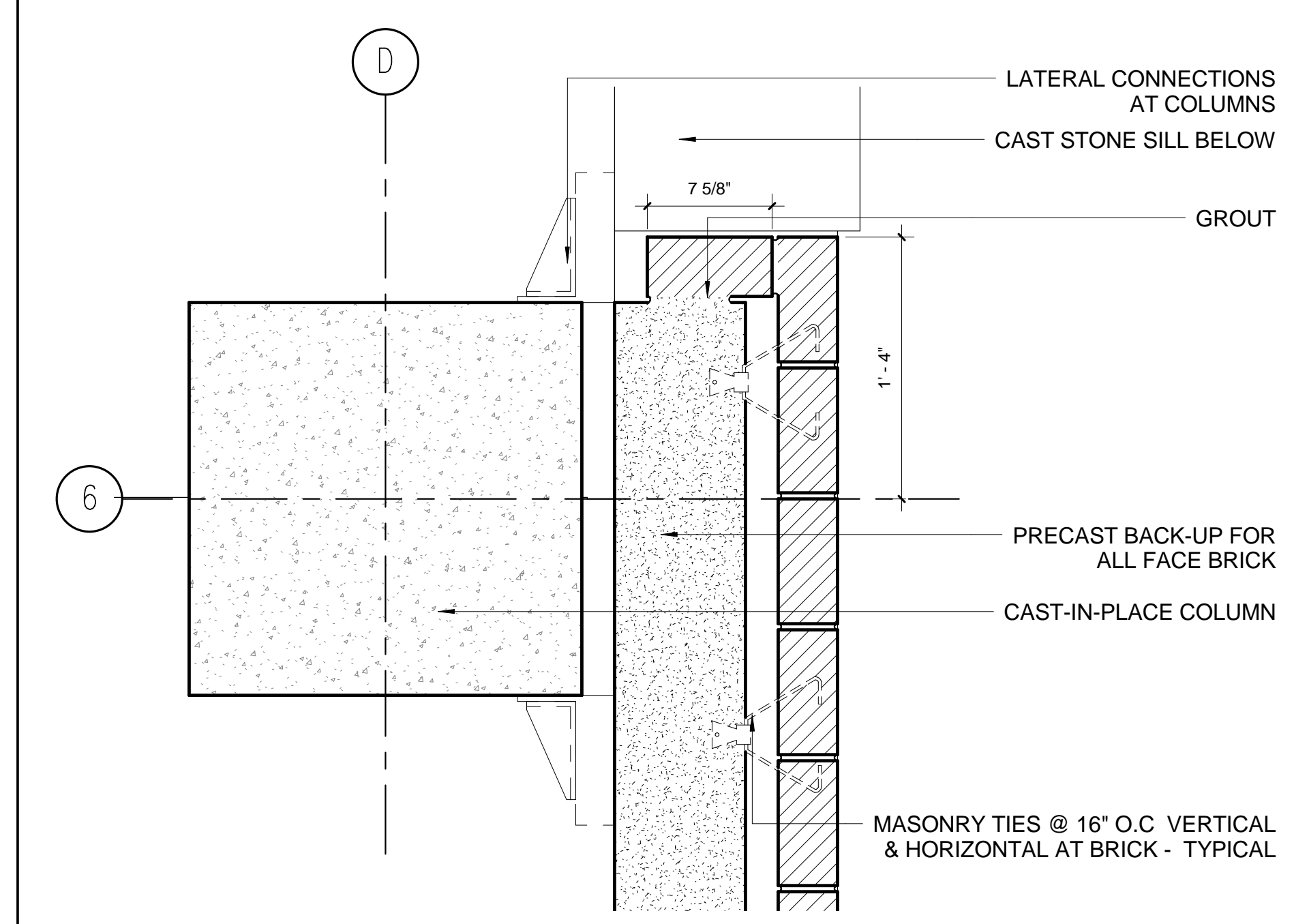
three inches = one foot  
one and one half inches = one foot  
one inch = one foot  
three quarters inch = one foot  
one half inch = one foot  
three eighths inch = one foot  
one quarter inch = one foot  
one eighth inch = one foot



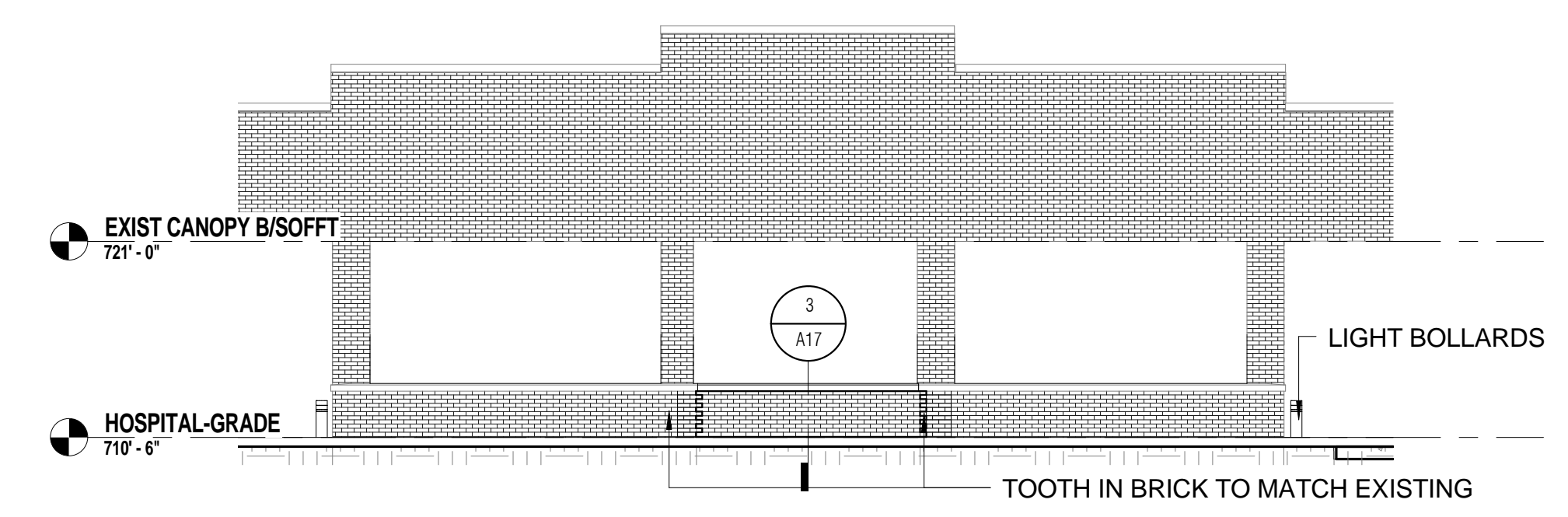
3 SECTION DETAIL @ EXISTING HOSPITAL PLANTER  
1 1/2" = 1'-0" A17



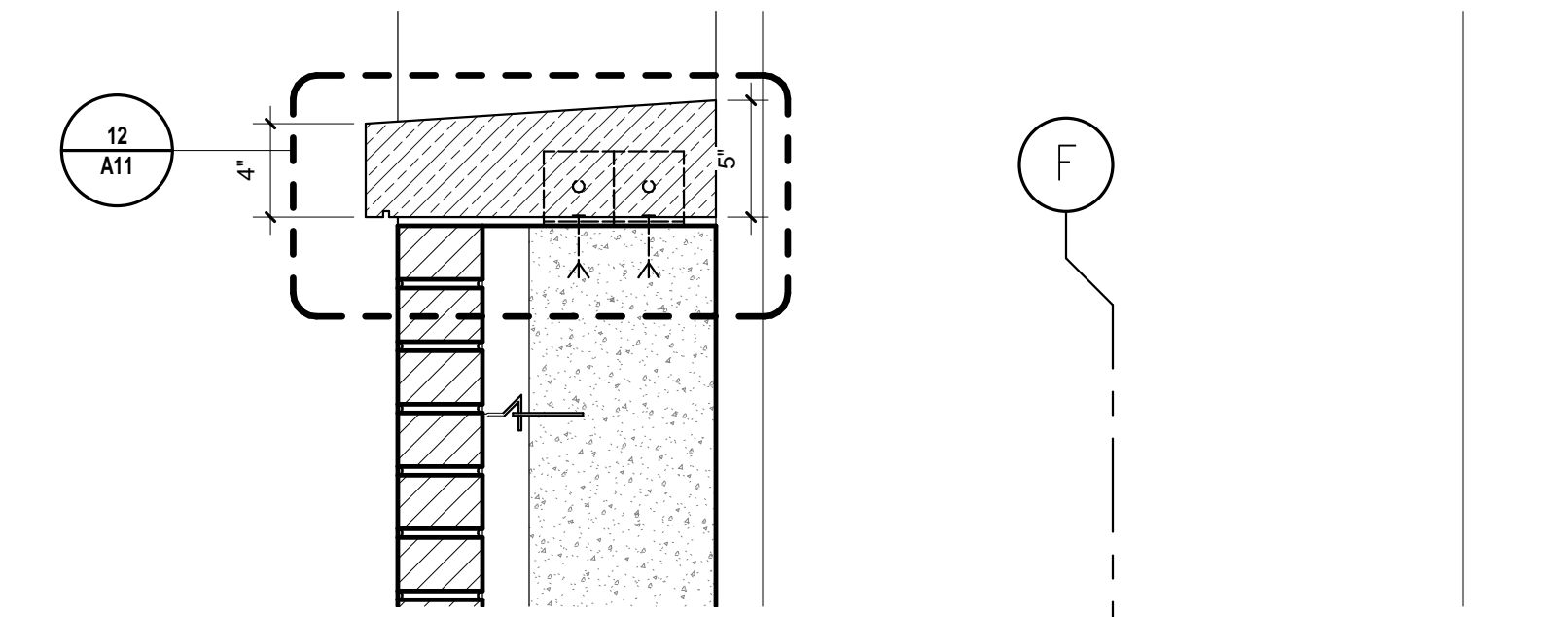
6 PLAN DETAIL @ COLUMN D5  
1 1/2" = 1'-0" A17



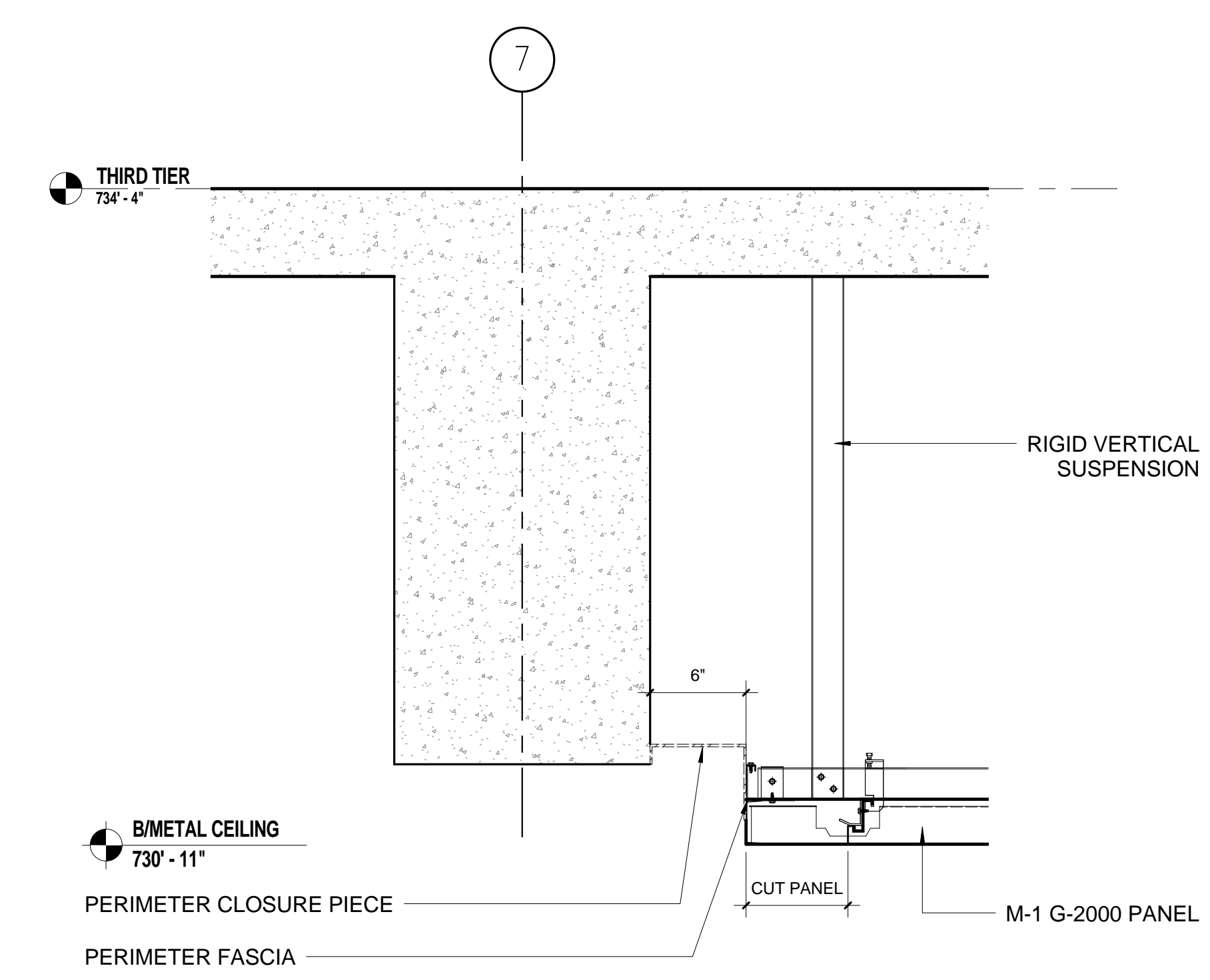
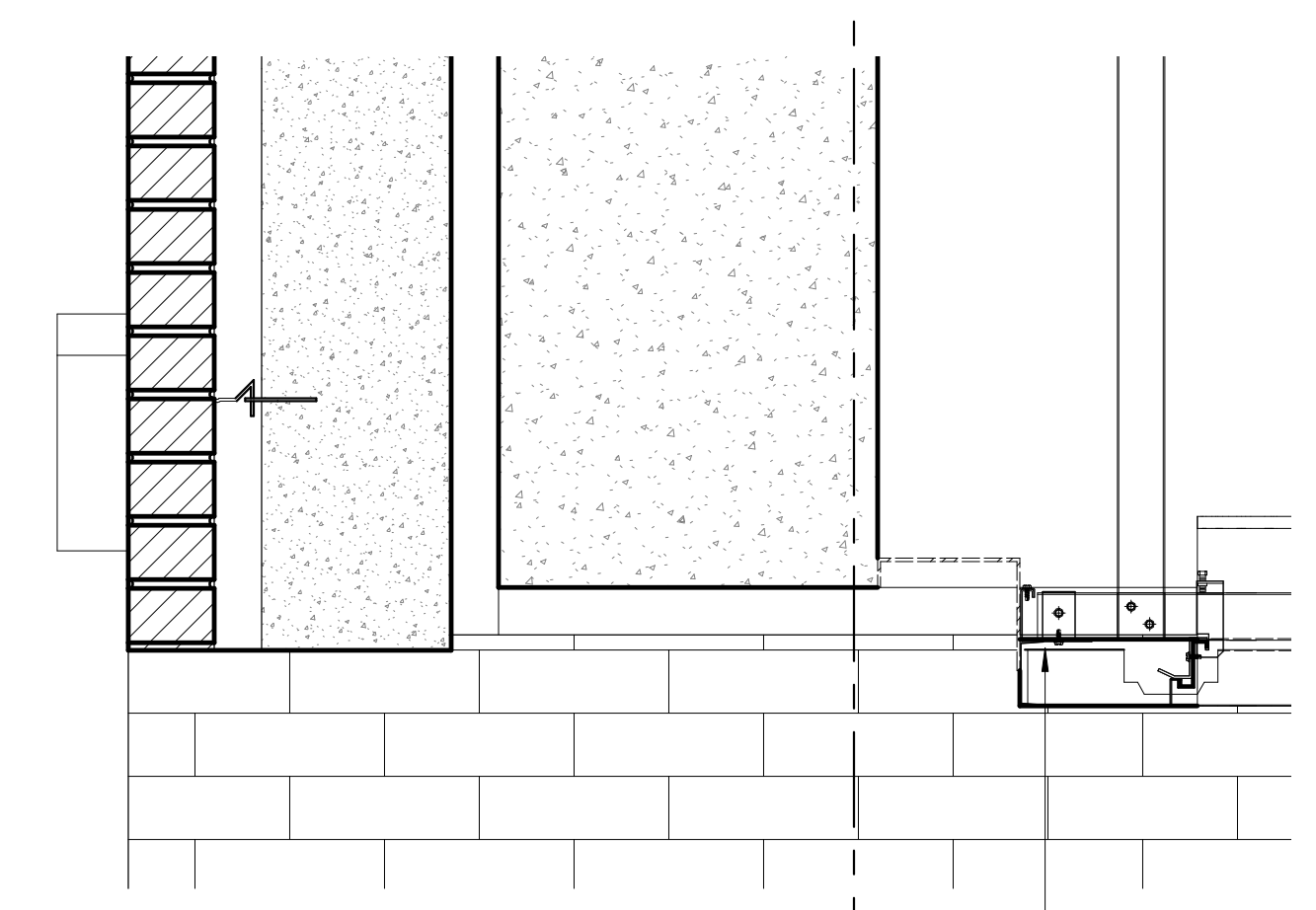
10 PLAN DETAIL @ COLUMN D6  
1 1/2" = 1'-0" A17



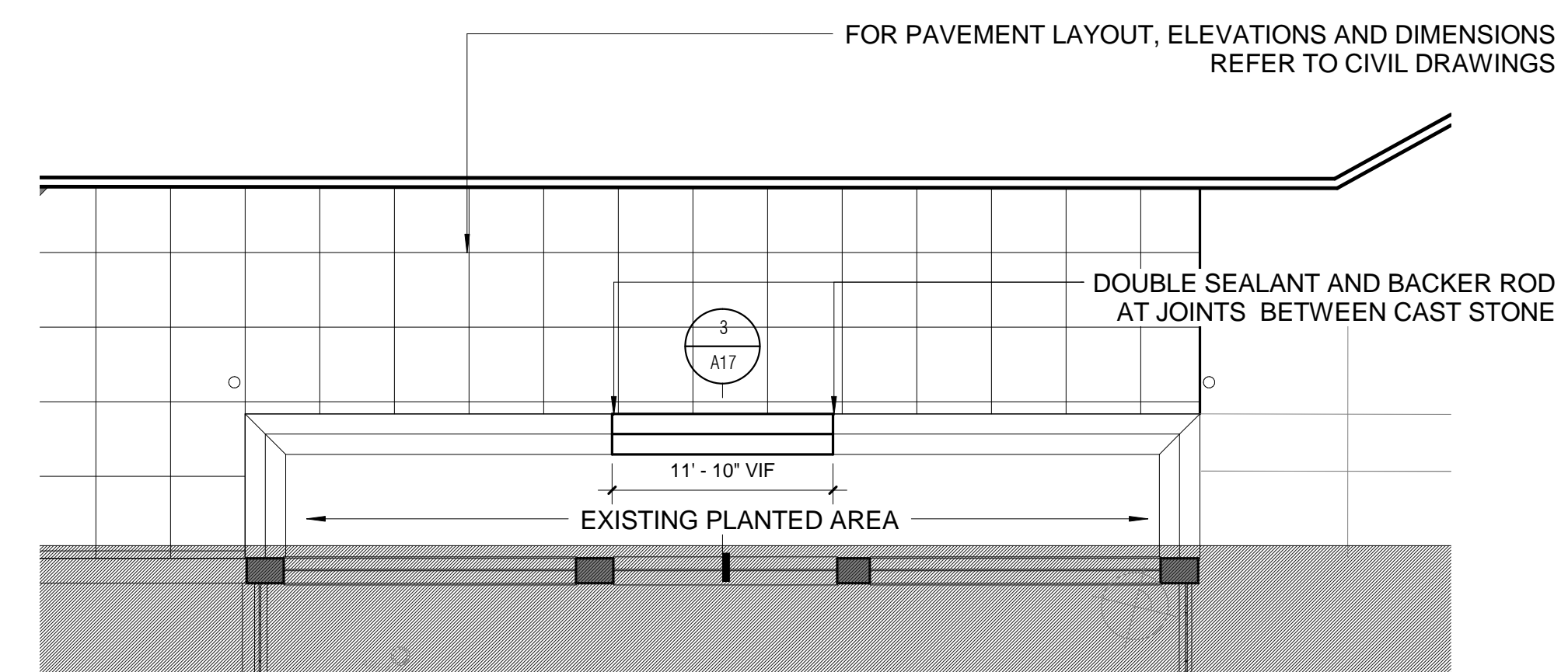
2 ENLARGED ELEVATION @ EXISTING HOSPITAL PLANTER  
1/8" = 1'-0" A1



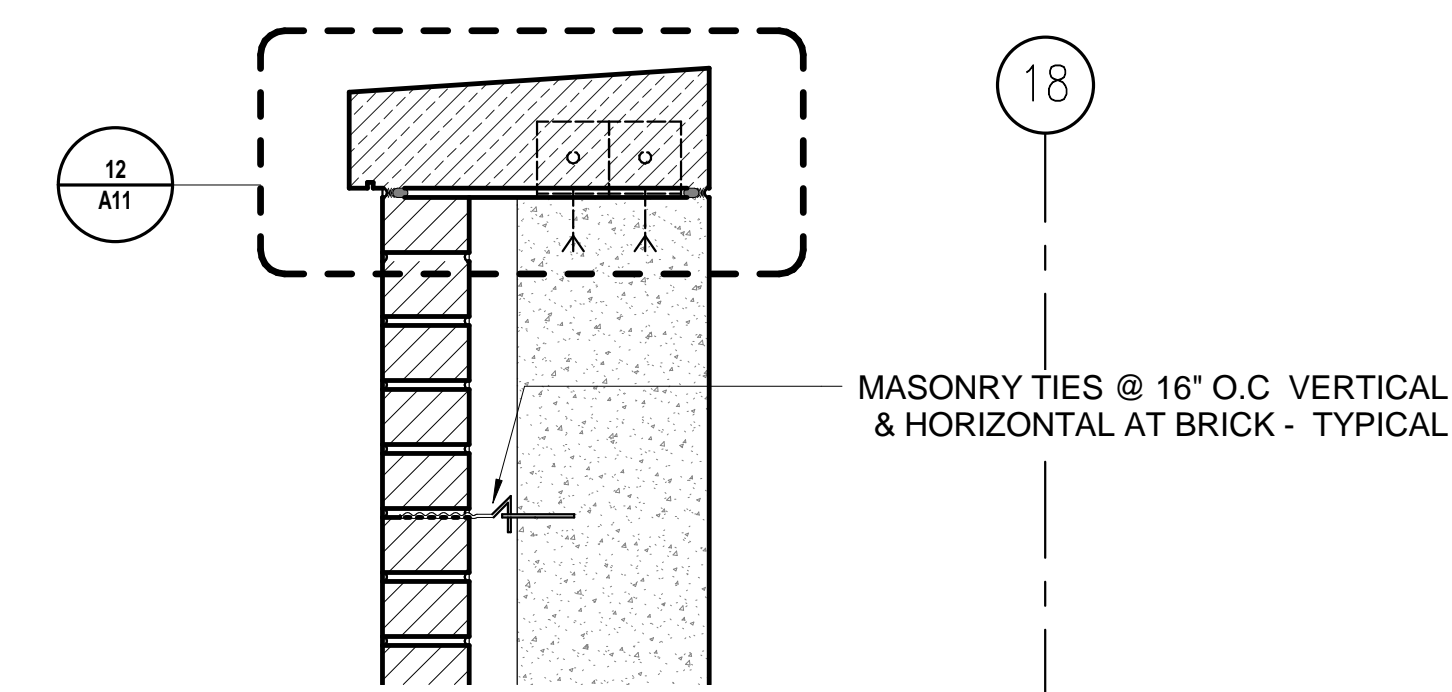
5 SECTION DETAIL @ EAST ENTRANCE - METAL CEILING - DEDUCT  
ALTERNATE  
1 1/2" = 1'-0" A2.1



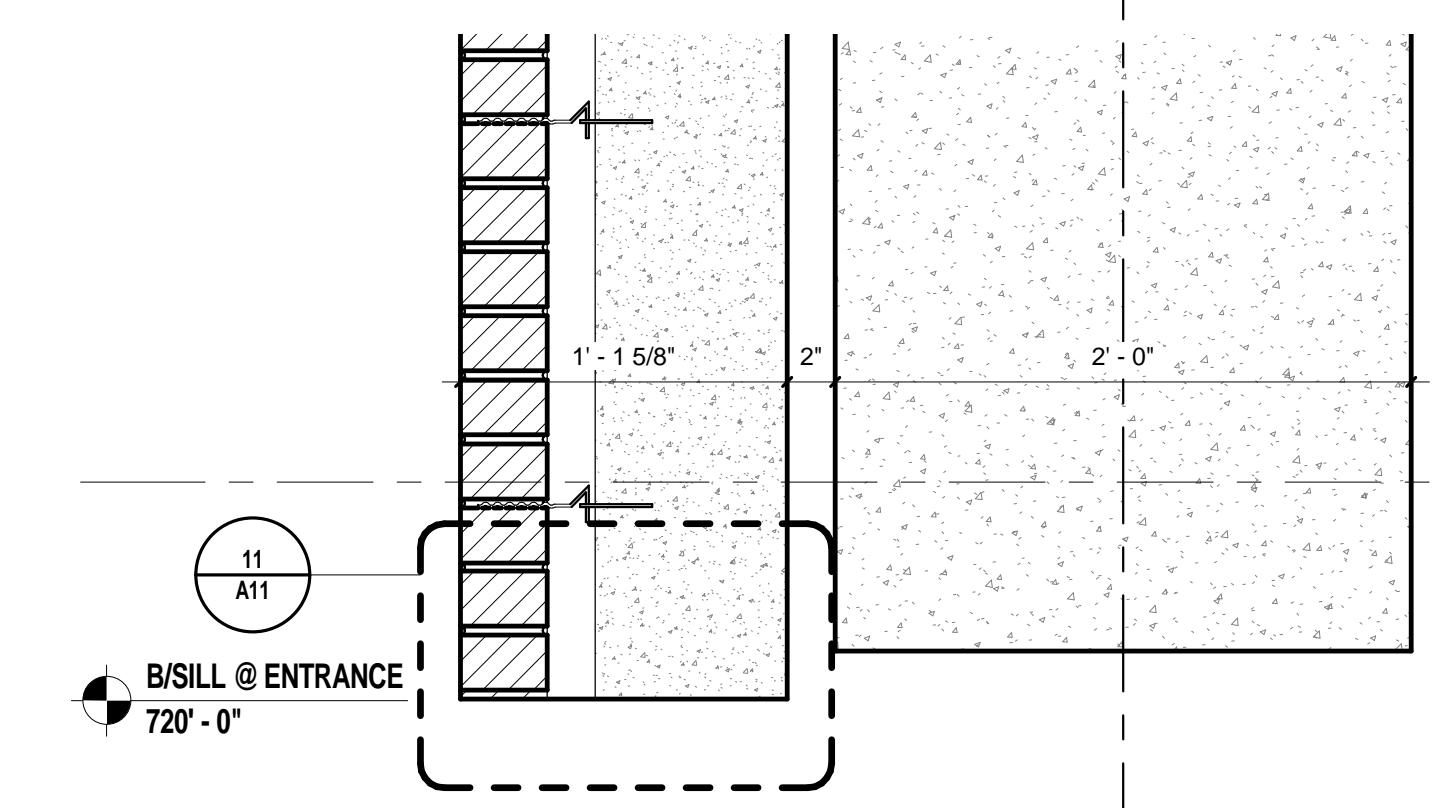
8 METAL CEILING - DEDUCT ALTERNATE  
1 1/2" = 1'-0" A2.1



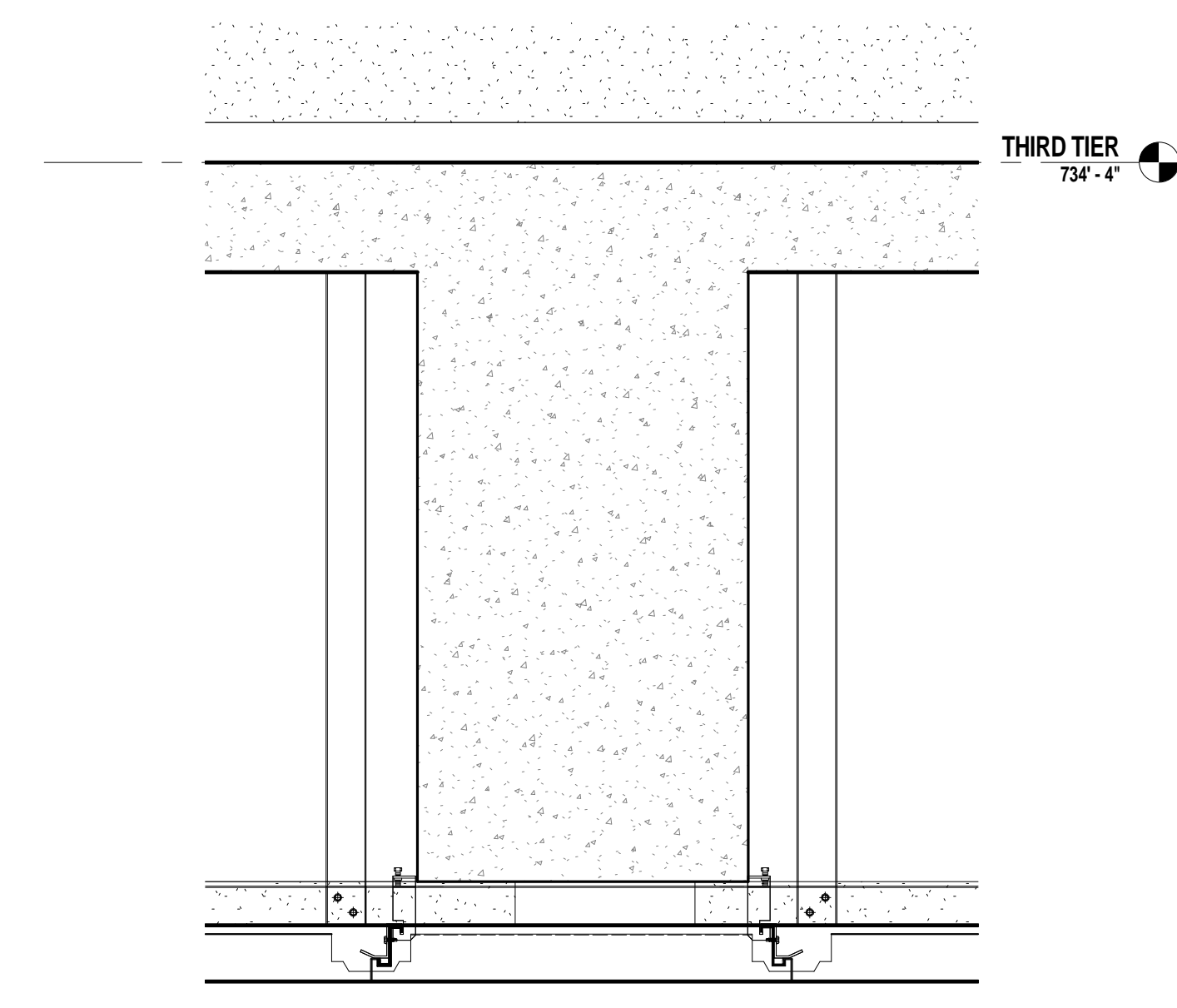
1 ENLARGED FLOOR PLAN @ EXISTING HOSPITAL PLANTER  
1/8" = 1'-0" A1



4 SECTION DETAIL @ EAST ENTRANCE  
1 1/2" = 1'-0" A2



7 METAL CEILING @ BEAM - DEDUCT ALTERNATE  
1 1/2" = 1'-0" A2.1



CONSTRUCTION DETAIL NOTES

REFER TO STRUCTURAL DRAWINGS FOR PIER AND FOUNDATION  
INFORMATION

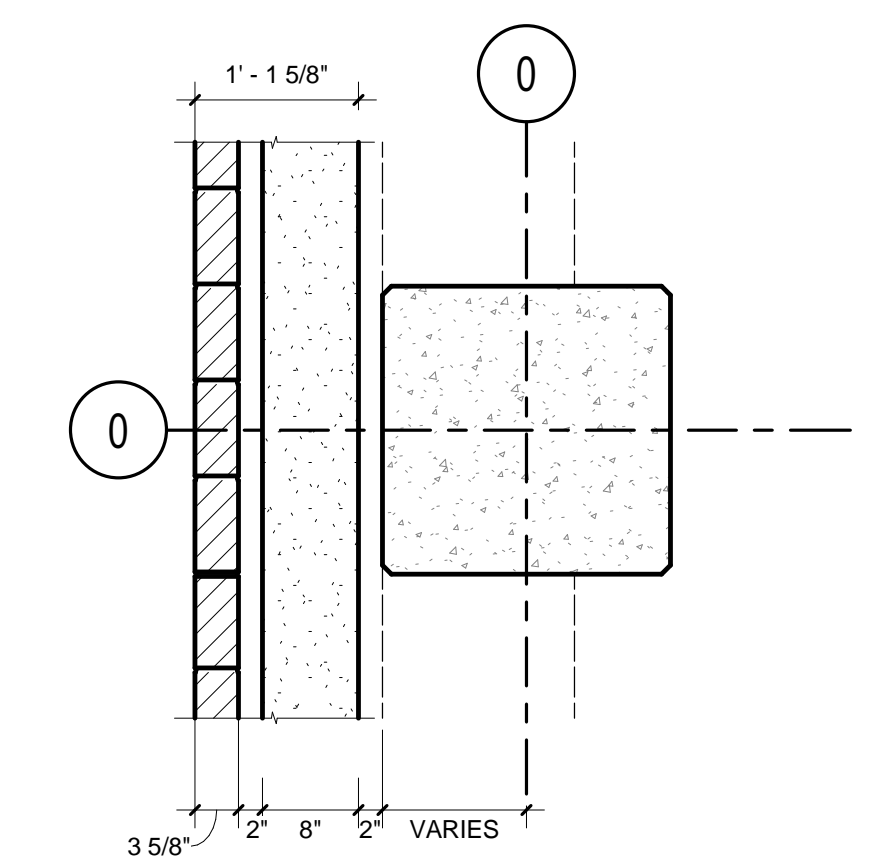
REFER TO STRUCTURAL DRAWINGS FOR COLUMN GRID  
DIMENSIONS

REFER TO STRUCTURAL DETAILS FOR ALL CONNECTIONS AND  
DETAILS OF PRECAST BACK TO CAST-IN-PLACE SLAB, BEAM AND  
COLUMNS

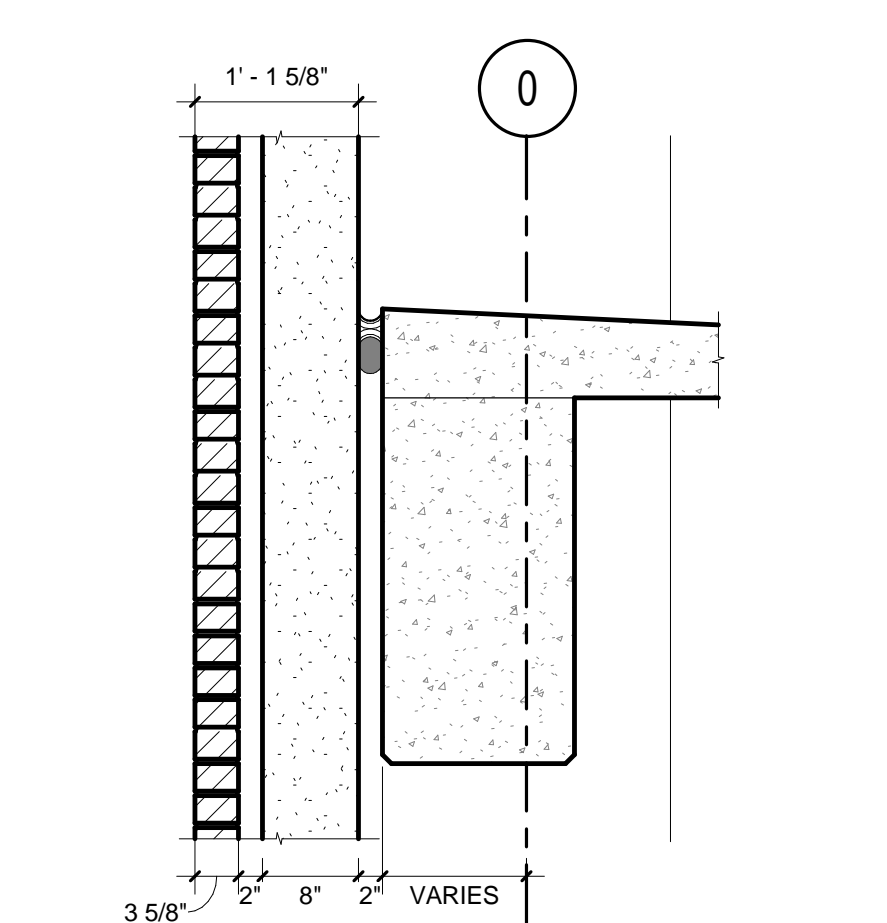
REFER TO ARCHITECTURAL ELEVATIONS AND SECTIONS FOR  
LOCATIONS OF MASONRY OPENINGS WITHIN CONTEXT OF  
ELEVATION

REFER TO STRUCTURAL DETAILS FOR FACE BRICK CONNECTIONS  
AND MASONRY TIES AND ALL SHELF ANGLES TIED BACK TO  
PRECAST

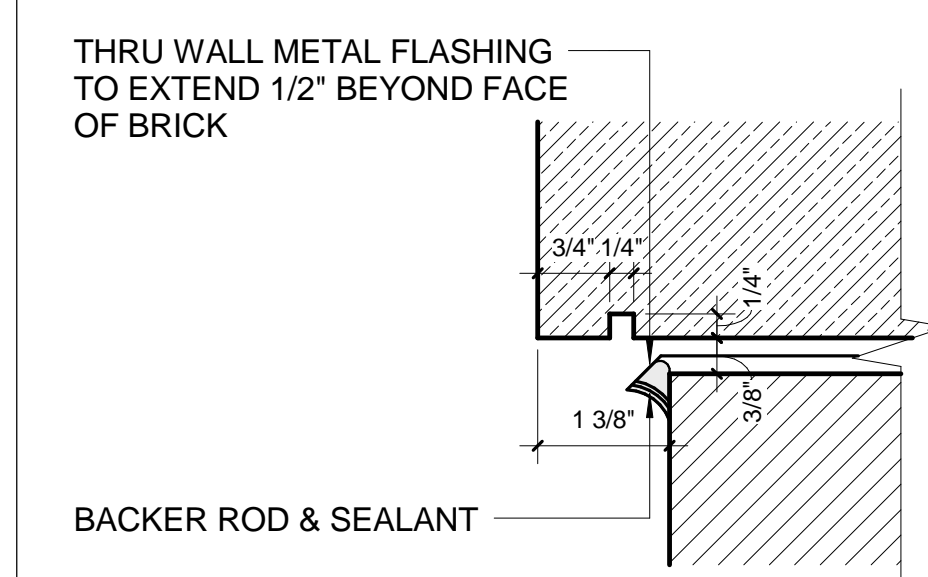
REFER TO STRUCTURAL DRAWINGS AND SPECIFICATIONS  
CONTINUOUS BACKROD AND SEALANT BETWEEN CAST-IN-PLACE  
STRUCTURE AND PRECAST BACK-UP



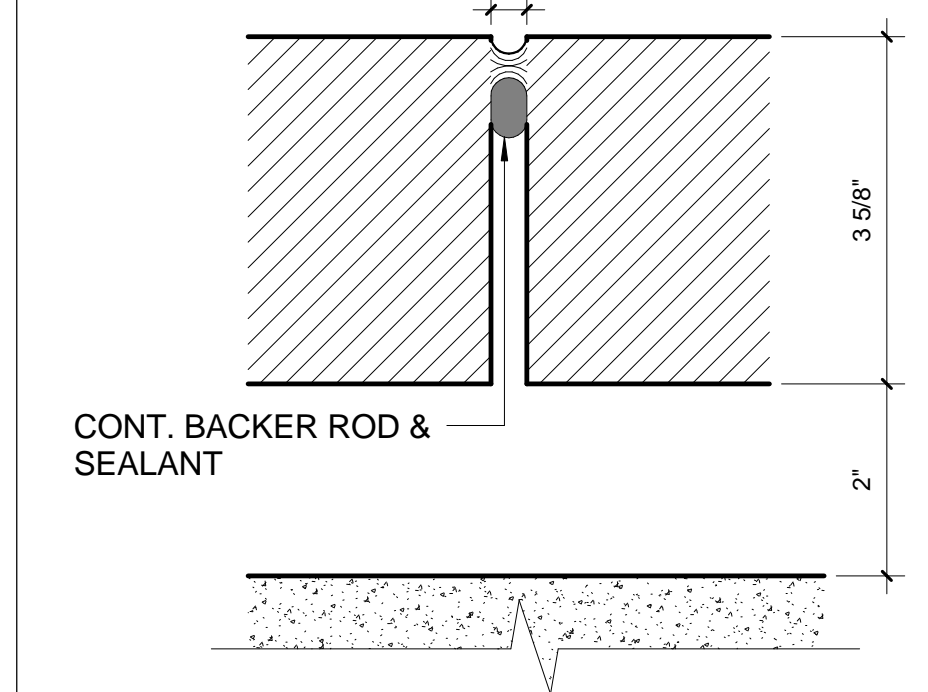
TYPICAL CAST-IN-PLACE TO  
PRECAST/FACE BRICK PLAN



TYPICAL CAST-IN-PLACE TO  
PRECAST/FACE BRICK SECTION



TYPICAL CAST STONE DRIP EDGE



TYPICAL VERTICAL BRICK  
EXPANSION JOINT

Revisions:	Date
FINAL CONSTRUCTION DOCUMENTS	06/10/11
100% REVIEW SUBMISSION (NOT FOR CONSTRUCTION)	04/11/11
75% REVIEW SUBMISSION (NOT FOR CONSTRUCTION)	02/03/11
75% REVIEW SUBMISSION (NOT FOR CONSTRUCTION) - COST ESTIMATE	01/19/11
35% REVIEW SUBMISSION (NOT FOR CONSTRUCTION)	11/22/10

CONSULTANTS/ENGINEERS:	
KJWW ENGINEERING CONSULTANTS Mechanical/Electrical/Plumbing Engineer	TERRACON Geotechnical Engineer
623 26TH AVENUE ROCK ISLAND, ILLINOIS 61201 309.788.0673 Telephone 309.786.5967 Fax	2640 12TH STREET SW CEDAR RAPIDS, IOWA 52404 319.366.8321 Telephone 319.366.0032 Fax

GRAEF Civil Engineer/Landscape Architect	WALKER PARKING CONSULTANTS Structural Engineer
332 SOUTH MICHIGAN, SUITE 1400 CHICAGO, ILLINOIS 60604-4507 312.582.2020 Telephone 312.939.7014 Fax	505 DAVIS ROAD ELGIN, ILLINOIS 60123 847.697.2640 Telephone 847.697.7439 Fax

FAITHFUL+GOULD Cost Management	223 SOUTH RIVERSIDE PLAZA, SUITE 2240 CHICAGO, ILLINOIS 60606 312.612.6319 Telephone 312.655.9037 Fax
-----------------------------------	--

ARCHITECT: <b>Loebl Schlossman &amp; Hackl</b> Architecture • Planning • Interiors
233 North Michigan Avenue Suite 3000 Chicago, Illinois 60601 312.565.1800 Telephone 312.565.5912 Facsimile www.lshdesign.com

Drawing Title <b>EXISTING PLANTER WALL, METAL CEILING &amp; MISC DETAILS</b>
Approved: Project Director <b>Iowa City VA Healthcare System Department of Veterans Affairs Medical Center</b>

Project Title <b>400 CAR PARKING GARAGE</b>
Location <b>IOWA CITY, IA</b>
Date <b>06/10/2011</b>
Checked <b>PS/JP</b>
Drawn <b>DM</b>

Project Number <b>636-402</b>
Building Number <b>43</b>
Drawing Number <b>A17</b>
Dwg 50 of 152

Office of Construction and Facilities Management
Department of Veterans Affairs