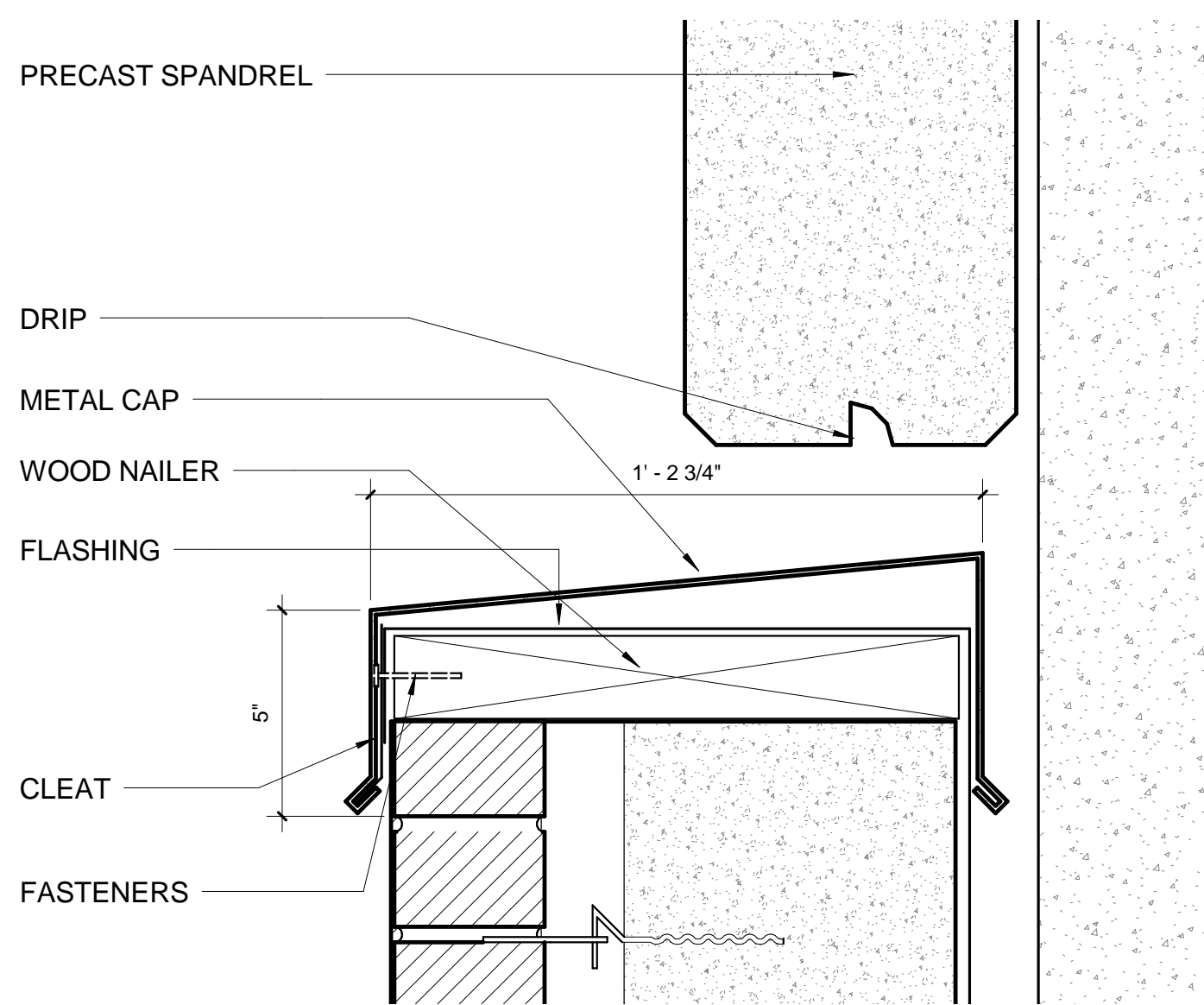
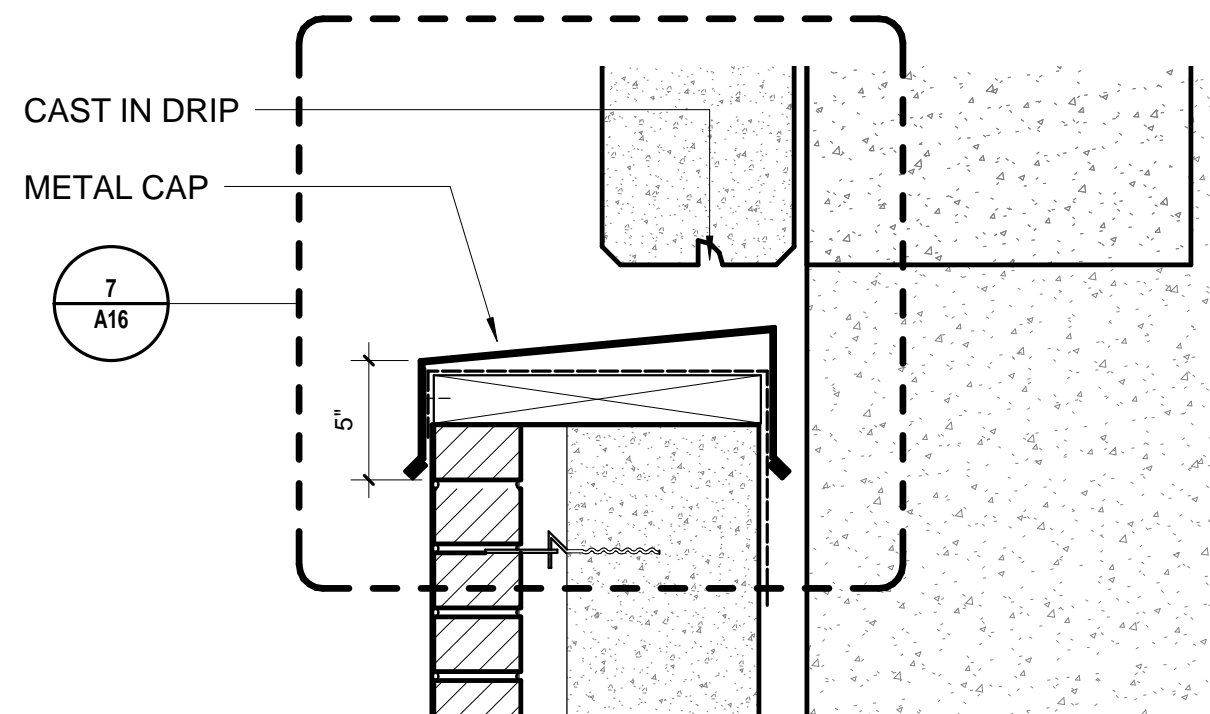


one eighth inch = one foot
one quarter inch = one foot
three eighths inch = one foot
one half inch = one foot
three quarters inch = one foot
one inch = one foot
one and one half inches = one foot
two inches = one foot
three inches = one foot

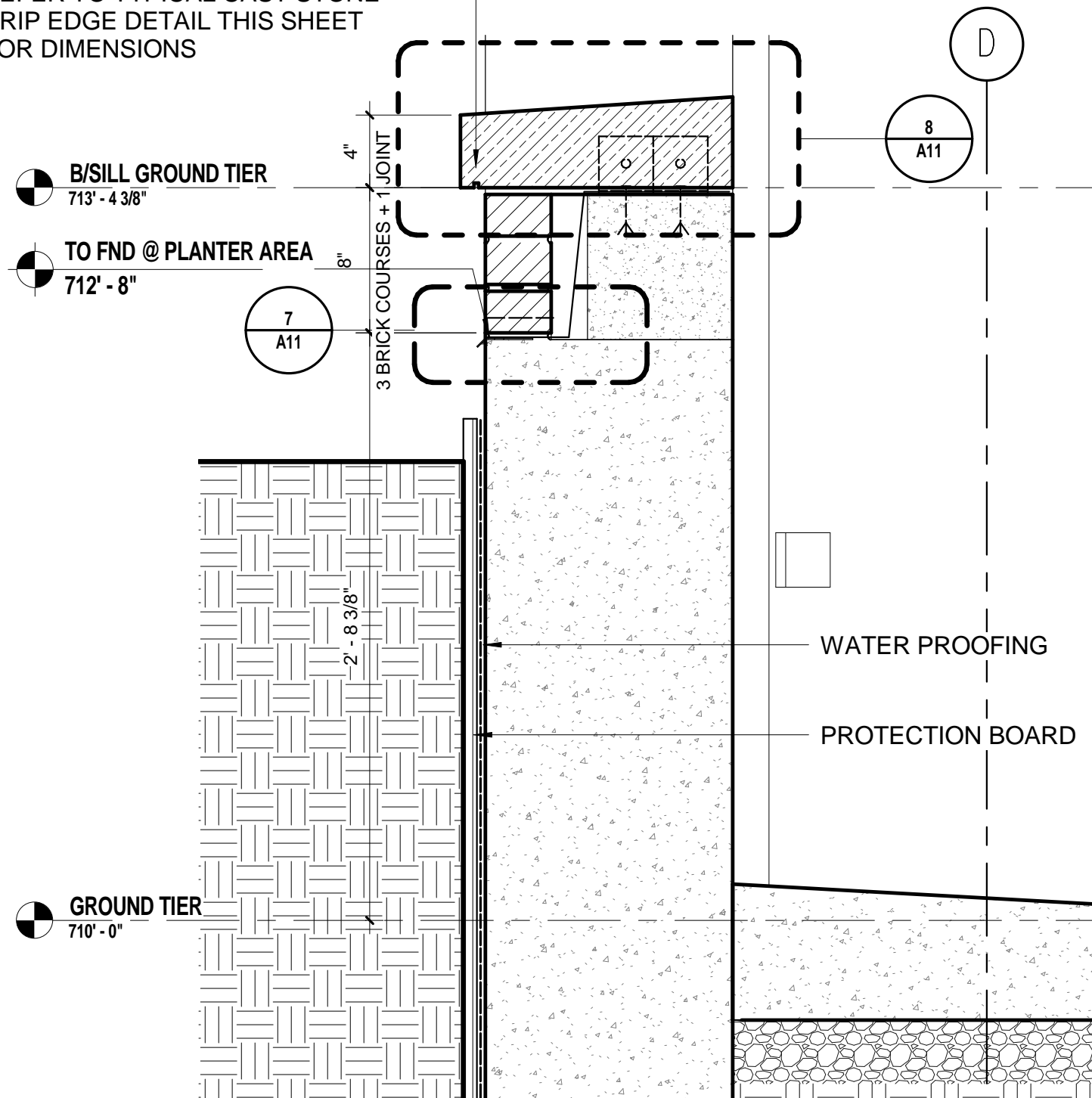


7 DETAIL @ CAP OVER PRECAST
3" = 1'-0" A16

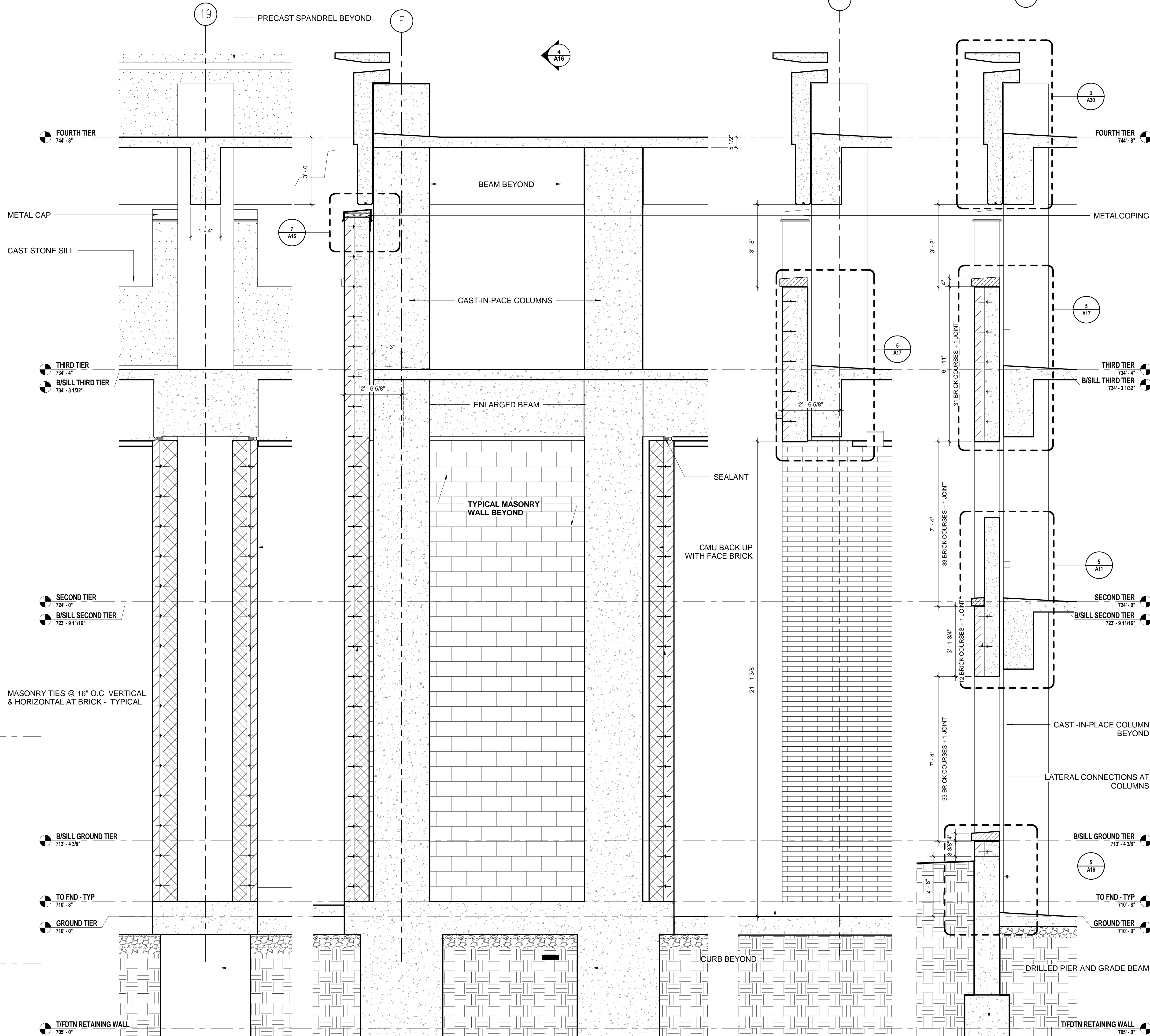


6 SECTION DETAIL @ CAP OVER PRECAST
1 1/2" = 1'-0"

REFER TO TYPICAL CAST STONE
DRIP EDGE DETAIL THIS SHEET
FOR DIMENSIONS



5 SECTION DETAIL @ PLANTED AREA EAST WALL
1 1/2" = 1'-0" A16



4 WALL SECTION@COLUMN COVER
1/2" = 1'-0" A16

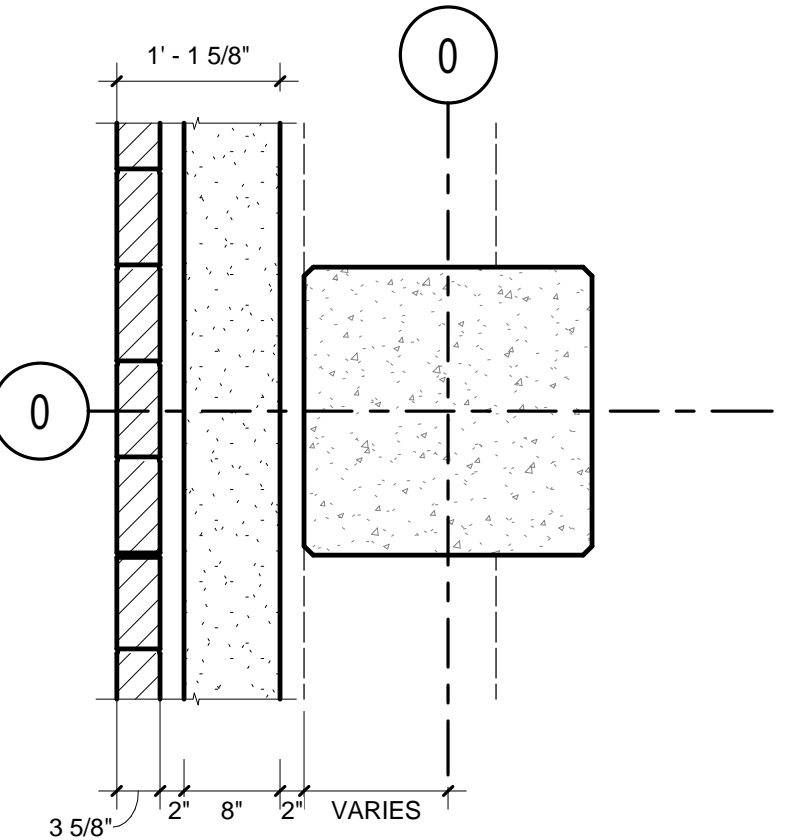
3 WALL SECTION@COLUMN COVER2
1/2" = 1'-0" A2

2 WALL SECTION@EAST ENTRANCE4
1/2" = 1'-0" A1

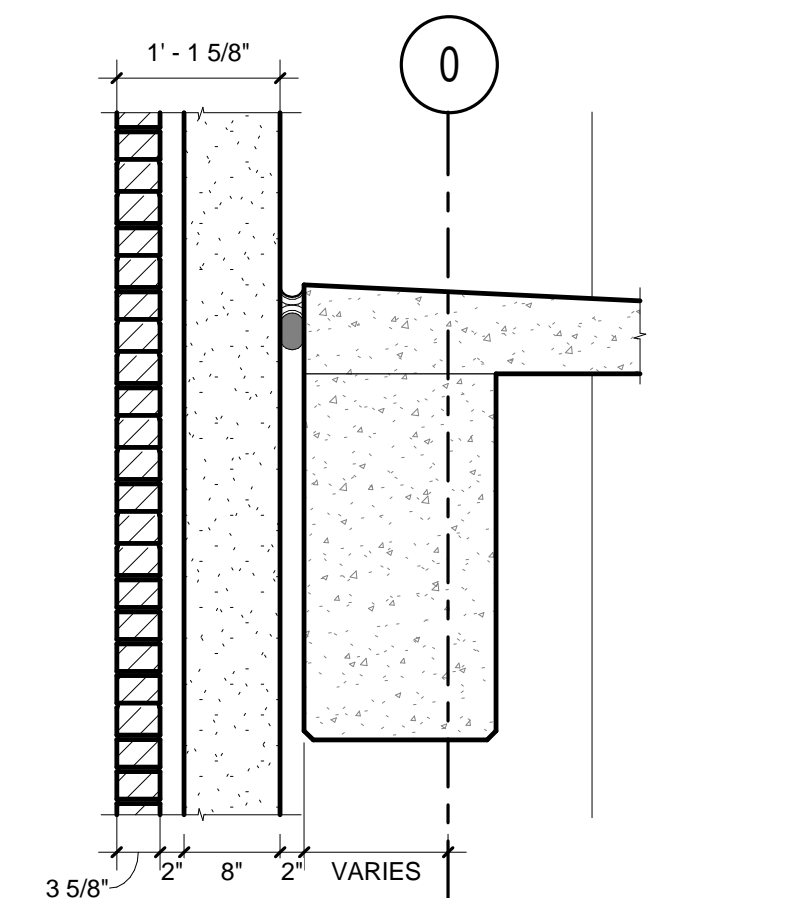
1 WALL SECTION@EAST
1/2" = 1'-0" A1

CONSTRUCTION DETAIL NOTES

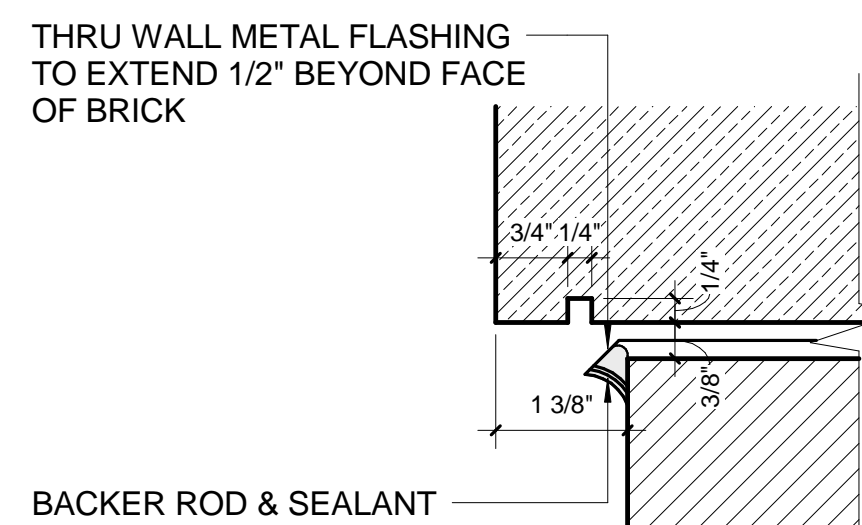
- REFER TO STRUCTURAL DRAWINGS FOR PIER AND FOUNDATION INFORMATION
- REFER TO STRUCTURAL DRAWINGS FOR COLUMN GRID DIMENSIONS
- REFER TO STRUCTURAL DETAILS FOR ALL CONNECTIONS AND DETAILS OF PRECAST BACK TO CAST-IN-PLACE SLAB, BEAM AND COLUMNS
- REFER TO ARCHITECTURAL ELEVATIONS AND SECTIONS FOR LOCATIONS OF MASONRY OPENINGS WITHIN CONTEXT OF ELEVATION
- REFER TO STRUCTURAL DETAILS FOR FACE BRICK CONNECTIONS AND MASONRY TIES AND ALL SHELF ANGLES TIED BACK TO PRECAST
- REFER TO STRUCTURAL DRAWINGS AND SPECIFICATIONS CONTINUOUS BACKROD AND SEALANT BETWEEN CAST-IN-PLACE STRUCTURE AND PRECAST BACK-UP



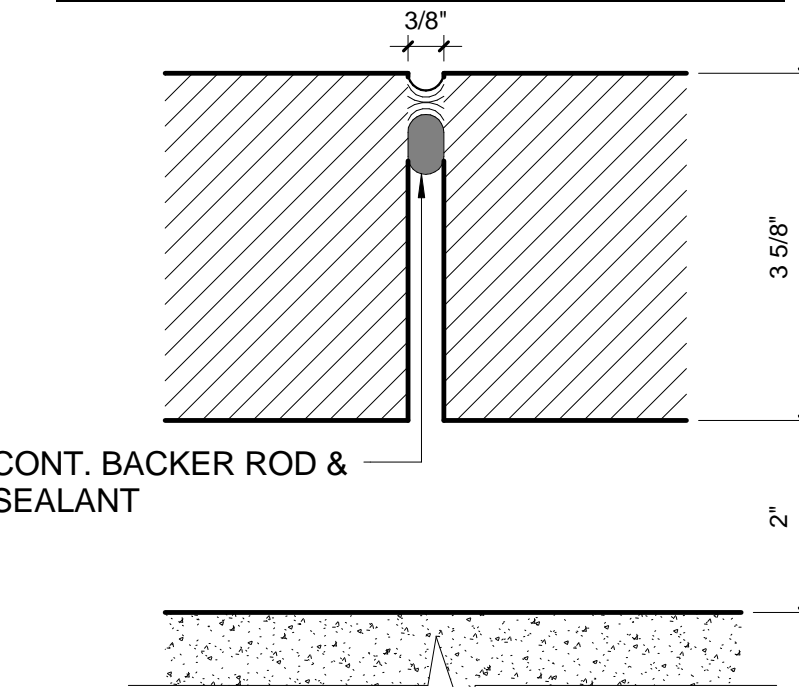
TYPICAL CAST-IN-PLACE TO
PRECAST/FACE BRICK PLAN



TYPICAL CAST-IN-PLACE TO
PRECAST/FACE BRICK SECTION



TYPICAL CAST STONE DRIP EDGE



TYPICAL VERTICAL BRICK
EXPANSION JOINT

CONSULTANTS/ENGINEERS:

KJWW ENGINEERING CONSULTANTS
Mechanical/Electrical/Plumbing Engineer
623 26TH AVENUE
ROCK ISLAND, ILLINOIS 61201
309.788.0673 Telephone
309.786.5967 Fax

TERRACON
Geotechnical Engineer
2640 12TH STREET SW
CEDAR RAPIDS, IOWA 52404
319.366.8321 Telephone
319.366.0032 Fax

GRAEF
Civil Engineer/Landscape Architect
332 SOUTH MICHIGAN, SUITE 1400
CHICAGO, ILLINOIS 60604-4507
312.582.2020 Telephone
312.939.7014 Fax

WALKER PARKING CONSULTANTS
Structural Engineer
505 DAVIS ROAD
ELGIN, ILLINOIS 60123
847.697.2640 Telephone
847.697.7439 Fax

FAITHFUL+GOULD
Cost Management
222 SOUTH RIVERSIDE PLAZA, SUITE 2240
CHICAGO, ILLINOIS 60606
312.612.6319 Telephone
312.655.9037 Fax

ARCHITECT:

Loebl Schlossman & Hackl
Architecture • Planning • Interiors

Copyright © 2011 Loebl Schlossman & Hackl Inc.

233 North Michigan Avenue
Suite 3000
Chicago, Illinois 60601

312.565.1800 Telephone
312.565.3912 Facsimile
www.lshdesign.com

Drawing Title

WALL SECTIONS & DETAILS - EAST ENTRANCE

Approved: Project Director

Iowa City VA Healthcare System
Department of Veterans Affairs Medical Center

Project Title

400 CAR PARKING GARAGE

Location

IOWA CITY, IA

Date

06/10/2011

Checked

PS/JP

Drawn

DM

Project Number

636-402

Building Number

43

Drawing Number

A16

Dwg 49 of 152

Office of
Construction
and Facilities
Management

Department of
Veterans Affairs