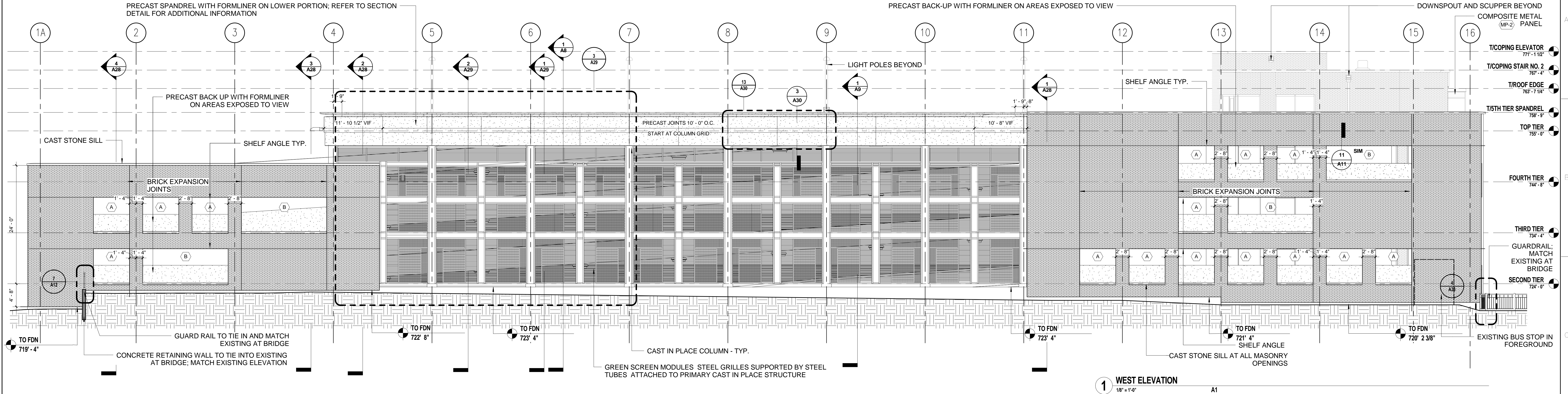


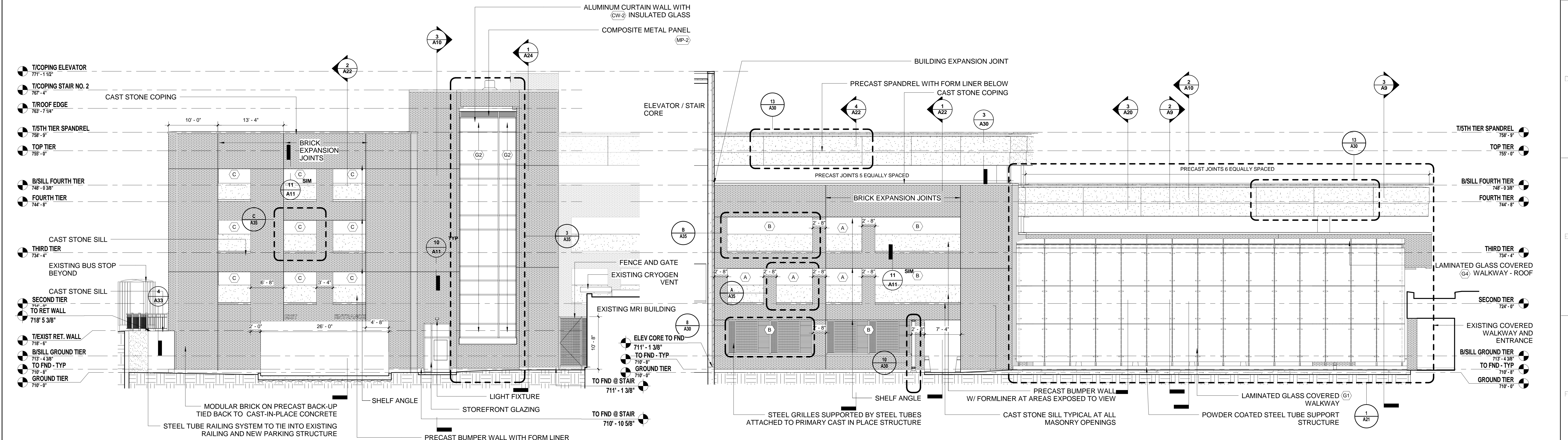
ELEVATION NOTES

FOR MASONRY OPENING REFER TO SHEET A35
ALL EXTERIOR EXPOSED CAST IN PLACE CONCRETE WILL BE STAINED (P-1)
ALL BRICK IS MODULAR BRICK ON PRECAST BACK-UP TIED BACK TO CAST-IN-PLACE CONCRETE UNLESS OTHERWISE NOTED



1 WEST ELEVATION

A1



2 SOUTH ELEVATION

A1

3 SOUTH ELEVATION - GLASS WALKWAY

A1

FINAL CONSTRUCTION DOCUMENTS	06/10/11
100% REVIEW SUBMISSION (NOT FOR CONSTRUCTION)	04/11/11
75% REVIEW SUBMISSION (NOT FOR CONSTRUCTION)	02/03/11
75% REVIEW SUBMISSION (NOT FOR CONSTRUCTION) - COST ESTIMATE	01/19/11
35% REVIEW SUBMISSION (NOT FOR CONSTRUCTION)	11/22/10
Revisions:	Date

CONSULTANTS/ENGINEERS:

KJWW ENGINEERING CONSULTANTS
Mechanical/Electrical/Plumbing Engineer
632 26TH AVENUE
ROCK ISLAND, ILLINOIS 61201
309.788.0673 Telephone
309.786.5967 Fax

TERRACON
Geotechnical Engineer
2640 12TH STREET SW
CEDAR RAPIDS, IOWA 52404
319.366.8321 Telephone
319.366.0032 Fax

GRAEF
Civil Engineer/Landscape Architect
332 SOUTH MICHIGAN, SUITE 1400
CHICAGO, ILLINOIS 60604-4507
312.582.2020 Telephone
312.939.7014 Fax

WALKER PARKING CONSULTANTS
Structural Engineer
505 DAVIS ROAD
ELGIN, ILLINOIS 60123
847.697.2640 Telephone
847.697.7439 Fax

FAITHFUL+GOULD
Cost Management
222 SOUTH RIVERSIDE PLAZA, SUITE 2240
CHICAGO, ILLINOIS 60606
312.612.6319 Telephone
312.655.9037 Fax

ARCHITECT:

Loebl Schlossman & Hackl
Architecture • Planning • Interiors

233 North Michigan Avenue
Suite 3000
Chicago, Illinois 60601

312.565.1800 Telephone
312.565.5912 Facsimile
www.lshdesign.com

Drawing Title

EXTERIOR ELEVATIONS

Approved: Project Director

Iowa City VA Healthcare System
Department of Veterans Affairs Medical Center

Project Title

400 CAR PARKING GARAGE

Location

IOWA CITY, IA

Date
06/10/2011

Checked
PS/JP

Drawn
DM

Project Number

636-402

Building Number

43

Drawing Number

A7
Dwg 40 of 152

Office of
Construction
and Facilities
Management

Department of
Veterans Affairs