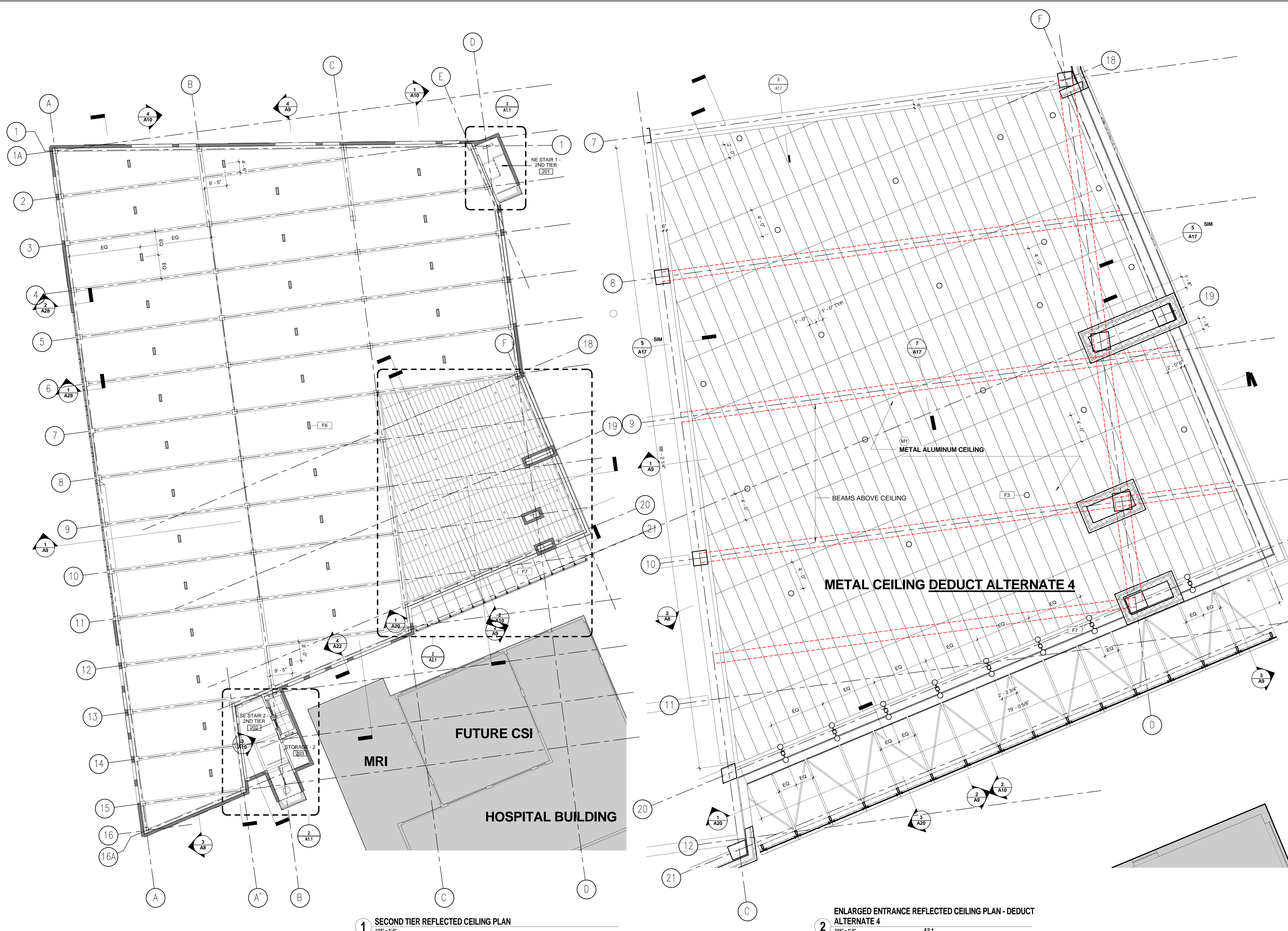


three inches = one foot  
one inch = one foot  
one and one half inches = one foot  
three quarters inch = one foot  
three eighths inch = one foot  
one eighth inch = one foot  
one quarter inch = one foot  
one eighth inch = one foot



**CONSTRUCTION PLAN SYMBOLS**

	NEW DOOR AND FRAME
	EXISTING DOOR TO REMAIN
	NEW WALL SEE PARTITION TYPE TAGS AND DETAILS
	EXISTING WALL
	1 HOUR RATED PARTITION
	2 HOUR RATED PARTITION
	PARTITION TYPE TAG
	DOOR TAG
	NEW COLUMN GRID LINE
	EXISTING COLUMN GRID LINE
	ELEVATION MARKER
	EXIT SIGN
	NO WORK IN EXISTING AREA

REFER TO ELECTRICAL DRAWINGS FOR  
ADDITIONAL FIXTURE TYPE INFORMATION

**RCP KEYNOTES**

1. ALL LIGHTING FIXTURES TO BE CENTERED IN  
STRUCTURAL GRID IN BOTH DIRECTIONS UNLESS OTHERWISE  
NOTED

**KEY PLAN**

		<b>CONSULTANTS/ENGINEERS:</b>				<b>ARCHITECT:</b>		<b>Drawing Title</b>		<b>Project Title</b>		<b>Project Number</b>		Office of Construction and Facilities Management							
		<b>KJWW ENGINEERING CONSULTANTS</b> Mechanical/Electrical/Plumbing Engineer		<b>TERRACON</b> Geotechnical Engineer		<b>GRAEF</b> Civil Engineer/Landscape Architect		<b>WALKER PARKING CONSULTANTS</b> Structural Engineer		<b>FAITHFUL+GOULD</b> Cost Management		<b>2ND TIER RCP</b>				<b>400 CAR PARKING GARAGE</b>		<b>636-402</b>			
		623 26TH AVENUE ROCK ISLAND, ILLINOIS 61201 309.788.0673 Telephone 309.786.5967 Fax		2640 12TH STREET SW CEDAR RAPIDS, IOWA 52404 319.366.8321 Telephone 319.366.0032 Fax		332 SOUTH MICHIGAN, SUITE 1400 CHICAGO, ILLINOIS 60604-4367 847.697.2640 Telephone 312.939.7014 Fax		505 DAVIS ROAD ELGIN, ILLINOIS 60123 847.697.2640 Telephone 847.697.7439 Fax		222 SOUTH RIVERSIDE PLAZA, SUITE 2240 CHICAGO, ILLINOIS 60606 312.582.2020 Telephone 312.655.9037 Fax		233 North Michigan Avenue Suite 3000 Chicago, Illinois 60601				Building Number <b>43</b>					
FINAL CONSTRUCTION DOCUMENTS		06/10/11								312.565.1800 Telephone 312.565.5912 Facsimile www.lshdesign.com		Approved: Project Director		Location <b>IOWA CITY, IA</b>		Drawing Number <b>A2.1</b>		Department of Veterans Affairs			
100% REVIEW SUBMISSION (NOT FOR CONSTRUCTION)		04/11/11										Iowa City VA Healthcare System Department of Veterans Affairs Medical Center		Date <b>06/10/2011</b>		Checked <b>PS/JP</b>				Drawn <b>DM</b>	
75% REVIEW SUBMISSION (NOT FOR CONSTRUCTION)		02/03/11														Dwg. 32 of 152					
75% REVIEW SUBMISSION (NOT FOR CONSTRUCTION) - COST ESTIMATE		01/19/11																			
35% REVIEW SUBMISSION (NOT FOR CONSTRUCTION)		11/22/10																			
Revisions:		Date																			