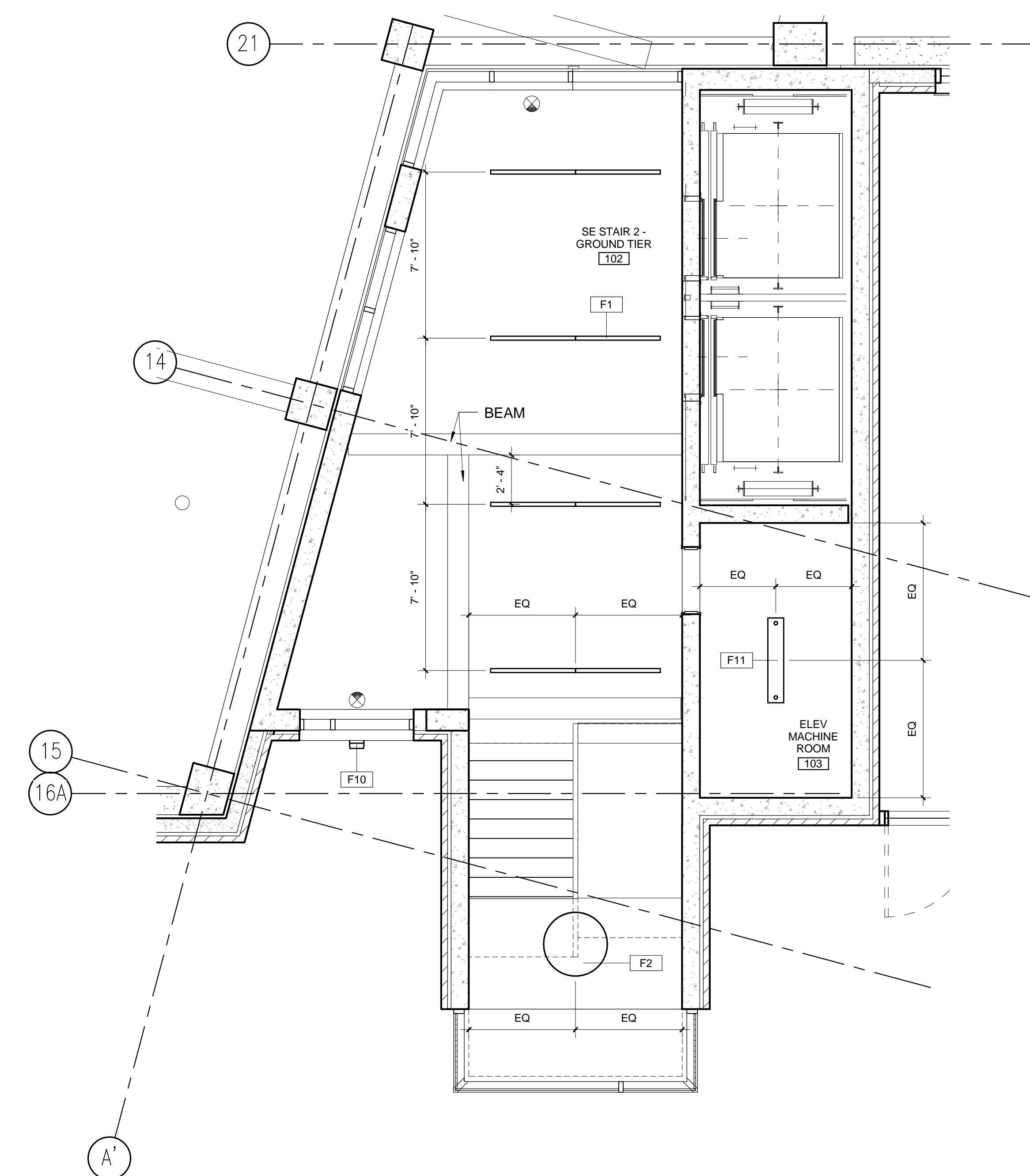
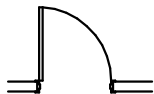
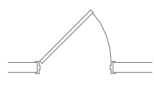



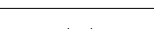
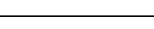
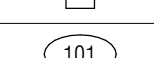


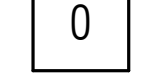
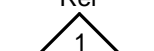




**3** ENLARGED NE STAIR 1 TYPICAL REFLECTED CEILING PLAN  
1/4" = 1'-0" A1.1



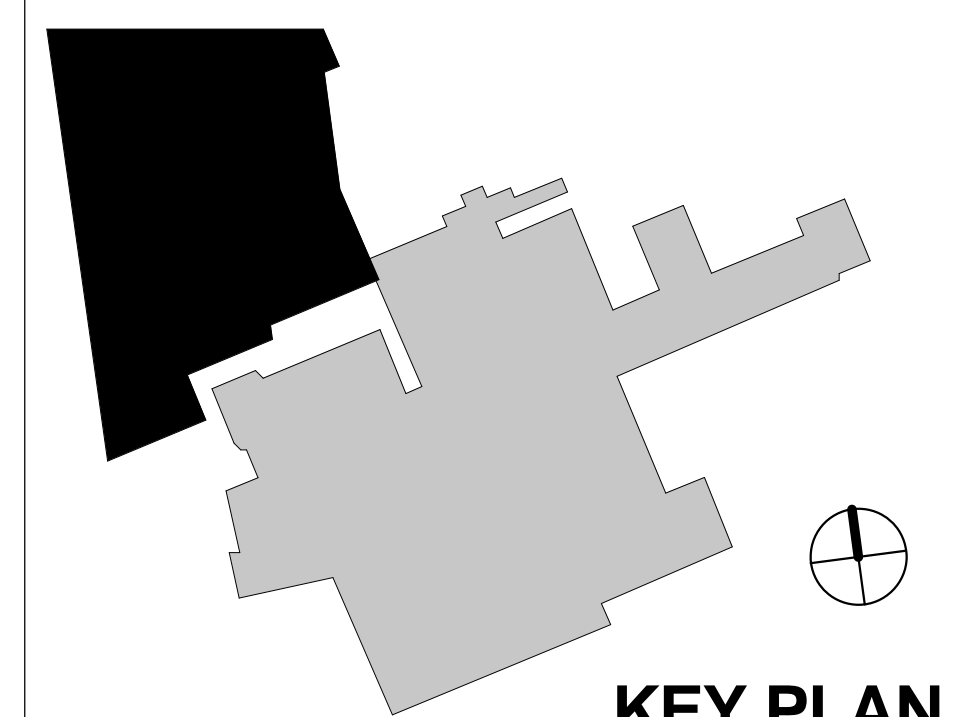
**2 ENLARGED SE STAIR 2 RCP GR - 4TH TIER**  
1/4" = 1'-0" A1.1

CONSTRUCTION PLAN SYMBOLS	
	NEW DOOR AND FRAME
	EXISTING DOOR TO REMAIN
	NEW WALL SEE PARTITION TYPE TAGS AND DETAILS
	EXISTING WALL
	1 HOUR RATED PARTITION
	2 HOUR RATED PARTITION
	PARTITION TYPE TAG
	DOOR TAG
	NEW COLUMN GRID LINE
	EXISTING COLUMN GRID LINE
	ELEVATION MARKER
	EXIT SIGN
NO WORK IN EXISTING AREA	

REFER TO ELECTRICAL DRAWINGS FOR  
ADDITIONAL FIXTURE TYPE INFORMATION

## RCP KEYNOTES

1. ALL LIGHTING FIXTURES TO BE CENTERED IN STRUCTURAL GRID IN BOTH DIRECTIONS UNLESS OTHERWISE NOTED



## KEY PLAN

			CONSULTANTS/ENGINEERS:						ARCHITECT:						Drawing Title		Project Title		Project Number		Office of Construction and Facilities Management					
			KJWW ENGINEERING CONSULTANTS Mechanical/Electrical/Plumbing Engineer		TERRACON Geotechnical Engineer		GRAEF Civil Engineer/Landscape Architect		WALKER PARKING CONSULTANTS Structural Engineer		FAITHFUL + GOULD Cost Management		233 North Michigan Avenue Suite 3000 Chicago, Illinois 60601		GROUND TIER REFLECTED CEILING PLAN		400 CAR PARKING GARAGE		636-402							
			623 26TH AVENUE ROCK ISLAND, ILLINOIS 61201 309.788.0673 Telephone 309.786.5967 Fax		2640 12TH STREET SW CEDAR RAPIDS, IOWA 52404 319.366.8321 Telephone 319.366.0032 Fax		332 SOUTH MICHIGAN, SUITE 1400 CHICAGO, ILLINOIS 60604-4367 312.582.2020 Telephone 312.939.7014 Fax		505 DAVIS ROAD ELGIN, ILLINOIS 60123 847.697.2640 Telephone 847.697.7439 Fax		222 SOUTH RIVERSIDE PLAZA, SUITE 2240 CHICAGO, ILLINOIS 60606 312.612.6319 Telephone 312.655.9037 Fax						Building Number 43									
FINAL CONSTRUCTION DOCUMENTS		06/10/11	100% REVIEW SUBMISSION (NOT FOR CONSTRUCTION)		04/11/11		75% REVIEW SUBMISSION (NOT FOR CONSTRUCTION)		02/03/11		75% REVIEW SUBMISSION (NOT FOR CONSTRUCTION) – COST ESTIMATE		01/19/11		35% REVIEW SUBMISSION (NOT FOR CONSTRUCTION)		11/22/10		Drawing Number A1.1 Dwg 30 of 152							
Revisions:			Date									312.565.1800 Telephone 312.565.5912 Facsimile www.lshdesign.com			Approved: Project Director		Location IOWA CITY, IA		Date 06/10/2011		Checked PS/JP		Drawn DM		Department of Veterans Affairs	
												Iowa City VA Healthcare System Department of Veterans Affairs Medical Center														