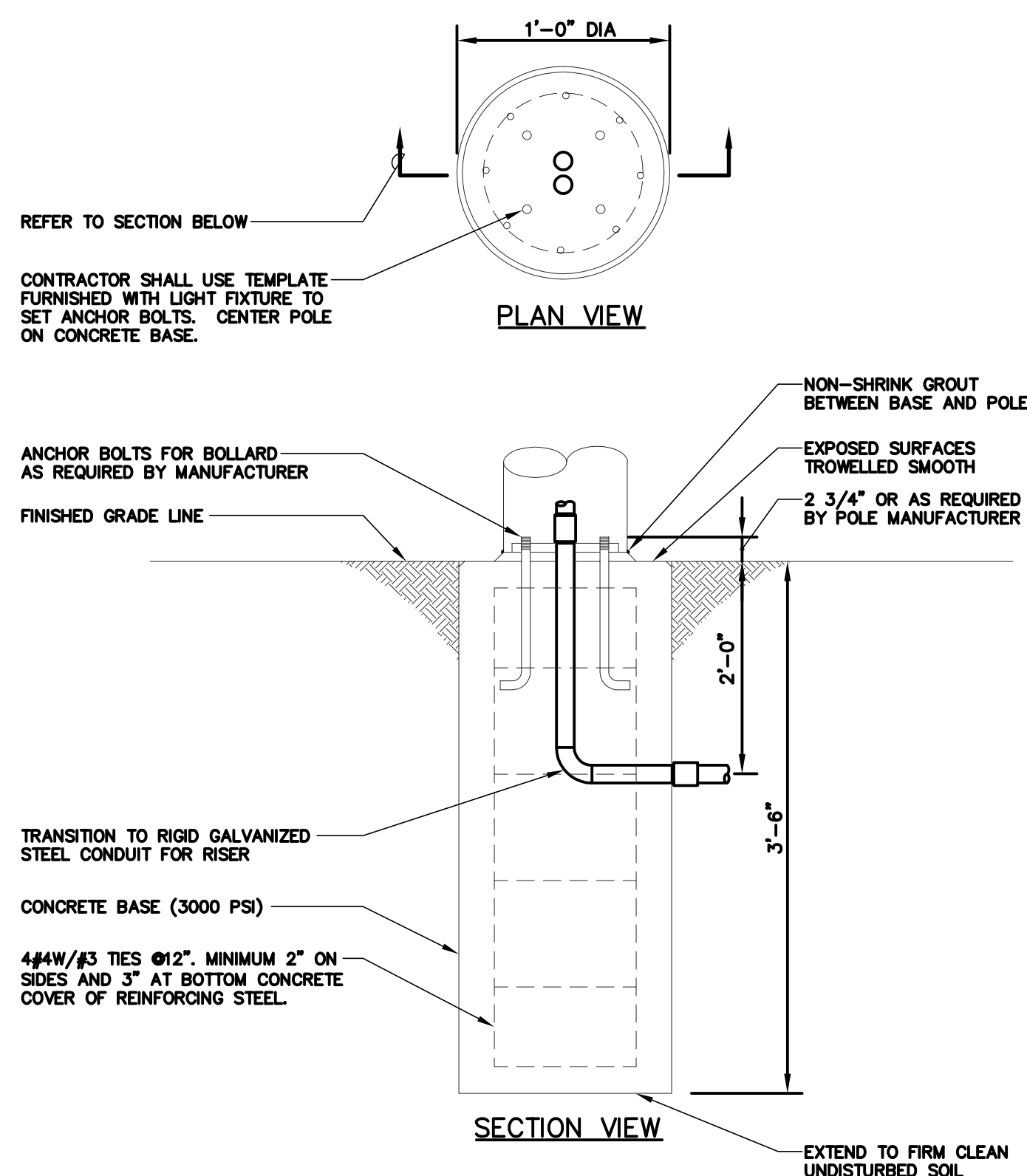
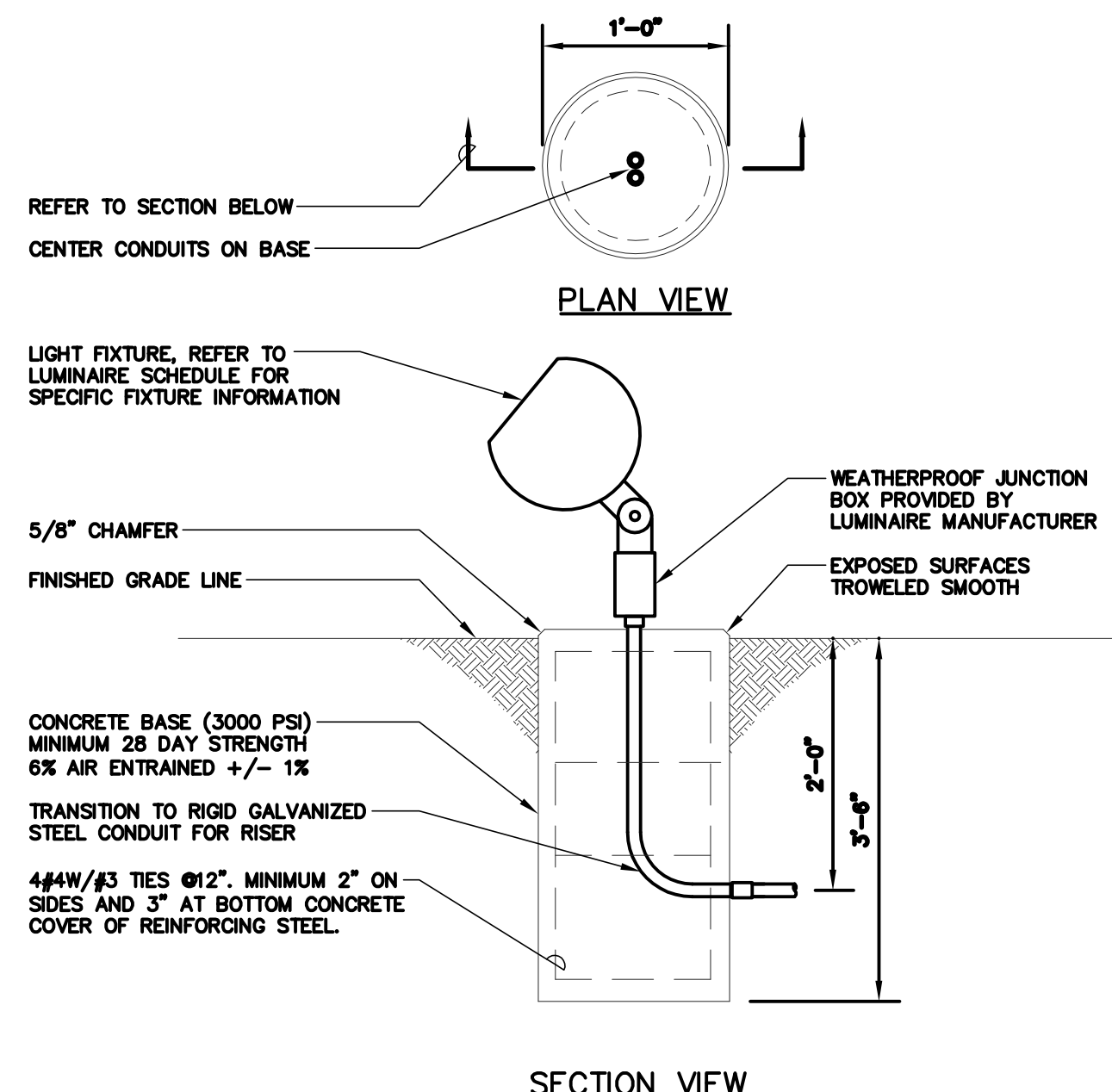


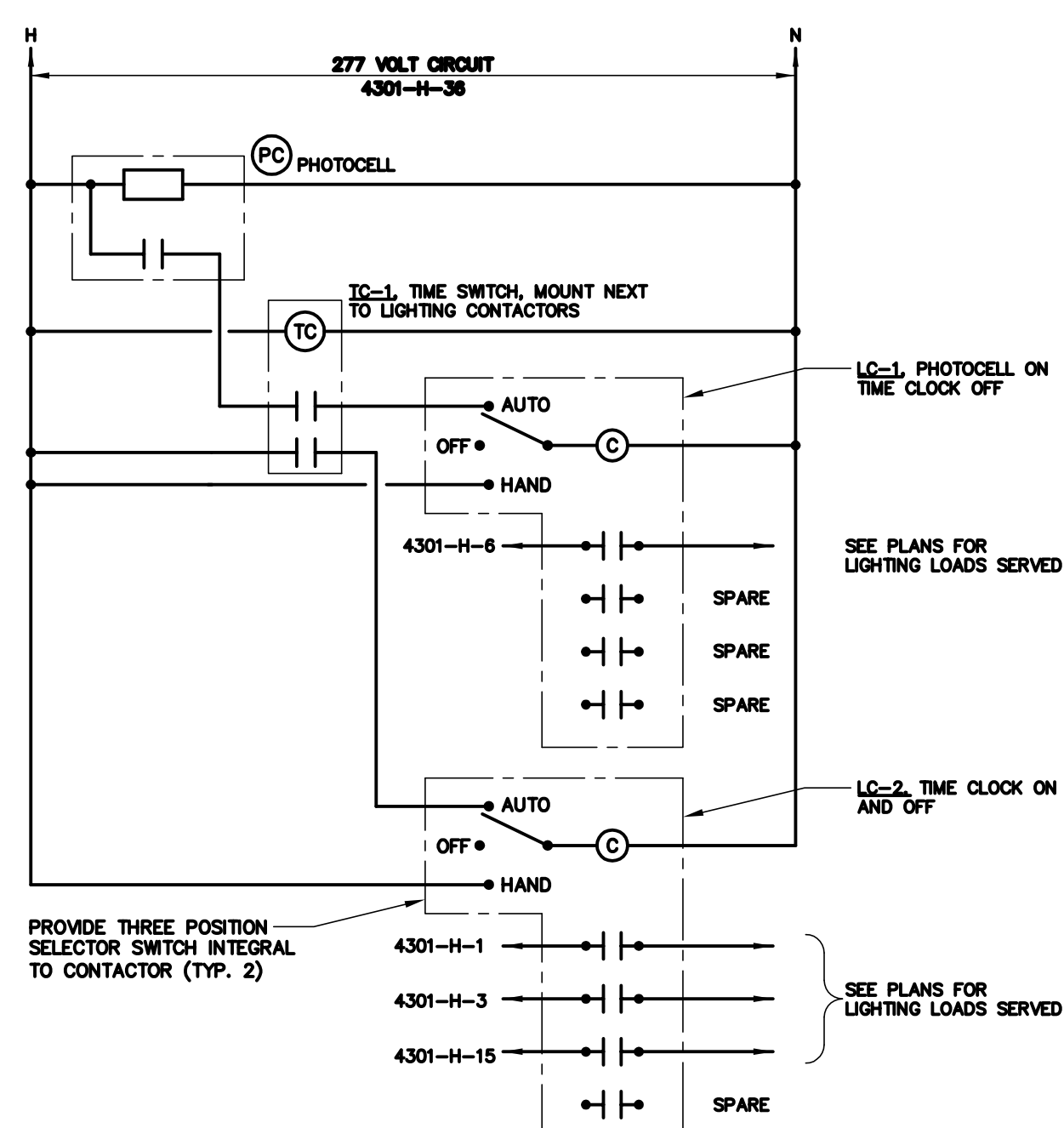
1 EXTENDED POLE BASE DETAIL
NO SCALE



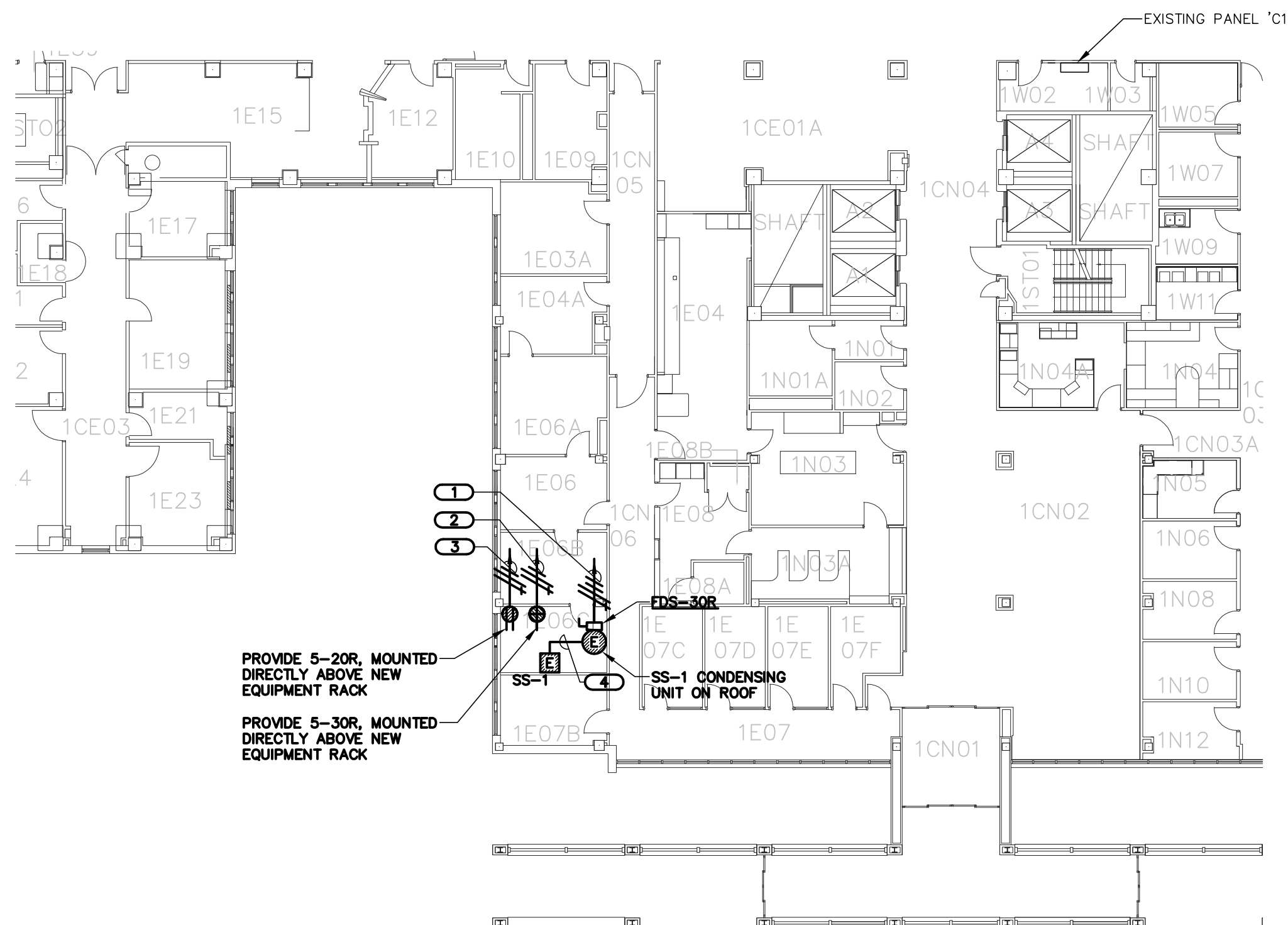
2 BOLLARD BASE DETAIL
NO SCALE



3 GROUND MOUNT BASE DETAIL
NO SCALE



4 EXTERIOR LIGHTING CONTROL DIAGRAM
NO SCALE



4 FIRST FLOOR PLAN - BUILDING 1
1/16" = 1'-0"

- KEYNOTES:**
- ROUTE 3#12 & 1#12 GND IN 3/4" C. TO NEW 20A/2P BREAKER IN EXISTING PANEL 'C1'. NEW BREAKER SHALL MATCH EXISTING PANEL RATINGS AND CONSTRUCTION. REMOVE EXISTING 20A SINGLE POLE SPARE BREAKERS TO ALLOW FOR THE INSTALLATION OF THE NEW BREAKER. RETURN THE SPARE BREAKERS TO THE VA.
 - ROUTE 2#10 & 1#12 GND IN 3/4" C. TO NEW 30A/1P BREAKER IN EXISTING PANEL 'C1'. NEW BREAKER SHALL MATCH EXISTING PANEL RATINGS AND CONSTRUCTION. REMOVE EXISTING 20A SINGLE POLE SPARE BREAKER TO ALLOW FOR THE INSTALLATION OF THE NEW BREAKER. RETURN THE SPARE BREAKERS TO THE VA.
 - ROUTE 2#12 & 1#12 GND IN 3/4" C. TO EXISTING SPARE 20A/1P BREAKER IN EXISTING PANEL 'C1'.
 - THE OUTDOOR UNIT PROVIDES POWER FOR THE INDOOR UNIT. E.G. TO PROVIDE WIRING BETWEEN INDOOR AND OUTDOOR UNIT PER MANUFACTURER'S REQUIREMENTS.

KEYPLAN

GENERAL ELECTRICAL NOTES:

- "1/43-E1" INDICATES DETAIL NUMBER/SHEET NUMBER.
- ##-##** INDICATES ELECTRICAL EQUIPMENT DEFINED IN ELECTRICAL SCHEDULES. REFER TO DRAWINGS CONTAINING ELECTRICAL SCHEDULES. PERMANENT NAMEPLATE SHALL MATCH FINAL EQUIPMENT NOMENCLATURE, NOT ELECTRICAL EQUIPMENT TAG NAME. REFER TO SPECIFICATIONS.
- INDICATES KEYED NOTE USED TO DESCRIBE ADDITIONAL INFORMATION OF WORK REQUIRED, SPECIFIC TO THE SHEET AND/OR DETAIL IT IS SHOWN WITH.
- "NL" INDICATES LUMINAIRE IS UNSWITCHED FOR NIGHT LIGHT.
- SHADED LUMINAIRE OR DEVICE INDICATES LUMINAIRE OR DEVICE IS CONNECTED TO AN EMERGENCY CIRCUIT.
- ALL ELECTRICAL CONDUCTORS SHALL BE COPPER.
- INDICATES NUMBER OF WIRES IN CONDUIT.
- GROUND WIRE
NEUTRAL WIRE
PHASE WIRE
- SHOWN BETWEEN LUMINAIRES DESIGNATES LUMINAIRE OR GROUP OF LUMINAIRES SWITCHED SEPARATELY, YET CONNECTED TO THE SAME BRANCH CIRCUIT. LUMINAIRES THAT DO NOT HAVE A REMOTE MEANS OF SWITCHING (I.E., EXIT SIGNS, EMERGENCY UNITS, NIGHT LIGHTS) SHALL BE CONNECTED TO AN UNSWITCHED LEG OF THE BRANCH CIRCUIT.
- ABBREVIATION KEY:
E.C. ELECTRICAL CONTRACTOR
T.C. TELECOMMUNICATIONS CONTRACTOR
M.C. MECHANICAL CONTRACTOR
G.C. GENERAL CONTRACTOR
A/F ABOVE FINISHED FLOOR
C CONDUIT
TYP TYPICAL
+F' MOUNTING HEIGHT FROM FINISHED FLOOR TO CENTERLINE
- MOUNTING SUBSCRIPT KEY:
RECEPTACLES AND TELECOMMUNICATIONS OUTLETS:
A MOUNT ABOVE COUNTER (+6" TO CENTERLINE ABOVE COUNTER OR BACKSPLASH)
REFER TO GENERAL ELECTRICAL EQUIPMENT SCHEDULE AND SPECIFICATIONS FOR FULL DESCRIPTIONS AND MANUFACTURERS OF ALL DEVICES.
- LINE TYPE KEY:
— NEW WORK BY THIS CONTRACTOR (DARK SOLID LINE)
- - - NEW WORK UNDERFLOOR OR UNDERGROUND BY THIS CONTRACTOR (DARK LONG DASHED LINE)
- - - NEW WORK BY OTHERS AND/OR EXISTING TO REMAIN (LIGHT SOLID LINE)
- - - EXISTING TO BE REMOVED BY THIS CONTRACTOR (DARK SHORT DASHED LINE)

ELECTRICAL INSTALLATION NOTES:

- THE COMPLETE INSTALLATION SHALL BE IN ACCORDANCE WITH THE ADAAG (AMERICANS WITH DISABILITIES ACT ACCESSIBILITY GUIDELINES).
- CIRCUIT NUMBERS ARE SHOWN FOR CIRCUIT IDENTIFICATION. CIRCUITING SHALL AGREE WITH NUMBERING ON THE PANEL PROVIDED. COMMON NEUTRALS MAY NOT BE USED FOR BRANCH CIRCUITS. BALANCE THE LOAD ON PANEL AS EVENLY AS POSSIBLE BETWEEN EACH PHASE.
- CIRCUITS SERVING EMERGENCY AND EXIT LUMINAIRES WILL BE RUN IN SEPARATE RACEWAY FROM ALL OTHER CIRCUITS.
- A #12 GREEN INSULATED GROUND CONDUCTOR SHALL BE INSTALLED WITH CIRCUIT CONDUCTORS TO ALL RECEPTACLES.
- MOUNT ALL TOGGLE AND OCCUPANCY SENSOR SWITCHES AT +42" FROM FLOOR (CENTERLINE DIMENSION), EXCEPT WHERE OTHERWISE NOTED.
- MOUNT ALL RECEPTACLES AND TELECOMMUNICATION OUTLETS AT +18" FROM FLOOR (CENTERLINE DIMENSION), EXCEPT WHERE OTHERWISE NOTED.
- CONTRACTOR SHALL VERIFY ALL EQUIPMENT LOCATIONS WITH ARCHITECTURAL PLANS, ELEVATIONS AND REVISION SHOP DRAWINGS. PRIOR TO MAKING THE ACTUAL ELECTRICAL INSTALLATION THIS CONTRACTOR SHALL ADJUST RECEPTACLES, OUTLETS OR CONNECTION LOCATIONS TO ACCOMMODATE EQUIPMENT.
- ELECTRICAL AND TELECOMMUNICATIONS EQUIPMENT SHALL BE MOUNTED TO AVOID IMPEDANCE OF OPERATION OF AND/OR ACCESS TO ELECTRICAL AND MECHANICAL EQUIPMENT. ALL MOUNTING OF ELECTRICAL AND TELECOMMUNICATIONS, ON EQUIPMENT SUPPLIED BY ANOTHER CONTRACTOR, SHALL BE APPROVED IN ADVANCE BY THE OTHER CONTRACTOR.
- ALL FINAL ELECTRICAL CONNECTIONS TO MOTORS SHALL BE MADE WITH FLEXIBLE METAL CONDUIT. USE LIQUIDTIGHT CONDUIT AND FITTINGS WHERE SUBJECT TO MOISTURE. ROUTE GROUND WIRE FROM CIRCUIT GROUND TO MOTOR GROUND THROUGH FLEXIBLE CONDUIT. FLEXIBLE CONDUIT SHALL NOT EXCEED 4' IN LENGTH.
- CONTRACTOR SHALL BE RESPONSIBLE FOR ALL OPENINGS REQUIRED IN WALLS. ALL OPENINGS SHALL BE REPAIRED TO MATCH EXISTING BY A QUALIFIED CONTRACTOR AT THE EXPENSE OF THIS CONTRACTOR. ALL CONDUITS THROUGH WALLS SHALL BE GROUTED OR SEALED INTO OPENINGS.
- CONTRACTOR SHALL REMOVE AND REINSTALL ALL CEILING TILES AS REQUIRED FOR THE EXECUTION OF ELECTRICAL WORK THAT IS OUTSIDE THE CONTRACT LIMITS OF CONSTRUCTION. CONTRACTOR SHALL REPLACE CEILING TILES WITH IDENTICAL MATERIAL WHERE DAMAGED BY THIS CONTRACTOR.
- ALL CONDUIT IN THE PARKING RAMP EXPOSED TO THE ELEMENTS SHALL BE RIGID STEEL (RGS) TYPE. THE USE OF EMT IS PROHIBITED.

Revisions:	Date
FINAL CONSTRUCTION DOCUMENTS	06/10/11
100% REVIEW SUBMISSION (NOT FOR CONSTRUCTION)	04/11/11
75% REVIEW SUBMISSION (NOT FOR CONSTRUCTION)	02/03/11
75% REVIEW SUBMISSION (NOT FOR CONSTRUCTION) - COST ESTIMATE	01/19/11
35% REVIEW SUBMISSION (NOT FOR CONSTRUCTION)	11/22/10

CONSULTANTS/ENGINEERS:

KJMW ENGINEERING CONSULTANTS
Mechanical/Electrical/Plumbing Engineer
623 26TH AVENUE
RICHMOND, ILLINOIS 61201
309.788.0673 Telephone
309.786-5967 Fax

TERRACON
Geotechnical Engineer
2640 12TH STREET SW
CEDAR RAPIDS, IOWA 52404
319.366.8321 Telephone
319.366.0032 Fax

GRAEF
Civil Engineer/Landscape Architect
332 SOUTH MICHIGAN, SUITE 1400
CHICAGO, ILLINOIS 60604-4367
312.582.2020 Telephone
312.939.7014 Fax

WALKER PARKING CONSULTANTS
Structural Engineer
305 DAVIS ROAD
ELGIN, ILLINOIS 60123
847.697.2640 Telephone
847.697.7439 Fax

FAITHFUL+GOULD
Cost Management
222 SOUTH RIVERSIDE PLAZA, SUITE 2240
CHICAGO, ILLINOIS 60606
312.612.6319 Telephone
312.655.9037 Fax

ARCHITECT:

Loebl Schlossman & Hackl
Architecture•Planning•Interiors

Copyright © 2010 Loebl Schlossman & Hackl Inc.

233 North Michigan Avenue
Suite 3000
Chicago, Illinois 60601

312.565.1800 Telephone
312.565.5912 Facsimile
www.lhsdesign.com

Drawing Title

DETAILS - ELECTRICAL

Approved: Project Director

Iowa City VA Healthcare System
Department of Veterans Affairs Medical Center

Project Title

400 CAR PARKING GARAGE

Location

IOWA CITY, IA

Date

06/10/2011

Checked

BRIWEG

Drawn

MATSNY

Project Number

636-402

Building Number

43

Drawing Number

43-E7

Dwg. 142 of 152

Office of
Construction
and Facilities
Management

Department of
Veterans Affairs