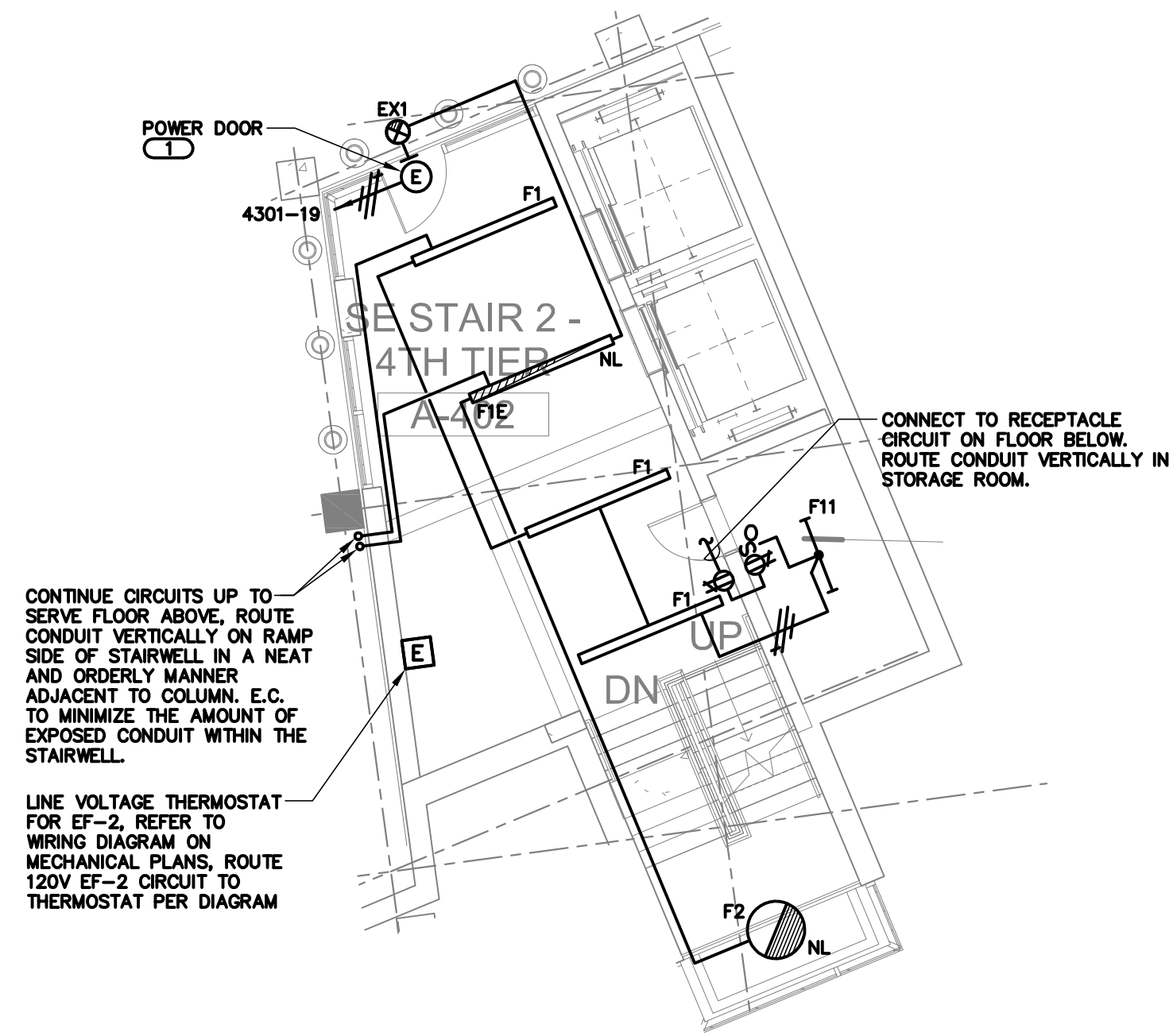


KEYNOTES

1. E.C. TO INSTALL AND WIRE ACTUATORS PROVIDED WITH DOOR HARDWARE. REFER TO ARCHITECTURAL PLANS FOR LOCATIONS.

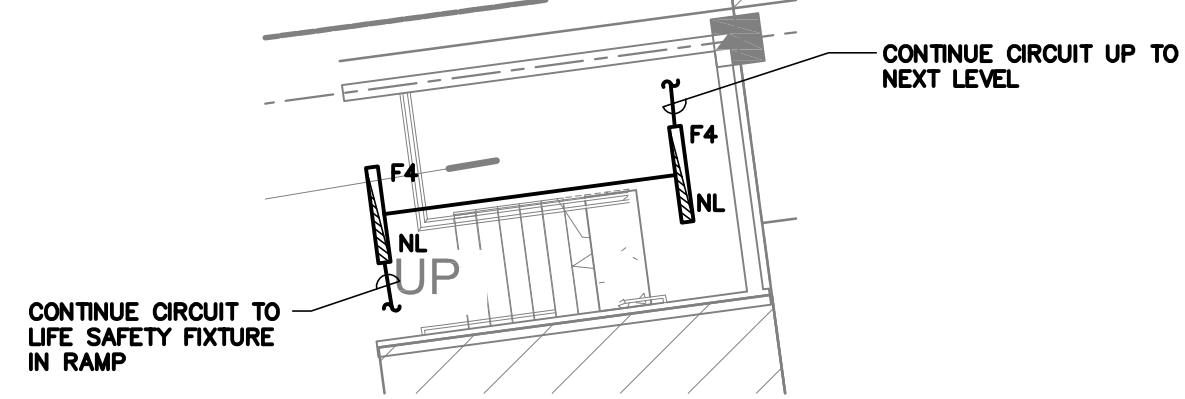
2 ENLARGED STAIRWELL A-401 PLAN

SCALE: 1/8"=1'-0"



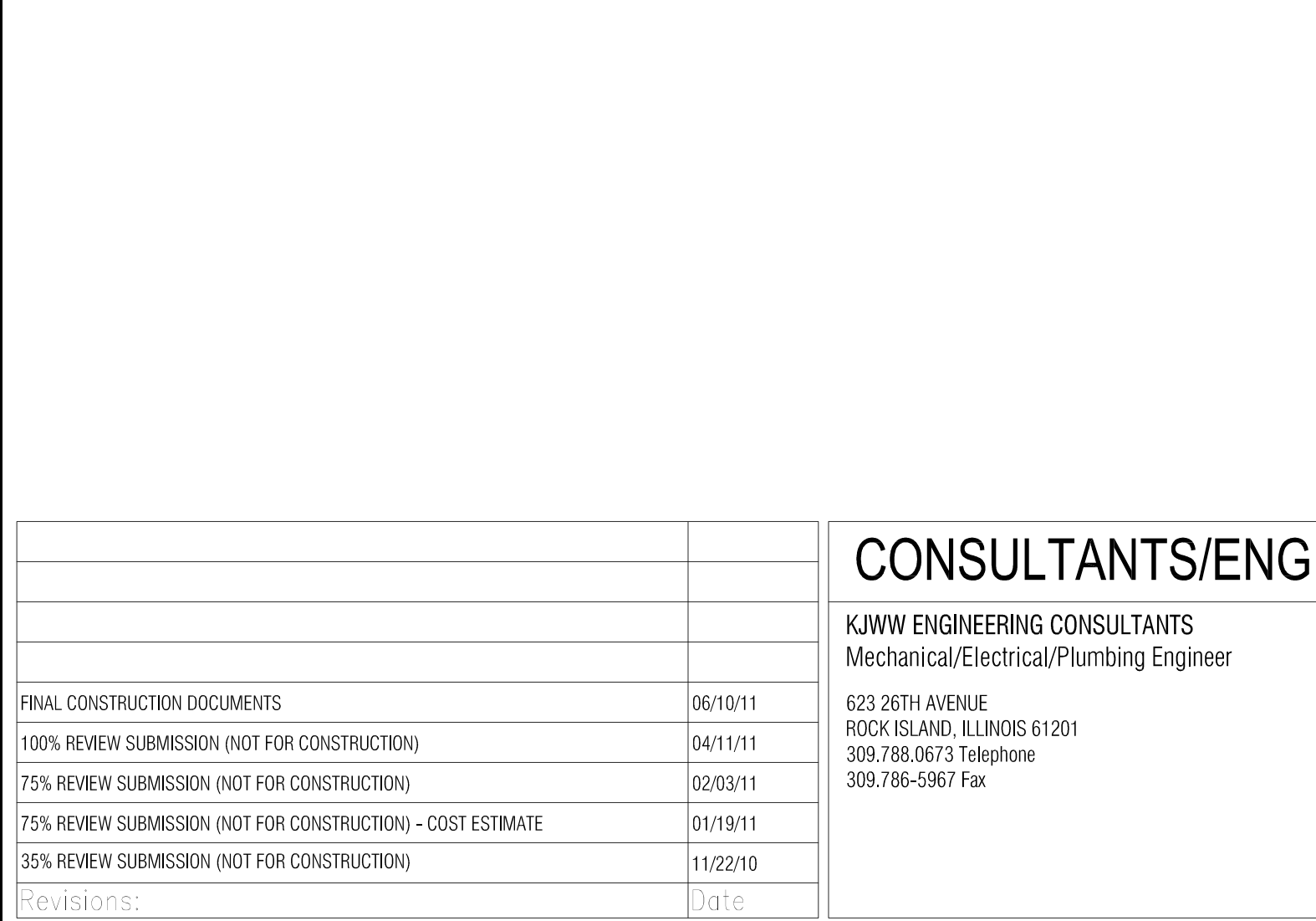
3 ENLARGED ELEVATOR LOBBY A-402 PLAN

SCALE: 1/8"=1'-0"



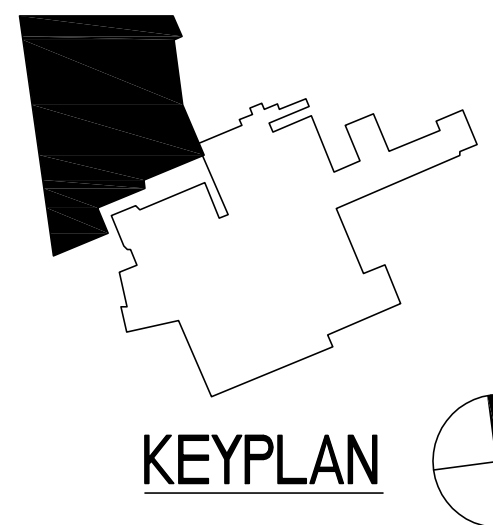
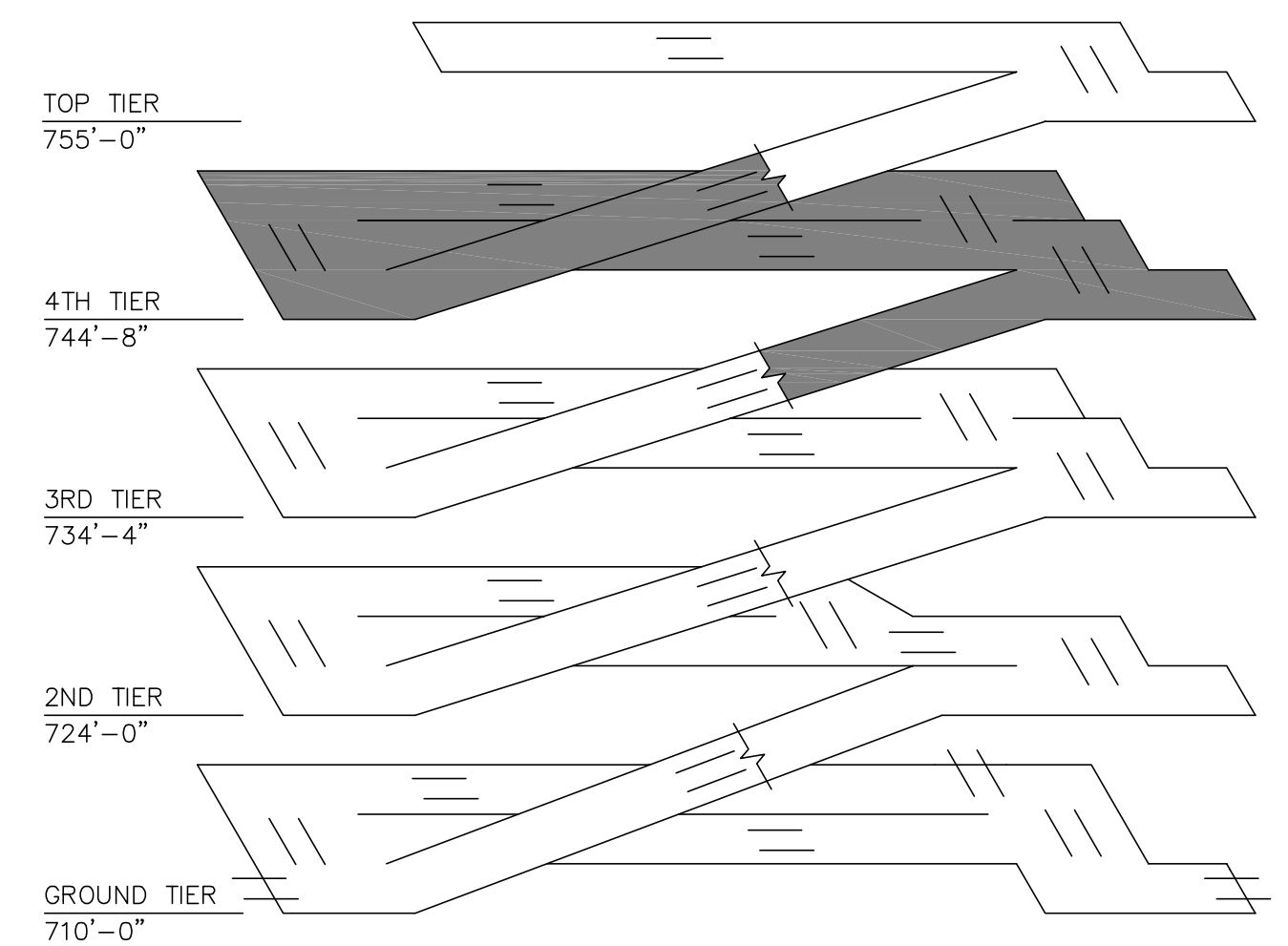
4 ENLARGED STAIRWELL A-404 PLAN

SCALE: 1/8"=1'-0"



1 FOURTH TIER PLAN - ELECTRICAL

SCALE: 1/16"=1'-0"



CONSULTANTS/ENGINEERS:

KJWW ENGINEERING CONSULTANTS
Mechanical/Electrical/Plumbing Engineer
623 26TH AVENUE
ROCK ISLAND, ILLINOIS 61201
309.788.0673 Telephone
309.786-5967 Fax

TERRACON
Geotechnical Engineer
2640 12TH STREET SW
CEDAR RAPIDS, IOWA 52404
319.366.8321 Telephone
319.366.0032 Fax

GRAEF
Civil Engineer/Landscape Architect
332 SOUTH MICHIGAN, SUITE 1400
CHICAGO, ILLINOIS 60604-4367
312.582.2020 Telephone
312.939.7014 Fax

WALKER PARKING CONSULTANTS
Structural Engineer
505 DAVIS ROAD
ELGIN, ILLINOIS 60123
847.697.2640 Telephone
847.697.7439 Fax

FAITHFUL+GOULD
Cost Management
222 SOUTH RIVERSIDE PLAZA, SUITE 2240
CHICAGO, ILLINOIS 60606
312.612.6319 Telephone
312.655.9037 Fax

ARCHITECT:

Loebl Schlossman & Hackl
Architecture•Planning•Interiors

Copyright © 2013 Loebl Schlossman & Hackl Inc.

233 North Michigan Avenue
Suite 3000
Chicago, Illinois 60601
312.565.1800 Telephone
312.565.5912 Facsimile
www.lshdesign.com

Drawing Title

FOURTH TIER PLAN - ELECTRICAL

Approved: Project Director

Iowa City VA Healthcare System
Department of Veterans Affairs Medical Center

Project Title

400 CAR PARKING GARAGE

IOWA CITY, IA

Date
06/10/2011

Checked
BRIWEG

Drawn
MATSNY

Project Number

636-402

Building Number
43

Drawing Number

43-E4

Dwg. 139 of 152

Office of
Construction
and Facilities
Management

Department of
Veterans Affairs