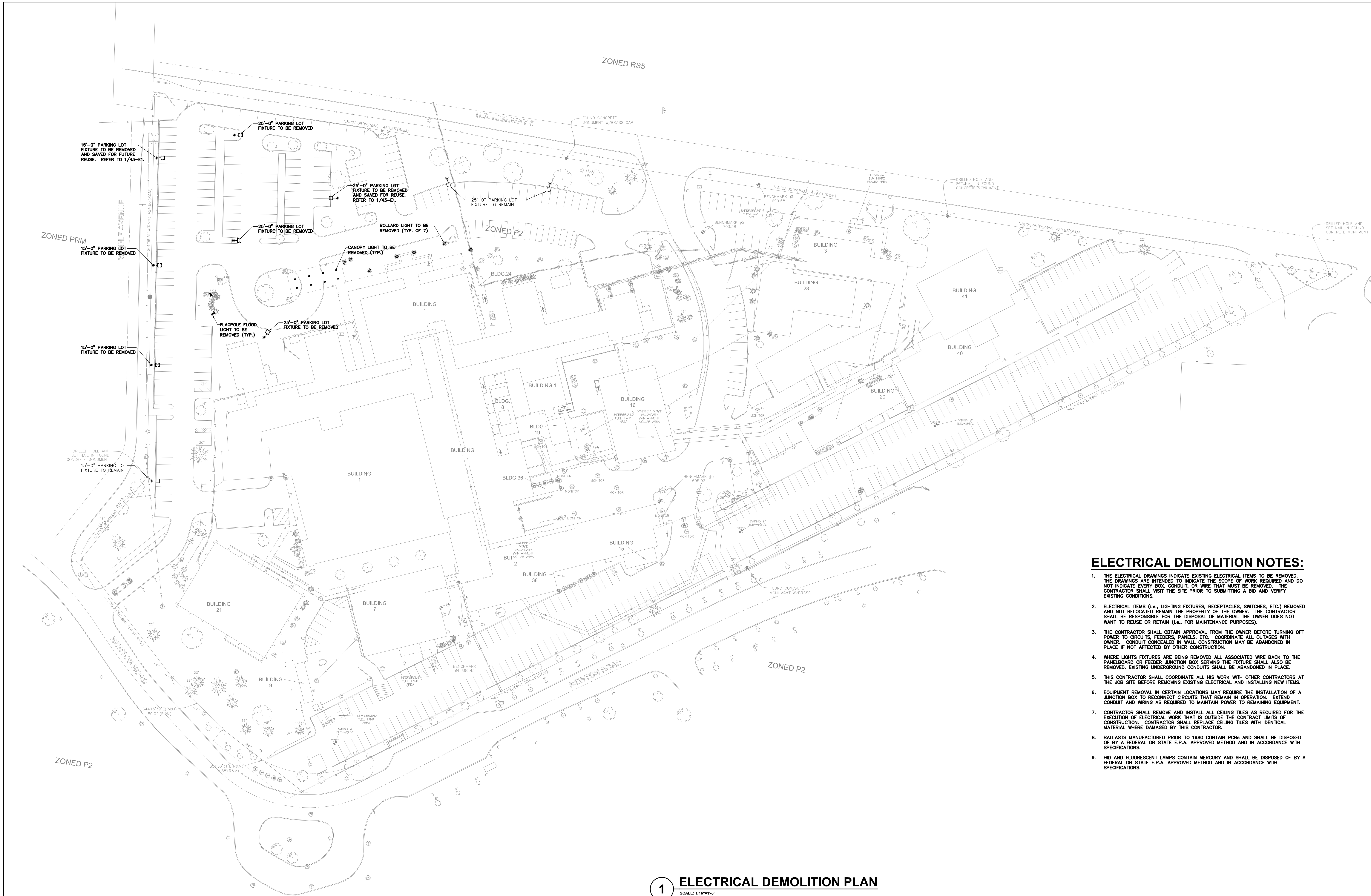


one eighth inch = one foot
one quarter inch = one foot
three eighths inch = one foot
one half inch = one foot
three quarters inch = one foot
one inch = one foot
one and one half inches = one foot
two inches = one foot
three inches = one foot
four inches = one foot
five inches = one foot
six inches = one foot
seven inches = one foot
eight inches = one foot
nine inches = one foot
ten inches = one foot
eleven inches = one foot
twelve inches = one foot
thirteen inches = one foot
fourteen inches = one foot
fifteen inches = one foot
sixteen inches = one foot
seventeen inches = one foot
eighteen inches = one foot
nineteen inches = one foot
twenty inches = one foot
twenty one inches = one foot
twenty two inches = one foot
twenty three inches = one foot
twenty four inches = one foot
twenty five inches = one foot
twenty six inches = one foot
twenty seven inches = one foot
twenty eight inches = one foot
twenty nine inches = one foot
thirty inches = one foot
thirty one inches = one foot
thirty two inches = one foot
thirty three inches = one foot
thirty four inches = one foot
thirty five inches = one foot
thirty six inches = one foot
thirty seven inches = one foot
thirty eight inches = one foot
thirty nine inches = one foot
forty inches = one foot
forty one inches = one foot
forty two inches = one foot
forty three inches = one foot
forty four inches = one foot
forty five inches = one foot
forty six inches = one foot
forty seven inches = one foot
forty eight inches = one foot
forty nine inches = one foot
fifty inches = one foot
fifty one inches = one foot
fifty two inches = one foot
fifty three inches = one foot
fifty four inches = one foot
fifty five inches = one foot
fifty six inches = one foot
fifty seven inches = one foot
fifty eight inches = one foot
fifty nine inches = one foot
sixty inches = one foot
sixty one inches = one foot
sixty two inches = one foot
sixty three inches = one foot
sixty four inches = one foot
sixty five inches = one foot
sixty six inches = one foot
sixty seven inches = one foot
sixty eight inches = one foot
sixty nine inches = one foot
seventy inches = one foot
seventy one inches = one foot
seventy two inches = one foot
seventy three inches = one foot
seventy four inches = one foot
seventy five inches = one foot
seventy six inches = one foot
seventy seven inches = one foot
seventy eight inches = one foot
seventy nine inches = one foot
eighty inches = one foot
eighty one inches = one foot
eighty two inches = one foot
eighty three inches = one foot
eighty four inches = one foot
eighty five inches = one foot
eighty six inches = one foot
eighty seven inches = one foot
eighty eight inches = one foot
eighty nine inches = one foot
ninety inches = one foot
ninety one inches = one foot
ninety two inches = one foot
ninety three inches = one foot
ninety four inches = one foot
ninety five inches = one foot
ninety six inches = one foot
ninety seven inches = one foot
ninety eight inches = one foot
ninety nine inches = one foot
one hundred inches = one foot



ELECTRICAL DEMOLITION NOTES:

1. THE ELECTRICAL DRAWINGS INDICATE EXISTING ELECTRICAL ITEMS TO BE REMOVED. THE DRAWINGS ARE INTENDED TO INDICATE THE SCOPE OF WORK REQUIRED AND DO NOT INDICATE EVERY BOX, CONDUIT, OR WIRE THAT MUST BE REMOVED. THE CONTRACTOR SHALL VISIT THE SITE PRIOR TO SUBMITTING A BID AND VERIFY EXISTING CONDITIONS.
2. ELECTRICAL ITEMS (I.E., LIGHTING FIXTURES, RECEPTACLES, SWITCHES, ETC.) REMOVED AND NOT RELOCATED REMAIN THE PROPERTY OF THE OWNER. THE CONTRACTOR SHALL BE RESPONSIBLE FOR THE DISPOSAL OF MATERIAL. THE OWNER DOES NOT WANT TO REUSE OR RETAIN (I.E., FOR MAINTENANCE PURPOSES).
3. THE CONTRACTOR SHALL OBTAIN APPROVAL FROM THE OWNER BEFORE TURNING OFF POWER TO CIRCUITS, FEEDERS, PANELS, ETC. COORDINATE ALL OUTAGES WITH OWNER. CONDUIT CONCEALED IN WALL CONSTRUCTION MAY BE ABANDONED IN PLACE IF NOT AFFECTED BY OTHER CONSTRUCTION.
4. WHERE LIGHTS FIXTURES ARE BEING REMOVED ALL ASSOCIATED WIRE BACK TO THE PANELBOARD OR FEEDER JUNCTION BOX SERVING THE FIXTURE SHALL ALSO BE REMOVED. EXISTING UNDERGROUND CONDUITS SHALL BE ABANDONED IN PLACE.
5. THIS CONTRACTOR SHALL COORDINATE ALL HIS WORK WITH OTHER CONTRACTORS AT THE JOB SITE BEFORE REMOVING EXISTING ELECTRICAL AND INSTALLING NEW ITEMS.
6. EQUIPMENT REMOVAL IN CERTAIN LOCATIONS MAY REQUIRE THE INSTALLATION OF A JUNCTION BOX TO RECONNECT CIRCUITS THAT REMAIN IN OPERATION. EXTEND CONDUIT AND WIRING AS REQUIRED TO MAINTAIN POWER TO REMAINING EQUIPMENT.
7. CONTRACTOR SHALL REMOVE AND INSTALL ALL CEILING TILES AS REQUIRED FOR THE EXECUTION OF ELECTRICAL WORK THAT IS OUTSIDE THE CONTRACT LIMITS OF CONSTRUCTION. CONTRACTOR SHALL REPLACE CEILING TILES WITH IDENTICAL MATERIAL WHERE DAMAGED BY THIS CONTRACTOR.
8. BALLASTS MANUFACTURED PRIOR TO 1980 CONTAIN PCBs AND SHALL BE DISPOSED OF BY A FEDERAL OR STATE E.P.A. APPROVED METHOD AND IN ACCORDANCE WITH SPECIFICATIONS.
9. HID AND FLUORESCENT LAMPS CONTAIN MERCURY AND SHALL BE DISPOSED OF BY A FEDERAL OR STATE E.P.A. APPROVED METHOD AND IN ACCORDANCE WITH SPECIFICATIONS.

1 ELECTRICAL DEMOLITION PLAN
SCALE: 1/16"=1'-0"

		CONSULTANTS/ENGINEERS:				ARCHITECT:		Drawing Title		Project Info		Project Number		Office of Construction and Facilities Management Department of Veterans Affairs			
		KJMW ENGINEERING CONSULTANTS Mechanical/Electrical/Plumbing Engineer		TERRACON Geotechnical Engineer		GRAEF Civil Engineer/Landscape Architect		WALKER PARKING CONSULTANTS Structural Engineer		FAITHFUL+GOULD Cost Management		233 North Michigan Avenue Suite 3000 Chicago, Illinois 60601				636-402	
FINAL CONSTRUCTION DOCUMENTS		06/10/11		623 26TH AVENUE ROCK ISLAND, ILLINOIS 61201 309.788.0673 Telephone 309.786-5967 Fax		332 SOUTH MICHIGAN, SUITE 1400 CHICAGO, ILLINOIS 60604-4367 319.366.8321 Telephone 319.366.0032 Fax		505 DAVIS ROAD ELGIN, ILLINOIS 60123 847.697.2640 Telephone 847.697.7439 Fax		222 SOUTH RIVERSIDE PLAZA, SUITE 2240 CHICAGO, ILLINOIS 60606 312.562.2500 Telephone 312.655.9037 Fax		ELECTRICAL DEMOLITION PLAN				Building Number 43	
100% REVIEW SUBMISSION (NOT FOR CONSTRUCTION)		04/11/11										400 CAR PARKING GARAGE				Drawing Number	
75% REVIEW SUBMISSION (NOT FOR CONSTRUCTION)		02/03/11										IOWA CITY, IA				43-E0	
75% REVIEW SUBMISSION (NOT FOR CONSTRUCTION) - COST ESTIMATE		01/19/11										Location				Drawing Number	
35% REVIEW SUBMISSION (NOT FOR CONSTRUCTION)		11/22/10										Date				43-E0	
Revisions:		Date										Checked				Drawn	
												06/10/2011				BRIWEG	
												MATSNY				Dwg. 135 of 152	
												Iowa City VA Healthcare System Department of Veterans Affairs Medical Center					