

PLANT SCHEDULE

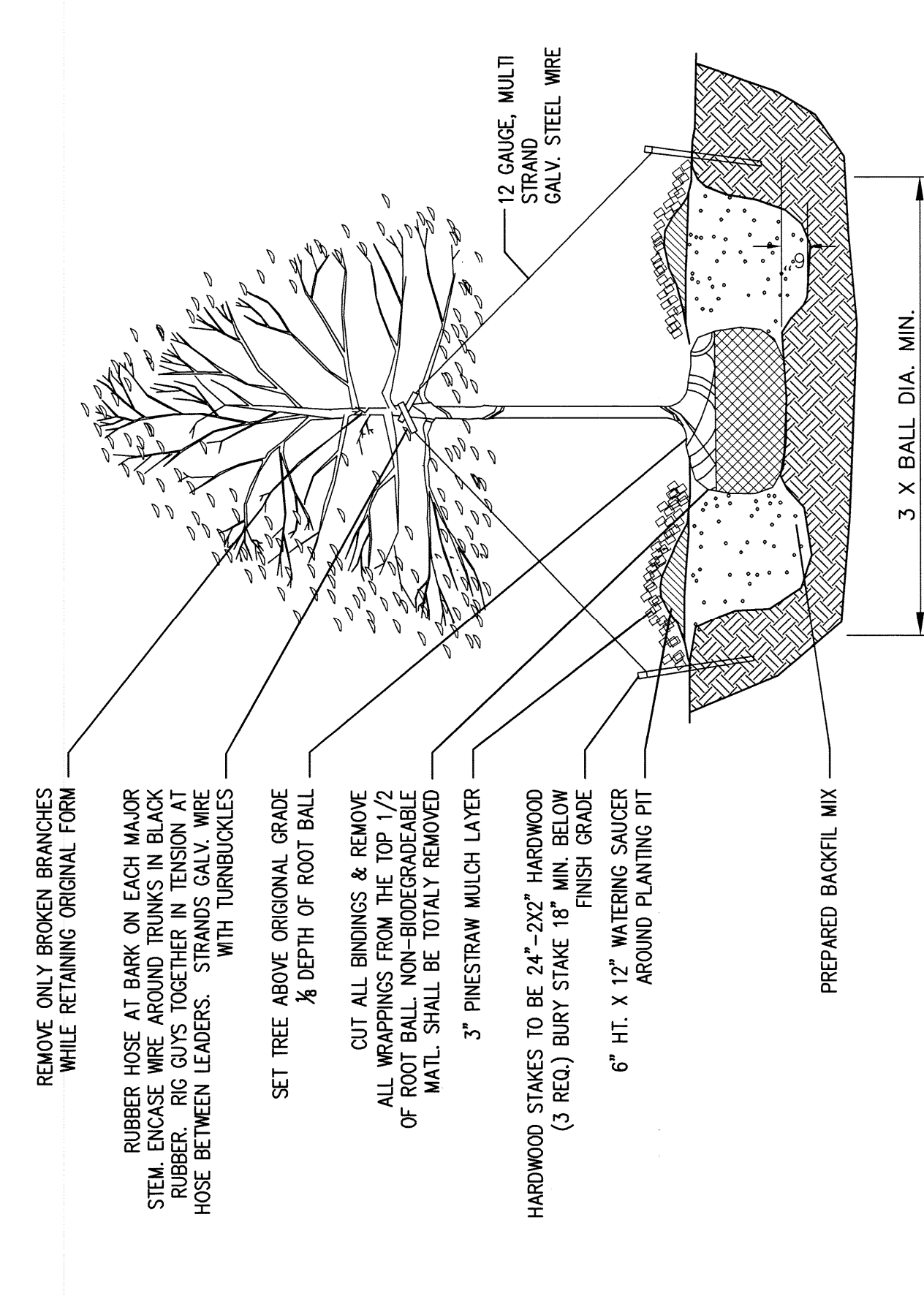
SYMBOL	QTY.	BOTANICAL NAME	PLANT NAME	SIZE	SPACING	NOTES & COMMENTS
<b>TREES</b>						
AR	7	ACER RUBRUM	RED MAPLE	2" CAL.	AS SHOWN	10' FT. MINIMUM
QV	18	QUERCUS PHELLOS	WILLOW OAK	2" CAL.	AS SHOWN	10' FT. MINIMUM
TD	16	TAXODIUM DISTICHUM	BALD CYPRESS	2" CAL.	AS SHOWN	10' FT. MINIMUM
UA	12	ULMUS ALATA	WINGED ELM	2" CAL.	AS SHOWN	10' FT. MINIMUM
<b>TURFGRASS</b>						
SOD	FM	CYNODON SPP. TIPWAY 419	BERMUDA SOD	SOD	AS SHOWN	CONTRACTOR SHALL FIELD MEASURE

PLANTING NOTES:

- ADHERE TO PLANS AND SPECIFICATIONS FOR ALL PHASES OF WORK.
- VERIFY ALL UTILITY LOCATIONS IN THE FIELD BEFORE BEGINNING WORK.
- VERIFY ALL DIMENSIONS AND QUANTITIES ON PLAN BEFORE BEGINNING WORK.
- STAKE PLANT LOCATIONS FOR APPROVAL BY THE OWNER BEFORE INSTALLATION.
- ADJUST STAKED LOCATIONS AS DIRECTED.
- ALL NURSERY STOCK SHALL BE IN ACCORDANCE WITH AMERICAN STANDARD FOR NURSERY STOCK. ALL PLANTS SHALL BE GRADE NO. 1 OR BETTER.
- MULCH PLANT BEDS AND PLANTING BEDS WITH SPECIFIED MULCH TO THE DEPTH AND WIDTH SPECIFIED.
- HOLD BACK ALL PROPOSED SOD, GROUNDCOVERS AND/OR SHRUBS A MINIMUM OF 6' FROM EXISTING TREES.
- PREPARE ALL TOPSOIL USED IN TREE AND SHRUB PITS AND IN GROUND COVER AREAS TO MEET THE FOLLOWING SPECIFICATIONS:
  - 2 PARTS TOPSOIL AS SPECIFIED
  - 1 PARTS DECOMPOSED ORGANIC MATTER
- PREMIX TOPSOIL BEFORE PLACING IN BED OR PIT. USES BROWN OR REDDISH BROWN TOPSOIL WITH A PH OF 6.5 TO 7.5. REPLACE IMMEDIATELY DEFOLIATES WITHIN FIVE DAYS AFTER PLANTING.
- MAINTAIN ALL PLANT MATERIAL UNTIL SUBSTANTIAL COMPLETION UNLESS OTHERWISE SPECIFIED. WEEDING, MULCHING, STRAIGHTENING, FERTILIZING, CLEANUP, AND OTHER TASKS AS NEEDED.
- GUARANTEE ALL MATERIAL AND WORKMANSHIP FOR A PERIOD OF ONE YEAR.
- GUARANTEE ALL PLANT MATERIALS IN ACCORDANCE WITH LOCAL CODES AND ORDINANCES.
- NO GRAFTED TREES WILL BE ACCEPTED.

GENERAL NOTES:

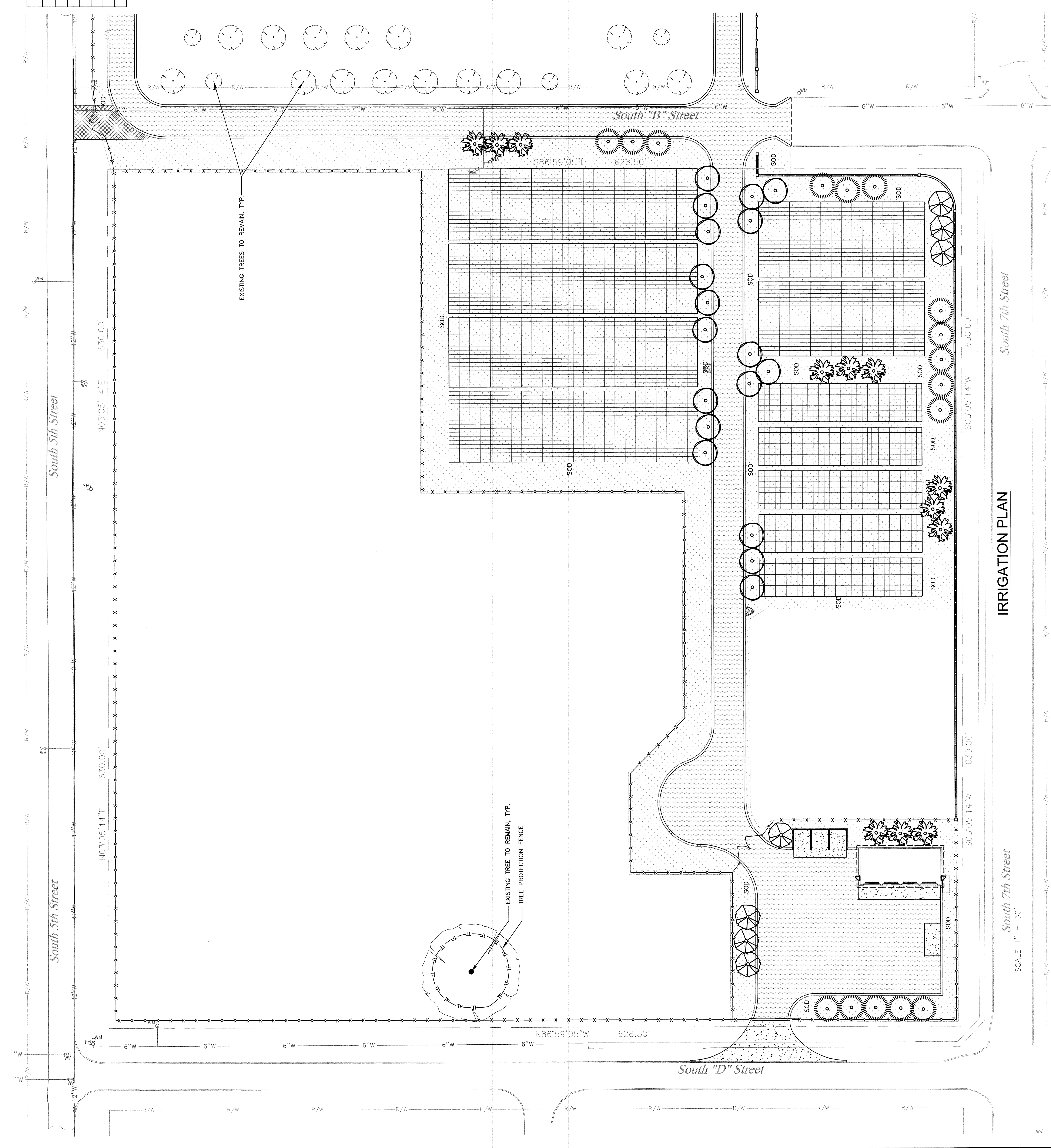
- SEE SHEET X-1 FOR CIVIL LEGEND, ABBREVIATIONS, AND GENERAL NOTES.
- CONTRACTOR IS RESPONSIBLE FOR ALL WORK SHOWN UNLESS SPECIFICALLY INDICATED OTHERWISE.
- CONTRACTOR SHALL VISIT THE SITE PRIOR TO CONSTRUCTION TO DETERMINE THE EXTENT OF THE PROJECT.
- CONTRACTOR SHALL CONTACT ARKANSAS ONE CALL AT 811 PRIOR TO ANY WORK. CONTRACTOR IS RESPONSIBLE FOR FIELD LOCATING AND PROTECTING ALL UTILITIES. CONTACT THE ENGINEER IN THE EVENT THAT THE UTILITIES CONFLICT WITH THE PLAN DRAWINGS.
- ALL PROJECT STAKEOUT SHALL BE PERFORMED BY AN ARKANSAS REGISTERED PROFESSIONAL SURVEYOR.
- DO NOT WORK UPON NOR STORE ANY MATERIALS ON OCCUPIED GRAVE PLOTS. ALL EFFORT WILL BE MADE TO MAINTAIN DISTANCE FROM OCCUPIED GRAVE PLOTS.



TYPICAL TREE PLANTING-STAKING  
DETAIL  
SCALE: N.T.S.

SYMBOL LEGEND

	ACER RUBRUM
	QUERCUS PHELLOS
	TAXODIUM DISTICHUM
	ULMUS ALATA



IRRIGATION PLAN  
SCALE 1" = 30'

<p><b>Project Title</b> GRAVESTONE EXPANSION PROJECT FORT SMITH NATIONAL CEMETERY</p>		<p><b>Date</b></p>	
<p><b>Project No.</b> 847-005-016</p>		<p><b>Project</b> GKC</p>	
<p><b>Building Number</b> CAP</p>		<p><b>Drawing No.</b> L-14</p>	
<p><b>Location</b> FORT SMITH, ARKANSAS</p>		<p><b>Dwg. 21 of 42</b></p>	
<p><b>Approved: Director, Technical Support Services</b></p>			
<p><b>Approved: Chief, Architectural &amp; Engineering Division</b></p>			
<p><b>LANDSCAPE PLANTING PLAN &amp; DETAILS</b></p>			
<p><b>ENGINEER:</b> <b>MACTEC</b> MACTEC ENGINEERING AND CONSULTING, INC. 3200 TOWN POINT DR., KENNESAW, GA. 30144 TEL: (770) 421-3400 FAX: (770) 421-3486</p>			
<p><b>REVISIONS</b></p>			