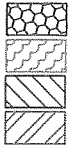


Explanation:



ACM Black Residual Floor Adhesive
 ACM Flooring Mastic
 ACM Floor Tile
 ACM Vinyl Sheet Flooring



ACM Ceiling Tile



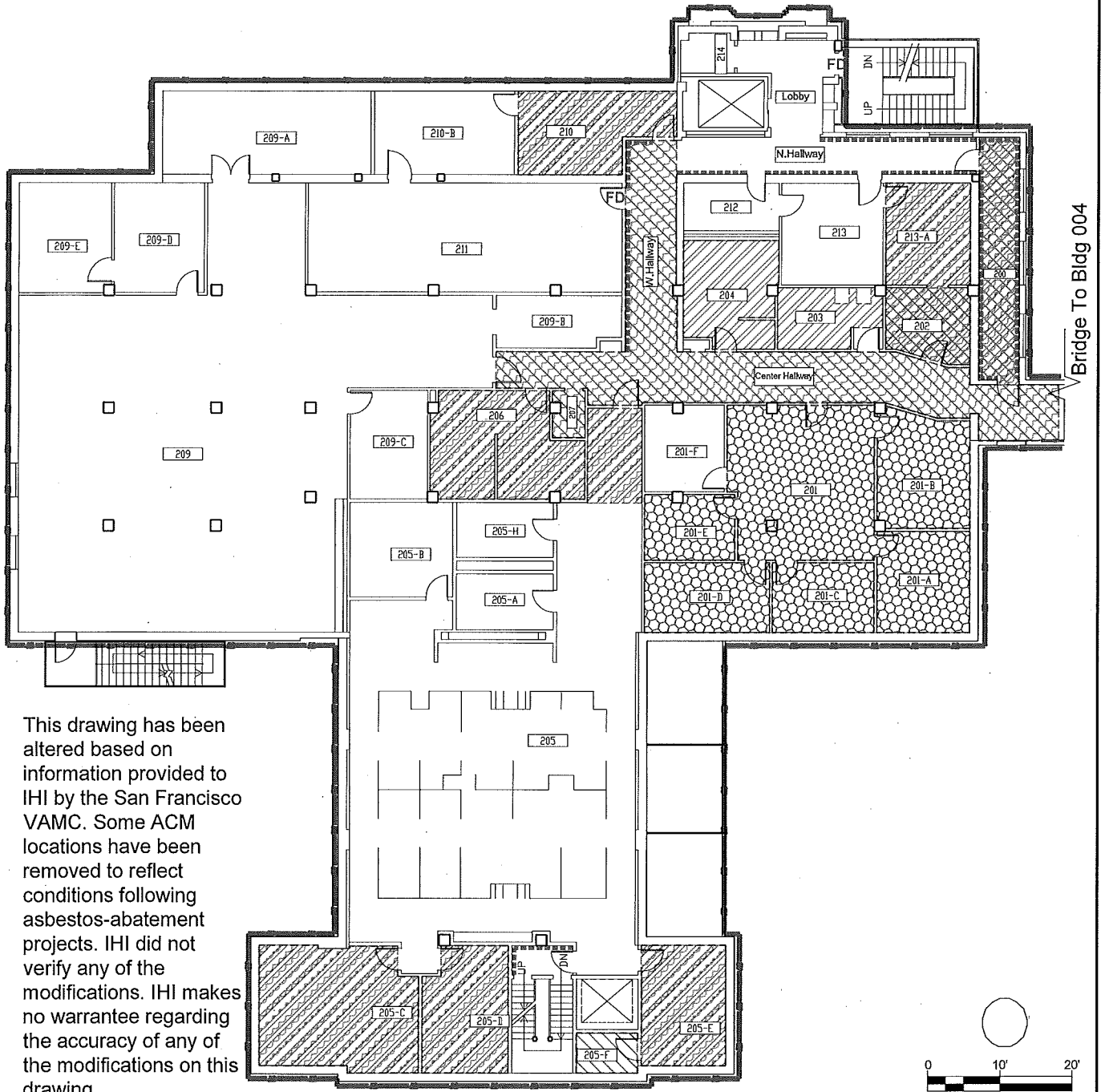
ACM Fire Door (Assumed)



ACM Skim Coat



ACM Stucco And Decorative Plaster



This drawing has been altered based on information provided to IHI by the San Francisco VAMC. Some ACM locations have been removed to reflect conditions following asbestos-abatement projects. IHI did not verify any of the modifications. IHI makes no warrantee regarding the accuracy of any of the modifications on this drawing.

IHI
 ENVIRONMENTAL
 1260 45th Street
 Emeryville, CA 94608-2907
 510.923.1661
 calif@ihi-env.com

SF VA Medical Center
 Building : 006
 Second Floor

Asbestos Material Location

PROJECT No: 09B-2173
 SHEET NO: 006 FP02 ML
 DRAWN BY: S. Rahman
 DATE: 11-02-09
 REVISED BY: M. Bishop
 DATE: 02-09-15