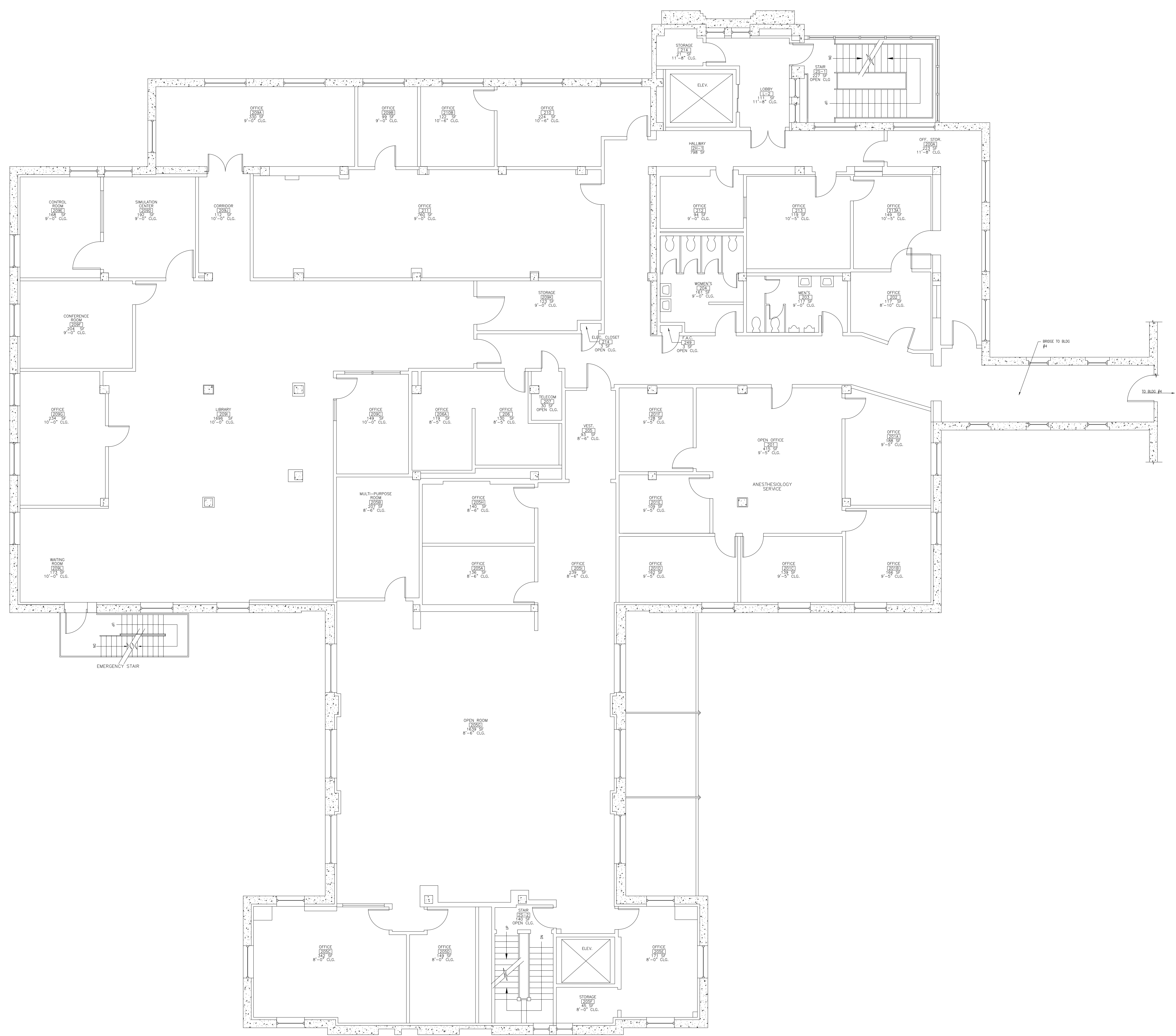
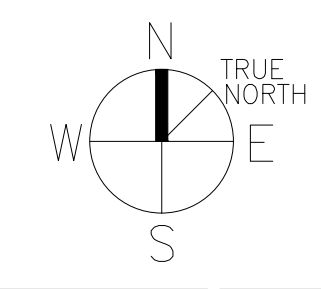


three inches = one foot  
 one and one half inches = one foot  
 one inch = one foot  
 three quarters inch = one foot  
 one half inch = one foot  
 three eighths inch = one foot  
 one quarter inch = one foot  
 three eighths inch = one foot  
 one eighth inch = one foot  
 one eighth inch = one foot

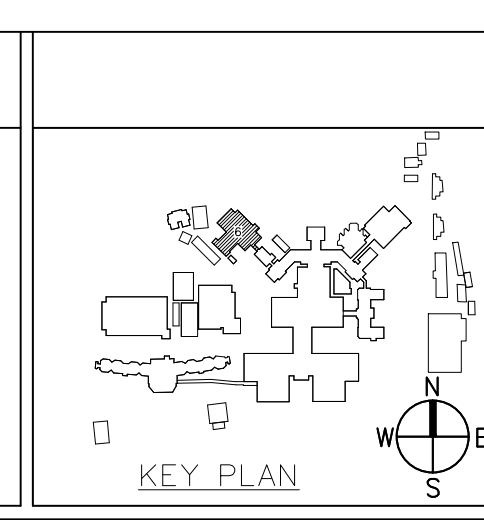


**1 SECOND FLOOR PLAN - BLDG. 6**  
 N.T.S.



Revisions	Date

**CONSULTANTS:**



**ARCHITECT/ENGINEERS:**

\\STAMPS AND LOGO IMAGE\Logo2011 B+W.jpg

**Drawing Title**  
 SECOND FLOOR PLAN

**Approved Project Director**

**Project Title**  
 UPDATE of AUTOCAD FLOOR PLANS and SPACE FILES

**Location**  
 VAMC SAN FRANCISCO CA 94121

**Date**  
 3-31-2015

**Checked**  
 ARK

**Drawn**  
 JM

**Project Number**  
 662-14-207

**Building Number**  
 6

**Drawing Number**  
 Dwg. 13 of 24

**Office of Construction and Facilities Management**

Department of Veterans Affairs