

three inches = one foot
one and one half inches = one foot
one inch = one foot
three quarters inch = one foot
one half inch = one foot
three eighths inch = one foot
one quarter inch = one foot
one eighth inch = one foot



PHOTO # 1



PHOTO # 2

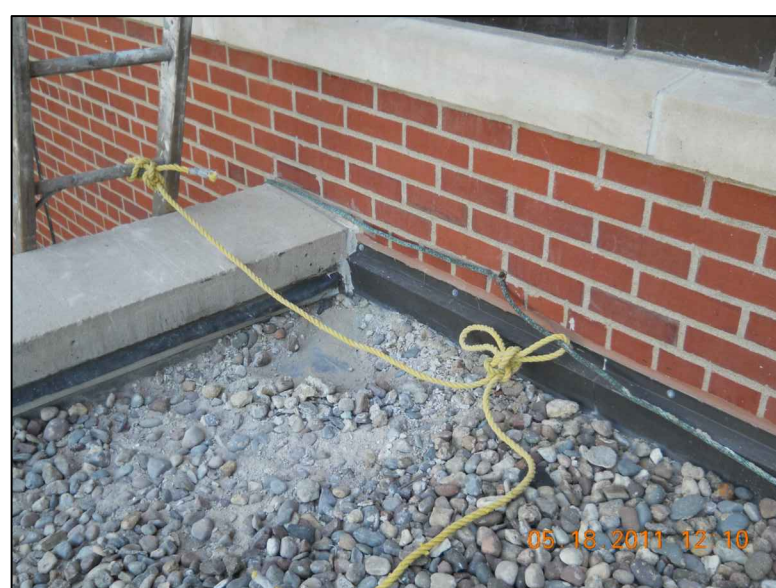


PHOTO # 3



PHOTO # 4

GENERAL NOTES:

CONTRACTOR IS TO ENSURE THAT ALL PERSONNEL WORKING ON THIS PROJECT ARE PROTECTED VIA FALL PROTECTION EQUIPMENT AND PROCEDURES IN ACCORDANCE WITH OSHA SAFETY STANDARDS.

ALL DIMENSIONS, INSULATION THICKNESSES AND ROOF SLOPES TO BE FIELD VERIFIED.

REMOVE EXISTING SINGLE-PLY ROOF SYSTEM TO SUBSTRATE.

REMOVE EXISTING BASE FLASHING FROM ROOF PERIMETER AND AROUND ALL ROOF PENETRATIONS.

DOCUMENT LOCATION, MARK, REMOVE AND STORE THE EXISTING CATHODIC PROTECTION SYSTEM. PROVIDE NEW CABLEING AND ROOF ATTACHMENTS, AND REINSTALL AFTER INSTALLATION OF NEW ROOF ASSEMBLY PER DETAILS SET FORTH ON DRAWING I-A16. REMOVAL AND REINSTALLATION WORK BY A UL-CERTIFIED CONTRACTOR ACCORDING TO VA LIGHTNING PROTECTION SPEC.

REMOVE AND DISPOSE OF ALL DEMOLITION DEBRIS MATERIAL OFF-SITE PER VAMC SPECS. REF. TO SPECIFICATION SECTION 01 74 19.

INSTALL NEW BASE FLASHING AS SHOWN ON ROOF PENETRATION AND PERIMETER WALL DETAILS ON I-A14 AND I-A15.

INSTALL NEW MODIFIED BITUMEN ROOFING ON ALL ROOF SURFACES THIS SHEET. NEW INSULATION THICKNESS TO AVERAGE OF R-33 VALUE FOR WHOLE ROOF. REF. TO SPECIFICATION SECTION 07 22 00-2. SLOPE ROOF SURFACE TO DRAINS TO ENSURE POSITIVE DRAINAGE.

INSTALL COUNTER FLASHING AND SEALANTS AS DETAILED ON I-A14.

SPLICE NEW ROOFING SYSTEM AT INTERFACE WITH EXISTING ROOF DRAIN AND SCUPPERS.

REMOVE DEBRIS, EQUIPMENT AND EXTRA MATERIAL UPON COMPLETION OF WORK, LEAVING ALL SURFACES IN A CLEAN CONDITION.



KEYED NOTES:

INSTALL NEW TREATED BLOCKING TO STABILIZE CLUSTERED HOT STACK PIPING AS SHOWN IN DETAIL 12-1-A15.

- SYMBOL LEGEND**
- ROOF PENETRATION
 - ROOF BLOCKING
 - MECHANICAL EQUIPMENT
 - ROUND ROOF PENETRATION
 - ROOF VENT
 - ROOF DRAIN
 - SCUPPER
 - ROOF HATCH
 - ROOF LADDER
 - ROOF TIE-OFF

FIRST FLOOR NORTH ROOF

SCALE: 1/4"=1'-0"

CONSULTANTS:		ARCHITECT/ENGINEERS:		Drawing Title		Project Title		Project Number		Office of Construction and Facilities Management  Department of Veterans Affairs		
Roofing Consultant: Robert L. Dye, LC PO BOX 4581 Overland Park, Kansas, 66204		Industrial Hygiene Consultant: John A. Jurgiel + Associates, Inc. 1810 Craig Road, Suite 207 St. Louis, Missouri 63146		 1401 Indian Pipe Lane, Wildwood, MO. 63038 Phone (314) 401-4078 phoenixdzn@yahoo.com		REPLACE MAJOR ROOFS BUILDING # 1		636A8-11-004				
						Location IOWA CITY VAMC, IOWA		Building Number BLDG # 1				
Revisions:						Approved: Project Director		Drawing Number 1-A2				
Date						Date 03-13-2012		Checked RWT			Drawn REC	
								Dwg. 3 of 18				