

A
—
B
—
C
—
D
—
E
—
F

three inches = one foot
one and one half inches = one foot
one inch = one foot
three quarters inch = one foot
one half inch = one foot
three eighths inch = one foot
one quarter inch = one foot
one eighth inch = one foot

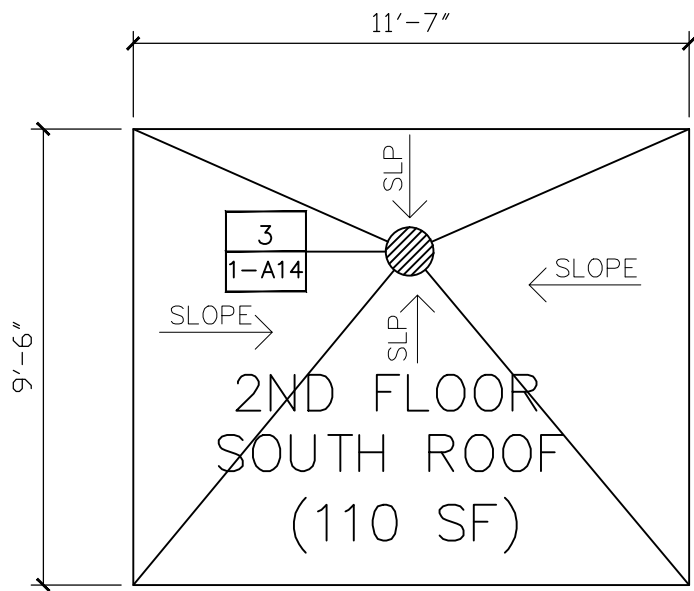
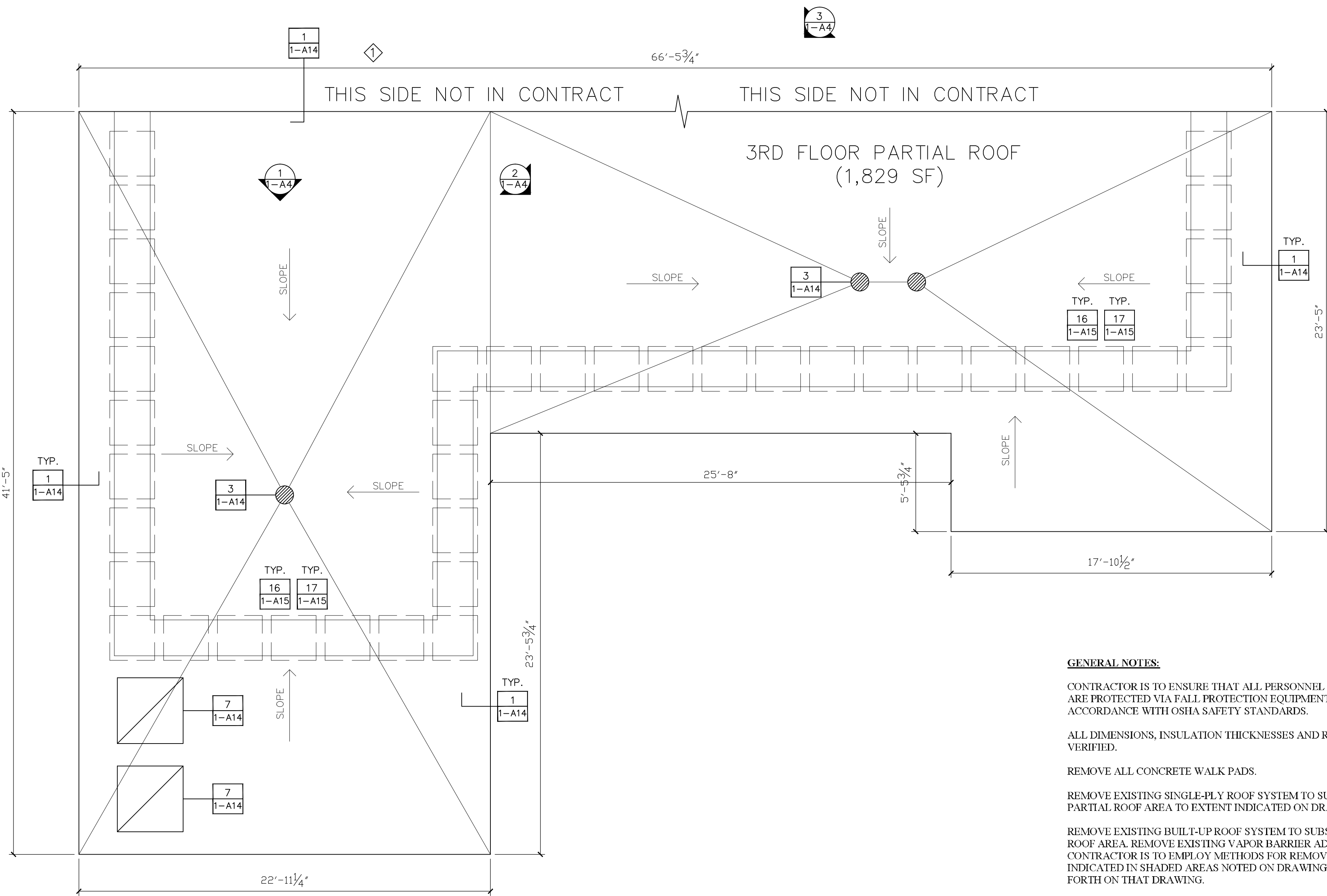


PHOTO # 6

- SYMBOL LEGEND**
- ROOF PENETRATION
 - ROOF BLOCKING
 - MECHANICAL EQUIPMENT
 - ROUND ROOF PENETRATION
 - ROOF VENT
 - ROOF DRAIN
 - SCUPPER
 - ROOF HATCH
 - ROOF LADDER
 - ROOF TIE-OFF

GENERAL NOTES:

CONTRACTOR IS TO ENSURE THAT ALL PERSONNEL WORKING ON THIS PROJECT ARE PROTECTED VIA FALL PROTECTION EQUIPMENT AND PROCEDURES IN ACCORDANCE WITH OSHA SAFETY STANDARDS.

ALL DIMENSIONS, INSULATION THICKNESSES AND ROOF SLOPES TO BE FIELD VERIFIED.

REMOVE ALL CONCRETE WALK PADS.

REMOVE EXISTING SINGLE-PLY ROOF SYSTEM TO SUBSTRATE ON 3RD FLOOR PARTIAL ROOF AREA TO EXTENT INDICATED ON DRAWING.

REMOVE EXISTING BUILT-UP ROOF SYSTEM TO SUBSTRATE ON 4TH FLOOR SOUTH ROOF AREA. REMOVE EXISTING VAPOR BARRIER ADHERED TO CONCRETE DECK. CONTRACTOR IS TO EMPLOY METHODS FOR REMOVAL OF ROOF MATERIAL INDICATED IN SHADED AREAS NOTED ON DRAWING I-HA1 PER PROCEDURES SET FORTH ON THAT DRAWING.

REMOVE EXISTING BASE FLASHING FROM ROOF PERIMETER AND AROUND ALL ROOF PENETRATIONS.

REMOVE AND DISPOSE OF ALL DEMOLITION DEBRIS MATERIAL OFF-SITE PER VAMC SPECS. REF. TO SPECIFICATION SECTION 01 74 19.

INSTALL NEW BASE FLASHING AND COUNTERFLASHING AS SHOWN ON ROOF PENETRATION AND PERIMETER WALL DETAILS ON I-A14 AND I-A15.

INSTALL NEW MODIFIED BITUMEN ROOFING ON ALL ROOF SURFACES THIS SHEET. NEW INSULATION THICKNESS TO AVERAGE R-13 VALUE TO WHOLE ROOF. REF. TO SPECIFICATION SECTION 07 22 00-2. SLOPE ROOF SURFACE TO DRAINS TO ENSURE POSITIVE DRAINAGE. TEMPORARILY SPLICE NEW ROOF SYSTEM INTO EXISTING ROOF CONSTRUCTION IMMEDIATELY SOUTH OF 3RD FLOOR PARTIAL ROOF.

INSTALL COUNTER FLASHING AND SEALANTS AS DETAILED ON I-A14.

SPLICE NEW ROOFING SYSTEM AT INTERFACE WITH EXISTING ROOF DRAINS.

INSTALL NEW ROOF DRAIN STRAINER COVER ON 4TH FLOOR SOUTH ROOF.

INSTALL NEW METAL WALKWAY SYSTEM AS INDICATED ON DETAILS 16 AND 17 ON I-A15.

REMOVE DEBRIS, EQUIPMENT AND EXTRA MATERIAL UPON COMPLETION OF WORK, LEAVING ALL SURFACES IN A CLEAN CONDITION.

REF TO I-HA1 FOR ASBESTOS AND LEAD MATERIALS.

ALL EXISTING WALKWAYS TO BE REMOVED AND REPLACED WITH NEW METAL WALKWAYS SIMILAR TO EXISTING ON 10TH FLOOR EAST SIDE. SUPPORT PVC SQUARE PIPE INSTALLED @ 4'-0" OC TYP. SEE DETAILS 16 AND 17 ON I-A15.

KEY NOTE:

CONTRACTOR TO COORDINATE WITH 'OR' ADDITION CONTRACTOR FOR SPLICE OF THE NEW ROOF AND NEW ADDITION.

4
1-A9

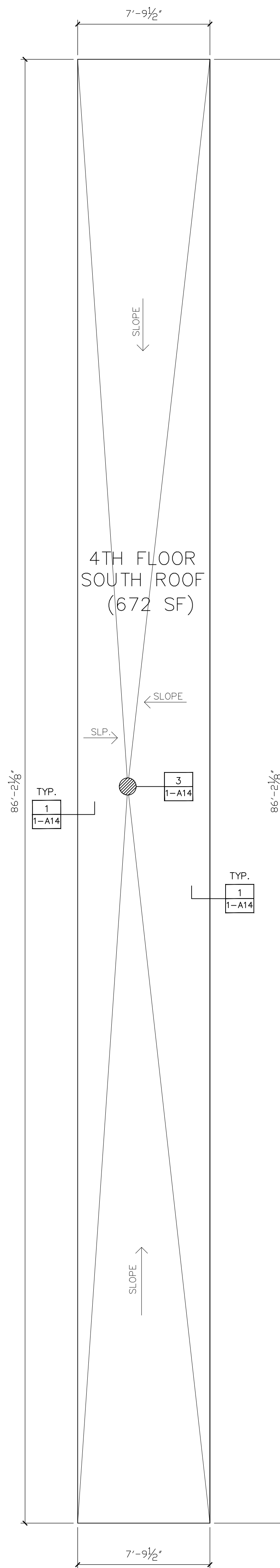


PHOTO # 1

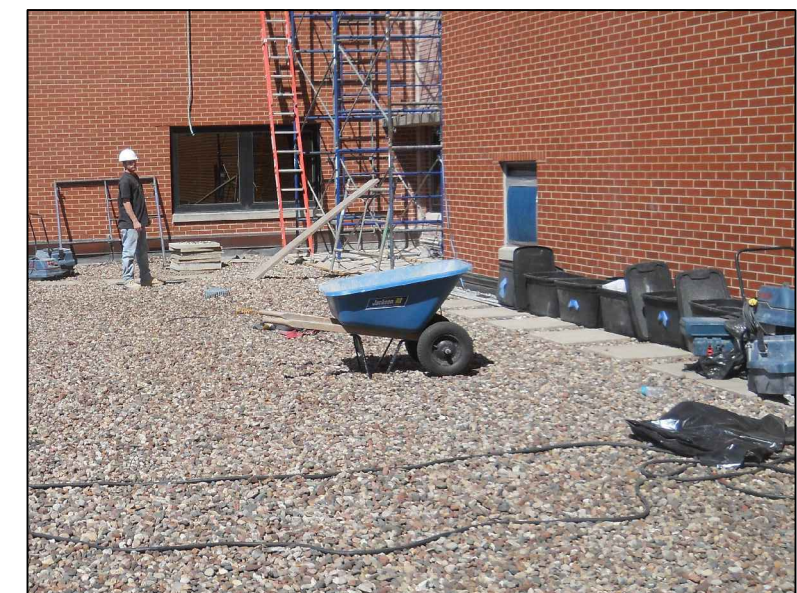


PHOTO # 2



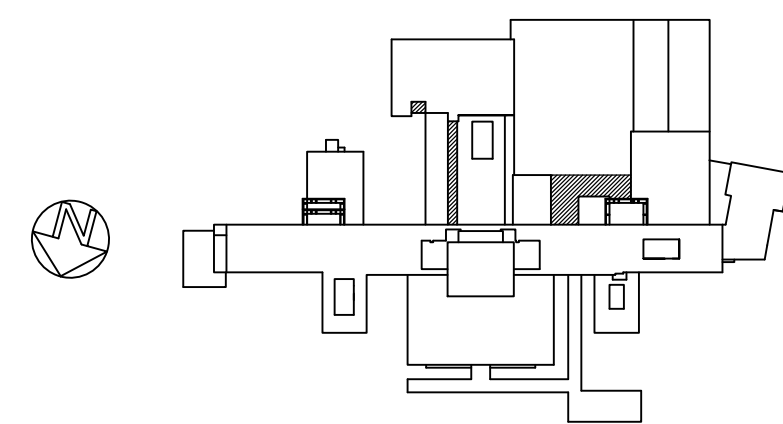
PHOTO # 3



PHOTO # 4

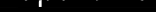



PHOTO # 5



SECOND, THIRD & FOURTH FLOOR ROOFS

SCALE: 1/4"=1'-0"

		CONSULTANTS:				ARCHITECT/ENGINEERS:		Drawing Title		Project Title		Project Number		<div>Office of Construction and Facilities Management</div> <div> Department of Veterans Affairs</div>	
		Roofing Consultant: Robert L Dye, LC PO BOX 4581 Overland Park, Kansas, 66204		Industrial Hygiene Consultant: John A. Jurgiel + Associates, Inc. 1810 Craig Road, Suite 207 St. Louis, Missouri 63146		<div></div> <div>1401 Indian Pipe Lane, Wildwood, MO. 63038 Phone (314) 401-4078 phoenixdzn@yahoo.com</div>		SECOND,THIRD FLOOR PARTIAL + FOURTH FLOOR EAST ROOF PLANS		REPLACE MAJOR ROOFS BUILDING # 1		636A8-11-004			
								Approved: Project Director		Location IOWA CITY VAMC, IOWA		Building Number BLDG # 1			
										Date 03-13-2012		Checked RWT		Drawn REC	
												Drawing Number 1-A4		Dwg. 5 of 18	