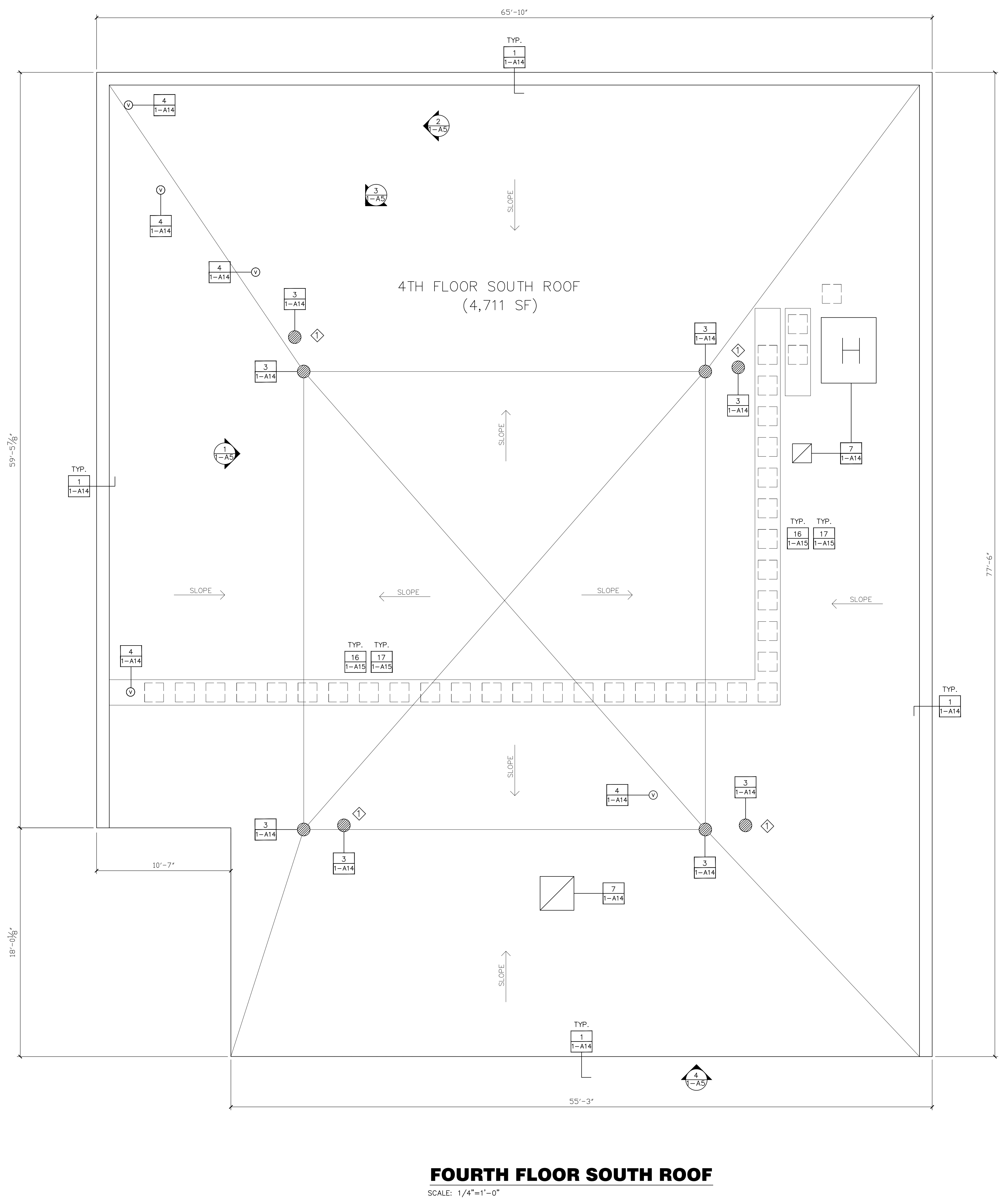


A
B
C
D
E
F

three inches = one foot
one and one half inches = one foot
one inch = one foot
three quarters inch = one foot
one half inch = one foot
three eighths inch = one foot
one quarter inch = one foot
one eighth inch = one foot



FOURTH FLOOR SOUTH ROOF
SCALE: 1/4"=1'-0"

- SYMBOL LEGEND**
- ROOF PENETRATION
 - ROOF BLOCKING
 - MECHANICAL EQUIPMENT
 - ROUND ROOF PENETRATION
 - ROOF VENT
 - ROOF DRAIN
 - SCUPPER
 - ROOF HATCH
 - ROOF LADDER
 - ROOF TIE-OFF

GENERAL NOTES:

CONTRACTOR IS TO ENSURE THAT ALL PERSONNEL WORKING ON THIS PROJECT ARE PROTECTED VIA FALL PROTECTION EQUIPMENT AND PROCEDURES IN ACCORDANCE WITH OSHA SAFETY STANDARDS.

ALL DIMENSIONS, INSULATION THICKNESSES AND ROOF SLOPES TO BE FIELD VERIFIED.

REMOVE ALL CONCRETE WALK PADS.

REMOVE EXISTING SINGLE-PLY ROOF SYSTEM TO SUBSTRATE.

DOCUMENT LOCATION, MARK, REMOVE AND STORE THE EXISTING CATHODIC PROTECTION SYSTEM. PROVIDE NEW CABLING AND ROOF ATTACHMENTS, AND REINSTALL AFTER INSTALLATION OF NEW ROOF ASSEMBLY PER DETAILS SET FORTH ON DRAWING 1-A16. REMOVAL AND REINSTALLATION WORK BY A UL-CERTIFIED CONTRACTOR AND VA LIGHTNING PROTECTION SPECS.

REMOVE EXISTING BASE FLASHING FROM ROOF PERIMETER AND AROUND ALL ROOF PENETRATIONS.

REMOVE AND DISPOSE OF ALL DEMOLITION DERRIS MATERIAL OFF-SITE PER VAMC SPECS. REF SPECIFICATION SECTION 01 74 19.

INSTALL NEW BASE FLASHING AND COUNTERFLASHING AS SHOWN ON ROOF PENETRATION AND PERIMETER WALL DETAILS ON 1-A14 AND 1-A15.

INSTALL NEW MODIFIED BITUMEN ROOFING ON ALL ROOF SURFACES THIS SHEET. NEW INSULATION THICKNESS TO AVERAGE R-33 VALUE FOR WHOLE ROOF. REF SPECIFICATION SECTION 07 22 00-2. SLOPE ROOF SURFACE TO DRAINS TO ENSURE POSITIVE DRAINAGE.

INSTALL COUNTER FLASHING AND SEALANTS AS DETAILED ON 1-A14.

ALL EXISTING WALKWAYS TO BE REMOVED AND REPLACE WITH NEW METAL WALKWAY SIMILAR TO EXISTING ON 10TH FLOOR EAST SIDE. SUPPORT PVC SQUARE PIPE TO BE INSTALLED @ 4'-0" OC, SEE DETAILS 16 & 17 ON 1-A15.

REMOVE DEBRIS, EQUIPMENT AND EXTRA MATERIAL UPON COMPLETION OF WORK, LEAVING ALL SURFACES IN A CLEAN CONDITION.

KEY NOTE:

◇ CONTRACTOR TO VERIFY ELEVATION OF OVERFLOW DRAINS TO BE HIGHER THAN PRIMARY ROOF DRAINS ELEVATION.



PHOTO # 1



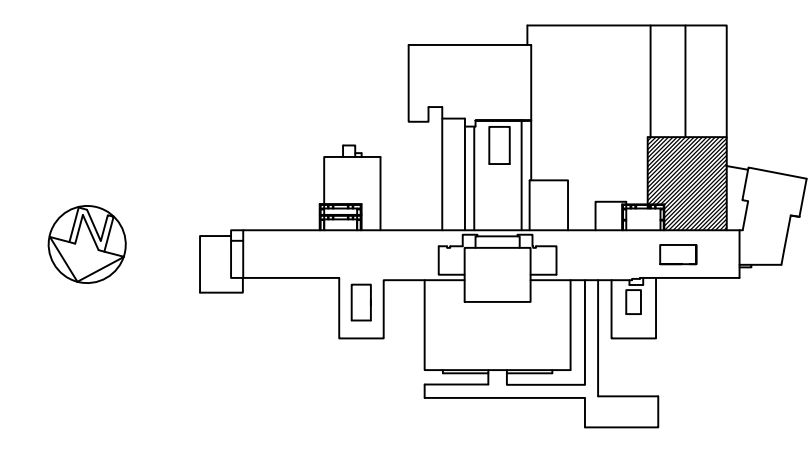
PHOTO # 2

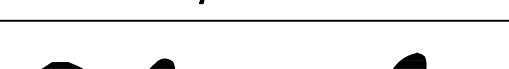


PHOTO # 3



PHOTO # 4



		CONSULTANTS:		ARCHITECT/ENGINEERS:		Drawing Title		Project Title		Project Number		Office of Construction and Facilities Management Department of Veterans Affairs			
		Roofing Consultant: Robert L Dye, LC PO BOX 4581 Overland Park, Kansas, 66204		Industrial Hygiene Consultant: John A. Jurgiel + Associates, Inc. 1810 Craig Road, Suite 207 St. Louis, Missouri 63146		FOURTH FLOOR SOUTH ROOF PLAN		REPLACE MAJOR ROOFS BUILDING # 1		636A8-11-004					
						1401 Indian Pipe Lane, Wildwood, MO. 63038 Phone (314) 401-4078 phoenixdzn@yahoo.com		Approved: Project Director		Location IOWA CITY VAMC, IOWA				Building Number BLDG # 1	
								Date 03-13-2012		Checked RWT				Drawing Number 1-A5	
Revisions:		Date												Dwg. 6 of 18	