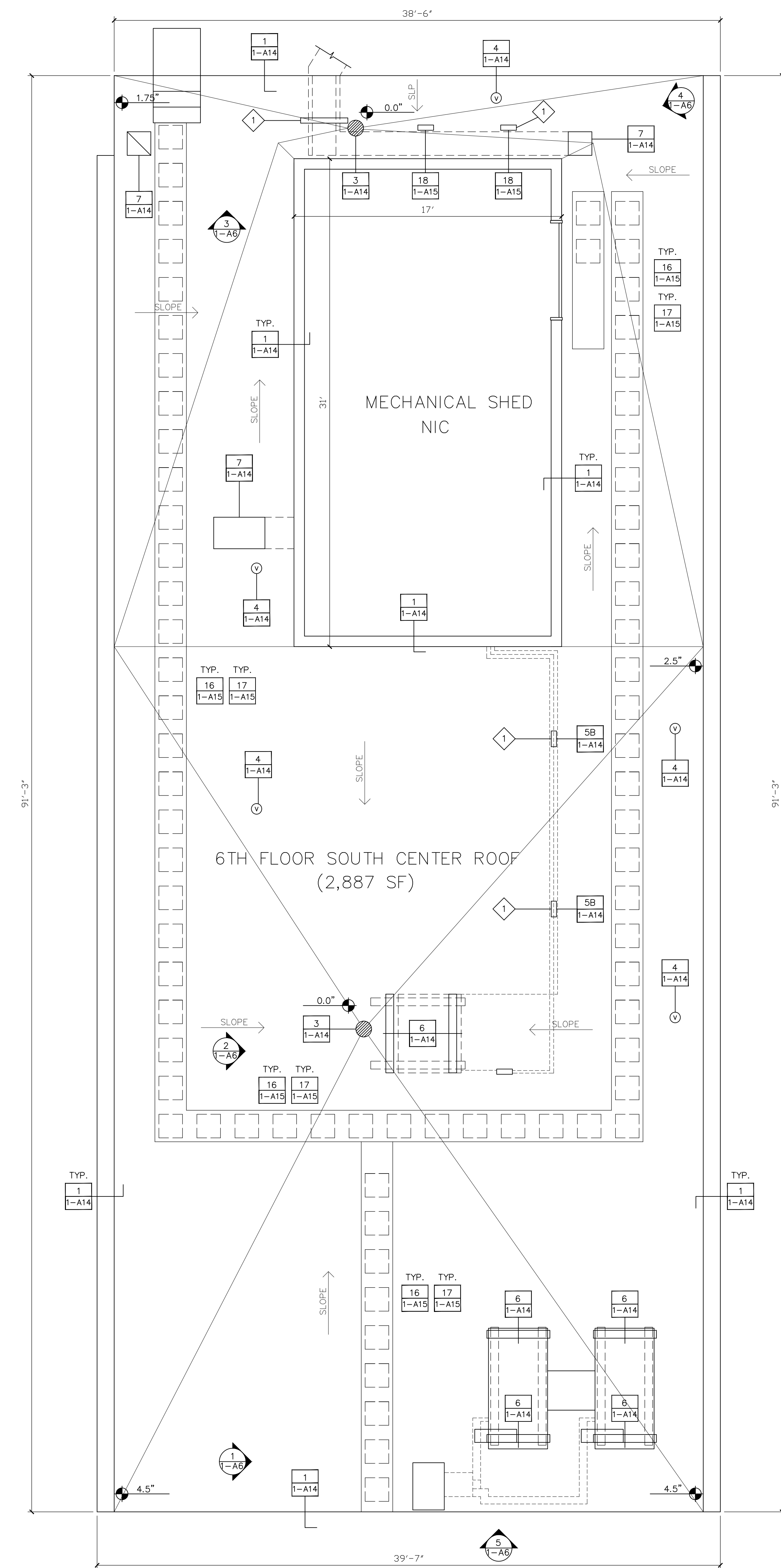


three inches = one foot
one and one half inches = one foot
one inch = one foot
three quarters inch = one foot
one half inch = one foot
three eighths inch = one foot
one quarter inch = one foot
one eighth inch = one foot



- SYMBOL LEGEND**
- ROOF PENETRATION
 - ROOF BLOCKING
 - MECHANICAL EQUIPMENT
 - ROUND ROOF PENETRATION
 - ROOF VENT
 - ROOF DRAIN
 - SCUPPER
 - ROOF HATCH
 - ROOF LADDER
 - ROOF TIE-OFF

GENERAL NOTES:

CONTRACTOR IS TO ENSURE THAT ALL PERSONNEL WORKING ON THIS PROJECT ARE PROTECTED VIA FALL PROTECTION EQUIPMENT AND PROCEDURES IN ACCORDANCE WITH OSHA SAFETY STANDARDS.

ALL DIMENSIONS, INSULATION THICKNESSES AND ROOF SLOPES TO BE FIELD VERIFIED.

REMOVE ALL CONCRETE WALK PADS.

REMOVE EXISTING SINGLE-PLY ROOF SYSTEM TO SUBSTRATE.

DOCUMENT LOCATION, MARK, REMOVE AND STORE THE EXISTING CATHODIC PROTECTION SYSTEM. PROVIDE NEW CABLING AND ROOF ATTACHMENTS, AND REINSTALL AFTER INSTALLATION OF NEW ROOF ASSEMBLY PER DETAILS SET FORTH ON DRAWING 1-A16. REMOVAL AND REINSTALLATION WORK BY A UL-CERTIFIED CONTRACTOR AND VA LIGHTNING PROTECTION SPECS.

REMOVE EXISTING BASE FLASHING FROM ROOF PERIMETER AND AROUND ALL ROOF PENETRATIONS.

REMOVE AND DISPOSE OF ALL DEMOLITION DEBRIS MATERIAL OFF-SITE PER VAMC SPECS. REF. SPECIFICATION SECTION 01 74 19.

INSTALL NEW BASE FLASHING AND COUNTER FLASHING AS SHOWN ON ROOF PENETRATION AND PERIMETER WALL DETAILS ON 1-A14 AND 1-A15.

INSTALL NEW MODIFIED BITUMEN ROOFING ON ALL ROOF SURFACES THIS SHEET. NEW INSULATION THICKNESS TO AVERAGE R-33 VALUE FOR WHOLE ROOF. REF. SPECIFICATION SECTION 07 22 00-2. SLOPE ROOF SURFACE TO DRAINS TO ENSURE POSITIVE DRAINAGE.

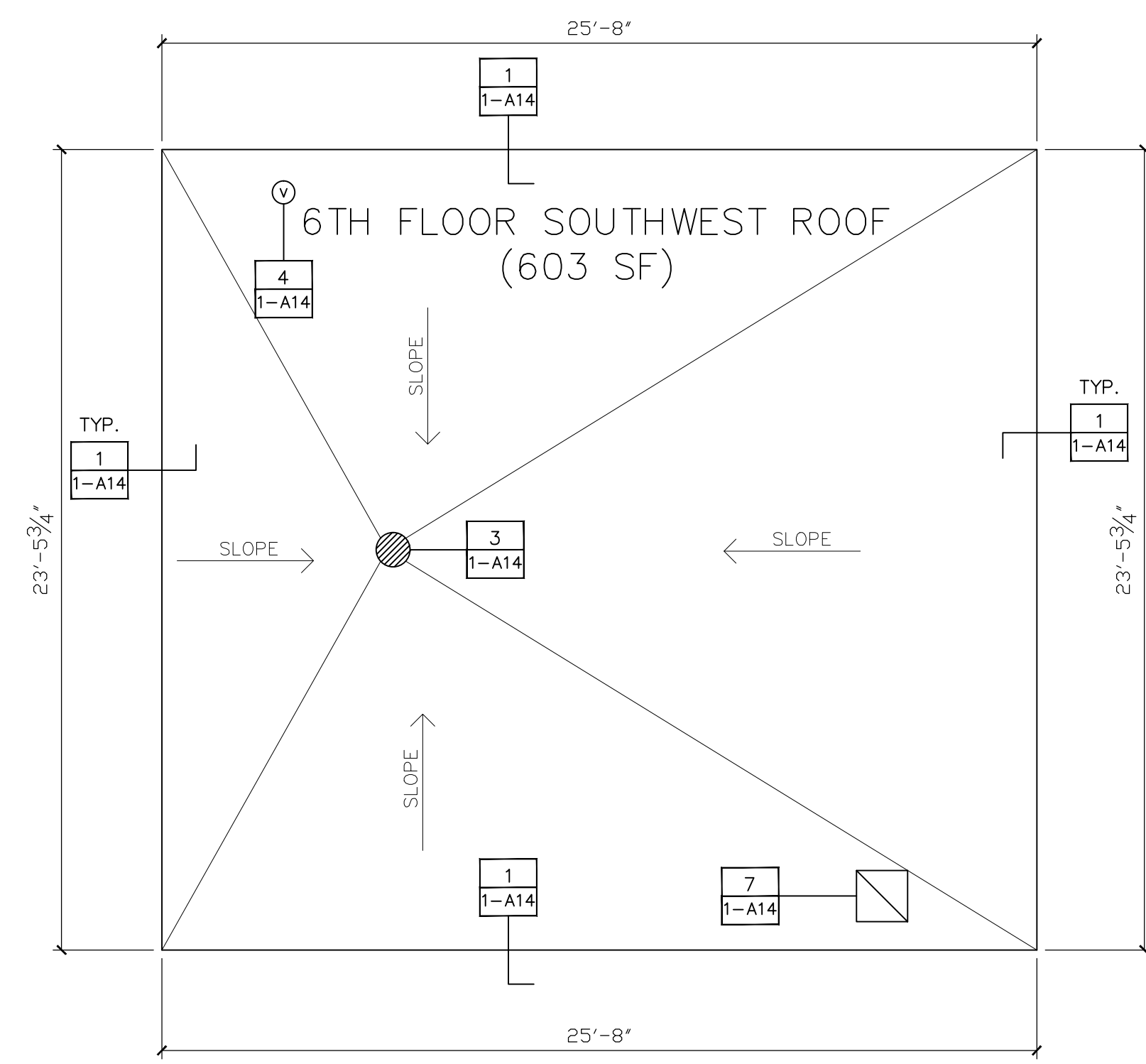
INSTALL COUNTER FLASHING AND SEALANTS AS DETAILED ON 1-A14.

ALL EXISTING WALKWAYS TO BE REMOVED AND REPLACE WITH NEW METAL WALKWAYS SIMILAR TO EXISTING ON 10TH FLOOR ROOF EAST SIDE. SUPPORT PVC SQUARE PIPE INSTALLED @ 4'-0" OC. SEE DETAILS 16 AND 17 ON 1-A15.

REMOVE DEBRIS, EQUIPMENT AND EXTRA MATERIAL UPON COMPLETION OF WORK, LEAVING ALL SURFACES IN A CLEAN CONDITION.

KEYED NOTES:

REMOVE EXISTING WOOD ROOF PAD FOR DUCTWORK SUPPORT LEG AND PROVIDE NEW ROOF SUPPORT PER DETAILS. FIELD CUT EXISTING SUPPORT LEG AND WELD NEW MOUNTING FLANGE TO BOTTOM FOR ATTACHMENT TO NEW RAIL. TEMPORARILY SUPPORT DUCTWORK DURING CONSTRUCTION.



SIXTH FLOOR SOUTH CENTER, SOUTHWEST ROOFS

SCALE: 1/4"=1'-0"

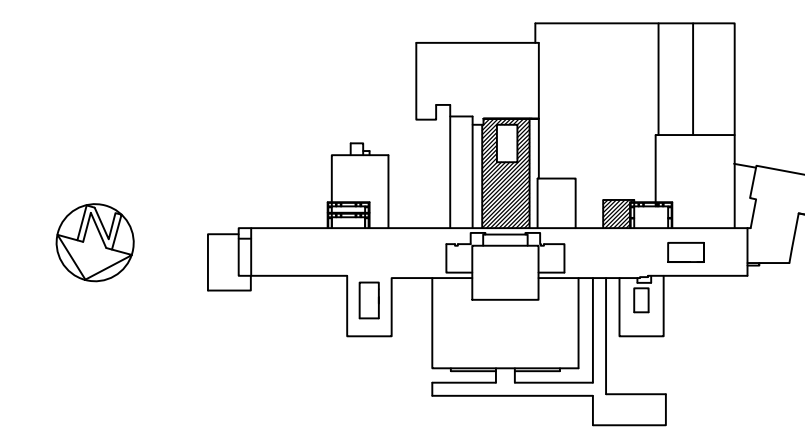


PHOTO # 1

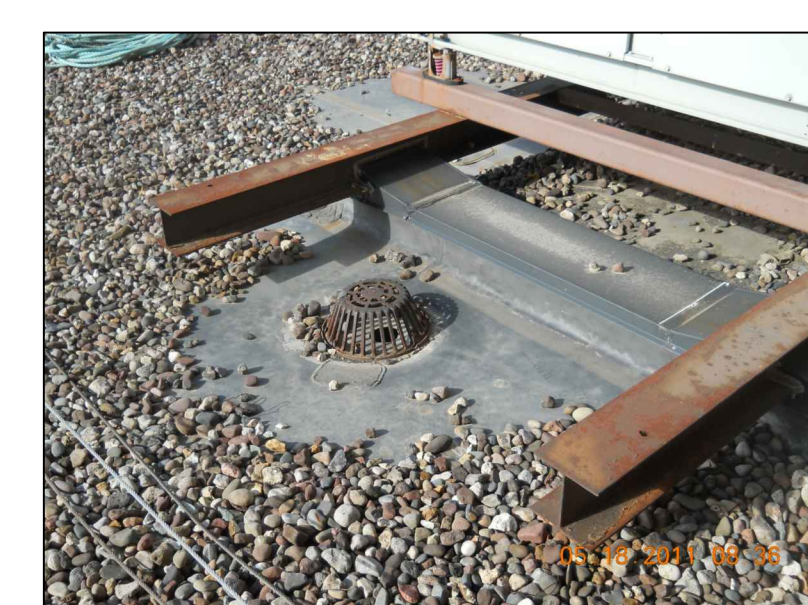


PHOTO # 2



PHOTO # 3



PHOTO # 4

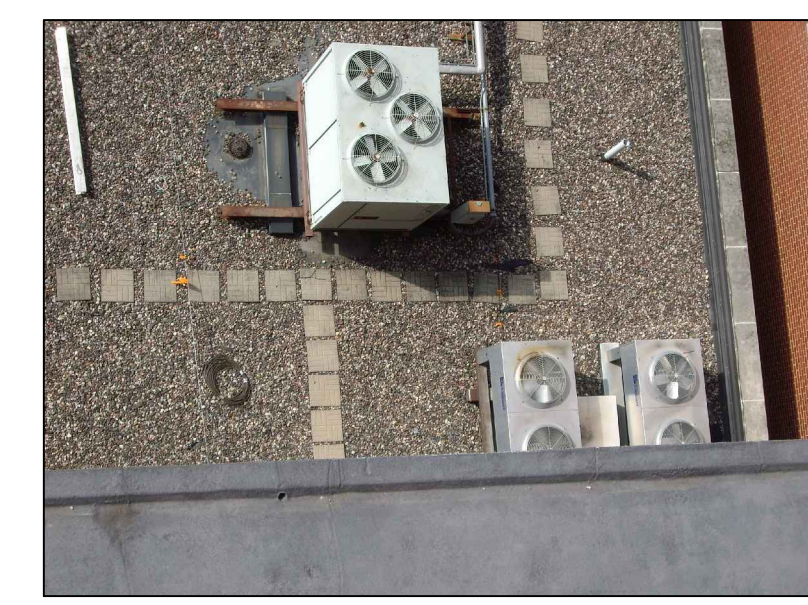

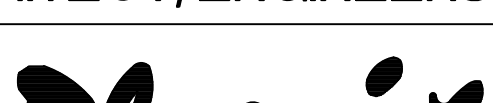


PHOTO # 5

		CONSULTANTS:				ARCHITECT/ENGINEERS:		Drawing Title		Project Title		Project Number		<div>Office of Construction and Facilities Management</div> <div> Department of Veterans Affairs</div>	
		Roofing Consultant: Robert L. Dye, LC PO BOX 4581 Overland Park, Kansas, 66204		Industrial Hygiene Consultant: John A. Jurgiel + Associates, Inc. 1810 Craig Road, Suite 207 St. Louis, Missouri 63146		 1401 Indian Pipe Lane, Wildwood, MO. 63038 Phone (314) 401-4078 phoenixdzn@yahoo.com		SIXTH FLOOR SOUTH CENTER + SOUTHWEST ROOF PLANS		REPLACE MAJOR ROOFS BUILDING # 1		636A8-11-004			
								Approved Project Director		Location IOWA CITY VAMC, IOWA		Building Number BLDG # 1			
Revisions:		Date								Date 03-13-2012		Checked RWT		Drawing Number 1-A6 Dwg. 7 of 18	