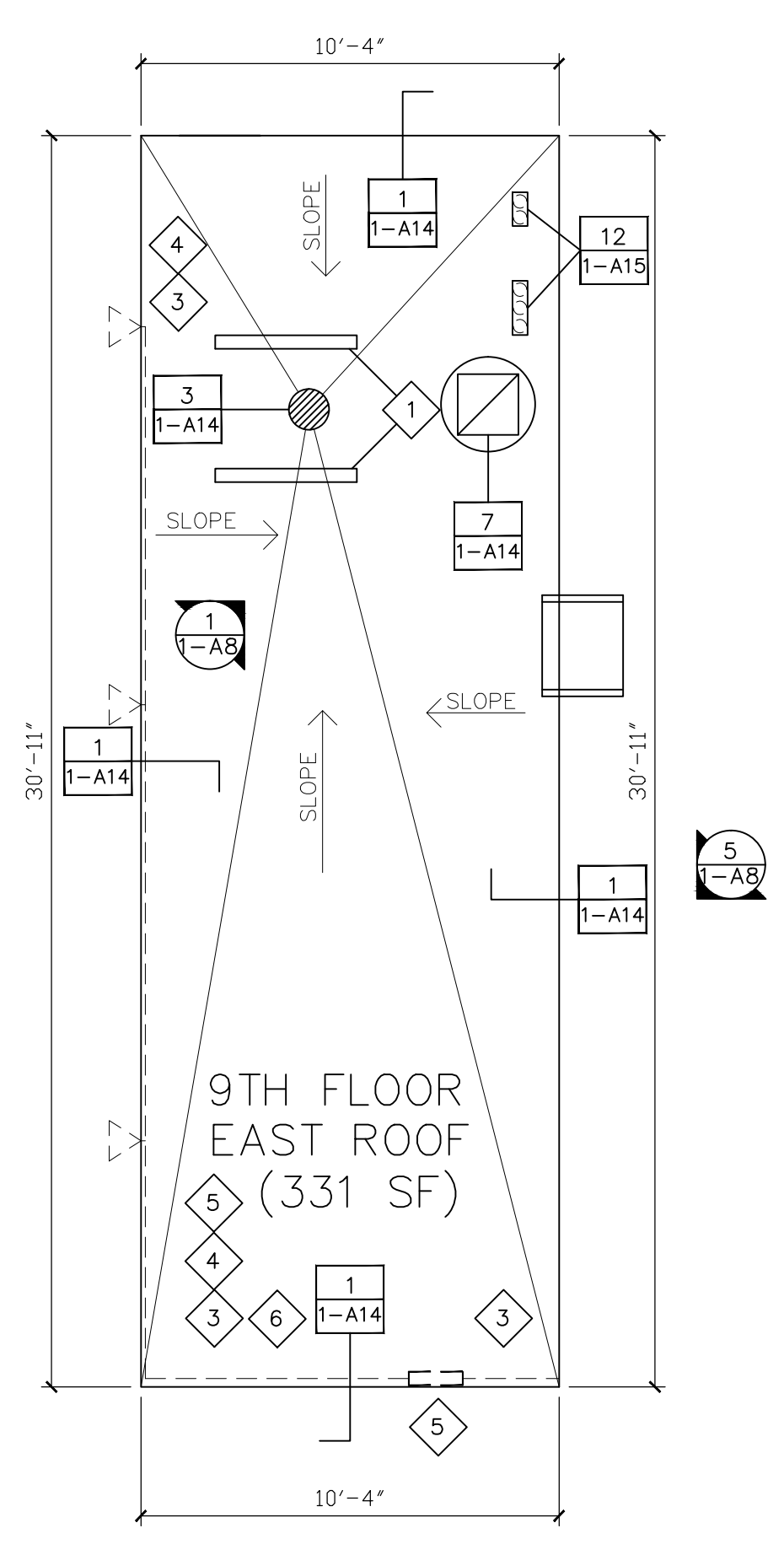
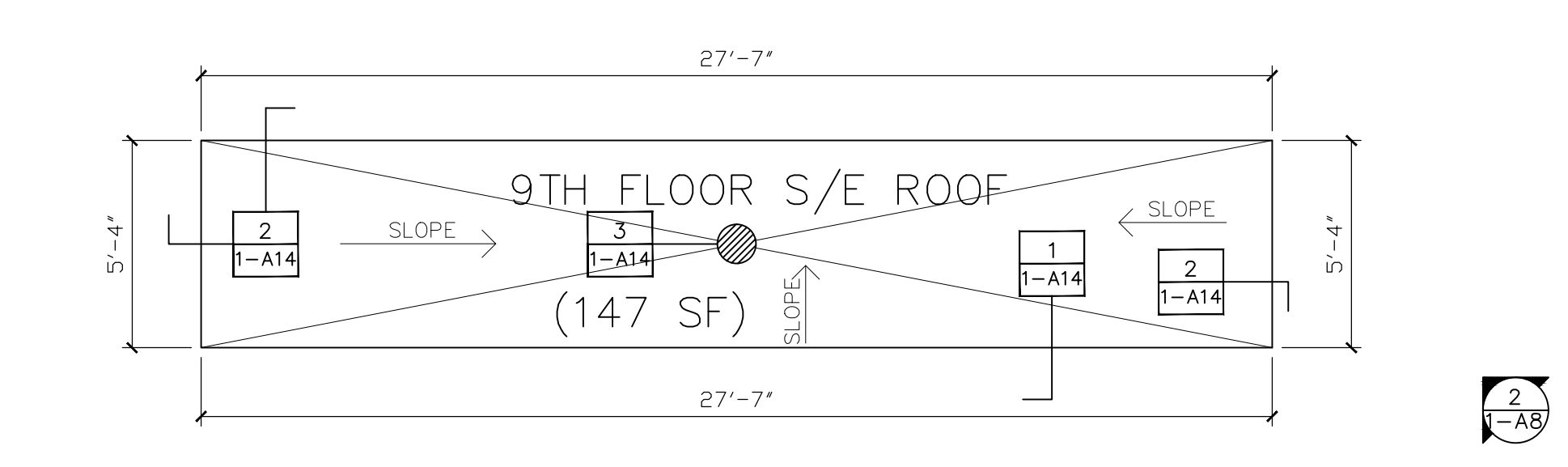


three inches = one foot  
one and one half inches = one foot  
one inch = one foot  
three quarters inch = one foot  
one half inch = one foot  
three eighths inch = one foot  
one quarter inch = one foot  
one eighth inch = one foot



- SYMBOL LEGEND**
- ROOF PENETRATION
  - ROOF BLOCKING
  - MECHANICAL EQUIPMENT
  - ROUND ROOF PENETRATION
  - ROOF VENT
  - ROOF DRAIN
  - SCUPPER
  - ROOF HATCH
  - ROOF LADDER
  - ROOF TIE-OFF
  - CELL PHONE ANTENNA

**9TH FLOOR ROOFS**  
SCALE: 1/4"=1'-0"

**GENERAL NOTES:**

CONTRACTOR IS TO ENSURE THAT ALL PERSONNEL WORKING ON THIS PROJECT ARE PROTECTED VIA FALL PROTECTION EQUIPMENT AND PROCEDURES IN ACCORDANCE WITH OSHA SAFETY STANDARDS.

ALL DIMENSIONS, INSULATION THICKNESSES AND ROOF SLOPES TO BE FIELD VERIFIED.

REMOVE ALL WOOD WALKWAY SYSTEM ON 9TH FLOOR NORTH ROOF.

REMOVE EXISTING SINGLE-PLY ROOF SYSTEM ON 9TH FLOOR SOUTH AND 9TH FLOOR SOUTHEAST ROOF AREAS TO SUBSTRATE. CONTRACTOR IS TO EMPLOY METHODS FOR REMOVAL OF ROOF MATERIAL INDICATED IN SHADED AREAS NOTED ON DRAWING 1-A11 PER PROCEDURES SET FORTH ON THAT DRAWING.

REMOVE EXISTING BUILT-UP ROOF SYSTEM TO SUBSTRATE ON 9TH FLOOR EAST AND 9TH FLOOR NORTH ROOF AREAS. REMOVE EXISTING VAPOR BARRIER TO CONCRETE DECK. CONTRACTOR IS TO EMPLOY METHODS FOR REMOVAL OF ROOF MATERIAL INDICATED IN SHADED AREAS NOTED ON DRAWING 1-A11 PER PROCEDURES SET FORTH ON THAT DRAWING.

DOCUMENT LOCATION, MARK, REMOVE AND STORE THE EXISTING CATHODIC PROTECTION SYSTEM. PROVIDE NEW CABLING AND ROOF ATTACHMENTS, AND REINSTALL AFTER INSTALLATION OF NEW ROOF ASSEMBLY PER DETAILS SET FORTH ON DRAWING 1-A16. REMOVAL AND REINSTALLATION WORK BY A UL-CERTIFIED CONTRACTOR AND VA LIGHTNING PROTECTION SPECS.

REMOVE EXISTING BASE FLASHING FROM ROOF PERIMETER AND AROUND ALL ROOF PENETRATIONS.

REMOVE EXISTING ROOFTOP MECHANICAL EQUIPMENT AND PIPING SUPPORTS ON 9TH FLOOR NORTH ROOF, BRACKETING SUPPORT SYSTEMS WITH TEMPORARY SUPPORTS TO ALLOW ROOF SYSTEM WORK AT THAT LOCATION TO PROCEED. INSTALL NEW SUPPORTS AS INDICATED IN THE DETAILS 5 AND 8 ON 1-A14 AND 18 ON 1-A15.

REMOVE AND DISPOSE OF ALL DEMOLITION DEBRIS MATERIAL OFF-SITE PER VAMC GUIDELINES. REF. TO SPECIFICATION SECTION 01 74 19.

INSTALL NEW BASE FLASHING AND COUNTER FLASHING AS SHOWN ON ROOF PENETRATION AND PERIMETER WALL DETAILS ON 1-A14 AND 1-A15.

INSTALL NEW MODIFIED BITUMEN ROOFING ON ALL ROOF SURFACES THIS SHEET. NEW INSULATION THICKNESS TO AVERAGE R-33 VALUE FOR THE WHOLE ROOF. REF. SPECIFICATION SECTION 07 22 00-2. SLOPE ROOF SURFACE TO DRAINS TO ENSURE POSITIVE DRAINAGE.

INSTALL COUNTER FLASHING AND SEALANTS AS DETAILED ON 1-A14.

INSTALL NEW ROOF DRAIN STRAINER COVERS.

EXISTING WALKWAY TO BE REMOVED AND REPLACED WITH NEW METAL WALKWAYS SIMILAR TO EXISTING ON 10TH FLOOR ROOF EAST SIDE. SUPPORT PVC SQUARE PIPE INSTALLED 4'-0" OC. SEE DETAILS 16 AND 17 ON 1-A15.

REF. TO 1-A11 FOR ASBESTOS AND LEAD MATERIALS.

REMOVE DEBRIS, EQUIPMENT AND EXTRA MATERIAL UPON COMPLETION OF WORK, LEAVING ALL SURFACES IN A CLEAN CONDITION.

- KEYED NOTES:**
- 1 REMOVE OBSOLETE WOOD SLEEPERS ON 9TH FLOOR EAST AND 9TH FLOOR NORTH ROOFS.
  - 2 INSTALL NEW SCUPPER PARAPET WALL PENETRATION FLASHING AS DETAILED ON 9TH FLOOR NORTH ROOF.
  - 3 COORDINATE WITH CELL PHONE SERVICES PROVIDERS FOR PROTECTION AND/OR TEMPORARY REMOVAL OF EXISTING SERVICE PROVIDER EQUIPMENT DURING CONSTRUCTION.
  - 4 EXISTING CELL PHONE SERVICE PROVIDER CABLES MOUNTED TO SIDES AND TOP OF CONCRETE PARAPET WALL.
  - 5 EXISTING CELL PHONE SERVICE PROVIDER GROUNDING BUS-MOUNTED TO SIDE OF CONCRETE PARAPET WALL.
  - 6 REMOVE EXISTING CONDUIT SUPPORTS ATTACHED TO EXISTING FLASHING. RE-SUPPORT AFTER COMPLETION OF ROOF CONSTRUCTION WORK.
  - 7 REMOVE EXISTING WOOD ROOF PAD FOR DUCTWORK SUPPORT LEG AND PROVIDE NEW ROOF SUPPORT PER DETAILS. FIELD CUT EXISTING SUPPORT LEG AND WELD NEW MOUNTING FLANGE TO BOTTOM FOR ATTACHMENT TO NEW SUPPORT. TEMPORARILY SUPPORT DUCTWORK DURING CONSTRUCTION. SEE DETAIL 18 ON 1-A15.

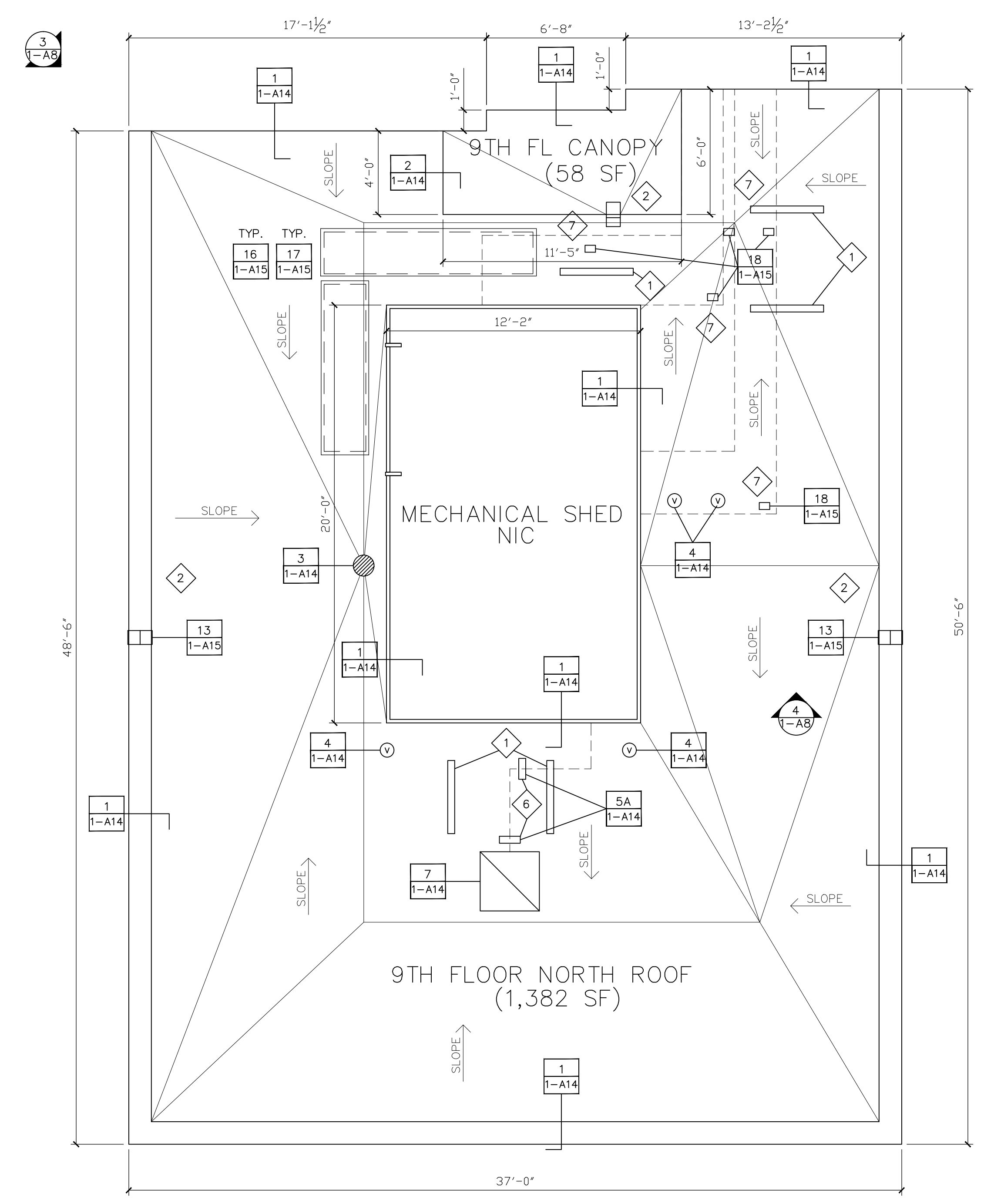
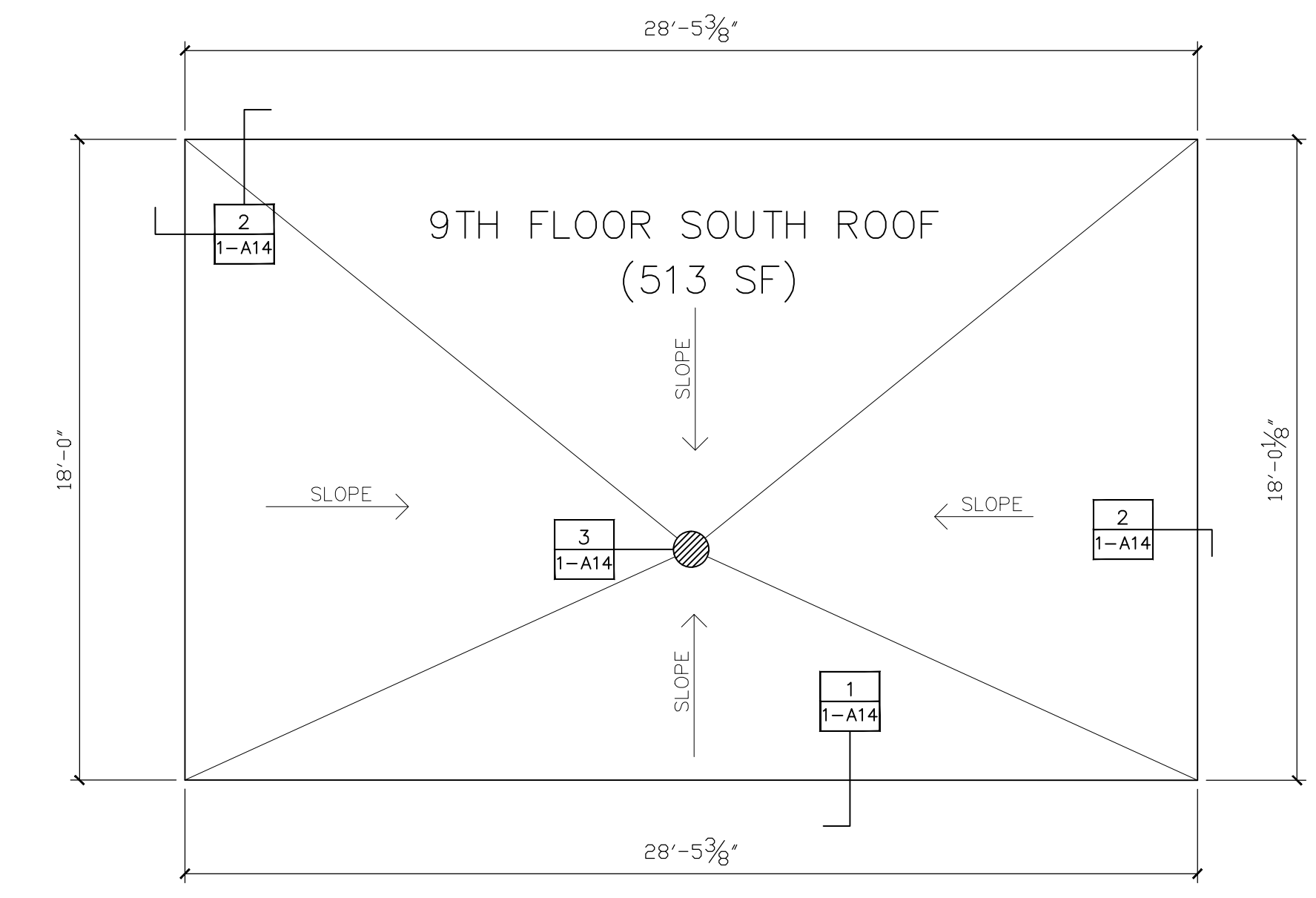


PHOTO # 1



PHOTO # 2



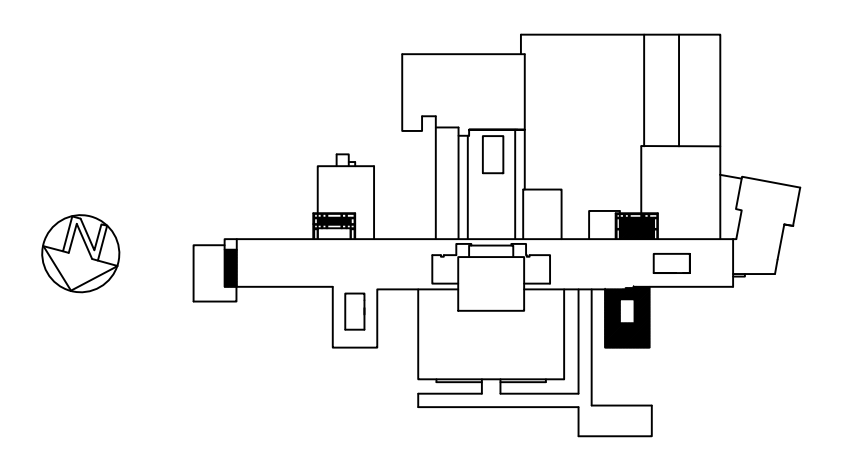
PHOTO # 3



PHOTO # 4



PHOTO # 5



<b>CONSULTANTS:</b>		<b>ARCHITECT/ENGINEERS:</b>		<b>Drawing Title</b>		<b>Project Title</b>		<b>Project Number</b>		<b>Office of Construction and Facilities Management</b> Department of Veterans Affairs	
Roofing Consultant: Robert L Dye, LC PO BOX 4581 Overland Park, Kansas, 66204		Industrial Hygiene Consultant: John A. Jurgiel + Associates, Inc. 1810 Craig Road, Suite 207 St. Louis, Missouri 63146		NINTH FLOOR SOUTH, SOUTHEAST, EAST + NORTH ROOF PLANS		REPLACE MAJOR ROOFS BUILDING # 1		636A8-11-004			
Date		Date		Approved Project Director		Location IOWA CITY VAMC, IOWA		Building Number BLDG # 1			
Revisions		Revisions		Date		Date 03-13-2012		Drawing Number 1-A8			
VA FORM 08-6231				1401 Indian Pipe Lane, Wildwood, MO. 63038 Phone (314) 401-4078 phoenixdzn@yahoo.com				Checked RWT			
								Drawn REC		Dwg. 9 of 18	