

three inches = one foot
one and one half inches = one foot
one inch = one foot
three quarters inch = one foot
one half inch = one foot
three eighths inch = one foot
one quarter inch = one foot
one eighth inch = one foot

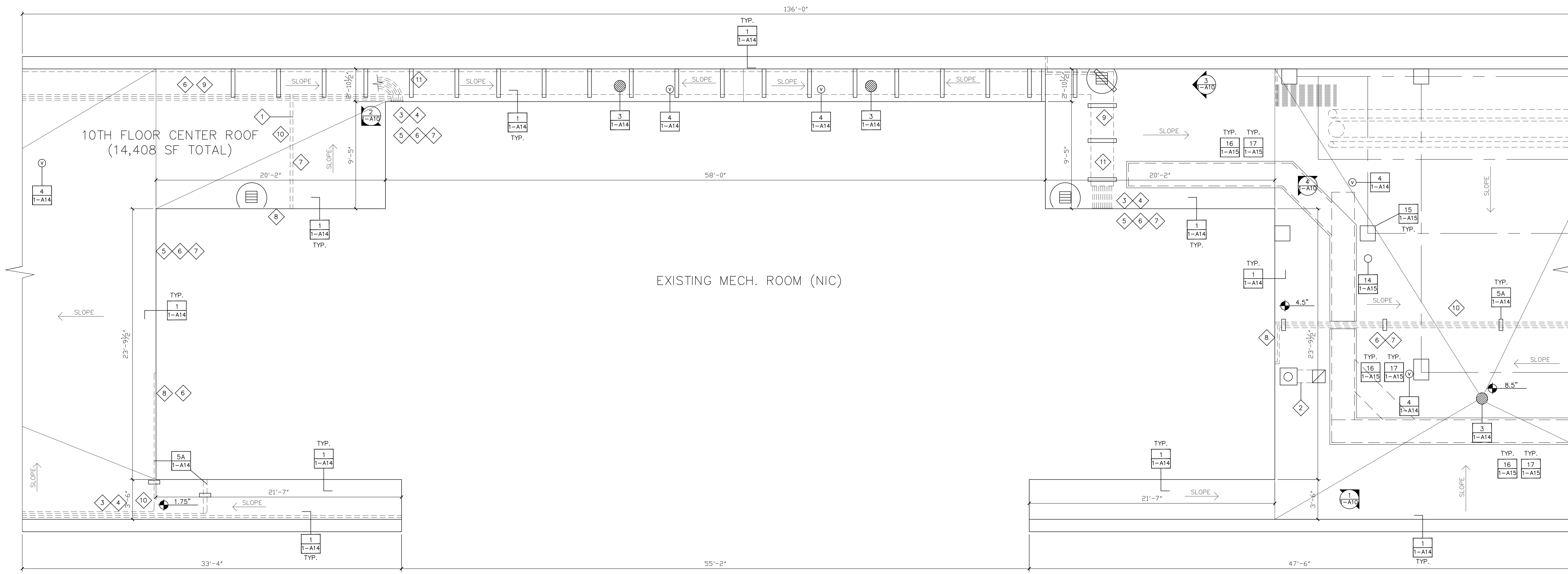


PHOTO # 1



PHOTO # 2

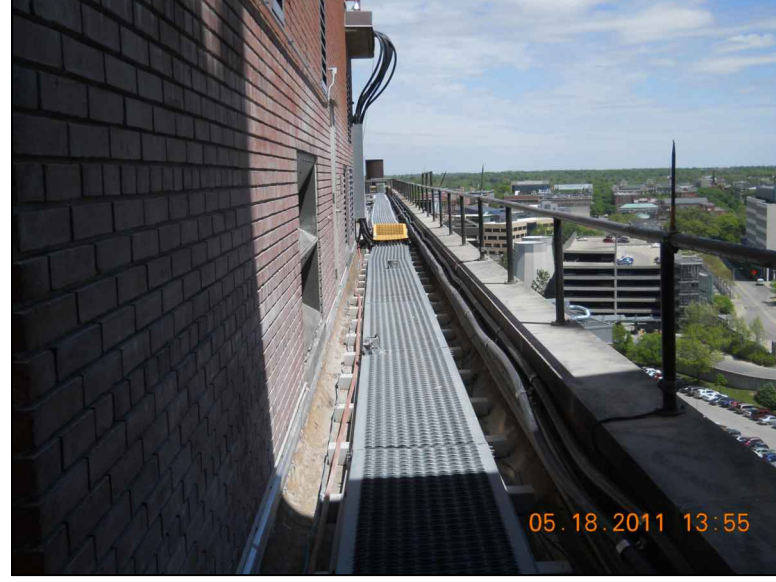


PHOTO # 3



PHOTO # 4

KEYED NOTES:

- 1 DISCONNECT AND TEMPORARILY RELOCATE CONDUIT RUNS CURRENTLY ON THE ROOF SURFACE. COORDINATE RECONFIGURATION AND SUPPORTED REINSTALLATION PER DETAIL 5 ON 1-A14, AND WITH VAMC PERSONNEL.
- 2 REMOVE OBSOLETE MECHANICAL EQUIPMENT. PATCH HOLES IN DECK AS DETAILED ON 11 ON 1-A15.
- 3 COORDINATE WITH CELL PHONE SERVICES PROVIDER FOR PROTECTION AND/OR TEMPORARY REMOVAL OF EXISTING SERVICE PROVIDER EQUIPMENT DURING CONSTRUCTION.
- 4 EXISTING CELL PHONE SERVICE PROVIDER CABLES MOUNTED TO SIDES AND TOP OF CONCRETE PARAPET WALL.
- 5 PROTECT THE EXISTING CONDUITS INDICATED DURING CONSTRUCTION THAT ARE MOUNTED TO THE SIDE OF THE BRICK PARAPET WALL.
- 6 TEMPORARILY SUPPORT THE EXISTING CONDUIT(S) INDICATED DURING CONSTRUCTION. ALL ELECTRICAL WORK DONE BY LICENSE ELECTRICIAN.
- 7 INSTALL ROOF CONDUIT SUPPORTS AFTER COMPLETION OF ROOF CONSTRUCTION WORK.
- 8 REMOVE EXISTING CONDUIT SUPPORTS ATTACHED TO EXISTING FLASHING. RE-SUPPORT AFTER COMPLETION OF ROOF CONSTRUCTION WORK.
- 9 EXISTING CELL PHONE SERVICE PROVIDER CABLETRAY/WALKWAY FOR PROTECTION OF CABLES.
- 10 PROVIDE NEW ROOF CONDUIT SUPPORT PER DETAIL 5 ON 1-A14.
- 11 EXISTING CONDUITS ARE SUPPORTED FROM CELL PHONE SERVICE PROVIDER CABLETRAY/WALKWAY.

GENERAL NOTES:

CONTRACTOR IS TO ENSURE THAT ALL PERSONNEL WORKING ON THIS PROJECT ARE PROTECTED VIA FALL PROTECTION EQUIPMENT AND PROCEDURES IN ACCORDANCE WITH OSHA SAFETY STANDARDS.

ALL DIMENSIONS, INSULATION THICKNESSES AND ROOF SLOPES TO BE FIELD VERIFIED.

REMOVE ALL WOOD AND METAL WALKWAY SYSTEMS.

REMOVE EXISTING ROOFTOP MECHANICAL EQUIPMENT POWER AND PIPING SUPPORTS, BRACKETING SUPPORT SYSTEMS WITH TEMPORARY SUPPORTS TO ALLOW ROOF SYSTEM WORK AT THAT LOCATION TO PROCEED. INSTALL NEW SUPPORTS AS INDICATED IN THE DETAILS 5 AND 8 ON 1-A14.

REMOVE EXISTING BUILT-UP ROOF SYSTEM TO SUBSTRATE. REMOVE EXISTING VAPOR BARRIER ADHERED TO CONCRETE DECK. CONTRACTOR IS TO EMPLOY METHODS FOR REMOVAL OF ROOF MATERIAL INDICATED IN SHADED AREAS NOTED ON DRAWING 1-A11 PER PROCEDURES SET FORTH ON THAT DRAWING.

DOCUMENT LOCATION, MARK, REMOVE AND STORE THE EXISTING CATHODIC PROTECTION SYSTEM. PROVIDE NEW CABLEING AND ROOF ATTACHMENTS, AND REINSTALL AFTER INSTALLATION OF NEW ROOF ASSEMBLY PER DETAILS SET FORTH ON DRAWING 1-A16. REMOVAL AND REINSTALLATION WORK BY A UL-CERTIFIED CONTRACTOR AND VA LIGHTNING PROTECTION SPECS.

REMOVE EXISTING BASE FLASHING FROM ROOF PERIMETER AND AROUND ALL ROOF PENETRATIONS.

REMOVE AND DISPOSE OF ALL DEMOLITION DEBRIS MATERIAL OFF-SITE PER VAMC GUIDELINES. REF. TO SPECIFICATION SECTION 01 74 19.

INSTALL NEW MODIFIED BITUMEN ROOFING ON ALL ROOF SURFACES THIS SHEET. NEW INSULATION THICKNESS TO AVERAGE R-33 VALUE FOR WHOLE ROOF. REF. SPECIFICATION SECTION 07 22 00-2. SLOPE ROOF SURFACE TO DRAINS TO ENSURE POSITIVE DRAINAGE.

INSTALL NEW BASE FLASHING AND COUNTER FLASHING AS SHOWN ON ROOF PENETRATION AND PERIMETER WALL DETAILS ON 1-A14 AND 1-A15.

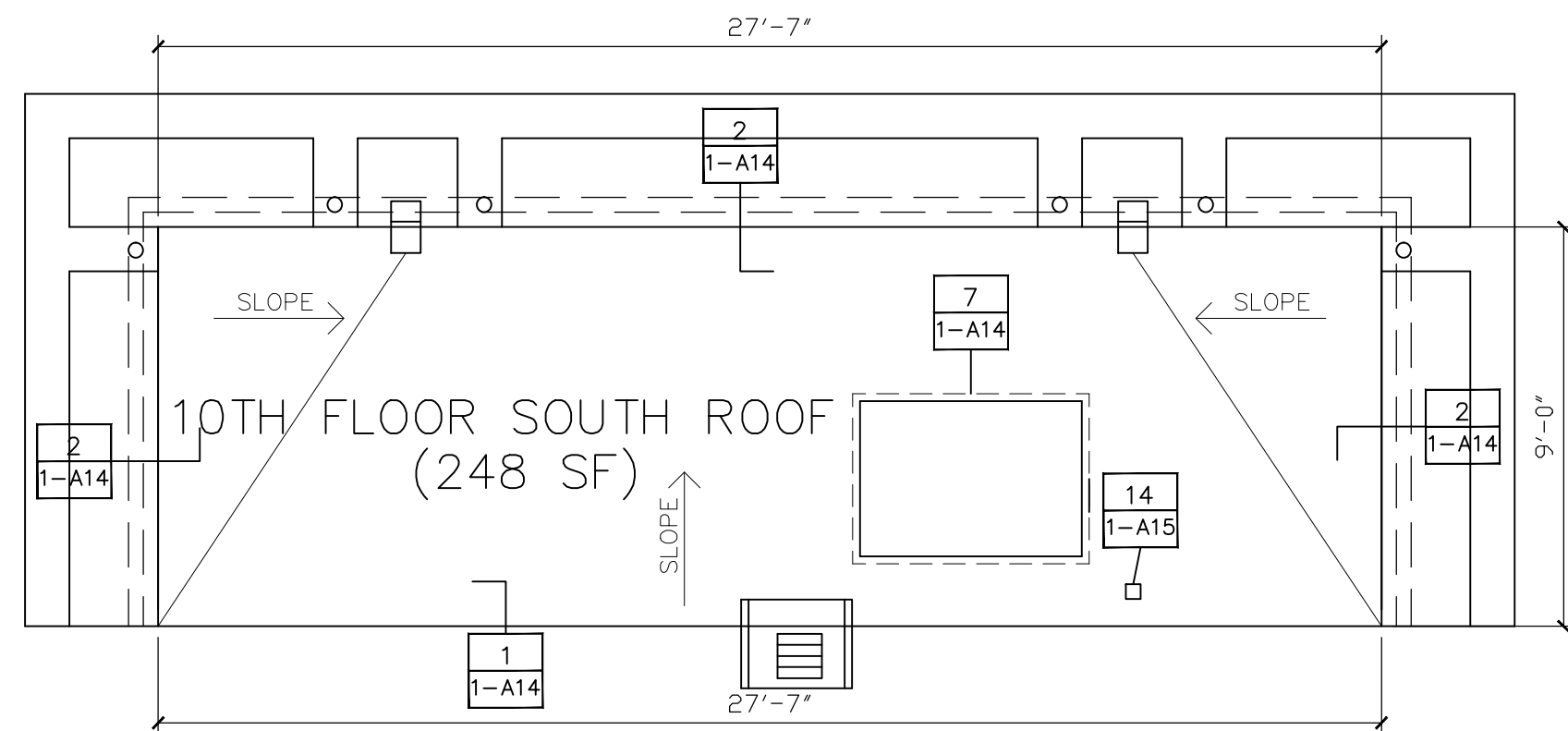
INSTALL COUNTER FLASHING AND SEALANTS AS DETAILED ON 1-A14.

INSTALL NEW ROOF DRAIN STRAINER COVERS.

EXISTING WALKWAYS TO BE REMOVED AND REPLACED WITH NEW METAL WALKWAYS SIMILAR TO EXISTING 10TH FLOOR ROOF EAST SIDE. SUPPORT PVC SQUARE PIPE INSTALLED @ 4'-0" OC. SEE DETAILS 16 AND 17 ON 1-A15.

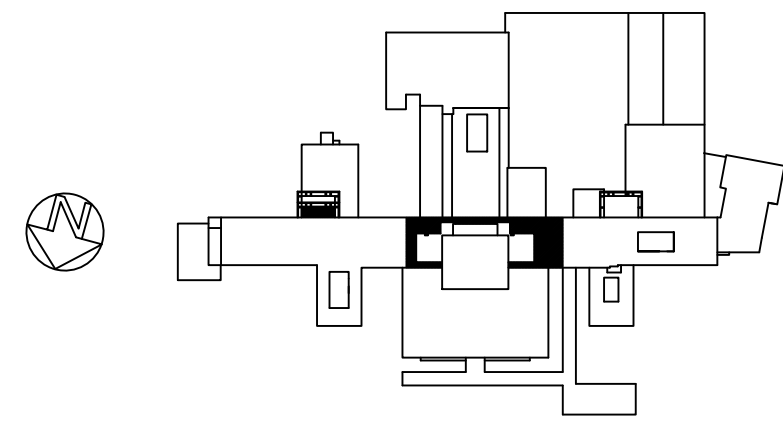
REMOVE DEBRIS, EQUIPMENT AND EXTRA MATERIAL UPON COMPLETION OF WORK, LEAVING ALL SURFACES IN A CLEAN CONDITION.

REF. TO 1-A11 FOR ASBESTOS AND LEAD MATERIALS.





SYMBOL LEGEND

- ROOF PENETRATION
- ROOF BLOCKING
- MECHANICAL EQUIPMENT
- ROUND ROOF PENETRATION
- ROOF VENT
- ROOF DRAIN
- SCUPPER
- ROOF HATCH
- ROOF LADDER
- ROOF TIE-OFF



TENTH FLOOR CENTER/SOUTH ROOF PLANS

SCALE: 1/4"=1'-0"

		CONSULTANTS:				ARCHITECT/ENGINEERS:		Drawing Title		Project Title		Project Number		Office of Construction and Facilities Management	
		Roofing Consultant: Robert L Dye, LC PO BOX 4581 Overland Park, Kansas, 66204		Industrial Hygiene Consultant: John A. Jurgiel + Associates, Inc. 1810 Craig Road, Suite 207 St. Louis, Missouri 63146		<div></div> <div>1401 Indian Pipe Lane, Wildwood, MO. 63038 Phone (314) 401-4078 phoenixdzn@yahoo.com</div>		TENTH FLOOR CENTER + SOUTH ROOF PLANS		REPLACE MAJOR ROOFS BUILDING #1		636A8-11-004			
						Approved Project Director		Location IOWA CITY VAMC, IOWA		Building Number BLDG #1					
Revisions:		Date						Date 03-13-2012		Checked RWT		Drawn REC			
														 Department of Veterans Affairs	