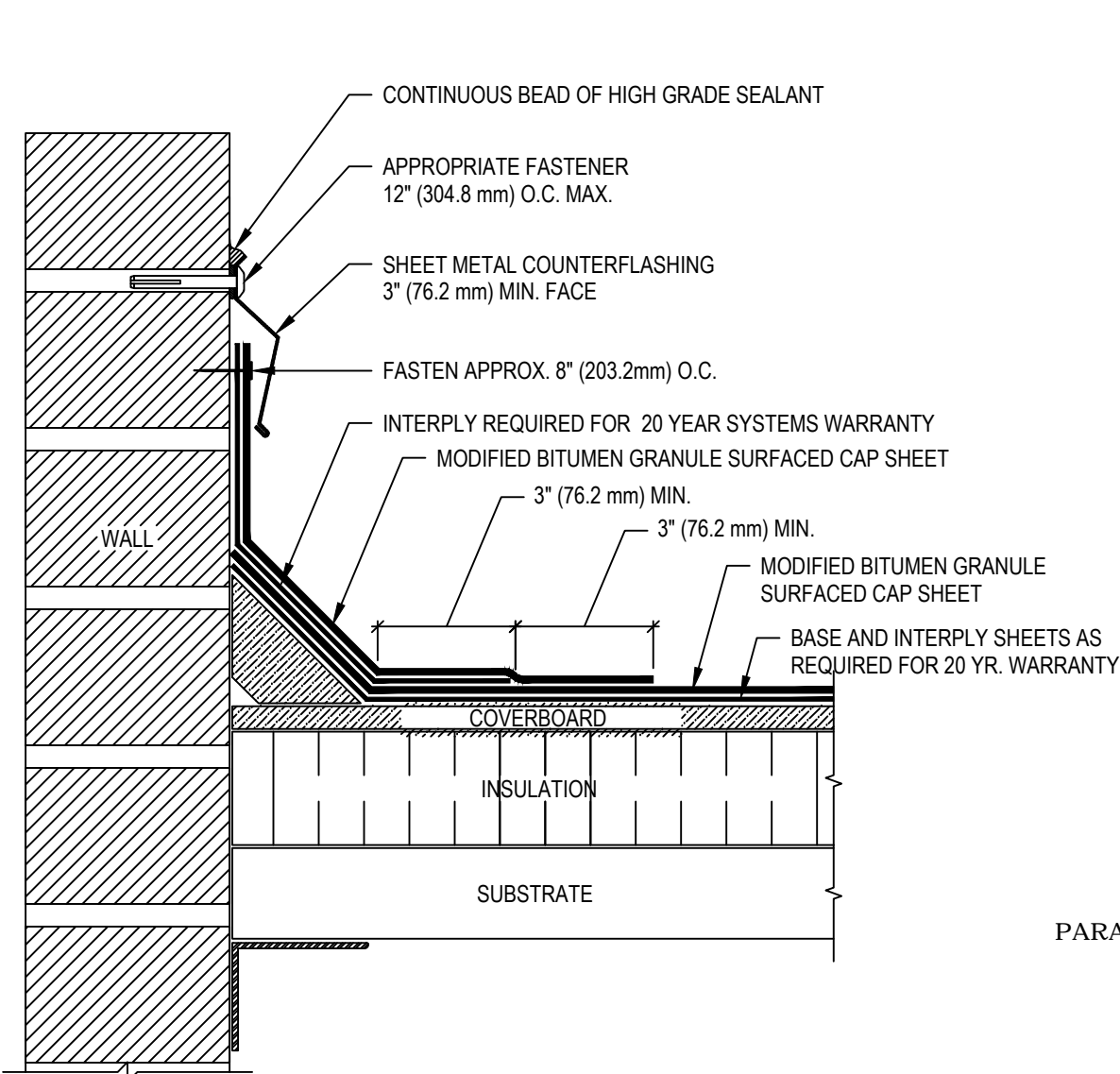


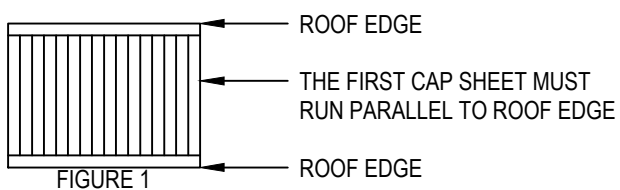
three inches = one foot
one and one half inches = one foot
one inch = one foot
three quarters inch = one foot
one half inch = one foot
three eighths inch = one foot
one quarter inch = one foot
one eighth inch = one foot



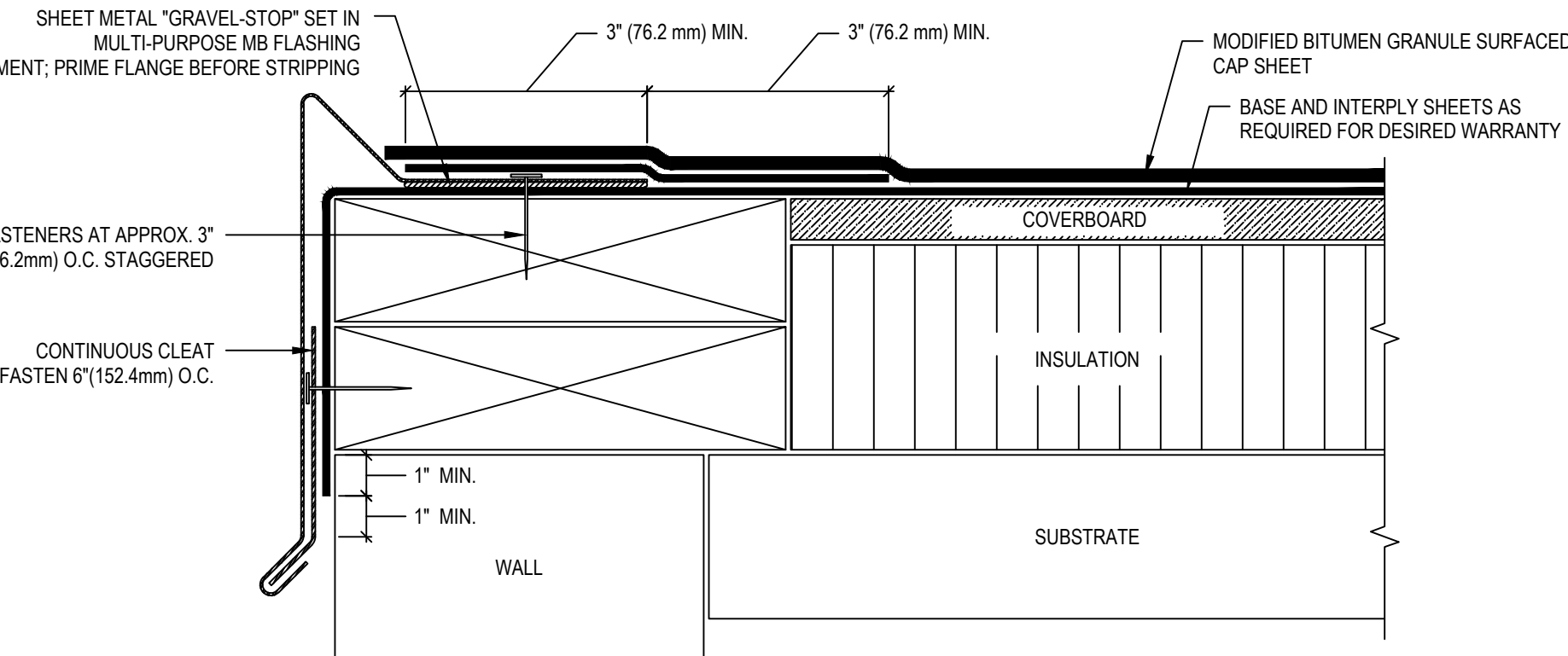
- NOTES:
1. THIS DETAIL SHOULD BE USED ONLY WHERE THE DECK IS SUPPORTED BY THE OUTSIDE WALL.
 2. ALL PLIES ARE TO BE FULLY ADHERED TO THE BASE SHEET.
 3. ALL SHEET METAL TO BE INSTALLED PER SMACNA GUIDELINES.
 4. GRANULES MUST BE EMBEDDED WHEN LAPPING TORCH APPLIED GRANULE SURFACED CAP SHEET.
 5. FLASHING LAPS MUST BE OFFSET FROM FIELD LAPS A MINIMUM OF 12" (304.8mm).
 6. IF FLASHING MUST EXTEND ABOVE 24" (609.6mm) IN HEIGHT, FLASHING SHEETS MUST BE INSTALLED PARALLEL TO PARAPET HEIGHT AND MUST BE ATTACHED AT THE TOP ON 8" (203.2mm) ON CENTERS.
 7. MAXIMUM PARAPET HEIGHT FOR THIS DETAIL IS 36" (915 mm).

PARAPET WITH NAILABLE SUBSTRATES MUST HAVE A BASE SHEET ATTACHED:
LAPS 9" (228.6mm) O.C.
TOPS 8" (203.2mm) O.C.
FIELD 1 PER 1 S.F. (11 SQ. M.)

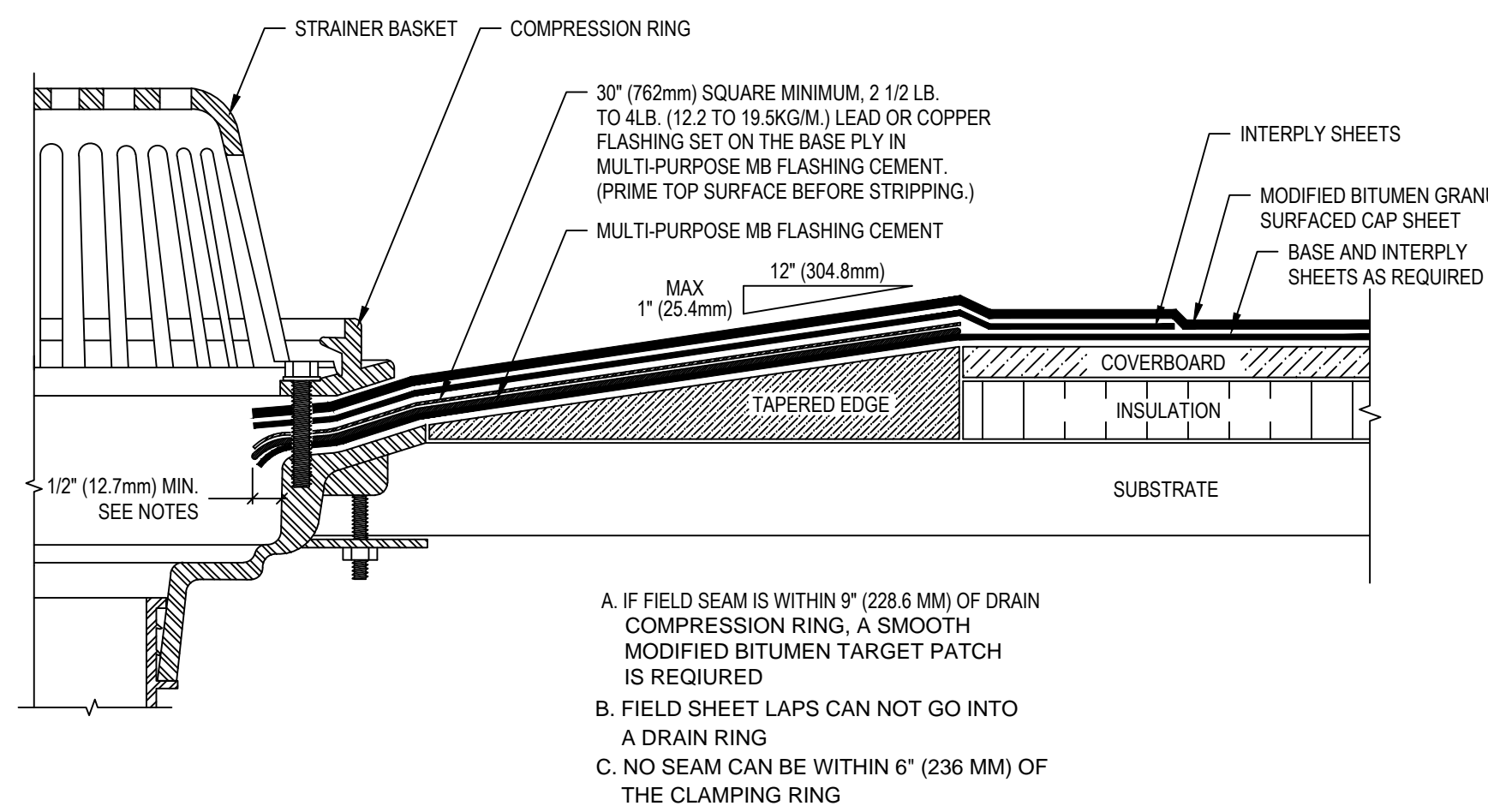
1 SURFACE MOUNTED COUNTER-FLASHING FOR CONCRETE WALL
NOT TO SCALE



- NOTES:
1. WD NAILER FIRE RATED-PRESSURE TREATED INSTALLED TO MEET APPLICABLE BUILDING CODES OR 200 LBS PER LINEAR FOOT MINIMUM IN ANY GIVEN DIRECTION.
 2. ATTACH WOOD NAILERS WITH SUITABLE FASTENERS.
 3. THIS DETAIL SHOULD BE USED ONLY WHERE THE DECK IS SUPPORTED BY THE OUTSIDE WALL.
 4. ALL SHEET METAL IS TO BE INSTALLED PER SMACNA GUIDELINES.



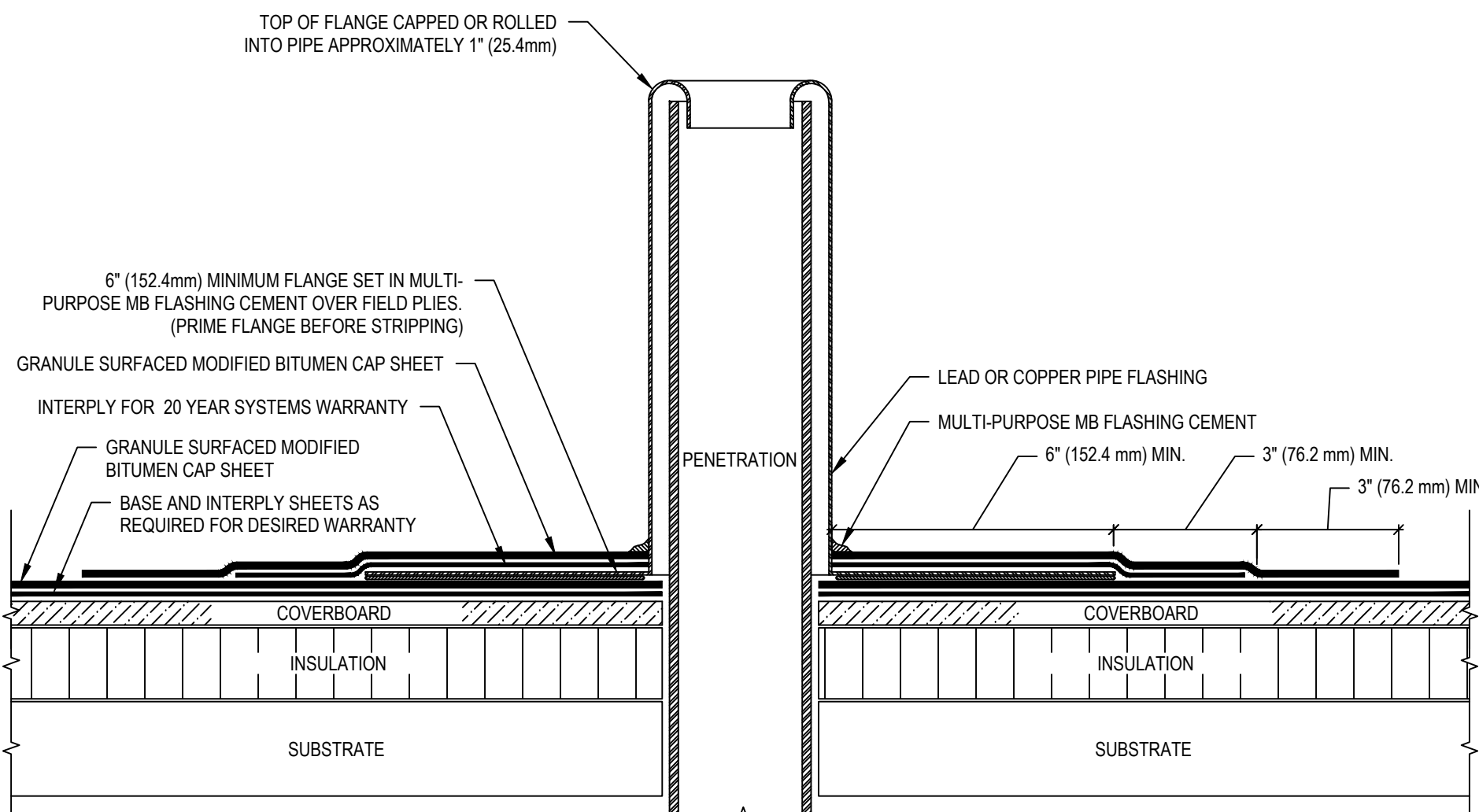
2 GRAVEL-STOP EDGE USING FIELD SHEET FLASHING
NOT TO SCALE



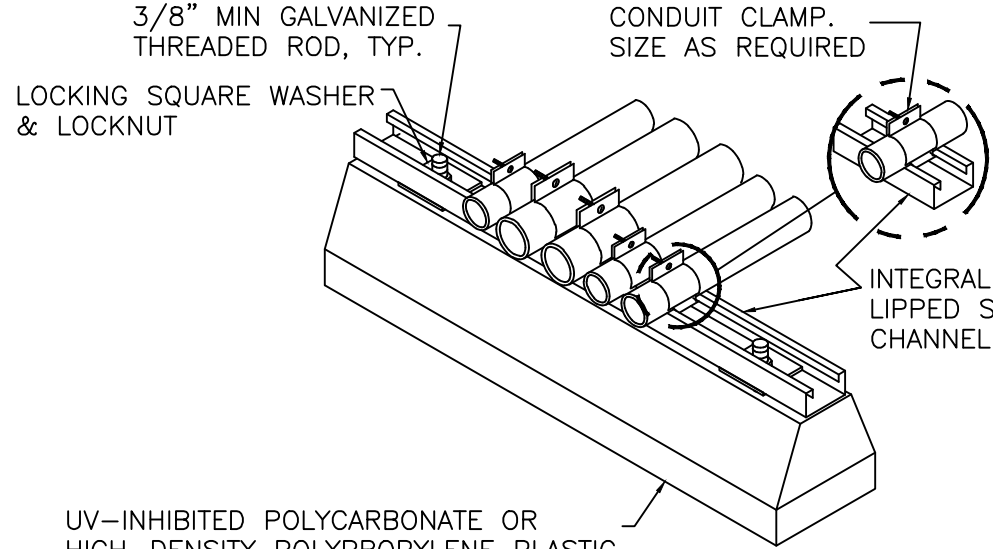
- NOTES:
1. WHEN DRAIN SUMP EXCEEDS 1:12 DRAIN INSERT IS RECOMMENDED.
 2. THE MEMBRANE SHOULD EXTEND A MINIMUM OF 1/2" (12.7 MM) BEYOND THE CLAMPING RING AND SHOULD NOT BE SMALLER THAN THE DIAMETER OF THE LEADER PIPE.

A. IF FIELD SEAM IS WITHIN 9" (228.6 MM) OF DRAIN COMPRESSION RING, A SMOOTH MODIFIED BITUMEN TARGET PATCH IS REQUIRED.
B. FIELD SHEET LAPS CAN NOT GO INTO A DRAIN RING.
C. NO SEAM CAN BE WITHIN 6" (236 MM) OF THE CLAMPING RING

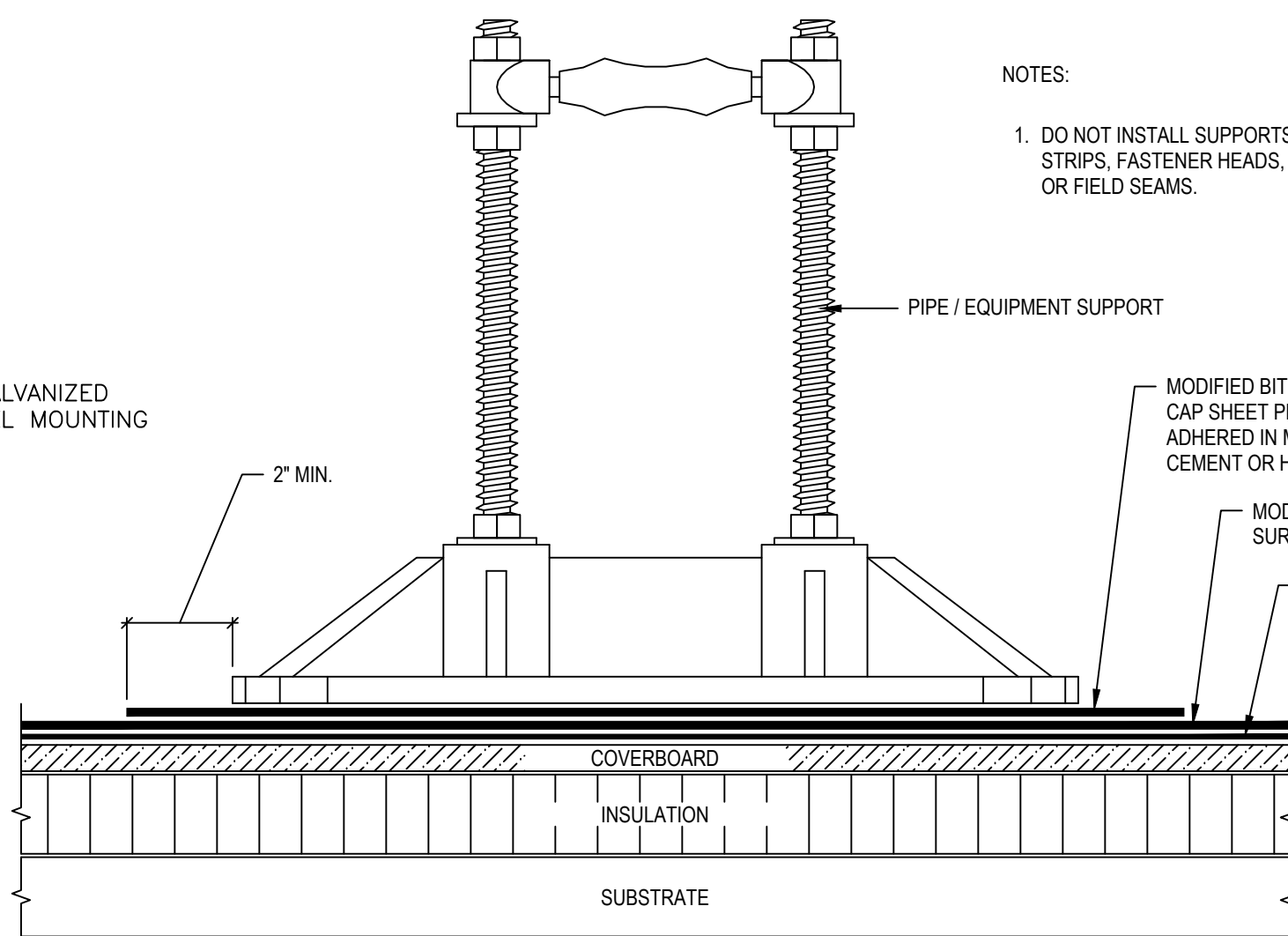
3 ROOF DRAIN DETAIL
NOT TO SCALE



4 PLUMBING VENT DETAIL
NOT TO SCALE

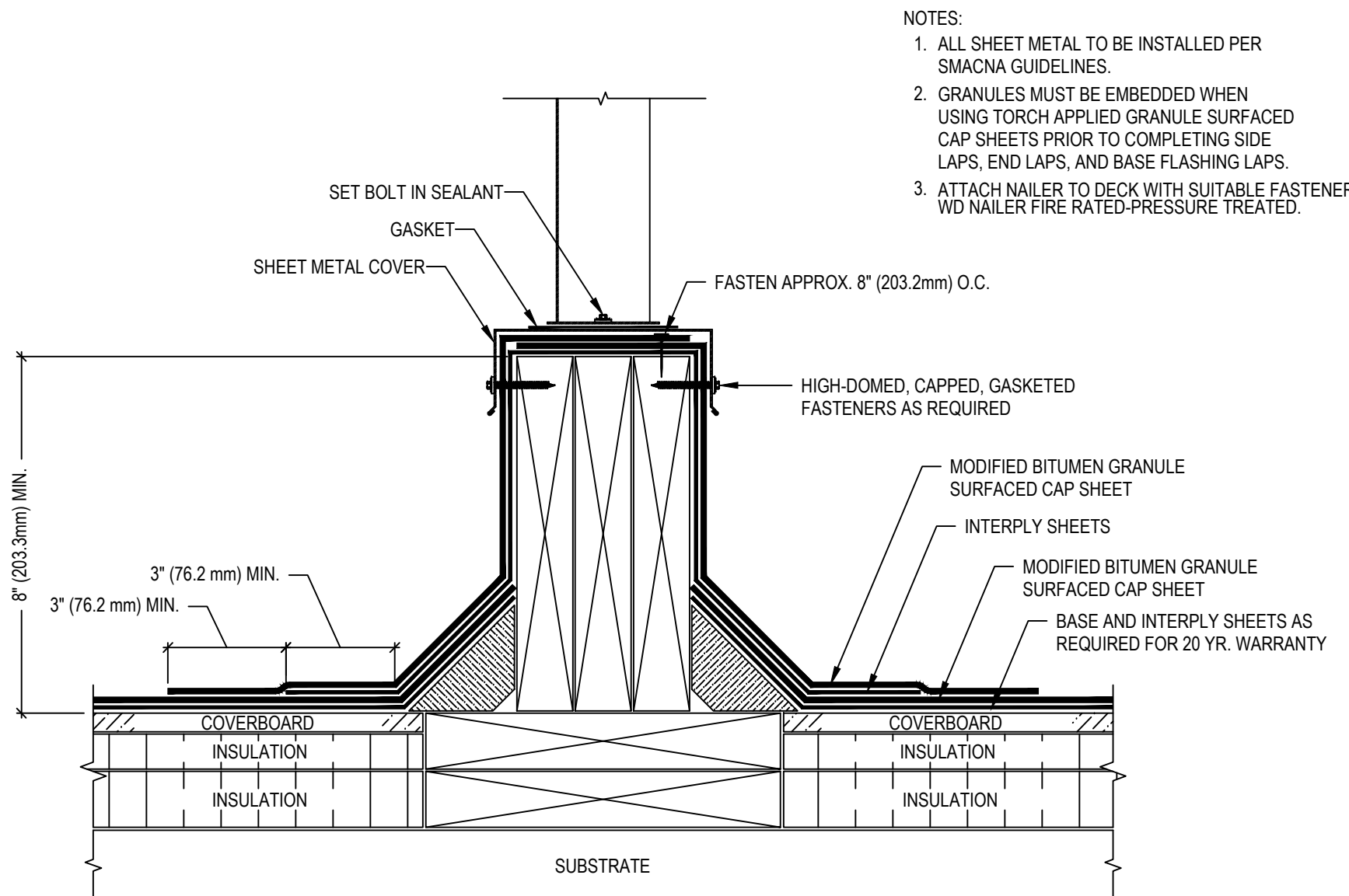


DETAIL 'A'



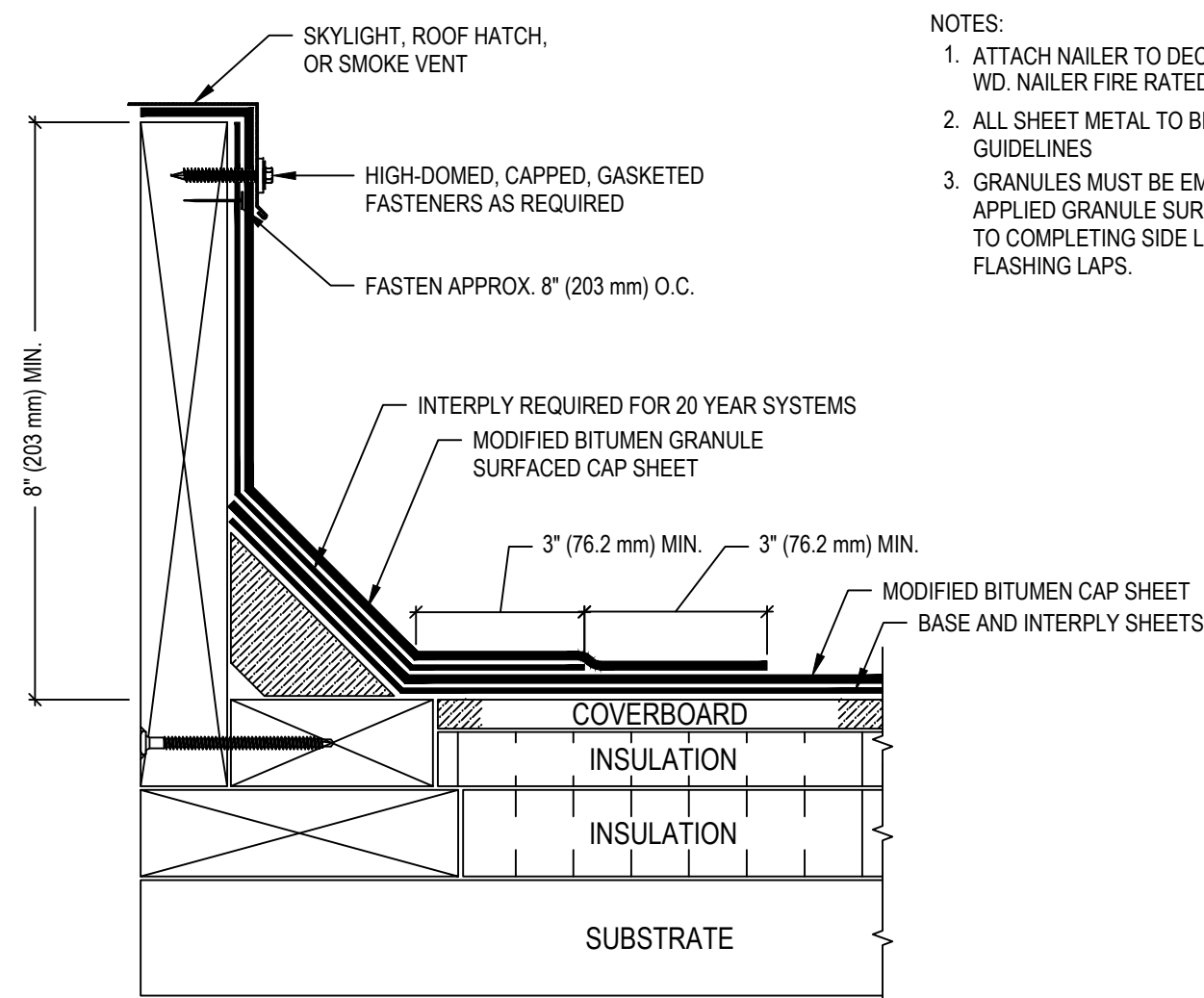
DETAIL 'B'

5 CONDUIT/PIPE SUPPORT DETAILS
NOT TO SCALE

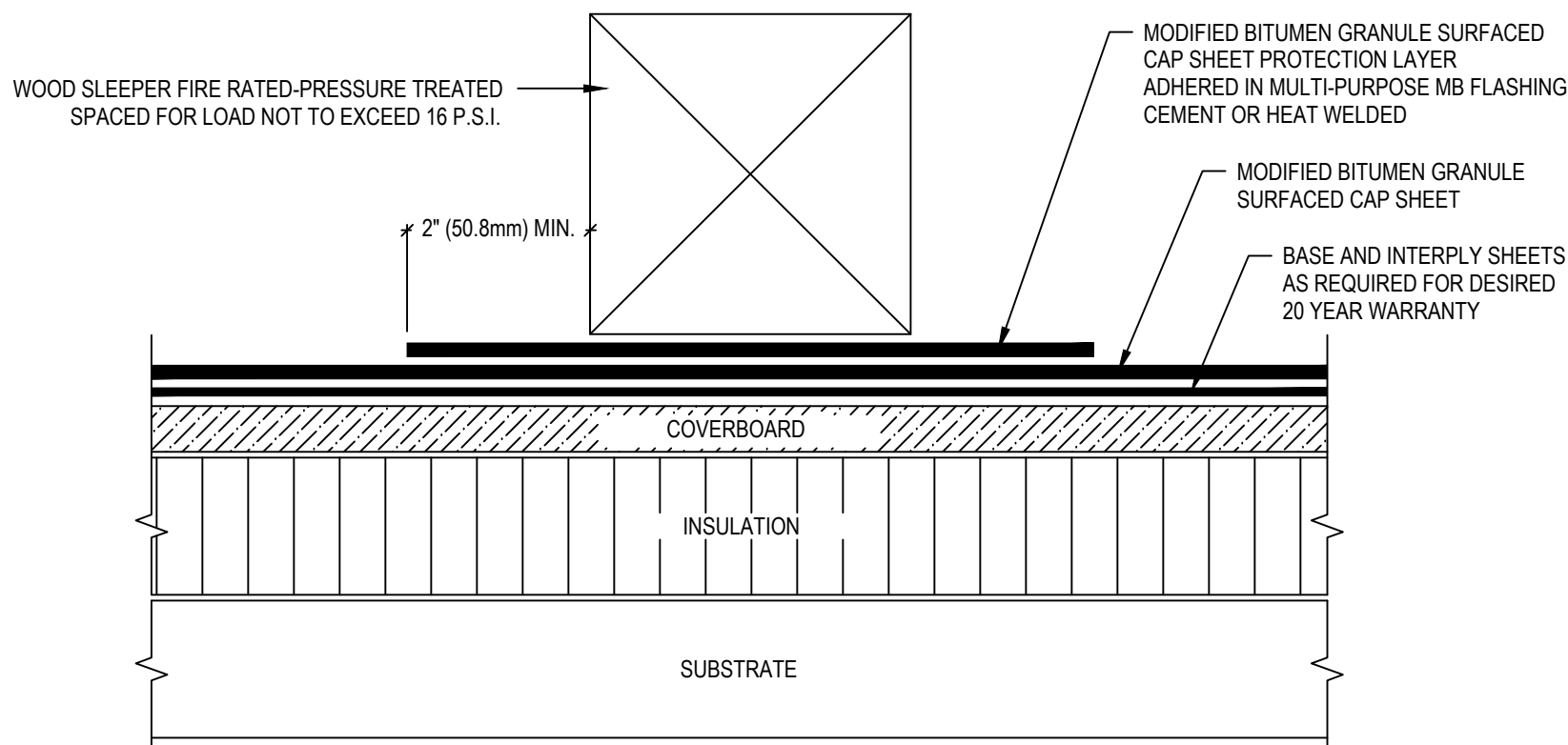


- NOTES:
1. ALL SHEET METAL TO BE INSTALLED PER SMACNA GUIDELINES.
 2. GRANULES MUST BE EMBEDDED WHEN USING TORCH APPLIED GRANULE SURFACED CAP SHEETS PRIOR TO COMPLETING SIDE LAPS, END LAPS, AND BASE FLASHING LAPS.
 3. ATTACH NAILER TO DECK WITH SUITABLE FASTENER WD NAILER FIRE RATED-PRESSURE TREATED

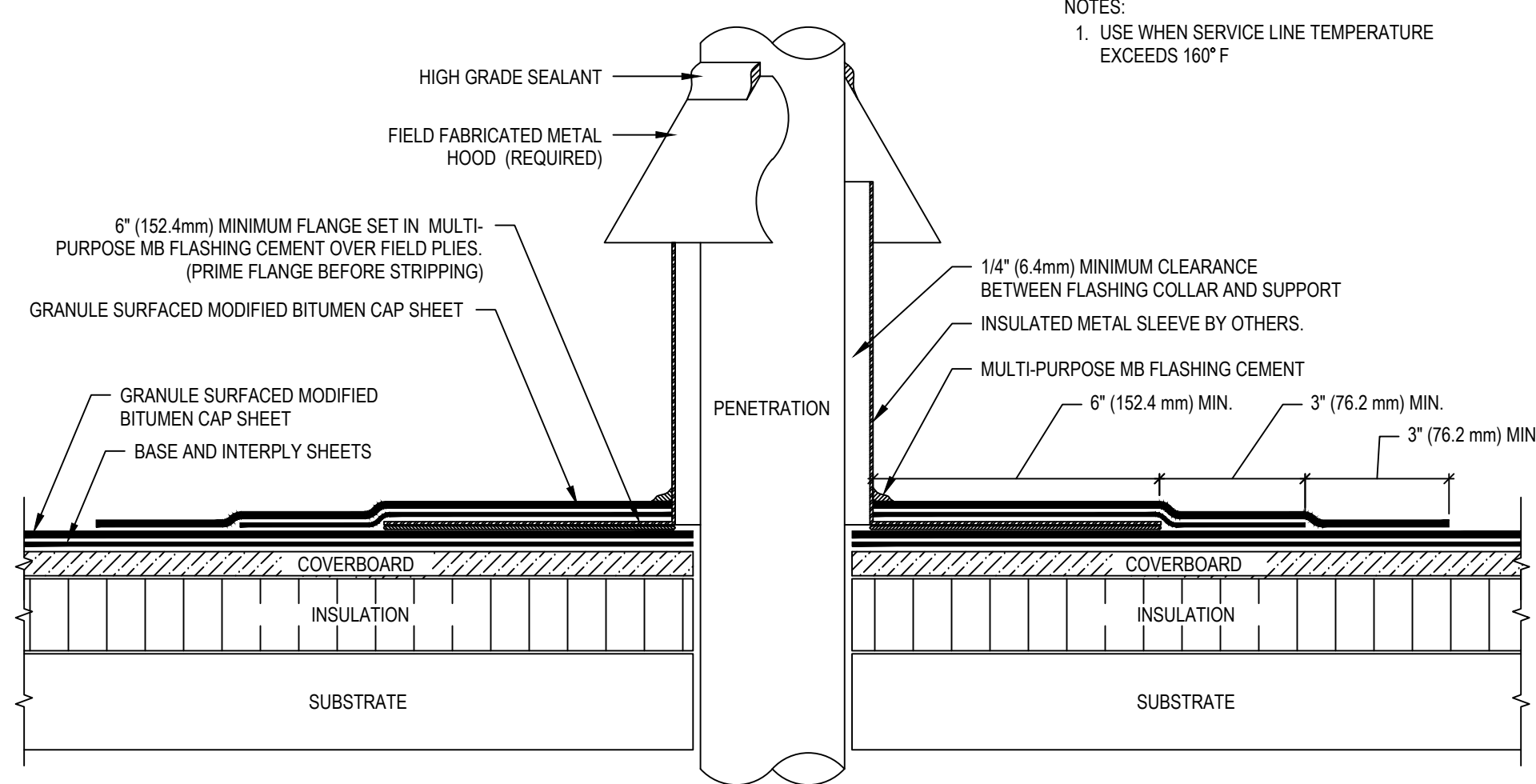
6 EQUIPMENT SUPPORT CURB
NOT TO SCALE



7 ROOF HATCH DETAIL
NOT TO SCALE




8 SLEEPER DETAIL
NOT TO SCALE



- NOTES:
1. USE WHEN SERVICE LINE TEMPERATURE EXCEEDS 160° F

9 HOT STACK FLASHING DETAIL
NOT TO SCALE

		CONSULTANTS:				ARCHITECT/ENGINEERS:		Drawing Title		Project Title		Project Number		Office of Construction and Facilities Management Department of Veterans Affairs			
		Roofing Consultant: Robert L. Dye, LC PO BOX 4581 Overland Park, Kansas, 66204		Industrial Hygiene Consultant: John A. Jurgiel + Associates, Inc. 1810 Craig Road, Suite 207 St. Louis, Missouri 63146				ROOF DETAILS 1		REPLACE MAJOR ROOFS BUILDING # 1		636A8-11-004					
						1401 Indian Pipe Lane, Wildwood, MO. 63038 Phone (314) 401-4078 phoenixdzn@yahoo.com		Approved Project Director		Location IOWA CITY VAMC, IOWA		Building Number BLDG # 1					
Revisions:		Date								Date 03-13-2012		Checked RWT				Drawing Number 1-A14	
										Drawn REC						Dwg. 15 of 18	