

HVAC NOTES

10. REMOVE EXISTING CHILLED WATER PRE-HEATERS IN NEW WORK.
11. REMOVE EXISTING PIPING TO REMAIN. REMOVE FLEXIM BTUH METER.
12. REMOVE EXISTING PIPING TO REMAIN. REMOVE FLEXIM BTUH METER.
13. REMOVE EXISTING PIPE SUPPORT AND PATCH ROOF TO MATCH EXISTING.
14. REMOVE EXISTING EXPANSION TANK AND ASSOCIATED PIPING, SUPPORTS, ETC. FOR REPLACEMENT IN NEW WORK.
15. REMOVE EXISTING PUMP SUCTION AND DISCHARGE PIPING TO BUTTERFLY VALVES IN VERTICAL. FOR RECONNECTION IN NEW WORK.
16. REMOVE EXISTING BASE MOUNTED PUMP AND ASSOCIATED PIPING AND ACCESSORIES. FOR REPLACEMENT IN NEW WORK.
17. EXISTING CONCRETE INERTIA BASE TO REMAIN AND BE REUSED IN NEW WORK.
18. REMOVE EXISTING PNEUMATIC CHILLED WATER ISOLATION CONTROL VALVES FOR REPLACEMENT WITH ELECTRIC VALVES IN NEW WORK. REMOVE PNEUMATIC LINES BACK TO POINT OF ACTIVE MAIN, CAP AND SEAL AIRTIGHT. UNDER DUCTWORK ALTERNATE #2 (BID ITEM #8), DELETE REMOVAL OF THESE VALVES FROM THE PROJECT SCOPE.
19. EXISTING PIPING TO REMAIN.
20. REMOVE EXISTING INSULATION AND HEAT TRACE CABLE ON ALL EXTERIOR PIPING. AND ASSOCIATED WIRING, ACCESSORIES, ETC. FOR REPLACEMENT IN NEW WORK.
21. EXISTING DUCTWORK TO REMAIN.
22. REMOVE EXISTING PIPING TO THIS POINT AND CAP.
23. EXISTING DUCT SUPPORT LEGS TO REMAIN.
24. EXISTING ROOF DRAIN TO REMAIN.
25. UNDER DUCTWORK ALTERNATE #1 (BID ITEM #2), DELETE THIS PIPING REMOVAL FROM THE PROJECT SCOPE.
26. REMOVE EXISTING 3-WAY CHILLED WATER DDC CONTROL VALVE FOR REPLACEMENT IN NEW WORK. UNDER DUCTWORK ALTERNATE #2 (BID ITEM #4), DELETE REMOVAL OF THIS VALVE FROM THE SCOPE OF THE PROJECT.
27. CAREFULLY REMOVE EXISTING TEMPERATURE SENSING ELEMENT ASSOCIATED WITH EXISTING FLEXIM ULTRASONIC BTUH METER. FOR REINSTALLATION IN NEW PIPING.
28. EXISTING MANUAL BUTTERFLY VALVE TO REMAIN.
29. TEMPERATURE AND/OR FLOW SENSOR ASSOCIATED WITH EXISTING FLEXIM ULTRASONIC BTUH METER TO REMAIN.
30. REMOVE EXISTING CHILLER FLOW SWITCH AND ASSOCIATED WIRING, ETC. FOR REPLACEMENT IN NEW WORK.
31. REMOVE EXISTING DDC TEMPERATURE SWITCH AND ASSOCIATED WIRING, ETC. FOR REPLACEMENT IN NEW WORK.
32. CAREFULLY REMOVE EXISTING FLOW SENSING ELEMENT ASSOCIATED WITH EXISTING FLEXIM ULTRASONIC BTUH METER. FOR REINSTALLATION IN NEW PIPING.
33. EXISTING FLEXIM BTUH METER TO REMAIN.
34. REMOVE EXISTING PIPING TO THIS POINT FOR RECONNECTION IN NEW WORK.
35. REPLACE PRE-FILTERS (90% EFF. (2) 24x24x15, (2) 24x12x15) AND FINAL FILTERS (40% EFF. (2) 24x24x30, (2) 24x12x30) IN UNIT AHU-32 AT THE BEGINNING OF CONSTRUCTION, AND AGAIN, ONCE CONSTRUCTION HAS BEEN COMPLETED.
36. REMOVE EXISTING DUCTWORK TO THIS POINT FOR RECONNECTION IN NEW WORK.
37. REMOVE EXISTING DUCT SUPPORT LEGS FOR REPLACEMENT IN NEW WORK.

GENERAL NOTES

- A. REFER TO SHEET ME01 FOR INDEX, LEGEND AND ADDITIONAL GENERAL NOTES.
- B. REFER TO DEMO PIPING SCHEMATIC ON SHEET M602 FOR ADDITIONAL REMOVAL DETAILS.
- C. DURING CONSTRUCTION, THE CONTRACTOR SHALL WORK WITH THE COR AND THE CINCINNATI VAMC MAINTENANCE STAFF TO ENSURE THE PROPER COOLING CAN BE PROVIDED FOR ALL THE AIR HANDLING UNITS SERVED BY THE OR CHILLERS THROUGHOUT THIS PROJECT. AHU-4, 5, 10, 22, 23, 24, AND 32 ARE EITHER 100% OUTSIDE AIR UNITS OR CAN RUN IN AIRSIDE ECONOMIZER MODE, AND CAN OPERATE WITHOUT CHILLED WATER AS LONG AS THE OUTSIDE AIR TEMPERATURE DOES NOT EXCEED 65°F. AIR HANDLING UNITS SERVED CONTINUOUSLY BY CHILLED WATER CHILLED WATER FOR AHU-23 AS WELL AS THE OTHER AIR HANDLING UNITS CAN BE SUPPLIED FROM THE CENTRAL CHILLER PLANT. IF CHILLED WATER MUST BE TURNED OFF TO AHU-23 DURING THE WINTER MONTHS, IT SHALL BE DONE AFTER NORMAL WORKING HOURS, AND AFTER SCHEDULING THE SHUTDOWN WITH THE OPERATING ROOM STAFF AT LEAST TWO WEEKS IN ADVANCE.
- D. ALL WORK ASSOCIATED WITH ROOF CURBS, REMOVAL OF EXISTING CHILLERS, OR PLACEMENT OF NEW CHILLERS MUST BE DONE OUTSIDE OF OPERATING ROOM WORKING HOURS.

ELECTRICAL NOTES

1. DISCONNECT LIGHTNING PROTECTION CABLE FROM CHILLER. ROLL UP AND SAVE FOR CONNECTION TO NEW CHILLERS.
2. DISCONNECT ANTI-BIRD SOUND DEVICE. REMOVE AND SAVE FOR REPLACEMENT ON NEW CHILLER.
3. DISCONNECT HEAT TAPE FROM 120V CIRCUIT. CIRCUIT WILL BE REUSED FOR NEW HEAT TRACE TAPE PROVIDED BY DIV. 23 CONTRACTOR.
4. JUNCTION BOX FOR HEAT TRACE CIRCUIT. ETR.
5. DISCONNECT CHILLERS AND REMOVE CIRCUITRY TO DISCONNECT SWITCH.
6. DISCONNECT PUMPS AND REMOVE STARTERS. BY DIV. 26. REUSE CIRCUIT FOR NEW PUMPS.

1 FOURTH FLOOR-REMOVALS

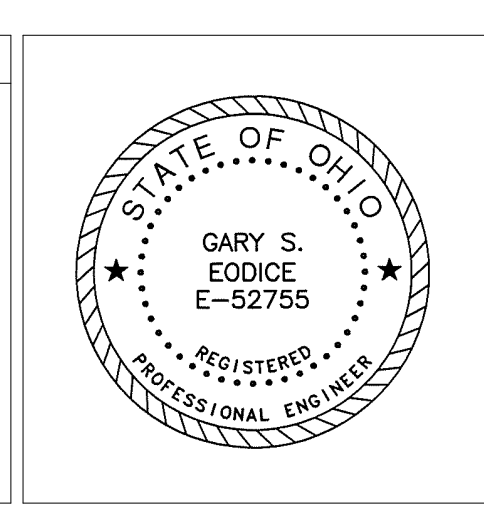
SCALE: 1/4" = 1'-0"

three inches = one foot
 one and one-half inches = one foot
 one inch = one foot
 three-quarters inch = one foot
 one-half inch = one foot
 three-eighths inch = one foot
 one-quarter inch = one foot
 one-eighth inch = one foot

1	ADDENDUM 1	5/24/2017
2	ADDENDUM 2	6/6/2017
Revision		Date

CONSULTANTS:

Heapy Engineering
 MEP Design Technology Planning Commissioning Energy
Nationally Recognized Leader in Sustainability
 1400 W Dorothy Lane, Dayton, OH 45409-1310
 Ph 937-224-0861 Fax 937-224-5777 www.heapy.com
 Heapy Project No.: 2016-04003 Firm License No.: 01528



ARCHITECT/ENGINEERS:

LEVIN PORTER ARCHITECTS
 3011 NEWMARK DRIVE 0: 937.224.1931
 MIAMI SBURG, OHIO 45342 F: 937.224.3091
 www.levin-porter.com
 Levin Porter Associates Inc. dba Levin Porter Architects

Drawing Title

FOURTH FLOOR-REMOVALS

Approved: Project Director

Project Title

Replace Operating Room Chillers

Location

Cincinnati, Ohio

Date

5/1/2017

Checked

MSG/BGA

Drawn

JB/JAC

Project No.

VA Project No. 539-18-203
 LPA Project No. 62131.00

Building Number

1

Drawing Number

MED104

Dwg. of

Office of Construction and Facilities Management

Department of Veterans Affairs

