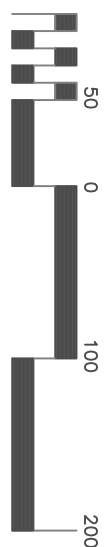




	SIGN #	DESCRIPTION	REMARKS	VA SIGN # VA SIGN #	
1.	A	INTERIALLY ILLUMINATED MONUMENT SIGN INTERIALLY ILLUMINATED MONUMENT SIGN	TO BE REMOVED COMPLETELY	EN-01-03	EXIST CONC. BASE MAY BE REUSED
	D.G.	EXTERNALLY ILLUMINATED PANEL SIGN	REMOVE AND REPLACE	EN-03-03	
	C.F./K	NON-ILLUMINATED PANEL SIGN	REMOVE AND REPLACE	EN-03-03	
	B.J	NON-ILLUMINATED PANEL SIGN	REMOVE AND REPLACE	EN-03-06	
	H.M.N	NON-ILLUMINATED PANEL SIGN	REMOVE AND REPLACE	EN-03-06	
	L	NON-ILLUMINATED PANEL SIGN	TO BE REMOVED COMPLETELY	EN-03-06	
	E	TRAFFIC CONTROL SIGN	REMOVE AND REPLACE	EN-10	
1.		MONUMENT SIGNS, EN-01-03: LETTERING AND LOGO SHALL BE WHITE, BACKGROUND IN VA BLUE			
2.		PANEL SIGNS, EN-03-03: LETTERING AND ARROWS SHALL BE WHITE, BACKGROUND IN VA BLUE			
3.		PANEL SIGNS, EN-03-06: LETTERING AND ARROWS SHALL BE WHITE, BACKGROUND IN VA BLUE			
4.		TRAFFIC CONTROL SIGNS, EN-10: CONFORM TO US DOT MUTCD, LATEST EDITION			

SIGNAGE SCHEDULE VA OUTPATIENT CLINIC		SIGNAGE SCHEDULE VA OUTPATIENT CLINIC	
SIGN #	DESCRIPTION	REMARKS	VA SIGN # VA SIGN #
A	INTERNALLY ILLUMINATED MONUMENT SIGN	TO BE REMOVED COMPLETELY	EN-01-03
D,G	INTERNALLY ILLUMINATED MONUMENT SIGN	REMOVE AND REPLACE	EXIST CONC. BASE MAY BE REUSED
C,F,I,K	EXTERNALLY ILLUMINATED PANEL SIGN	REMOVE AND REPLACE	EN-03-03
B,J	NON-ILLUMINATED PANEL SIGN	REMOVE AND REPLACE	EN-03-03
H,M,N	NON-ILLUMINATED PANEL SIGN	REMOVE AND REPLACE	EN-03-06
L	NON-ILLUMINATED PANEL SIGN	TO BE REMOVED COMPLETELY	EN-03-06
E	TRAFFIC CONTROL SIGN	REMOVE AND REPLACE	EN-10
1. MONUMENT SIGNS, EN-01-03: LETTERING AND LOGO SHALL BE WHITE BACKGROUND IN VA BLUE 2. PANEL SIGNS, EN-03-03: LETTERING AND ARROWS SHALL BE WHITE BACKGROUND IN VA BLUE 3. PANEL SIGNS, EN-03-06: LETTERING AND ARROWS SHALL BE WHITE BACKGROUND IN VA BLUE 4. TRAFFIC CONTROL SIGNS, EN-10: CONFORM TO US DOT MOTO, LATEST EDITION			

one inch = one hundred feet



Drawing Title

## SITE SIGNAGE LOCATION PLAN

SCALE 1" = 100'

Approved: Area Projed. Manager

---

---

1000000

<div> <div>REPLACEMENT TITLE</div> <div>REPLACE SITE SIGNAGE AND WAYFINDING VA PROJECT #756-12-105</div> </div>	<div> <div>Building Number</div> <div></div> </div>	<div> <div>Checked</div> <div></div> </div>	<div> <div>Drawn</div> <div></div> </div>
<div> <div>LOCATION</div> <div>VA OUTPATIENT CLINIC EL PASO, TEXAS</div> </div>			

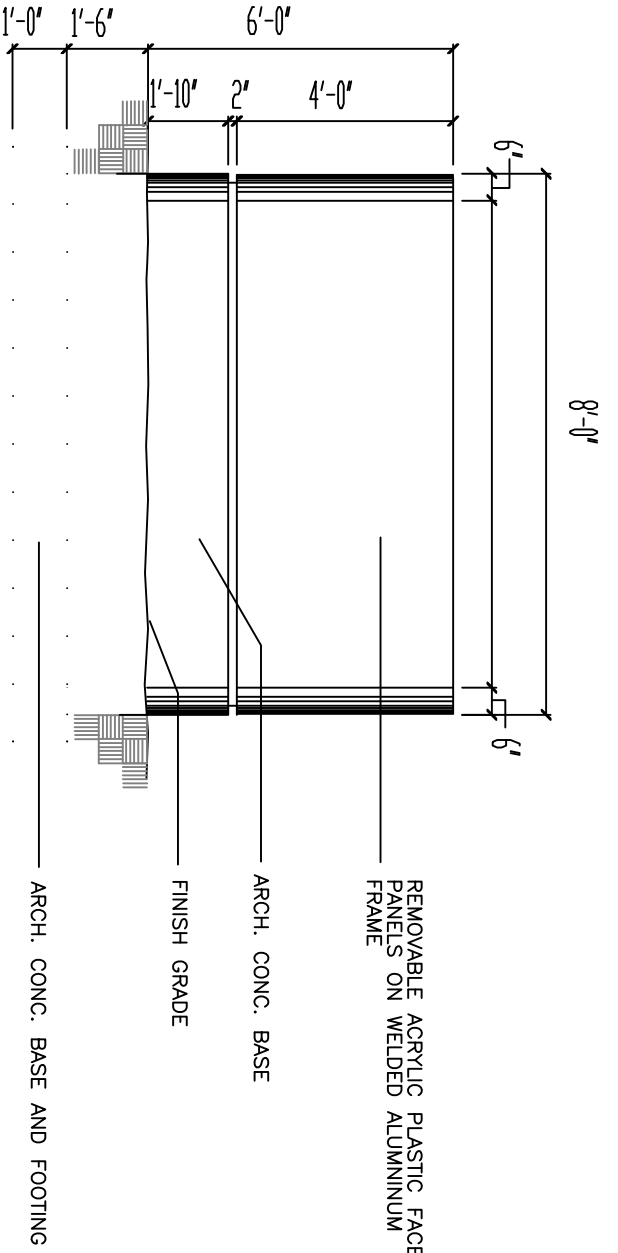
Bid Date

Project No.

DRAWING NO

1

[illegible]



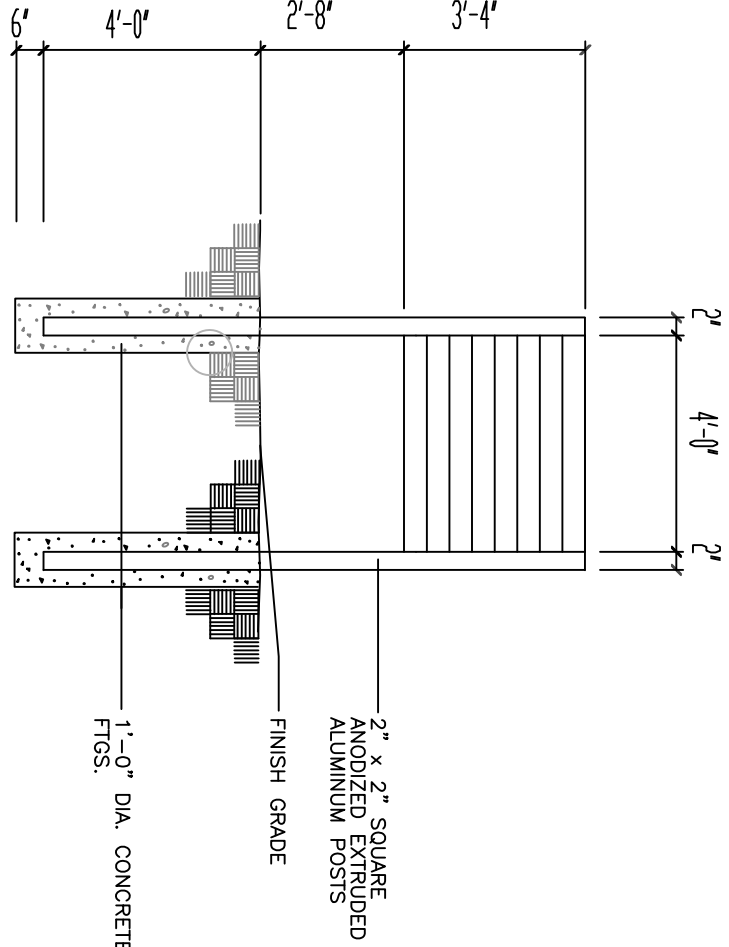
TYPE EI-01.03, MESSAGE LAYOUT D  
ENTRANCE IDENTIFICATION

- D** } EAST AND WEST FACES  
INTERNALLY ILLUMINATED  
DEPT. OF VETERANS AFFAIRS  
Outpatient Clinic  
EI Paso
- G** SOUTH FACE  
INTERNALLY ILLUMINATED  
DEPT. OF VETERANS AFFAIRS  
Outpatient Clinic  
EI Paso

Note: 1. Lettering and Logo as per VA Design Guide  
2. Lighting as per VA Design Guide  
3. Construction as per VA Design Guide & Specifications  
4. Existing concrete base is 7'-0" in length

NOTES: ALL SIGNS EXCEPT TRAFFIC CONTROL,  
WHICH IS SEPARATELY NOTED

1. ALL LETTERS WILL BE HELVETICA MEDIUM UPPER & LOWER CASE
2. EMERGENCY WILL ALWAYS APPEAR AT THE TOP AND WILL CONSIST OF WHITE LETTERS ON A RED BACKGROUND BAND
3. OTHER LETTERS WILL BE WHITE ON VA BLUE BACKGROUND
4. LOGOS WILL BE WHITE ON A VA BLUE BACKGROUND
5. ANY SIGN WHICH INCLUDES EMERGENCY WILL BE EXTERNALLY ILLUMINATED EXCEPT FOR SIGNS WHICH ARE NOTED TO BE INTERNALLY ILLUMINATED
6. ALL SIGNS WILL CONFORM TO THE REQUIREMENTS OF VA SPECIFICATIONS AND THE VA DESIGN GUIDE FOR EXTERIOR SIGNS.



TYPE EN-03.03, MESSAGE LAYOUT A  
DIRECTIONAL – 3 inch Lettering

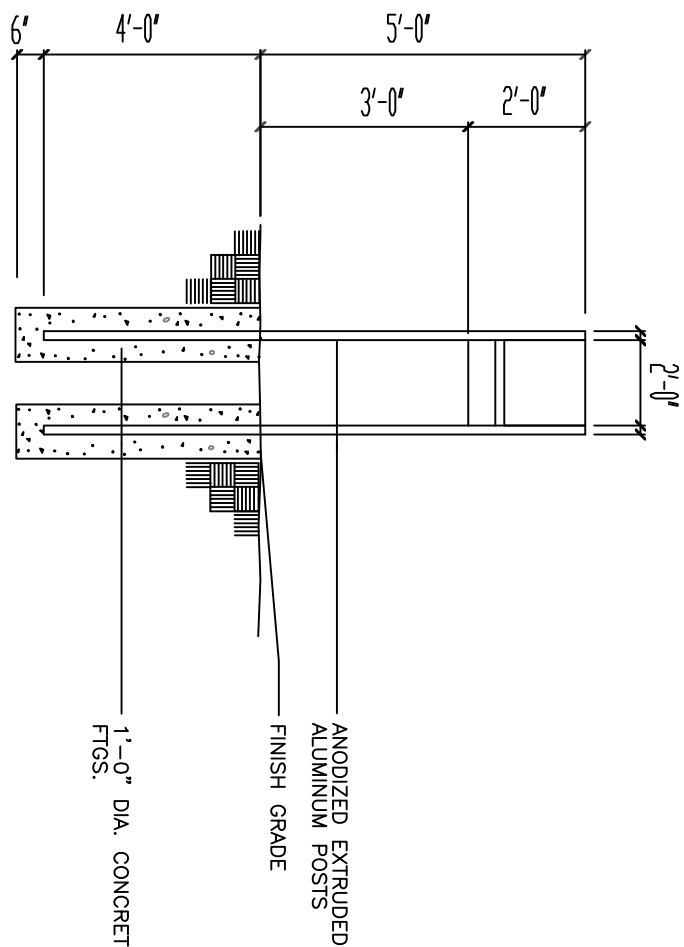
- C** NORTH FACE  
VA Outpatient Clinic  
VA Service Dock  
WBAMC Service Dock
- B** EAST FACE  
EXTERNALLY ILLUMINATED  
EMERGENCY  
WBAMC
- B** WEST FACE  
VA Outpatient Clinic  
VA Service Dock  
WBAMC Service Dock

- F** NORTH FACE  
VA Outpatient Clinic
- F** SOUTH FACE  
EXTERNALLY ILLUMINATED  
EMERGENCY  
WBAMC

- J** EAST FACE  
EXTERNALLY ILLUMINATED  
EMERGENCY  
VA Outpatient Clinic  
WBAMC
- J** WEST FACE  
VA Service Dock  
WBAMC Service Dock

- K** NORTH FACE  
EXTERNALLY ILLUMINATED  
EMERGENCY  
VA Outpatient Clinic  
WBAMC

Note: 1. Lettering and arrows as per VA Design Guide  
2. Lighting – "Ac" light fixture  
3. Construction as per VA Design Guide & Specifications

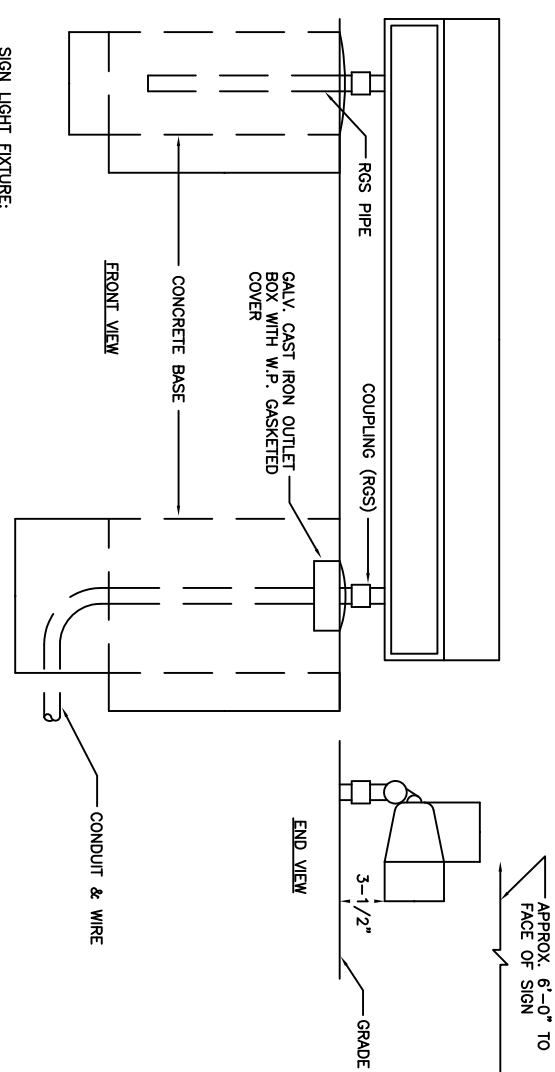


TYPE EN-03.06, MESSAGE LAYOUT A  
MINOR IDENTIFICATION – 2 inch Lettering

- N** EAST FACE  
NORTH FACE
- H** SOUTH FACE  
NO BOTTOM PANEL  
Bus Stop
- M** WEST FACE  
NO BOTTOM PANEL  
HELPD  
AUTHORIZED  
VEHICLES ONLY

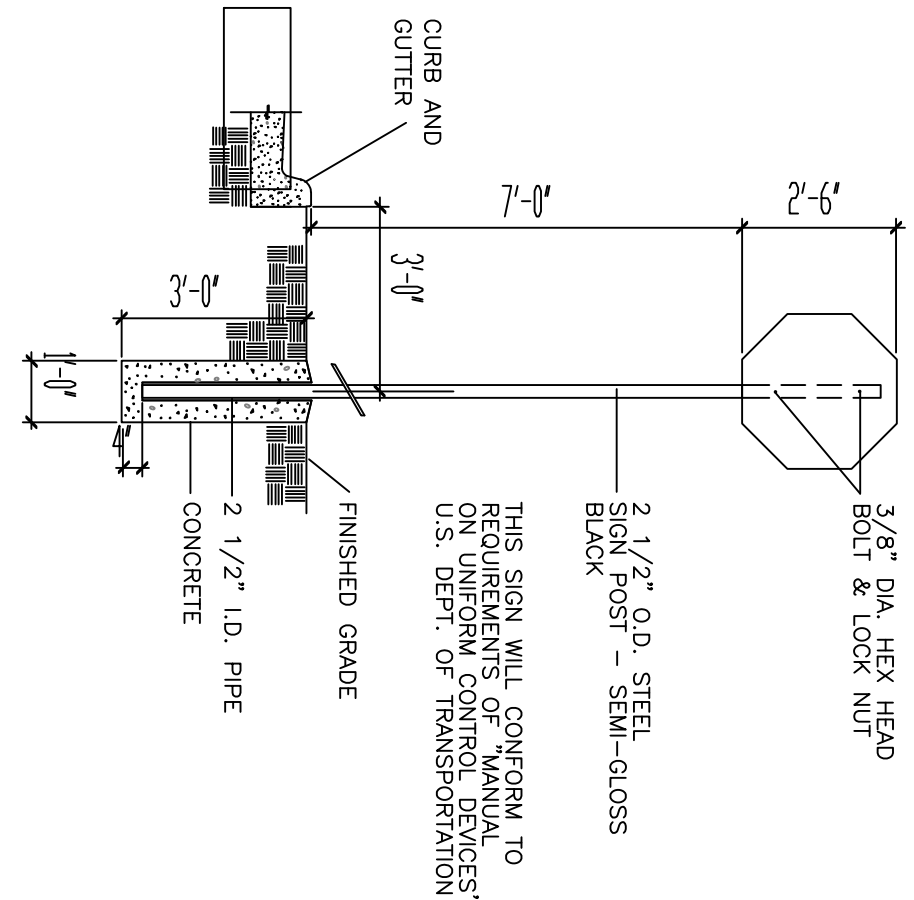


MRI



NOTE: 1. LETTERING AND ARROWS AS PER VA DESIGN GUIDE  
2. LIGHTING – "AC" LIGHT FIXTURE  
3. CONSTRUCTION AS PER VA DESIGN GUIDE & SPECIFICATIONS

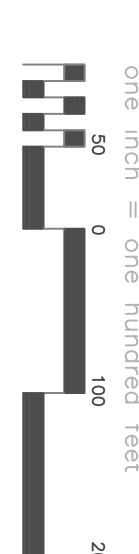
FIXTURE TYPE "AE" DETAIL



TYPE EN-10  
TRAFFIC CONTROL

- E** NORTH FACE  
SOUTH FACE  
EAST FACE
- YIELD TO PEDESTRIANS

ALL TRAFFIC CONTROL SIGNS WILL CONFORM TO REQUIREMENTS OF "MANUAL OF UNIFORM CONTROL DEVICES", U.S. DEPT. OF TRANSPORTATION



one inch = one hundred feet



NORTH

Rev's are

DATE

11/31 E. VANDELL #100 EL PASO, TX 79902  
PH (915) 565-5205 FAX (915) 565-9220  
e - mail: chong@swbell.net  
REGISTRATION No. F - 5187



**SCB** ENGINEERING, INC.  
CONSULTING ENGINEERS

**ENCON** Internacional, Inc.  
Engineering, Environmental & Technical Services

SDVOSB  
Service Disabled Veterans Owned Small Business

7307 Remon, Suite #103  
El Paso, TX 79905  
Tel: (915) 853-3740  
Fax: (915) 851-2049  
Email: Alex@enconinternational.com

Drawing Title

**SITE SIGNAGE DETAILS**

SCALE 1" = 100'

Approved: Area Project Manager

Build ing Number

Checked

Drawn

CREATION

**VA OUTPATIENT CLINIC**

EL PASO, TEXAS

Bid Date

Projed No.

DRAWING NO.

**L-02**

Div. 01

Office of Facilities

Department of Veterans Affairs