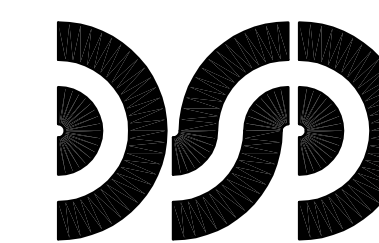


- SHEET NOTES:

1. REFER TO THE GENERAL NOTES, DRAWING NO. E-001..
2. ALL CONDUIT PENETRATIONS THROUGH FLOORS AND WALLS SHALL BE FIRE STOPPED UPON CABLE INSTALLATION WITH A FIRE RATED FIRE STOPPING MATERIAL TO MAINTAIN FIRE RATING. LABEL EACH PENETRATION UPON FIRE STOP COMPLETION.
3. EXACT ROUTING OF CONDUIT TO BE FIELD VERIFIED PRIOR TO INSTALLATION.
4. PROVIDE ALL NECESSARY CONDUIT SUPPORT COMPONENTS AND ACCESSORIES FOR A COMPLETE INSTALLATION.
5. CONTRACTOR TO REMOVE AND RE-INSTALL CEILING TILES DAMAGED CEILING TILES TO BE REPLACED AT CONTRACTORS EXPENSE.



**DiClemente  
Siegel  
Design  
Inc.**  
Engineering and Architecture

28105 Greenfield Rd. Southfield, MI 48076-3046  
Voice: 248.569.1430 Fax: 248.569.0096  
Email: [mktg@dsdonline.com](mailto:mktg@dsdonline.com)  
Website: <http://www.dsdonline.com>



VA MEDICAL CENTER  
IT INFRASTRUCTURE  
UPGRADE - PHASE II  
ANN ARBOR, MICHIGAN



**BUILDINGS 1E & 1W  
PARTIAL BASEMENT  
FLOOR PLAN -  
ELECTRICAL**

© 2010 DiClemente Siegel Design Inc.

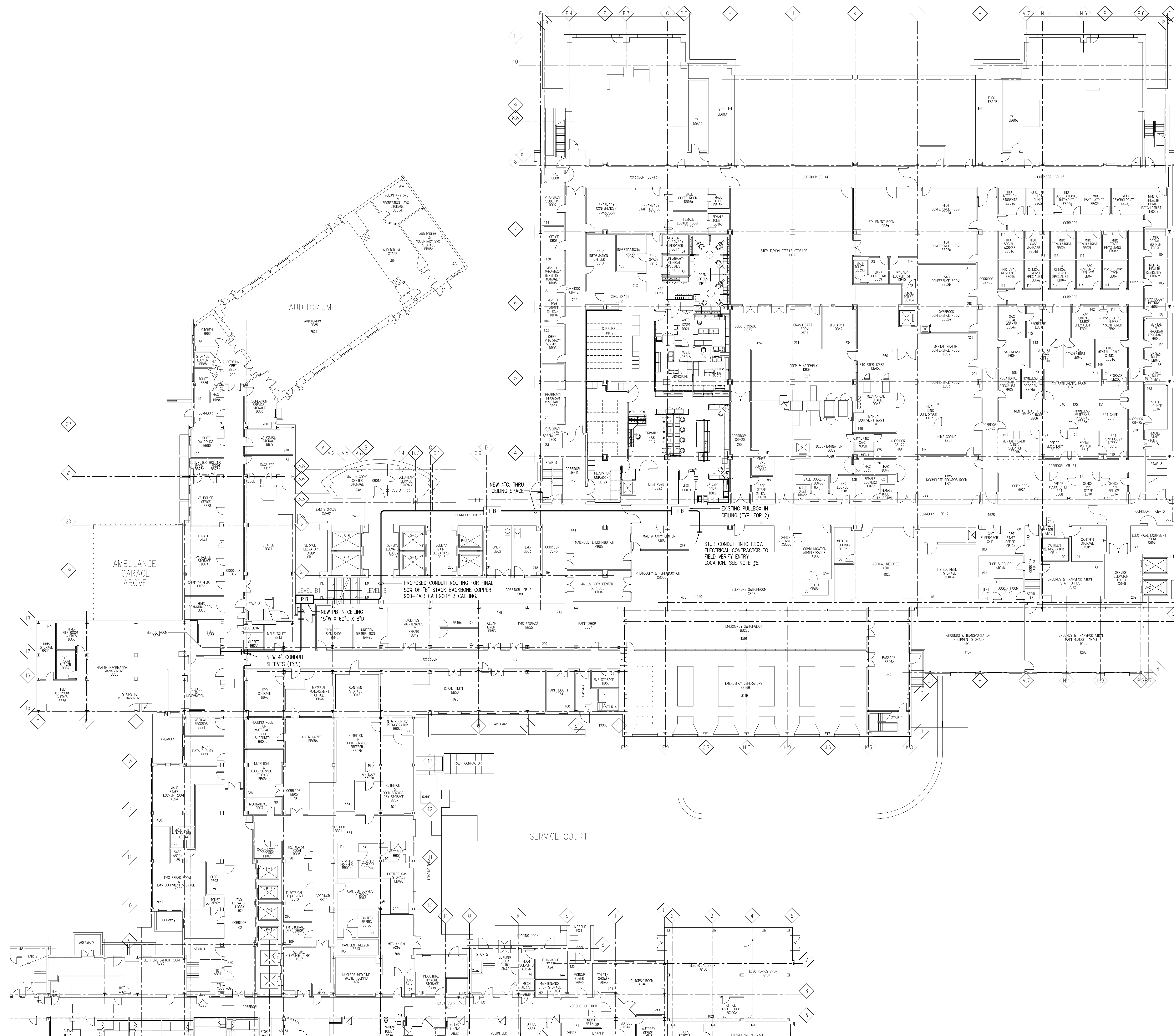
These documents are instruments of service for use solely with respect to this project. DSD and DSD's consultants shall be deemed the authors and owners of their respective instruments of service and shall retain all common law, statutory and other reserved rights, including copyrights. DSD grants to the owner a nonexclusive license to reproduce DSD's instruments of service solely for the purposes of constructing, using and maintaining this project.

These documents are two dimensional, traditional plan and specification documents that are not intended to be used by the contractor as shop drawings. Final dimensions, equipment access, routing, miscellaneous fittings, final installation and coordination is the contractor's responsibility.

[illegible]

<b>DRAWN:</b>	RPG
<b>PM / PIC:</b>	NDG/LAT
<b>CHECKED:</b>	SM
<b>ACADFILE:</b>	10-2901.32-E-10
<b>PROJECT No.</b>	<b>10-2901.32</b>

## E-100



BUILDINGS 1E &amp; 1W PARTIAL BASEMENT PLAN – ELECTRICAL

SCALE:  $1/16" = 1'-0"$

