

1 2 3 4 5 6 7 8 9

A

B

C

D


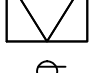








E

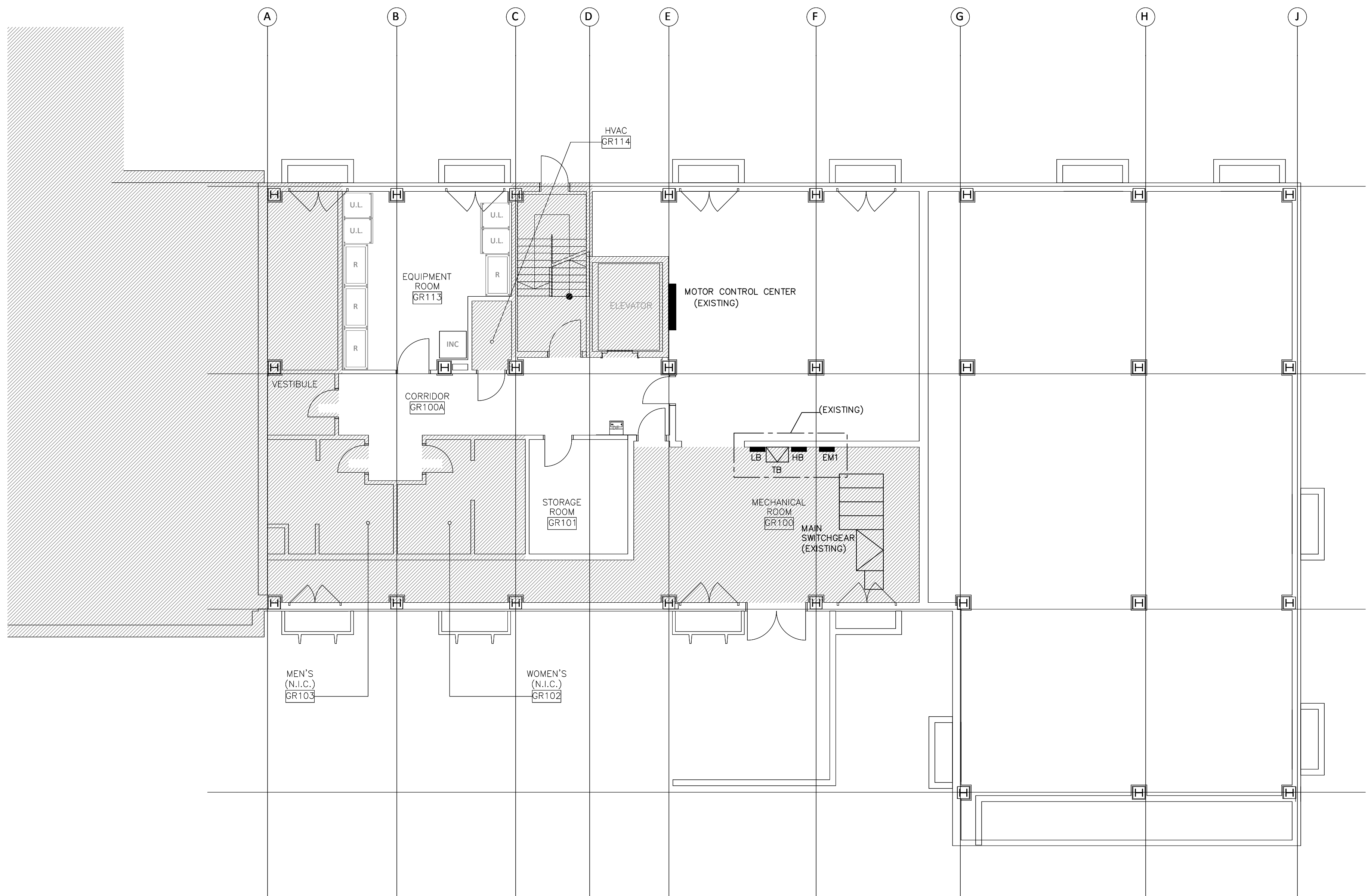
F

GENERAL NOTES

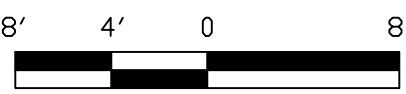
- ALL WORK SHOWN ON THIS SHEET SHALL BE PERFORMED IN ACCORDANCE WITH NFPA 70-2002, NATIONAL ELECTRICAL CODE.
- LAYOUTS SHOWN ON THIS SHEET ARE DIAGRAMMATIC AND DO NOT NECESSARILY DEPICT EXACT CONFIGURATIONS. EQUIPMENT AND DEVICE LOCATIONS SHALL BE AS NEAR AS PRACTICABLE TO LOCATIONS SHOWN EXCEPT WHERE SPECIFIED, NOTED, OR INDICATED OTHERWISE.
- PROVIDE ALL POWER AND CONNECTIONS TO EQUIPMENT PER MANUFACTURER'S RECOMMENDATIONS. ELECTRICAL REQUIREMENTS INCLUDING CIRCUIT BREAKER SIZES, FUSE SIZES, AND CONDUCTOR SIZES ARE BASED ON CHARACTERISTICS INDICATED AND MAY VARY DEPENDING ON EQUIPMENT PROVIDED. COORDINATE ALL ELECTRICAL REQUIREMENTS WITH EQUIPMENT SUPPLIED AND REVISE IF NECESSARY.
- RECEPTACLES AND OUTLETS ARE SHOWN IN APPROXIMATE LOCATIONS. COORDINATE FINAL LOCATIONS WITH OWNER. LOCATE RECEPTACLES AND OUTLETS WITHIN TEN FEET OF LOCATIONS SHOWN AT NO ADDITIONAL COST TO OWNER.
- EDISON CIRCUITS ARE NOT PERMITTED FOR 120/208V BRANCH CIRCUITS INSTALLED UNDER THIS PROJECT.
- CIRCUIT DESIGNATIONS AREA NOT INDICATED FOR BRANCH CIRCUITS SHOWN ON THIS SHEET. FIELD DETERMINE CIRCUITS APPROPRIATE AND AVAILABLE. RECORD INSTALLED CIRCUIT DESIGNATIONS ON AS-BUILT DOCUMENTS.

SYMBOL LEGEND

-  PANELBOARD
-  DRY TYPE TRANSFORMER
-  NEMA 5-20R DUPLEX RECEPTACLE, 18" AFF TO CENTER OF OUTLET UNLESS NOTED OTHERWISE.  
GFI = GROUND FAULT INTERRUPTER TYPE  
AC = 6" ABOVE COUNTER
-  NEMA 5-20R DUPLEX RECEPTACLE, 36" AFF TO CENTER OF OUTLET UNLESS NOTED OTHERWISE.
-  NEMA 6-30R RECEPTACLE, 39" AFF TO CENTER OF OUTLET UNLESS NOTED OTHERWISE.
-  BRANCH CIRCUIT CONDUCTORS, 2" MINIMUM UNLESS NOTED OTHERWISE, #12 AWG MINIMUM UNLESS NOTED OTHERWISE.
-  PHASE CONDUCTOR(S)
-  NEUTRAL CONDUCTOR(S)
-  GROUND CONDUCTOR
-  ARROWHEAD DENOTES HOMERUN TO EQUIPMENT AS DESIGNATED.  
p.c. = PARTIAL CIRCUIT

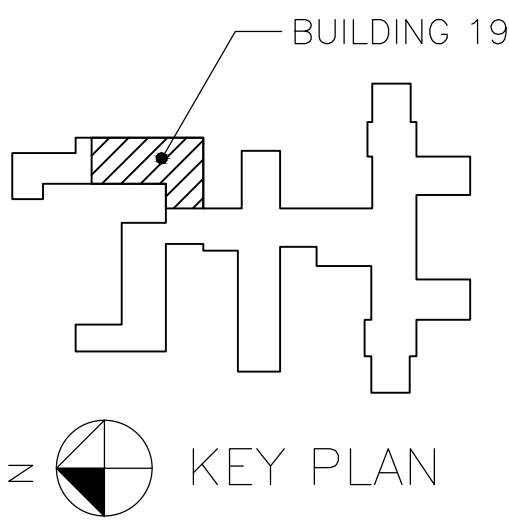


1 RECEPTACLE PLAN - BASEMENT  
E-300 SCALE: 1/8"=1'-0"



SCALE IN FEET

(NO WORK IN BASEMENT)



2025 P.C. CERTIFICATE OF AUTHORIZATION: CA1373  
EXPIRATION DATE: 30 JUNE 2013  
C:\Documents and Settings\hnoothoopek\My Documents\VAH16\Desktop\Bldg. 19  
Date: 07/11/2012 11:15:16am

Revisions:	Date

CONTRACTOR:	ARCHITECT/ENGINEERS:			
CONSTRUCTION CONTRACTOR:	ARCHITECT:	MECHANICAL ENGINEER:	ELECTRICAL ENGINEER:	
HGL CONSTRUCTION 2000 S. DOUGLAS BOULEVARD MIDWEST CITY, OKLAHOMA 73130 405-737-7588 CONTACT: EDDIE COX	PDG Architects 333 12th Ave SE Norman, Oklahoma 73071 OFFICE PHONE: 405-360-1102 OFFICE FAX: 405-360-0055 CONTACT: DONALD FRICK	ZRHD, P.C. Engineers 1318 N. Robinson Oklahoma City, Oklahoma 73103 405-942-8475 CONTACT: John Parks	ZRHD, P.C. Engineers 1318 N. Robinson Oklahoma City, Oklahoma 73103 405-942-8475 CONTACT: Wayne Wright	

Drawing Title
RECEPTACLE PLAN BASEMENT
Approved: Project Director

Project Title
RENOVATION BUILDING 19 VA MEDICAL CENTER

Location
VAMC, OKLAHOMA CITY, OK
Date
5/11/2012

Checked
WHW

Drawn
MDR

Project Number
635-11-303
Building Number
19
Drawing Number
E-300
Dwg. 60 of 71

Office of  
Construction  
and Facilities  
Management

