

C:\Documents and Settings\mrookhoop\My Documents\VA\16\Desktop\Bldg. 19  
2000 S. DOUGLAS BOULEVARD  
MIDWEST CITY, OKLAHOMA 73130  
405-737-7588  
CONTACT: EDDIE COX

VA FORM 08-6231

CONTRACTOR:

CONSTRUCTION CONTRACTOR:

HGL CONSTRUCTION  
2000 S. DOUGLAS BOULEVARD  
MIDWEST CITY, OKLAHOMA 73130  
405-737-7588  
CONTACT: EDDIE COX

ARCHITECT/ENGINEERS:

ARCHITECT:

PDG Architects  
333 12th Ave. SE  
Norman, Oklahoma 73071  
OFFICE PHONE: 405-360-1102  
OFFICE FAX: 405-360-0055  
CONTACT: DONALD FRICK

MECHANICAL ENGINEER:

ZRHD, P.C. Engineers  
1318 N. Robinson  
Oklahoma City, Oklahoma 73103  
405-942-8475  
CONTACT: John Parks

ELECTRICAL ENGINEER:

ZRHD, P.C. Engineers  
1318 N. Robinson  
Oklahoma City, Oklahoma 73103  
405-942-8475  
CONTACT: Wayne Wright

Drawing Title

POWER PLAN  
THIRD FLOOR

Approved: Project Director

Project Title

RENOVATION BUILDING 19 VA  
MEDICAL CENTER

Location

VAMC, OKLAHOMA CITY, OK

Date

5/11/2012

Checked

WHW

Drawn

SWW

Project Number

635-11-303

Building Number

19

Drawing Number

E-203

Dwg. 59 of 71

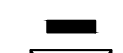

Office of  
Construction  
and Facilities  
Management

Department of  
Veterans Affairs

GENERAL NOTES

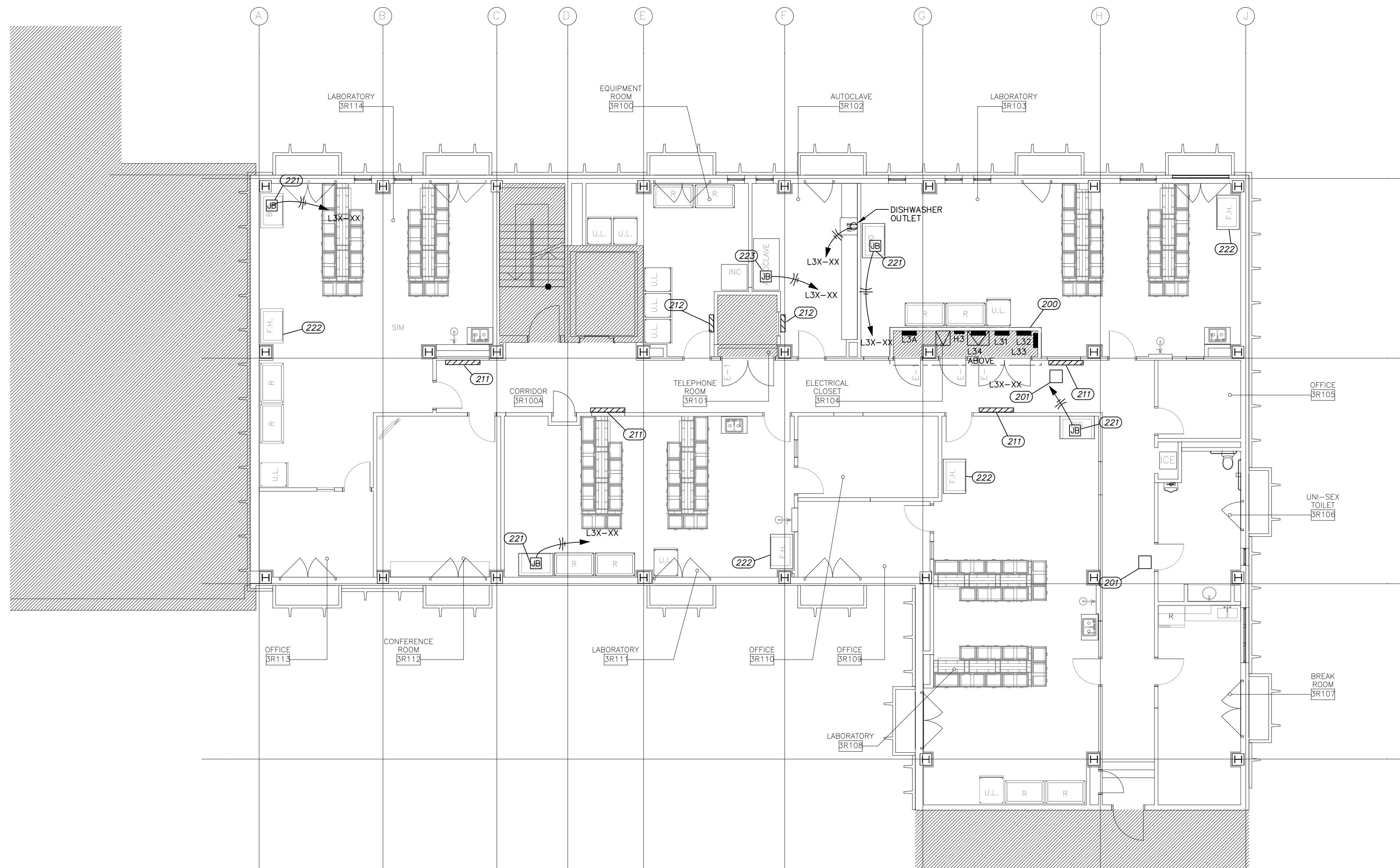
- ALL WORK SHOWN ON THIS SHEET SHALL BE PERFORMED IN ACCORDANCE WITH NFPA 70-2002, NATIONAL ELECTRICAL CODE.
- LAYOUTS SHOWN ON THIS SHEET ARE DIAGRAMMATIC AND DO NOT NECESSARILY DEPICT EXACT CONFIGURATIONS. EQUIPMENT AND DEVICE LOCATIONS SHALL BE AS NEAR AS PRACTICABLE TO LOCATIONS SHOWN EXCEPT WHERE SPECIFIED, NOTED, OR INDICATED OTHERWISE.
- PROVIDE ALL POWER AND CONNECTIONS TO EQUIPMENT PER MANUFACTURER'S RECOMMENDATIONS. ELECTRICAL REQUIREMENTS INCLUDING CIRCUIT BREAKER SIZES, FUSE SIZES, AND CONDUCTOR SIZES ARE BASED ON CHARACTERISTICS INDICATED AND MAY VARY DEPENDING ON EQUIPMENT PROVIDED. COORDINATE ALL ELECTRICAL REQUIREMENTS WITH EQUIPMENT SUPPLIED AND REVISE IF NECESSARY.
- RECEPTACLES AND OUTLETS ARE SHOWN IN APPROXIMATE LOCATIONS. COORDINATE FINAL LOCATIONS WITH OWNER. LOCATE RECEPTACLES AND OUTLETS WITHIN TEN FEET OF LOCATIONS SHOWN AT NO ADDITIONAL COST TO OWNER.

SYMBOL LEGEND

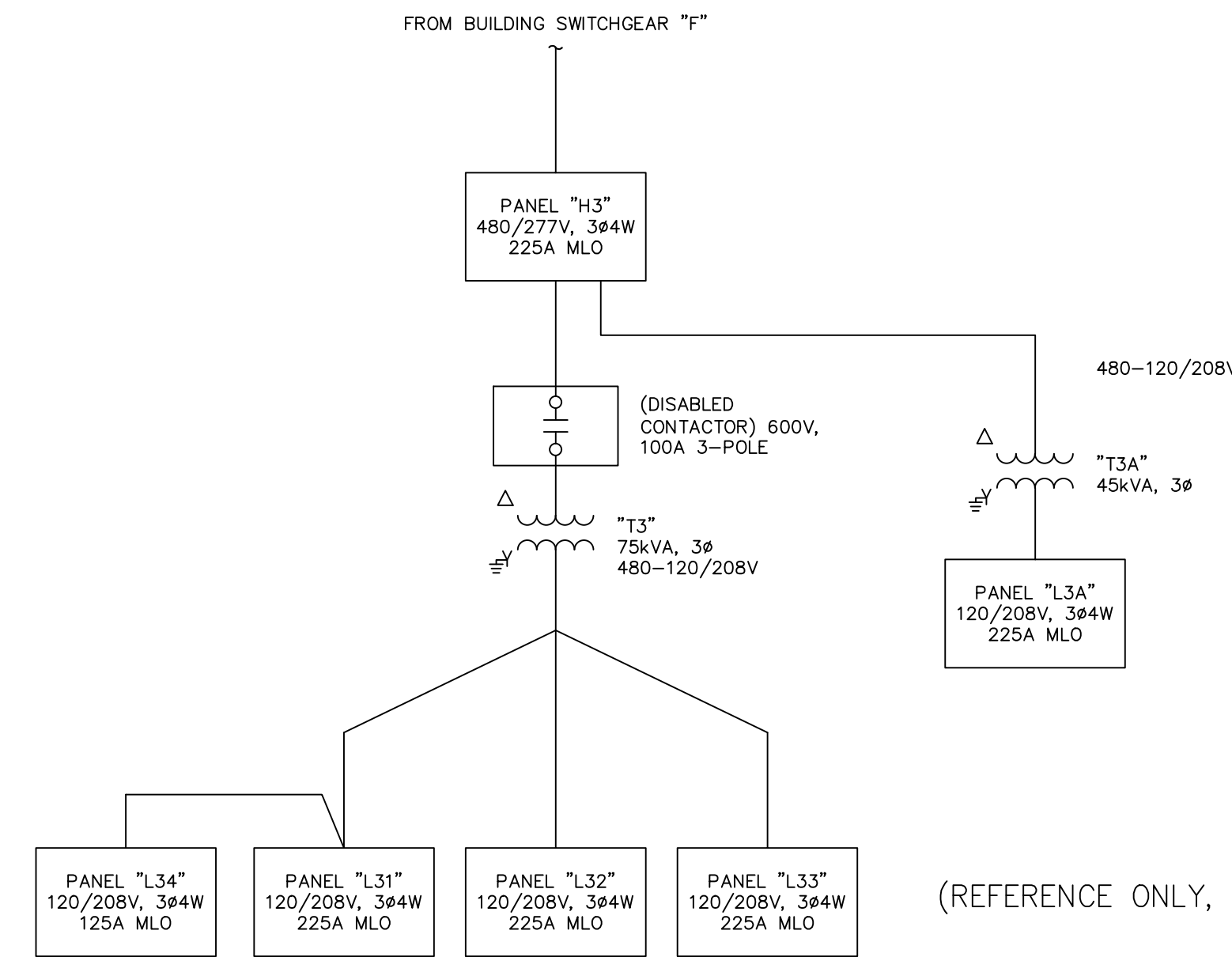
-  PANELBOARD  
 DRY TYPE TRANSFORMER

KEYED NOTES THIS SHEET

- (200) EXISTING PANELBOARDS AND TRANSFORMERS TO REMAIN. CONNECT BRANCH CIRCUITS TO EXISTING CIRCUIT BREAKERS, REF. SCHEDULES ON SHEET E-600. REVISE DIRECTORIES ACCORDINGLY.
- (207) FIRE DAMPER ABOVE CEILING. PROVIDE POWER AND FIRE ALARM INTERLOCK. COORDINATE EXACT REQUIREMENTS WITH ALL TRADES AND SYSTEMS.
- (217) NEMA 1 LABORATORY WIREWAY ABOVE CEILING, 6"x6"x48" LONG. ROUTE ALL 120/208V BRANCH CIRCUITS IN ASSOCIATED LABORATORY THROUGH THIS WIREWAY.
- (212) NEMA 1 EQUIPMENT ROOM WIREWAY ABOVE CEILING, 6"x6"x24" LONG. ROUTE ALL 120/208V BRANCH CIRCUITS IN ASSOCIATED EQUIPMENT ROOM THROUGH THIS WIREWAY.
- (221) CONNECTION BOX FOR BIOSAFETY CABINET. PROVIDE ALL CONNECTIONS AS RECOMMENDED BY THE MANUFACTURER.
- (222) FUME HOOD CONNECTIONS AND BRANCH CIRCUIT BY OTHERS.
- (223) AUTOCLAVE CONTROL POWER CONNECTION. COORDINATE EXACT REQUIREMENTS WITH AUTOCLAVE SUPPLIER.



1 POWER PLAN - THIRD FLOOR  
E-203 SCALE: 1/8"=1'-0"  
8' 4' 0 8'  
SCALE IN FEET



1 PARTIAL SINGLE-LINE DIAGRAM  
E-204 SCALE: NONE

(REFERENCE ONLY, "EMERGENCY" PANELS NOT SHOWN)

