

 PANELBOARD

 DRY TYPE TRANSFORMER

200 EXISTING PANELBOARDS AND TRANSFORMERS TO REMAIN. CONNECT BRANCH CIRCUITS TO EXISTING CIRCUIT BREAKERS, REFR. SCHEDULES ON SHEET E-600. REUSE DIRECTORIES ACCORDINGLY.

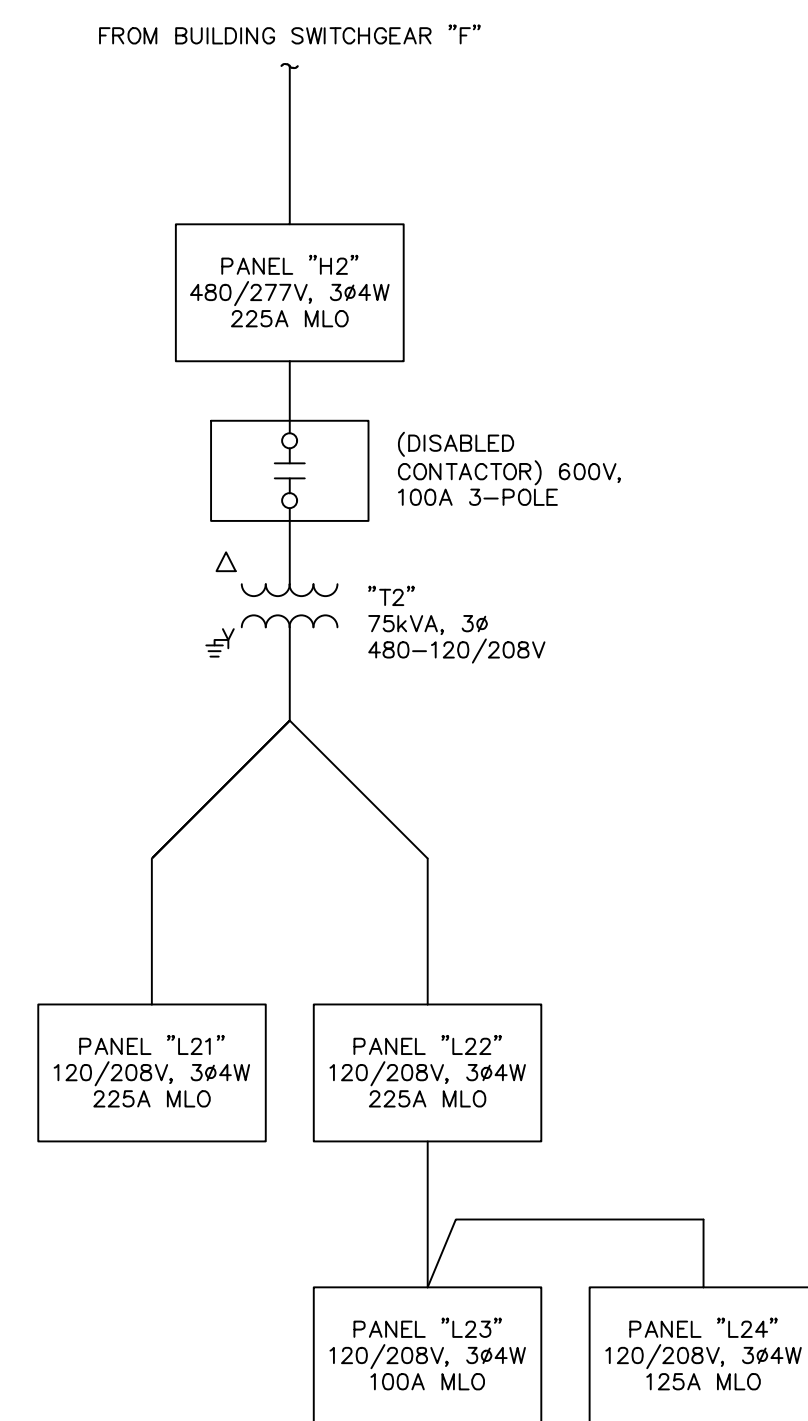
201 FIRE DAMPER ABOVE CEILING. PROVIDE POWER AND FIRE ALARM INTERLOCK. COORDINATE EXACT REQUIREMENTS WITH ALL TRADES AND SYSTEMS.

211 NEMA 1 LABORATORY WIREWAY ABOVE CEILING. 6"x6"x48" LONG. ROUTE ALL 120/208V BRANCH CIRCUITS IN ASSOCIATED LABORATORY THROUGH THIS WIREWAY.

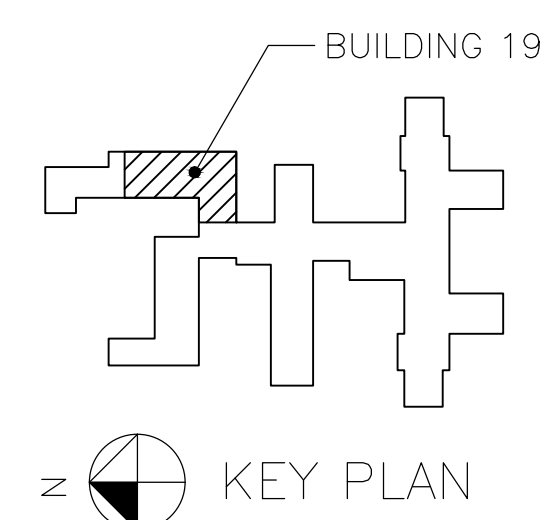
212 NEMA 1 EQUIPMENT ROOM WIREWAY ABOVE CEILING. 6"x6"x24" LONG. ROUTE ALL 120/208V BRANCH CIRCUITS IN ASSOCIATED EQUIPMENT ROOM THROUGH THIS WIREWAY.

221 CONNECTION BOX FOR BIOSECURITY CABINET. PROVIDE ALL CONNECTIONS AS RECOMMENDED BY THE MANUFACTURER.

222 FUME HOOD CONNECTIONS AND BRANCH CIRCUIT BY OTHERS.



2 PARTIAL SINGLE-LINE DIAGRAM
E-203 SCALE: NONE



Drawing Title POWER PLAN SECOND FLOOR	Project Title RENOVATION BUILDING 19 VA MEDICAL CENTER			Project Number 635-11-303	
				Building Number 19	
Approved: Project Director	Location VAMC, OKLAHOMA CITY, OK			Drawing Number	
	Date 5/11/2012	Checked WHW	Drawn SWW	E-202 Dwg. 58 of 71	

 Department of
Veterans Affairs