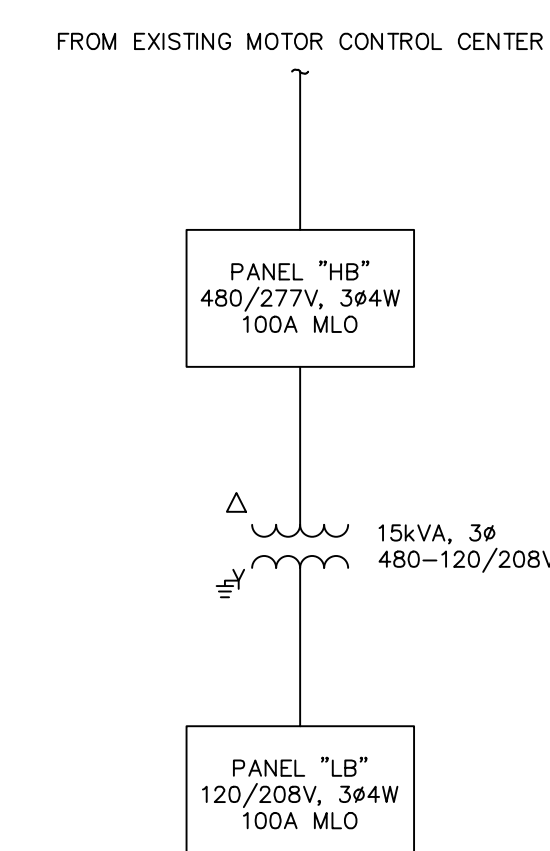
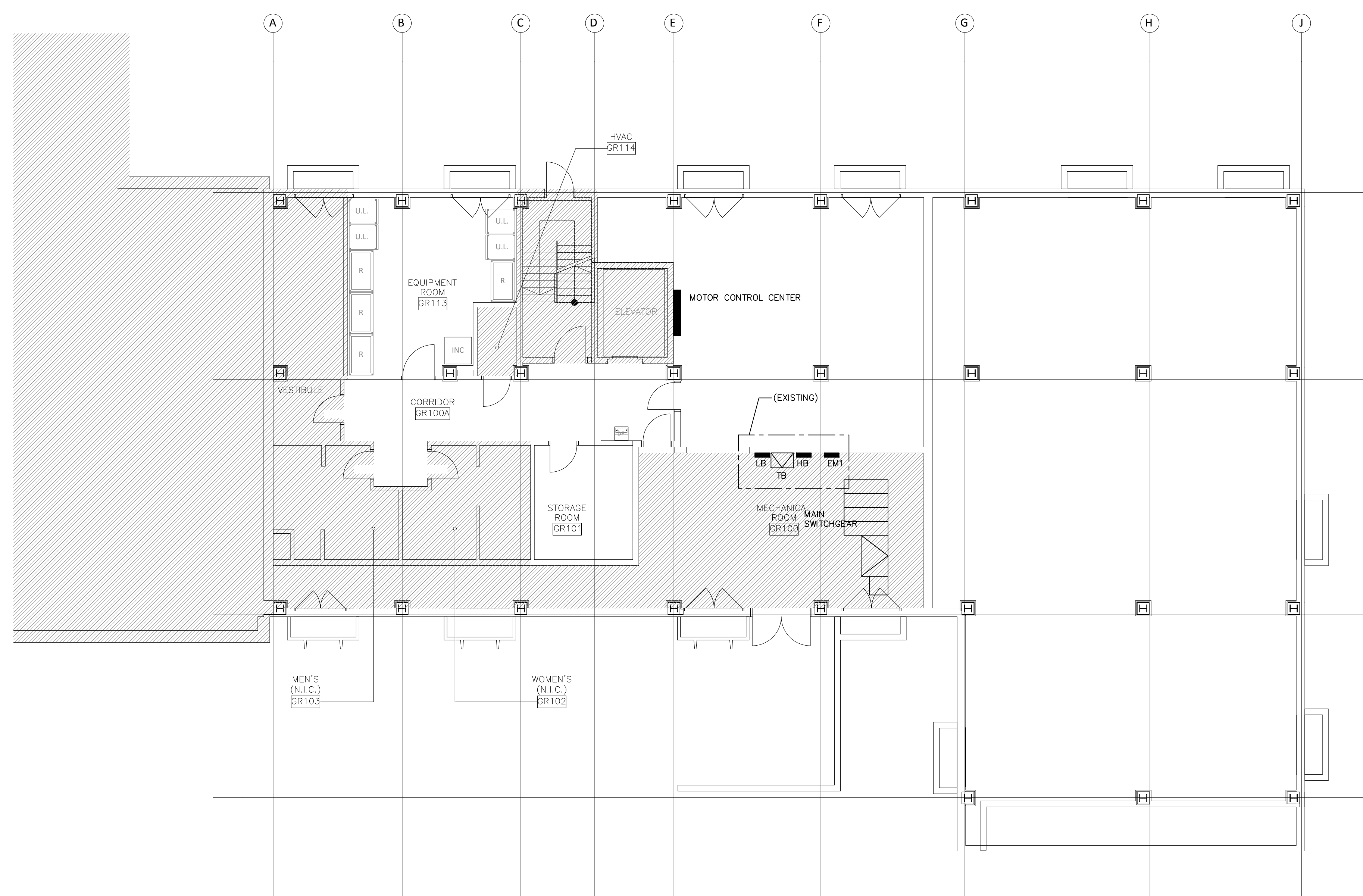


 PANELBOARD

 DRY TYPE TRANSFORMER



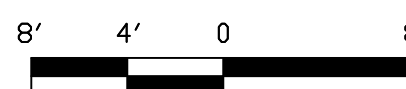
(REFERENCE ONLY, "EMERGENCY" PANELS NOT SHOWN)

2 PARTIAL SINGLE-LINE DIAGRAM
E-201 SCALE: NONE

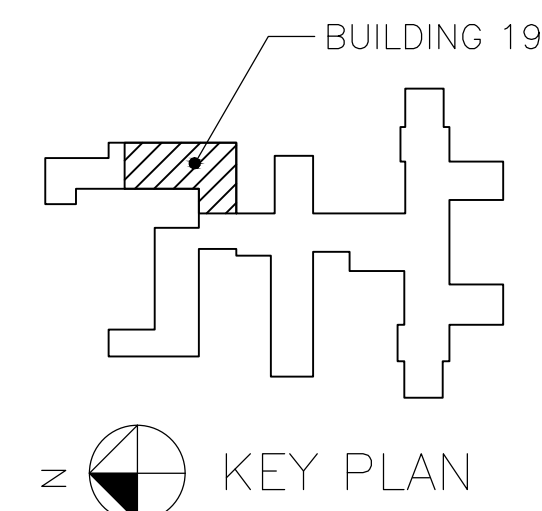


1 POWER PLAN - BASEMENT
E-200 SCALE: 1/8"=1'-0"


(NO WORK IN BASEMENT)



SCALE IN FEET

[illegible]

CONTRACTOR:		ARCHITECT/ENGINEERS:	
<u>CONSTRUCTION CONTRACTOR:</u> HCL CONSTRUCTION 2000 S. DOUGLAS BOULEVARD MIDWIT CITY, OKLAHOMA 73130 405-737-7588 CONTACT: EDDIE COX		<u>ARCHITECT:</u> PDG Architects 333 12th Ave SE Norman, Oklahoma 73071 OFFICE PHONE: 405-360-1102 OFFICE FAX: 405-360-0055 CONTACT: DONALD FRICK	
		<u>MECHANICAL ENGINEER:</u> ZRHD, P.C. Engineers 1318 N. Robinson Oklahoma City, Oklahoma 73103 405-942-8475 CONTACT: John Parks	
		<u>ELECTRICAL ENGINEER:</u> ZRHD, P.C. Engineers 1318 N. Robinson Oklahoma City, Oklahoma 73103 405-942-8475 CONTACT: Wayne Wright	

Drawing Title POWER PLAN BASEMENT	Project Title RENOVATION BUILDING 19 VA MEDICAL CENTER			Project Number 635-11-303		Office of Construction and Facilities Management
				Building Number 19		
Approved: Project Director	Location VAMC, OKLAHOMA CITY, OK			Drawing Number E-200		 Department of Veterans Affairs
	Date 5/11/2012	Checked WHW	Drawn SWW	Dwg. 56 of 71		