

GENERAL NOTES:

- ## KEYED NOTES

- ## ABBREVIATIONS

LEGEND

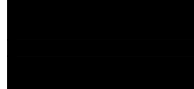
100% CONSTRUCTION DOCUMENTS

CONSULTANTS:

ARSENIO ORTEGA, P.E.
CONSULTING ENGINEER
5 Third Street, Suite 716
San Francisco, CA 94103
(415) 546-0490 tel -0491 fax

A circular professional seal for a Licensed Architect in the State of California. The outer ring contains the text "LICENSED ARCHITECT" at the top and "STATE OF CALIFORNIA" at the bottom. The center of the seal contains the name "PAUL W. POWERS", the license number "C-29713", and the renewal date "RENEWAL DATE: 2/28/2018".

ARCHITECT/ENGINEERS:



ENGINEERS ARCHITECTS

6700 KOLL CENTER PARKWAY SUITE 125
PLEASANTON CALIFORNIA 94566

TEL 925.223.8217 www.thekpagroup.com

THE KPA GROUP

©THE KPA GROUP 2017
KPA Project No. 625.00

Drawing Title	<h1>SITE UTILITIES PLAN</h1>
Approved: Project Director	
-	
-	
VAPAHCS PLANNING AND ENGINEERING	

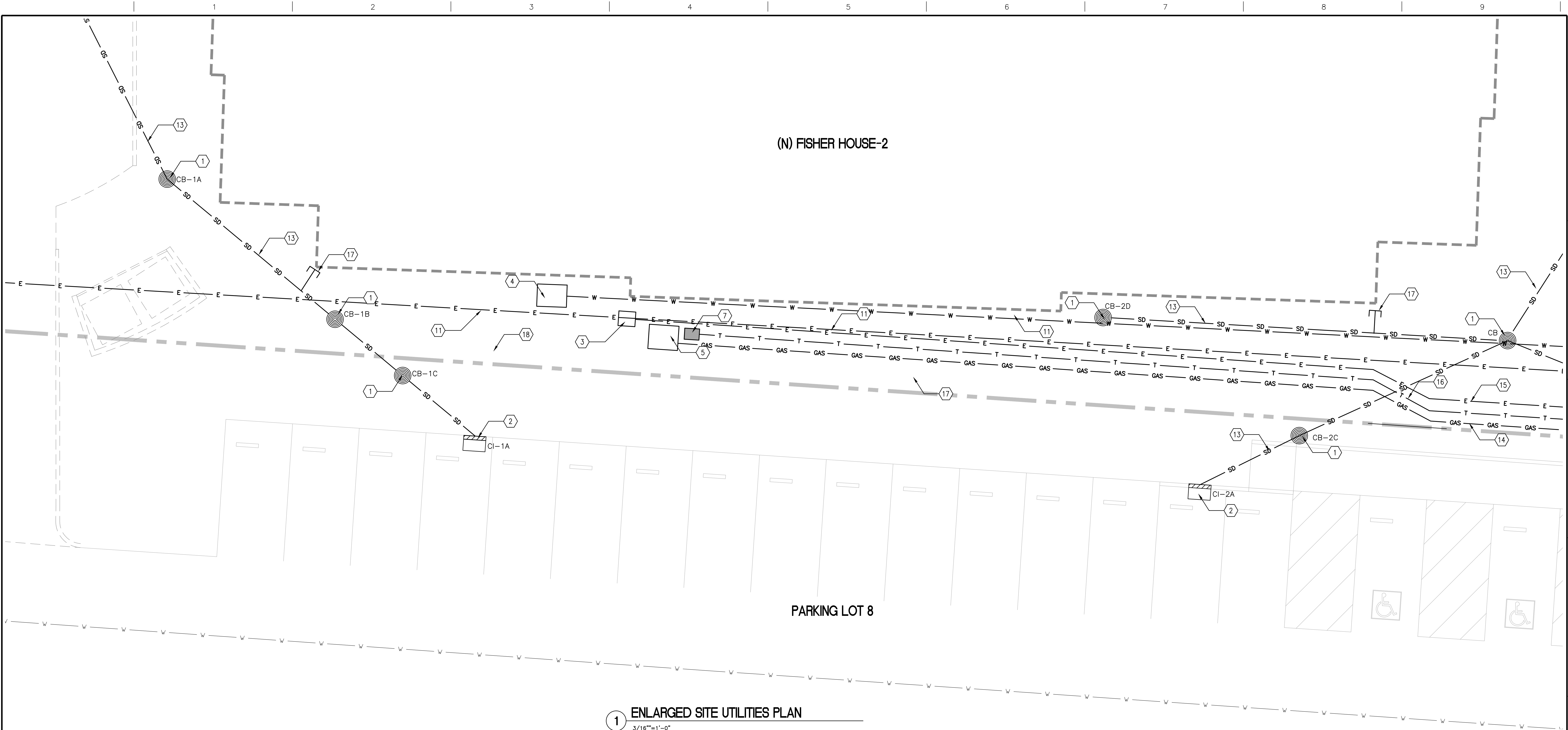
Project Title		
FISHER HOUSE #2 SITE PREPARATION UTILITIES AND LANDSCAPING		
Location 3801 MIRANDA AVENUE, PALO ALTO, CA		
Date 05/01/2017	Checked PWP	Drawn KPA TEAM

Project Number 640-16-112
Building Number -
Drawing Number CU101
Dwg. of

Office of
Construction
and Facilities
Management

VA PAHCS
Veterans Affairs Palo Alto Health Care System

three inches = one foot
one and one half inches = one foot
one inch = one foot
three quarters inch = one foot
one half inch = one foot
three eighths inch = one foot
one quarter inch = one foot
one eighth inch = one foot
one eighth inch = one foot



1 ENLARGED SITE UTILITIES PLAN
3/16"=1'-0"

KEYED NOTES

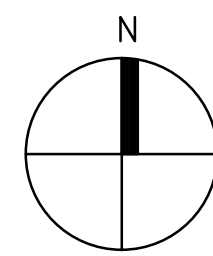
- | | |
|--|---|
| 1 NEW CATCH BASIN | 12 NEW SANITARY SEWER LINE (4") |
| 2 NEW STORM INLET-CURB | 13 NEW STORM DRAIN LINE (6"/8") |
| 3 NEW ELEC HANDHOLE | 14 NEW GAS LINE |
| 4 NEW WATER SHUT OFF | 15 NEW ELECTRICAL POWER |
| 5 NEW GAS SERVICE SHUT OFF | 16 NEW COMMUNICATION LINE |
| 6 NOT USED | 17 COORDINATE LOCATION OF ROOF
DOWNSPOUTS WITH LOCATION
OF NEW FISHER HOUSE |
| 7 COMMUNICATION HAND HOLE | |
| 8 ELECTRICAL HAND HOLE | |
| 9 (E) COMMUNICATION HAND HOLE | |
| 10 NEW FIRE HYDRANT AND PIV,
PROVIDE POWER AND CONTROL
CONDUCTORS, SEE DETAIL
5/CU501 | |
| 11 NEW WATER SUPPLY LINE (4") | |

ABBREVIATIONS

AB	ABANDONED	RSR	RISER
AL	AREA LIGHT	SD	STORM DRAIN
BFP	BACK FLOW PREVENTER	SDCB	STORM DRAIN CATCH BASIN
BX	BOX	SDI	STORM DRAIN INLET
CB	CATCH BASIN	SL	STREET LIGHT
CI	CURB INLET	SLP	STREET LIGHT POLE
CO	CLEAN OUT	SS	SANITARY SEWER
COND	CONDUIT	SSCO	SANITARY SEWER CLEAN OUT
CP	CONTROL POINT	SSV	SANITARY SEWER VALVE
E	ELECTRIC	T	TELEPHONE
EBX	ELECTRICAL BOX	TOP	TOP OF PIPE
EC	ELECTRICAL CONDUIT	TON	TOP OF VALVE NUT
DS	DOWN SPOUT	WBX	WATER BOX
DW	DOMESTIC WATER	WV	WATER VALVE
FDC	FIRE DEPARTMENT CONNECTION	UN	UNKNOWN UTILITY
FH	FIRE HYDRANT	UTO	UNABLE TO OPEN
FW	FIRE WATER	VLT	VAULT
HB	HOSE BIB		
G	GAS		
IRR BX	IRRIGATION BOX		
IRR	IRRIGATION		
LS	LOST SIGNAL		
MH	MANHOLE		
NL	NOT LOCATED		
PIV	POST INDICATOR VALVE		

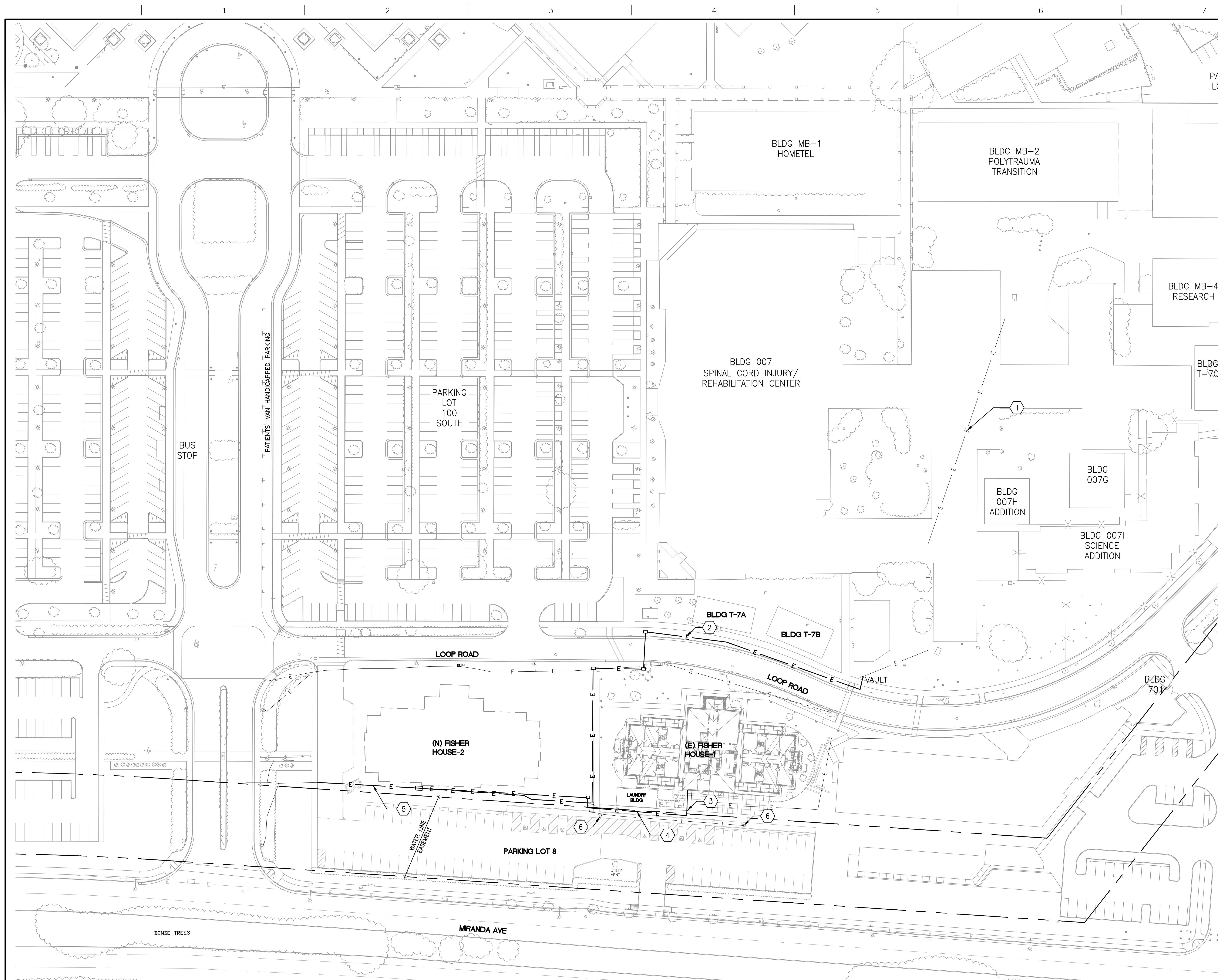
LEGEND

- | | |
|--|------------------------------------|
| | EXISTING UTILITY AND MANHOLE LINES |
| | NEW UTILITY AND MANHOLE LINES |
| | CATCH BASIN |
| | NEW CURB INLET - CI |
| | NEW CURB INLET - CI |
| | FUTURE ROOF DRAIN CONNECTION |



100% CONSTRUCTION DOCUMENTS

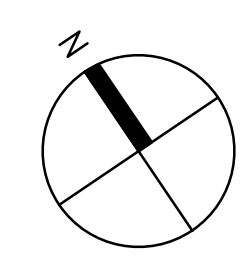
Revisions:	Date:	CONSULTANTS: ARSENIO ORTEGA, P.E. CONSULTING ENGINEER 5 Third Street, Suite 716 San Francisco, CA 94103 (415) 546-0490 tel -0491 fax	Stamp and Signature 	ARCHITECT/ENGINEERS: ENGINEERS ARCHITECTS 6700 KOLL CENTER PARKWAY SUITE 125 PLEASANTON, CALIFORNIA 94566 Tel 925.223.8217 www.thekpagroup.com ©THE KPA GROUP 2017 KPA Project No. 625.00	Drawing Title ENLARGED SITE UTILITIES PLAN Approved Project Director - VAPAHCS PLANNING AND ENGINEERING	Project Title FISHER HOUSE #2 SITE PREPARATION UTILITIES AND LANDSCAPING Location 3801 MIRANDA AVENUE, PALO ALTO, CA Date 05/01/2017 Checked PWP Drawn KPA TEAM	Project Number 640-16-112 Building Number - Drawing Number CU102 Dwg. of	Office of Construction and Facilities Management VAPAHCS Veterans Affairs Palo Alto Health Care System
------------	-------	---	-----------------------------	---	---	--	--	---



- ## KEYED NOTES
- | | |
|---|---|
| ① | (E) ELECTRICAL POWER |
| ② | (N) ELECTRICAL LINE |
| ③ | TEMPORARY ELECTRICAL SERVICE TO EXISTING SITE
PEDESTAL FROM PANEL AT FH1 |
| ④ | TEMPORARY ELECTRICAL CONDUCTOR |
| ⑤ | CONNECT TO EXISTING |
| ⑥ | RELOCATE (2) LIGHT POLES AND FOUNDATION |

- LEGEND**
-
- E —— EXISTING ELECTRICAL LINE
- E —— NEW ELECTRICAL LINE

1 SITE ELECTRICAL PLAN
1"=40'-0"

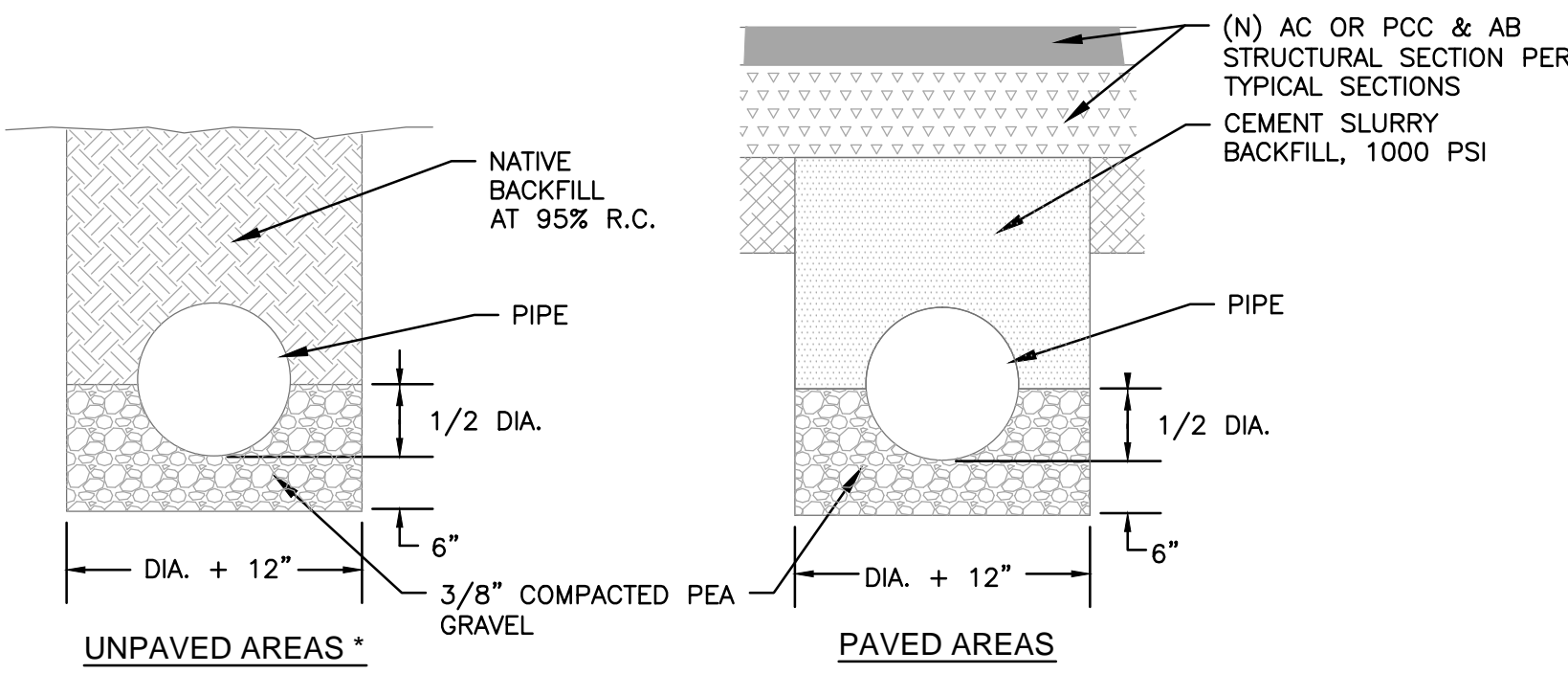


Office of
Construction
and Facilities
Management

VA PAHCS
Veterans Affairs Palo Alto Health Care System

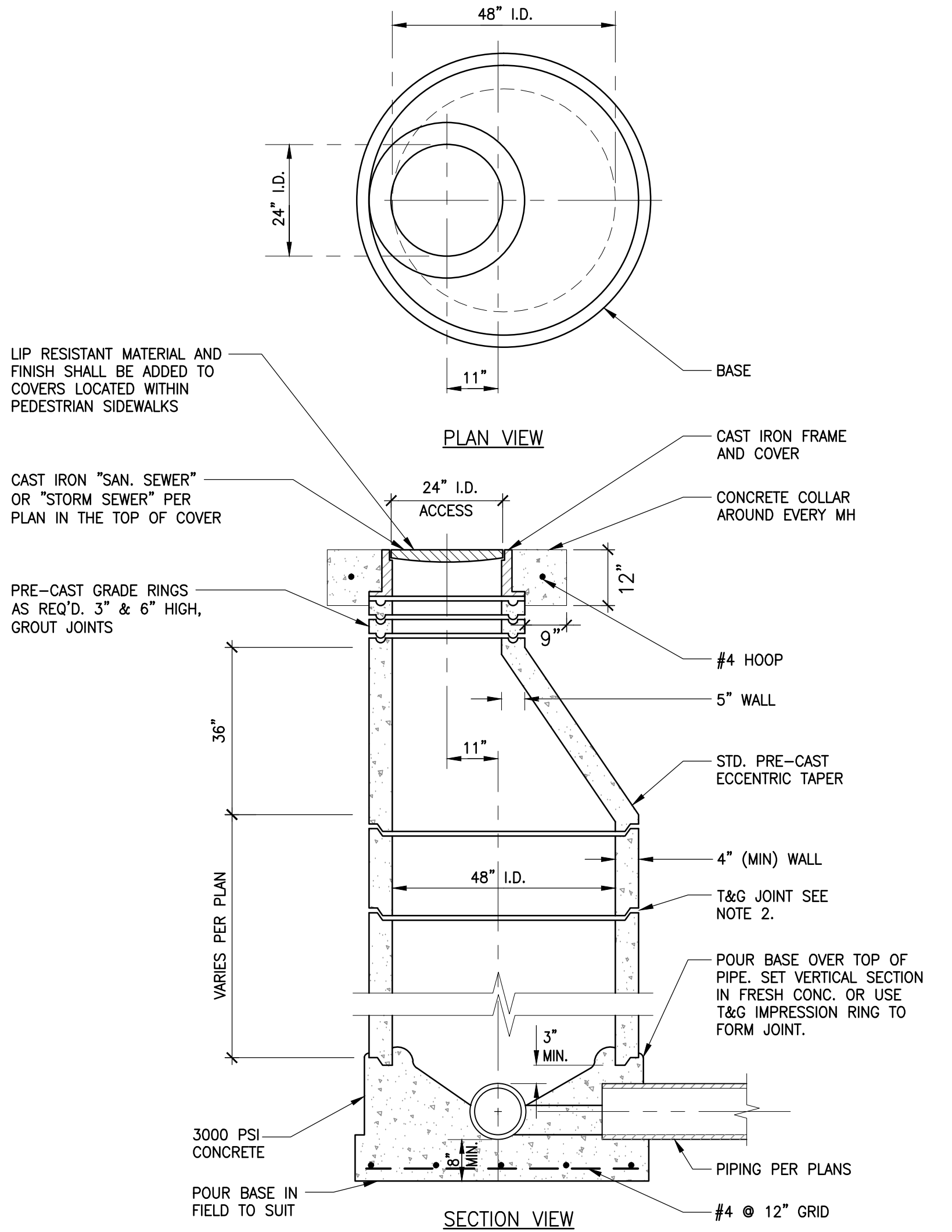
-	-	CONSULTANTS:	<div>ARSENIO ORTEGA, P.E. CONSULTING ENGINEER 5 Third Street, Suite 716 San Francisco, CA 94103 (415) 546-0490 tel -0491 fax</div>	<div><div>LICENSED ARCHITECT PAUL W. POWERS C-29713 EXPIRATION DATE 12/31/2019 STATE OF CALIFORNIA</div></div>	<div>ARCHITECT/ENGINEERS: <div><div><div>KPA</div><div>THE KPA GROUP</div></div><div>ENGINEERS ARCHITECTS 6700 KOLL CENTER PARKWAY SUITE 125 PLEASANTON CALIFORNIA 94566 TEL 925.223.8217 www.thekpagroup.com</div><div>©THE KPA GROUP 2017 KPA Project No. 626.00</div></div></div>	<div><div>Project Title SITE ELECTRICAL PLAN</div><div>Approved: Project Director - VAPAHCS PLANNING AND ENGINEERING</div></div>	<div><div>Project Title FISHER HOUSE #2 SITE PREPARATION UTILITIES AND LANDSCAPING</div><div>Location 3801 MIRANDA AVENUE, PALO ALTO, CA</div><div><div>Date 05/01/2017</div><div>Checked PWP</div><div>Drawn KPA TEAM</div></div></div>	<div><div>Project Number 640-16-112</div><div>Building Number -</div><div>Drawing Number CU105</div><div>Dwg. of</div></div>	<div>Office of Construction and Facilities Management</div> <div><div>VA</div><div>PAHCS</div><div><div>Veterans Affairs</div><div>Palo Alto Health Care System</div></div></div>
-	-								
-	-								
-	-								
-	-								
-	-								
-	-								
Revisions:	Date								

three inches = one foot
one and one half inches = one foot
one inch = one foot
three quarters inch = one foot
one half inch = one foot
three eighths inch = one foot
one quarter inch = one foot
one eighth inch = one foot



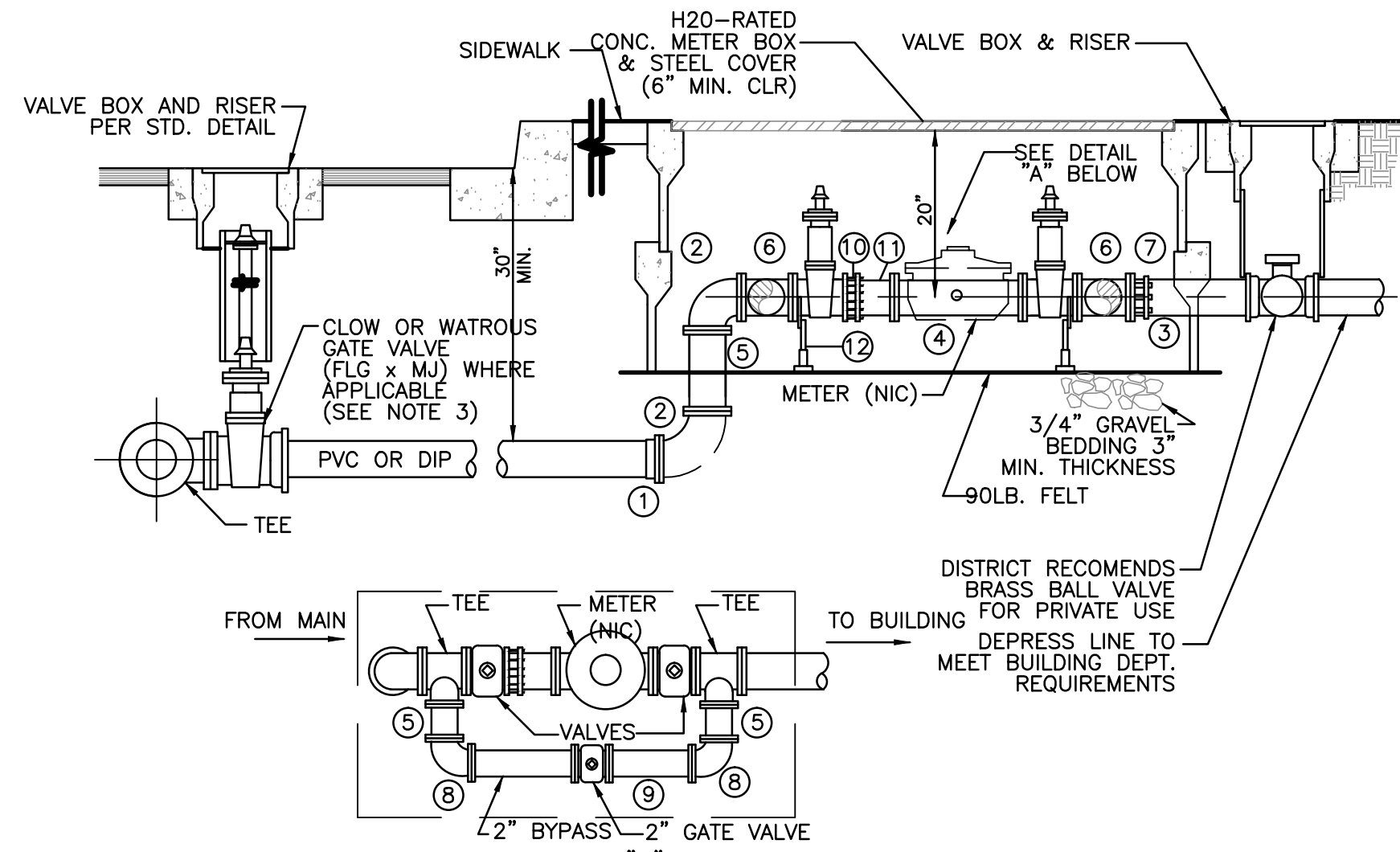
9 STORM DRAIN PIPE TRENCHING DETAILS

NOT TO SCALE



6 MANHOLE 36" DIA PIPE OR LESS

NOT TO SCALE

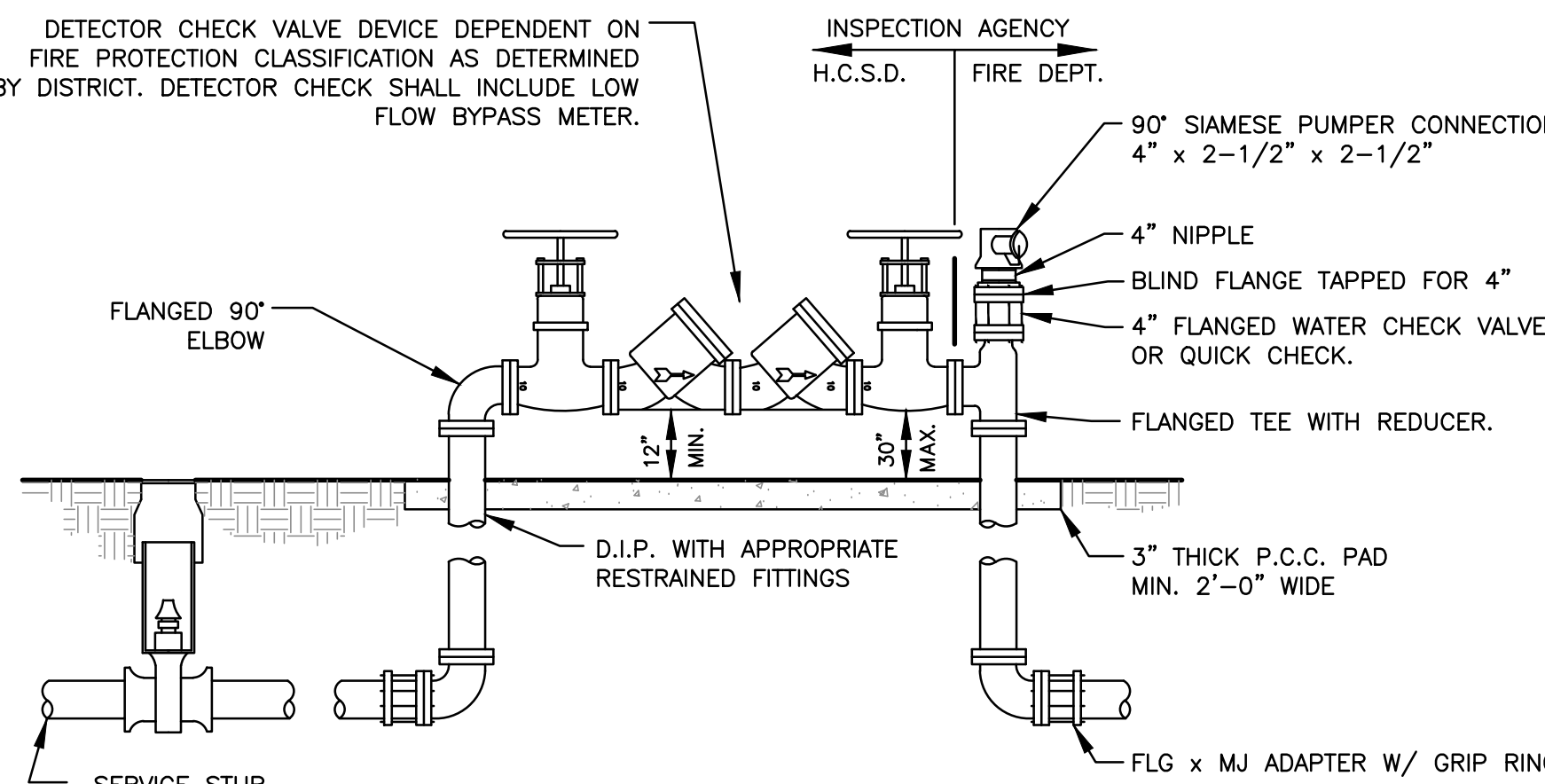


- NOTES:
- 2" SHOWN, AND MAY BE SOLVENT WELD, LARGER SIZES SHALL BE FLANGED.
 - METER BOX MUST BE SET SO THE STEEL COVER IS FLUSH WITH FINISHED SURFACE.
 - SEE GENERAL CONSTRUCTION NOTES.
 - GATE VALVES TO BE RESILIENT SEAT TYPE PER AWWA SPECIFICATION C509
 - SEE ENGINEERS APPROVED LIST FOR TAPPING SLEEVES, METER BOXES AND COVERS.
 - 2" BYPASS TO BE USED ON 2" SERVICES OR LARGER.
 - 2" GATE VALVE BYPASS MAY BE CONSTRUCTED OUTSIDE OF METER BOX IN VALVE BOX AND RISER.

NO.	ITEM
1	FLANGE ADAPTER
2	90° ELB. (D.I.P.)
3	PVC PIPE LENGTH AS REQUIRED.
4	D.I.P. FLANGE BY PLANE END
5	SPCOOL LENGTH AS REQUIRED (D.I.P.)
6	TEE
7	TEE
8	TEE
9	TEE
10	TEE
11	TEE
12	PIPE SUPPORT STAND

6 2" AND LARGER WATER SERVICE INSTALLATION

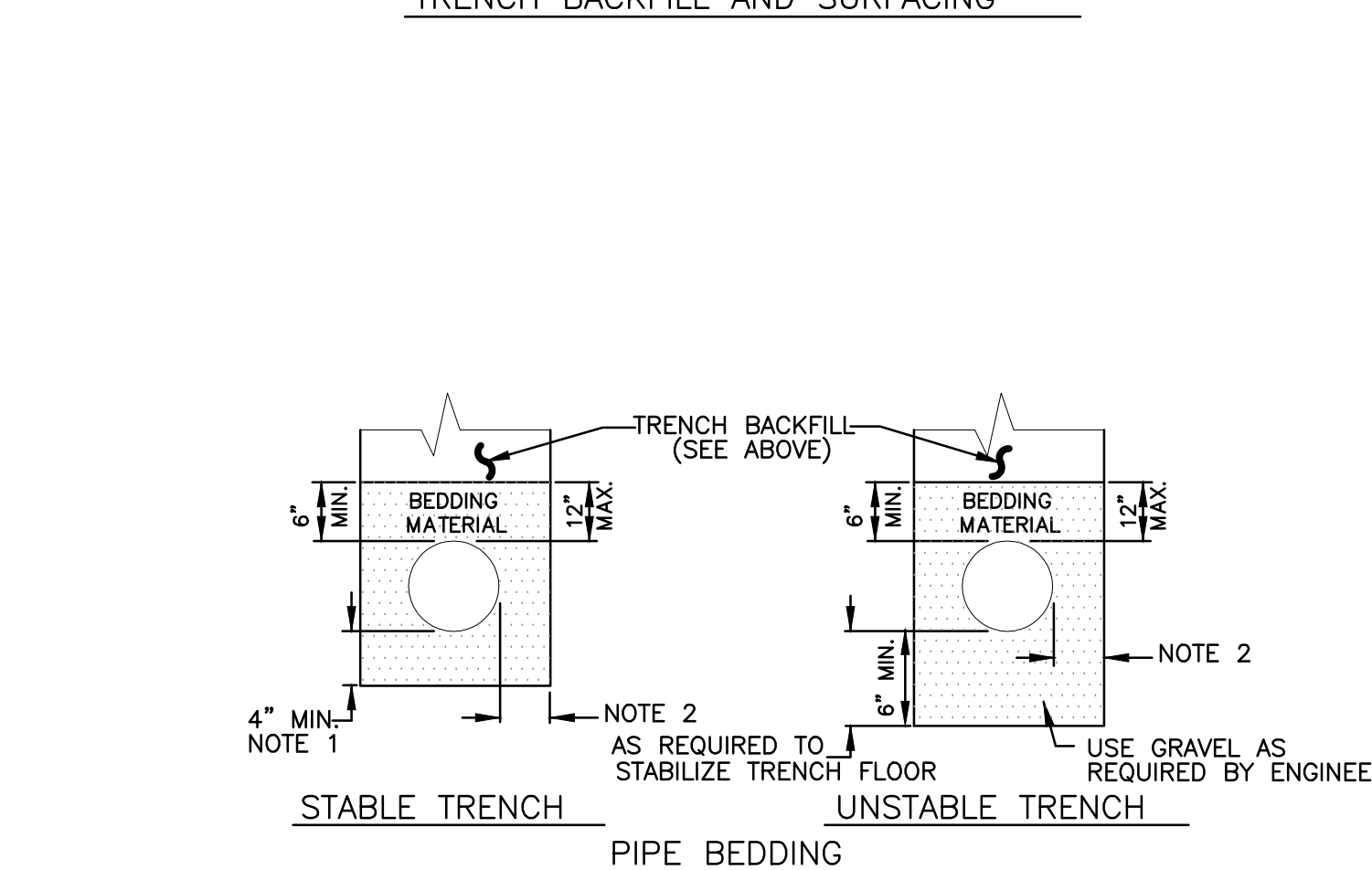
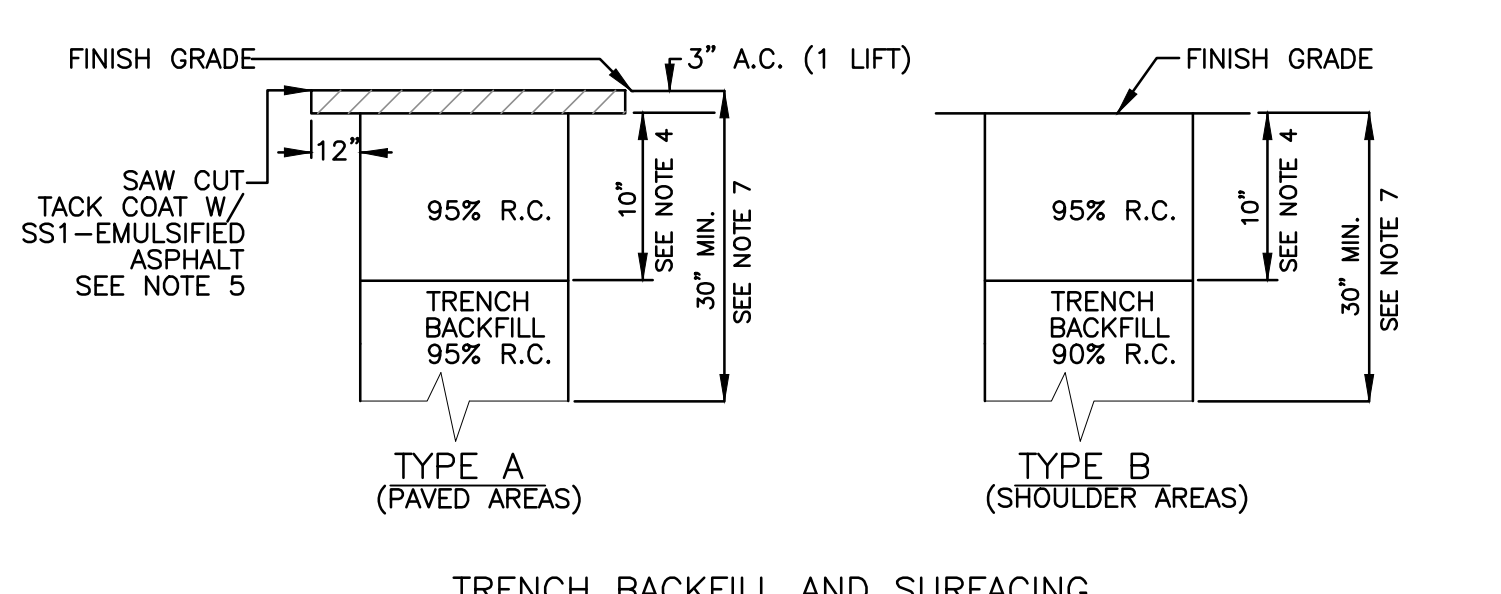
NOT TO SCALE



- NOTES:
- INSTALL FIRE HYDRANT WITHIN 50 FEET OF SIAMESE PUMPER CONNECTION.
 - LOCATION TO BE APPROVED BY DISTRICT AND FIRE DEPARTMENT.
 - ALL ABOVE GROUND VALVES AND POST INDICATOR VALVES SHALL BE EQUIPPED WITH TAMPER SWITCH DEVICES AS APPROVED BY THE FIRE DEPARTMENT AND CHAINED IN THE OPEN POSITION.
 - LANDSCAPING OR OTHER SCREENING AROUND THE DETECTOR CHECK VALVE SHALL BE AS SHOWN ON APPROVED PLANS.
 - ABOVE GROUND INSTALLATION SHOWN; BELOW GROUND INSTALLATION IN VAULT ACCEPTABLE.
 - VAULT SHALL BE MADE WATERTIGHT OR DRAIN TO FREE OUTLET. VERIFY VAULT SIZE TO ACCOMMODATE VALVE OPERATION.
 - THE PUMPER CONNECTION SHOULD BE INSTALLED NOT LESS THAN 18 INCHES AND NOT MORE THAN 5 FEET ABOVE THE ADJACENT ACCESS GRADE LEVEL.

7 DETECTOR CHECK VALVE SINGLE SERVICE

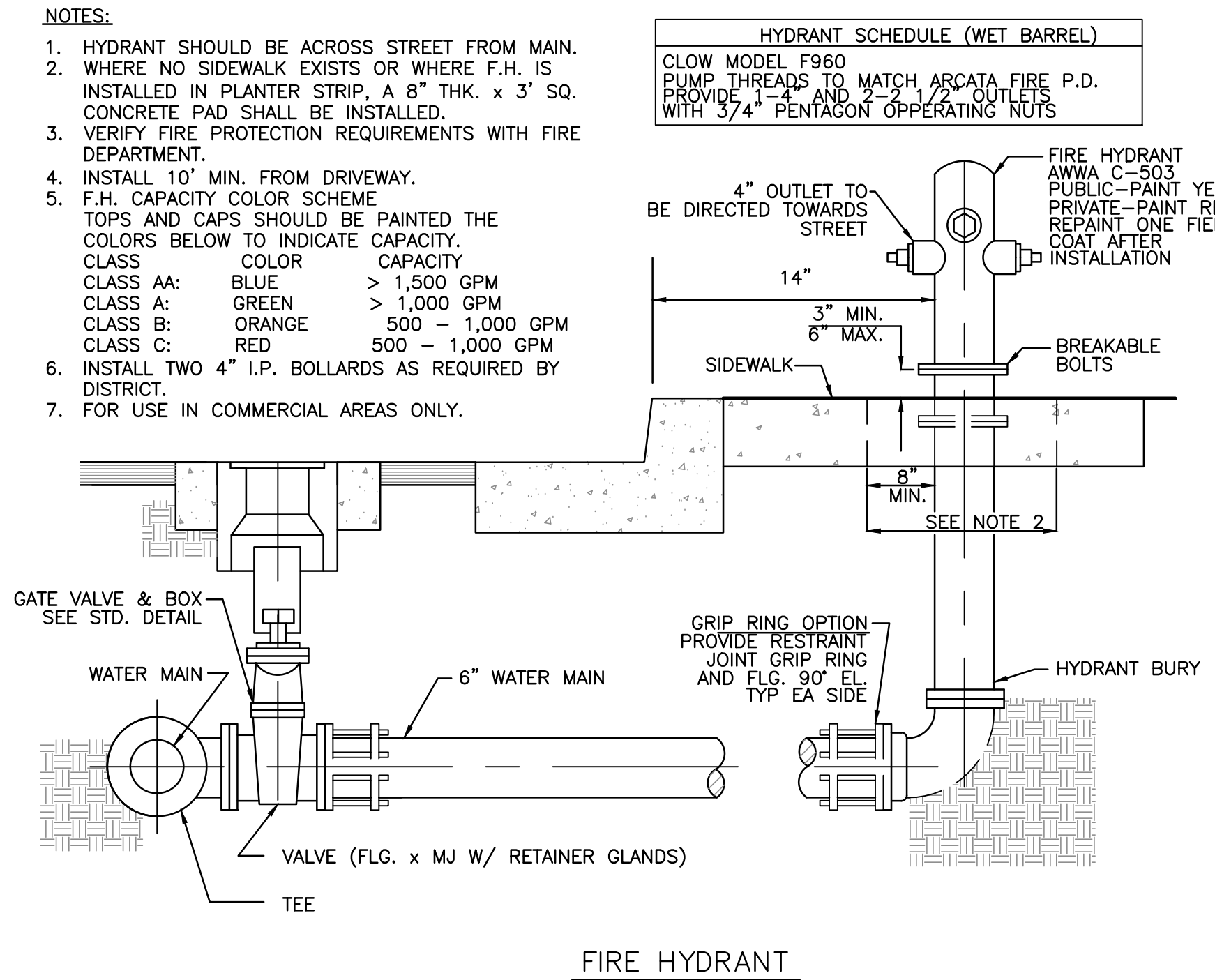
NOT TO SCALE



- NOTES:
- 1/4" PIPE O.D. OR 4" MIN. WHEN EXCAVATION IS IN ROCKY GROUND.
 - PIPE DIAMETER 18" OR LESS; 6" MIN., 9" MAX/PIPE DIA. GREATER THAN 18"; 9" MIN., 12" MAX.
 - RELATIVE COMPACTION DESIGNATED R.C.
 - THE MINIMUM STREET STRUCTURAL SECTION SHALL BE 3" A.C. ON 10" A.B. OR MATCH EXISTING PAVEMENT, WHICHEVER IS THICKER, SPECIFIED ON PLANS, OR REQUIRED BY ENCROACHMENT PERMIT.
 - SAW CUT PAVEMENT 12 INCHES FROM EDGE OF TRENCH AFTER TRENCH IS BACKFILLED PER HUMBOLDT CO. SPEC.
 - MINIMUM PIPE COVER SHALL BE 36" FROM TOP OF PIPE.
 - NEW STREETS AND SHOULDER AREAS UNDER CONSTRUCTION SHALL BE COMPACTED TO 95% RELATIVE COMPACTION FOR A MINIMUM DEPTH OF 30" PER CALTRANS SECTION 19-5.03.
 - INSTALL #12 COPPER COATED TRACER WIRE ON/OVER ALL NON-METALLIC MAINS AND SERVICE LINES.
 - FOR USE IN COMMERCIAL AREAS ONLY.

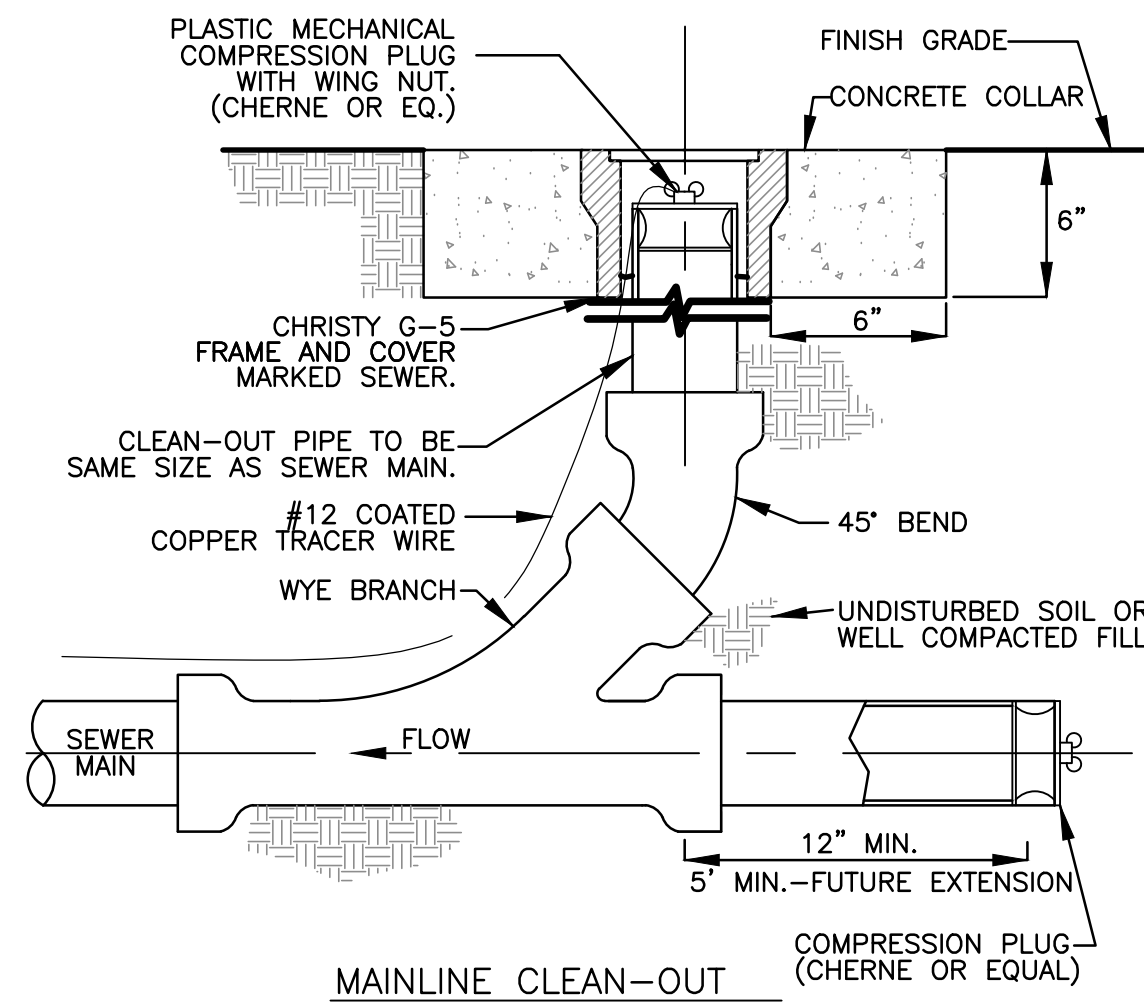
4 WATER AND SEWER STANDARD TRENCH DETAILS

NOT TO SCALE



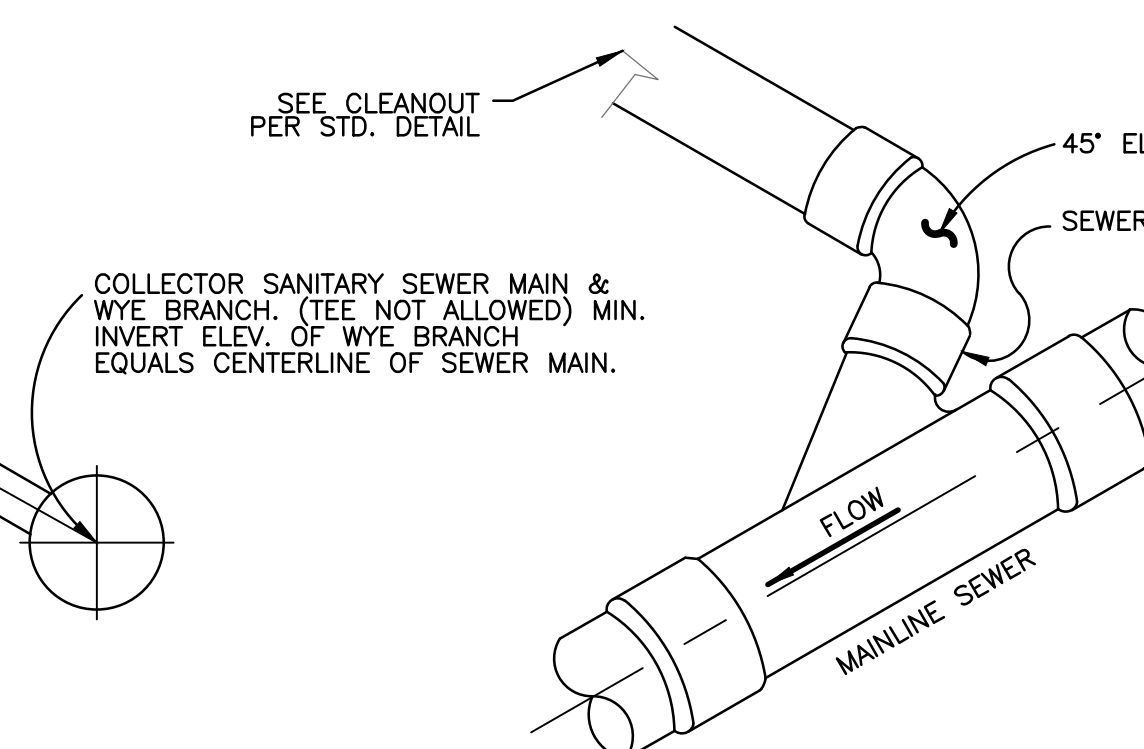
5 FIRE HYDRANT DETAIL

NOT TO SCALE



1 MAINLINE CLEANOUT

NOT TO SCALE

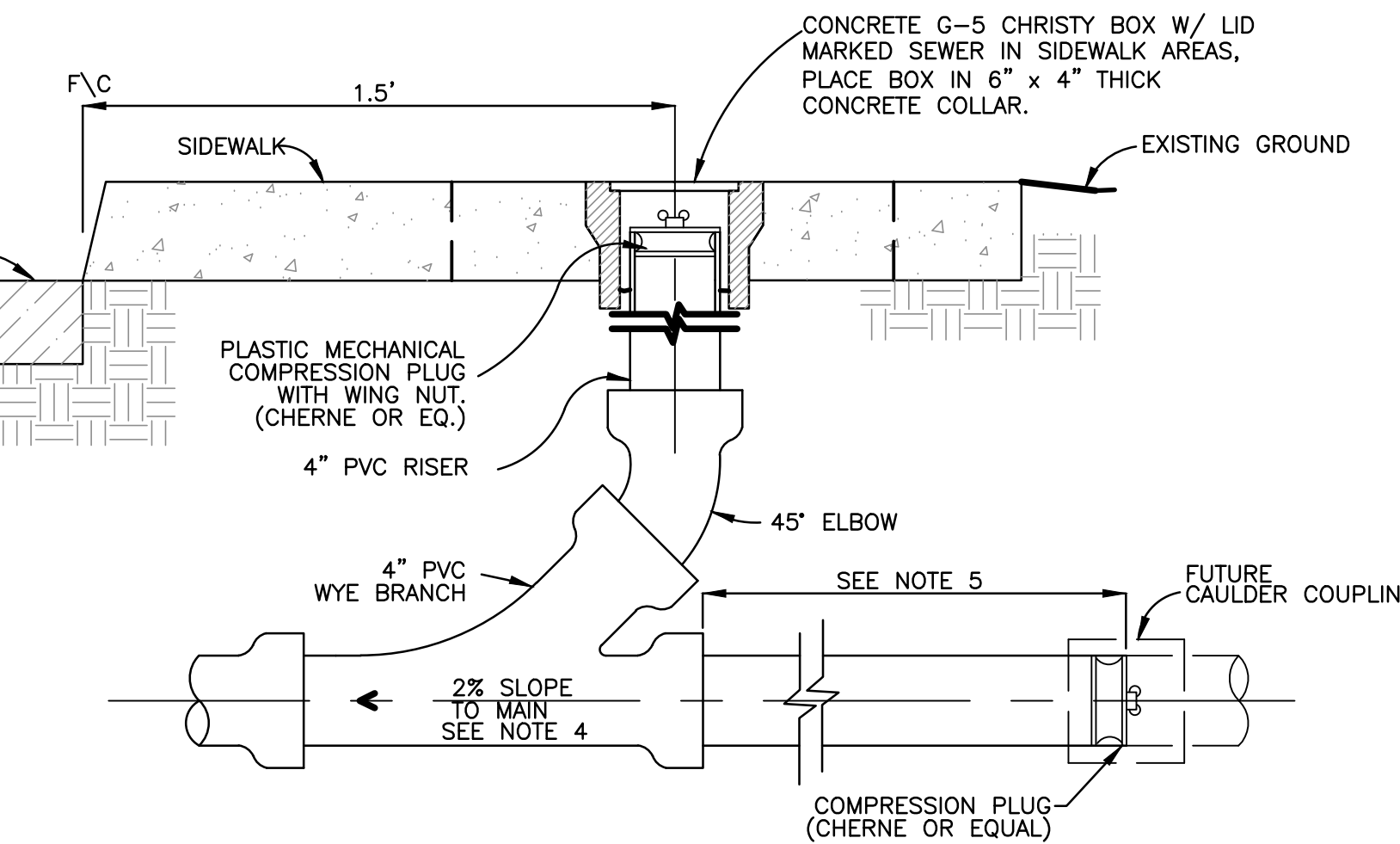


- NEW SEWER LATERAL CONNECTIONS
- DUCTILE IRON PIPE
 - POLYVINYL CHLORIDE (PVC) PIPE, SDR-35 WHEN USED WITH A MANUFACTURED "Y" SPECIFICALLY DESIGNED FOR PVC LATERALS THE "Y" SHALL BE OF THE SAME MATERIAL AS THE SEWER MAIN.
- LATERAL CONNECTIONS TO EXISTING MAINS
- PVC (SDR-35)
 - CUT IN WYE WITH "CAULDER CPLG." OR TAP WITH ROMAC SEWER SADDLE.
 - LATERALS GREATER THAN 4" DIA. REQUIRE MANHOLE CONNECTION TO MAIN.

2 SEWER SERVICE LATERAL

NOT TO SCALE

- NOTES:
- THE SEWER SERVICE LATERAL SHALL BE OF SUFFICIENT DEPTH TO ADEQUATELY SERVE THE BUILDING SITE, AND IN NO CASE SHALL BE LESS THAN 3 FT. IN DEPTH AT THE BACK OF THE P.U.E. UNLESS OTHERWISE AUTHORIZED BY THE DISTRICT.
 - WHERE PROBLEMS ARE ANTICIPATED IN PROVIDING SEWER SERVICE TO A GIVEN BUILDING SITE, THE LATERAL INVERT AT THE BACK OF THE P.U.E. SHALL BE STAKED BY THE OWNER'S ENGINEER.
 - WHERE SERVICE LATERAL IS LOCATED IN DRIVEWAY APPROACH, THE CLEANOUT IS TO BE LOCATED 18" BEHIND APRON.
 - MINIMUM 2% EXCEPT WHERE A VARIATION IS SPECIFICALLY APPROVED BY THE DISTRICT.
 - A MINIMUM OF 12" WHEN CONNECTING TO EXISTING SEWER LATERAL AND EXTEND TO 1' BEHIND P.U.E. OR 10' BACK OF SIDEWALK.

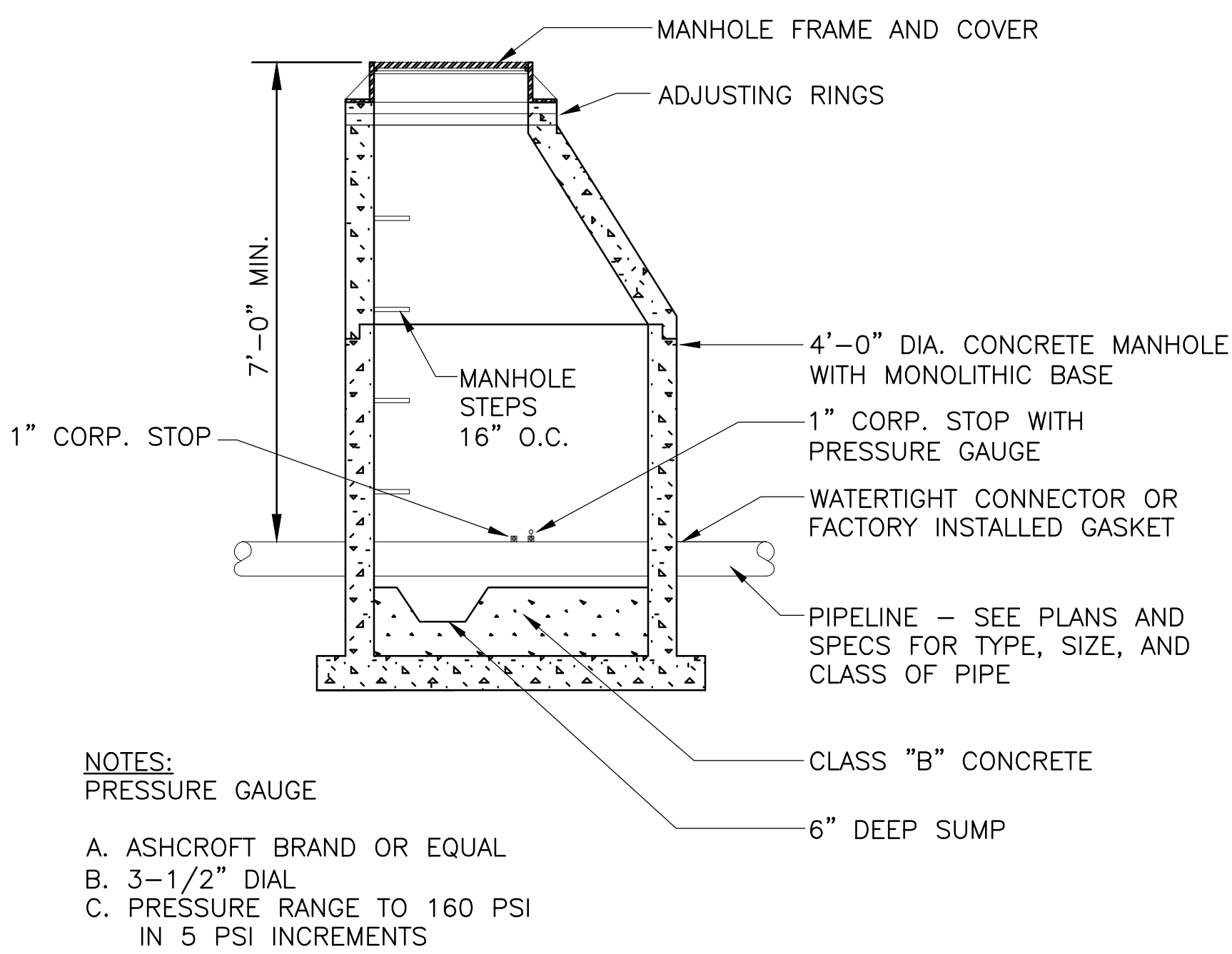


3 SEWER SERVICE LATERAL CLEANOUT

NOT TO SCALE

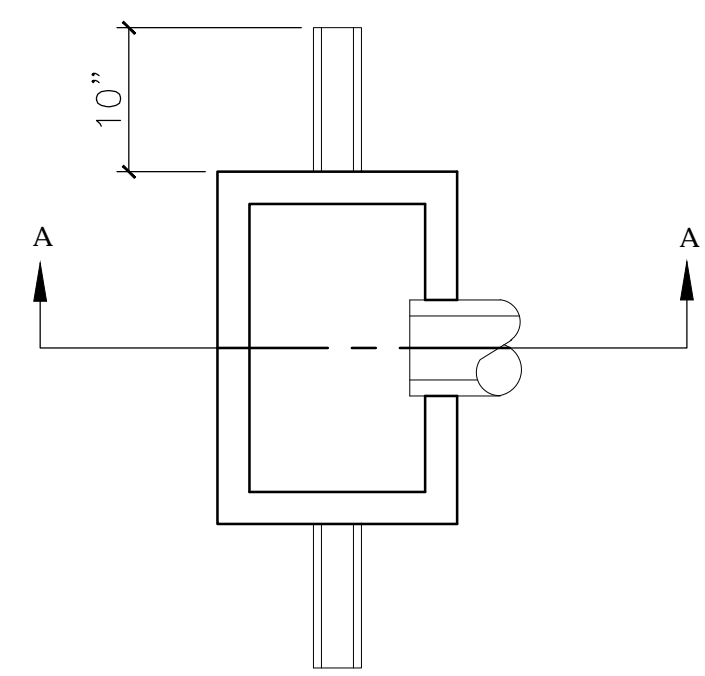
CONSULTANTS:		Stamp and Signature		ARCHITECT/ENGINEERS:		Drawing Title		Project Title		Project Number		Office of Construction and Facilities Management	
ARSENIO ORTEGA, P.E. CONSULTING ENGINEER 5 Third Street, Suite 716 San Francisco, CA 94103 (415) 546-0490 tel -0491 fax				KPA ENGINEERS ARCHITECTS 6700 KOLL CENTER PARKWAY SUITE 125 PLEASANTON CALIFORNIA 94566 TEL 925.223.8217 www.thekpagroup.com ©THE KPA GROUP 2017 KPA Project No. 625.00		UTILITY DETAILS		FISHER HOUSE #2 SITE PREPARATION UTILITIES AND LANDSCAPING		640-16-112		Office of Construction and Facilities Management	
Revisions:		Date				Approved Project Director		Location		Drawing Number		VA PAHCS	
						- VAPAHCS PLANNING AND ENGINEERING		3801 MIRANDA AVENUE, PALO ALTO, CA		CU501		VA PAHCS	
								Date		Checked		Dwg. of	
								05/01/2017		PWP		KPA TEAM	

three inches = one foot
one and one half inches = one foot
one inch = one foot
one half inch = one foot
three quarters inch = one foot
one half inch = one foot
three eighths inch = one foot
one quarter inch = one foot
one eighth inch = one foot
one eighth inch = one foot

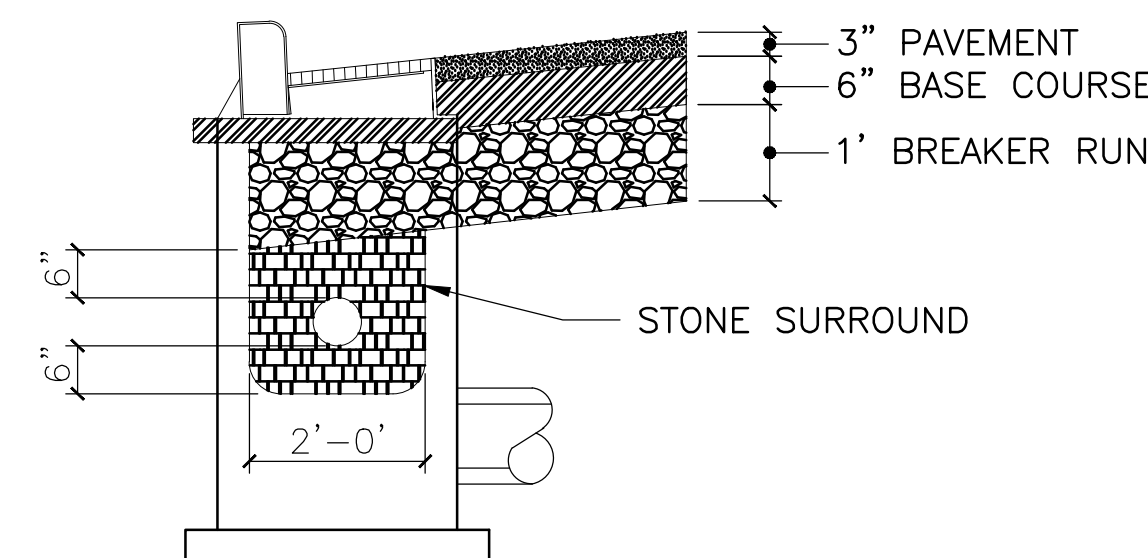


- NOTES:
PRESSURE GAUGE
A. ASHCROFT BRAND OR EQUAL
B. 3-1/2" DIAL
C. PRESSURE RANGE TO 160 PSI
IN 5 PSI INCREMENTS

7 PRECAST CONCRETE MANHOLE DETAIL
NOT TO SCALE



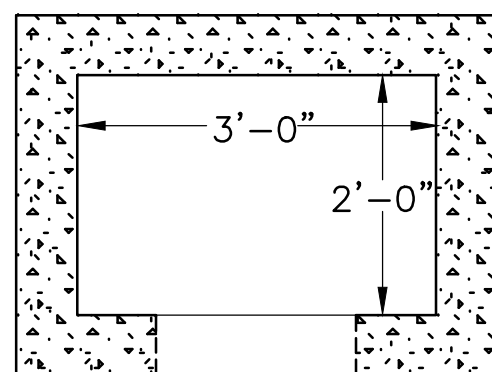
PLAN VIEW - TYPICAL CURB INLET WITH UNDERDRAIN



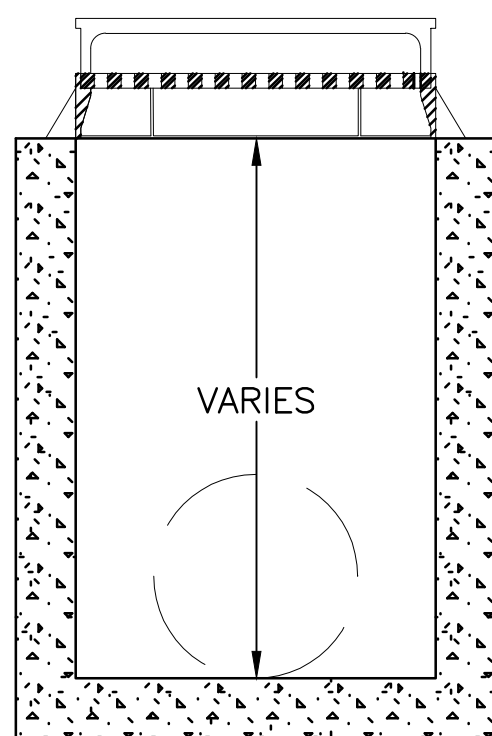
SECTION A-A - INLET WITH UNDERDRAIN

- NOTES:
1. UNDERDRAIN SHALL BE PERFORATED 6" CORRUGATED POLYETHYLENE WITH STONE SURROUND ENCASED WITH GEOTEXTILE.
2. TOP OF UNDERDRAIN SHALL LIE 6" BELOW THE FINISHED ROADWAY SUBGRADE.
3. CORE DRILL 6" DIA. HOLE TO PROVIDE TIGHT FIT OR USE NON-SHRINK GROUT TO ELIMINATE PASSAGE OF FINES.

5 CURB INLET WITH UNDERDRAIN
NOT TO SCALE



PLAN

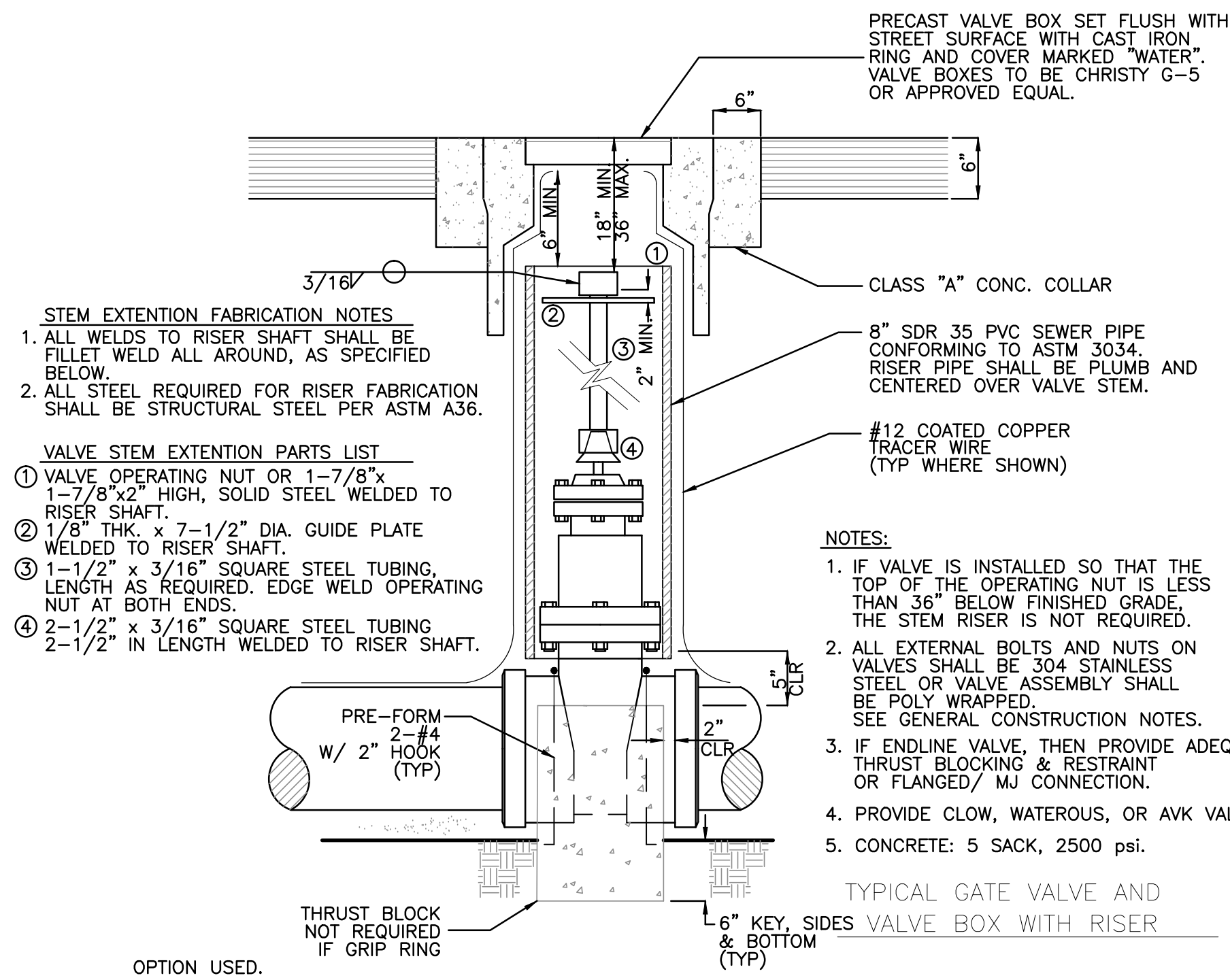


VARIES

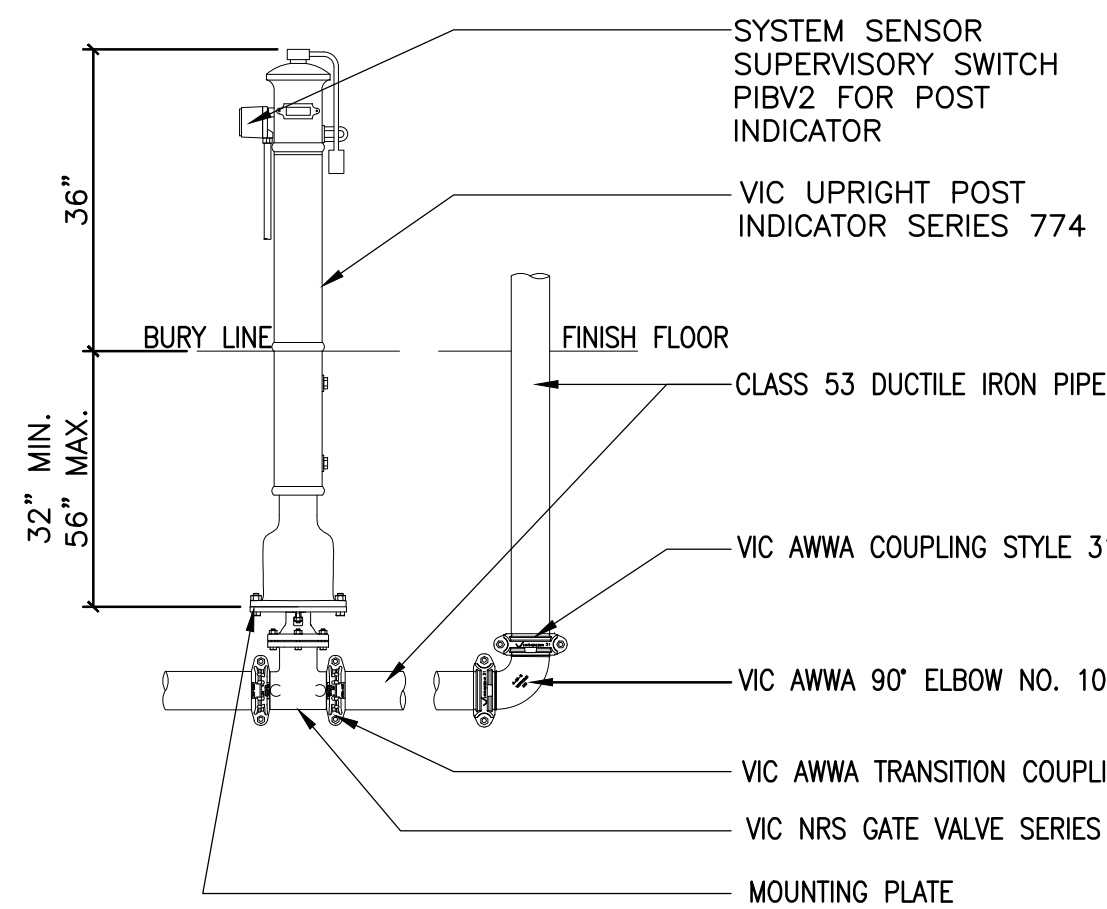
- NOTES:
1. PRECAST INLET IN ACCORDANCE WITH ASTM C-478
2. BASE SHALL BE MONOLITHIC WITH THE RISER
SECTION BOTTOM RISER SHALL BE A MINIMUM OF 24 INCHES HIGH
*FRAME, GRATE & CURB BOX FOR STORM MANHOLES WITH INLET CASTINGS, NEEHAH FOUNDRY TYPE R3246 OR EQUAL.
*ROUND, NEEHAH FOUNDRY TYPE R3235 OR EQUAL.
*YARD INLET, NEEHAH FOUNDRY TYPE R1500 OR EQUAL.

PROFILE

6 2'x3' STORM INLET DETAIL
NOT TO SCALE



3 TYPICAL GATE VALVE AND VALVE BOX WITH RISER
NOT TO SCALE



- NOTES:
1. REFER TO VICTAULIC SUBMITTAL 10.92 FOR ADDITIONAL DETAILS.
2. ITEM NUMBER 1 REFERENCE MANUFACTURERS INSTALLATION GUIDELINES, AND MOUNTING INSTRUCTIONS.
3. *SERIES 772H AND SERIES 772F NRS GATE VALVES MUST BE EQUIPPED WITH A MOUNTING PLATE IF USED WITH THE SERIES 774 UPRIGHT POST INDICATOR.

4 P.I.V. DETAIL
NOT TO SCALE

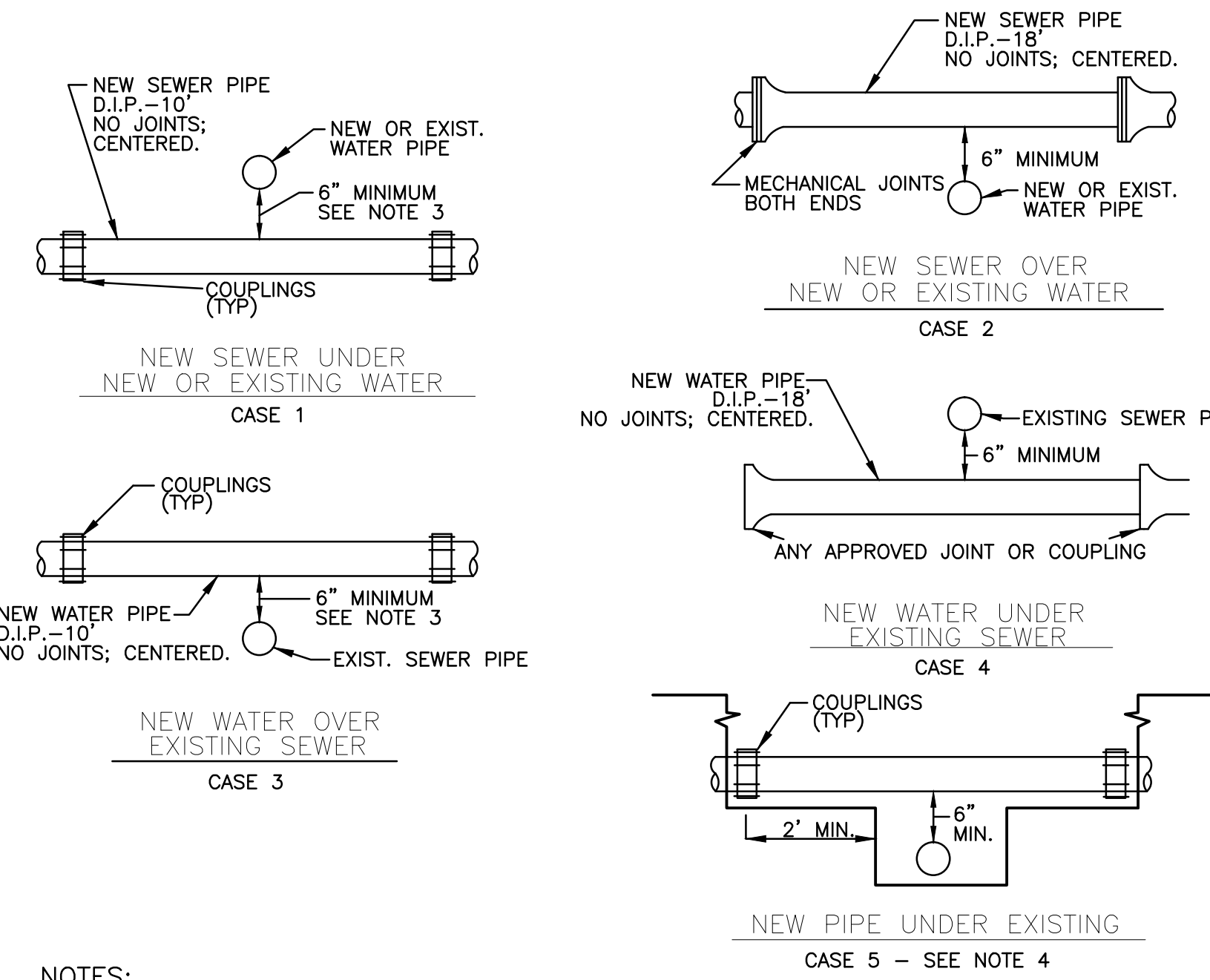
I. MATERIAL SPECIFICATIONS:

- BEDDING MATERIAL:
A.)PEA GRAVEL- CONFORMING TO CALTRANS SECTION 68-1.025, PERMEABLE MATERIAL, CLASS 1, TYPE B.
B.)CL 2 AB. - CONFORMING TO CALTRANS SECTION 26-1.02A, CLASS 2 AGGRIGATE BASE, 3/4" MAXIMUM.
- AGGREGATE BASE:
A.)CL 2 AB. - CONFORMING TO CALTRANS SECTION 26-1.02A, CLASS 2 AGGRIGATE BASE, 3/4" MAXIMUM.
- DRAIN ROCK:
A.)NO. 3 ROCK-SHALL BE A WASHED ROCK OF THE NOMINAL SIZE DESIGNATED AS 1" TO 2".
- GABION ROCK:
A.)GABION ROCK-SHALL BE A WASHED OR NON-WASHED ROCK OF THE NOMINAL SIZE DESIGNATED AS 4" TO 12".
- NATIVE MATERIAL:
A.)NATIVE MATERIAL-NATIVE MATERIAL USED AS BACKFILL SHALL BE FREE OF ORGANIC MATTER, REFUSE OR OTHER UNSATISFACTORY MATERIALS, STONES, OR LUMPS GREATER THAN OR EXCEEDING 3" IN GREATEST DIMENSION.
- SHALE MATERIAL:
A.)SHALE MATERIAL-SHALE MATERIAL SHALL MEET THE QUALITY REQUIREMENTS FOR CL 2 AB AND CONTAIN ENOUGH FINE MATERIALS TO BE ABLE TO BE COMPACTED TO 95% RC IN A TIGHT SUSTAINABLE MATRIX.

II. COMPACTION REQUIREMENTS:

- BEDDING MATERIAL:
A.) PEA GRAVEL SHALL EITHER BE HAND TAMPED UNDER AND AT THE SIDES OF THE PIPES IN LIFTS NOT GREATER THAN 6" OR SHAPED AND COMPACTED PRIOR TO PIPE INSTALLATION.
B.) CL 2 AB SHALL MEET THE ABOVE REQUIREMENTS AND SHALL ADDITIONALLY BE COMPACTED UNDER THE PIPE TO 90% RC AND UP TO THE SPRING LINE OF THE PIPE TO 90% RC IN TWO SEPERATE LIFTS RESULTING IN A FIRM UNYIELDING BEDDED TRENCH. JETTING SHALL NOT BE ALLOWED.
- AGGREGATE BASE:
A.) AGGREGATE BASE SHALL BE COMPACTED WITH MECHANICAL HAND OPERATED, OR EQUIPMENT MOUNTED OR TOWED METHODS TO ACHIEVE THE REQUIRED COMPACTION. IN ANY EVENT, COMPACTION METHODS SHALL NOT DAMAGE THE PIPE, EXCEED THE LOADING CAPACITY OF THE PIPE, OR RESULT IN A CHANGE TO THE DESIGN PIPE SLOPE REQUIRED OR DEFLECTION UNITS. JETTING SHALL NOT BE ALLOWED.
- DRAIN ROCK:
A.) DRAIN ROCK SHALL BE CONSOLIDATED WITH A SURFACE VIBRATOR.
- SHALE MATERIAL:
A.) SHALE SHALL MEET THE COMPACTION REQUIREMENTS FOR CL 2 AB.
- NATIVE MATERIAL:
A.) NATIVE MATERIAL COMPACTED TO 90% RC SHALL MEET THE COMPACTION REQUIREMENTS OF CL 2 AB. NATIVE MATERIAL COMPACTED TO LESS THAN 90% RC MAY BE COMPACTED BY WHEEL ROLLING.

1 WATER AND SEWER STANDARD
NOT TO SCALE



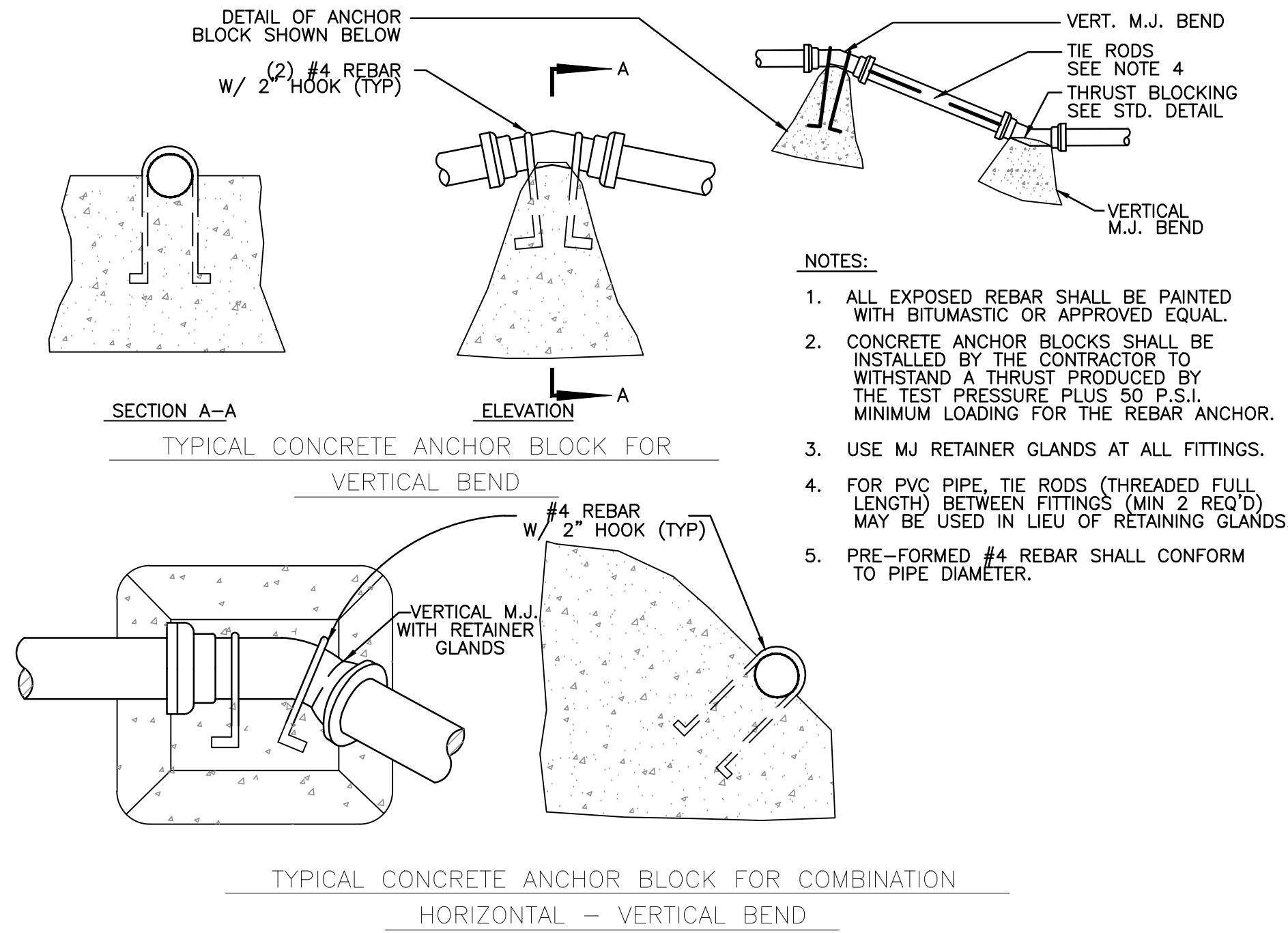
- NOTES:
1. THIS STANDARD APPLIES TO PIPES UP TO AND INCLUDING 16" DIAMETER. ALL CROSSINGS OF LARGER DIAMETER SHALL BE AS APPROVED BY THE DISTRICT.
2. ALL NEW DUCTILE IRON SHALL BE WRAPPED IN POLYETHYLENE FILM IN TUBE FORM PER DISTRICT CONSTRUCTION SPECIFICATIONS.
3. WHERE SEWER CROSSES BELOW A WATER MAIN, WITH 1' OR MORE OF VERTICAL CLEARANCE, NO SPECIAL INSTALLATION IS REQUIRED.
4. NEW PIPE UNDER EXISTING-CASE 5 SHALL BE USED WHEN THE EXISTING PIPE HAS A JOINT OVER OR WITHIN 2' OF THE NEW TRENCH.
5. ANY PIPE-PIPE CROSSING WITH LESS THAN 6" VERTICAL CLEARANCE SHALL NOT BE INSTALLED WITHOUT APPROVAL OF THE DISTRICT.
6. WATER MAIN LOWERING PER STD. DETAIL.
7. SEE ENGINEER'S APPROVED LIST FOR APPROVED COUPLINGS.

2 PIPE - PIPE CROSSING DETAIL
NOT TO SCALE

100% CONSTRUCTION DOCUMENTS

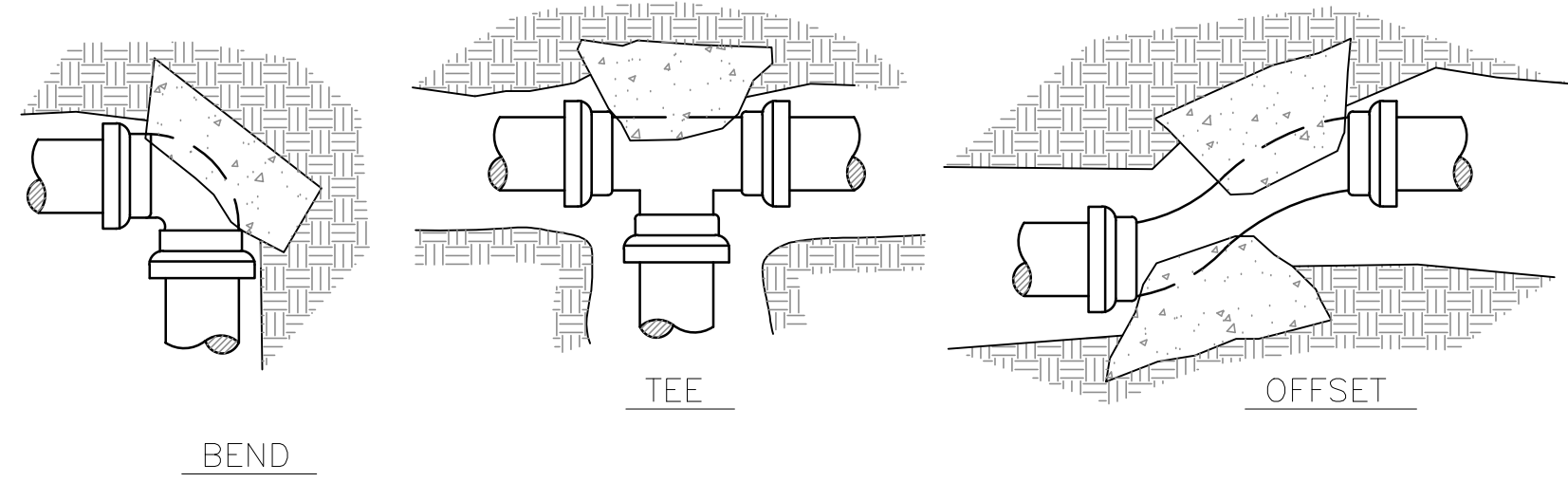
CONSULTANTS:		Stamp and Signature		ARCHITECT/ENGINEERS:		Drawing Title		Project Title		Project Number		Office of Construction and Facilities Management	
ARSENIO ORTEGA, P.E. CONSULTING ENGINEER 5 Third Street, Suite 716 San Francisco, CA 94103 (415) 546-0490 tel -0491 fax				ENGINEERS ARCHITECTS 6700 KOLL CENTER PARKWAY SUITE 125 PLEASANTON CALIFORNIA 94566 TEL 925.223.8217 www.thekpagroup.com ©THE KPA GROUP 2017 KPA Project No. 625.00		UTILITY DETAILS		FISHER HOUSE #2 SITE PREPARATION UTILITIES AND LANDSCAPING		640-16-112		Office of Construction and Facilities Management	
Revisions:		Date				Approved Project Director - VAPAHCS PLANNING AND ENGINEERING		Location 3801 MIRANDA AVENUE, PALO ALTO, CA		Building Number -		VA PAHCS	
								Date 05/01/2017		Checked PWP		Drawn KPA TEAM	
										Drawing Number CU502		Dwg. of	

three inches = one foot
one and one half inches = one foot
one inch = one foot
three quarters inch = one foot
one half inch = one foot
three eighths inch = one foot
one quarter inch = one foot
one eighth inch = one foot



1 CONCRETE ANCHOR BLOCKS FOR VERTICAL BENDS

NOT TO SCALE



- NOTES:
- SAFE BEARING LOAD OF SOIL FOR HORIZONTAL THRUST SHALL NOT BE EXCEEDED.
 - CONCRETE BLOCKING, CAST-IN-PLACE, TO EXTEND FROM BELLS OF FITTINGS TO UNDISTURBED SOIL AND ENTIRE BEARING AREA MUST BE AGAINST UNDISTURBED SOIL.
 - IN USING THE THRUST BLOCKING TABLE BELOW, ASSUME 2000 P.S.F. BEARING CAPACITY UNLESS OTHERWISE SHOWN ON THE PLANS. THE DESIGN ENGINEER SHALL SPECIFY THRUST BLOCKING REQUIREMENTS FOR ALL OTHER SOIL BEARING CONDITIONS.
 - FOR PLUGGED LEG(S) OF TEE OR CROSS, USE HARNESS TYPE BLOCKING AS SHOWN ON THE STD DETAILS AND CONCRETE BLOCKING INDICATED IN THE TABLE BELOW.

	MIN REQ'D BEARING AREA IN SF PER 100 P.S.I. TEST PRESSURE*	SOIL BRG CAPACITY		HARNESS BLOCKS		TEES & DEAD ENDS		90° BENDS		45° BENDS		22-1/2° BENDS	
		1000	2000	2	1	2	1	3	1.5	2	1	2	0.5
4"		1000	2000	2	1	2	1	3	1.5	2	1	2	0.5
6"		1000	2000	4	2	4	2	6	3	3	2	2	1
8"		1000	2000	7	4	7	4	10	5	5	3	3	2
10"		1000	2000	12	6	12	6	17	8.5	10	5	5	2.5
12"		1000	2000	16	8	16	8	22	11	12	6	6	3

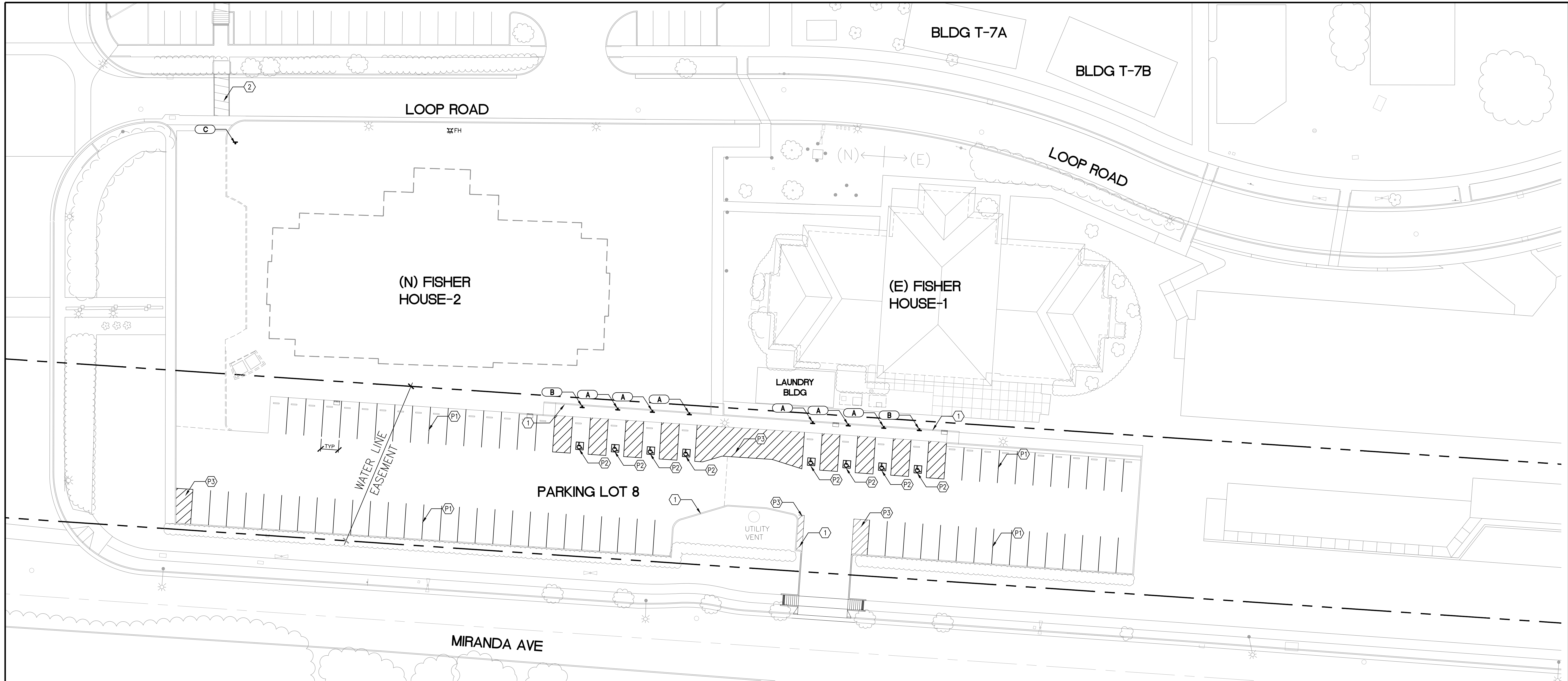
* MULTIPLY NO. IN TABLE BY TEST PRESSURE & DIVIDE BY 100

2 CONCRETE THRUST BLOCKING

NOT TO SCALE

Revisions:	Date	CONSULTANTS:	Stamp and Signature	ARCHITECT/ENGINEERS:	Drawing Title	Project Title	Project Number	Office of Construction and Facilities Management
		ARSENIO ORTEGA, P.E. CONSULTING ENGINEER 5 Third Street, Suite 716 San Francisco, CA 94103 (415) 546-0490 tel -0491 fax		 THE KPA GROUP ENGINEERS ARCHITECTS 6700 KOLL CENTER PARKWAY SUITE 125 PLEASANTON CALIFORNIA 94566 TEL 925.223.8217 www.thekpagroup.com ©THE KPA GROUP 2017 KPA Project No. 625.00	UTILITY DETAILS	FISHER HOUSE #2 SITE PREPARATION UTILITIES AND LANDSCAPING	640-16-112	Office of Construction and Facilities Management
					Approved Project Director	Location	Building Number	Office of Construction and Facilities Management
					-	3801 MIRANDA AVENUE, PALO ALTO, CA	-	Office of Construction and Facilities Management
					VAPAHCs PLANNING AND ENGINEERING	Date	Drawing Number	Office of Construction and Facilities Management
						05/01/2017	CU503	Office of Construction and Facilities Management
						Checked	Dwg. of	Office of Construction and Facilities Management
						PWP		Office of Construction and Facilities Management
						Drawn		Office of Construction and Facilities Management
						KPA TEAM		Office of Construction and Facilities Management

three eighths inch = one foot
one quarter inch = one foot
one eighth inch = one foot
one half inch = one foot
three quarters inch = one foot
one inch = one foot
one and one half inches = one foot
two inches = one foot
three inches = one foot



1 PARKING SIGNAGE AND STRIPING PLAN
1"=20'-0"

SIGNAGE KEY

- A ACCESSIBLE PARKING STALL SIGN (3 CT503)
B ACCESSIBLE VAN PARKING STALL SIGN (3 CT503)
C STOP SIGN

KEYED NOTES:

- 1 PAINT CURB
2 REPLACE PAVEMENT MARKINGS AT CROSSWALK

PAVEMENT MARKINGS:

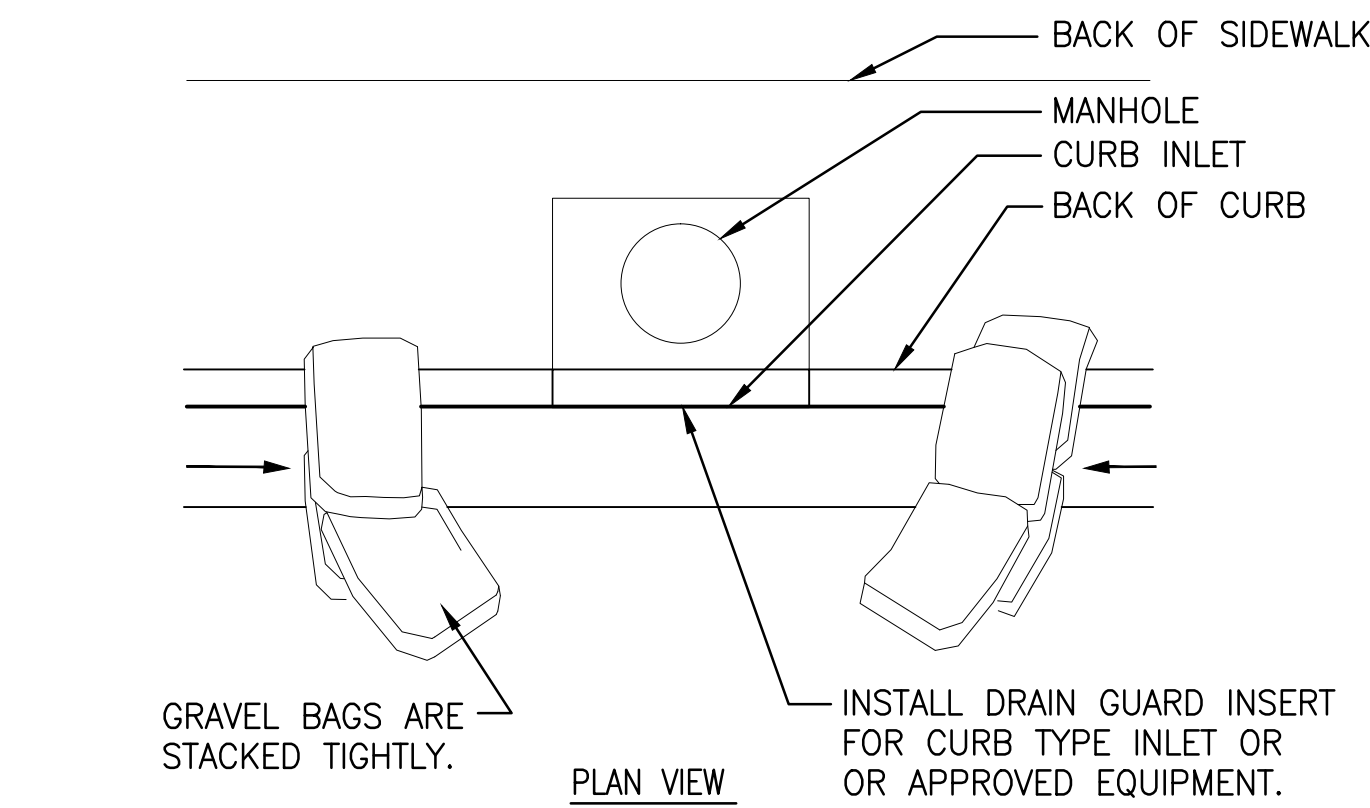
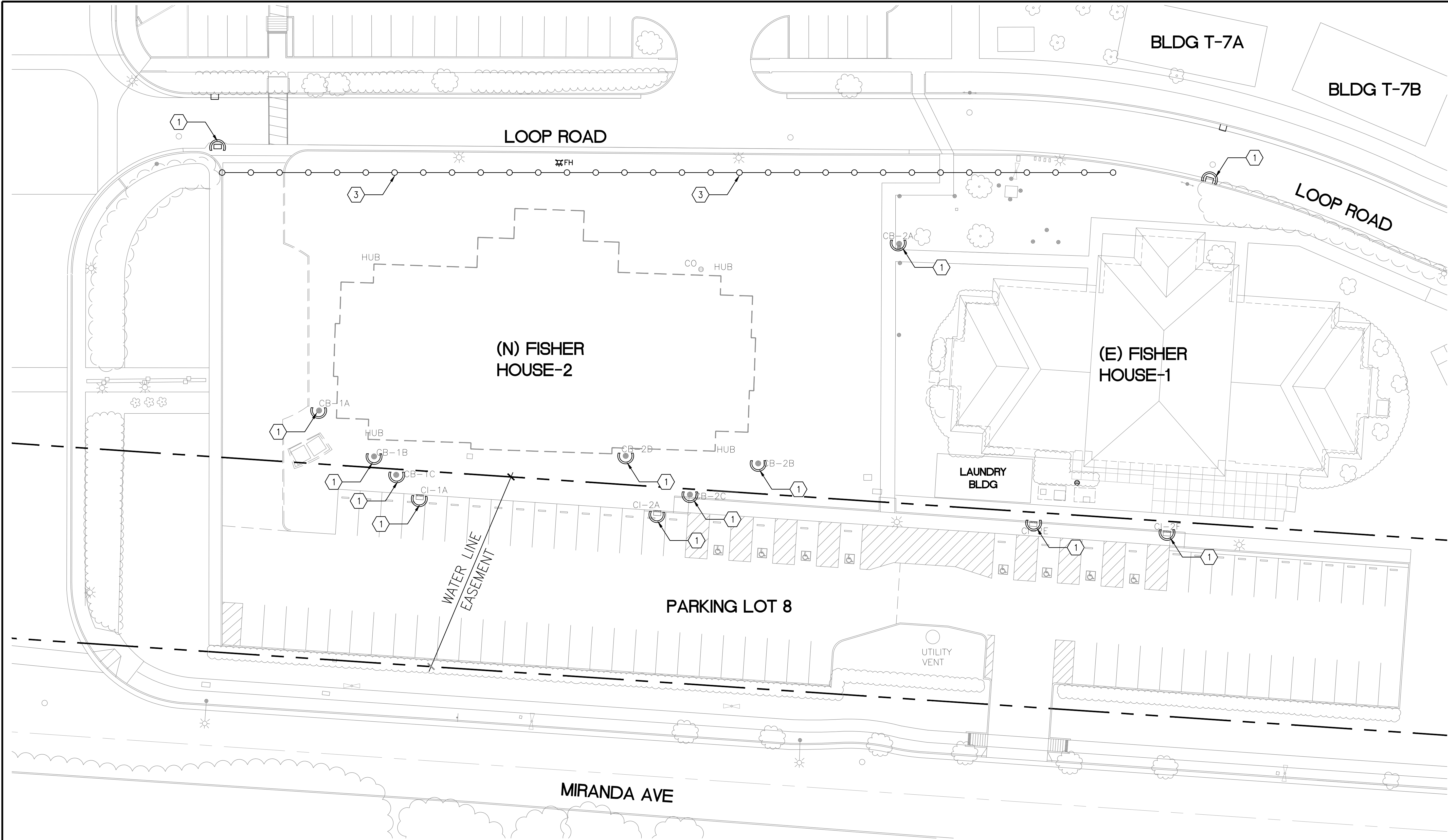
- P1 PARKING STALL STRIPING
P2 ACCESSIBILITY PARKING (2 CT503)
P3 CAUTION STRIPING

100% CONSTRUCTION DOCUMENTS

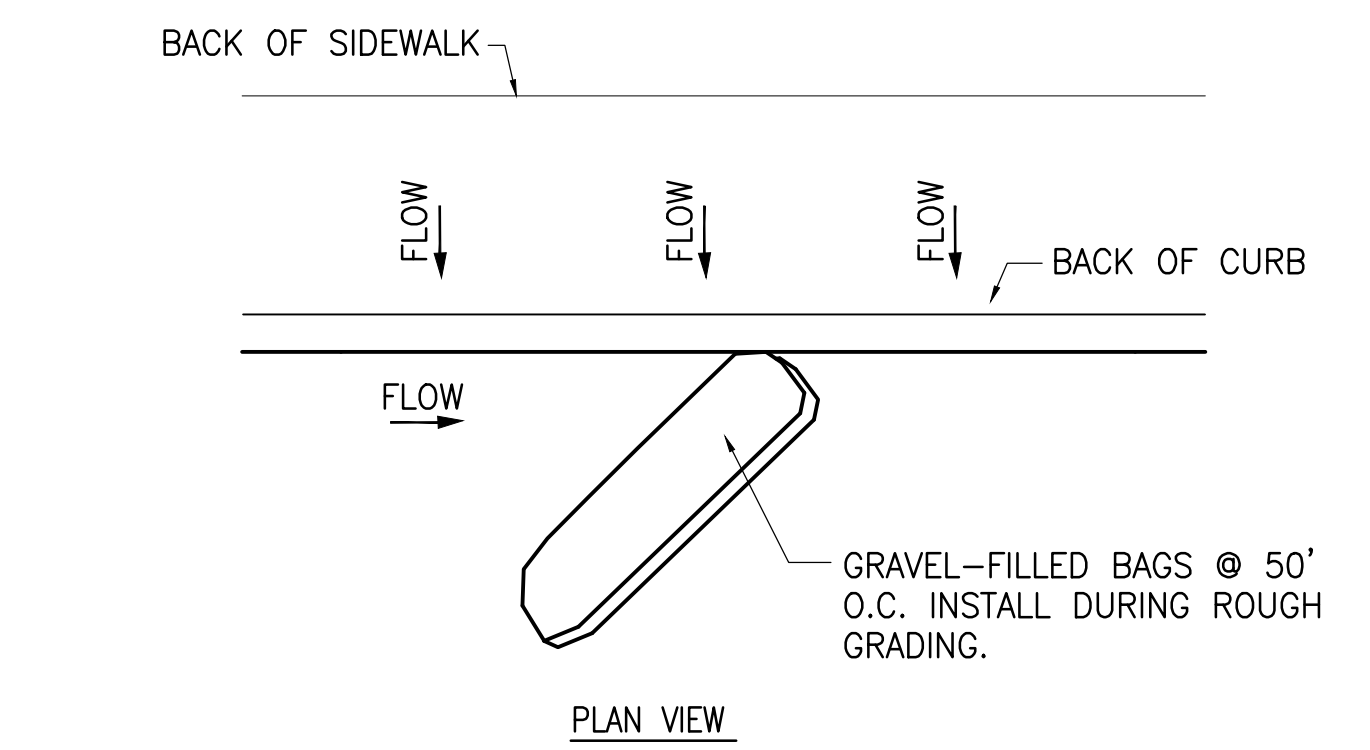


100% CONSTRUCTION DOCUMENTS

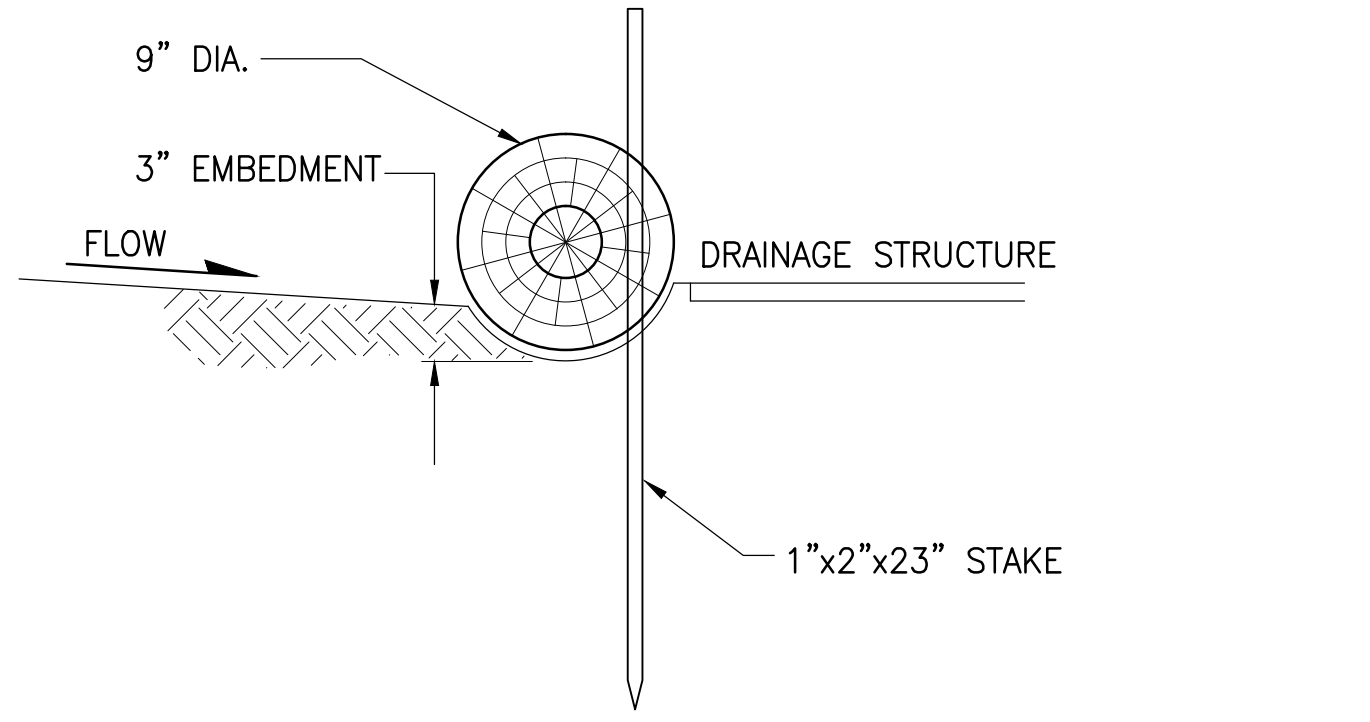
three inches = one foot
one and one half inches = one foot
one inch = one foot
three quarters inch = one foot
one half inch = one foot
three eighths inch = one foot
one quarter inch = one foot
one eighth inch = one foot



1 CURB INLET DRAIN PROTECTION
NOT TO SCALE

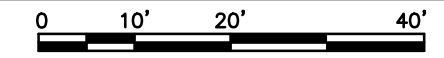


2 GRAVEL BAG BERM
NOT TO SCALE



3 STORMWATER WATTLE
NOT TO SCALE

4 EROSION CONTROL PLAN
1"=20'-0"



GENERAL CONTROL NOTES:

- IT SHALL BE THE CONTRACTOR'S RESPONSIBILITY TO MAINTAIN CONTROL OF THE ENTIRE CONSTRUCTION OPERATION AND TO KEEP THE ENTIRE SITE IN COMPLIANCE WITH STATE AND LOCAL SOIL EROSION CONTROL LAWS AND MEASURES.
- CONTROLS SHOWN ARE MINIMUM REQUIREMENTS. ALL SLOPES SHALL BE PROTECTED IMMEDIATELY FOLLOWING EARTHWORK GRADING. CONTRACTOR TO SUBMIT A SWPPP IN ACCORDANCE TO LATEST REQUIREMENTS AND SUBMIT TO THE COR FOR REVIEW AND APPROVAL.
- ADJUSTMENTS SHALL BE MADE TO THIS PLAN AS NECESSARY TO WORK WITH THE CONSTRUCTION PHASING OF THE PROJECT. SUBMIT PLAN TO THE CONTRACTING OFFICIALS REPRESENTATIVE FOR APPROVAL.
- THIS EROSION AND SEDIMENT CONTROL PLAN MAY NOT COVER ALL THE SITUATIONS THAT MAY ARISE DURING CONSTRUCTION DUE TO UNANTICIPATED FIELD CONDITIONS. VARIATIONS AND ADDITIONS MAY BE MADE BY THE CONTRACTOR TO THIS PLAN WITH APPROVAL BY THE COR.
- CONTRACTOR SHALL BE RESPONSIBLE FOR IMPLEMENTING & MAINTAINING EROSION AND SEDIMENT CONTROL MEASURES PRIOR, DURING AND AFTER STORM EVENTS.
- CONTRACTOR SHALL PREPARE AND MAINTAIN THE FACES OF CUT AND FILL SLOPES TO CONTROL EROSION.
- CONTRACTOR SHALL CARRY OUT CONSTRUCTION OPERATIONS IN SUCH A MANNER THAT EROSION AND WATER POLLUTION WILL BE MINIMIZED. EXERCISE REASONABLE CARE WHEN HAULING ANY CONSTRUCTION DEBRIS OVER EXISTING ROADWAYS. SHOULD ANY BLOW, SPILL OR TRACK OVER AND UPON SAID PUBLIC OR ADJACENT PRIVATE PROPERTY, IMMEDIATELY REMEDY THE SITUATION BY USING PROPER CLEANING PROCEDURES. CONTRACTOR SHALL KEEP ALL PAVED AREAS CLEAR OF EARTH, MATERIAL AND DEBRIS.
- CONTRACTOR SHALL PROVIDE DUST CONTROL.

KEYED NOTES

- DRAIN INLET PROTECTION, SEE DETAIL 1/CJ101
- GRAVEL BAG, SEE DETAIL 2/CJ101
- STORMWATER WATTLE, SEE DETAIL 3/CJ101

LEGEND

- DRAIN INLET PROTECTION
- GRAVEL BAG
- STORM WATER WATTLE

CONSULTANTS: ARSENIO ORTEGA, P.E. CONSULTING ENGINEER 5 Third Street, Suite 716 San Francisco, CA 94103 (415) 546-0490 tel -0491 fax		Stamp and Signature 	ARCHITECT/ENGINEERS: ENGINEERS ARCHITECTS 6700 KOLL CENTER PARKWAY SUITE 125 PLEASANTON CALIFORNIA 94566 TEL 925.223.8217 www.thekpagroup.com ©THE KPA GROUP 2017 KPA Project No. 625.00		Drawing Title EROSION CONTROL PLAN Approved Project Director - VAPAHCS PLANNING AND ENGINEERING	Project Title FISHER HOUSE #2 SITE PREPARATION UTILITIES AND LANDSCAPING Location 3801 MIRANDA AVENUE, PALO ALTO, CA Date 05/01/2017 Checked PWP Drawn KPA TEAM	Project Number 640-16-112 Building Number - Drawing Number CJ101 Dwg. of	Office of Construction and Facilities Management VAPAHCS Veterans Affairs Palo Alto Health Care System
--	--	------------------------------------	---	--	---	---	--	---