

Department of Veterans Affairs

John J. Pershing VAMC Clinical & Urgent Care Addition

1500 N Westwood Blvd, Poplar Bluff, MO 63901

VA PROJECT NO. 657-351
CONSTRUCTION DOCUMENTS - FINAL BID DOCUMENTS
DECEMBER 14, 2015

CANNONDESIGN

BOSTON NEW YORK BALTIMORE WASHINGTON DC BUFFALO TORONTO MONTREAL CHICAGO
ST. LOUIS VANCOUVER SAN FRANCISCO LOS ANGELES PHOENIX SHANGHAI MUMBAI DELHI

Consultants:

Landmark Engineering Group, Inc.
Civil Engineer
2834 104th Street
Urbandale, IA 50322
515.221.1322

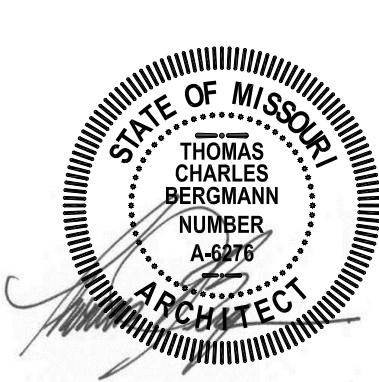
Gateway Geotechnical, LLC
Geotechnical Engineer
17736 Edison Avenue
Chesterfield, MO 63005
636.532.7747

SWT Design
Landscape Architect
7722 Big Bend Boulevard
St. Louis, MO 63119
314.644.5700

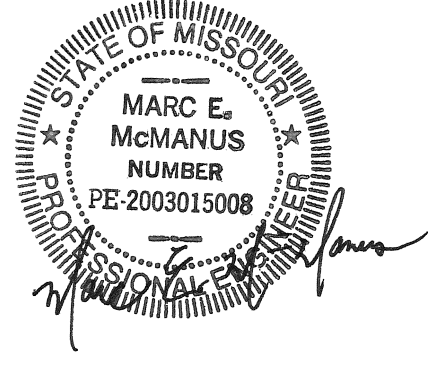
Hinman Consulting Engineers, Inc
Physical Security
One Bush Street, Suite 510
San Francisco, CA 94104
415.621.4423

The Schachinger Group
Elevator
4255 Stoney Creek Drive
Fort Collins, CO 80525
703.608.2263

SidePlate
Steel Frame
25909 Pala, Ste 200, 92691
Mission Viejo, CA 949.305.7889



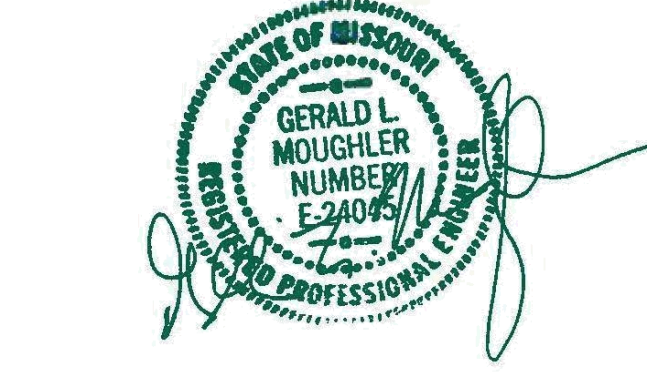
THIS STAMP IS FOR GENERAL AND ARCHITECTURAL DRAWINGS



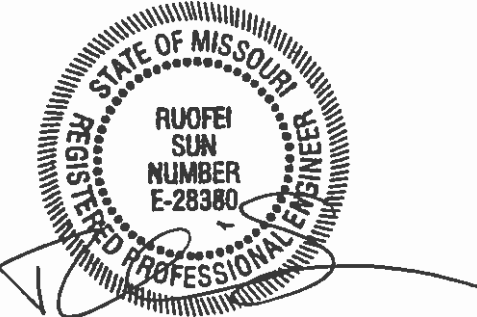
THIS STAMP IS FOR FIRE PROTECTION PLUMBING AND MECHANICAL DRAWINGS



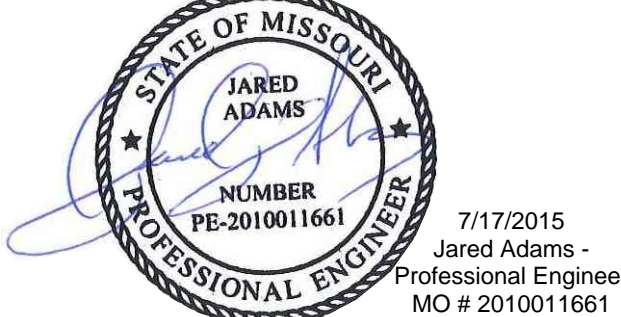
THIS STAMP IS FOR ELECTRICAL DRAWINGS



THIS STAMP IS FOR CIVIL DRAWINGS



THIS STAMP IS FOR STRUCTURAL DRAWINGS SS-001 THRU SS-512



THIS STAMP IS FOR STRUCTURAL DRAWINGS SS-601 THRU SS-606

1	FINAL BID PACKAGE	12/14/15
Revisions:		Date

CONSULTANTS:

Landmark Engineering Group, Inc.
Civil Engineer
2834 104th Street
Urbandale, IA 50322
515.221.1322

Gateway Geotechnical, LLC
Geotechnical Engineer
17736 Edison Avenue
Chesterfield, MO 63005
636.532.7747

SWT Design
Landscape Architect
7722 Big Bend Boulevard
St. Louis, MO 63119
314.644.5700

Hinman Consulting Engineers, Inc
Physical Security
One Bush Street, Suite 510
San Francisco, CA 94104
415.621.4423

The Schachinger Group
Elevator
4255 Stoney Creek Drive
Fort Collins, CO 80525
703.608.2263

SidePlate
Steel Frame
25909 Pala, Ste 200, 92691
Mission Viejo, CA 949.305.7889

ARCHITECT/ENGINEERS:

CANNONDESIGN

© CannonDesign 2014
All rights reserved. No part of this document may be reproduced or utilized in any form, without prior written authorization by The Cannon Corporation.

Drawing Title
COVER SHEET
Approved: Project Director

Project Title
John J. Pershing VAMC Clinical & Urgent Care Addition
Location
Poplar Bluff, Missouri
Date
DEC 14, 2015
Checked
Checker
Drawn
Author

Project Number
657-351
CANNON DESIGN PROJECT NO. 03860.05
Building Number
Drawing Number
GI-001
Dwg. of



one eighth inch = one foot
one quarter inch = one foot
one half inch = one foot
three eighths inch = one foot
one inch = one foot
one and one half inches = one foot
two inches = one foot
three inches = one foot

one eighth inch = one foot
one quarter inch = one foot
one half inch = one foot
three eighths inch = one foot
one inch = one foot
one and one half inches = one foot
two inches = one foot
three inches = one foot

one eighth inch = one foot
one quarter inch = one foot
one half inch = one foot
three eighths inch = one foot
one inch = one foot
one and one half inches = one foot
two inches = one foot
three inches = one foot

one eighth inch = one foot
one quarter inch = one foot
one half inch = one foot
three eighths inch = one foot
one inch = one foot
one and one half inches = one foot
two inches = one foot
three inches = one foot

one eighth inch = one foot
one quarter inch = one foot
one half inch = one foot
three eighths inch = one foot
one inch = one foot
one and one half inches = one foot
two inches = one foot
three inches = one foot

one eighth inch = one foot
one quarter inch = one foot
one half inch = one foot
three eighths inch = one foot
one inch = one foot
one and one half inches = one foot
two inches = one foot
three inches = one foot

one eighth inch = one foot
one quarter inch = one foot
one half inch = one foot
three eighths inch = one foot
one inch = one foot
one and one half inches = one foot
two inches = one foot
three inches = one foot

one eighth inch = one foot
one quarter inch = one foot
one half inch = one foot
three eighths inch = one foot
one inch = one foot
one and one half inches = one foot
two inches = one foot
three inches = one foot

one eighth inch = one foot
one quarter inch = one foot
one half inch = one foot
three eighths inch = one foot
one inch = one foot
one and one half inches = one foot
two inches = one foot
three inches = one foot

one eighth inch = one foot
one quarter inch = one foot
one half inch = one foot
three eighths inch = one foot
one inch = one foot
one and one half inches = one foot
two inches = one foot
three inches = one foot

GENERAL

SHEET #	SHEET NAME
GI-001	COVER SHEET
GI-002	DRAWING INDEX
GI-003	SYMBOLS & ABBREVIATIONS
GC-101	LOWER LEVEL CODE COMPLIANCE PLAN
GC-102	GROUND LEVEL CODE COMPLIANCE PLAN
GC-103	LEVEL 01 CODE COMPLIANCE PLAN
GC-104	PHASING PLAN

CIVIL

VF-101	SITE SURVEY
CD-101	SITE DEMOLITION PLAN
CD-101A	SITE DEMOLITION PLAN - BID ALTERNATE 2
CS-101	SITE PLAN
CS-101A	SITE PLAN - BID ALTERNATE 2
CS-102	GRADING AND DRAINAGE PLAN
CS-102A	GRADING AND DRAINAGE PLAN - BID ALTERNATE 2
CS-103	SITE UTILITIES
CS-104	DETAILS
CS-105	DETAILS

LANDSCAPE

LS-101	OVERALL SITE PLAN
LS-102	COURTYARD SITE PLAN
LS-103	ENTRY SITE PLAN
LS-103A	BID ALTERNATE 9 ENTRY SITE PLAN
LS-104	AMBULANCE BAY SITE PLAN
LP-101	TREE PLANTING PLAN
LP-102	UNDERSTORY PLANTING PLAN
LP-103	UNDERSTORY PLANTING PLAN
LP-104	SEED & SOD PLAN
LP-104A	BID ALTERNATE 9 PLANTING PLAN
LD-501	PLANTING DETAILS

STRUCTURAL

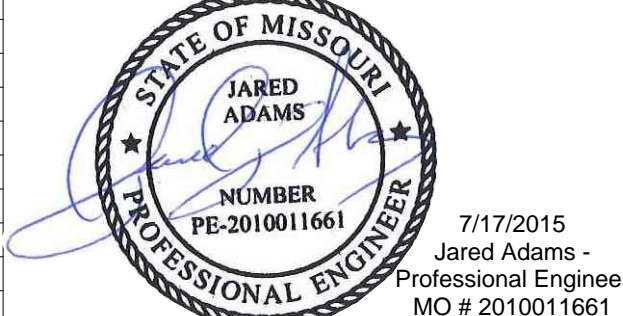
SS-001	GENERAL NOTES AND ABBREVIATIONS
SS-101	LOWER LEVEL FOUNDATION PLAN
SS-102	GROUND LEVEL FOUNDATION PLAN
SS-103	LEVEL 01 FRAMING PLAN
SS-104	ROOF/PENTHOUSE FRAMING PLAN
SS-105	PENTHOUSE ROOF FRAMING PLAN
SS-201	STEEL COLUMN SCHEDULE AND DETAILS
SS-211	LATERAL SYSTEM ELEVATIONS
SS-212	LATERAL SYSTEM ELEVATIONS
SS-301	TYPICAL FOUNDATION DETAILS
SS-302	TYPICAL FOUNDATION DETAILS
SS-311	FOUNDATION DETAILS
SS-312	FOUNDATION DETAILS
SS-401	TYPICAL MASONRY DETAILS
SS-501	TYPICAL STEEL FRAMED DETAILS
SS-502	TYPICAL STEEL DECK DETAILS
SS-511	STEEL DETAILS
SS-512	STEEL DETAILS
SS-601	SSMF GENERAL NOTES (1 OF 2)
SS-602	SSMF GENERAL NOTES (2 OF 2)
SS-603	SSMF A TYPE & B TYPE TYPICAL DETAILS
SS-604	SSMF C TYPE TYPICAL DETAILS
SS-605	SSMF TYPICAL BEAM DETAILS
SS-606	SSMF MISC DETAILS



THIS STAMP IS FOR CIVIL DRAWINGS



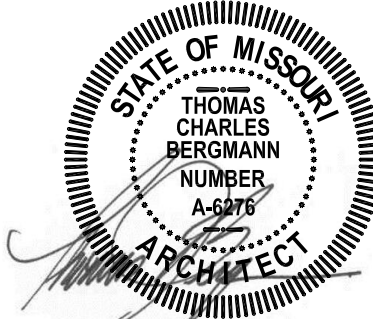
THIS STAMP IS FOR STRUCTURAL DRAWINGS SS-001 THRU SS-512



THIS STAMP IS FOR STRUCTURAL DRAWINGS SS-601 THRU SS-606

ARCHITECTURAL

SHEET #	SHEET NAME
AD-101	DEMOLITION PLANS
AS-101	LOWER LEVEL FLOOR PLAN
AS-102	GROUND LEVEL FLOOR PLAN
AS-103	LEVEL 01 FLOOR PLAN
AS-103A	LEVEL 01 FLOOR PLAN - BID ALTERNATE 1
AS-104	ROOF PLAN
AS-201	EXTERIOR ELEVATIONS
AS-202	EXTERIOR ELEVATIONS
AS-301	BUILDING SECTIONS
AS-302	WALL SECTIONS
AS-303	WALL SECTIONS
AS-304	WALL SECTIONS
AS-305	WALL SECTIONS
AS-306	WALL SECTIONS
AS-401	LOWER LEVEL ENLARGED FLOOR PLAN
AS-402	GROUND LEVEL ENLARGED FLOOR PLAN
AS-403	LEVEL 01 ENLARGED FLOOR PLAN
AS-404	ENLARGED LOBBY PLANS
AS-411	ELEVATOR PLANS AND SECTION
AS-412	ELEVATOR DETAILS
AS-413	ENLARGED STAIR PLANS AND SECTIONS
AS-414	STAIR DETAILS
AS-421	ENLARGED ELEVATIONS
AS-422	ENLARGED ELEVATIONS
AS-423	ENLARGED ELEVATIONS
AS-424	ENLARGED ELEVATIONS
AS-425	ENLARGED ELEVATIONS
AS-501	EXTERIOR PLAN DETAILS
AS-502	EXTERIOR PLAN DETAILS
AS-503	EXTERIOR PLAN DETAILS
AS-511	EXTERIOR SECTION DETAILS
AS-512	EXTERIOR SECTION DETAILS
AS-513	EXTERIOR SECTION DETAILS
AS-514	EXTERIOR DETAILS
AS-521	ROOF DETAILS
AS-522	ROOF DETAILS
AS-611	PARTITION TYPES
AS-612	PARTITION DETAILS
AS-621	DOORS & BORROWED LIGHTS
AI-101	LOWER LEVEL REFLECTED CEILING PLAN
AI-102	GROUND LEVEL REFLECTED CEILING PLAN
AI-103	LEVEL 01 REFLECTED CEILING PLAN
AI-103A	LEVEL 01 REFLECTED CEILING PLAN - BID ALTERNATE 1
AI-111	WALL PROTECTION PLANS
AI-201	MOUNTING HEIGHTS
AI-202	INTERIOR ELEVATIONS LOWER LEVEL
AI-203	INTERIOR ELEVATIONS LOWER LEVEL
AI-204	INTERIOR ELEVATIONS LOWER LEVEL
AI-205	INTERIOR ELEVATIONS LOWER LEVEL
AI-206	INTERIOR ELEVATIONS GROUND LEVEL
AI-208	INTERIOR ELEVATIONS LEVEL 1
AI-209	INTERIOR ELEVATIONS LEVEL 1
AI-210	INTERIOR ELEVATIONS LEVEL 1
AI-801	CEILING DETAILS
AI-802	INTERIOR DETAILS
AI-803	INTERIOR DETAILS
AI-804	MILLWORK DETAILS
AI-805	MILLWORK STANDARDS & DETAILS
AF-101	FLOOR FINISH PLANS



THIS STAMP IS FOR GENERAL AND ARCHITECTURAL DRAWINGS

FIRE PROTECTION

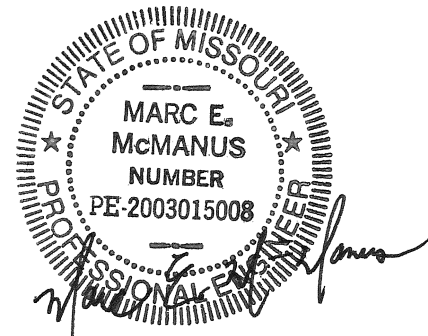
SHEET #	SHEET NAME
FA-101	LOWER LEVEL FIRE ALARM PLAN
FA-102	GROUND LEVEL ALARM PLAN
FA-103	LEVEL ONE FIRE ALARM PLAN
FA-103A	LEVEL ONE FIRE ALARM PLAN - BID ALTERNATE 1
FA-104	ROOF LEVEL FIRE ALARM PLAN
FA-601	FIRE ALARM RISER DIAGRAM
FX-001	FIRE SUPPRESSION ABBREVIATIONS & SYMBOLS
FX-101	FIRE SUPPRESSION LOWER LEVEL PLAN
FX-102	FIRE SUPPRESSION GROUND LEVEL PLAN
FX-103	FIRE SUPPRESSION LEVEL 01 PLAN
FX-103A	FIRE SUPPRESSION LEVEL ONE PLAN - BID ALTERNATE 1
FX-104	FIRE SUPPRESSION PENTHOUSE PLAN
FX-601	FIRE PROTECTION DETAILS

PLUMBING

PL-001	PLUMBING ABBREVIATIONS AND SYMBOLS
PL-100	PLUMBING UNDERGROUND PIPING PLAN
PL-101	PLUMBING LOWER LEVEL PIPING PLAN
PL-102	PLUMBING GROUND LEVEL PIPING PLAN
PL-103	PLUMBING LEVEL 01 PIPING PLAN
PL-103A	PLUMBING LEVEL 01 PIPING PLAN - BID ALTERNATES 1 AND 8
PL-104	PLUMBING ROOF PIPING PLAN
PL-201	PLUMBING RISER DIAGRAM
PL-202	PLUMBING RISER DIAGRAMS
PL-501	PLUMBING SCHEDULES
PL-601	PLUMBING DETAILS
DP-101	PROCESS PIPING LOWER LEVEL PLAN
DP-102	PROCESS PIPING GROUND LEVEL PLAN
DP-103	PROCESS PIPING LEVEL 01 PLAN
DP-103A	PROCESS PIPING LEVEL 01 PLAN - BID ALTERNATES 1 AND 8

MECHANICAL

MH-001	SYMBOLS, ABBREVIATIONS, AND GENERAL NOTES
MH-101	LOWER LEVEL HVAC DUCTWORK PLAN
MH-102	GROUND LEVEL HVAC DUCTWORK & DEMO PLAN
MH-103	LEVEL 01 HVAC DUCTWORK PLAN
MH-103A	LEVEL 01 HVAC DUCTWORK PLAN - BID ALTERNATE 1
MH-104	ROOF LEVEL HVAC PLAN
MH-201	LOWER LEVEL HVAC PIPING PLAN
MH-202	GROUND LEVEL HVAC PIPING PLAN
MH-203	LEVEL 01 HVAC PIPING PLAN
MH-203A	LEVEL 01 HVAC PIPING PLAN - BID ALTERNATE 1
MH-301	ENLARGED PLANS AND SECTIONS
MH-501	SCHEDULES
MH-502	SCHEDULES
MH-503	SCHEDULES
MH-601	FLOW AND CONTROL DIAGRAMS
MH-602	FLOW AND CONTROL DIAGRAMS
MH-603	FLOW AND CONTROL DIAGRAMS
MH-604	FLOW AND CONTROL DIAGRAMS
MH-701	DETAILS
MH-702	DETAILS
MH-703	DETAILS



THIS STAMP IS FOR FIRE PROTECTION PLUMBING AND MECHANICAL DRAWINGS

ELECTRICAL

EP-001	LEGENDS, SYMBOLS & ABBREVIATIONS
EP-002	LEGENDS, SYMBOLS & ABBREVIATIONS
ED-101	ELECTRICAL SITE PLAN - DEMOLITION
ED-102	GROUND LEVEL AND FIRST LEVEL PLAN - DEMOLITION
EL-101	LOWER LEVEL LIGHTING PLAN
EL-102	GROUND LEVEL LIGHTING PLAN
EL-103	LEVEL ONE LIGHTING PLAN
EL-103A	LEVEL ONE LIGHTING PLAN - BID ALTERNATE 1
EL-104	ROOF LEVEL LIGHTING PLAN
EL-501	LIGHTING DETAILS
EL-502	LIGHTING SCHEDULE
EP-101	LOWER LEVEL POWER PLAN
EP-102	GROUND LEVEL POWER PLAN
EP-103	LEVEL ONE POWER PLAN
EP-103A	LEVEL ONE POWER PLAN - BID ALTERNATE 1
EP-104	ROOF LEVEL POWER PLAN
EP-401	ENLARGED PLANS
EP-511	EQUIPMENT CONNECTION SCHEDULE
EP-512	FEEDER SCHEDULES AND DETAILS
EP-601	GROUNDING RISER DIAGRAM AND DETAILS
EP-701	ONE-LINE DIAGRAM
EP-801	PANEL SCHEDULES
EP-802	PANEL SCHEDULES
ES-101	ELECTRICAL SITE PLAN
ES-101A	ELECTRICAL SITE PLAN - BID ALTERNATE 3
ES-401	SITE ENLARGED PLAN
ES-402	TECHNOLOGY SITE ENLARGED PLAN
EY-101	LOWER LEVEL SYSTEMS PLAN
EY-102	GROUND LEVEL SYSTEM PLAN
EY-103	LEVEL ONE SYSTEMS PLAN
EY-103A	LEVEL ONE SYSTEMS PLAN - BID ALTERNATE 1
EY-501	SYSTEMS DETAILS
EY-502	SYSTEMS DETAILS
EY-601	NURSE CALL RISER DIAGRAM



THIS STAMP IS FOR ELECTRICAL DRAWINGS

1	FINAL BID PACKAGE	12/14/15
Revisions:		Date

CONSULTANTS:


Landmark Engineering Group, Inc. Civil Engineer 2834 104th Street Urbana, IA 50322 515.221.1322	Gateway Geotechnical, LLC Geotechnical Engineer 17738 Edison Avenue Chesterfield, MO 63005 636.532.7747	SWT Design Landscape Architect 7722 Big Bend Boulevard St. Louis, MO 63119 314.644.5700	Himman Consulting Engineers, Inc. Physical Security One Bush Street, Suite 510 San Francisco, CA 94104 415.621.4423	The Schachinger Group Elevator 4255 Stony Creek Drive Fort Collins, CO 80525 970.608.2253
SidePlate Steel Frame 25909 Pala, Ste 200, 92691 Mission Viejo, CA 949.305.7889				

ARCHITECT/ENGINEERS:

CANNONDESIGN

© CannonDesign 2014
All rights reserved. No part of this document may be reproduced or utilized in any form, without prior written authorization by The Cannon Corporation.

Drawing Title	DRAWING INDEX
Approved: Project Director	

Project Title			Project Number 657-351 <small>CANNON DESIGN PROJECT NO. 03850.05</small>		Office of Construction and Facilities Management
John J. Pershing VAMC Clinical & Urgent Care Addition			Building Number		
Location			Drawing Number		 Department of Veterans Affairs
Poplar Bluff, Missouri			GI-002		
Date	Checked	Drawn			
DEC 14, 2015	Checker	Author	Dwg. of		



GENERAL NOTES

1. THE FLOOR PLAN BACKGROUND FOR NEW AND EXISTING CONSTRUCTION IS SHOWN IN GRAY HALF-TONE. DESIGNATIONS FOR FIRE RATED PARTITIONS, SMOKE PARTITIONS AND OTHER CODE COMPLIANCE RELATED INFORMATION ARE SHOWN FULL TONE. REFER TO CONTRACT DRAWINGS TO DETERMINE WHICH COMPONENTS ARE NEW AND WHICH ARE EXISTING.
2. THE FIRE AND SMOKE DESIGNATIONS FOR EXISTING CONSTRUCTION ARE SHOWN FOR REFERENCE ONLY AND ARE BASED ON INFORMATION PROVIDED BY OWNER. THIS INFORMATION HAS NOT BEEN INDEPENDENTLY VERIFIED BY CANNON DESIGN.
3. REFER TO ELECTRICAL DRAWINGS FOR LOCATIONS OF EXIT LIGHTS, EMERGENCY LIGHTS, AND FIRE ALARM SYSTEM.
4. REFER TO FIRE SUPPRESSION DRAWINGS FOR LOCATIONS OF FIRE SUPPRESSION ZONES.
5. AS SPECIFIED IN THE VA FIRE PROTECTION DESIGN MANUAL, THE VA HAS ADOPTED THE NATIONAL FIRE PROTECTION CODES (NFPA) PUBLISHED BY THE NATIONAL FIRE PROTECTION ASSOCIATION (NFPA), WHICH ESTABLISH A MINIMUM ACCEPTABLE LEVEL OF LIFE SAFETY AND PROPERTY PROTECTION. LIFE SAFETY REQUIREMENTS ARE SPECIFICALLY ADDRESSED IN THE NFPA 101, LIFE SAFETY CODE. FIRE PROTECTION FEATURES NOT ADDRESSED BY THE NFPA SHALL BE DESIGNED TO COMPLY WITH THE REQUIREMENTS OF THE 2012 EDITION OF THE INTERNATIONAL BUILDING CODE (IBC). UNLESS IBC REFERENCES ARE SPECIFICALLY ADDRESSED, ASSUME ALL CODE REQUIREMENTS BASED ON NFPA STANDARDS.
6. MAXIMUM TRAVEL DISTANCE TO REACH A FIRE EXTINGUISHER: 75 FEET IN ANY DIRECTION
7. UL SYSTEM DESIGN INFORMATION:
- FLOOR ASSEMBLY: CURTAIN WALL - CW-S-2061 AND STUD WALL CW-S-1003
- FLOOR SLAB: D016
- SHIRT WALL: U415, 2HR, 1HR
- PARTITION: U411, 2 HR
- PARTITION: U465, 1 HR
- WALL INFILL: U405, 2HR
- ROOF DECK: P819
- COLUMN: WIDE FLANGE - X722 AND TUBE - X752
8. TEMPORARY PARTITIONS BETWEEN THE CONSTRUCTION AREA AND THE EXISTING BUILDING SHALL BE 1 HOUR RATED SLAB TO SLAB BARRIERS

APPLICABLE CODES, STANDARDS, AND ORDINANCES:

VA FIRE PROTECTION DESIGN MANUAL - 6TH EDITION
NATIONAL FIRE CODES (LSC) (NFC) BY NATIONAL FIRE PROTECTION ASSOCIATION
LATEST EDITIONS:
- NFPA 101 - LIFE SAFETY CODE (2012 EDITION)
- NFPA 220 - TYPES OF BUILDING CONSTRUCTION (2012 EDITION)
INTERNATIONAL BUILDING CODE (IBC) BY INTERNATIONAL CODE COUNCIL (2012 EDITION)
ARCHITECTURAL BARRIERS ACT ACCESSIBILITY STANDARD (ABAS) FOR FEDERAL FACILITIES
VA BARRIER FREE DESIGN GUIDE
MISSION CRITICAL PHYSICAL SECURITY DESIGN MANUAL FOR VA FACILITIES, JULY 2007

BUILDING AREA:

THE ALLOWABLE AREA PER FLOOR FOR THE SELECTED CONSTRUCTION TYPE IS GREATER THAN THE ACTUAL PER FLOOR AREA.

ALLOWABLE AREA 23,000 sf (IBC)
LOWER LEVEL TOTAL FLOOR AREA = 7,396 sf
GROUND LEVEL TOTAL FLOOR AREA = 300 sf
LEVEL 01 TOTAL FLOOR AREA = 6,700

GENERAL INFORMATION:

BUILDING IS FULLY SPRINKLERED
AUTOMATIC SPRINKLER SYSTEM: NFPA 13
FIRE ALARM SYSTEM: NFPA 72
STANDPIPE SYSTEM: NFPA 14

OCCUPANCY:
OCCUPANCY CLASSIFICATION:
AMBULATORY HEALTHCARE, 2012 NFPA 101

CONSTRUCTION CLASSIFICATION:

CONSTRUCTION TYPE: NFPA 101 TABLE 201.6.1 TYPE II (111)

SMOKE/FIRE COMPARTMENT SUMMARY

MAXIMUM AREA OF EACH SMOKE COMPARTMENT: 22,500sf (NFPA 20.3.7.3)
MINIMUM 2 COMPARTMENTS
LOWER LEVEL TOTAL FLOOR AREA = 7,396 sf
GROUND LEVEL TOTAL FLOOR AREA = 300 sf
LEVEL 01 TOTAL FLOOR AREA = 6,700

MAXIMUM TRAVEL DISTANCES:

AMBULATORY HEALTHCARE - TRAVEL DISTANCES
ALLOWABLE MAXIMUM DISTANCE FROM POINT IN ANY ROOM TO EXIT ACCESS DOOR = 200'
(NFPA 20.2.6.2.1)
ACTUAL MAXIMUM - REFER TO PLANS

COMMON PATH OF TRAVEL (CP)
ALLOWABLE MAXIMUM = 100' (38.2.5.3.1)
ACTUAL MAXIMUM - REFER TO PLANS

EXIT ACCESS TRAVEL DISTANCE
ALLOWABLE MAXIMUM = 300' (NFPA 38.2.6.3)
ACTUAL MAXIMUM - REFER TO PLANS

DEAD ENDS
"B" USE, FULLY SPRINKLED - (NFPA 38.2.5.1, IBC 1017.3, EXCEPT #2)
ALLOWABLE MAXIMUM = 50'

BUILDING HEIGHT:

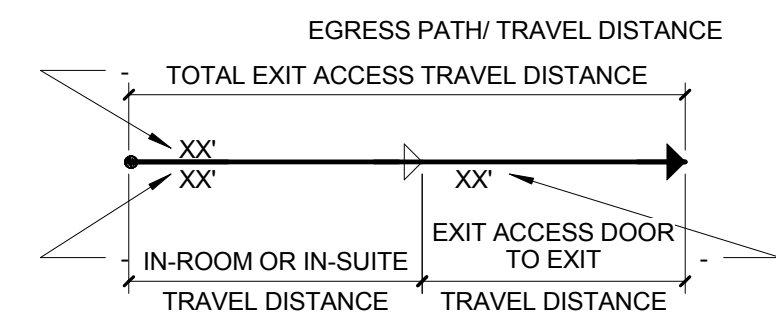
CODE & EDITION	MEASURE	PERMITTED FOR CONSTRUCTION TYPE I-B	SPRINKLER PERMITTED FOR BONUS	HEIGHT ADJUSTED FOR BONUS	ACTUAL HEIGHT
IBC 2012	STORIES HEIGHT*	3	1	4	30'-0"

FIRE RESISTANCE RATINGS

ITEM	FIRE RATING
COLUMNS SUPPORTING MORE THAN 1 FLOOR SUPPORTING 1 FLOOR ONLY SUPPORTING ROOF ONLY	1 HRS 1 HRS 1 HRS
BEAMS, GIRDERS, TRUSSES AND ARCHES SUPPORTING MORE THAN 1 FLOOR SUPPORTING 1 FLOOR ONLY SUPPORTING ROOF ONLY	1 HRS 1 HRS 1 HRS
EXTERIOR BEARING WALLS SUPPORTING MORE THAN 1 FLOOR SUPPORTING 1 FLOOR ONLY SUPPORTING ROOF ONLY	1 HRS 1 HRS 1 HRS
INTERIOR BEARING WALLS SUPPORTING MORE THAN 1 FLOOR SUPPORTING 1 FLOOR ONLY SUPPORTING ROOF ONLY	1 HRS 1 HRS 1 HRS
EXTERIOR NON-BEARING WALLS SEPARATION >10"	0 HRS
INTERIOR BEARING WALLS	0 HRS
FLOOR - CEILING ASSEMBLIES	1 HRS
ROOF - CEILING ASSEMBLIES	1 HR
MISCELLANEOUS RATINGS:	
NFPA 101 (6.6.5, 7.1.3.2)	
SHAFT ENCLOSURES 4 OR MORE STORIES <4 STORIES	2 HRS 1 HR
CORRIDORS	0 HRS
VERTICAL EXIT ENCLOSURES 4 OR MORE STORIES <4 STORIES	2 HRS 1 HR
SMOKE BARRIERS (20.3.7.5)	1 HR
NFPA 5000 (7.3.2.1) - FIRE RESISTANCE RATING	
EXTERIOR WALLS	
HORIZONTAL SEPARATION 0 TO 5 - EXPOSURE FROM EXTERIOR AND INTERIOR	1 HR
5 TO 10 - EXPOSURE FROM INTERIOR SIDE ONLY	1 HR

LEGEND

- S—S—S— ABLE TO RESIST PASSAGE OF SMOKE
◆◆◆◆◆ 1 HOUR FIRE
◆◆◆◆◆ 1 HOUR FIRE / SMOKE BARRIER
◆◆◆◆◆ 2 HOUR FIRE
◆◆◆◆◆ 2 HOUR FIRE / SMOKE BARRIER
- [FEC] FIRE EXTINGUISHER CABINET
[Y] FIRE DEPARTMENT CONNECTION



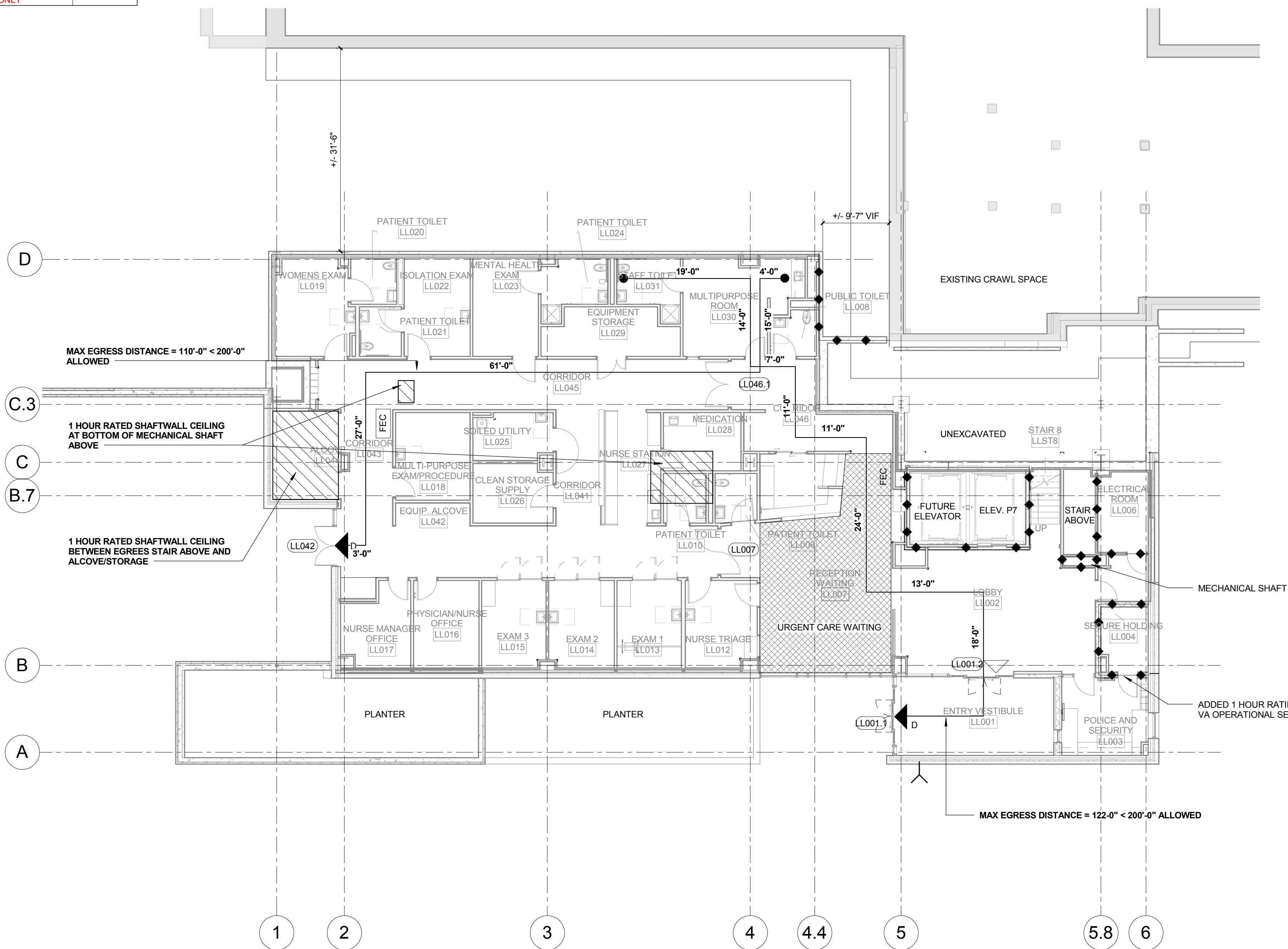
- ▶ (1125A) EXIT
▶ (1125A) EXIT DISCHARGE

EGRESS CAPACITY

DOOR NO.	WIDTH	WIDTH OCC	OCC CAPACITY	OCC LOAD	COMPLIES
1202	3'-6"	0.2"	210	120	Yes
1234	3'-6"	0.2"	210	120	Yes
G080.3	3'-1 1/8"	0.2"	185	165	Yes
LL001.1	9'-0 (4'-0" CLR)	0.2"	240	80	Yes
LL001.2	10'-(4'-0" CLR)	0.2"	240	80	Yes
LL007	7'-0"	0.2"	420	80	Yes
LL042	6'-0"	0.2"	360	80	Yes
LL046.1	7'-0"	0.2"	240	80	Yes
ST04A	3'-4"	0.2"	200	168	Yes
ST09.1	3'-4"	0.2"	200	120	Yes
ST09.2	3'-6"	0.2"	210	120	Yes

OCCUPANT LOAD (2012 NFPA 101, TABLE 7.3.1.2)

SPACE	AREA	TYPE	FUNCTION	BFOCC	FIXED OCC #	TOTAL OCCUPANTS
LOBBY, ENTRY, SECURITY	1,849 SF	B	Ambulatory Healthcare	100		19
URGENT CARE	5,441 SF	B	Ambulatory Healthcare	100		55
WAITING	545 SF	A-u	Assembly - unconcentrated	15		6
LOWER LEVEL	7,835 SF					80
ELEVATOR MACHINE ROOM	166 SF	B	Ambulatory Healthcare	100		2
EYE CLINIC WAITING	634 SF	A-u	Assembly - unconcentrated	15	0	43
STAIR 4A	69 SF	B	Ambulatory Healthcare	100		1
STAIR 9	43 SF	B	Ambulatory Healthcare	100		1
GROUND LEVEL	932 SF					47
DENTAL CLINIC	5,798 SF	B	Ambulatory Healthcare	100	0	58
DENTAL WAITING	301 SF	A-u	Assembly - unconcentrated	15		21
LOBBY/WAITING	540 SF	A-u	Assembly - unconcentrated	15		36
STAIR 8	139 SF	B	Ambulatory Healthcare	100		2
STAIR 9	215 SF	B	Ambulatory Healthcare	100		3
LEVEL 01	6,993 SF					120
Grand total	15,760 SF					247



4F LOWER LEVEL FLOOR PLAN
3/32" = 1'-0" REF 5C / AS-201

CONSTRUCTION DOCUMENTS - FINAL BID DOCUMENTS

1

Revisions:

FINAL BID PACKAGE

12/14/15

Date

CONSULTANTS:

Landmark Engineering Group, Inc.
Civil Engineer
2634 104th Street
Urbandale, IA 50322
515.221.1322

Gateway Geotechnical, LLC
Geotechnical Engineer
17736 Edison Avenue
Chesterfield, MO 63005
636.532.7747

SWT Design
Landscape Architect
7722 Big Bend Boulevard
St. Louis, MO 63119
314.644.5700

Himman Consulting
Physical Security
One Bush Street, Suite 510
San Francisco, CA 94104
415.621.4423

The Schachinger Group
Elevator
4255 Stony Creek Drive
Fort Collins, CO 80525
970.608.2263

ARCHITECT/ENGINEERS:

CANNONDESIGN

© CannonDesign 2014
All rights reserved. No part of this document may be reproduced or utilized in any form, without prior written authorization by The Cannon Corporation.

Drawing Title

LOWER LEVEL CODE COMPLIANCE PLAN

Approved: Project Director

Project Title

John J. Pershing VAMC
Clinical & Urgent Care Addition

Location

Poplar Bluff, Missouri

Date

DEC 14, 2015

Checked

Checker

Drawn

Author

Project Number

657-351
CANNON DESIGN PROJECT NO. 03850.05

Drawing Number


GC-101

Dwg. of

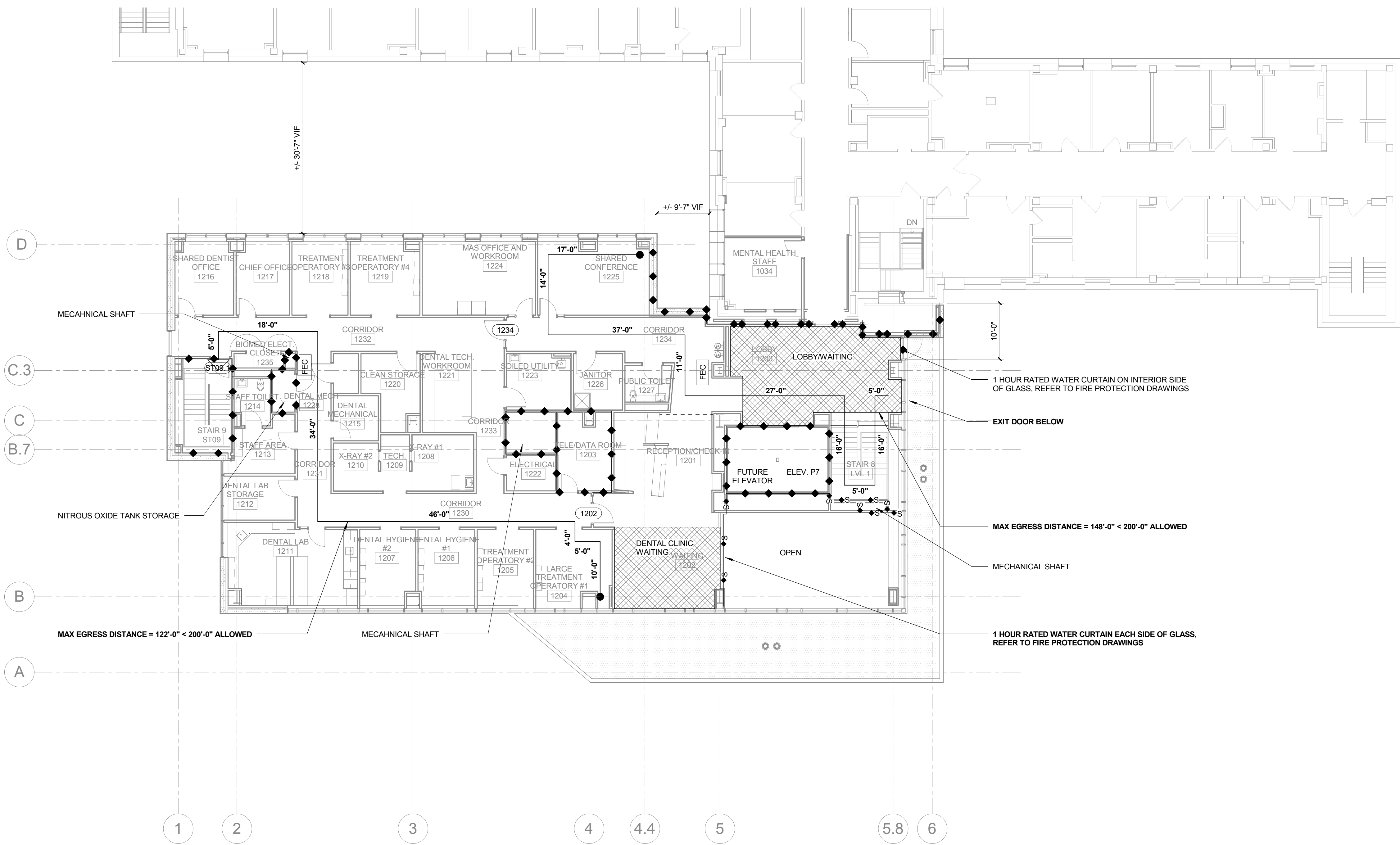
Office of Construction and Facilities Management

Department of Veterans Affairs

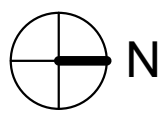


		CONSULTANTS:				ARCHITECT/ENGINEERS:		Drawing Title		Project Title		Project Number		Office of Construction and Facilities Management							
		Landmark Engineering Group, Inc. Civil Engineer 2834 104th Street Urbandale, IA 50322		Gateway Geotechnical, LLC Physical Security Chesterfield, MO 63005 636.632.7747		SWT Design Landscape Architect 17736 Edison Avenue St. Louis, MO 63119 314.644.5700		Hinman Consulting Engineers, Inc. Physical Security One Bush Street, Suite 510 San Francisco, CA 94104 415.621-4423		The Schachinger Group Elevator 4255 Storey Creek Drive Fort Collins, CO 80525 703.608.2263		John J. Pershing VAMC Clinical & Urgent Care Addition		657-351 CANNON DESIGN PROJECT NO. 03850.05 Building Number							
		SidePlate Steel Frame 25909 Praire, Ste 200, 92691 Mission Viejo, CA 949.305.7889								Approved: Project Director		Location Poplar Bluff, Missouri		Drawing Number							
												Date DEC 14, 2015		Checked Checker		Drawn Author		GC-102 Dwg. of		 Department of Veterans Affairs	
1 Revisions:		FINAL BID PACKAGE		12/14/15 Date						© CannonDesign 2014 All rights reserved. No part of this document may be reproduced or utilized in any form, without prior written authorization by The Cannon Corporation.											

one eighth inch = one foot
one quarter inch = one foot
one half inch = one foot
three eighths inch = one foot
one inch = one foot
one and one half inches = one foot
two inches = one foot
three inches = one foot
four inches = one foot
five inches = one foot
six inches = one foot
seven inches = one foot
eight inches = one foot
nine inches = one foot
ten inches = one foot
eleven inches = one foot
twelve inches = one foot
thirteen inches = one foot
fourteen inches = one foot
fifteen inches = one foot
sixteen inches = one foot
seventeen inches = one foot
eighteen inches = one foot
nineteen inches = one foot
twenty inches = one foot
twenty one inches = one foot
twenty two inches = one foot
twenty three inches = one foot
twenty four inches = one foot
twenty five inches = one foot
twenty six inches = one foot
twenty seven inches = one foot
twenty eight inches = one foot
twenty nine inches = one foot
thirty inches = one foot
thirty one inches = one foot
thirty two inches = one foot
thirty three inches = one foot
thirty four inches = one foot
thirty five inches = one foot
thirty six inches = one foot
thirty seven inches = one foot
thirty eight inches = one foot
thirty nine inches = one foot
forty inches = one foot
forty one inches = one foot
forty two inches = one foot
forty three inches = one foot
forty four inches = one foot
forty five inches = one foot
forty six inches = one foot
forty seven inches = one foot
forty eight inches = one foot
forty nine inches = one foot
fifty inches = one foot
fifty one inches = one foot
fifty two inches = one foot
fifty three inches = one foot
fifty four inches = one foot
fifty five inches = one foot
fifty six inches = one foot
fifty seven inches = one foot
fifty eight inches = one foot
fifty nine inches = one foot
sixty inches = one foot
sixty one inches = one foot
sixty two inches = one foot
sixty three inches = one foot
sixty four inches = one foot
sixty five inches = one foot
sixty six inches = one foot
sixty seven inches = one foot
sixty eight inches = one foot
sixty nine inches = one foot
seventy inches = one foot
seventy one inches = one foot
seventy two inches = one foot
seventy three inches = one foot
seventy four inches = one foot
seventy five inches = one foot
seventy six inches = one foot
seventy seven inches = one foot
seventy eight inches = one foot
seventy nine inches = one foot
eighty inches = one foot
eighty one inches = one foot
eighty two inches = one foot
eighty three inches = one foot
eighty four inches = one foot
eighty five inches = one foot
eighty six inches = one foot
eighty seven inches = one foot
eighty eight inches = one foot
eighty nine inches = one foot
ninety inches = one foot
ninety one inches = one foot
ninety two inches = one foot
ninety three inches = one foot
ninety four inches = one foot
ninety five inches = one foot
ninety six inches = one foot
ninety seven inches = one foot
ninety eight inches = one foot
ninety nine inches = one foot
one hundred inches = one foot

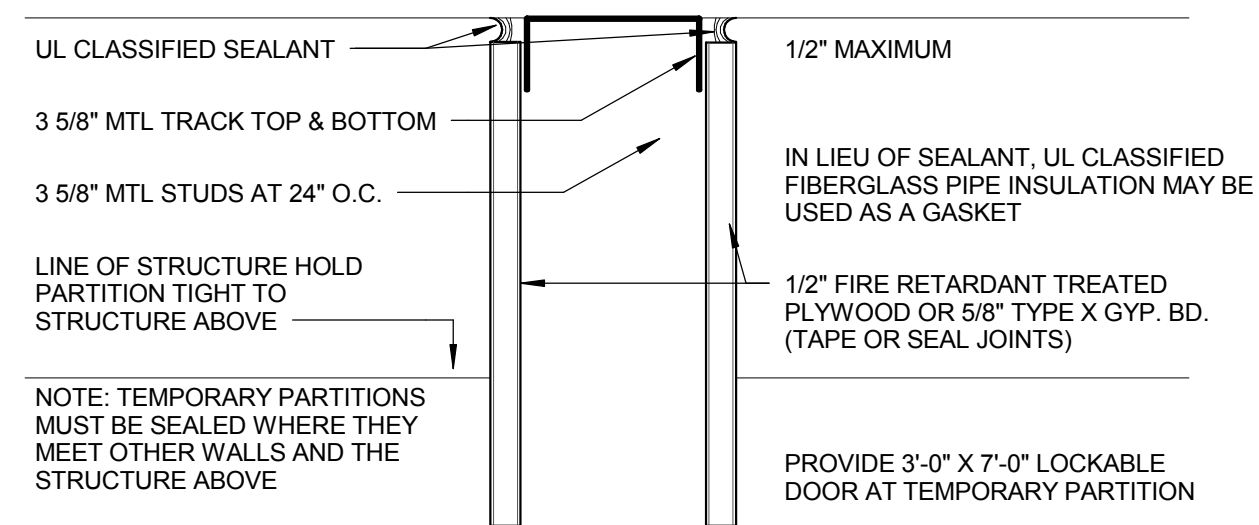
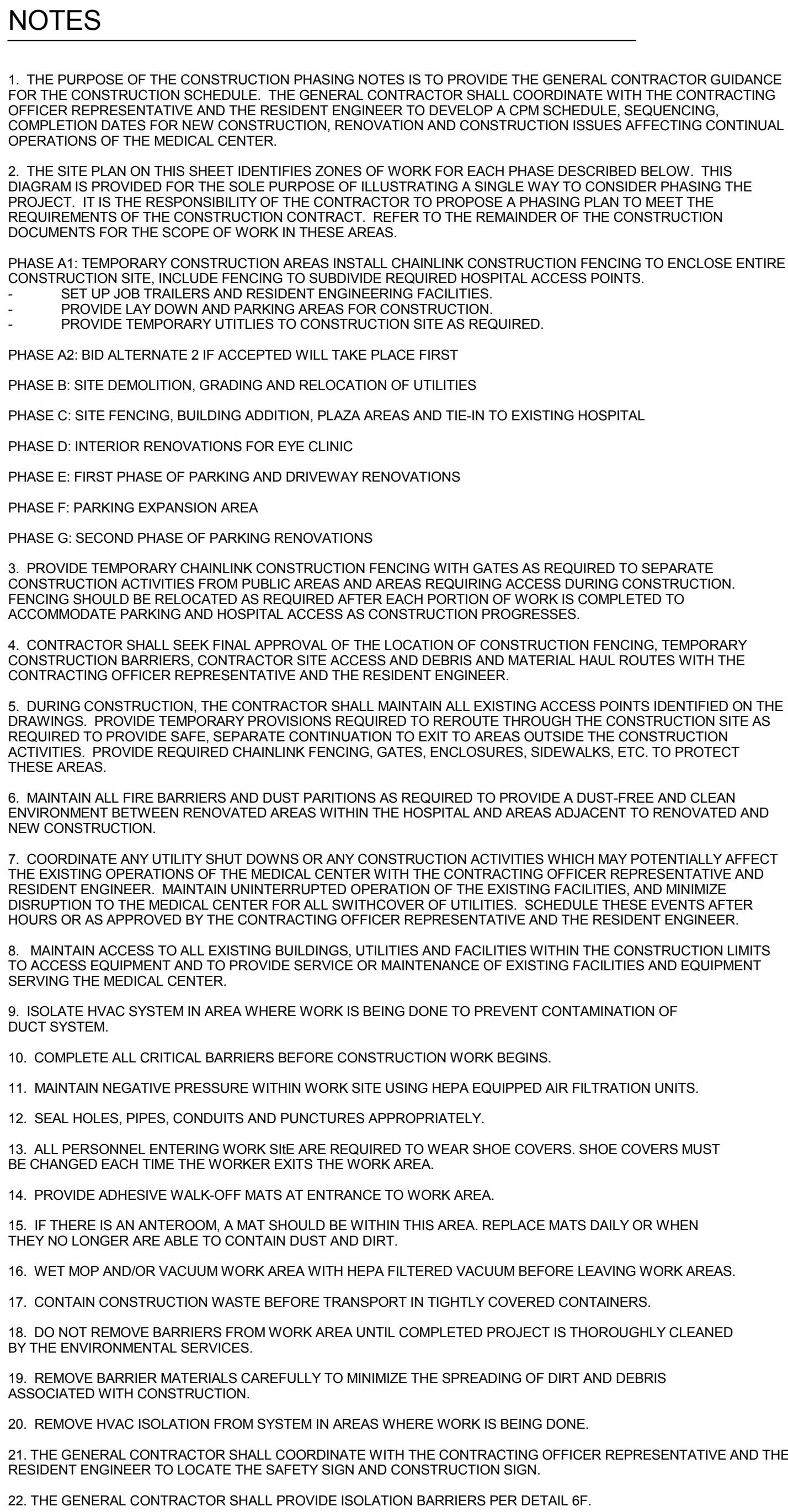


5F LEVEL 01 FLOOR PLAN
3/32" = 1'-0" REF 4B / AI-802



CONSTRUCTION DOCUMENTS - FINAL BID DOCUMENTS

		CONSULTANTS:						ARCHITECT/ENGINEERS:		LEVEL 01 CODE COMPLIANCE PLAN		John J. Pershing VAMC Clinical & Urgent Care Addition		657-351 CANNON DESIGN PROJECT NO. 03850.05		Office of Construction and Facilities Management			
		Landmark Engineering Group, Inc. Civil Engineer 2834 104th Street Urbandale, IA 50322 515.221.1322						CANNON DESIGN		Approved: Project Director		Poplar Bluff, Missouri		Building Number					
		Gateway Geotechnical, LLC Geotechnical Engineer 17736 Edison Avenue Chesterfield, MO 63005 636.532.7747						© CannonDesign 2014 All rights reserved. No part of this document may be reproduced or utilized in any form, without prior written authorization by The Cannon Corporation.				DEC 14, 2015		Checked Checker					
		SWT Design Landscape Architect 7722 Big Bend Boulevard St. Louis, MO 63119 314.644.5700										Drawn Author		Dwg. of					
		Hinman Consulting Engineers, Inc. Physical Security One Bush Street, Suite 510 San Francisco, CA 94104 415.621.4423												GC-103					
		The Schachinger Group Elevator 4255 Stony Creek Drive Fort Collins, CO 80525 970.608.2263																	
		SidePlate Steel Frame 25909 Pala, Ste 200, 92691 Mission Viejo, CA 949.305.7889														Department of Veterans Affairs			



6F VA STANDARD ISOLATION BARRIER

CONSTRUCTION DOCUMENTS - FINAL BID DOCUMENTS

-



Department of
Veterans Affairs