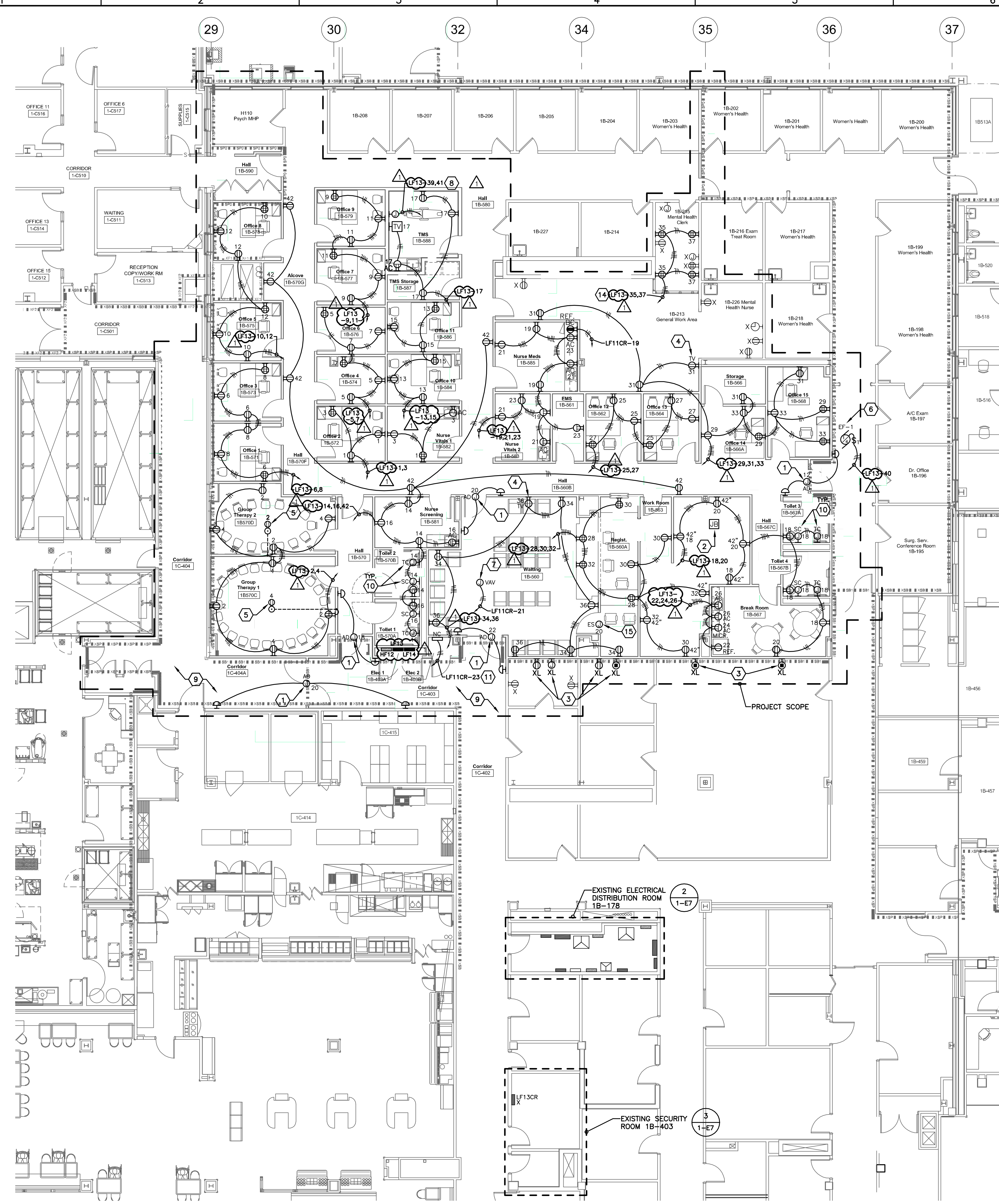


three inches = one foot
one and one half inches = one foot
one inch = one foot
three quarters inch = one foot
one half inch = one foot
three eighths inch = one foot
one quarter inch = one foot
one eighth inch = one foot



FIRST FLOOR ELECTRICAL ROOM PLAN #1B-178
SCALE: 1/4" = 1'-0"

FIRST FLOOR ELECTRICAL ROOM PLAN #1B-178
SCALE: 1/4" = 1'-0"

GENERAL NOTES:

- CLOSELY COORDINATE EXACT LOCATION OF ALL OUTLETS WITH ARCHITECTURAL ELEVATIONS. ADJUST LOCATIONS AND/OR MOUNTING HEIGHTS WHERE NECESSARY TO AVOID INTERFERENCE WITH FURNITURE, FIXED CASEWORK, EQUIPMENT, ETC. VERIFY ALL CHANGES PRIOR TO ROUGH-IN. PROVIDE NEW UPDATED, TYPED PANELBOARD SCHEDULES FOR ALL PANELBOARDS MODIFIED DURING CONSTRUCTION.
- SHARED NEUTRALS ARE NOT PERMITTED FOR BRANCH CIRCUITS EXCEPT WHERE FEEDING PRE-WIRED FURNITURE WITH MULTI-WIRE CIRCUITS.

POWER PLAN CODED NOTES:

- CONNECT NEW AUTODOOR OPERATOR COMPLETE TO 120V LIFE SAFETY PANELBOARD 'LF11LS' CIRCUIT AS INDICATED VIA 3/4" - 2#10 AND 1#10EG PER MANUFACTURER'S WIRING DIAGRAMS. COORDINATE AUTODOOR OPERATION WITH SECURITY SYSTEM SUCH THAT AUTODOOR INTERFACES WITH SECURITY DEVICES AT DOOR LOCATION. EXTEND CIRCUIT TO LATCH RETRACTION/ELECTRIC STRIKE POWER SUPPLIES WHERE NECESSARY. REFER TO PARTIAL FIRST FLOOR TECHNOLOGY PLAN FOR DOOR SECURITY LOCATIONS AND INFORMATION.
- SPLICE BOX ABOVE FINISHED CEILING FOR CIRCUITS FROM DEMOLISHED PANEL RH12 TO BE REFEED BY AVAILABLE CIRCUITS IN PANELBOARDS 'RF11CR' AND 'LF11CR' IN ELECTRICAL ROOM 1B-178. REFER TO 'BRANCH CIRCUIT RECONNECTION TABLE' FOR ADDITIONAL INFORMATION AND WORK REQUIREMENTS.
- APPROXIMATE NEW LOCATION OF EXISTING DUPLEX RECEPTACLE OR FURNITURE FEED. COORDINATE EXACT LOCATION WITH VAMC COTR. SPLICE AND EXTEND EXISTING CIRCUITS AS NECESSARY TO ACCOMMODATE NEW LOCATION AND RECONNECT COMPLETE PER MANUFACTURER'S WIRING DIAGRAMS.
- VERIFY EXACT MOUNTING HEIGHT AND LOCATION WITH ARCHITECT PRIOR TO ROUGH-IN. INSTALL ADJACENT TO CATV BROADBAND OUTLET.
- ROUTE 120V NORMAL POWER CIRCUIT FROM ABOVE FIRST FLOOR FINISHED CEILING DOWN NEAREST STUD WALL TO BELOW FIRST FLOOR AND OVER TO FIRE-RATED FLOOR BOX. CONNECT FLOOR BOX COMPLETE TO CIRCUIT INDICATED.
- EXHAUST FAN "EF-1" - 1/3HP - 120V. APPROXIMATE LOCATION OF EXHAUST FAN ON ROOF. COORDINATE EXACT LOCATION WITH M.C. CONNECT UNIT COMPLETE TO CIRCUIT INDICATED VIA 3/4" - 2#12 AND 1#12EG PER MANUFACTURER'S WIRING DIAGRAMS.
- PROVIDE 120V-1# CIRCUIT ABOVE FINISHED CEILING FOR CONNECTION TO VAV BOX. COORDINATE LOCATION OF VAV BOXES WITH M.C. AND CONNECT COMPLETE TO CIRCUIT INDICATED VIA 3/4" - 2#12 AND 1#12EG PER MANUFACTURER'S WIRING DIAGRAMS. TYPICAL FOR ALL VAV BOXES WITHIN THE SCOPE OF THIS PROJECT.
- TMS EQUIPMENT - PROVIDE JUNCTION BOX OR RECEPTACLE FOR TMS EQUIPMENT POWER FEED. VERIFY VOLTAGE AND RECEPTACLE REQUIREMENTS WITH OWNER PRIOR TO ROUGH-IN.
- COORDINATE WORK IN CORRIDORS #1C-403 AND #1C-404 WITH CONSTRUCTION SCHEDULE AS DEFINED ON ARCHITECTURAL PLANS. TEMPORARILY CONNECT ELECTRICAL CIRCUITS IN THIS CORRIDOR TO PANELBOARDS IN ELECTRICAL ROOM #1B-178 UNTIL COMPLETION OF NEW ELECTRICAL CLOSET #1B-570E.
- PROVIDE 120V NORMAL POWER VIA CIRCUIT INDICATED FOR AUTOMATIC TOILET AND SINK CONTROLS. CONTROLS AND LOW-VOLTAGE TRANSFORMER SHALL BE PROVIDED BY M.C. COORDINATE EXACT LOCATION WITH M.C. PRIOR TO ROUGH-IN. TYPICAL OF ALL TOILET ROOMS.
- PROVIDE 120V-1# CRITICAL POWER CIRCUIT AS INDICATED ABOVE FINISHED CEILING VIA 3/4" - 2#12 AND 1#12EG FOR CONNECTION TO NURSE CALL POWER SUPPLY. REFER TO TECHNOLOGY PLANS FOR ADDITIONAL INFORMATION AND WORK REQUIREMENTS.
- PROVIDE 120V-1# LIFE SAFETY POWER CIRCUIT AS INDICATED VIA 3/4" - 2#12 AND 1#12EG FOR CONNECTION TO NEW PACING AMPLIFIER. REFER TO TECHNOLOGY PLANS FOR ADDITIONAL INFORMATION AND WORK REQUIREMENTS.
- PROVIDE 120V-1# EMERGENCY CRITICAL POWER CIRCUIT AS INDICATED VIA 3/4" - 2#12 AND 1#12EG FOR CONNECTION TO SECURITY SYSTEM POWER SUPPLY. REFER TO TECHNOLOGY PLANS FOR ADDITIONAL INFORMATION AND WORK REQUIREMENTS.
- COORDINATE EXACT LOCATION OF RECEPTACLES IN MENTAL HEALTH CLERK OFFICE WITH VA COTR PRIOR TO ROUGH-IN.
- PROVIDE JUNCTION BOX WITH 120V LIFE SAFETY PANELBOARD 'LF11LS' CIRCUIT AS INDICATED VIA 3/4" - 2#10 AND 1#10EG ABOVE PER MANUFACTURER'S WIRING DIAGRAMS FOR ELECTRIC STRIKE POWER SUPPLY. REFER TO PARTIAL FIRST FLOOR TECHNOLOGY PLAN FOR DOOR SECURITY LOCATIONS AND INFORMATION.

FULLY SPRINKLERED

CONSULTANTS:		ARCHITECT:		Drawing Title		Project Title		Project Number		Office of Facilities Management Department of Veterans Affairs	
FREDRICK, FREDRICK & HELLER ENGINEERS, INC. 672 EAST ROYALTON ROAD BROADVIEW HTS., OHIO 44147 TEL: (440) 546-9696 FAX: (440) 546-9696		Barber & Hoffman, Inc. 1100 West 9th Street Cleveland, OH 44113-1003 216-875-0100 / (F) 216-875-0111 barberhoffman.com		Perspectus architecture 13212 Shaker Square Suite 204 Cleveland, Ohio 44120 P. 216.752.1800 F. 216.752.3833		RENOVATE MENTAL HEALTH CLINIC		541-13-101			
Addendum No. 1 Final For Bid Revisions:				Approved: Project Director		Location VAMC - WADE PARK		Building Number 1			
6-04-12 4-26-12 Date						Date 4-26-12		Drawing Number 1-E7 Dwg. of			