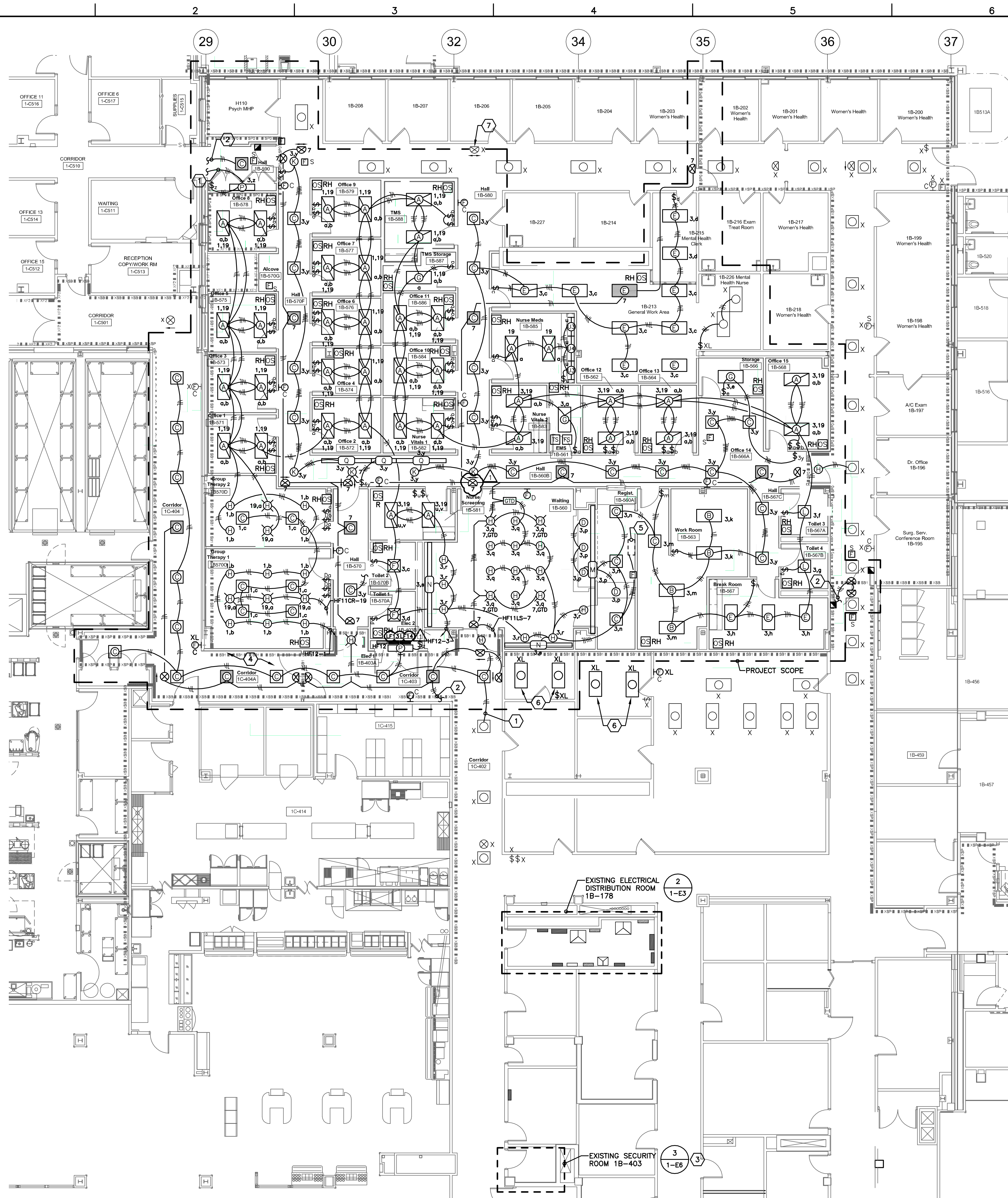


three inches = one foot
one and one half inches = one foot
one inch = one foot
three quarters inch = one foot
one half inch = one foot
three eighths inch = one foot
one quarter inch = one foot
one eighth inch = one foot

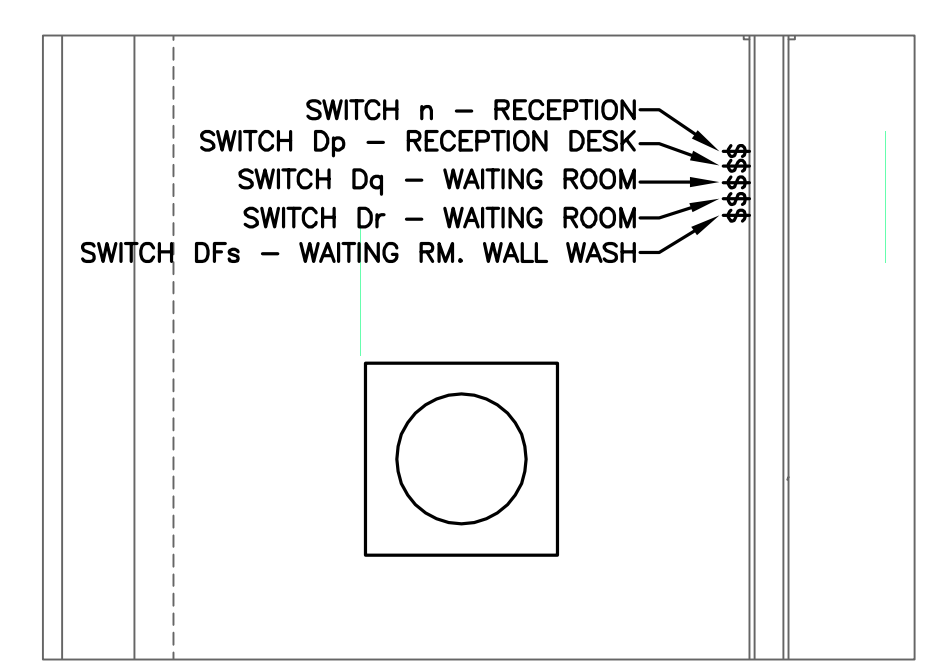


PARTIAL FIRST FLOOR LIGHTING AND FIRE ALARM PLAN
SCALE: 1/8" = 1'-0"
1

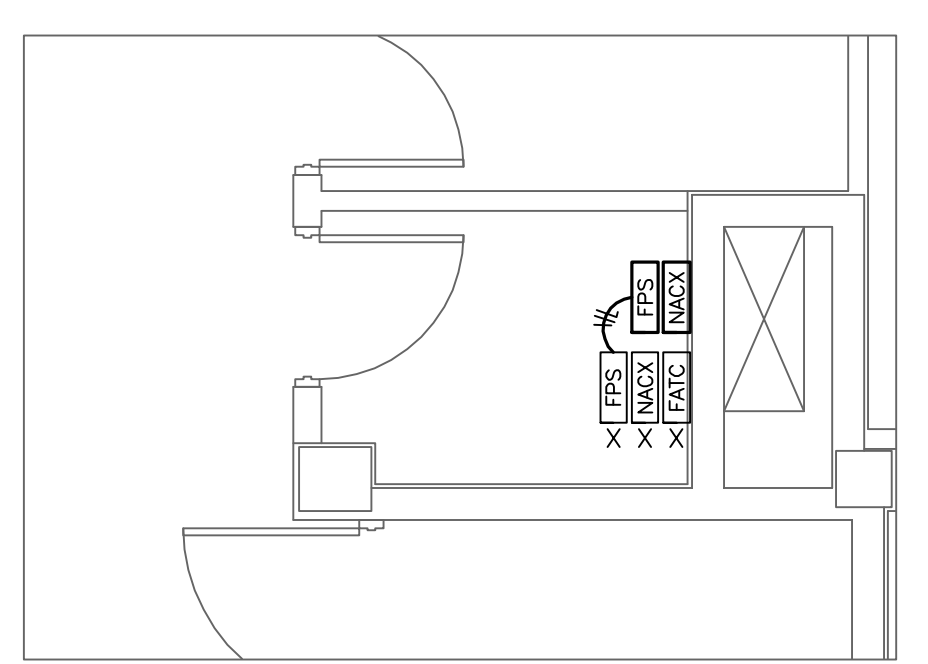
- ### GENERAL FIRE ALARM SYSTEM NOTES
1. ALL FIRE ALARM SYSTEM DEVICES SHALL BE CONNECTED COMPLETE TO THE MAIN FIRE ALARM SYSTEM CONTROL PANEL IN ACCORDANCE WITH ENGINEER APPROVED MANUFACTURER'S SHOP DRAWING WIRING DIAGRAMS AND DETAILS.
 2. ALL FIRE ALARM SYSTEM CONDUCTORS SHALL BE INSTALLED IN 3/4" MINIMUM SIZE CONDUIT SYSTEM.
 3. IN GENERAL ALL MANUAL PULL STATIONS SHALL BE INSTALLED AT 48" ABOVE FINISHED FLOOR. MANUAL PULL STATIONS SHALL BE INSTALLED WITHIN 5'-0" OF ALL EXIT DOORWAY OPENINGS AT EACH EXIT ON EACH FLOOR. ADDITIONAL MANUAL PULL STATIONS SHALL BE PROVIDED SO THAT THE TRAVEL DISTANCE TO THE NEAREST PULL STATION WILL NOT EXCEED 200' MEASURED HORIZONTALLY ON THE SAME FLOOR.
 4. ALL AUDIO/VISUAL AND VISUAL ONLY FIRE ALARM SYSTEM DEVICES SHALL BE ADA TYPE. IN ALL CASES VISUAL DEVICES SHALL BE WALL MOUNTED AT 80" ABOVE FINISHED FLOOR. VISUAL DEVICES SHALL BE LOCATED NOT MORE THAN 15' FROM THE END OF ALL CORRIDORS WITH A SEPARATION NOT GREATER THAN 100' BETWEEN DEVICES. AUDIO DEVICES SHALL BE INSTALLED THROUGHOUT THE BUILDING TO ATTAIN MINIMUM DECEBEL LEVELS REQUIRED BY CODE. COMBINATION AUDIO/VISUAL DEVICES AND ADDITIONAL VISUAL ONLY DEVICES SHALL BE INSTALLED AT LOCATIONS AS INDICATED ON FLOOR PLANS.
 5. IN GENERAL SMOKE DETECTORS SHALL BE INSTALLED ON CEILINGS WITH SPACING NOT TO EXCEED MANUFACTURER'S RECOMMENDATION.
 6. SPRINKLER SYSTEM WATERFLOW ALARM INITIATING DEVICES SHALL BE CONNECTED COMPLETE TO THE FIRE ALARM SYSTEM.
 7. DUCT TYPE SMOKE DETECTORS SHALL BE PROVIDED FOR ALL HVAC RETURN AIR SYSTEMS WITH DESIGN CAPACITY GREATER THAN 2,000 CFM. WHERE RETURN AIR RISERS SERVE TWO OR MORE STORIES, AND ARE PART OF A RETURN AIR SYSTEM HAVING A DESIGN CAPACITY GREATER THAN 15,000 CFM, DUCT DETECTORS SHALL BE PROVIDED AT EACH STORY. COORDINATE EXACT DETECTOR LOCATIONS AND PROVISION OF ADEQUATE DUCT LENGTHS WITH THE MECHANICAL CONTRACTOR PRIOR TO ROUGH-IN.
 8. PROVIDE ALL FIRE ALARM SYSTEM COMPONENTS NECESSARY FOR SHUT DOWN OF HVAC EQUIPMENT BY THE FIRE ALARM SYSTEM WHERE SAME IS REQUIRED.
 9. PROVIDE ALL FIRE ALARM SYSTEM COMPONENTS NECESSARY FOR ELEVATOR CAPTURE BY THE FIRE ALARM SYSTEM WHERE SAME IS REQUIRED.
 10. SMOKE DETECTORS SHALL BE INSTALLED WITHIN 5'-0" OF CENTERLINE OF SMOKE DOORS ON HOLD-OPEN.
 11. SMOKE DETECTORS SHALL NOT BE LOCATED CLOSER THAN 3'-0" FROM AN AIR SUPPLY DIFFUSER.
 12. AUTOMATIC DOORS LOCATED ON A 2-HOUR FIRE RATED WALL SHALL HAVE A FIRE ALARM INTERFACE THAT INTERRUPTS 120V POWER FOR THE AUTOMATIC DOOR OPENER UNDER A FIRE ALARM CONDITION. PROVIDE (1) CONTROL MODULE FROM EACH BUILDING FIRE ALARM SYSTEM IF LOCATED ALONG THE BORDER OF TWO BUILDINGS.

- ### LIGHTING PLAN GENERAL NOTES:
1. REFER TO ARCHITECTURAL REFLECTED CEILING PLAN FOR FINAL LOCATION OF ALL NEW CEILING MOUNTED LIGHTING FIXTURES. CLOSELY COORDINATE LOCATION OF LIGHTING FIXTURES AND SMOKE DETECTORS WITH HVAC DUCTS, DIFFUSERS, SPRINKLERS, PLUMBING, ETC. AND ADJUST LOCATIONS OF SELECTED ELECTRICAL EQUIPMENT IN ACCORDANCE WITH ENGINEER'S INSTRUCTIONS.
 2. REFER TO THE ARCHITECTURAL PLANS FOR EQUIPMENT LAYOUT. CLOSELY COORDINATE THE EXACT LOCATION OF ALL OUTLETS AND DEVICES WITH ARCHITECTURAL ELEVATIONS. ADJUST LOCATIONS AND MOUNTING HEIGHTS WHERE NECESSARY TO PREVENT INTERFERENCE WITH FURNITURE, FIXED CASEWORK, EQUIPMENT, ETC. VERIFY ALL CHANGES PRIOR TO ROUGH-IN.
 3. REFER TO ELECTRICAL DETAILS PLANS FOR OCCUPANCY SENSOR WIRING DIAGRAMS AND PROGRAM SCHEDULE FOR ADDITIONAL INFORMATION.
 4. MOUNT WALL SWITCHES AT LEAST 6" AWAY FROM OPEN DOOR SWING - DO NOT MOUNT BEHIND OPEN DOOR SWINGS.
 5. CIRCUIT ASSIGNMENTS ARE FOR REFERENCE ONLY. CONTRACTOR SHALL FIELD VERIFY CIRCUIT AVAILABILITY AND NOTIFY ENGINEER OF ANY DEVIATIONS.

- ### LIGHTING PLAN CODED NOTES:
1. CONNECT NEW LIGHTING FIXTURES COMPLETE TO EXISTING NORMAL POWER CORRIDOR LIGHTING CIRCUIT AND EXISTING SWITCHING.
 2. CONNECT NEW LIGHTING FIXTURES COMPLETE TO EXISTING LIFE SAFETY POWER CORRIDOR LIGHTING CIRCUIT.
 3. ALL NEW FIRE ALARM DEVICES IN THE PROJECT AREA SHALL BE CONNECTED TO NEW FATO IN THIS ROOM. REFER TO FIRE ALARM RISER DIAGRAM AND NOTES FOR ADDITIONAL INFORMATION AND WORK REQUIREMENTS.
 4. COORDINATE WORK IN CORRIDORS #1C-403 AND #1C-404 WITH CONSTRUCTION SCHEDULE AS DEFINED ON ARCHITECTURAL PLANS. TEMPORARILY CONNECT ELECTRICAL CIRCUITS IN THIS CORRIDOR TO PANELBOARDS IN ELECTRICAL ROOM #1B-178 UNTIL COMPLETION OF NEW ELECTRICAL CLOSET #1B-570E.
 5. APPROXIMATE LOCATION OF RECEPTION AND WAITING AREA LIGHTING SWITCH CONTROLS. GANG ON/OFF SWITCHES TOGETHER AND DIMMER SWITCHES TOGETHER. REFER TO ENLARGED SWITCH LOCATION PLAN ON THIS SHEET AND "WAITING/RECEPTION AREA WALL SWITCH DETAIL" ON SHEET E-12 FOR ADDITIONAL INFORMATION.
 6. RELOCATE EXISTING LIGHTING FIXTURES TO ACCOMMODATE WORK TO EXISTING CEILING AND RECONNECT COMPLETE TO EXISTING LIGHTING CIRCUIT ONCE CEILING WORK HAS COMPLETED.
 7. REVISE EXISTING EXIT SIGN TO INDICATE PATH OF EGRESS IN TWO DIRECTIONS. REPLACE EXIT SIGN WITH NEW AND RECONNECT TO EXISTING CIRCUIT IF REVISION IS NOT POSSIBLE.
 8. PROVIDE (1) GENERATOR TRANSFER DEVICE (GTD) TO CONTROL OPERATION OF LIFE SAFETY LIGHTING FIXTURES. INSTALL GTD ABOVE FINISHED CEILING. CONNECT NORMAL AND EMERGENCY "LIFE SAFETY" LIGHTING CIRCUITS TO FIXTURES AND GTD. PROVIDE AN ADDITIONAL NORMAL POWER "UNSWITCHED HOT" CONDUCTOR TO GTD SO THAT WHEN GTD SENSES LOSS OF NORMAL POWER, IT WILL SWITCH TO THE EMERGENCY POWER SOURCE TO SUPPLY ALL LIFE SAFETY LIGHTING FIXTURES. CONNECT FIXTURES SUCH THAT SWITCHING IS OPERATIONAL FOR ALL FIXTURES WHEN UNDER NORMAL POWER OPERATION. REFER TO "WAITING ROOM 1B-560 DOWNLIGHT FIXTURE WIRING DIAGRAM" ON DRAWING "1-E2" FOR ADDITIONAL INFORMATION AND WORK REQUIREMENTS.



PARTIAL FIRST FLOOR RECEPTION & WAITING RM. SWITCH LOCATION PLAN
SCALE: 1/2" = 1'-0"
2



PARTIAL FIRST FLOOR FIRE ALARM TERMINAL CABINET LOCATION PLAN
SCALE: 1/4" = 1'-0"
3

FULLY SPRINKLERED

																																																																																																																																																																																																																																																																																																																																																																																																																																																																																																																																																																																																																																																																																																																																																																																																																																																																																																																																																																																																																																																																																																																																																																																																																																																																																																																																																																																																																					</
--	--	--	--	--	--	--	--	--	--	--	--	--	--	--	--	--	--	--	--	--	--	--	--	--	--	--	--	--	--	--	--	--	--	--	--	--	--	--	--	--	--	--	--	--	--	--	--	--	--	--	--	--	--	--	--	--	--	--	--	--	--	--	--	--	--	--	--	--	--	--	--	--	--	--	--	--	--	--	--	--	--	--	--	--	--	--	--	--	--	--	--	--	--	--	--	--	--	--	--	--	--	--	--	--	--	--	--	--	--	--	--	--	--	--	--	--	--	--	--	--	--	--	--	--	--	--	--	--	--	--	--	--	--	--	--	--	--	--	--	--	--	--	--	--	--	--	--	--	--	--	--	--	--	--	--	--	--	--	--	--	--	--	--	--	--	--	--	--	--	--	--	--	--	--	--	--	--	--	--	--	--	--	--	--	--	--	--	--	--	--	--	--	--	--	--	--	--	--	--	--	--	--	--	--	--	--	--	--	--	--	--	--	--	--	--	--	--	--	--	--	--	--	--	--	--	--	--	--	--	--	--	--	--	--	--	--	--	--	--	--	--	--	--	--	--	--	--	--	--	--	--	--	--	--	--	--	--	--	--	--	--	--	--	--	--	--	--	--	--	--	--	--	--	--	--	--	--	--	--	--	--	--	--	--	--	--	--	--	--	--	--	--	--	--	--	--	--	--	--	--	--	--	--	--	--	--	--	--	--	--	--	--	--	--	--	--	--	--	--	--	--	--	--	--	--	--	--	--	--	--	--	--	--	--	--	--	--	--	--	--	--	--	--	--	--	--	--	--	--	--	--	--	--	--	--	--	--	--	--	--	--	--	--	--	--	--	--	--	--	--	--	--	--	--	--	--	--	--	--	--	--	--	--	--	--	--	--	--	--	--	--	--	--	--	--	--	--	--	--	--	--	--	--	--	--	--	--	--	--	--	--	--	--	--	--	--	--	--	--	--	--	--	--	--	--	--	--	--	--	--	--	--	--	--	--	--	--	--	--	--	--	--	--	--	--	--	--	--	--	--	--	--	--	--	--	--	--	--	--	--	--	--	--	--	--	--	--	--	--	--	--	--	--	--	--	--	--	--	--	--	--	--	--	--	--	--	--	--	--	--	--	--	--	--	--	--	--	--	--	--	--	--	--	--	--	--	--	--	--	--	--	--	--	--	--	--	--	--	--	--	--	--	--	--	--	--	--	--	--	--	--	--	--	--	--	--	--	--	--	--	--	--	--	--	--	--	--	--	--	--	--	--	--	--	--	--	--	--	--	--	--	--	--	--	--	--	--	--	--	--	--	--	--	--	--	--	--	--	--	--	--	--	--	--	--	--	--	--	--	--	--	--	--	--	--	--	--	--	--	--	--	--	--	--	--	--	--	--	--	--	--	--	--	--	--	--	--	--	--	--	--	--	--	--	--	--	--	--	--	--	--	--	--	--	--	--	--	--	--	--	--	--	--	--	--	--	--	--	--	--	--	--	--	--	--	--	--	--	--	--	--	--	--	--	--	--	--	--	--	--	--	--	--	--	--	--	--	--	--	--	--	--	--	--	--	--	--	--	--	--	--	--	--	--	--	--	--	--	--	--	--	--	--	--	--	--	--	--	--	--	--	--	--	--	--	--	--	--	--	--	--	--	--	--	--	--	--	--	--	--	--	--	--	--	--	--	--	--	--	--	--	--	--	--	--	--	--	--	--	--	--	--	--	--	--	--	--	--	--	--	--	--	--	--	--	--	--	--	--	--	--	--	--	--	--	--	--	--	--	--	--	--	--	--	--	--	--	--	--	--	--	--	--	--	--	--	--	--	--	--	--	--	--	--	--	--	--	--	--	--	--	--	--	--	--	--	--	--	--	--	--	--	--	--	--	--	--	--	--	--	--	--	--	--	--	--	--	--	--	--	--	--	--	--	--	--	--	--	--	--	--	--	--	--	--	--	--	--	--	--	--	--	--	--	--	--	--	--	--	--	--	--	--	--	--	--	--	--	--	--	--	--	--	--	--	--	--	--	--	--	--	--	--	--	--	--	--	--	--	--	--	--	--	--	--	--	--	--	--	--	--	--	--	--	--	--	--	--	--	--	--	--	--	--	--	--	--	--	--	--	--	--	--	--	--	--	--	--	--	--	--	--	--	--	--	--	--	--	--	--	--	--	--	--	--	--	--	--	--	--	--	--	--	--	--	--	--	--	--	--	--	--	--	--	--	--	--	--	--	--	--	--	--	--	--	--	--	--	--	--	--	--	--	--	--	--	--	--	--	--	--	--	--	--	--	--	--	--	--	--	--	--	--	--	--	--	--	--	--	--	--	--	--	--	--	--	--	--	--	--	--	--	--	--	--	--	--	--	--	--	--	--	--	--	--	--	--	--	--	--	--	--	--	--	--	--	--	--	--	--	--	--	--	--	--	--	--	--	--	--	--	--	--	--	--	--	--	--	--	--	--	--	--	--	--	--	--	--	--	--	--	--	--	--	--	--	--	--	--	--	--	--	--	--	--	--	--	--	--	--	--	--	--	--	--	--	--	--	--	--	--	--	--	--	--	--	--	--	--	--	--	--	--	--	--	--	--	--	--	--	--	--	--	--	--	--	--	--	--	--	--	--	--	--	--	--	--	--	--	--	--	--	--	--	--	--	--	--	--	--	--	--	--	--	--	--	--	--	--	--	--	--	--	--	--	--	--	--	--	--	--	--	--	--	--	--	--	--	--	--	--	--	--	--	--	--	--	--	--	--	--	--	--	--	--	--	--	--	--	--	--	--	--	--	--	--	--	--	--	--	--	--	--	--	--	--	--	--	--	--	--	--	--	--	--	--	--	--	--	--	--	--	--	--	--	--	--	--	--	--	--	--	--	--	--	--	--	--	--	--	--	--	--	--	--	--	--	--	--	--	--	--	--	--	--	--	--	--	--	--	--	--	--	--	--	--	--	--	--	--	--	--	--	--	--	--	--	--	--	--	--	--	--	--	--	--	--	--	--	--	--	--	--	--	--	--	--	--	--	--	--	--	--	--	--	--	--	--	--	--	--	--	--	--	--	--	--	--	--	--	--	--	--	--	--	--	--	--	--	--	--	--	--	--	----